

Transmission of material in this release is embargoed until
8:30 a.m. (EST) Thursday, December 10, 2015

USDL-15-2331

Technical information: (202) 691-7101 • MXPinfo@bls.gov • www.bls.gov/mxp
Media contact: (202) 691-5902 • PressOffice@bls.gov

U.S. IMPORT AND EXPORT PRICE INDEXES – NOVEMBER 2015

Prices for U.S. imports fell 0.4 percent in November following a 0.3-percent decline in October, the U.S. Bureau of Labor Statistics reported today. A decrease in import fuel prices drove the November decline in the price index for overall imports. U.S. export prices declined 0.6 percent in November, after a 0.2-percent decrease the previous month.

Chart 1. One-month percent change in the Import Price Index: November 2014 – November 2015

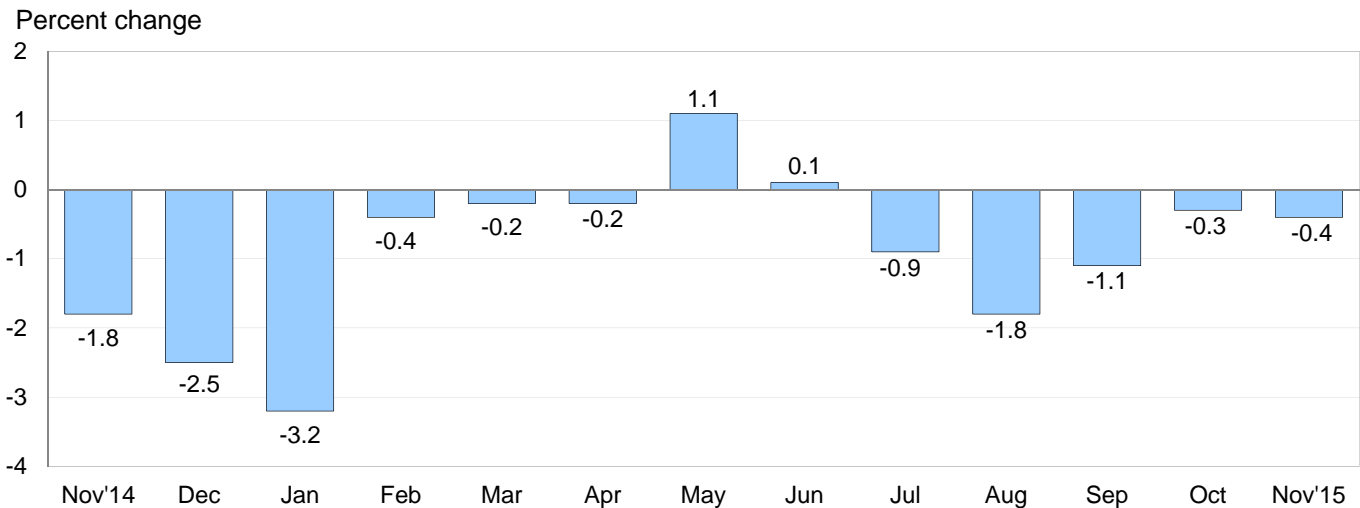
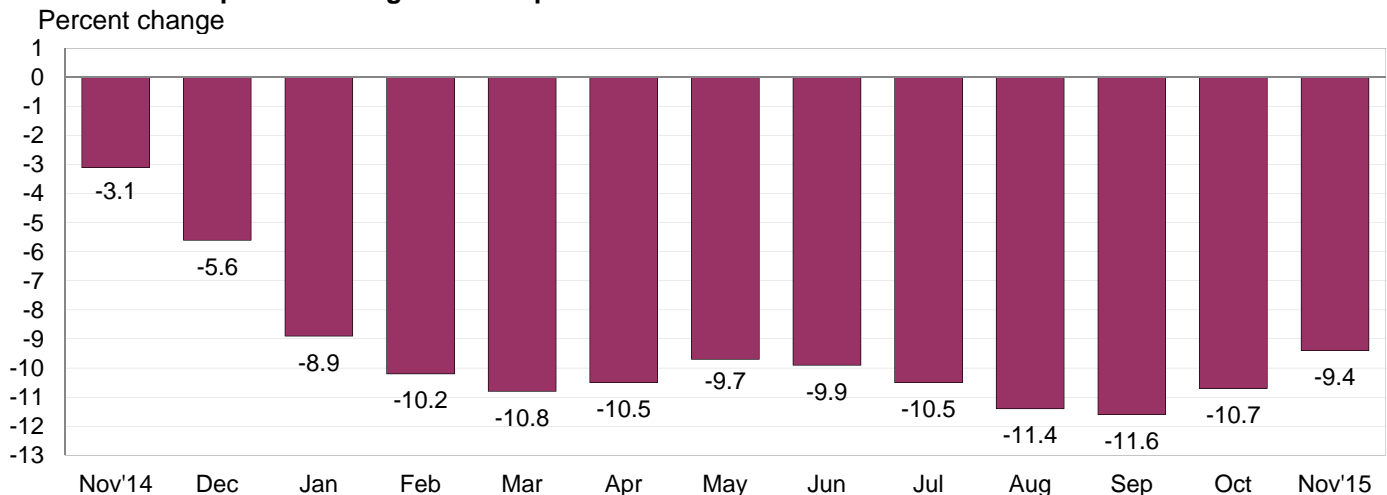


Chart 2. 12-month percent change in the Import Price Index: November 2014 – November 2015



All Imports: Overall import prices decreased 0.4 percent in November, after falling 0.3 percent in October and 1.1 percent in September. Import prices have trended down throughout 2015, declining each month with the exception of May and June. Prices for imports fell 9.4 percent for the year ended in November, and have not increased on a 12-month basis since the index rose 0.9 percent in July 2014.

Fuel Imports: Fuel prices resumed a downward trend in November, declining 2.5 percent following a 0.1-percent uptick the previous month. The price index for import fuel decreased 24.9 percent between June and September. A 2.5-percent drop in petroleum prices and a 4.6-percent decline in natural gas prices both contributed to the November decline in overall import fuel prices. Prices for overall fuel fell 43.2 percent over the past 12 months, after decreasing 15.9 percent between November 2013 and November 2014. Petroleum prices declined 44.5 percent over the past year, while prices for natural gas fell 32.3 percent.

All Imports Excluding Fuel: The price index for nonfuel imports also decreased in November, falling 0.2 percent following 0.3-percent declines in each of the previous 4 months. Lower prices for nonfuel industrial supplies and materials; foods, feeds, and beverages; capital goods; and automotive vehicles all factored into the November decline in nonfuel import prices. Prices for nonfuel imports decreased 3.2 percent for the year ended in November. Prices for nonfuel industrial supplies and materials; foods, feeds, and beverages; and each of the major finished goods categories all fell over the past 12 months.

Table A. Percent change in Import and Export Price Indexes, selected categories

Month	IMPORTS			EXPORTS		
	All imports	Fuel imports	Nonfuel imports	All exports	Agricultural exports	Non-agricultural exports
2014						
November.....	-1.8	-9.3	-0.3	-0.9	0.1	-1.0
December.....	-2.5	-15.0	-0.1	-0.9	-0.7	-1.0
2015						
January.....	-3.2	-20.1	-0.7	-1.7	-1.4	-1.8
February.....	-0.4	-1.9	-0.2	-0.2	-2.2	0.2
March.....	-0.2	1.5	-0.4	0.0	-1.6	0.2
April.....	-0.2	1.8	-0.3	-0.6	-0.9	-0.7
May.....	1.1	10.8	0.0	0.5	-1.3	0.6
June.....	0.1	1.5	-0.2	-0.3	-1.6	-0.1
July.....	-0.9	-6.1	-0.3	-0.4	1.0	-0.6
August.....	-1.8	-12.7	-0.3	-1.4	-2.5	-1.3
September.....	-1.1 ^r	-8.4 ^r	-0.3 ^r	-0.6	-1.4 ^r	-0.5
October.....	-0.3 ^r	0.1 ^r	-0.3	-0.2	0.1 ^r	-0.3
November.....	-0.4	-2.5	-0.2	-0.6	-1.1	-0.6
Nov. 2013 to 2014.....	-3.1	-15.9	0.0	-1.7	-4.2	-1.4
Nov. 2014 to 2015.....	-9.4	-43.2	-3.2	-6.3	-12.8	-5.7

r Revised

Chart 3. One-month percent change in the Export Price Index: November 2014 – November 2015

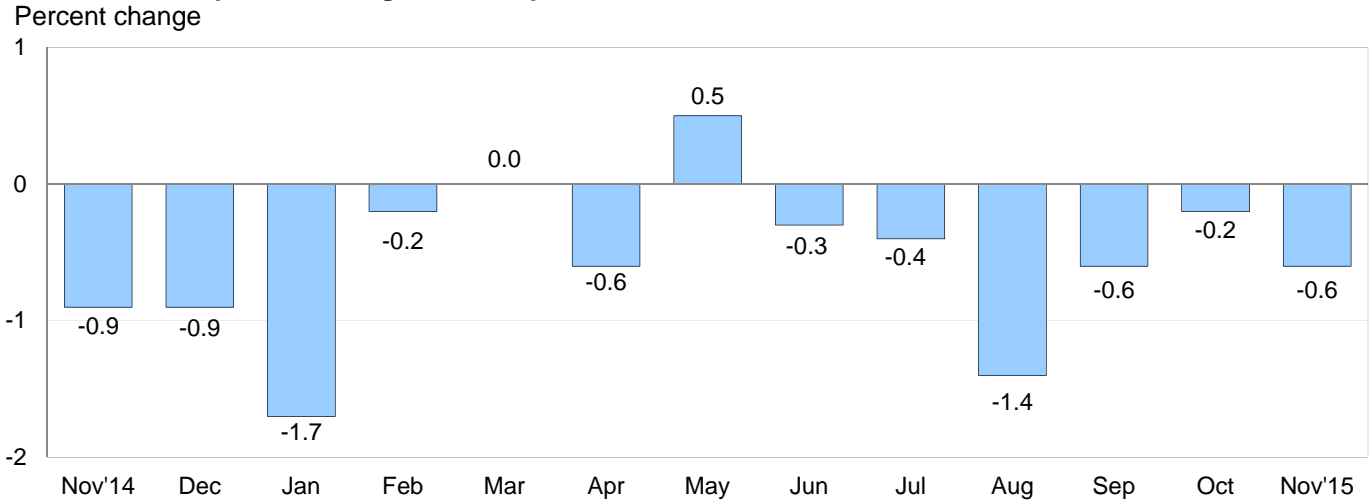
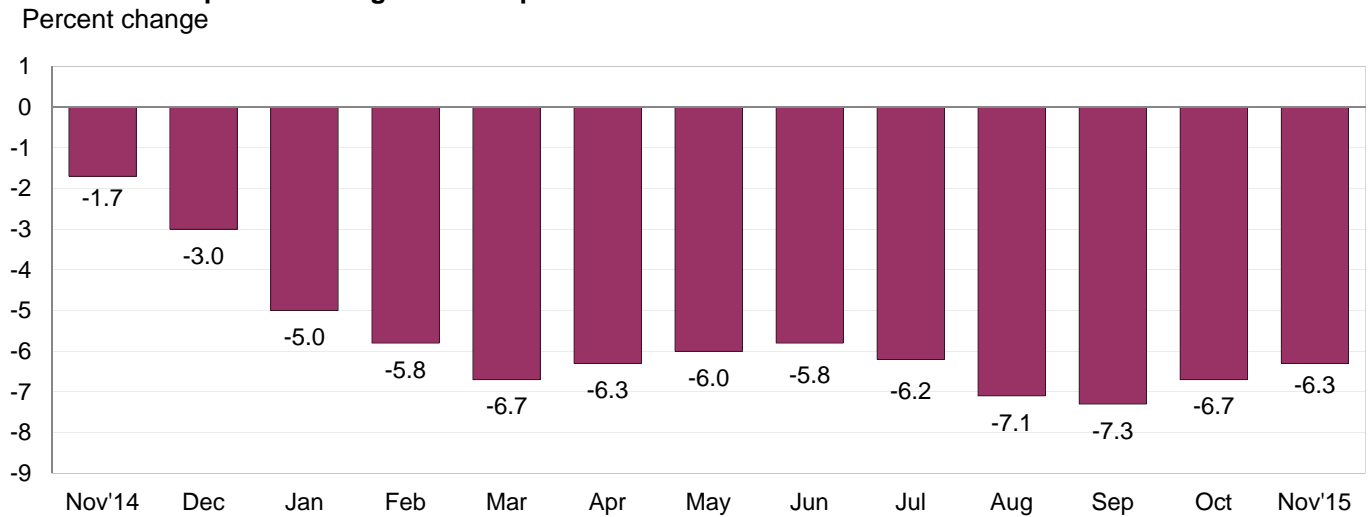


Chart 4. 12-month percent change in the Export Price Index: November 2014 – November 2015



All Exports: Prices for U.S exports declined 0.6 percent in November, following a 0.2-percent decline in October and a 0.6-percent decrease in September. Lower prices for both agricultural and nonagricultural exports contributed to the November decline in overall export prices. The price index for overall exports only recorded 1 monthly advance over the past year and declined 6.3 percent between November 2014 and November 2015.

Agricultural Exports: Agricultural prices decreased 1.1 percent in November, after rising 0.1 percent the previous month. In November, the decline was led by a 6.6-percent drop in nut prices and a 2.4-percent decrease in soybean prices which more than offset a 4.0-percent advance in fruit prices. Prices for agricultural exports fell 12.8 percent over the past year. A 24.5-percent decrease in meat prices was the primary factor for the 12-month drop in overall agricultural prices.

All Exports Excluding Agriculture: The price index for nonagricultural exports decreased 0.6 percent in November, following a 0.3-percent drop in October. In November, falling prices for nonagricultural industrial supplies and materials, capital goods, and automotive vehicles more than offset higher consumer goods prices. Nonagricultural prices fell 5.7 percent over the past year.

SELECTED NOVEMBER HIGHLIGHTS

Import Prices

Imports by Locality of Origin: Prices for imports from China declined 0.3 percent in November, matching a 0.3-percent decrease in May. Those were the largest monthly drops since the index fell 0.6 percent in May 2013. Import prices from China decreased 1.5 percent over the past 12 months, the largest year-over-year drop since the index declined 1.7 percent for the year ended in January 2010. The price indexes for imports from Canada, the European Union, and Mexico all fell in November declining 0.5 percent, 0.4 percent, and 0.3 percent, respectively. All were led by lower fuel prices. Prices for imports from Japan recorded no change for the second consecutive month in November.

Nonfuel Industrial Supplies and Materials: Nonfuel industrial supplies and materials prices fell 0.9 percent in November, after declining 1.0 percent in October. Both declines were driven by lower prices for unfinished metals and chemicals. Prices for nonfuel industrial supplies and materials fell 10.5 percent over the past year, the largest 12-month decrease since the index fell 11.3 percent between October 2008 and October 2009.

Finished Goods: The price indexes for capital goods and automotive vehicles each edged down 0.1 percent in November, following declines of 0.2 percent and 0.3 percent, respectively, the previous month. Capital goods prices fell 2.3 percent on a 12-month basis for the second consecutive month, the largest year-over-year declines since the index fell 2.4 percent in December 2002.

Foods, Feeds, and Beverages: Prices for foods, feeds, and beverages declined 0.5 percent in November, after falling 1.1 percent in October. Both decreases were driven by lower vegetable prices.

Transportation Services: Import air passenger fares increased 3.7 percent in November, following a 5.2-percent rise the previous month. The November advance was led by a 5.1-percent increase in European fares which more than offset a 0.7-percent drop in Asian fares. Overall import air passenger fares fell 2.2 percent over the past 12 months despite the recent increases. Import air freight prices rose 0.8 percent in November and fell 1.5 percent over the past year.

Export Prices

Nonagricultural Industrial Supplies and Materials: Nonagricultural industrial supplies and materials prices decreased 1.6 percent in November, following a 0.7-percent drop the previous month. Falling prices for fuel, metals, and chemicals drove the November decline.

Finished Goods: Finished goods prices were mixed in November. Capital goods prices edged down 0.1 percent for the fourth consecutive month in November and have not recorded a monthly advance since the index rose 0.2 percent in February. Prices for automotive vehicles fell 0.2 percent. The last time the index fell more than 0.2 percent was a 0.3-percent drop in August 2012. In contrast, consumer goods prices ticked up 0.1 percent in November.

Transportation Services: Export air passenger fares declined 0.8 percent in November, following a 1.4-percent decrease in October and an 11.5-percent drop in September. The November decline was driven by a 1.0-percent decrease in Asian fares. Export air passenger fares fell 11.9 percent for the year ended in November. Export air freight prices rose 0.4 percent in November and decreased 1.1 percent over the past 12 months.

Import and Export Price Index data for December 2015 are scheduled for release on Thursday, January 14, 2016 at 8:30 a.m. (EST).

Table 1. U.S. import price indexes and percent changes for selected categories of goods: November 2014 to November 2015

[2000=100, unless otherwise noted]

Description	End Use	Relative importance Oct. 2015 ¹	Index		Percent change				
			Oct. 2015	Nov. 2015	Annual Nov. 2014 to Nov. 2015	Monthly			
						July 2015 to Aug. 2015	Aug. 2015 to Sept. 2015	Sept. 2015 to Oct. 2015	Oct. 2015 to Nov. 2015
All commodities		100.000	121.5	121.0	-9.4	-1.8	-1.1	-0.3	-0.4
All imports excluding food and fuels (Dec. 2010=100)		84.450	98.8	98.6	-3.1	-0.4	-0.2	-0.3	-0.2
All imports excluding petroleum		91.227	111.5	111.2	-3.4	-0.4	-0.2	-0.4	-0.3
All imports excluding fuels (Dec. 2001=100)		90.468	115.5	115.3	-3.2	-0.3	-0.3	-0.3	-0.2
Foods, feeds, & beverages	0	6.018	172.7	171.9	-5.0	0.3	-0.7	-1.1	-0.5
Agricultural foods, feeds & beverages, excluding distilled beverages.....	00	4.668	190.6	189.7	-4.7	-0.1	-0.7	-1.5	-0.5
Nonagricultural foods (fish, distilled beverages).....	01	1.350	132.3	131.4	-6.1	1.8	-0.8	0.4	-0.7
Industrial supplies & materials	1	22.773	159.3	156.9	-28.0	-6.9	-4.2	-0.6	-1.5
Industrial supplies & materials excluding petroleum.....		13.999	141.7	140.3	-11.2	-1.8	-0.8	-1.0	-1.0
Industrial supplies & materials excluding fuels (Dec. 2001=100).....		13.240	160.4	159.0	-10.5	-1.9	-1.0	-1.0	-0.9
Industrial supplies & materials, durable....		7.784	147.5	145.9	-11.2	-2.3	-0.8	-0.5	-1.1
Industrial supplies & materials nondurable excluding petroleum.....		5.456	134.2	133.0	-11.2	-1.1	-0.7	-1.8	-0.9
Fuels & lubricants.....	10	9.534	157.7	153.8	-43.2	-12.7	-8.4	0.1	-2.5
Petroleum & petroleum products.....	100	8.775	169.3	165.1	-44.5	-13.5	-9.4	0.4	-2.5
Crude.....	10000	6.329	171.4	165.2	-46.1	-15.0	-9.8	2.3	-3.6
Fuels, n.e.s.-coals & gas.....	101	0.569	97.6	94.4	-25.8	0.2	4.8	-2.7	-3.3
Gas-natural.....	10110	0.407	81.2	77.5	-32.3	0.4	6.7	-3.7	-4.6
Paper & paper base stocks.....	11	0.603	109.2	109.4	-3.0	0.1	0.0	-0.6	0.2
Materials associated with nondurable supplies & materials.....	12	4.923	153.4	152.3	-10.1	-1.3	-1.4	-1.9	-0.7
Selected building materials.....	13	1.202	132.9	134.6	-4.3	-1.5	-1.7	-0.2	1.3
Unfinished metals related to durable goods.....	14	3.099	188.7	183.6	-19.8	-4.4	-0.9	-0.6	-2.7
Finished metals related to durable goods.....	15	1.698	147.8	146.9	-6.4	-1.0	-0.7	-0.8	-0.6
Nonmetals related to durable goods.....	16	1.715	109.0	108.7	-2.8	-0.5	0.0	-0.1	-0.3
Capital goods	2	28.116	90.2	90.1	-2.3	-0.1	-0.1	-0.2	-0.1
Electric generating equipment.....	20	3.425	117.2	117.1	-2.6	-0.2	0.1	-0.4	-0.1
Nonelectrical machinery.....	21	22.190	82.7	82.6	-2.5	-0.1	-0.1	-0.2	-0.1
Transportation equipment excluding motor vehicles (Dec. 2001=100).....	22	2.501	136.9	137.0	0.2	0.0	-0.1	0.0	0.1
Automotive vehicles, parts & engines	3	15.695	110.7	110.6	-1.8	-0.1	-0.1	-0.3	-0.1
Consumer goods, excluding automotives	4	27.399	107.2	107.2	-0.7	-0.1	0.1	0.0	0.0
Nondurables, manufactured.....	40	13.097	119.2	119.1	0.2	0.0	0.2	0.0	-0.1
Durables, manufactured.....	41	12.796	95.4	95.3	-1.7	-0.2	0.2	-0.1	-0.1
Nonmanufactured consumer goods.....	42	1.505	116.9	117.1	-2.8	-0.2	-0.6	0.2	0.2

¹ Relative importance figures are based on 2013 trade values.

NOTES: Data may be revised in each of the 3 months after original publication.

Dash = Not available

Table 2. U.S. export price indexes and percent changes for selected categories of goods: November 2014 to November 2015

[2000=100, unless otherwise noted]

Description	End Use	Relative importance Oct. 2015 ¹	Index		Percent change				
			Oct. 2015	Nov. 2015	Annual Nov. 2014 to Nov. 2015	Monthly			
						July 2015 to Aug. 2015	Aug. 2015 to Sept. 2015	Sept. 2015 to Oct. 2015	Oct. 2015 to Nov. 2015
All commodities.....		100.000	122.0	121.3	-6.3	-1.4	-0.6	-0.2	-0.6
Agricultural commodities.....		8.766	179.1	177.2	-12.8	-2.5	-1.4	0.1	-1.1
All exports excluding food and fuels (Dec. 2010=100).....		84.808	99.1	98.7	-2.8	-0.6	-0.1	-0.3	-0.4
Nonagricultural commodities.....		91.234	117.7	117.0	-5.7	-1.3	-0.5	-0.3	-0.6
Foods, feeds, & beverages.....	0	8.126	180.5	178.9	-13.0	-2.9	-1.4	0.6	-0.9
Agricultural foods, feeds & beverages, excluding distilled beverages.....	00	7.456	181.1	179.5	-13.7	-2.9	-1.5	0.4	-0.9
Nonagricultural foods (fish, distilled beverages).....	01	0.670	181.3	180.1	-4.3	-3.2	0.0	2.0	-0.7
Industrial supplies & materials.....	1	29.924	144.6	142.3	-15.0	-3.6	-1.5	-0.8	-1.6
Industrial supplies & materials, durable....		10.799	152.6	150.5	-8.8	-2.5	-0.1	-0.1	-1.4
Industrial supplies & materials, nondurable.....		19.126	141.0	138.6	-18.2	-4.1	-2.3	-1.1	-1.7
Agricultural industrial supplies & materials.....	10	1.310	172.3	168.8	-6.9	-0.4	-1.0	-1.4	-2.0
Nonagricultural industrial supplies & materials.....		28.614	143.7	141.4	-15.4	-3.7	-1.6	-0.7	-1.6
Fuels & lubricants.....	11	7.066	156.1	152.6	-32.0	-8.4	-5.0	-1.2	-2.2
Nonagricultural supplies & materials excluding fuels & building materials.....	12	20.561	151.3	149.1	-8.4	-2.0	-0.3	-0.6	-1.5
Selected building materials.....	13	0.987	113.2	113.8	-6.5	-1.5	-0.9	0.3	0.5
Capital goods.....	2	38.790	107.2	107.1	-0.2	-0.1	-0.1	-0.1	-0.1
Electrical generating equipment.....	20	3.877	112.9	112.8	-2.3	0.1	-0.7	-0.3	-0.1
Nonelectrical machinery.....	21	26.495	94.7	94.7	-0.6	-0.3	0.1	-0.2	0.0
Transportation equipment excluding motor vehicles (Dec. 2001=100).....	22	8.417	162.1	162.0	2.5	0.2	0.2	-0.1	-0.1
Automotive vehicles, parts & engines.....	3	10.429	113.8	113.6	-0.5	0.0	0.0	0.0	-0.2
Consumer goods, excluding automotives.....	4	12.731	111.9	112.0	-2.1	-0.4	-0.2	-0.1	0.1
Nondurables, manufactured.....	40	5.642	107.7	107.7	-3.1	-0.6	-0.2	0.0	0.0
Durables, manufactured.....	41	5.433	109.9	110.0	-1.0	-0.2	-0.3	-0.2	0.1

¹ Relative importance figures are based on 2013 trade values.

NOTES: Data may be revised in each of the 3 months after original publication.

Dash = Not available

Table 3. U.S. import price indexes and percent changes for selected categories of goods: November 2014 to November 2015

[December 2005=100, unless otherwise noted]

Description	NAICS	Relative importance Oct. 2015 ¹	Index		Percent change				
			Oct. 2015	Nov. 2015	Annual	Monthly			
					Nov. 2014 to Nov. 2015	July 2015 to Aug. 2015	Aug. 2015 to Sept. 2015	Sept. 2015 to Oct. 2015	Oct. 2015 to Nov. 2015
Nonmanufactured articles.....		9.052	87.1	84.6	-39.2	-11.3	-6.6	1.0	-2.9
Agriculture, forestry, fishing and hunting.....	11	2.052	171.4	171.4	-5.5	-0.3	0.3	-2.5	0.0
Crop production.....	111	1.669	183.8	182.8	-4.0	-0.3	0.8	-1.4	-0.5
Animal production (Dec. 2014=100).....	112	0.195	77.5	81.3	—	-2.0	-2.5	-11.0	4.9
Forestry and logging (Dec. 2012=100).....	113	0.108	61.3	60.3	-11.2	2.0	-0.6	-6.8	-1.6
Mining.....	21	7.000	76.9	74.1	-44.8	-13.9	-8.5	2.1	-3.6
Mining (except oil and gas) (Dec. 2006=100).....	212	0.210	97.0	96.8	-18.0	0.0	-0.9	-0.3	-0.2
Manufactured articles.....		90.656	109.7	109.5	-4.7	-0.6	-0.5	-0.5	-0.2
Manufactured goods, part 1.....	31	12.200	123.4	123.1	-2.5	0.1	-0.3	-0.4	-0.2
Food manufacturing.....	311	3.324	149.1	148.3	-7.4	0.5	-1.2	-1.1	-0.5
Beverage and tobacco product manufacturing.....	312	1.124	118.3	118.2	0.7	-0.2	0.2	0.0	-0.1
Textile mills (Dec. 2011=100).....	313	0.413	100.2	99.4	-3.8	-0.1	-0.3	-0.2	-0.8
Textile product mills.....	314	0.904	111.3	110.9	-2.9	-0.1	0.0	-0.4	-0.4
Apparel manufacturing.....	315	4.479	111.6	111.6	-0.4	-0.1	-0.1	-0.1	0.0
Leather and allied product manufacturing.....	316	1.957	124.6	124.6	0.6	0.1	0.1	0.0	0.0
Manufactured goods, part 2.....	32	17.202	116.9	116.8	-11.3	-2.0	-1.8	-1.3	-0.1
Wood product manufacturing.....	321	0.705	109.4	111.4	-6.9	-2.3	-2.6	-0.5	1.8
Paper manufacturing.....	322	1.114	106.7	106.6	-3.9	-0.6	-0.1	-0.4	-0.1
Petroleum and coal products manufacturing.....	324	2.298	78.0	78.7	-39.1	-9.7	-8.9	-5.0	0.9
Chemical manufacturing.....	325	9.638	131.3	130.8	-5.2	-0.6	-0.7	-0.9	-0.4
Plastics and rubber products manufacturing.....	326	2.236	118.6	118.5	-2.9	0.0	0.0	-0.2	-0.1
Nonmetallic mineral product manufacturing.....	327	1.002	130.2	130.2	-0.4	-0.2	-0.4	0.0	0.0
Manufactured goods, part 3.....	33	61.254	104.2	104.0	-3.1	-0.4	-0.2	-0.2	-0.2
Primary metal manufacturing.....	331	3.781	127.6	124.6	-18.3	-3.6	-1.1	-0.5	-2.4
Fabricated metal product manufacturing.....	332	3.073	124.8	124.2	-2.7	-0.2	0.1	-0.7	-0.5
Machinery manufacturing.....	333	7.392	118.5	118.5	-1.6	-0.1	0.1	-0.1	0.0
Computer and electronic product manufacturing.....	334	18.092	77.6	77.5	-2.4	-0.1	-0.3	0.0	-0.1
Electrical equipment, appliance, and component manufacturing.....	335	4.813	117.1	116.9	-2.1	-0.2	0.3	-0.1	-0.2
Transportation equipment manufacturing.....	336	16.885	109.8	109.8	-1.4	-0.2	0.0	-0.3	0.0
Furniture and related product manufacturing.....	337	1.619	115.5	115.5	-0.9	-0.2	-0.2	-0.1	0.0
Miscellaneous manufacturing.....	339	5.600	119.1	119.2	-2.0	-0.4	-0.2	-0.1	0.1

¹ Relative importance figures are based on 2013 trade values.

NOTES: Data may be revised in each of the 3 months after original publication.

Dash = Not available

Table 4. U.S. export price indexes and percent changes for selected categories of goods: November 2014 to November 2015

[December 2005=100, unless otherwise noted]

Description	NAICS	Relative importance Oct. 2015 ¹	Index		Percent change				
			Oct. 2015	Nov. 2015	Annual Nov. 2014 to Nov. 2015	Monthly			
						July 2015 to Aug. 2015	Aug. 2015 to Sept. 2015	Sept. 2015 to Oct. 2015	Oct. 2015 to Nov. 2015
Nonmanufactured articles.....		6.165	124.9	120.8	-17.3	-3.9	-2.7	-1.1	-3.3
Agriculture, forestry, fishing and hunting.....	11	4.173	158.6	156.0	-9.0	-5.1	-2.5	1.7	-1.6
Crop production.....	111	3.934	164.6	161.9	-9.0	-5.2	-2.6	1.8	-1.6
Mining.....	21	1.992	65.7	61.2	-31.2	-1.5	-3.0	-6.7	-6.8
Mining (except oil and gas).....	212	1.117	80.4	79.6	-17.0	-3.1	-2.3	-2.0	-1.0
Manufactured articles.....		92.421	112.5	112.1	-5.2	-1.1	-0.4	-0.3	-0.4
Manufactured goods, part 1.....	31	6.851	134.8	133.8	-12.8	-0.4	-0.4	-1.2	-0.7
Food manufacturing.....	311	4.657	151.3	150.0	-15.9	-0.5	-0.5	-1.3	-0.9
Beverage and tobacco product manufacturing.....	312	0.574	106.6	106.9	-4.5	-0.5	-1.4	-2.0	0.3
Manufactured goods, part 2.....	32	23.814	109.2	108.2	-13.5	-3.1	-1.5	-0.5	-0.9
Paper manufacturing.....	322	1.916	123.7	122.7	-2.5	-1.9	1.6	-0.2	-0.8
Petroleum and coal products manufacturing.....	324	4.760	90.9	89.2	-35.3	-10.4	-5.5	-1.2	-1.9
Chemical manufacturing.....	325	13.239	117.4	116.4	-7.7	-1.2	-0.8	-0.6	-0.9
Plastics and rubber products manufacturing.....	326	2.256	116.4	116.5	-1.9	-0.5	-0.1	-0.5	0.1
Nonmetallic mineral product manufacturing.....	327	0.839	112.3	112.4	0.4	0.0	-0.1	0.1	0.1
Manufactured goods, part 3.....	33	61.756	111.7	111.4	-0.8	-0.4	0.1	-0.1	-0.3
Primary metal manufacturing.....	331	4.675	134.0	131.5	-7.0	-4.0	1.2	0.2	-1.9
Fabricated metal product manufacturing...	332	3.083	129.6	130.2	1.8	0.5	0.0	-0.2	0.5
Machinery manufacturing.....	333	11.775	125.3	125.5	1.0	0.0	0.1	-0.1	0.2
Computer and electronic product manufacturing.....	334	14.457	85.2	84.9	-2.2	-0.4	-0.1	-0.1	-0.4
Electrical equipment, appliance, and component manufacturing.....	335	3.785	113.3	113.0	-1.6	-0.1	-0.5	0.0	-0.3
Transportation equipment manufacturing..	336	17.922	121.8	121.7	0.9	0.1	0.1	0.0	-0.1
Furniture and related product manufacturing (Dec. 2011=100).....	337	0.392	110.1	110.1	0.8	0.1	0.5	0.1	0.0
Miscellaneous manufacturing.....	339	5.666	122.3	122.4	-2.2	-0.3	-0.2	-0.3	0.1

¹ Relative importance figures are based on 2013 trade values.

NOTES: Data may be revised in each of the 3 months after original publication.

Dash = Not available

Table 5. U.S. import price indexes and percent changes for selected categories of goods: November 2014 to November 2015

[2000=100, unless otherwise noted]

Description	Harmonized system	Relative importance Oct. 2015 ¹	Index		Percent change				
			Oct. 2015	Nov. 2015	Annual	Monthly			
					Nov. 2014 to Nov. 2015	July 2015 to Aug. 2015	Aug. 2015 to Sept. 2015	Sept. 2015 to Oct. 2015	Oct. 2015 to Nov. 2015
Live animals; animal products.....	I	1.323	178.1	177.8	-11.7	1.4	-1.6	-3.0	-0.2
Meat and edible meat ofal.....	02	0.306	221.2	218.9	-16.8	0.9	-1.0	-6.7	-1.0
Fish and crustaceans, molluscs and other aquatic invertebrates.....	03	0.703	129.1	127.2	-8.8	3.2	-1.8	0.7	-1.5
Vegetable products.....	II	2.010	200.7	198.6	-2.7	-1.0	2.0	-1.2	-1.0
Edible vegetables, roots, and tubers.....	07	0.609	498.6	479.1	16.0	1.4	11.1	-5.9	-3.9
Edible fruit and nuts; peel of citrus fruit or melons.....	08	0.492	94.7	95.3	-4.3	-2.9	-2.8	3.4	0.6
Coffee, tea, mate and spices.....	09	0.363	228.6	226.8	-11.7	0.2	-1.5	-0.6	-0.8
Animal or vegetable fats and oils (Dec. 2009=100).....	III	0.272	103.0	102.4	-8.7	1.9	-3.0	-0.1	-0.6
Prepared foodstuffs, beverages, and tobacco.....	IV	2.863	159.8	160.0	-1.2	-0.3	-0.4	-0.4	0.1
Sugars and sugar confectionary (Dec. 2012=100).....	17	0.180	85.0	85.3	-5.3	-5.5	0.1	-0.8	0.4
Cocoa and cocoa preparations (Dec. 2009=100).....	18	0.265	114.0	115.9	4.5	-0.2	2.6	-1.7	1.7
Preparations of cereals, flour, starch or milk; bakers' wares (Dec. 2007=100).....	19	0.288	132.2	132.0	-1.2	-0.1	-0.1	0.0	-0.2
Preparations of vegetables, fruit, nuts, or other parts of plants.....	20	0.332	152.8	155.7	-6.4	0.3	-2.1	-0.2	1.9
Beverages, spirits, and vinegar.....	22	1.089	128.2	128.2	0.2	-0.2	0.2	0.0	0.0
Mineral products.....	V	9.447	158.4	154.4	-43.3	-12.7	-8.4	0.0	-2.5
Mineral fuels, oils and residuals, bituminous substances and mineral waxes.....	27	9.208	155.5	151.4	-43.8	-12.9	-8.6	0.1	-2.6
Products of the chemical or allied industries.....	VI	8.860	146.4	146.0	-4.4	-0.4	-0.6	-0.6	-0.3
Inorganic chemicals.....	28	0.661	287.4	283.6	-16.7	-0.1	-1.0	-1.4	-1.3
Organic chemicals.....	29	2.483	120.8	120.2	-10.0	-1.0	-2.4	-0.9	-0.5
Pharmaceutical products.....	30	3.654	138.3	138.3	3.1	0.4	0.4	0.3	0.0
Fertilizers (Dec. 2009=100).....	31	0.327	91.6	92.4	-19.7	-7.1	-1.6	-8.9	0.9
Tanning extracts; dye, pigments, varnish, paints & putty (Dec. 2011=100).....	32	0.209	97.9	97.9	-7.5	0.0	0.8	-1.5	0.0
Miscellaneous chemical products.....	38	0.570	90.4	90.4	-2.0	0.3	0.0	0.2	0.0
Plastics and articles thereof; rubber and articles thereof.....	VII	3.432	138.7	138.3	-5.6	-0.6	-0.4	-0.6	-0.3
Plastics and articles thereof.....	39	2.227	142.5	142.1	-5.6	-0.9	-0.4	-0.3	-0.3
Rubber and articles thereof.....	40	1.205	133.6	133.1	-5.7	0.0	-0.1	-1.0	-0.4
Raw hides, skins, leather, furskins, travel goods, etc.....	VIII	0.738	127.1	127.0	-0.6	-0.1	-0.4	-0.2	-0.1
Articles of leather; travel goods, bags, etc. of various materials.....	42	0.699	130.0	130.0	-0.2	-0.1	-0.2	-0.3	0.0
Wood, wood charcoal, cork, straw, basketware and wickerwork.....	IX	0.734	133.5	135.9	-6.4	-2.1	-2.3	-0.4	1.8
Wood and articles of wood; wood charcoal (Dec. 2014=100).....	44	0.696	91.5	93.2	-	-2.2	-2.4	-0.4	1.9
Woodpulp, recovered paper, and paper products.....	X	1.183	110.9	110.9	-1.9	-0.3	0.0	-0.3	0.0
Paper and paperboard; articles of paper pulp, paper or paperboard.....	48	0.789	105.2	104.9	-1.8	-0.2	-0.2	0.1	-0.3
Textile and textile articles.....	XI	5.629	114.0	113.9	-1.0	-0.1	-0.1	-0.1	-0.1

See footnotes at end of table.

Table 5. U.S. import price indexes and percent changes for selected categories of goods: November 2014 to November 2015 — Continued
 [2000=100, unless otherwise noted]

Description	Harmoni- zied system	Relative importance Oct. 2015 ¹	Index		Percent change				
			Oct. 2015	Nov. 2015	Annual	Monthly			
					Nov. 2014 to Nov. 2015	July 2015 to Aug. 2015	Aug. 2015 to Sept. 2015	Sept. 2015 to Oct. 2015	Oct. 2015 to Nov. 2015
Articles of apparel and clothing accessories, knitted or crocheted.....	61	2.259	103.9	103.9	-0.1	0.0	-0.1	-0.1	0.0
Articles of apparel and clothing accessories, not knitted or crocheted.....	62	2.023	119.8	119.8	-0.5	0.0	0.0	0.1	0.0
Made-up or worn textile articles.....	63	0.652	105.5	105.1	-2.4	-0.2	0.4	-0.5	-0.4
Headgear, umbrellas, artificial flowers, etc...	XII	1.553	123.6	123.6	0.8	0.1	0.2	0.0	0.0
Footwear and parts of such articles.....	64	1.351	122.8	122.8	0.7	0.2	0.2	0.0	0.0
Stone, plaster, cement, asbestos, ceramics, glass etc.....	XIII	0.927	132.0	132.1	-0.8	-0.2	-0.4	0.1	0.1
Ceramic products.....	69	0.277	138.3	138.0	-2.5	-0.1	-0.1	-0.1	-0.2
Glass and glassware.....	70	0.327	130.0	130.0	0.5	0.1	0.2	0.1	0.0
Pearls, stones, precious metals, imitation jewelry, and coins.....	XIV	3.038	165.2	163.7	-5.0	-2.9	0.7	0.8	-0.9
Base metals and articles of base metals. ...	XV	5.166	158.9	156.6	-13.8	-1.5	-1.3	-1.2	-1.4
Iron and steel.....	72	1.029	166.8	159.9	-27.2	-1.2	-1.6	-3.6	-4.1
Articles of iron or steel.....	73	1.684	144.4	143.6	-7.2	-0.3	-0.6	-1.0	-0.6
Copper and articles thereof.....	74	0.428	259.4	258.7	-18.0	-4.9	-4.8	1.3	-0.3
Aluminum and articles thereof.....	76	0.718	124.0	122.2	-15.1	-2.3	-1.3	-0.9	-1.5
Tools, implements, cutlery, spoons and forks, of base metal; parts thereof.....	82	0.455	127.1	126.2	-2.2	-0.4	-0.3	-0.4	-0.7
Miscellaneous articles of base metal.....	83	0.534	137.4	137.9	-0.1	-0.3	-0.2	-0.2	0.4
Machinery, electrical equipment, TV image and sound recorders, parts, etc.....	XVI	30.411	82.0	81.9	-2.4	-0.1	0.0	-0.2	-0.1
Machinery and mechanical appliances; parts thereof.....	84	15.449	87.1	87.0	-2.5	-0.2	0.2	-0.3	-0.1
Electrical machinery and equip, sound and TV recorders & reproducers, parts.....	85	14.962	77.2	77.1	-2.4	0.0	-0.3	0.0	-0.1
Vehicles, aircraft, vessels and associated transport equipment.....	XVII	14.167	114.3	114.3	-1.0	-0.1	0.0	-0.3	0.0
Motor vehicles and their parts.....	87	12.798	112.9	112.9	-1.1	-0.2	0.0	-0.3	0.0
Aircraft, spacecraft, and parts thereof (Dec. 2002=100).....	88	1.273	119.7	119.7	-0.4	0.0	-0.2	0.0	0.0
Optical, photo, measuring, medical & musical instruments; & timepieces.....	XVIII	4.000	103.3	103.3	-0.9	-0.3	0.0	-0.1	0.0
Optical, photographic, measuring and medical instruments.....	90	3.670	100.1	100.2	-0.7	-0.2	0.0	-0.1	0.1
Clocks and watches and parts thereof.....	91	0.266	140.3	141.0	-1.7	-0.5	-0.1	-0.9	0.5
Miscellaneous manufactured articles.....	XX	4.136	112.4	112.4	-1.4	-0.2	-0.1	-0.2	0.0
Furniture & stuffed furnishings; lamps & lighting fittings, nesoi; prefab bldgs.....	94	2.495	117.1	117.1	-1.3	-0.1	-0.1	-0.1	0.0
Toys, games and sports equipment; parts and accessories thereof.....	95	1.375	103.9	103.9	-1.8	-0.3	-0.3	-0.3	0.0
Miscellaneous manufactured articles.....	96	0.265	134.0	134.0	-0.7	-0.1	0.0	-0.1	0.0

¹ Relative importance figures are based on 2013 trade values.

NOTES: Data may be revised in each of the 3 months after original publication.

Dash = Not available

Table 6. U.S. export price indexes and percent changes for selected categories of goods: November 2014 to November 2015

[2000=100, unless otherwise noted]

Description	Harmonized system	Relative importance Oct. 2015 ¹	Index		Percent change				
			Oct. 2015	Nov. 2015	Annual	Monthly			
					Nov. 2014 to Nov. 2015	July 2015 to Aug. 2015	Aug. 2015 to Sept. 2015	Sept. 2015 to Oct. 2015	Oct. 2015 to Nov. 2015
Live animals; animal products.....	I	1.789	183.9	182.6	-24.8	-1.5	0.6	-2.0	-0.7
Meat & edible meat offal (Dec. 2006=100)...	02	1.041	141.7	140.3	-28.3	-1.6	1.1	-2.8	-1.0
Fish and crustaceans, molluscs and other aquatic invertebrates.....	03	0.397	201.3	199.1	-3.6	-3.7	0.0	1.2	-1.1
Vegetable products.....	II	3.921	201.7	200.2	-10.1	-4.7	-2.6	2.0	-0.7
Edible fruit and nuts; peel of citrus fruit or melons.....	08	1.148	174.6	176.0	-2.1	1.0	-1.3	2.4	0.8
Cereals.....	10	1.014	195.9	193.3	-12.3	-12.7	-1.3	7.9	-1.3
Oilseeds and misc. grains, seeds, fruits, plants, straw and fodder.....	12	1.334	193.8	188.1	-17.6	-4.1	-7.2	0.1	-2.9
Animal or vegetable fats and oils (Dec. 2009=100).....	III	0.197	91.4	93.0	-10.5	-5.2	-1.7	-0.9	1.8
Prepared foodstuffs, beverages, and tobacco.....	IV	2.928	149.9	149.6	-7.3	0.1	-1.3	-0.7	-0.2
Preparations of vegetables, fruit, nuts or other parts of plants (Dec. 2009=100)....	20	0.412	118.2	118.3	0.7	-0.1	0.1	-0.1	0.1
Beverages, spirits, and vinegar (Dec. 2008=100).....	22	0.521	109.2	109.8	-2.1	1.7	-1.7	0.8	0.5
Residues and waste from the food industries; prepared animal feed.....	23	0.695	203.5	201.3	-13.2	0.2	-3.6	-3.4	-1.1
Mineral products.....	V	6.851	177.1	171.5	-33.7	-8.0	-4.7	-2.2	-3.2
Ores, slag and ash (Dec. 2012=100).....	26	0.421	73.5	72.1	-24.4	-2.7	-2.4	-3.8	-1.9
Mineral fuels, oils and residuals, bituminous substances and mineral waxes.....	27	6.244	170.5	164.9	-35.0	-8.5	-5.0	-2.2	-3.3
Products of the chemical or allied industries.....	VI	10.912	140.2	139.7	-5.3	-1.0	-0.8	-0.3	-0.4
Inorganic chemicals.....	28	0.912	183.5	182.9	6.6	-0.1	-0.3	-0.3	-0.3
Organic chemicals.....	29	2.832	136.9	136.4	-15.1	-1.3	-3.4	-1.0	-0.4
Pharmaceutical products.....	30	2.615	110.1	110.3	-3.0	-0.5	-0.4	-0.3	0.2
Essential oils and resinoids; perfumery cosmetic or toilet preparations.....	33	0.804	135.4	135.5	1.9	-0.1	-0.5	-0.1	0.1
Soap; lubricants; waxes, polishing or scouring products; candles, pastes.....	34	0.485	112.4	112.7	-3.8	-2.2	0.3	-0.5	0.3
Miscellaneous chemical products.....	38	1.940	151.7	151.0	-1.3	-1.8	1.8	0.1	-0.5
Plastics and articles thereof; rubber and articles thereof.....	VII	5.151	139.0	137.2	-8.2	-0.7	-0.2	-1.3	-1.3
Plastics and articles thereof.....	39	4.205	134.8	132.8	-8.4	-0.8	-0.1	-1.4	-1.5
Rubber and articles thereof.....	40	0.946	156.6	155.6	-7.7	-0.3	-0.8	-0.7	-0.6
Raw hides, skins, leather, furskins, travel goods, etc.....	VIII	0.379	123.4	117.2	-25.7	-0.7	0.7	-4.0	-5.0
Raw hides and skins other than furskins and leather (Dec.2014=100).....	41	0.210	71.5	66.6	-	-1.2	1.9	-6.9	-6.9
Wood, wood charcoal, cork, straw, baskets and wickerwork (Dec. 2014=100).....	IX	0.615	94.6	95.6	-	-1.3	-0.9	0.7	1.1
Woodpulp, recovered paper, and paper products.....	X	2.294	123.5	122.6	-2.4	-1.6	0.8	0.1	-0.7
Woodpulp and recovered paper.....	47	0.651	126.5	123.0	-4.7	-4.9	3.3	-0.3	-2.8
Paper and paperboard; articles of paper pulp, paper or paperboard.....	48	1.227	122.4	122.6	-1.7	-0.3	-0.1	0.0	0.2
Printed material (Dec. 2014=100).....	49	0.416	98.9	98.9	-	-0.3	0.0	0.5	0.0
Textile and textile articles.....	XI	1.813	121.3	120.5	-4.1	0.1	-0.6	-0.5	-0.7

See footnotes at end of table.

Table 6. U.S. export price indexes and percent changes for selected categories of goods: November 2014 to November 2015 — Continued
 [2000=100, unless otherwise noted]

Description	Harmoni- zied system	Relative importance Oct. 2015 ¹	Index		Percent change				
			Oct. 2015	Nov. 2015	Annual	Monthly			
					Nov. 2014 to Nov. 2015	July 2015 to Aug. 2015	Aug. 2015 to Sept. 2015	Sept. 2015 to Oct. 2015	Oct. 2015 to Nov. 2015
Cotton, including yarns and woven fabrics thereof.....	52	0.466	118.7	116.6	-6.2	-0.2	-1.3	-0.3	-1.8
Stone, plaster, cement, asbestos, ceramics, glass etc.....	XIII	0.840	122.2	122.3	1.8	0.0	-0.1	0.1	0.1
Glass and glassware.....	70	0.433	98.8	98.8	0.3	0.0	-0.1	0.0	0.0
Pearls, stones, precious metals, imitation jewelry, and coins.....	XIV	4.726	226.8	223.7	-5.1	-3.3	1.3	0.4	-1.4
Base metals and articles of base metals. ...	XV	5.086	145.8	143.8	-10.7	-1.5	-0.8	-0.6	-1.4
Iron and steel.....	72	1.125	147.5	142.2	-22.5	-3.5	-1.4	-1.9	-3.6
Copper and articles thereof.....	74	0.464	167.0	161.4	-21.8	-7.1	-0.8	-0.3	-3.4
Aluminum and articles thereof.....	76	0.825	106.5	103.0	-17.3	-2.0	-2.8	-0.7	-3.3
Miscellaneous articles of base metal.....	83	0.342	148.6	148.6	1.0	0.1	0.1	0.0	0.0
Machinery, electrical equipment, TV image and sound recorders, parts, etc.....	XVI	29.513	96.5	96.4	-0.8	-0.1	-0.2	-0.1	-0.1
Machinery and mechanical appliances; parts thereof.....	84	17.811	113.2	113.2	0.0	-0.1	0.0	0.0	0.0
Electrical machinery and equipment and parts and accessories thereof.....	85	11.702	78.5	78.3	-2.0	-0.3	-0.4	-0.3	-0.3
Vehicles, aircraft, vessels and associated transport equipment.....	XVII	14.952	131.1	131.1	0.8	0.2	0.1	-0.1	0.0
Motor vehicles and their parts.....	87	9.272	115.0	115.0	-0.2	0.1	-0.1	0.0	0.0
Optical, photo, measuring, medical & musical instruments; & timepieces.....	XVIII	6.341	107.2	107.3	-0.3	-0.3	-0.1	-0.1	0.1
Miscellaneous manufactured articles.....	XX	1.527	111.6	110.9	0.2	-0.7	0.4	0.5	-0.6
Furniture; stuffed furnishings; lamps and lighting fittings nesoi;.....	94	0.874	124.6	123.9	1.2	-0.2	0.2	0.6	-0.6
Toys, games and sports equipment; parts and accessories thereof.....	95	0.492	89.8	89.8	0.2	-0.1	0.0	0.3	0.0

¹ Relative importance figures are based on 2013 trade values.

NOTES: Data may be revised in each of the 3 months after original publication.

Dash = Not available

Table 7. U.S. import price indexes and percent changes by locality of origin: November 2014 to November 2015
[2000=100, unless otherwise noted]

Description	Relative importance Oct. 2015 ¹	Index		Percent change				
		Oct. 2015	Nov. 2015	Annual	Monthly			
				Nov. 2014 to Nov. 2015	July 2015 to Aug. 2015	Aug. 2015 to Sept. 2015	Sept. 2015 to Oct. 2015	Oct. 2015 to Nov. 2015
Industrialized Countries²	100.000	117.1	116.6	-9.1	-2.1	-1.4	0.1	-0.4
Nonmanufactured articles.....	7.252	121.4	118.1	-41.6	-16.4	-7.7	5.5	-2.7
Manufactured articles.....	92.362	116.4	116.2	-4.9	-0.8	-0.8	-0.3	-0.2
Other Countries³	100.000	119.7	119.2	-9.4	-1.6	-1.0	-0.3	-0.4
Nonmanufactured articles.....	10.231	181.8	176.0	-37.5	-9.7	-5.9	0.7	-3.2
Manufactured articles.....	89.547	103.9	103.7	-4.3	-0.5	-0.5	-0.4	-0.2
Canada	100.000	118.0	117.4	-18.0	-5.1	-3.0	0.2	-0.5
Nonmanufactured articles.....	20.805	115.8	112.7	-42.3	-17.0	-7.9	5.9	-2.7
Manufactured articles.....	78.563	122.8	122.9	-7.8	-1.2	-1.7	-1.2	0.1
European Union⁴	100.000	132.8	132.3	-3.9	-0.5	-1.1	0.2	-0.4
Manufactured articles.....	99.407	129.3	128.9	-3.7	-0.5	-1.1	0.1	-0.3
France (Dec. 2003=100)	100.000	121.5	121.3	-1.5	-0.1	0.0	-0.2	-0.2
Germany (Dec. 2003=100)	100.000	116.9	116.8	-1.4	-0.3	0.1	0.1	-0.1
United Kingdom (Dec. 2003=100)	100.000	121.0	120.8	-5.0	-0.4	0.0	-0.1	-0.2
Latin America⁵	100.000	142.0	140.8	-12.7	-2.6	-1.2	-0.4	-0.8
Nonmanufactured articles.....	17.457	203.5	196.7	-34.1	-10.6	-3.4	2.1	-3.3
Manufactured articles.....	82.142	121.1	120.8	-6.1	-0.7	-0.8	-1.0	-0.2
Mexico (Dec. 2003=100)	100.000	127.7	127.3	-7.3	-1.3	-0.8	-0.3	-0.3
Nonmanufactured articles (Dec. 2008=100).....	9.359	111.2	107.0	-35.1	-11.1	-6.3	2.6	-3.8
Manufactured articles (Dec. 2008=100)...	90.325	89.6	89.6	-3.0	0.0	-0.2	-0.7	0.0
Pacific Rim (Dec. 2003=100)⁶	100.000	99.6	99.4	-2.5	-0.2	-0.1	-0.2	-0.2
China (Dec. 2003=100)	100.000	102.3	102.0	-1.5	-0.1	-0.2	-0.1	-0.3
Japan	100.000	95.2	95.2	-3.3	-0.3	-0.1	0.0	0.0
Asian NICs⁷	100.000	85.9	85.4	-3.6	0.1	0.0	-0.1	-0.6
ASEAN (Dec. 2003=100)⁸	100.000	98.1	98.0	-3.6	0.5	-0.6	-0.1	-0.1
Asia Near East (Dec. 2003=100)⁹	100.000	150.0	146.3	-35.7	-7.7	-7.3	-1.1	-2.5

¹ Relative importance figures are based on 2013 trade values.

² Western Europe, Canada, Japan, Australia, New Zealand and South Africa.

³ Eastern Europe, Latin America, OPEC countries, and other countries in Asia, Africa and the Western Hemisphere.

⁴ European Union countries.

⁵ Mexico, Central America, South America and the Caribbean.

⁶ China, Japan, Australia, Brunei, Indonesia, Macao, Malaysia, New Zealand, Papua New Guinea, Philippines and the Asian Newly Industrialized Countries.

⁷ Asian Newly Industrialized Countries - Hong Kong, Singapore, South Korea and Taiwan.

⁸ Association of Southeast Asian Nations - Brunei, Cambodia, Indonesia, Laos, Malaysia, Myanmar, Philippines, Singapore, Thailand and Vietnam.

⁹ Bahrain, Iran, Iraq, Israel, Jordan, Kuwait, Lebanon, Oman, Qatar, Saudi Arabia, Syria, United Arab Emirates and Yemen.

NOTES: Data may be revised in each of the 3 months after original publication.

Regions are not mutually exclusive.

Dash = Not available

Table 8. U.S. international price indexes and percent changes for selected transportation services: November 2014 to November 2015

[2000=100, unless otherwise noted]

Description	Relative importance Oct. 2015 ¹	Index		Percent change				
		Oct. 2015	Nov. 2015	Annual Nov. 2014 to Nov. 2015	Monthly			
					July 2015 to Aug. 2015	Aug. 2015 to Sept. 2015	Sept. 2015 to Oct. 2015	Oct. 2015 to Nov. 2015
Air Freight								
Import Air Freight	100.000	166.1	167.4	-1.5	-1.7	-2.2	5.1	0.8
Europe (Dec. 2003=100).....	23.083	147.1	144.4	-15.3	-0.3	-0.3	-0.4	-1.8
Asia.....	65.567	150.5	153.6	4.1	-2.3	-3.3	8.0	2.1
Export Air Freight	100.000	156.1	156.7	-1.1	-0.5	-0.6	-0.3	0.4
Europe (Dec. 2006=100).....	33.074	148.9	149.4	4.5	-0.5	-0.7	-0.5	0.3
Inbound Air Freight	100.000	155.2	156.0	-3.6	-1.7	-0.9	2.7	0.5
Europe (Dec. 2003=100).....	25.473	137.8	137.3	-10.4	-1.1	-0.3	-0.6	-0.4
Asia.....	60.600	140.9	142.5	-1.8	-2.4	-2.1	4.8	1.1
Outbound Air Freight	100.000	145.0	145.0	-5.1	-1.0	-0.6	-2.3	0.0
Europe (Dec. 2003=100).....	31.960	158.4	157.7	-8.4	0.8	-0.3	-0.5	-0.4
Asia.....	43.728	136.0	136.5	-5.6	-1.9	-0.6	-4.6	0.4
Air Passenger Fares								
Import Air Passenger Fares	100.000	188.6	195.6	-2.2	-5.1	-4.5	5.2	3.7
Europe.....	44.082	221.3	232.6	2.6	-8.9	3.9	3.8	5.1
Asia.....	22.848	142.2	141.2	-4.8	-4.6	-7.7	5.1	-0.7
Latin America/Caribbean.....	8.506	149.0	149.3	-11.3	-0.4	-9.2	0.1	0.2
Export Air Passenger Fares	100.000	154.6	153.3	-11.9	1.5	-11.5	-1.4	-0.8
Europe.....	31.610	206.4	211.7	-2.3	-10.1	-0.3	-3.4	2.6
Asia.....	27.835	134.1	132.7	-12.9	20.6	-23.0	0.4	-1.0
Latin America/Caribbean.....	21.870	152.3	154.5	-14.5	-1.8	-13.5	2.4	1.4

¹ Relative importance figures are based on 2013 trade values.

NOTES: Data may be revised in each of the 3 months after original publication.

Dash = Not available

TECHNICAL NOTE

Import and Export Merchandise and Services Price Indexes - All indexes use a modified Laspeyres formula and are not seasonally adjusted. Price indexes are reweighted annually, with a 2-year lag in the weights. Published series use a base year of 2000=100 where possible. More detailed index series and additional information may be obtained at www.bls.gov/mxp or by calling (202) 691-7101.

Merchandise Goods Classification Systems - The merchandise price indexes are published using three classification systems. Items are classified by end use according to the Bureau of Economic Analysis Classification System, by industry according to the North American Industry Classification System (NAICS), and by product category according to the Harmonized System (HS). While classification by end use and product category are self-explanatory, some notes are in order for classifying items by industry. In the NAICS imports and exports tables, items are classified by output industry, not input industry. As an example, NAICS import index 326 (plastics and rubber products manufacturing) include outputs such as manufactured plastic rather than inputs such as petroleum. The NAICS classification structure also matches the classification system used by the Producer Price Index (PPI) to produce the NAICS primary products indexes.

Import Price Indexes - Products have been classified by the Harmonized Tariff Schedule of the United States Annotated (TSUSA). Import prices are based on U.S. dollar prices paid by the U.S. importer. The prices are generally either "free on board" (f.o.b.) foreign port or "cost, insurance, and freight" (c.i.f.) U.S. port transaction prices, depending on the practices of the individual industry. The index for crude petroleum is calculated from data collected by the U.S. Department of Energy.

Export Price Indexes - Products have been classified by the Harmonized Schedule B classification system of the U.S. Bureau of the Census. The prices used are generally either "free alongside ship" (f.a.s.) factory or "free on board" (f.o.b.) transaction prices, depending on the practices of the individual industry. Prices used in the grain index, excluding rice, are obtained from the U.S. Department of Agriculture.

Services Price Indexes - Starting in September 2008, the import air passenger fares indexes represent changes in the average revenue per passenger received by foreign carriers from U.S. residents and are calculated from data obtained from an airline consulting service. These data include tickets sold by travel agencies and travel websites. Tickets sold directly by the airlines are excluded, as are frequent flyer tickets generally. Starting in January 2008, the export air passenger fares indexes represent changes in the average revenue per passenger received by U.S. carriers from foreign residents and are calculated from data collected directly from airlines. These data include frequent flyer tickets and those sold by consolidators. Taxes and fees are included in the import air passenger fares indexes and excluded from the export air passenger fares indexes. The air freight indexes are calculated from data collected directly from airlines. These data exclude mail and passenger baggage. The scope of the service being priced is the movement of freight from airport to airport only, and does not include any ground transportation or port service. The air freight indexes are presented using two definitions: balance of payments (which represent transactions between U.S. and foreign residents) and international (which represent transactions inbound to and outbound from the U.S.). Fact sheets specifying detailed information for each services industry are available at www.bls.gov/mxp under "MXP Publications."

Import Indexes by Locality of Origin - Prices used in these indexes are a subset of the data collected for the import price indexes. Beginning with January 2002, the indexes are defined by locality of origin using a nomenclature based upon the North American Industry Classification System (NAICS). Nonmanufactured goods are defined as NAICS 11 and 21, and manufactured goods are defined as NAICS 31-33.

Revision Policy - To reflect the availability of late reports and corrections by respondents, monthly data may be revised in each of the 3 months after original publication. After 3 months, no further data revisions take place. For example, data first published in the January release will be subject to revision in the releases for February, March, and April.

Uses of the Data - The primary use of the indexes is to deflate trade statistics, notably the foreign trade sector of the National Income and Product Accounts (NIPA) constructed by the Department of Commerce. Other published indexes are useful for general market analysis. For trade in international services, balance of payments indexes are used for deflating NIPA, while international indexes are more appropriate for market analysis. Merchandise and services indexes also can be used to study U.S. competitiveness and to compute price elasticities, and the merchandise import indexes by country or region of origin are useful in terms of trade analysis.

Email Subscription - The U.S. import and export price indexes news release is available through an email subscription service at www.bls.gov/bls/list.htm.

Additional Information - More detailed data are available on the Import/Export Price Indexes home page at www.bls.gov/mxp. For import and export price indexes data requests, send an email to mxpinfo@bls.gov.

Information from this release will be made available to sensory impaired individuals upon request.
Voice phone: (202)-691-5200; Federal Relay Service: 1-(800)-877-8339.