



Transmission of material in this news release is embargoed until 8:30 a.m. (ET) Friday, June 5, 2026

USDL-26-0786

Technical information:

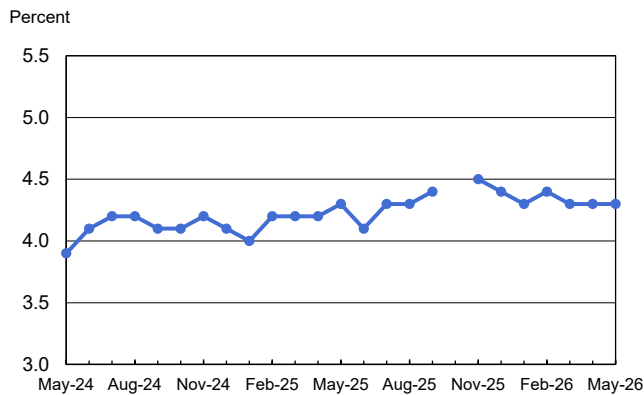
Household data: (202) 691-6378 • cpsinfo@bls.gov • www.bls.gov/cps
 Establishment data: (202) 691-6555 • cesinfo@bls.gov • www.bls.gov/ces

Media contact: (202) 691-5902 • PressOffice@bls.gov

THE EMPLOYMENT SITUATION — MAY 2026

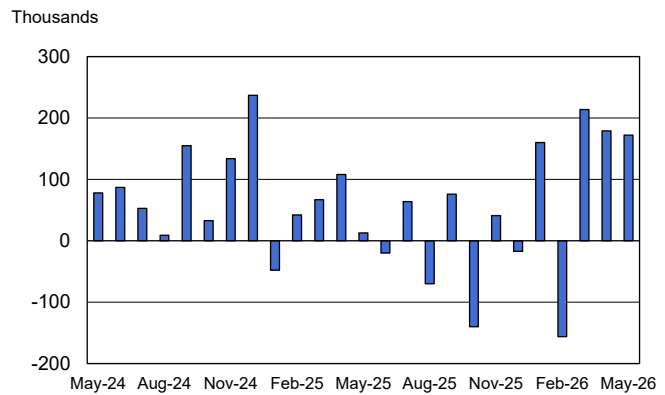
Total **nonfarm payroll employment** increased by 172,000 in May, and the **unemployment rate** was unchanged at 4.3 percent, the U.S. Bureau of Labor Statistics reported today. Job gains occurred in leisure and hospitality, local government, and health care. Employment in financial activities declined.

Chart 1. Unemployment rate, seasonally adjusted, May 2024 – May 2026



Note: Data for October 2025 were not collected due to the federal government shutdown.

Chart 2. Nonfarm payroll employment over-the-month change, seasonally adjusted, May 2024 – May 2026



This news release presents statistics from two monthly surveys. The household survey measures labor force status, including unemployment, by demographic characteristics. The establishment survey measures nonfarm employment, hours, and earnings by industry. For more information about the concepts and statistical methodology used in these two surveys, see the Technical Note.

Household Survey Data

The major labor market indicators from the survey of households continued to show little or no change in May. The **unemployment rate** held at 4.3 percent and has remained in a narrow range of 4.3 percent to 4.5 percent since July 2025. The number of **unemployed people**, at 7.3 million, changed little over the month. (See table A-1.)

Among the **major worker groups**, the unemployment rates showed little or no change in May for adult men (4.0 percent), adult women (3.8 percent), teenagers (14.7 percent), and people who are White (3.8 percent), Black (6.6 percent), Asian (3.8 percent), or Hispanic (5.0 percent). (See tables A-1, A-2, and A-3.)

The number of people **jobless less than 5 weeks** declined by 286,000 to 2.2 million in May, largely offsetting an increase in the prior month. The number of **long-term unemployed** (those jobless for 27 weeks or more) was little changed over the month at 2.0 million but is up by 524,000 over the year. The long-term unemployed accounted for 27.5 percent of all unemployed people in May. (See table A-12.)

The **labor force participation rate** held at 61.8 percent in May, and the **employment-population ratio** changed little at 59.2 percent. These measures showed little change over the year, after accounting for annual population control adjustments. (See table A-1.)

The number of people employed **part time for economic reasons**, at 4.8 million, changed little in May. These individuals would have preferred full-time employment but were working part time because their hours had been reduced or they were unable to find full-time jobs. (See table A-8.)

In May, the number of people **not in the labor force who currently want a job** changed little at 6.2 million. These individuals were not counted as unemployed because they were not actively looking for work during the 4 weeks preceding the survey or were unavailable to take a job. (See table A-1.)

Among those not in the labor force who wanted a job, the number of people **marginally attached to the labor force** changed little at 1.7 million in May. These individuals wanted and were available for work and had looked for a job sometime in the prior 12 months but had not looked for work in the 4 weeks preceding the survey. The number of **discouraged workers**, a subset of the marginally attached who believed that no jobs were available for them, was 486,000 in May, essentially unchanged from the previous month. (See Summary table A.)

Establishment Survey Data

Total **nonfarm payroll employment** increased by 172,000 in May, similar to the gain of 179,000 in April. In May, job gains occurred in leisure and hospitality, local government, and health care. Employment in financial activities declined. (See table B-1.)

Leisure and hospitality added 70,000 jobs in May, well above the average monthly gain of 14,000 over the prior 12 months. Over the month, food services and drinking places added 48,000 jobs.

In May, employment in **local government** rose by 55,000, largely reflecting a gain in local government, excluding education (+44,000).

Health care added 35,000 jobs in May, in line with the average monthly gain of 38,000 over the prior 12 months. Over the month, ambulatory health care services added 26,000 jobs, including a gain of 11,000 in home health care services. Employment continued to trend up in hospitals (+6,000).

Social assistance employment continued to trend up in May (+12,000), mostly in individual and family services (+10,000). Over the prior 12 months, social assistance had added an average of 17,000 jobs per month.

Employment in **mining, quarrying, and oil and gas extraction** increased by 5,000 in May and is up by 10,000 since February.

Financial activities employment declined by 22,000 in May and is down by 107,000 since a recent peak in May 2025. Over the month, job losses occurred in insurance carriers and related activities (-11,000) and commercial banking (-3,000).

Employment in **transportation and warehousing** was essentially unchanged in May (+1,000) but is down by 92,000 since reaching a peak in February 2025. Over the month, transit and ground passenger transportation (+9,000) and warehousing and storage (+6,000) added jobs. Air transportation lost 9,000 jobs, largely reflecting a business closure.

Employment showed little change over the month in other major industries, including **construction, manufacturing, wholesale trade, retail trade, information, professional and business services, and other services.**

In May, **average hourly earnings for all employees** on private nonfarm payrolls rose by 12 cents, or 0.3 percent, to \$37.53. Over the year, average hourly earnings have increased by 3.4 percent. In May, average hourly earnings of private-sector **production and nonsupervisory employees** rose by 8 cents, or 0.2 percent, to \$32.31. (See tables B-3 and B-8.)

The **average workweek for all employees** on private nonfarm payrolls was unchanged at 34.3 hours in May. In manufacturing, the average workweek was unchanged at 40.4 hours, and overtime edged up to 3.1 hours. The average workweek for **production and nonsupervisory employees** on private nonfarm payrolls remained at 33.8 hours. (See tables B-2 and B-7.)

The change in total nonfarm payroll employment for March was revised up by 29,000, from +185,000 to +214,000, and the change for April was revised up by 64,000, from +115,000 to +179,000. With these revisions, employment in March and April combined is 93,000 higher than previously reported. (Monthly revisions result from additional reports received from businesses and government agencies since the last published estimates and from the recalculation of seasonal factors.)

The Employment Situation for June is scheduled to be released on Thursday, July 2, 2026, at 8:30 a.m. (ET).

HOUSEHOLD DATA

Summary table A. Household data, seasonally adjusted

[Numbers in thousands]

Category	May 2025	Mar. 2026	Apr. 2026	May 2026	Change from: Apr. 2026-May 2026
Employment status					
Civilian noninstitutional population ¹	273,385	274,858	274,955	275,054	99
Civilian labor force.....	170,492	170,087	169,995	170,078	83
Participation rate.....	62.4	61.9	61.8	61.8	0.0
Employed.....	163,244	162,848	162,622	162,771	149
Employment-population ratio.....	59.7	59.2	59.1	59.2	0.1
Unemployed.....	7,248	7,239	7,373	7,307	-66
Unemployment rate.....	4.3	4.3	4.3	4.3	0.0
Not in labor force.....	102,893	104,771	104,959	104,976	17
Unemployment rates					
Total, 16 years and over.....	4.3	4.3	4.3	4.3	0.0
Adult men (20 years and over).....	3.9	3.8	4.0	4.0	0.0
Adult women (20 years and over).....	3.9	4.0	3.9	3.8	-0.1
Teenagers (16 to 19 years).....	13.4	13.7	14.4	14.7	0.3
White.....	3.8	3.6	3.7	3.8	0.1
Black or African American.....	6.1	7.1	7.3	6.6	-0.7
Asian.....	3.6	3.7	3.3	3.8	0.5
Hispanic or Latino ethnicity.....	5.1	4.8	5.0	5.0	0.0
Total, 25 years and over.....	3.4	3.6	3.6	3.5	-0.1
Less than a high school diploma.....	5.6	5.9	6.4	6.0	-0.4
High school graduates, no college.....	4.4	4.7	4.7	4.4	-0.3
Some college or associate degree.....	3.3	3.6	3.2	3.6	0.4
Bachelor's degree and higher.....	2.6	2.8	2.8	2.7	-0.1
Reason for unemployment					
Job losers and people who completed temporary jobs.....	3,459	3,403	3,511	3,385	-126
Job leavers.....	706	898	844	916	72
Reentrants.....	2,291	2,254	2,282	2,209	-73
New entrants.....	734	714	805	818	13
Duration of unemployment					
Less than 5 weeks.....	2,456	2,138	2,496	2,210	-286
5 to 14 weeks.....	2,203	1,998	1,859	1,946	87
15 to 26 weeks.....	1,042	1,212	1,057	1,077	20
27 weeks and over.....	1,464	1,821	1,833	1,988	155
Employed people at work part time					
Part time for economic reasons.....	4,624	4,497	4,942	4,805	-137
Slack work or business conditions.....	3,009	3,107	3,289	3,263	-26
Could only find part-time work.....	1,376	1,126	1,267	1,208	-59
Part time for noneconomic reasons.....	22,600	22,767	22,706	22,853	147
People not in the labor force					
Marginally attached to the labor force.....	1,571	1,944	1,792	1,723	-69
Discouraged workers.....	390	510	475	486	11

¹ The population figures are not adjusted for seasonal variation.

NOTE: People whose ethnicity is identified as Hispanic or Latino may be of any race. Detail for the seasonally adjusted data shown in this table will not necessarily add to totals because of the independent seasonal adjustment of the various series. Updated population controls are introduced annually with the release of January data.

ESTABLISHMENT DATA
Summary table B. Establishment data, seasonally adjusted

Category	May 2025	Mar. 2026	Apr. 2026 ^p	May 2026 ^p
EMPLOYMENT BY SELECTED INDUSTRY (Over-the-month change, in thousands)				
Total nonfarm.....	13	214	179	172
Total private.....	20	202	177	120
Goods-producing.....	-17	33	14	28
Mining and logging.....	-4	3	5	4
Construction.....	-2	15	9	17
Manufacturing.....	-11	15	0	7
Durable goods ¹	-8	13	2	17
Motor vehicles and parts.....	2.2	1.7	-4.6	3.6
Nondurable goods.....	-3	2	-2	-10
Private service-providing.....	37	169	163	92
Wholesale trade.....	0.8	-1.7	-1.8	-3.7
Retail trade.....	-21.6	9.6	23.5	-1.1
Transportation and warehousing.....	0.1	25.1	39.3	0.6
Utilities.....	2.6	-0.5	1.0	1.4
Information.....	-1	1	-8	-2
Financial activities.....	6	-17	-6	-22
Professional and business services ¹	-20	28	22	6
Temporary help services.....	-14.4	8.0	8.7	1.4
Private education and health services ¹	60	95	54	40
Health care and social assistance.....	65.0	92.7	58.0	47.2
Leisure and hospitality.....	3	44	30	70
Other services.....	7	-14	9	3
Government.....	-7	12	2	52
(3-month average change, in thousands)				
Total nonfarm.....	63	73	79	188
Total private.....	62	78	77	166
WOMEN AND PRODUCTION AND NONSUPERVISORY EMPLOYEES AS A PERCENT OF ALL EMPLOYEES ²				
Total nonfarm women employees.....	50.0	50.0	50.0	50.0
Total private women employees.....	48.5	48.5	48.6	48.6
Total private production and nonsupervisory employees.....	81.5	81.6	81.7	81.7
HOURS AND EARNINGS ALL EMPLOYEES				
Total private				
Average weekly hours.....	34.2	34.2	34.3	34.3
Average hourly earnings.....	\$36.28	\$37.35	\$37.41	\$37.53
Average weekly earnings.....	\$1,240.78	\$1,277.37	\$1,283.16	\$1,287.28
Index of aggregate weekly hours (2007=100) ³	115.8	116.2	116.7	116.8
Over-the-month percent change.....	-0.3	-0.1	0.4	0.1
Index of aggregate weekly payrolls (2007=100) ⁴	200.9	207.5	208.7	209.5
Over-the-month percent change.....	0.1	0.1	0.6	0.4
DIFFUSION INDEX (Over 1-month span) ⁵				
Total private (250 industries).....	44.2	54.0	54.0	54.4
Manufacturing (72 industries).....	34.7	49.3	46.5	53.5

¹ Includes other industries, not shown separately.

² Data relate to production employees in mining and logging and manufacturing, construction employees in construction, and nonsupervisory employees in the service-providing industries.

³ The indexes of aggregate weekly hours are calculated by dividing the current month's estimates of aggregate hours by the corresponding annual average aggregate hours.

⁴ The indexes of aggregate weekly payrolls are calculated by dividing the current month's estimates of aggregate weekly payrolls by the corresponding annual average aggregate weekly payrolls.

⁵ Figures are the percent of industries with employment increasing plus one-half of the industries with unchanged employment, where 50 percent indicates an equal balance between industries with increasing and decreasing employment.

p Preliminary

NOTE: Data have been revised to reflect March 2025 benchmark levels and updated seasonal adjustment factors.

Frequently Asked Questions about Employment and Unemployment Estimates

1. Why are there two monthly measures of employment?

The household survey and establishment survey both produce sample-based estimates of employment, and both have strengths and limitations. The establishment survey employment series has a smaller margin of error on the measurement of month-to-month change than the household survey because of its much larger sample size. An over-the-month employment change of about 122,000 is statistically significant in the establishment survey, while the threshold for a statistically significant change in the household survey is about 650,000. However, the household survey has a more expansive scope than the establishment survey because it includes self-employed workers whose businesses are unincorporated, unpaid family workers, agricultural workers, and private household workers, who are excluded by the establishment survey. The household survey also provides estimates of employment for demographic groups. For more information on the differences between the two surveys, please visit www.bls.gov/web/empsit/ces_cps_trends.htm.

2. Are undocumented immigrants counted in the surveys?

It is likely that both surveys include at least some undocumented immigrants. However, neither the establishment nor the household survey is designed to identify the legal status of workers. Therefore, it is not possible to determine how many are counted in either survey. The establishment survey does not collect data on the legal status of workers. The household survey does include questions which identify the foreign and native born, but it does not include questions about the legal status of the foreign born. Data on the foreign and native born are published each month in table A-7 of The Employment Situation news release.

3. Why does the establishment survey have revisions?

The establishment survey revises published estimates to improve its data series by incorporating additional information that was not available at the time of the initial publication of the estimates. The establishment survey revises its initial monthly estimates twice, in the immediately succeeding 2 months, to incorporate additional sample receipts from respondents in the survey and recalculated seasonal adjustment factors. For more information on the monthly revisions, please visit www.bls.gov/web/empsit/cestn.htm#Revisions-Between-Preliminary-and-Final-Data.

On an annual basis, the establishment survey incorporates a benchmark revision that re-anchors estimates to nearly complete employment counts available from unemployment insurance tax records. The benchmark helps to control for sampling and modeling errors in the estimates. For more information on the annual benchmark revision, please visit www.bls.gov/web/empsit/cesbmart.htm.

4. Does the establishment survey sample include small firms?

Yes. About 46 percent of the establishment survey sample is comprised of business establishments with fewer than 20 employees. The establishment survey sample is designed to maximize the reliability of the statewide total nonfarm employment estimate; firms from all states, size classes, and industries are appropriately sampled to achieve that goal.

5. Does the establishment survey account for employment from new businesses?

Yes. Monthly establishment survey estimates include an adjustment to account for the net employment change generated by business births and deaths. The adjustment comes from an econometric model that forecasts the monthly net jobs impact of business births and deaths based on the actual past values of the net impact that can be observed with a lag from the Quarterly Census of Employment and Wages. The establishment survey uses modeling rather than sampling for this purpose because the survey is not immediately able to bring new businesses into the sample. There is an unavoidable lag between the birth of a new firm and its appearance on the sampling frame and availability for selection. BLS adds new businesses to the survey twice a year. More information on business births and deaths in the establishment survey is available at www.bls.gov/web/empsit/cesbd.htm.

6. Is the count of unemployed people limited to just those receiving unemployment insurance benefits?

No. The estimate of unemployment is based on a monthly sample survey of households. All people who are without jobs and are actively seeking and available to work are included among the unemployed. (People on temporary layoff are included even if they do not actively seek work.) There is no requirement or question relating to unemployment insurance benefits in the monthly survey.

7. Does the official unemployment rate exclude people who want a job but are not currently looking for work?

Yes. However, there are separate estimates of people outside the labor force who want a job, including those who are not currently looking because they believe no jobs are available (discouraged workers). In addition, alternative measures of labor underutilization (some of which include discouraged workers and other groups not officially counted as unemployed) are published each month in table A-15 of The Employment Situation news release. For more information about these alternative measures, please visit www.bls.gov/cps/lfcharacteristics.htm#altmeasures.

8. How can unusually severe weather affect employment and hours estimates?

In the establishment survey, the reference period is the pay period that includes the 12th of the month. Unusually severe weather is more likely to have an impact on average weekly hours than on employment. Average weekly hours are estimated for paid time during the pay period, including pay for holidays, sick leave, or other time off. The impact of severe weather on hours estimates typically, but not always, results in a reduction in average weekly hours. For example, some employees may be off work for part of the pay period and not receive pay for the time missed, while some workers, such as those dealing with cleanup or repair, may work extra hours.

It is not possible to precisely quantify the effect of extreme weather on payroll employment estimates. In order for severe weather conditions to reduce employment estimates, employees have to be off work without pay for the entire pay period. Employees who receive pay for any part of the pay period, even 1 hour, are counted in the payroll employment figures. For more information on how often employees are paid, please visit www.bls.gov/ces/publications/length-pay-period.htm.

In the household survey, the reference period is generally the calendar week that includes the 12th of the month. People who miss the entire week's work for weather-related events are counted as employed whether or not they are paid for the time off. The household survey collects data on the number of people who had a job but were not at work due to bad weather. It also provides a measure of the number of people who usually work full time but had reduced hours due to bad weather.

Current and historical data are available on the household survey's most requested statistics page, please visit data.bls.gov/toppicks?survey=ln.

Technical Note

This news release presents statistics from two major surveys, the Current Population Survey (CPS; household survey) and the Current Employment Statistics survey (CES; establishment survey). The household survey provides information on the labor force, employment, and unemployment that appears in the "A" tables, marked HOUSEHOLD DATA. It is a sample survey of about 60,000 eligible households conducted by the U.S. Census Bureau for the U.S. Bureau of Labor Statistics (BLS).

The establishment survey provides information on employment, hours, and earnings of employees on nonfarm payrolls; the data appear in the "B" tables, marked ESTABLISHMENT DATA. BLS collects these data each month from the payroll records of a sample of nonagricultural business establishments. Each month the CES program surveys about 119,000 businesses and government agencies, representing approximately 622,000 individual worksites, in order to provide detailed industry data on employment, hours, and earnings of workers on nonfarm payrolls. The active sample includes approximately 26 percent of all nonfarm payroll jobs.

For both surveys, the data for a given month relate to a particular week or pay period. In the household survey, the reference period is generally the calendar week that contains the 12th day of the month. In the establishment survey, the reference period is the pay period including the 12th, which may or may not correspond directly to the calendar week.

Coverage, definitions, and differences between surveys

Household survey. The sample is selected to reflect the entire civilian noninstitutional population. Based on responses to a series of questions on work and job search activities, each person 16 years and over in a sample household is classified as employed, unemployed, or not in the labor force.

People are classified as *employed* if they did any work at all as paid employees during the reference week; worked in their own business, profession, or on their own farm; or worked without pay at least 15 hours in a family business or farm. People are also counted as employed if they were temporarily absent from their jobs because of illness, bad weather, vacation, labor-management disputes, or personal reasons.

People are classified as *unemployed* if they meet all of the following criteria: they had no employment during the reference week; they were available for work at that time; and they made specific active efforts to find employment sometime during the 4-week period ending with the reference week. People laid off from a job and expecting recall need not be looking for work to be counted as unemployed. The unemployment data derived from the household survey in no way depend upon the eligibility for or receipt of unemployment insurance benefits.

The *civilian labor force* is the sum of the employed and unemployed. Those people not classified as employed or unemployed are *not in the labor force*. The

unemployment rate is the number unemployed as a percent of the labor force. The *labor force participation rate* is the labor force as a percent of the population, and the *employment-population ratio* is the employed as a percent of the population. Additional information about the household survey can be found at www.bls.gov/cps/documentation.htm.

Establishment survey. The sample establishments are drawn from private nonfarm businesses such as factories, offices, and stores, as well as from federal, state, and local government entities. *Employees on nonfarm payrolls* are those who worked or received pay for any part of the reference pay period, including people on paid leave. People are counted in each job they hold. *Hours and earnings* data are produced for the private sector for all employees and for production and nonsupervisory employees. *Production and nonsupervisory* employees are defined as production and related employees in manufacturing and mining and logging, construction workers in construction, and non-supervisory employees in private service-providing industries.

Industries are classified on the basis of an establishment's principal activity in accordance with the 2022 version of the North American Industry Classification System. Additional information about the establishment survey can be found at www.bls.gov/ces/.

Differences in employment estimates. The numerous conceptual and methodological differences between the household and establishment surveys result in important distinctions in the employment estimates derived from the surveys. Among these are:

- The household survey includes agricultural workers, self-employed workers whose businesses are unincorporated, unpaid family workers, and private household workers among the employed. These groups are excluded from the establishment survey.
- The household survey includes people on unpaid leave among the employed. The establishment survey does not.
- The household survey is limited to workers 16 years of age and older. The establishment survey is not limited by age.
- The household survey has no duplication of individuals, because individuals are counted only once, even if they hold more than one job. In the establishment survey, employees working at more than one job and thus appearing on more than one payroll are counted separately for each appearance.

Seasonal adjustment

Over the course of a year, the size of the nation's labor force and the levels of employment and unemployment undergo regularly occurring fluctuations. These events may result from seasonal changes in weather, major holidays, and the opening and closing of schools. The effect of such seasonal variation can be very large.

Because these seasonal events follow a more or less regular pattern each year, their influence on the level of a series can be tempered by adjusting for regular seasonal variation. These adjustments make nonseasonal developments, such as declines in employment or increases in the participation of women in the labor force, easier to spot. For example, in the household survey, the large number of youth entering the labor force each June is likely to obscure any other changes that have taken place relative to May, making it difficult to determine if the level of economic activity has risen or declined. Similarly, in the establishment survey, payroll employment in education declines by about 20 percent at the end of the spring term and later rises with the start of the fall term, obscuring the underlying employment trends in the industry. Because seasonal employment changes at the end and beginning of the school year can be estimated, the statistics can be adjusted to make underlying employment patterns more discernible. The seasonally adjusted figures provide a more useful tool with which to analyze changes in month-to-month economic activity.

Many seasonally adjusted series are independently adjusted in both the household and establishment surveys. However, the adjusted series for many major estimates, such as total payroll employment, employment in most major sectors, total employment, and unemployment are computed by aggregating independently adjusted component series. For example, total unemployment is derived by summing the adjusted series for four major age-sex components; this differs from the unemployment estimate that would be obtained by directly adjusting the total or by combining the duration, reasons, or more detailed age categories. Percentage distributions of unemployment by reason and duration are derived from the sum of the independently seasonally adjusted component series and will not necessarily match calculations made using the seasonally adjusted total unemployment level. Additional information about seasonal adjustment in the household survey can be found at www.bls.gov/cps/documentation.htm#sa.

For both the household and establishment surveys, a concurrent seasonal adjustment methodology is used in which new seasonal factors are calculated each month using all relevant data, up to and including the data for the current month. In the household survey, new seasonal factors are used to adjust only the current month's data. In the establishment survey, however, new seasonal factors are used each month to adjust the three most recent monthly estimates. The prior 2 months are routinely revised to incorporate additional sample reports and recalculated seasonal adjustment factors. In both surveys, 5-year revisions to historical data are made once a year.

Reliability of the estimates

Statistics based on the household and establishment surveys are subject to both sampling and nonsampling error. When a sample, rather than the entire population, is surveyed, there is a chance that the sample estimates may differ from the true population values they represent. The component of this difference that occurs because samples differ by chance is known as *sampling error*, and its variability is measured by the standard error of the estimate. There is about a 90-percent chance, or level of confidence, that an estimate based on a sample will differ by no more than 1.6 standard errors from the true population value because of sampling error. BLS analyses are generally conducted at the 90-percent level of confidence.

For example, the confidence interval for the monthly change in total nonfarm employment from the establishment survey is on the order of plus or minus 122,000. Suppose the estimate of nonfarm employment increases by 50,000 from one month to the next. The 90-percent confidence interval on the monthly change would range from -72,000 to +172,000 (50,000 +/- 122,000). These figures do not mean that the sample results are off by these magnitudes, but rather that there is about a 90-percent chance that the true over-the-month change lies within this interval. Since this range includes values of less than zero, we could not say with confidence that nonfarm employment had, in fact, increased that month. If, however, the reported nonfarm employment rise was 250,000, then all of the values within the 90-percent confidence interval would be greater than zero. In this case, it is likely (at least a 90-percent chance) that nonfarm employment had, in fact, risen that month. At an unemployment rate of around 6.0 percent, the 90-percent confidence interval for the monthly change in unemployment as measured by the household survey is about +/- 425,000, and for the monthly change in the unemployment rate it is about +/- 0.3 percentage point.

In general, estimates involving many individuals or establishments have lower standard errors (relative to the size of the estimate) than estimates which are based on a small number of observations. The precision of estimates also is improved when the data are cumulated over time, such as for quarterly and annual averages.

The household and establishment surveys are also affected by *nonsampling error*, which can occur for many reasons, including the failure to sample a segment of the population, inability to obtain information for all respondents in the sample, inability or unwillingness of respondents to provide correct information on a timely basis, mistakes made by respondents, and errors made in the collection or processing of the data.

For example, in the establishment survey, estimates for the most recent 2 months are based on incomplete returns; for this reason, these estimates are labeled preliminary in the tables. It is only after two successive revisions to a monthly estimate, when nearly all sample reports have been received, that the estimate is considered final.

Another major source of nonsampling error in the establishment survey is the inability to capture, on a timely basis, employment generated by new firms. To correct for this systematic underestimation of employment growth, an estimation procedure with two components is used to account for business births. The first component excludes employment losses from business deaths from sample-based estimation in order to offset the missing employment gains from business births. This is incorporated into the sample-based estimation procedure by simply not reflecting sample units going out of business, but imputing to them the same employment trend as the other firms in the sample. This procedure accounts for most of the net birth/death employment.

The second component is an ARIMA time series model designed to estimate the residual net birth-death employment not accounted for by the imputation. The historical time series used in the ARIMA model is derived from the unemployment insurance universe micro-level database and reflects the actual residual net of births and deaths over the past 5 years. In addition to this time series of actual residual net of births and deaths series, the ARIMA-based component of the birth-death model includes current sample information to inform the forecasts. More information on business births and deaths in the establishment survey is available at www.bls.gov/web/emp/sit/cesbd.htm.

The sample-based estimates from the establishment survey are adjusted once a year (on a lagged basis) to universe counts of payroll employment obtained from administrative records of the unemployment insurance program. The difference between the March sample-based employment estimates and the March universe counts is known as a benchmark revision, and serves as a rough proxy for total survey error. Benchmarks also incorporate changes in the classification of industries when necessary. The absolute average benchmark revision for total nonfarm employment over the prior 10 years is 0.2 percent. Over this time, revisions ranged from -0.4 percent to 0.3 percent.

Other information

If you are deaf, hard of hearing, or have a speech disability, please dial 7-1-1 to access telecommunications relay services.

HOUSEHOLD DATA

Table A-1. Employment status of the civilian population by sex and age

[Numbers in thousands]

Employment status, sex, and age	Not seasonally adjusted			Seasonally adjusted ¹					
	May 2025	Apr. 2026	May 2026	May 2025	Jan. 2026	Feb. 2026	Mar. 2026	Apr. 2026	May 2026
TOTAL									
Civilian noninstitutional population.....	273,385	274,955	275,054	273,385	274,676	274,766	274,858	274,955	275,054
Civilian labor force.....	170,216	169,548	169,801	170,492	170,465	170,483	170,087	169,995	170,078
Participation rate.....	62.3	61.7	61.7	62.4	62.1	62.0	61.9	61.8	61.8
Employed.....	163,401	162,781	162,897	163,244	163,097	162,912	162,848	162,622	162,771
Employment-population ratio.....	59.8	59.2	59.2	59.7	59.4	59.3	59.2	59.1	59.2
Unemployed.....	6,815	6,768	6,904	7,248	7,368	7,571	7,239	7,373	7,307
Unemployment rate.....	4.0	4.0	4.1	4.3	4.3	4.4	4.3	4.3	4.3
Not in labor force.....	103,169	105,406	105,253	102,893	104,211	104,283	104,771	104,959	104,976
People who currently want a job.....	6,567	5,956	6,756	6,008	5,838	5,974	6,040	6,111	6,187
Men, 16 years and over									
Civilian noninstitutional population.....	133,351	132,670	132,714	133,351	132,546	132,586	132,627	132,670	132,714
Civilian labor force.....	90,249	88,712	89,018	90,388	89,200	89,101	88,846	88,936	89,138
Participation rate.....	67.7	66.9	67.1	67.8	67.3	67.2	67.0	67.0	67.2
Employed.....	86,565	84,981	85,245	86,473	85,348	85,210	85,111	85,007	85,172
Employment-population ratio.....	64.9	64.1	64.2	64.8	64.4	64.3	64.2	64.1	64.2
Unemployed.....	3,685	3,731	3,773	3,915	3,852	3,891	3,736	3,929	3,966
Unemployment rate.....	4.1	4.2	4.2	4.3	4.3	4.4	4.2	4.4	4.4
Not in labor force.....	43,102	43,958	43,696	42,963	43,345	43,485	43,780	43,734	43,576
Men, 20 years and over									
Civilian noninstitutional population.....	124,261	123,704	123,760	124,261	123,570	123,612	123,657	123,704	123,760
Civilian labor force.....	87,032	85,739	85,927	87,100	86,096	86,006	85,796	85,791	85,982
Participation rate.....	70.0	69.3	69.4	70.1	69.7	69.6	69.4	69.4	69.5
Employed.....	83,836	82,420	82,646	83,705	82,783	82,591	82,562	82,353	82,539
Employment-population ratio.....	67.5	66.6	66.8	67.4	67.0	66.8	66.8	66.6	66.7
Unemployed.....	3,196	3,320	3,281	3,395	3,313	3,415	3,235	3,438	3,443
Unemployment rate.....	3.7	3.9	3.8	3.9	3.8	4.0	3.8	4.0	4.0
Not in labor force.....	37,229	37,964	37,833	37,161	37,474	37,606	37,860	37,913	37,778
Women, 16 years and over									
Civilian noninstitutional population.....	140,033	142,284	142,340	140,033	142,130	142,180	142,231	142,284	142,340
Civilian labor force.....	79,967	80,837	80,783	80,103	81,265	81,382	81,241	81,059	80,940
Participation rate.....	57.1	56.8	56.8	57.2	57.2	57.2	57.1	57.0	56.9
Employed.....	76,836	77,799	77,652	76,771	77,749	77,702	77,737	77,615	77,599
Employment-population ratio.....	54.9	54.7	54.6	54.8	54.7	54.7	54.7	54.5	54.5
Unemployed.....	3,130	3,037	3,130	3,333	3,515	3,680	3,503	3,444	3,341
Unemployment rate.....	3.9	3.8	3.9	4.2	4.3	4.5	4.3	4.2	4.1
Not in labor force.....	60,067	61,448	61,558	59,930	60,865	60,798	60,991	61,225	61,400
Women, 20 years and over									
Civilian noninstitutional population.....	131,268	133,648	133,715	131,268	133,489	133,541	133,593	133,648	133,715
Civilian labor force.....	76,861	77,854	77,714	76,959	78,128	78,183	78,007	77,898	77,827
Participation rate.....	58.6	58.3	58.1	58.6	58.5	58.5	58.4	58.3	58.2
Employed.....	74,073	75,168	74,979	73,970	74,925	74,965	74,861	74,872	74,882
Employment-population ratio.....	56.4	56.2	56.1	56.4	56.1	56.1	56.0	56.0	56.0
Unemployed.....	2,787	2,686	2,734	2,989	3,203	3,218	3,146	3,026	2,945
Unemployment rate.....	3.6	3.4	3.5	3.9	4.1	4.1	4.0	3.9	3.8
Not in labor force.....	54,407	55,793	56,002	54,309	55,361	55,358	55,587	55,750	55,889
Both sexes, 16 to 19 years									
Civilian noninstitutional population.....	17,856	17,603	17,579	17,856	17,617	17,613	17,608	17,603	17,579
Civilian labor force.....	6,323	5,955	6,160	6,433	6,241	6,294	6,284	6,307	6,269
Participation rate.....	35.4	33.8	35.0	36.0	35.4	35.7	35.7	35.8	35.7
Employed.....	5,492	5,193	5,271	5,569	5,390	5,357	5,425	5,397	5,350
Employment-population ratio.....	30.8	29.5	30.0	31.2	30.6	30.4	30.8	30.7	30.4
Unemployed.....	831	762	889	864	851	937	858	910	919
Unemployment rate.....	13.1	12.8	14.4	13.4	13.6	14.9	13.7	14.4	14.7
Not in labor force.....	11,533	11,648	11,418	11,423	11,376	11,319	11,324	11,297	11,309

¹ The population figures are not adjusted for seasonal variation; therefore, identical numbers appear in the unadjusted and seasonally adjusted columns.

NOTE: Updated population controls are introduced annually with the release of January data.

HOUSEHOLD DATA

Table A-2. Employment status of the civilian population by race, sex, and age

[Numbers in thousands]

Employment status, race, sex, and age	Not seasonally adjusted			Seasonally adjusted ¹					
	May 2025	Apr. 2026	May 2026	May 2025	Jan. 2026	Feb. 2026	Mar. 2026	Apr. 2026	May 2026
WHITE									
Civilian noninstitutional population.....	207,377	202,448	202,468	207,377	202,423	202,426	202,436	202,448	202,468
Civilian labor force.....	128,277	123,423	123,630	128,490	123,997	123,986	123,841	123,673	123,868
Participation rate.....	61.9	61.0	61.1	62.0	61.3	61.2	61.2	61.1	61.2
Employed.....	123,650	119,209	119,180	123,567	119,412	119,402	119,371	119,071	119,133
Employment-population ratio.....	59.6	58.9	58.9	59.6	59.0	59.0	59.0	58.8	58.8
Unemployed.....	4,627	4,214	4,451	4,923	4,585	4,584	4,470	4,602	4,735
Unemployment rate.....	3.6	3.4	3.6	3.8	3.7	3.7	3.6	3.7	3.8
Not in labor force.....	79,100	79,025	78,838	78,887	78,426	78,441	78,595	78,775	78,600
Men, 20 years and over									
Civilian labor force.....	66,533	63,345	63,584	66,581	63,834	63,768	63,724	63,399	63,656
Participation rate.....	69.5	68.4	68.7	69.6	68.9	68.9	68.8	68.5	68.7
Employed.....	64,299	61,231	61,418	64,193	61,734	61,574	61,684	61,199	61,344
Employment-population ratio.....	67.2	66.1	66.3	67.1	66.7	66.5	66.6	66.1	66.2
Unemployed.....	2,234	2,114	2,166	2,388	2,100	2,194	2,040	2,200	2,312
Unemployment rate.....	3.4	3.3	3.4	3.6	3.3	3.4	3.2	3.5	3.6
Women, 20 years and over									
Civilian labor force.....	56,799	55,717	55,537	56,905	55,661	55,682	55,596	55,698	55,649
Participation rate.....	57.5	56.9	56.7	57.6	56.9	56.9	56.8	56.9	56.8
Employed.....	55,065	54,100	53,799	55,034	53,748	53,874	53,721	53,876	53,776
Employment-population ratio.....	55.7	55.3	55.0	55.7	54.9	55.1	54.9	55.1	54.9
Unemployed.....	1,733	1,617	1,738	1,871	1,913	1,808	1,875	1,821	1,873
Unemployment rate.....	3.1	2.9	3.1	3.3	3.4	3.2	3.4	3.3	3.4
Both sexes, 16 to 19 years									
Civilian labor force.....	4,945	4,361	4,509	5,004	4,502	4,536	4,521	4,577	4,563
Participation rate.....	38.6	36.4	37.7	39.1	37.5	37.8	37.7	38.2	38.1
Employed.....	4,285	3,877	3,963	4,339	3,929	3,955	3,966	3,996	4,012
Employment-population ratio.....	33.5	32.3	33.1	33.9	32.7	33.0	33.1	33.3	33.5
Unemployed.....	660	483	547	664	572	581	555	581	551
Unemployment rate.....	13.3	11.1	12.1	13.3	12.7	12.8	12.3	12.7	12.1
BLACK OR AFRICAN AMERICAN									
Civilian noninstitutional population.....	35,751	35,434	35,455	35,751	35,364	35,388	35,411	35,434	35,455
Civilian labor force.....	22,189	21,986	21,981	22,184	22,160	22,286	22,195	22,044	21,996
Participation rate.....	62.1	62.0	62.0	62.1	62.7	63.0	62.7	62.2	62.0
Employed.....	20,876	20,538	20,581	20,833	20,553	20,579	20,621	20,442	20,543
Employment-population ratio.....	58.4	58.0	58.0	58.3	58.1	58.2	58.2	57.7	57.9
Unemployed.....	1,313	1,449	1,400	1,351	1,607	1,707	1,574	1,602	1,453
Unemployment rate.....	5.9	6.6	6.4	6.1	7.3	7.7	7.1	7.3	6.6
Not in labor force.....	13,562	13,448	13,474	13,567	13,204	13,102	13,216	13,390	13,459
Men, 20 years and over									
Civilian labor force.....	10,416	10,158	10,093	10,410	10,148	10,113	10,057	10,167	10,093
Participation rate.....	68.5	68.2	67.8	68.5	68.3	68.0	67.6	68.3	67.8
Employed.....	9,876	9,490	9,455	9,865	9,402	9,407	9,328	9,464	9,445
Employment-population ratio.....	65.0	63.8	63.5	64.9	63.3	63.3	62.7	63.6	63.4
Unemployed.....	541	668	638	546	747	706	729	703	648
Unemployment rate.....	5.2	6.6	6.3	5.2	7.4	7.0	7.3	6.9	6.4
Women, 20 years and over									
Civilian labor force.....	11,042	11,065	11,123	11,022	11,177	11,369	11,308	11,076	11,116
Participation rate.....	61.8	61.9	62.2	61.7	62.6	63.7	63.3	61.9	62.1
Employed.....	10,371	10,449	10,541	10,328	10,459	10,565	10,617	10,358	10,499
Employment-population ratio.....	58.0	58.4	58.9	57.8	58.6	59.2	59.4	57.9	58.7
Unemployed.....	671	616	582	694	717	804	691	718	617
Unemployment rate.....	6.1	5.6	5.2	6.3	6.4	7.1	6.1	6.5	5.6
Both sexes, 16 to 19 years									
Civilian labor force.....	731	764	765	752	835	804	830	801	786
Participation rate.....	27.3	28.6	28.7	28.0	31.3	30.2	31.1	30.0	29.5
Employed.....	630	599	585	641	692	606	676	619	598
Employment-population ratio.....	23.5	22.5	22.0	23.9	26.0	22.8	25.4	23.2	22.5
Unemployed.....	101	165	180	111	143	197	154	182	188
Unemployment rate.....	13.8	21.6	23.6	14.8	17.1	24.5	18.5	22.7	23.9

See footnotes at end of table.

HOUSEHOLD DATA

Table A-2. Employment status of the civilian population by race, sex, and age — Continued

[Numbers in thousands]

Employment status, race, sex, and age	Not seasonally adjusted			Seasonally adjusted ¹					
	May 2025	Apr. 2026	May 2026	May 2025	Jan. 2026	Feb. 2026	Mar. 2026	Apr. 2026	May 2026
ASIAN									
Civilian noninstitutional population.....	19,291	21,088	20,939	19,291	20,856	21,099	21,176	21,088	20,939
Civilian labor force.....	12,686	13,737	13,665	12,709	13,828	13,892	13,860	13,806	13,698
Participation rate.....	65.8	65.1	65.3	65.9	66.3	65.8	65.4	65.5	65.4
Employed.....	12,250	13,327	13,179	12,246	13,241	13,222	13,348	13,350	13,182
Employment-population ratio.....	63.5	63.2	62.9	63.5	63.5	62.7	63.0	63.3	63.0
Unemployed.....	435	410	486	463	588	670	512	456	516
Unemployment rate.....	3.4	3.0	3.6	3.6	4.2	4.8	3.7	3.3	3.8
Not in labor force.....	6,605	7,351	7,274	6,582	7,027	7,207	7,317	7,282	7,241

¹ The population figures are not adjusted for seasonal variation; therefore, identical numbers appear in the unadjusted and seasonally adjusted columns.

NOTE: Estimates for the above race groups will not sum to totals shown in table A-1 because data are not presented for all races. Updated population controls are introduced annually with the release of January data.

HOUSEHOLD DATA

Table A-3. Employment status of the Hispanic or Latino population by sex and age

[Numbers in thousands]

Employment status, sex, and age	Not seasonally adjusted			Seasonally adjusted ¹					
	May 2025	Apr. 2026	May 2026	May 2025	Jan. 2026	Feb. 2026	Mar. 2026	Apr. 2026	May 2026
HISPANIC OR LATINO ETHNICITY									
Civilian noninstitutional population.....	51,297	52,740	52,799	51,297	52,547	52,614	52,675	52,740	52,799
Civilian labor force.....	34,413	35,380	35,445	34,419	35,403	35,396	35,515	35,407	35,475
Participation rate.....	67.1	67.1	67.1	67.1	67.4	67.3	67.4	67.1	67.2
Employed.....	32,781	33,709	33,809	32,649	33,671	33,551	33,794	33,633	33,697
Employment-population ratio.....	63.9	63.9	64.0	63.6	64.1	63.8	64.2	63.8	63.8
Unemployed.....	1,632	1,671	1,636	1,769	1,732	1,845	1,722	1,774	1,778
Unemployment rate.....	4.7	4.7	4.6	5.1	4.9	5.2	4.8	5.0	5.0
Not in labor force.....	16,884	17,361	17,354	16,878	17,144	17,218	17,160	17,333	17,324
Men, 20 years and over									
Civilian labor force.....	18,435	18,336	18,405	18,421	18,424	18,455	18,330	18,311	18,407
Participation rate.....	79.3	78.3	78.5	79.2	79.0	79.0	78.4	78.2	78.5
Employed.....	17,685	17,577	17,763	17,600	17,700	17,618	17,621	17,542	17,688
Employment-population ratio.....	76.1	75.0	75.7	75.7	75.9	75.4	75.3	74.9	75.4
Unemployed.....	750	759	642	821	724	837	709	769	720
Unemployment rate.....	4.1	4.1	3.5	4.5	3.9	4.5	3.9	4.2	3.9
Women, 20 years and over									
Civilian labor force.....	14,464	15,513	15,526	14,450	15,473	15,423	15,648	15,512	15,514
Participation rate.....	62.2	63.3	63.2	62.1	63.4	63.1	63.9	63.3	63.2
Employed.....	13,781	14,822	14,779	13,721	14,731	14,659	14,857	14,774	14,721
Employment-population ratio.....	59.2	60.5	60.2	59.0	60.3	60.0	60.7	60.3	60.0
Unemployed.....	682	691	748	730	742	764	792	738	793
Unemployment rate.....	4.7	4.5	4.8	5.1	4.8	5.0	5.1	4.8	5.1
Both sexes, 16 to 19 years									
Civilian labor force.....	1,514	1,531	1,514	1,548	1,506	1,518	1,537	1,584	1,554
Participation rate.....	31.7	31.9	31.6	32.4	31.4	31.6	32.0	33.0	32.4
Employed.....	1,314	1,310	1,268	1,329	1,241	1,274	1,315	1,317	1,288
Employment-population ratio.....	27.5	27.3	26.5	27.8	25.8	26.5	27.4	27.4	26.9
Unemployed.....	200	221	246	219	266	245	221	267	265
Unemployment rate.....	13.2	14.4	16.3	14.1	17.6	16.1	14.4	16.9	17.1

¹ The population figures are not adjusted for seasonal variation; therefore, identical numbers appear in the unadjusted and seasonally adjusted columns.

NOTE: People whose ethnicity is identified as Hispanic or Latino may be of any race. Updated population controls are introduced annually with the release of January data.

HOUSEHOLD DATA

Table A-4. Employment status of the civilian population 25 years and over by educational attainment

[Numbers in thousands]

Educational attainment	Not seasonally adjusted			Seasonally adjusted					
	May 2025	Apr. 2026	May 2026	May 2025	Jan. 2026	Feb. 2026	Mar. 2026	Apr. 2026	May 2026
Less than a high school diploma									
Civilian labor force.....	9,310	8,498	8,514	9,054	8,863	8,539	8,578	8,395	8,267
Participation rate.....	47.9	45.5	45.3	46.6	45.7	46.8	46.7	45.0	44.0
Employed.....	8,860	7,965	8,072	8,549	8,392	8,063	8,076	7,860	7,768
Employment-population ratio.....	45.6	42.7	42.9	44.0	43.3	44.2	44.0	42.1	41.3
Unemployed.....	450	534	443	506	471	476	502	534	499
Unemployment rate.....	4.8	6.3	5.2	5.6	5.3	5.6	5.9	6.4	6.0
High school graduates, no college¹									
Civilian labor force.....	36,522	36,904	36,858	36,470	36,667	36,097	36,293	36,804	36,786
Participation rate.....	56.7	56.9	56.9	56.7	56.6	56.5	56.3	56.8	56.8
Employed.....	34,997	35,275	35,317	34,849	34,997	34,351	34,602	35,075	35,150
Employment-population ratio.....	54.4	54.4	54.6	54.1	54.0	53.8	53.7	54.1	54.3
Unemployed.....	1,526	1,629	1,541	1,620	1,670	1,746	1,691	1,730	1,637
Unemployment rate.....	4.2	4.4	4.2	4.4	4.6	4.8	4.7	4.7	4.4
Some college or associate degree									
Civilian labor force.....	35,869	35,490	35,595	36,151	35,889	36,338	35,992	35,395	35,893
Participation rate.....	62.4	61.4	61.4	62.9	61.3	61.9	61.8	61.2	62.0
Employed.....	34,766	34,428	34,380	34,970	34,598	35,057	34,714	34,276	34,593
Employment-population ratio.....	60.5	59.6	59.3	60.8	59.1	59.8	59.6	59.3	59.7
Unemployed.....	1,103	1,062	1,215	1,181	1,292	1,281	1,278	1,119	1,299
Unemployment rate.....	3.1	3.0	3.4	3.3	3.6	3.5	3.6	3.2	3.6
Bachelor's degree and higher²									
Civilian labor force.....	66,678	67,301	67,184	66,749	67,020	67,234	67,265	67,390	67,291
Participation rate.....	72.2	71.7	71.6	72.3	72.8	71.4	71.5	71.8	71.7
Employed.....	65,066	65,567	65,506	65,018	65,025	65,216	65,364	65,509	65,479
Employment-population ratio.....	70.5	69.8	69.8	70.4	70.6	69.3	69.5	69.8	69.7
Unemployed.....	1,612	1,735	1,679	1,731	1,995	2,018	1,900	1,881	1,813
Unemployment rate.....	2.4	2.6	2.5	2.6	3.0	3.0	2.8	2.8	2.7

¹ Includes people with a high school diploma or equivalent.

² Includes people with bachelor's, master's, professional, and doctoral degrees.

NOTE: Detail for the seasonally adjusted data shown in this table will not necessarily add to totals for those 25 years and over because of the independent seasonal adjustment of the various series. Updated population controls are introduced annually with the release of January data.

HOUSEHOLD DATA

Table A-5. Employment status of the civilian population 18 years and over by veteran status, period of service, and sex, not seasonally adjusted

[Numbers in thousands]

Employment status, veteran status, and period of service	Total		Men		Women	
	May 2025	May 2026	May 2025	May 2026	May 2025	May 2026
VETERANS, 18 years and over						
Civilian noninstitutional population.....	17,294	16,961	15,217	14,875	2,077	2,086
Civilian labor force.....	8,256	8,203	7,064	6,999	1,192	1,203
Participation rate.....	47.7	48.4	46.4	47.1	57.4	57.7
Employed.....	7,963	7,942	6,834	6,777	1,129	1,164
Employment-population ratio.....	46.0	46.8	44.9	45.6	54.4	55.8
Unemployed.....	293	261	231	222	63	39
Unemployment rate.....	3.6	3.2	3.3	3.2	5.3	3.3
Not in labor force.....	9,038	8,758	8,153	7,876	885	883
Gulf War-era II veterans						
Civilian noninstitutional population.....	5,669	5,795	4,642	4,766	1,026	1,029
Civilian labor force.....	4,397	4,491	3,653	3,788	744	703
Participation rate.....	77.6	77.5	78.7	79.5	72.5	68.4
Employed.....	4,252	4,308	3,557	3,627	695	681
Employment-population ratio.....	75.0	74.3	76.6	76.1	67.7	66.2
Unemployed.....	144	183	96	161	49	22
Unemployment rate.....	3.3	4.1	2.6	4.2	6.5	3.1
Not in labor force.....	1,272	1,304	990	978	282	325
Gulf War-era I veterans						
Civilian noninstitutional population.....	3,189	3,184	2,715	2,686	475	498
Civilian labor force.....	2,023	2,105	1,742	1,768	281	336
Participation rate.....	63.4	66.1	64.2	65.8	59.2	67.5
Employed.....	1,931	2,064	1,663	1,744	269	319
Employment-population ratio.....	60.6	64.8	61.2	64.9	56.6	64.1
Unemployed.....	92	41	80	24	12	17
Unemployment rate.....	4.5	2.0	4.6	1.4	4.4	5.1
Not in labor force.....	1,166	1,080	973	918	194	162
Vietnam-era and earlier wartime veterans						
Civilian noninstitutional population.....	4,910	4,598	4,723	4,421	187	177
Civilian labor force.....	597	508	574	490	24	18
Participation rate.....	12.2	11.0	12.1	11.1	12.6	10.2
Employed.....	581	494	558	476	24	18
Employment-population ratio.....	11.8	10.7	11.8	10.8	12.6	10.2
Unemployed.....	16	14	16	14	0	0
Unemployment rate.....	2.7	2.8	2.8	2.9	-	-
Not in labor force.....	4,313	4,090	4,149	3,931	163	159
Veterans of other service periods						
Civilian noninstitutional population.....	3,526	3,384	3,137	3,002	389	382
Civilian labor force.....	1,240	1,100	1,096	954	144	146
Participation rate.....	35.2	32.5	34.9	31.8	36.9	38.2
Employed.....	1,198	1,077	1,057	931	142	146
Employment-population ratio.....	34.0	31.8	33.7	31.0	36.5	38.2
Unemployed.....	41	23	39	23	2	0
Unemployment rate.....	3.3	2.1	3.6	2.4	1.2	0.0
Not in labor force.....	2,286	2,284	2,041	2,048	245	236
NONVETERANS, 18 years and over						
Civilian noninstitutional population.....	246,775	249,010	113,430	113,148	133,345	135,862
Civilian labor force.....	159,811	159,476	82,090	80,998	77,721	78,478
Participation rate.....	64.8	64.0	72.4	71.6	58.3	57.8
Employed.....	153,607	153,212	78,830	77,636	74,777	75,576
Employment-population ratio.....	62.2	61.5	69.5	68.6	56.1	55.6
Unemployed.....	6,204	6,264	3,260	3,362	2,944	2,902
Unemployment rate.....	3.9	3.9	4.0	4.2	3.8	3.7
Not in labor force.....	86,964	89,534	31,339	32,150	55,624	57,384

NOTE: Veterans served on active duty in the U.S. Armed Forces and were not on active duty at the time of the survey. Nonveterans never served on active duty in the U.S. Armed Forces. Veterans could have served anywhere in the world during these periods of service: Gulf War era II (September 2001-present), Gulf War era I (August 1990-August 2001), Vietnam era (August 1964-April 1975), Korean War (July 1950-January 1955), World War II (December 1941-December 1946), and other service periods (all other time periods). Veterans who served in more than one wartime period are classified only in the most recent one. Veterans who served during one of the selected wartime periods and another period are classified only in the wartime period. Dash indicates no data or data that do not meet publication criteria (values not shown where base is less than 75,000).

HOUSEHOLD DATA

Table A-6. Employment status of the civilian population by sex, age, and disability status, not seasonally adjusted

[Numbers in thousands]

Employment status, sex, and age	People with a disability		People with no disability	
	May 2025	May 2026	May 2025	May 2026
TOTAL, 16 years and over				
Civilian noninstitutional population.....	35,517	36,768	237,868	238,286
Civilian labor force.....	8,719	8,792	161,497	161,009
Participation rate.....	24.5	23.9	67.9	67.6
Employed.....	8,059	7,992	155,342	154,905
Employment-population ratio.....	22.7	21.7	65.3	65.0
Unemployed.....	660	800	6,155	6,104
Unemployment rate.....	7.6	9.1	3.8	3.8
Not in labor force.....	26,798	27,977	76,371	77,277
Men, 16 to 64 years				
Civilian labor force.....	3,605	3,701	80,219	78,997
Participation rate.....	42.7	43.4	82.8	83.2
Employed.....	3,292	3,330	77,018	75,805
Employment-population ratio.....	39.0	39.0	79.5	79.8
Unemployed.....	313	371	3,201	3,192
Unemployment rate.....	8.7	10.0	4.0	4.0
Not in labor force.....	4,843	4,828	16,619	15,939
Women, 16 to 64 years				
Civilian labor force.....	3,606	3,500	71,151	71,679
Participation rate.....	40.3	40.6	72.9	73.0
Employed.....	3,329	3,154	68,452	69,027
Employment-population ratio.....	37.2	36.6	70.1	70.3
Unemployed.....	277	346	2,699	2,652
Unemployment rate.....	7.7	9.9	3.8	3.7
Not in labor force.....	5,352	5,112	26,509	26,570
Both sexes, 65 years and over				
Civilian labor force.....	1,508	1,591	10,128	10,333
Participation rate.....	8.3	8.1	23.4	22.9
Employed.....	1,438	1,508	9,873	10,074
Employment-population ratio.....	7.9	7.7	22.8	22.3
Unemployed.....	70	83	255	259
Unemployment rate.....	4.7	5.2	2.5	2.5
Not in labor force.....	16,604	18,037	33,243	34,767

NOTE: A person with a disability has at least one of the following conditions: is deaf or has serious difficulty hearing; is blind or has serious difficulty seeing even when wearing glasses; has serious difficulty concentrating, remembering, or making decisions because of a physical, mental, or emotional condition; has serious difficulty walking or climbing stairs; has difficulty dressing or bathing; or has difficulty doing errands alone such as visiting a doctor's office or shopping because of a physical, mental, or emotional condition. Updated population controls are introduced annually with the release of January data.

HOUSEHOLD DATA

Table A-7. Employment status of the civilian population by nativity and sex, not seasonally adjusted

[Numbers in thousands]

Employment status and nativity	Total		Men		Women	
	May 2025	May 2026	May 2025	May 2026	May 2025	May 2026
Foreign born, 16 years and over						
Civilian noninstitutional population.....	49,593	49,061	24,122	23,004	25,472	26,057
Civilian labor force.....	32,706	32,612	18,377	17,672	14,329	14,940
Participation rate.....	65.9	66.5	76.2	76.8	56.3	57.3
Employed.....	31,579	31,472	17,833	17,130	13,746	14,341
Employment-population ratio.....	63.7	64.1	73.9	74.5	54.0	55.0
Unemployed.....	1,127	1,140	544	542	583	598
Unemployment rate.....	3.4	3.5	3.0	3.1	4.1	4.0
Not in labor force.....	16,887	16,449	5,745	5,332	11,142	11,118
Native born, 16 years and over						
Civilian noninstitutional population.....	223,791	225,993	109,230	109,710	114,562	116,283
Civilian labor force.....	137,510	137,189	71,872	71,346	65,637	65,843
Participation rate.....	61.4	60.7	65.8	65.0	57.3	56.6
Employed.....	131,822	131,426	68,732	68,115	63,090	63,311
Employment-population ratio.....	58.9	58.2	62.9	62.1	55.1	54.4
Unemployed.....	5,688	5,763	3,140	3,231	2,548	2,532
Unemployment rate.....	4.1	4.2	4.4	4.5	3.9	3.8
Not in labor force.....	86,282	88,804	37,357	38,364	48,924	50,440

NOTE: The foreign born are those residing in the United States who were not U.S. citizens at birth. That is, they were born outside the United States or one of its outlying areas such as Puerto Rico or Guam, to parents neither of whom was a U.S. citizen. The native born are people who were born in the United States or one of its outlying areas such as Puerto Rico or Guam or who were born abroad of at least one parent who was a U.S. citizen. Updated population controls are introduced annually with the release of January data.

HOUSEHOLD DATA

Table A-8. Employed people by class of worker and part-time status

[In thousands]

Category	Not seasonally adjusted			Seasonally adjusted					
	May 2025	Apr. 2026	May 2026	May 2025	Jan. 2026	Feb. 2026	Mar. 2026	Apr. 2026	May 2026
CLASS OF WORKER									
Agriculture and related industries.....	2,089	2,227	2,278	2,073	2,152	2,257	2,256	2,288	2,261
Wage and salary workers ¹	1,403	1,527	1,664	1,428	1,400	1,500	1,496	1,562	1,648
Self-employed workers, unincorporated.....	646	670	580	631	756	757	721	678	582
Unpaid family workers.....	40	30	34	-	-	-	-	-	-
Nonagricultural industries.....	161,312	160,553	160,619	161,214	160,883	160,706	160,550	160,256	160,589
Wage and salary workers ¹	151,760	151,633	151,502	151,804	151,874	151,786	151,853	151,331	151,624
Government.....	21,879	21,577	21,264	21,836	21,591	21,739	21,325	21,393	21,270
Private industries.....	129,881	130,055	130,238	129,923	130,384	130,046	130,542	129,950	130,318
Private households.....	556	566	576	-	-	-	-	-	-
Other industries.....	129,325	129,489	129,662	129,339	129,710	129,388	129,805	129,341	129,721
Self-employed workers, unincorporated.....	9,508	8,877	9,066	9,376	9,056	8,841	8,737	8,904	8,943
Unpaid family workers.....	44	43	52	-	-	-	-	-	-
PEOPLE AT WORK PART TIME²									
 All industries									
Part time for economic reasons ³	4,425	4,749	4,602	4,624	4,873	4,396	4,497	4,942	4,805
Slack work or business conditions.....	2,857	3,152	3,113	3,009	3,181	2,838	3,107	3,289	3,263
Could only find part-time work.....	1,369	1,266	1,190	1,376	1,379	1,251	1,126	1,267	1,208
Part time for noneconomic reasons ⁴	22,710	23,382	22,969	22,600	22,899	22,728	22,767	22,706	22,853
 Nonagricultural industries									
Part time for economic reasons ³	4,367	4,681	4,564	4,549	4,836	4,380	4,476	4,873	4,750
Slack work or business conditions.....	2,806	3,135	3,096	2,943	3,167	2,846	3,096	3,274	3,235
Could only find part-time work.....	1,362	1,259	1,190	1,366	1,373	1,250	1,124	1,258	1,205
Part time for noneconomic reasons ⁴	22,372	23,019	22,572	22,248	22,520	22,357	22,393	22,322	22,445

¹ Includes self-employed workers whose businesses are incorporated.

² Refers to those who worked 1 to 34 hours during the survey reference week and excludes employed people who were absent from their jobs for the entire week.

³ Refers to those who worked 1 to 34 hours during the reference week for an economic reason such as slack work or unfavorable business conditions, inability to find full-time work, or seasonal declines in demand.

⁴ Refers to people who usually work part time for noneconomic reasons such as childcare problems, family or personal obligations, school or training, retirement or Social Security limits on earnings, and other reasons. This excludes people who usually work full time but worked only 1 to 34 hours during the reference week for reasons such as vacations, holidays, illness, and bad weather.

- Data not available.

NOTE: Detail for the seasonally adjusted data shown in this table will not necessarily add to totals because of the independent seasonal adjustment of the various series. Updated population controls are introduced annually with the release of January data.

HOUSEHOLD DATA

Table A-9. Selected employment indicators

[Numbers in thousands]

Characteristic	Not seasonally adjusted			Seasonally adjusted					
	May 2025	Apr. 2026	May 2026	May 2025	Jan. 2026	Feb. 2026	Mar. 2026	Apr. 2026	May 2026
AGE AND SEX									
Total, 16 years and over.....	163,401	162,781	162,897	163,244	163,097	162,912	162,848	162,622	162,771
16 to 19 years.....	5,492	5,193	5,271	5,569	5,390	5,357	5,425	5,397	5,350
16 to 17 years.....	1,831	1,771	1,744	1,936	1,926	1,963	2,000	1,929	1,850
18 to 19 years.....	3,661	3,421	3,528	3,641	3,465	3,418	3,459	3,496	3,510
20 years and over.....	157,909	157,588	157,626	157,675	157,708	157,555	157,423	157,225	157,421
20 to 24 years.....	14,220	14,353	14,351	14,324	14,740	14,709	14,633	14,429	14,463
25 years and over.....	143,689	143,235	143,275	143,357	142,913	142,777	142,806	142,743	142,936
25 to 54 years.....	105,642	105,277	105,322	105,411	105,063	104,909	105,007	104,932	105,089
25 to 34 years.....	36,496	36,549	36,658	36,395	36,442	36,331	36,362	36,427	36,549
35 to 44 years.....	36,924	36,802	36,806	36,858	36,635	36,556	36,529	36,646	36,737
45 to 54 years.....	32,221	31,925	31,857	32,158	31,986	32,022	32,116	31,859	31,802
55 years and over.....	38,047	37,959	37,953	37,946	37,850	37,868	37,799	37,810	37,847
Men, 16 years and over.....	86,565	84,981	85,245	86,473	85,348	85,210	85,111	85,007	85,172
16 to 19 years.....	2,729	2,562	2,598	2,768	2,566	2,619	2,549	2,654	2,633
16 to 17 years.....	901	796	831	948	920	904	860	842	875
18 to 19 years.....	1,828	1,765	1,767	1,829	1,650	1,740	1,707	1,829	1,768
20 years and over.....	83,836	82,420	82,646	83,705	82,783	82,591	82,562	82,353	82,539
20 to 24 years.....	7,305	7,344	7,519	7,313	7,489	7,445	7,632	7,382	7,522
25 years and over.....	76,531	75,076	75,127	76,358	75,325	75,150	74,970	74,972	74,984
25 to 54 years.....	56,163	55,357	55,449	56,040	55,270	55,230	55,104	55,253	55,326
25 to 34 years.....	19,425	19,483	19,475	19,380	19,398	19,291	19,171	19,431	19,423
35 to 44 years.....	19,762	19,354	19,364	19,728	19,310	19,300	19,331	19,304	19,333
45 to 54 years.....	16,976	16,520	16,611	16,932	16,562	16,639	16,603	16,517	16,569
55 years and over.....	20,368	19,718	19,677	20,318	20,055	19,920	19,865	19,719	19,657
Women, 16 years and over.....	76,836	77,799	77,652	76,771	77,749	77,702	77,737	77,615	77,599
16 to 19 years.....	2,763	2,631	2,673	2,800	2,824	2,737	2,876	2,743	2,717
16 to 17 years.....	930	975	912	988	1,007	1,059	1,140	1,088	975
18 to 19 years.....	1,833	1,656	1,761	1,812	1,815	1,677	1,751	1,667	1,742
20 years and over.....	74,073	75,168	74,979	73,970	74,925	74,965	74,861	74,872	74,882
20 to 24 years.....	6,915	7,009	6,831	7,011	7,252	7,264	7,002	7,047	6,941
25 years and over.....	67,158	68,160	68,148	66,999	67,588	67,628	67,836	67,771	67,952
25 to 54 years.....	49,479	49,919	49,872	49,371	49,793	49,679	49,903	49,680	49,762
25 to 34 years.....	17,071	17,066	17,184	17,016	17,044	17,040	17,191	16,996	17,126
35 to 44 years.....	17,163	17,449	17,443	17,129	17,325	17,256	17,198	17,342	17,404
45 to 54 years.....	15,245	15,404	15,246	15,226	15,425	15,383	15,513	15,342	15,233
55 years and over.....	17,679	18,240	18,276	17,628	17,795	17,948	17,934	18,091	18,190
MARITAL STATUS									
Married men, spouse present ¹	46,536	45,118	45,097	46,443	45,388	45,199	45,327	45,078	45,034
Married women, spouse present ¹	37,179	38,086	37,827	37,156	37,119	37,413	37,963	37,901	37,779
Women who maintain families ²	10,009	9,996	9,939	-	-	-	-	-	-
FULL- OR PART-TIME STATUS									
Full-time workers ³	134,927	133,830	134,282	134,773	134,441	134,341	134,676	134,252	134,173
Part-time workers ⁴	28,474	28,951	28,615	28,547	28,727	28,478	28,290	28,413	28,679
MULTIPLE JOBHOLDERS									
Total multiple jobholders.....	8,501	8,399	8,361	8,571	8,723	8,371	8,357	8,434	8,428
Percent of total employed.....	5.2	5.2	5.1	5.3	5.3	5.1	5.1	5.2	5.2
SELF-EMPLOYMENT									
Self-employed workers, incorporated.....	6,695	6,726	6,881	-	-	-	-	-	-
Self-employed workers, unincorporated.....	10,154	9,548	9,646	10,008	9,812	9,597	9,458	9,582	9,525

¹ Beginning with data for January 2020, refers to people in both opposite-sex and same-sex married couples. Prior to January 2020, referred to people in opposite-sex married couples only.

² Beginning with data for January 2020, refers to female householders residing with one or more family members, but not a spouse of either sex. Prior to January 2020, referred to female householders residing with one or more family members, but not an opposite-sex spouse.

³ Employed full-time workers are people who usually work 35 hours or more per week.

⁴ Employed part-time workers are people who usually work less than 35 hours per week.

- Data not available.

NOTE: Detail for the seasonally adjusted data shown in this table will not necessarily add to totals because of the independent seasonal adjustment of the various series. Updated population controls are introduced annually with the release of January data.

HOUSEHOLD DATA

Table A-10. Selected unemployment indicators, seasonally adjusted

Characteristic	Number of unemployed people (in thousands)			Unemployment rates					
	May 2025	Apr. 2026	May 2026	May 2025	Jan. 2026	Feb. 2026	Mar. 2026	Apr. 2026	May 2026
AGE AND SEX									
Total, 16 years and over.....	7,248	7,373	7,307	4.3	4.3	4.4	4.3	4.3	4.3
16 to 19 years.....	864	910	919	13.4	13.6	14.9	13.7	14.4	14.7
16 to 17 years.....	330	384	391	14.6	16.3	16.3	14.2	16.6	17.4
18 to 19 years.....	537	539	537	12.8	12.2	13.8	13.4	13.4	13.3
20 years and over.....	6,384	6,463	6,388	3.9	4.0	4.0	3.9	3.9	3.9
20 to 24 years.....	1,285	1,181	1,129	8.2	7.0	7.4	6.4	7.6	7.2
25 years and over.....	5,060	5,274	5,252	3.4	3.6	3.7	3.6	3.6	3.5
25 to 54 years.....	3,890	4,086	4,112	3.6	3.8	3.9	3.7	3.7	3.8
25 to 34 years.....	1,565	1,829	1,788	4.1	4.9	4.8	4.8	4.8	4.7
35 to 44 years.....	1,252	1,183	1,325	3.3	3.3	3.3	3.2	3.1	3.5
45 to 54 years.....	1,072	1,074	999	3.2	3.0	3.4	3.0	3.3	3.0
55 years and over.....	1,192	1,179	1,157	3.0	3.2	3.3	3.3	3.0	3.0
Men, 16 years and over.....	3,915	3,929	3,966	4.3	4.3	4.4	4.2	4.4	4.4
16 to 19 years.....	520	491	523	15.8	17.4	15.4	16.4	15.6	16.6
16 to 17 years.....	202	215	198	17.6	20.6	17.1	17.1	20.3	18.5
18 to 19 years.....	310	273	318	14.5	15.5	14.3	16.0	13.0	15.3
20 years and over.....	3,395	3,438	3,443	3.9	3.8	4.0	3.8	4.0	4.0
20 to 24 years.....	707	656	672	8.8	7.1	8.3	6.7	8.2	8.2
25 years and over.....	2,654	2,794	2,769	3.4	3.5	3.6	3.4	3.6	3.6
25 to 54 years.....	2,019	2,133	2,096	3.5	3.6	3.6	3.5	3.7	3.7
25 to 34 years.....	854	980	932	4.2	4.6	4.8	4.7	4.8	4.6
35 to 44 years.....	614	678	695	3.0	3.4	3.1	3.0	3.4	3.5
45 to 54 years.....	551	475	469	3.2	2.7	2.9	2.7	2.8	2.8
55 years and over.....	635	661	672	3.0	3.4	3.5	3.2	3.2	3.3
Women, 16 years and over.....	3,333	3,444	3,341	4.2	4.3	4.5	4.3	4.2	4.1
16 to 19 years.....	344	418	396	10.9	10.0	14.4	11.1	13.2	12.7
16 to 17 years.....	128	170	193	11.5	11.8	15.6	11.9	13.5	16.5
18 to 19 years.....	226	266	219	11.1	9.0	13.2	10.8	13.8	11.2
20 years and over.....	2,989	3,026	2,945	3.9	4.1	4.1	4.0	3.9	3.8
20 to 24 years.....	578	525	456	7.6	7.0	6.5	6.2	6.9	6.2
25 years and over.....	2,406	2,480	2,484	3.5	3.8	3.9	3.8	3.5	3.5
25 to 54 years.....	1,870	1,954	2,016	3.6	4.0	4.1	3.9	3.8	3.9
25 to 34 years.....	711	849	856	4.0	5.3	4.7	4.9	4.8	4.8
35 to 44 years.....	638	505	630	3.6	3.1	3.6	3.4	2.8	3.5
45 to 54 years.....	521	599	530	3.3	3.4	4.0	3.3	3.8	3.4
55 years and over.....	548	514	475	3.0	3.1	3.1	3.4	2.8	2.5
MARITAL STATUS									
Married men, spouse present ¹	1,083	933	1,041	2.3	2.2	2.2	2.2	2.0	2.3
Married women, spouse present ¹	982	975	966	2.6	2.9	2.9	3.0	2.5	2.5
Women who maintain families ²	629	443	493	5.9	5.5	5.5	5.0	4.2	4.7
FULL- OR PART-TIME STATUS									
Full-time workers ³	5,898	5,996	5,897	4.2	4.2	4.3	4.2	4.3	4.2
Part-time workers ⁴	1,320	1,378	1,418	4.4	4.8	5.1	4.6	4.6	4.7

¹ Beginning with data for January 2020, refers to people in both opposite-sex and same-sex married couples. Prior to January 2020, referred to people in opposite-sex married couples only.

² Data are not seasonally adjusted. Beginning with data for January 2020, refers to female householders residing with one or more family members, but not a spouse of either sex. Prior to January 2020, referred to female householders residing with one or more family members, but not an opposite-sex spouse.

³ Full-time workers are unemployed people who have expressed a desire to work full time (35 hours or more per week) or are on layoff from full-time jobs.

⁴ Part-time workers are unemployed people who have expressed a desire to work part time (less than 35 hours per week) or are on layoff from part-time jobs.

NOTE: Detail for the seasonally adjusted data shown in this table will not necessarily add to totals because of the independent seasonal adjustment of the various series. Updated population controls are introduced annually with the release of January data.

HOUSEHOLD DATA

Table A-11. Unemployed people by reason for unemployment

[Numbers in thousands]

Reason	Not seasonally adjusted			Seasonally adjusted					
	May 2025	Apr. 2026	May 2026	May 2025	Jan. 2026	Feb. 2026	Mar. 2026	Apr. 2026	May 2026
NUMBER OF UNEMPLOYED									
Job losers and people who completed temporary jobs.....	3,094	3,281	2,997	3,459	3,495	3,620	3,403	3,511	3,385
On temporary layoff.....	602	750	478	879	839	925	877	917	778
Not on temporary layoff.....	2,492	2,531	2,519	2,580	2,657	2,694	2,526	2,595	2,606
Permanent job losers.....	1,890	1,900	1,902	1,913	2,008	2,037	1,881	1,909	1,927
People who completed temporary jobs.	602	631	616	666	649	658	645	686	680
Job leavers.....	652	800	847	706	1,038	867	898	844	916
Reentrants.....	2,355	2,019	2,259	2,291	2,168	2,320	2,254	2,282	2,209
New entrants.....	713	668	801	734	796	805	714	805	818
PERCENT DISTRIBUTION									
Job losers and people who completed temporary jobs.....	45.4	48.5	43.4	48.1	46.6	47.6	46.8	47.2	46.2
On temporary layoff.....	8.8	11.1	6.9	12.2	11.2	12.2	12.1	12.3	10.6
Not on temporary layoff.....	36.6	37.4	36.5	35.9	35.4	35.4	34.7	34.9	35.6
Job leavers.....	9.6	11.8	12.3	9.8	13.8	11.4	12.4	11.3	12.5
Reentrants.....	34.6	29.8	32.7	31.9	28.9	30.5	31.0	30.7	30.2
New entrants.....	10.5	9.9	11.6	10.2	10.6	10.6	9.8	10.8	11.2
UNEMPLOYED AS A PERCENT OF THE CIVILIAN LABOR FORCE									
Job losers and people who completed temporary jobs.....	1.8	1.9	1.8	2.0	2.1	2.1	2.0	2.1	2.0
Job leavers.....	0.4	0.5	0.5	0.4	0.6	0.5	0.5	0.5	0.5
Reentrants.....	1.4	1.2	1.3	1.3	1.3	1.4	1.3	1.3	1.3
New entrants.....	0.4	0.4	0.5	0.4	0.5	0.5	0.4	0.5	0.5

NOTE: Detail for the seasonally adjusted data shown in this table will not necessarily add to total unemployed in table A-1 because of the independent seasonal adjustment of the various series. Updated population controls are introduced annually with the release of January data.

HOUSEHOLD DATA

Table A-12. Unemployed people by duration of unemployment

[Numbers in thousands]

Duration	Not seasonally adjusted			Seasonally adjusted					
	May 2025	Apr. 2026	May 2026	May 2025	Jan. 2026	Feb. 2026	Mar. 2026	Apr. 2026	May 2026
NUMBER OF UNEMPLOYED									
Less than 5 weeks.....	2,431	2,118	2,179	2,456	2,166	2,319	2,138	2,496	2,210
5 to 14 weeks.....	1,821	1,561	1,603	2,203	2,151	2,078	1,998	1,859	1,946
15 weeks and over.....	2,563	3,088	3,121	2,506	3,015	3,105	3,033	2,890	3,065
15 to 26 weeks.....	1,122	1,234	1,157	1,042	1,202	1,206	1,212	1,057	1,077
27 weeks and over.....	1,441	1,854	1,964	1,464	1,813	1,899	1,821	1,833	1,988
Average (mean) duration, in weeks.....	22.6	26.2	26.8	21.9	23.7	25.7	25.3	24.4	26.0
Median duration, in weeks.....	9.7	12.7	11.8	9.5	11.0	11.1	11.5	11.0	11.6
PERCENT DISTRIBUTION									
Less than 5 weeks.....	35.7	31.3	31.6	34.3	29.5	30.9	29.8	34.4	30.6
5 to 14 weeks.....	26.7	23.1	23.2	30.7	29.3	27.7	27.9	25.7	27.0
15 weeks and over.....	37.6	45.6	45.2	35.0	41.1	41.4	42.3	39.9	42.4
15 to 26 weeks.....	16.5	18.2	16.8	14.5	16.4	16.1	16.9	14.6	14.9
27 weeks and over.....	21.1	27.4	28.4	20.4	24.7	25.3	25.4	25.3	27.5

NOTE: Detail for the seasonally adjusted data shown in this table will not necessarily add to total unemployed in table A-1 because of the independent seasonal adjustment of the various series. Updated population controls are introduced annually with the release of January data.

HOUSEHOLD DATA

Table A-13. Employed and unemployed people by occupation, not seasonally adjusted

[Numbers in thousands]

Occupation	Employed		Unemployed		Unemployment rates	
	May 2025	May 2026	May 2025	May 2026	May 2025	May 2026
Total, 16 years and over ¹	163,401	162,897	6,815	6,904	4.0	4.1
Management, professional, and related occupations.....	70,912	71,111	1,719	1,810	2.4	2.5
Management, business, and financial operations occupations.....	30,819	30,386	819	725	2.6	2.3
Professional and related occupations.....	40,093	40,725	900	1,085	2.2	2.6
Service occupations.....	27,682	27,243	1,407	1,420	4.8	5.0
Sales and office occupations.....	30,267	30,640	1,272	1,210	4.0	3.8
Sales and related occupations.....	14,152	14,306	662	554	4.5	3.7
Office and administrative support occupations.....	16,115	16,335	611	656	3.7	3.9
Natural resources, construction, and maintenance occupations.....	14,851	13,871	587	608	3.8	4.2
Farming, fishing, and forestry occupations.....	1,010	1,058	72	74	6.6	6.5
Construction and extraction occupations.....	8,833	7,939	342	391	3.7	4.7
Installation, maintenance, and repair occupations.....	5,008	4,874	173	143	3.3	2.9
Production, transportation, and material moving occupations.....	19,689	20,032	1,113	1,017	5.4	4.8
Production occupations.....	7,947	7,912	385	299	4.6	3.6
Transportation and material moving occupations.....	11,742	12,120	728	718	5.8	5.6

¹ People with no previous work experience and people whose last job was in the U.S. Armed Forces are included in the unemployed total.

NOTE: Updated population controls are introduced annually with the release of January data.

HOUSEHOLD DATA

Table A-14. Unemployed people by industry and class of worker, not seasonally adjusted

Industry and class of worker	Number of unemployed people (in thousands)		Unemployment rates	
	May 2025	May 2026	May 2025	May 2026
Total, 16 years and over ¹	6,815	6,904	4.0	4.1
Nonagricultural private wage and salary workers.....	5,228	5,176	3.9	3.8
Mining, quarrying, and oil and gas extraction.....	23	11	4.2	1.8
Construction.....	373	426	3.5	4.1
Manufacturing.....	547	458	3.6	3.1
Durable goods.....	356	232	3.6	2.3
Nondurable goods.....	191	225	3.7	4.6
Wholesale and retail trade.....	1,005	820	5.1	4.2
Transportation and utilities.....	322	285	3.9	3.4
Information.....	143	130	5.5	4.9
Financial activities.....	281	239	2.7	2.2
Professional and business services.....	673	738	3.4	3.7
Education and health services.....	750	957	2.7	3.5
Leisure and hospitality.....	891	798	6.4	5.8
Other services.....	221	315	3.2	4.5
Agriculture and related private wage and salary workers.....	97	85	6.6	5.0
Government workers.....	455	530	2.0	2.4
Self-employed workers, unincorporated, and unpaid family workers.....	322	311	3.1	3.1

¹ People with no previous work experience and people whose last job was in the U.S. Armed Forces are included in the unemployed total.

NOTE: Updated population controls are introduced annually with the release of January data. Effective with January 2025 data, industries reflect the introduction of the 2022 Census industry classification system, derived from the 2022 North American Industry Classification System (NAICS). Data for 2025 are not strictly comparable with earlier years.

HOUSEHOLD DATA

Table A-15. Alternative measures of labor underutilization

[Percent]

Measure	Not seasonally adjusted			Seasonally adjusted					
	May 2025	Apr. 2026	May 2026	May 2025	Jan. 2026	Feb. 2026	Mar. 2026	Apr. 2026	May 2026
U-1 People unemployed 15 weeks or longer, as a percent of the civilian labor force.....	1.5	1.8	1.8	1.5	1.8	1.8	1.8	1.7	1.8
U-2 Job losers and people who completed temporary jobs, as a percent of the civilian labor force.....	1.8	1.9	1.8	2.0	2.1	2.1	2.0	2.1	2.0
U-3 Total unemployed, as a percent of the civilian labor force (official unemployment rate).....	4.0	4.0	4.1	4.3	4.3	4.4	4.3	4.3	4.3
U-4 Total unemployed plus discouraged workers, as a percent of the civilian labor force plus discouraged workers.....	4.2	4.3	4.3	4.5	4.6	4.6	4.5	4.6	4.6
U-5 Total unemployed, plus discouraged workers, plus all other people marginally attached to the labor force, as a percent of the civilian labor force plus all people marginally attached to the labor force.....	4.8	5.0	5.0	5.1	5.2	5.3	5.3	5.3	5.3
U-6 Total unemployed, plus all people marginally attached to the labor force, plus total employed part time for economic reasons, as a percent of the civilian labor force plus all people marginally attached to the labor force.....	7.4	7.7	7.7	7.8	8.1	7.9	8.0	8.2	8.1

NOTE: People marginally attached to the labor force are those who currently are neither working nor looking for work but indicate that they want and are available for a job and have looked for work sometime in the past 12 months. Discouraged workers, a subset of the marginally attached, have given a job-market related reason for not currently looking for work. People employed part time for economic reasons are those who want and are available for full-time work but have had to settle for a part-time schedule. Updated population controls are introduced annually with the release of January data.

HOUSEHOLD DATA

Table A-16. People not in the labor force and multiple jobholders by sex, not seasonally adjusted

[Numbers in thousands]

Category	Total		Men		Women	
	May 2025	May 2026	May 2025	May 2026	May 2025	May 2026
NOT IN THE LABOR FORCE						
Total not in the labor force.....	103,169	105,253	43,102	43,696	60,067	61,558
People who currently want a job.....	6,567	6,756	3,148	3,268	3,419	3,488
Marginally attached to the labor force ¹	1,500	1,637	782	817	718	820
Discouraged workers ²	352	449	197	241	155	208
Other people marginally attached to the labor force ³	1,148	1,188	585	576	563	612
MULTIPLE JOBHOLDERS						
Total multiple jobholders ⁴	8,501	8,361	4,152	3,915	4,350	4,446
Percent of total employed.....	5.2	5.1	4.8	4.6	5.7	5.7
Primary job full time, secondary job part time.....	4,678	4,776	2,500	2,441	2,177	2,335
Primary and secondary jobs both part time.....	2,344	2,142	842	696	1,503	1,446
Primary and secondary jobs both full time.....	404	368	271	202	133	165
Hours vary on primary or secondary job.....	980	1,044	499	565	481	479

¹ Data refer to people who want a job, have searched for work during the prior 12 months, and were available to take a job during the reference week, but had not looked for work in the past 4 weeks.

² Includes those who did not actively look for work in the prior 4 weeks for reasons such as thinks no work available, could not find work, lacks schooling or training, employer thinks too young or old, and other types of discrimination.

³ Includes those who did not actively look for work in the prior 4 weeks for such reasons as school or family responsibilities, ill health, and transportation problems, as well as a number for whom reason for nonparticipation was not determined.

⁴ Includes a small number of people who work part time on their primary job and full time on their secondary job(s), not shown separately.

NOTE: Updated population controls are introduced annually with the release of January data.

ESTABLISHMENT DATA

Table B-1. Employees on nonfarm payrolls by industry sector and selected industry detail

[In thousands]

Industry	Not seasonally adjusted				Seasonally adjusted				Change from: Apr.2026 - May2026 ^P
	May 2025	Mar. 2026	Apr. 2026 ^P	May 2026 ^P	May 2025	Mar. 2026	Apr. 2026 ^P	May 2026 ^P	
Total nonfarm.....	159,032	157,751	158,726	159,467	158,498	158,650	158,829	159,001	172
Total private.....	135,216	134,107	135,076	135,838	134,937	135,317	135,494	135,614	120
Goods-producing.....	21,586	21,236	21,403	21,591	21,538	21,513	21,527	21,555	28
Mining and logging.....	618	598	605	612	618	604	609	613	4
Logging.....	39.9	37.3	36.6	37.3	41.4	37.8	39.2	38.7	-0.5
Mining, quarrying, and oil and gas extraction..	577.7	560.6	568.6	575.1	576.9	566.1	569.9	574.7	4.8
Oil and gas extraction.....	118.3	115.6	114.1	115.1	118.6	115.9	115.5	115.6	0.1
Mining (except oil and gas).....	191.2	183.5	188.8	192.5	189.3	187.3	188.8	190.4	1.6
Coal mining.....	40.3	38.2	39.0	38.8	40.0	38.4	38.7	38.7	0.0
Metal ore mining.....	44.9	45.6	45.9	46.1	44.9	45.7	46.2	46.2	0.0
Nonmetallic mineral mining and quarrying.....	106.0	99.7	103.9	107.6	104.4	103.2	103.9	105.5	1.6
Support activities for mining.....	268.2	261.5	265.7	267.5	269.0	262.9	265.6	268.7	3.1
Construction.....	8,326	8,086	8,248	8,384	8,269	8,311	8,320	8,337	17
Construction of buildings.....	1,862.8	1,833.6	1,851.9	1,871.6	1,858.9	1,864.9	1,868.9	1,868.9	0.0
Residential building construction.....	935.9	910.9	917.2	927.0	932.9	927.0	926.4	924.7	-1.7
Nonresidential building construction.....	926.9	922.7	934.7	944.6	926.0	937.9	942.5	944.2	1.7
Heavy and civil engineering construction.....	1,209.0	1,145.4	1,200.8	1,233.5	1,180.6	1,202.0	1,203.9	1,206.5	2.6
Specialty trade contractors.....	5,254.4	5,107.3	5,195.6	5,279.1	5,229.1	5,244.3	5,247.4	5,261.4	14.0
Residential specialty trade contractors.....	2,400.6	2,299.9	2,337.2	2,370.4	2,386.7	2,362.4	2,359.0	2,361.6	2.6
Nonresidential specialty trade contractors...	2,853.8	2,807.4	2,858.4	2,908.7	2,842.4	2,881.9	2,888.4	2,899.8	11.4
Manufacturing.....	12,642	12,552	12,550	12,595	12,651	12,598	12,598	12,605	7
Durable goods.....	7,842	7,802	7,803	7,843	7,845	7,824	7,826	7,843	17
Wood product manufacturing.....	408.4	391.3	391.7	391.8	407.9	392.5	392.1	390.2	-1.9
Nonmetallic mineral product manufacturing.....	418.8	413.8	418.1	422.9	417.1	419.8	420.0	420.8	0.8
Primary metal manufacturing.....	365.2	363.5	364.7	366.7	364.7	363.9	365.6	366.7	1.1
Fabricated metal product manufacturing...	1,435.4	1,441.3	1,442.8	1,451.4	1,434.8	1,443.6	1,445.6	1,452.3	6.7
Machinery manufacturing.....	1,090.7	1,084.9	1,079.8	1,084.8	1,090.8	1,085.8	1,084.2	1,085.3	1.1
Computer and electronic product manufacturing.....	998.4	985.7	988.8	992.0	1,000.7	989.5	992.4	993.3	0.9
Computer and peripheral equipment manufacturing.....	99.2	99.1	99.9	100.4	99.8	99.8	100.3	100.7	0.4
Communications equipment manufacturing.....	79.4	80.6	81.9	82.4	79.2	80.7	82.2	82.3	0.1
Semiconductor and other electronic component manufacturing.....	382.4	367.4	367.6	368.5	382.8	368.7	369.2	368.5	-0.7
Navigational, measuring, electromedical, and control instruments manufacturing.....	408.9	411.5	413.0	414.4	410.3	412.7	413.8	415.0	1.2
Manufacturing and reproducing magnetic and optical media and audio and video equipment manufacturing.....	28.5	27.1	26.4	26.3	28.6	27.6	26.9	26.8	-0.1
Electrical equipment, appliance, and component manufacturing.....	428.0	435.4	436.5	437.0	428.9	435.4	436.9	438.2	1.3
Transportation equipment manufacturing ¹ ...	1,743.3	1,746.0	1,740.7	1,749.8	1,747.0	1,750.6	1,745.9	1,750.8	4.9
Motor vehicles and parts ²	974.8	958.9	953.5	960.5	974.3	959.1	954.5	958.1	3.6
Furniture and related product manufacturing.....	339.0	333.0	331.3	333.1	338.9	333.8	332.9	331.9	-1.0
Miscellaneous manufacturing.....	615.1	607.5	608.6	613.1	613.7	608.9	610.7	613.7	3.0
Nondurable goods.....	4,800	4,750	4,747	4,752	4,806	4,774	4,772	4,762	-10
Food manufacturing.....	1,774.9	1,766.4	1,762.8	1,762.9	1,785.6	1,778.3	1,779.9	1,776.3	-3.6
Textile mills.....	82.0	79.0	78.4	78.3	82.0	79.2	78.9	78.4	-0.5
Textile product mills.....	93.8	94.2	93.6	93.2	93.7	93.9	93.8	93.1	-0.7
Apparel manufacturing.....	80.1	73.6	71.9	72.5	79.6	74.4	73.2	72.8	-0.4
Paper manufacturing.....	353.3	357.9	357.3	355.8	354.1	357.5	356.6	356.4	-0.2
Printing and related support activities.....	345.3	340.9	339.0	342.3	344.7	341.0	340.6	341.0	0.4
Petroleum and coal products manufacturing.....	110.2	107.2	109.0	111.2	108.7	109.2	109.3	109.9	0.6
Chemical manufacturing.....	899.6	894.0	895.2	896.6	899.3	894.6	896.5	897.7	1.2
Plastics and rubber products manufacturing.....	707.7	696.4	696.0	691.1	706.5	696.4	695.8	689.7	-6.1

See footnotes at end of table.

ESTABLISHMENT DATA

Table B-1. Employees on nonfarm payrolls by industry sector and selected industry detail

— Continued

[In thousands]

Industry	Not seasonally adjusted				Seasonally adjusted				Change from: Apr.2026 - May2026 ^P
	May 2025	Mar. 2026	Apr. 2026 ^P	May 2026 ^P	May 2025	Mar. 2026	Apr. 2026 ^P	May 2026 ^P	
Nondurable goods - Continued									
Beverage, tobacco, and leather and allied product manufacturing.....	353.3	340.6	343.3	347.6	352.0	349.6	347.4	346.5	-0.9
Private service-providing.....	113,630	112,871	113,673	114,247	113,399	113,804	113,967	114,059	92
Trade, transportation, and utilities.....	28,631	28,404	28,477	28,595	28,765	28,650	28,712	28,709	-3
Wholesale trade.....	6,074.1	6,032.1	6,037.3	6,048.3	6,067.7	6,051.3	6,049.5	6,045.8	-3.7
Merchant wholesalers, durable goods.....	3,407.0	3,392.4	3,392.0	3,394.6	3,406.2	3,399.3	3,396.2	3,393.5	-2.7
Merchant wholesalers, nondurable goods....	2,220.7	2,200.3	2,205.2	2,216.7	2,213.4	2,210.6	2,211.2	2,213.9	2.7
Wholesale trade agents and brokers.....	446.4	439.4	440.1	437.0	448.1	441.4	442.1	438.4	-3.7
Retail trade.....	15,373.4	15,281.1	15,343.9	15,416.6	15,440.0	15,435.5	15,459.0	15,457.9	-1.1
Motor vehicle and parts dealers.....	2,056.2	2,038.7	2,043.0	2,049.3	2,052.2	2,045.7	2,045.8	2,044.5	-1.3
Automobile dealers.....	1,292.9	1,287.7	1,285.1	1,285.7	1,292.3	1,289.2	1,287.5	1,285.4	-2.1
Other motor vehicle dealers.....	164.0	155.5	160.1	165.5	159.3	158.5	160.3	160.9	0.6
Automotive parts, accessories, and tire retailers.....	599.3	595.5	597.8	598.1	600.6	598.0	598.0	598.2	0.2
Building material and garden equipment and supplies dealers.....	1,435.3	1,342.9	1,402.3	1,426.8	1,379.5	1,351.5	1,362.5	1,368.1	5.6
Food and beverage retailers.....	3,242.7	3,241.8	3,238.2	3,241.7	3,257.2	3,259.4	3,257.5	3,254.5	-3.0
Furniture, home furnishings, electronics, and appliance retailers.....	761.2	751.7	748.1	744.1	776.7	758.2	758.1	756.5	-1.6
Furniture and home furnishings retailers...	392.1	388.2	385.1	382.3	397.7	388.4	388.9	387.8	-1.1
Electronics and appliance retailers.....	369.1	363.5	363.0	361.8	379.0	369.8	369.2	368.7	-0.5
General merchandise retailers.....	3,195.0	3,190.6	3,195.1	3,198.9	3,238.1	3,238.9	3,254.4	3,246.2	-8.2
Department stores.....	904.0	917.1	908.3	910.8	933.2	938.4	935.4	936.9	1.5
Warehouse clubs, supercenters, and other general merchandise retailers....	2,291.0	2,273.5	2,286.8	2,288.1	2,304.9	2,300.5	2,319.0	2,309.3	-9.7
Health and personal care retailers.....	1,045.7	1,045.6	1,044.5	1,043.9	1,058.7	1,048.7	1,048.2	1,050.4	2.2
Gasoline stations and fuel dealers.....	1,044.0	1,049.0	1,050.5	1,059.3	1,045.7	1,059.5	1,056.1	1,060.5	4.4
Clothing, clothing accessories, shoe, and jewelry retailers.....	1,111.7	1,118.4	1,108.7	1,119.0	1,139.9	1,145.7	1,144.1	1,141.6	-2.5
Sporting goods, hobby, musical instrument, book, and miscellaneous retailers.....	1,481.6	1,502.4	1,513.5	1,533.6	1,492.0	1,527.9	1,532.3	1,535.6	3.3
Transportation and warehousing.....	6,582.1	6,485.9	6,491.4	6,522.7	6,655.5	6,557.6	6,596.9	6,597.5	0.6
Air transportation.....	574.0	576.1	575.6	569.6	573.4	575.9	575.8	567.1	-8.7
Rail transportation.....	155.8	150.0	150.1	150.1	155.4	149.9	149.4	149.6	0.2
Water transportation.....	71.8	69.3	69.8	70.2	70.2	71.3	70.6	69.3	-1.3
Truck transportation.....	1,487.0	1,442.0	1,457.3	1,463.7	1,487.7	1,464.3	1,469.2	1,464.8	-4.4
Transit and ground passenger transportation.....	506.0	503.9	500.1	511.6	489.8	490.8	486.5	495.9	9.4
Pipeline transportation.....	56.3	56.0	56.0	55.9	56.0	55.9	55.8	56.0	0.2
Scenic and sightseeing transportation.....	37.2	25.7	26.7	36.4	34.1	33.4	32.2	32.4	0.2
Support activities for transportation.....	832.7	820.9	821.0	817.9	833.8	823.8	823.9	821.1	-2.8
Couriers and messengers.....	1,010.4	1,022.3	1,022.5	1,029.6	1,079.8	1,059.8	1,097.5	1,098.9	1.4
Warehousing and storage.....	1,850.9	1,819.7	1,812.3	1,817.7	1,875.3	1,832.5	1,836.0	1,842.4	6.4
Utilities.....	601.6	604.8	604.2	607.1	601.7	605.8	606.8	608.2	1.4
Information.....	2,863	2,776	2,777	2,776	2,864	2,793	2,785	2,783	-2
Motion picture and sound recording industries.....	361.5	328.6	326.7	334.5	354.9	336.6	330.9	328.2	-2.7
Publishing industries.....	902.4	896.4	896.1	894.7	906.6	900.3	900.2	900.1	-0.1
Broadcasting and content providers.....	342.1	333.8	339.0	331.7	342.2	335.0	337.2	333.2	-4.0
Telecommunications.....	597.7	576.0	574.2	571.3	598.4	577.2	574.7	574.3	-0.4
Computing infrastructure providers, data processing, web hosting, and related services.....	480.0	462.4	463.3	465.4	481.2	464.0	462.4	466.1	3.7
Web search portals, libraries, archives, and other information services.....	179.7	178.8	177.5	178.8	181.1	179.4	179.7	180.6	0.9
Financial activities.....	9,186	9,077	9,088	9,079	9,211	9,132	9,126	9,104	-22
Finance and insurance.....	6,722.5	6,669.5	6,665.8	6,643.0	6,744.9	6,688.0	6,683.2	6,663.0	-20.2
Monetary authorities-central bank.....	19.8	18.6	18.6	18.5	19.9	18.8	18.7	18.6	-0.1
Credit intermediation and related activities.....	2,564.6	2,534.8	2,536.1	2,528.8	2,566.8	2,537.3	2,536.5	2,531.7	-4.8

See footnotes at end of table.

ESTABLISHMENT DATA

Table B-1. Employees on nonfarm payrolls by industry sector and selected industry detail

— Continued

[In thousands]

Industry	Not seasonally adjusted				Seasonally adjusted				Change from: Apr.2026 - May2026 ^P
	May 2025	Mar. 2026	Apr. 2026 ^P	May 2026 ^P	May 2025	Mar. 2026	Apr. 2026 ^P	May 2026 ^P	
Credit intermediation and related - Continued									
Depository credit intermediation ¹	1,778.4	1,772.6	1,771.4	1,766.4	1,782.1	1,773.6	1,773.6	1,770.4	-3.2
Commercial banking.....	1,369.8	1,356.9	1,354.4	1,349.9	1,372.4	1,356.9	1,357.3	1,354.7	-2.6
Nondepository credit intermediation.....	505.1	492.8	493.2	489.5	504.6	493.8	491.9	488.9	-3.0
Activities related to credit intermediation...	281.1	269.4	271.5	272.9	280.1	269.9	271.0	272.4	1.4
Securities, commodity contracts, funds, trusts, and other financial vehicles, investments, and related activities.....	1,126.7	1,156.8	1,161.4	1,156.9	1,137.4	1,165.5	1,169.4	1,164.8	-4.6
Insurance carriers and related activities.....	3,011.4	2,959.3	2,949.7	2,938.8	3,020.8	2,966.4	2,958.6	2,947.9	-10.7
Real estate and rental and leasing.....	2,463.6	2,407.2	2,422.1	2,436.2	2,465.9	2,443.7	2,442.5	2,440.9	-1.6
Real estate.....	1,857.1	1,829.4	1,840.6	1,841.8	1,860.5	1,850.6	1,851.1	1,848.6	-2.5
Rental and leasing services.....	584.6	556.6	560.3	573.2	583.5	571.7	570.0	571.1	1.1
Lessors of nonfinancial intangible assets (except copyrighted works).....	21.9	21.2	21.2	21.2	21.9	21.4	21.4	21.2	-0.2
Professional and business services.....	22,493	22,211	22,482	22,532	22,450	22,440	22,462	22,468	6
Professional, scientific, and technical services.....	10,749.5	10,778.7	10,852.9	10,769.0	10,783.8	10,795.6	10,811.9	10,813.5	1.6
Legal services.....	1,212.9	1,224.4	1,227.9	1,231.1	1,218.2	1,234.1	1,236.0	1,237.2	1.2
Accounting, tax preparation, bookkeeping, and payroll services.....	1,113.1	1,194.0	1,187.0	1,092.7	1,127.5	1,120.9	1,119.8	1,114.4	-5.4
Architectural, engineering, and related services.....	1,719.2	1,735.9	1,753.7	1,759.1	1,723.0	1,758.2	1,762.4	1,764.1	1.7
Specialized design services.....	146.2	148.5	148.4	148.0	147.7	150.3	149.3	148.6	-0.7
Computer systems design and related services.....	2,408.1	2,343.7	2,374.0	2,373.4	2,410.3	2,369.6	2,372.2	2,373.9	1.7
Management, scientific, and technical consulting services.....	1,859.4	1,860.7	1,877.1	1,871.8	1,864.3	1,875.2	1,879.7	1,876.2	-3.5
Scientific research and development services.....	926.9	905.6	913.5	915.0	927.9	910.7	915.0	915.9	0.9
Advertising, public relations, and related services.....	480.9	477.5	479.3	481.4	480.9	480.5	481.6	483.3	1.7
Other professional, scientific, and technical services.....	882.8	888.4	892.0	896.5	884.0	896.1	895.9	899.9	4.0
Management of companies and enterprises.....	2,617.3	2,606.8	2,602.0	2,605.1	2,625.2	2,616.2	2,611.4	2,614.3	2.9
Administrative and support and waste management and remediation services.....	9,126.6	8,825.1	9,027.0	9,158.3	9,040.8	9,028.6	9,038.6	9,040.0	1.4
Administrative and support services.....	8,606.9	8,306.4	8,503.3	8,630.4	8,519.7	8,503.6	8,512.1	8,512.3	0.2
Office administrative services.....	620.8	623.2	629.6	632.9	623.3	626.6	631.2	632.2	1.0
Facilities support services.....	179.6	184.0	182.8	181.2	179.6	184.3	182.9	183.2	0.3
Employment services ¹	3,221.7	3,125.8	3,166.7	3,237.5	3,208.5	3,180.5	3,187.5	3,191.1	3.6
Temporary help services.....	2,525.2	2,434.3	2,473.9	2,531.4	2,513.1	2,479.9	2,488.6	2,490.0	1.4
Business support services.....	652.7	627.5	628.7	620.8	658.9	630.1	627.9	625.6	-2.3
Travel arrangement and reservation services.....	188.4	181.8	183.5	184.5	187.5	183.4	183.2	184.0	0.8
Investigation and security services.....	1,045.2	1,038.9	1,054.0	1,050.0	1,043.5	1,046.5	1,053.4	1,051.1	-2.3
Services to buildings and dwellings.....	2,367.5	2,192.7	2,321.4	2,385.1	2,292.2	2,316.9	2,311.4	2,309.3	-2.1
Other support services.....	331.0	332.5	336.6	338.4	326.3	335.3	334.6	335.8	1.2
Waste management and remediation services.....	519.7	518.7	523.7	527.9	521.1	525.0	526.5	527.7	1.2
Private education and health services.....	27,274	27,888	27,983	27,903	27,276	27,792	27,846	27,886	40
Private educational services.....	4,085.9	4,176.2	4,195.8	4,062.1	4,058.7	4,035.6	4,030.9	4,024.3	-6.6
Health care and social assistance.....	23,188.4	23,712.2	23,787.1	23,841.1	23,217.0	23,756.7	23,814.7	23,861.9	47.2
Health care ³	17,982.6	18,369.1	18,419.3	18,441.4	18,028.8	18,411.1	18,451.7	18,486.9	35.2
Ambulatory health care services.....	8,962.2	9,158.5	9,196.1	9,213.1	8,973.5	9,184.6	9,207.6	9,233.3	25.7
Offices of physicians.....	2,994.7	3,039.0	3,044.4	3,049.1	3,000.3	3,049.8	3,053.2	3,057.9	4.7
Offices of dentists.....	1,044.6	1,054.2	1,058.7	1,061.9	1,047.3	1,059.8	1,061.7	1,063.3	1.6
Offices of other health practitioners.....	1,307.5	1,331.7	1,348.9	1,342.9	1,305.6	1,337.0	1,342.6	1,345.3	2.7
Outpatient care centers.....	1,175.0	1,195.7	1,191.6	1,191.9	1,178.1	1,195.4	1,194.7	1,195.8	1.1
Medical and diagnostic laboratories.....	306.1	308.3	311.0	311.4	306.5	309.0	310.1	311.9	1.8
Home health care services.....	1,773.6	1,854.2	1,867.1	1,877.7	1,773.8	1,858.5	1,870.3	1,881.2	10.9
Other ambulatory health care services.....	360.7	375.4	374.4	378.2	362.0	375.1	375.0	377.9	2.9
Hospitals.....	5,617.2	5,749.4	5,747.8	5,745.2	5,642.5	5,755.3	5,757.5	5,763.5	6.0

See footnotes at end of table.

ESTABLISHMENT DATA

Table B-1. Employees on nonfarm payrolls by industry sector and selected industry detail

— Continued

[In thousands]

Industry	Not seasonally adjusted				Seasonally adjusted				Change from: Apr.2026 - May2026 ^p
	May 2025	Mar. 2026	Apr. 2026 ^p	May 2026 ^p	May 2025	Mar. 2026	Apr. 2026 ^p	May 2026 ^p	
Health care - Continued									
Nursing and residential care facilities.	3,403.2	3,461.2	3,475.4	3,483.1	3,412.8	3,471.2	3,486.6	3,490.1	3.5
Skilled nursing care facilities.	1,540.6	1,572.7	1,576.4	1,579.3	1,547.9	1,578.5	1,585.2	1,585.1	-0.1
Residential intellectual and developmental disability, mental health, and substance abuse facilities.	687.8	703.6	707.0	706.0	688.3	704.8	707.1	705.7	-1.4
Continuing care retirement communities and assisted living facilities for the elderly.	1,004.1	1,013.2	1,019.0	1,023.4	1,005.6	1,015.5	1,020.6	1,024.7	4.1
Other residential care facilities.	170.7	171.7	173.0	174.4	171.0	172.4	173.7	174.6	0.9
Social assistance.	5,205.8	5,343.1	5,367.8	5,399.7	5,188.2	5,345.6	5,363.0	5,375.0	12.0
Individual and family services.	3,568.2	3,723.7	3,753.2	3,769.3	3,571.7	3,733.5	3,756.9	3,766.5	9.6
Community food and housing, and emergency and other relief services.	235.9	238.4	235.2	236.7	235.9	238.0	235.6	236.5	0.9
Vocational rehabilitation services.	285.1	279.2	275.1	278.7	283.8	279.9	277.0	279.4	2.4
Child care services.	1,116.6	1,101.8	1,104.3	1,115.0	1,096.8	1,094.2	1,093.5	1,092.6	-0.9
Leisure and hospitality.	17,162	16,533	16,843	17,309	16,839	16,979	17,009	17,079	70
Arts, entertainment, and recreation.	2,772.7	2,511.2	2,607.1	2,782.7	2,680.8	2,687.4	2,689.1	2,700.8	11.7
Performing arts, spectator sports, and related industries.	623.9	574.8	605.2	627.1	594.4	605.4	602.1	608.8	6.7
Museums, historical sites, and similar institutions.	182.6	173.9	179.7	185.8	178.7	181.9	182.5	183.2	0.7
Amusement, gambling, and recreation industries.	1,966.2	1,762.5	1,822.2	1,969.8	1,907.7	1,900.1	1,904.5	1,908.8	4.3
Accommodation and food services.	14,389.1	14,021.6	14,236.2	14,526.5	14,158.0	14,291.6	14,319.6	14,378.2	58.6
Accommodation.	1,958.4	1,863.4	1,875.9	1,936.2	1,940.5	1,936.4	1,929.7	1,940.3	10.6
Food services and drinking places.	12,430.7	12,158.2	12,360.3	12,590.3	12,217.5	12,355.2	12,389.9	12,437.9	48.0
Other services.	6,021	5,982	6,023	6,053	5,994	6,018	6,027	6,030	3
Repair and maintenance.	1,481.7	1,469.4	1,476.7	1,479.7	1,471.8	1,472.5	1,471.2	1,471.2	0.0
Personal and laundry services.	1,608.2	1,585.7	1,609.9	1,624.5	1,595.9	1,601.3	1,610.4	1,614.0	3.6
Religious, grantmaking, civic, professional, and similar organizations.	2,930.9	2,926.8	2,936.6	2,948.8	2,925.9	2,944.4	2,945.6	2,944.5	-1.1
Government.	23,816	23,644	23,650	23,629	23,561	23,333	23,335	23,387	52
Federal.	2,948	2,674	2,672	2,679	2,952	2,682	2,676	2,677	1
Federal, except U.S. Postal Service.	2,357.7	2,072.7	2,072.3	2,078.0	2,360.2	2,082.7	2,078.6	2,076.0	-2.6
U.S. Postal Service.	590.1	601.5	600.0	600.6	592.2	599.0	597.8	600.7	2.9
State government.	5,508	5,617	5,631	5,463	5,515	5,469	5,471	5,467	-4
State government education.	2,629.5	2,757.8	2,766.5	2,587.7	2,636.3	2,599.7	2,599.2	2,588.4	-10.8
State government, excluding education.	2,878.2	2,859.6	2,864.8	2,875.2	2,878.4	2,869.7	2,871.7	2,878.1	6.4
Local government.	15,360	15,353	15,347	15,487	15,094	15,182	15,188	15,243	55
Local government education.	8,472.2	8,517.3	8,481.9	8,507.3	8,207.9	8,240.5	8,238.1	8,250.2	12.1
Local government, excluding education.	6,887.9	6,835.8	6,865.0	6,979.5	6,886.5	6,941.3	6,949.7	6,993.2	43.5

¹ Includes other industries, not shown separately.

² Includes motor vehicle manufacturing, motor vehicle body and trailer manufacturing, and motor vehicle parts manufacturing.

³ Includes ambulatory health care services, hospitals, and nursing and residential care facilities.

p Preliminary

NOTE: Data have been revised to reflect March 2025 benchmark levels and updated seasonal adjustment factors.

ESTABLISHMENT DATA

Table B-2. Average weekly hours and overtime of all employees on private nonfarm payrolls by industry sector, seasonally adjusted

Industry	May 2025	Mar. 2026	Apr. 2026 ^p	May 2026 ^p
AVERAGE WEEKLY HOURS				
Total private.....	34.2	34.2	34.3	34.3
Goods-producing.....	39.8	40.0	40.1	40.1
Mining and logging.....	44.9	45.7	45.5	45.6
Construction.....	39.0	39.2	39.3	39.2
Manufacturing.....	40.1	40.3	40.4	40.4
Durable goods.....	40.6	40.6	40.8	40.8
Nondurable goods.....	39.2	39.7	39.8	39.8
Private service-providing.....	33.2	33.1	33.2	33.2
Trade, transportation, and utilities.....	34.0	34.1	34.1	34.2
Wholesale trade.....	39.1	39.2	39.2	39.2
Retail trade.....	29.7	30.0	30.1	30.1
Transportation and warehousing.....	38.4	38.3	38.2	38.4
Utilities.....	42.1	42.8	42.4	42.2
Information.....	37.1	37.5	37.3	38.0
Financial activities.....	37.6	37.4	37.4	37.4
Professional and business services.....	36.5	36.6	36.6	36.7
Private education and health services.....	32.7	32.4	32.6	32.7
Leisure and hospitality.....	25.6	25.3	25.5	25.4
Other services.....	31.9	32.2	32.2	32.1
AVERAGE OVERTIME HOURS				
Manufacturing.....	2.9	3.0	3.0	3.1
Durable goods.....	2.9	3.0	3.0	3.1
Nondurable goods.....	2.9	3.1	3.1	3.1

p Preliminary

NOTE: Data have been revised to reflect March 2025 benchmark levels and updated seasonal adjustment factors.

ESTABLISHMENT DATA

Table B-3. Average hourly and weekly earnings of all employees on private nonfarm payrolls by industry sector, seasonally adjusted

Industry	Average hourly earnings				Average weekly earnings			
	May 2025	Mar. 2026	Apr. 2026 ^p	May 2026 ^p	May 2025	Mar. 2026	Apr. 2026 ^p	May 2026 ^p
Total private.....	\$36.28	\$37.35	\$37.41	\$37.53	\$1,240.78	\$1,277.37	\$1,283.16	\$1,287.28
Goods-producing.....	37.03	38.34	38.46	38.57	1,473.79	1,533.60	1,542.25	1,546.66
Mining and logging.....	40.20	41.12	41.35	41.62	1,804.98	1,879.18	1,881.43	1,897.87
Construction.....	39.47	40.92	41.01	41.20	1,539.33	1,604.06	1,611.69	1,615.04
Manufacturing.....	35.31	36.53	36.66	36.71	1,415.93	1,472.16	1,481.06	1,483.08
Durable goods.....	37.49	38.81	38.94	38.98	1,522.09	1,575.69	1,588.75	1,590.38
Nondurable goods.....	31.63	32.71	32.84	32.88	1,239.90	1,298.59	1,307.03	1,308.62
Private service-providing.....	36.11	37.12	37.17	37.30	1,198.85	1,228.67	1,234.04	1,238.36
Trade, transportation, and utilities.....	30.82	31.82	31.85	31.92	1,047.88	1,085.06	1,086.09	1,091.66
Wholesale trade.....	38.63	39.74	39.85	39.97	1,510.43	1,557.81	1,562.12	1,566.82
Retail trade.....	25.30	26.19	26.19	26.23	751.41	785.70	788.32	789.52
Transportation and warehousing.....	31.37	32.35	32.38	32.48	1,204.61	1,239.01	1,236.92	1,247.23
Utilities.....	51.86	54.86	55.11	55.29	2,183.31	2,348.01	2,336.66	2,333.24
Information.....	52.32	54.64	54.87	55.35	1,941.07	2,049.00	2,046.65	2,103.30
Financial activities.....	47.45	48.89	48.96	49.22	1,784.12	1,828.49	1,831.10	1,840.83
Professional and business services.....	44.00	45.28	45.42	45.58	1,606.00	1,657.25	1,662.37	1,672.79
Private education and health services.....	35.50	36.18	36.23	36.29	1,160.85	1,172.23	1,181.10	1,186.68
Leisure and hospitality.....	22.68	23.47	23.52	23.58	580.61	593.79	599.76	598.93
Other services.....	32.86	33.68	33.77	33.88	1,048.23	1,084.50	1,087.39	1,087.55

p Preliminary

NOTE: Data have been revised to reflect March 2025 benchmark levels and updated seasonal adjustment factors.

ESTABLISHMENT DATA

Table B-4. Indexes of aggregate weekly hours and payrolls for all employees on private nonfarm payrolls by industry sector, seasonally adjusted

[2007=100]

Industry	Index of aggregate weekly hours ¹					Index of aggregate weekly payrolls ²				
	May 2025	Mar. 2026	Apr. 2026 ^p	May 2026 ^p	Percent change from: Apr. 2026 - May 2026 ^p	May 2025	Mar. 2026	Apr. 2026 ^p	May 2026 ^p	Percent change from: Apr. 2026 - May 2026 ^p
Total private.....	115.8	116.2	116.7	116.8	0.1	200.9	207.5	208.7	209.5	0.4
Goods-producing.....	97.7	98.1	98.4	98.5	0.1	163.5	169.9	171.0	171.7	0.4
Mining and logging.....	87.2	86.7	87.1	87.8	0.8	140.7	143.2	144.6	146.8	1.5
Construction.....	111.2	112.3	112.7	112.7	0.0	190.6	199.7	200.8	201.7	0.4
Manufacturing.....	91.3	91.4	91.6	91.7	0.1	150.0	155.3	156.2	156.5	0.2
Durable goods.....	89.7	89.5	89.9	90.1	0.2	149.4	154.2	155.6	156.1	0.3
Nondurable goods.....	94.0	94.6	94.8	94.6	-0.2	150.9	157.0	158.0	157.8	-0.1
Private service-providing.....	121.2	121.3	121.8	121.9	0.1	212.7	218.8	220.0	221.0	0.5
Trade, transportation, and utilities.....	106.9	106.7	107.0	107.3	0.3	177.6	183.2	183.7	184.7	0.5
Wholesale trade.....	104.7	104.6	104.6	104.5	-0.1	169.1	173.9	174.4	174.8	0.2
Retail trade.....	93.3	94.2	94.7	94.7	0.0	156.1	163.2	164.0	164.2	0.1
Transportation and warehousing.....	146.8	144.3	144.8	145.6	0.6	234.4	237.5	238.5	240.5	0.8
Utilities.....	109.6	112.2	111.4	111.1	-0.3	187.8	203.4	202.7	202.9	0.1
Information.....	97.1	95.7	94.9	96.6	1.8	180.8	186.1	185.4	190.4	2.7
Financial activities.....	113.5	111.9	111.8	111.5	-0.3	210.0	213.4	213.5	214.1	0.3
Professional and business services.....	128.2	128.4	128.6	129.0	0.3	228.4	235.6	236.5	238.1	0.7
Private education and health services..	145.7	147.1	148.3	148.9	0.4	248.8	256.0	258.4	260.0	0.6
Leisure and hospitality.....	123.0	122.6	123.8	123.8	0.0	225.1	232.1	234.8	235.5	0.3
Other services.....	110.2	111.7	111.9	111.6	-0.3	198.6	206.2	207.1	207.2	0.0

¹ The indexes of aggregate weekly hours are calculated by dividing the current month's estimates of aggregate hours by the corresponding 2007 annual average aggregate hours. Aggregate hours estimates are the product of estimates of average weekly hours and employment.

² The indexes of aggregate weekly payrolls are calculated by dividing the current month's estimates of aggregate weekly payrolls by the corresponding 2007 annual average aggregate weekly payrolls. Aggregate payrolls estimates are the product of estimates of average hourly earnings, average weekly hours, and employment.

p Preliminary

NOTE: Data have been revised to reflect March 2025 benchmark levels and updated seasonal adjustment factors.

ESTABLISHMENT DATA

Table B-5. Employment of women on nonfarm payrolls by industry sector, seasonally adjusted

Industry	Women employees (in thousands)				Percent of all employees			
	May 2025	Mar. 2026	Apr. 2026 ^p	May 2026 ^p	May 2025	Mar. 2026	Apr. 2026 ^p	May 2026 ^p
Total nonfarm.....	79,177	79,364	79,461	79,566	50.0	50.0	50.0	50.0
Total private.....	65,399	65,693	65,786	65,879	48.5	48.5	48.6	48.6
Goods-producing.....	4,918	4,892	4,888	4,887	22.8	22.7	22.7	22.7
Mining and logging.....	86	82	82	81	13.9	13.6	13.5	13.2
Construction.....	1,190	1,191	1,192	1,197	14.4	14.3	14.3	14.4
Manufacturing.....	3,642	3,619	3,614	3,609	28.8	28.7	28.7	28.6
Durable goods.....	1,920	1,900	1,897	1,893	24.5	24.3	24.2	24.1
Nondurable goods.....	1,722	1,719	1,717	1,716	35.8	36.0	36.0	36.0
Private service-providing.....	60,481	60,801	60,898	60,992	53.3	53.4	53.4	53.5
Trade, transportation, and utilities.....	11,150	11,102	11,120	11,136	38.8	38.8	38.7	38.8
Wholesale trade.....	1,847.6	1,831.1	1,835.3	1,834.2	30.4	30.3	30.3	30.3
Retail trade.....	7,388.6	7,409.4	7,419.5	7,431.8	47.9	48.0	48.0	48.1
Transportation and warehousing.....	1,757.5	1,705.6	1,709.2	1,714.9	26.4	26.0	25.9	26.0
Utilities.....	156.1	155.4	155.7	155.5	25.9	25.7	25.7	25.6
Information.....	1,148	1,131	1,128	1,118	40.1	40.5	40.5	40.2
Financial activities.....	5,064	4,976	4,963	4,951	55.0	54.5	54.4	54.4
Professional and business services.....	10,170	10,153	10,176	10,180	45.3	45.2	45.3	45.3
Private education and health services.....	20,897	21,287	21,329	21,363	76.6	76.6	76.6	76.6
Leisure and hospitality.....	8,818	8,902	8,927	8,984	52.4	52.4	52.5	52.6
Other services.....	3,234	3,250	3,255	3,260	54.0	54.0	54.0	54.1
Government.....	13,778	13,671	13,675	13,687	58.5	58.6	58.6	58.5

p Preliminary

NOTE: Data have been revised to reflect March 2025 benchmark levels and updated seasonal adjustment factors.

ESTABLISHMENT DATA

Table B-6. Employment of production and nonsupervisory employees on private nonfarm payrolls by industry sector, seasonally adjusted¹

[In thousands]

Industry	May 2025	Mar. 2026	Apr. 2026 ^p	May 2026 ^p
Total private.....	109,984	110,423	110,642	110,835
Goods-producing.....	15,289	15,258	15,272	15,281
Mining and logging.....	459	451	456	461
Construction.....	6,013	6,045	6,051	6,052
Manufacturing.....	8,817	8,762	8,765	8,768
Durable goods.....	5,307	5,290	5,295	5,313
Nondurable goods.....	3,510	3,472	3,470	3,455
Private service-providing.....	94,695	95,165	95,370	95,554
Trade, transportation, and utilities.....	24,385	24,337	24,396	24,396
Wholesale trade.....	4,808.5	4,769.4	4,781.4	4,779.2
Retail trade.....	13,264.3	13,327.5	13,352.5	13,366.3
Transportation and warehousing.....	5,836.9	5,758.8	5,779.1	5,767.4
Utilities.....	475.5	481.6	482.5	483.5
Information.....	2,288	2,224	2,222	2,218
Financial activities.....	6,974	6,928	6,920	6,906
Professional and business services.....	17,606	17,639	17,680	17,693
Private education and health services.....	23,890	24,367	24,416	24,451
Leisure and hospitality.....	14,683	14,779	14,841	14,994
Other services.....	4,869	4,891	4,895	4,896

¹ Data relate to production employees in mining and logging and manufacturing, construction employees in construction, and nonsupervisory employees in the service-providing industries. These groups account for approximately four-fifths of the total employment on private nonfarm payrolls.

^p Preliminary

NOTE: Data have been revised to reflect March 2025 benchmark levels and updated seasonal adjustment factors.

ESTABLISHMENT DATA

Table B-7. Average weekly hours and overtime of production and nonsupervisory employees on private nonfarm payrolls by industry sector, seasonally adjusted¹

Industry	May 2025	Mar. 2026	Apr. 2026 ^p	May 2026 ^p
AVERAGE WEEKLY HOURS				
Total private.....	33.6	33.8	33.8	33.8
Goods-producing.....	40.7	41.1	41.2	41.2
Mining and logging.....	44.7	47.0	46.9	47.2
Construction.....	39.9	40.1	40.2	40.1
Manufacturing.....	41.0	41.5	41.6	41.6
Durable goods.....	41.2	41.8	41.9	42.0
Nondurable goods.....	40.7	41.0	41.2	41.0
Private service-providing.....	32.5	32.6	32.6	32.6
Trade, transportation, and utilities.....	34.1	34.4	34.4	34.4
Wholesale trade.....	39.1	39.3	39.4	39.4
Retail trade.....	30.3	30.6	30.6	30.6
Transportation and warehousing.....	38.1	38.2	38.2	38.3
Utilities.....	42.5	43.2	42.7	42.4
Information.....	35.9	35.9	35.8	35.8
Financial activities.....	37.3	37.2	37.3	37.2
Professional and business services.....	36.3	36.6	36.7	36.8
Private education and health services.....	31.7	31.7	31.7	31.8
Leisure and hospitality.....	24.1	24.2	24.2	24.1
Other services.....	30.9	31.4	31.2	31.3
AVERAGE OVERTIME HOURS				
Manufacturing.....	3.7	3.9	4.0	4.0
Durable goods.....	3.7	3.9	4.0	4.0
Nondurable goods.....	3.7	3.9	4.0	4.0

¹ Data relate to production employees in mining and logging and manufacturing, construction employees in construction, and nonsupervisory employees in the service-providing industries. These groups account for approximately four-fifths of the total employment on private nonfarm payrolls.

^p Preliminary

NOTE: Data have been revised to reflect March 2025 benchmark levels and updated seasonal adjustment factors.

ESTABLISHMENT DATA

Table B-8. Average hourly and weekly earnings of production and nonsupervisory employees on private nonfarm payrolls by industry sector, seasonally adjusted¹

Industry	Average hourly earnings				Average weekly earnings			
	May 2025	Mar. 2026	Apr. 2026 ^p	May 2026 ^p	May 2025	Mar. 2026	Apr. 2026 ^p	May 2026 ^p
Total private.....	\$31.20	\$32.12	\$32.23	\$32.31	\$1,048.32	\$1,085.66	\$1,089.37	\$1,092.08
Goods-producing.....	32.34	33.59	33.73	33.87	1,316.24	1,380.55	1,389.68	1,395.44
Mining and logging.....	37.32	38.19	38.59	38.63	1,668.20	1,794.93	1,809.87	1,823.34
Construction.....	37.10	38.62	38.77	38.97	1,480.29	1,548.66	1,558.55	1,562.70
Manufacturing.....	28.89	29.96	30.09	30.19	1,184.49	1,243.34	1,251.74	1,255.90
Durable goods.....	30.53	31.81	32.03	32.15	1,257.84	1,329.66	1,342.06	1,350.30
Nondurable goods.....	26.37	27.09	27.09	27.12	1,073.26	1,110.69	1,116.11	1,111.92
Private service-providing.....	30.98	31.82	31.93	32.00	1,006.85	1,037.33	1,040.92	1,043.20
Trade, transportation, and utilities.....	26.68	27.57	27.62	27.67	909.79	948.41	950.13	951.85
Wholesale trade.....	32.06	33.11	33.25	33.28	1,253.55	1,301.22	1,310.05	1,311.23
Retail trade.....	21.45	22.11	22.18	22.24	649.94	676.57	678.71	680.54
Transportation and warehousing.....	29.86	31.05	30.99	31.04	1,137.67	1,186.11	1,183.82	1,188.83
Utilities.....	45.60	47.98	48.04	48.05	1,938.00	2,072.74	2,051.31	2,037.32
Information.....	42.84	44.83	45.31	45.47	1,537.96	1,609.40	1,622.10	1,627.83
Financial activities.....	37.23	38.64	38.74	38.87	1,388.68	1,437.41	1,445.00	1,445.96
Professional and business services.....	37.03	38.12	38.28	38.45	1,344.19	1,395.19	1,404.88	1,414.96
Private education and health services.....	32.69	33.09	33.21	33.22	1,036.27	1,048.95	1,052.76	1,056.40
Leisure and hospitality.....	20.08	20.85	20.90	20.96	483.93	504.57	505.78	505.14
Other services.....	28.74	29.40	29.50	29.56	888.07	923.16	920.40	925.23

¹ Data relate to production employees in mining and logging and manufacturing, construction employees in construction, and nonsupervisory employees in the service-providing industries. These groups account for approximately four-fifths of the total employment on private nonfarm payrolls.

p Preliminary

NOTE: Data have been revised to reflect March 2025 benchmark levels and updated seasonal adjustment factors.

ESTABLISHMENT DATA

Table B-9. Indexes of aggregate weekly hours and payrolls for production and nonsupervisory employees on private nonfarm payrolls by industry sector, seasonally adjusted¹

[2002=100]

Industry	Index of aggregate weekly hours ²					Index of aggregate weekly payrolls ³				
	May 2025	Mar. 2026	Apr. 2026 ^p	May 2026 ^p	Percent change from: Apr. 2026 - May 2026 ^p	May 2025	Mar. 2026	Apr. 2026 ^p	May 2026 ^p	Percent change from: Apr. 2026 - May 2026 ^p
Total private.....	123.1	124.4	124.6	124.8	0.2	256.8	267.0	268.4	269.6	0.4
Goods-producing.....	95.1	95.8	96.2	96.2	0.0	188.3	197.1	198.6	199.5	0.5
Mining and logging.....	109.0	112.6	113.6	115.6	1.8	236.6	250.2	255.1	259.8	1.8
Construction.....	120.1	121.4	121.8	121.5	-0.2	240.7	253.1	255.0	255.7	0.3
Manufacturing.....	83.0	83.5	83.7	83.7	0.0	156.8	163.5	164.7	165.3	0.4
Durable goods.....	82.1	83.1	83.3	83.8	0.6	156.6	165.0	166.7	168.3	1.0
Nondurable goods.....	84.2	83.9	84.2	83.5	-0.8	156.8	160.6	161.2	159.9	-0.8
Private service-providing.....	131.1	132.2	132.5	132.7	0.2	278.6	288.5	290.1	291.3	0.4
Trade, transportation, and utilities.....	116.4	117.2	117.5	117.5	0.0	221.9	230.9	231.9	232.3	0.2
Wholesale trade.....	111.6	111.2	111.8	111.8	0.0	211.1	217.4	219.4	219.5	0.0
Retail trade.....	101.9	103.4	103.6	103.7	0.1	187.4	196.0	197.0	197.8	0.4
Transportation and warehousing.....	168.3	166.5	167.1	167.2	0.1	319.9	329.0	329.6	330.3	0.2
Utilities.....	103.3	106.4	105.3	104.8	-0.5	196.7	213.0	211.2	210.2	-0.5
Information.....	93.8	91.1	90.8	90.6	-0.2	198.8	202.3	203.7	204.0	0.1
Financial activities.....	122.4	121.3	121.5	120.9	-0.5	280.4	288.4	289.5	289.1	-0.1
Professional and business services.....	142.7	144.1	144.8	145.3	0.3	314.2	326.8	329.8	332.4	0.8
Private education and health services..	161.5	164.7	165.0	165.8	0.5	348.4	359.7	361.7	363.5	0.5
Leisure and hospitality.....	129.6	131.0	131.6	132.4	0.6	295.6	310.2	312.2	315.1	0.9
Other services.....	105.5	107.7	107.1	107.5	0.4	221.0	230.7	230.2	231.5	0.6

¹ Data relate to production employees in mining and logging and manufacturing, construction employees in construction, and nonsupervisory employees in the service-providing industries. These groups account for approximately four-fifths of the total employment on private nonfarm payrolls.

² The indexes of aggregate weekly hours are calculated by dividing the current month's estimates of aggregate hours by the corresponding 2002 annual average aggregate hours. Aggregate hours estimates are the product of estimates of average weekly hours and employment.

³ The indexes of aggregate weekly payrolls are calculated by dividing the current month's estimates of aggregate weekly payrolls by the corresponding 2002 annual average aggregate weekly payrolls. Aggregate payrolls estimates are the product of estimates of average hourly earnings, average weekly hours, and employment.

p Preliminary

NOTE: Data have been revised to reflect March 2025 benchmark levels and updated seasonal adjustment factors.