



### Cutting, punching, and press machine setters, operators, and tenders, metal and plastic

Set up, operate, or tend machines to saw, cut, shear, slit, punch, crimp, notch, bend, or straighten metal or plastic material.

#### Cognitive and mental requirements

The qualifications that workers need to use judgment, make decisions, interact with others, and adapt to changes in jobs.

In 2022, more than basic people skills were required for 16.3 percent of cutting, punching, and press machine setters, operators, and tenders, metal and plastic, and basic people skills were required for 83.7 percent.

**Table 1. Percentage of cutting, punching, and press machine setters, operators, and tenders, metal and plastic with cognitive and mental requirements, 2022**

Requirement	Yes	No
<b>Pace: Pause control</b>	26.2	73.8
<b>Working around crowds</b>	-	100.0
<b>Telework</b>	-	100.0

Source: U.S. Bureau of Labor Statistics, Occupational Requirements Survey

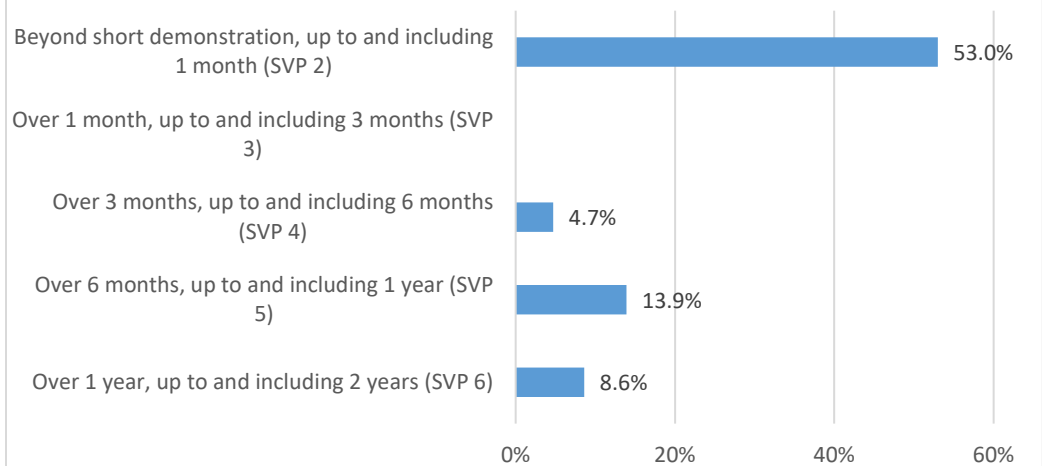
### Education, training, and experience requirements

The minimum level of formal education required, credentials necessary, on-the-job training, and prior work experience necessary for average performance in jobs.

In 2022, credentials were required for 15.4 percent of cutting, punching, and press machine setters, operators, and tenders, metal and plastic. Prior work experience was required for 32.5 percent.

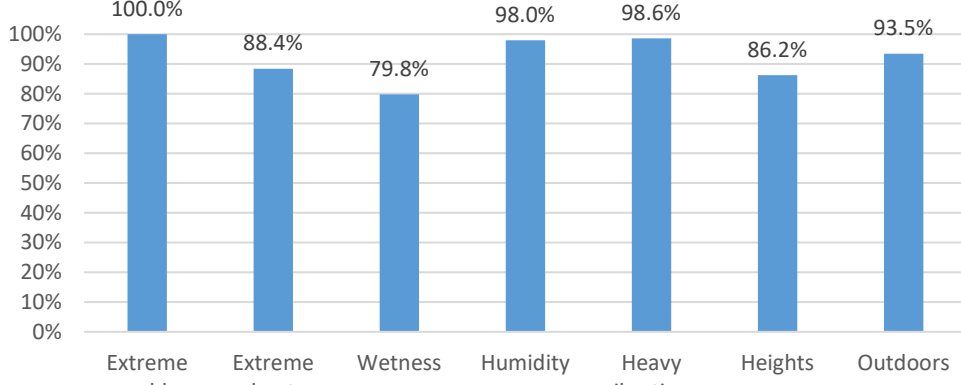
No minimum education was required for 43.6 percent of cutting, punching, and press machine setters, operators, and tenders, metal and plastic and a high school diploma was required for 56.4 percent.

**Chart 1. Percentage of cutting, punching, and press machine setters, operators, and tenders, metal and plastic by specific preparation time (SVP) level, 2022**



Source: U.S. Bureau of Labor Statistics, Occupational Requirements Survey

**Chart 2. Percentage of cutting, punching, and press machine setters, operators, and tenders, metal and plastic without exposure to environmental conditions, 2022**



**Environmental conditions**

The various tangible or concrete hazards or difficulties that are in the vicinity of where jobs’ critical tasks are performed.

In 2022, 100.0 percent of cutting, punching, and press machine setters, operators, and tenders, metal and plastic were not exposed to extreme cold, and 88.4 percent were not exposed to extreme heat. Wetness was not present for 79.8 percent, 98.6 percent were not exposed to heavy vibrations, and 93.5 percent were not exposed to the outdoors.

Source: U.S. Bureau of Labor Statistics, Occupational Requirements Survey

**Physical demands**

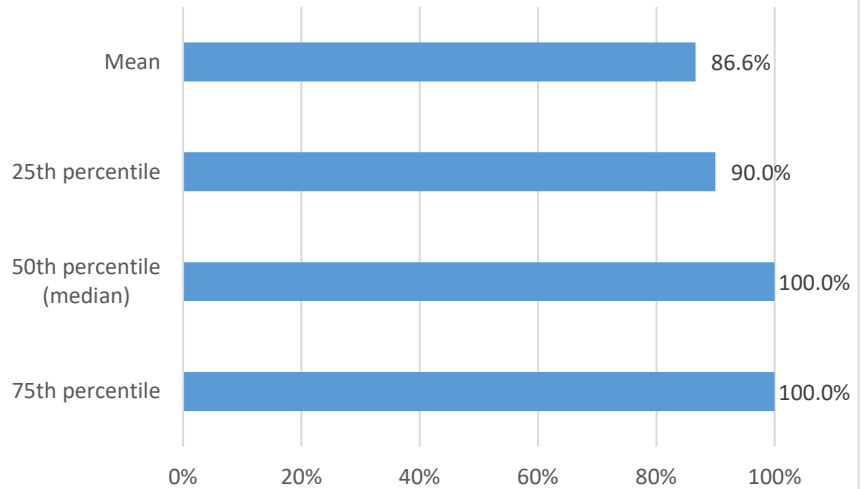
Refer to the physical activities required to perform tasks in jobs. The presence and, in some cases, duration of these activities are published.

In 2022, reaching at or below the shoulder was required for 89.1 percent of cutting, punching, and press machine setters, operators, and tenders, metal and plastic. For 40.6 percent of workers, reaching at or below the shoulder was occasionally performed, and for 15.7 percent reaching at or below the shoulder occurred frequently.

Performing work in low postures was required for 71.3 percent of cutting, punching, and press machine setters, operators, and tenders, metal and plastic and was not required for 28.7 percent.

On average, cutting, punching, and press machine setters, operators, and tenders, metal and plastic spent 13.4 percent of the workday sitting and 86.6 percent of the workday standing.

**Chart 3. Cutting, punching, and press machine setters, operators, and tenders, metal and plastic by percent of workday standing, 2022**



Source: U.S. Bureau of Labor Statistics, Occupational Requirements Survey

**Table 2. Percentage of cutting, punching, and press machine setters, operators, and tenders, metal and plastic with physical demands, 2022**

Requirement	Yes	No
Driving	28.1	71.9

Source: U.S. Bureau of Labor Statistics, Occupational Requirements Survey

