



Light truck drivers

Drive a light vehicle, such as a truck or van, with a capacity of less than 26,001 pounds Gross Vehicle Weight (GVW), primarily to pick up merchandise or packages from a distribution center and deliver. May load and unload vehicle.

For terms and definitions in this profile, see [definitions of major terms](#).

Cognitive and mental requirements

The qualifications that workers need to use judgement, make decisions, interact with others, and adapt to changes in jobs.

In 2025, external verbal interactions were required constantly (every few minutes) for less than 10 percent of light truck drivers. External verbal interactions were required more than once per hour (but not constantly) for 70.6 percent.

Table 1. Percentage of light truck drivers with cognitive and mental requirements, 2025

Requirement	Yes	No
Ability to pause work (and take brief unscheduled breaks)	27.3	72.7
Supervising others	<0.5	>99.5
Supervisor present in immediate work area	<30	>70
Telework routinely allowed	<0.5	>99.5
Work schedule varies	41.4	58.6
Working around crowds	<0.5	>99.5

Source: U.S. Bureau of Labor Statistics, Occupational Requirements Survey

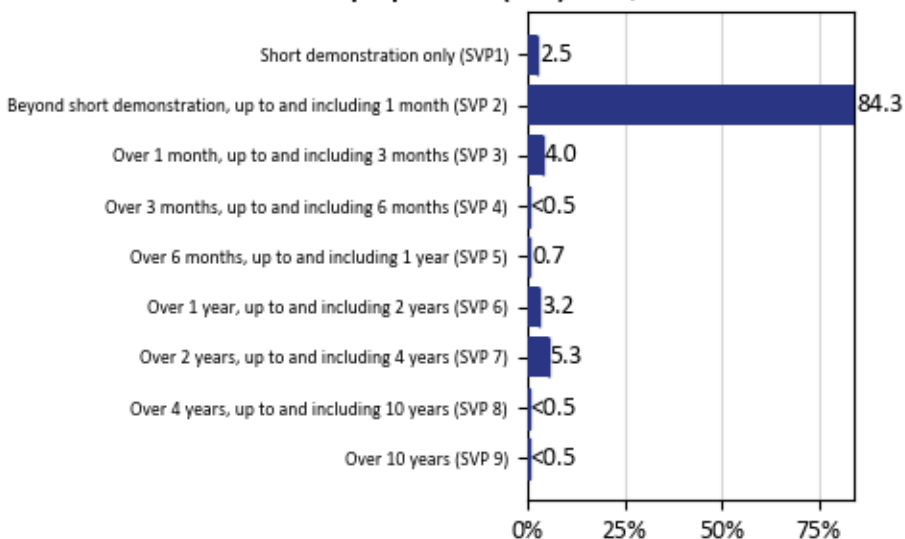
Education, training, and experience requirements

The minimum level of formal education required, credentials necessary, on-the-job training, and prior work experience necessary for average performance in jobs. The time associated with these requirements is combined to calculate the specific vocational preparation level needed for the job.

In 2025, prior work experience was required for 10.5 percent of light truck drivers and on-the-job training was required for 97.3 percent.

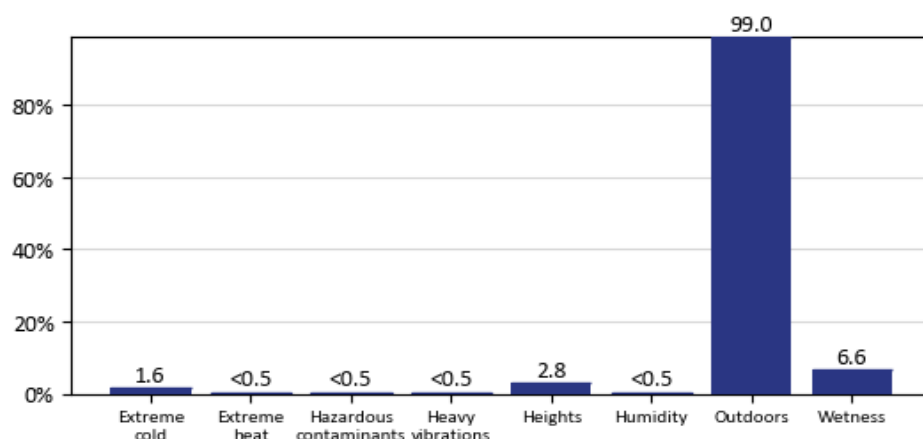
No minimum education was required for 79.4 percent of light truck drivers.

Chart 1. Percentage of light truck drivers by specific vocational preparation (SVP) level, 2025



Note: Striped bars represent range estimates where precise value is unpublished.
Source: U.S. Bureau of Labor Statistics, Occupational Requirements Survey

Chart 2. Percentage of light truck drivers with exposure to environmental conditions, 2025



Note: Striped bars represent range estimates where precise value is unpublished.
Source: U.S. Bureau of Labor Statistics, Occupational Requirements Survey

Environmental conditions

The various hazards or difficulties that are in the area where workers perform their critical tasks.

In 2025, a quiet noise exposure was present for 4.5 percent of light truck drivers. Another 94.3 percent were exposed to moderate noise, less than 5 percent were exposed to loud noise, and less than 0.5 percent to very loud noise. Personal protective equipment (PPE) was used by less than 5 percent of workers to mitigate noise exposure and was not used by greater than 95 percent.

Physical demands

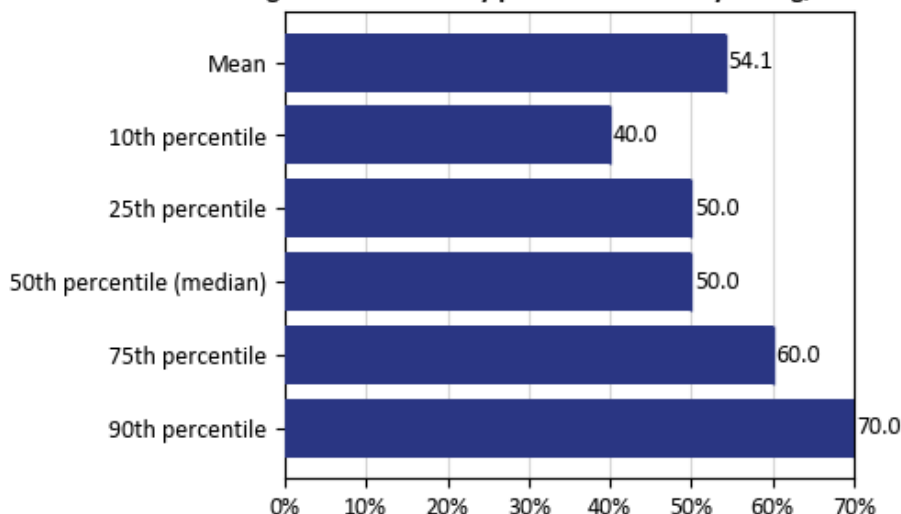
The physical activities required to perform tasks in jobs. The presence and, in some cases, duration of these activities are published.

In 2025, speaking was required for greater than 95 percent of light truck drivers and was not required for less than 5 percent. For 18.4 percent of workers, speaking was seldom required, for 78.7 percent speaking was occasionally required, for 1.0 percent speaking was frequently required, and for less than 0.5 percent speaking was required constantly.

Performing work in low postures was required for 92.1 percent of light truck drivers and was not required for 7.9 percent.

The choice to sit or stand when performing critical tasks was available to 1.6 percent of light truck drivers. On average, workers spent 54.1 percent of the workday sitting and 45.9 percent of the workday standing.

Chart 3. Light truck drivers by percent of workday sitting, 2025



Source: U.S. Bureau of Labor Statistics, Occupational Requirements Survey

Table 2. Percentage of light truck drivers with physical demands, 2025

Requirement	Yes	No
Ability to choose to sit or stand for tasks	1.6	98.4
Climbing structure-related ramps or stairs	68.6	31.4
Driving	>99.5	<0.5

Source: U.S. Bureau of Labor Statistics, Occupational Requirements Survey