



School psychologists

Diagnose and implement individual or schoolwide interventions or strategies to address educational, behavioral, or developmental issues that adversely impact educational functioning in a school. May address student learning and behavioral problems and counsel students or families. May design and implement performance plans, and evaluate performance. May consult with other school-based personnel.

Cognitive and mental requirements

The qualifications that workers need to use judgment, make decisions, interact with others, and adapt to changes in jobs.

In 2021, verbal interactions were required constantly (every few minutes) for 13.1 percent of school psychologists, and were required not constantly, but more than once per hour for 81.1 percent.

Table 1. Percentage of school psychologists with cognitive and mental requirements, 2021

Requirement	Yes	No
Pace: Pause control	70.2	29.8
Interaction with general public	100.0	-
Work review: Presence of supervisor	26.3	73.7

Source: U.S. Bureau of Labor Statistics, Occupational Requirements Survey

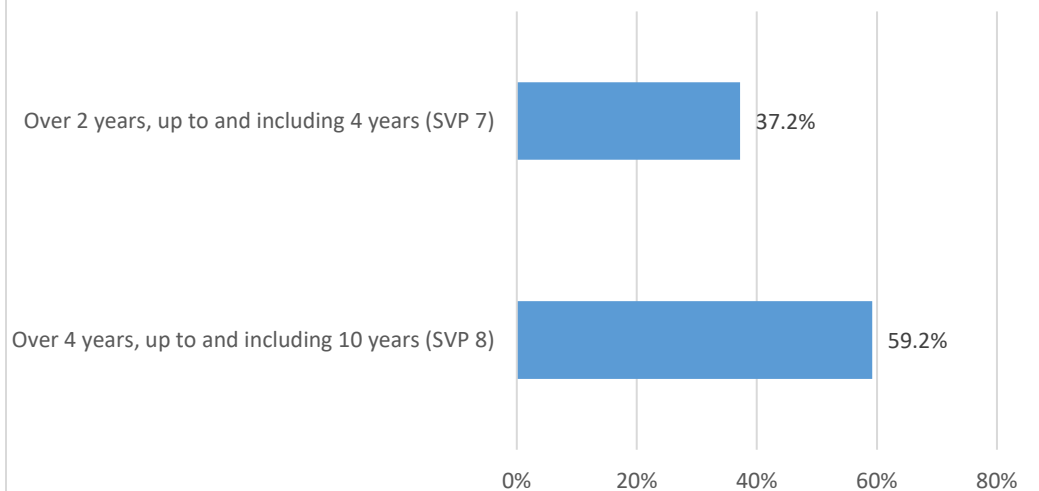
Education, training, and experience requirements

The minimum level of formal education required, credentials necessary, on-the-job training, and prior work experience necessary for average performance in jobs.

In 2021, prior work experience was required for 50.1 percent of school psychologists and on-the-job training was required for 31.1 percent.

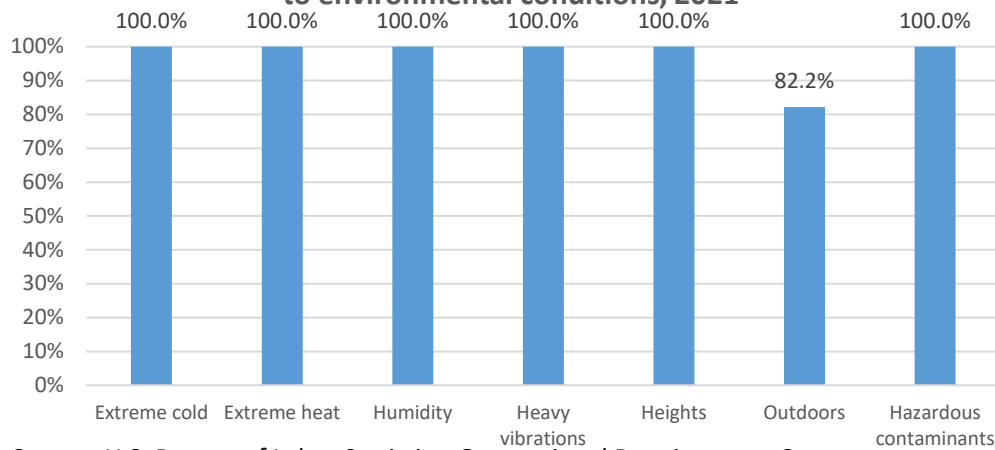
A master's degree was required for 68.6 percent of school psychologists.

Chart 1. Percentage of school psychologists by specific preparation time (SVP) level, 2021



Source: U.S. Bureau of Labor Statistics, Occupational Requirements Survey

Chart 2. Percentage of school psychologists without exposure to environmental conditions, 2021



Source: U.S. Bureau of Labor Statistics, Occupational Requirements Survey

Environmental conditions

The various tangible or concrete hazards or difficulties that are in the vicinity of where jobs' critical tasks are performed.

In 2021, a quiet noise exposure was present for 23.4 percent of school psychologists, and 76.6 percent were exposed to moderate noise. Personal protective equipment (PPE) was not used by 100.0 percent of workers to mitigate noise exposure.

Physical demands

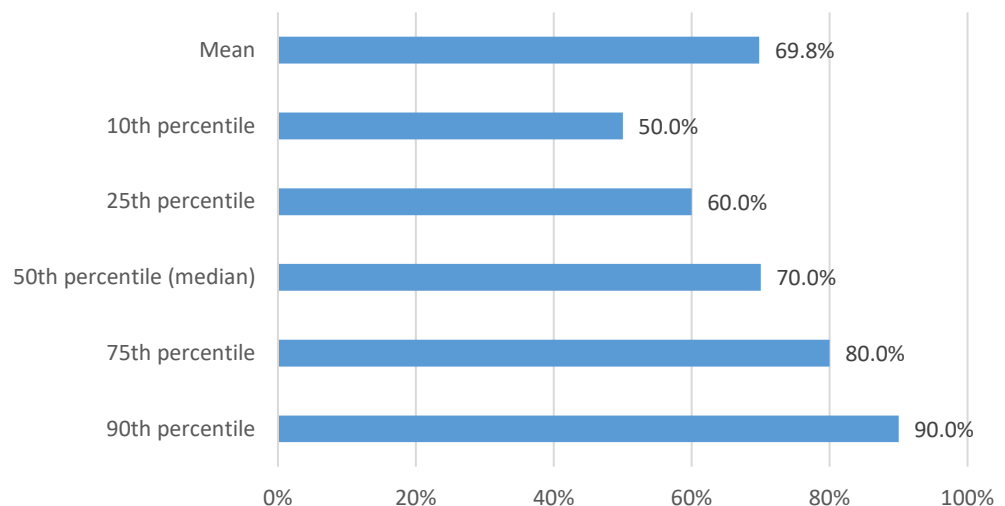
Refer to the physical activities required to perform tasks in jobs. The presence and, in some cases, duration of these activities are published.

In 2021, reaching at or below the shoulder was required for 69.8 percent of school psychologists and was not required for 30.2 percent.

Performing work in low postures was required for 30.2 percent of school psychologists and was not required for 69.8 percent.

The choice to sit or stand when performing critical tasks was available to 86.9 percent of school psychologists. On average, workers spent 69.8 percent of the workday sitting and 30.2 percent of the workday standing.

Chart 3. School psychologists by percent of workday sitting, 2021



Source: U.S. Bureau of Labor Statistics, Occupational Requirements Survey

Table 2. Percentage of school psychologists with physical demands, 2021

Requirement	Yes	No
Choice of sitting or standing	86.9	13.1
Driving	39.6	60.4
Climbing structure-related ramps or stairs	35.8	64.2

Source: U.S. Bureau of Labor Statistics, Occupational Requirements Survey