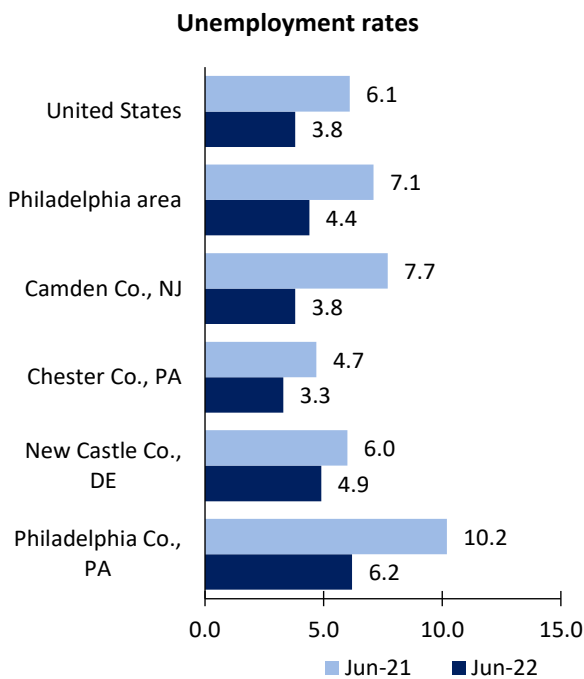


Philadelphia area Economic Summary

Updated August 04, 2022

This summary presents a sampling of economic information for the area; supplemental data are provided for regions and the nation. Subjects include **unemployment, employment, wages, prices, spending, and benefits**. All data are not seasonally adjusted and some may be subject to revision. Area definitions may differ by subject. For more area summaries and geographic definitions, see www.bls.gov/regions/economic-summaries.htm.

Unemployment rates for the nation and selected areas

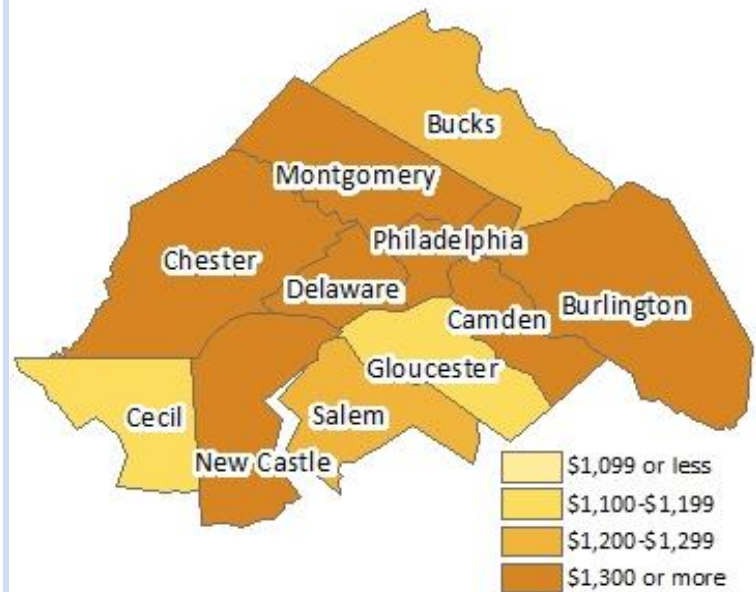


Source: U.S. BLS, Local Area Unemployment Statistics.

Average weekly wages for all industries by county

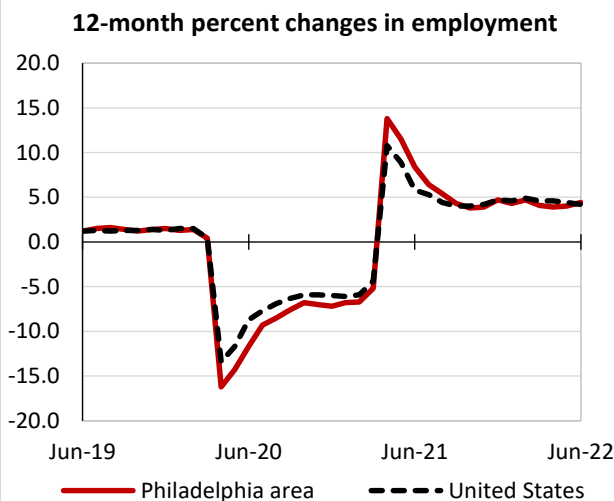
Philadelphia area, fourth quarter 2021

(U.S. = \$1,418; Area = \$1,504)



Source: U.S. BLS, Quarterly Census of Employment and Wages.

Over-the-year changes in employment on nonfarm payrolls and employment by major industry sector



Source: U.S. BLS, Current Employment Statistics.

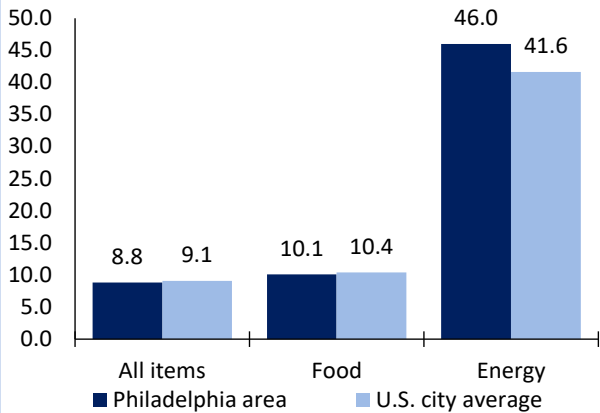
Philadelphia area employment (number in thousands)	Jun. 2022	Change from Jun. 2021 to Jun. 2022	
		Number	Percent
Total nonfarm	2,986.8	125.1	4.4
Mining, logging, and construction	124.0	3.2	2.6
Manufacturing	178.7	5.5	3.2
Trade, transportation, and utilities	546.0	27.3	5.3
Information	50.1	1.3	2.7
Financial activities	220.9	2.7	1.2
Professional and business services	498.0	23.5	5.0
Education and health services	653.2	19.8	3.1
Leisure and hospitality	268.8	32.7	13.9
Other services	118.9	6.5	5.8
Government	328.2	2.6	0.8

Source: U.S. BLS, Current Employment Statistics.



Over-the-year change in the prices paid by urban consumers for selected categories

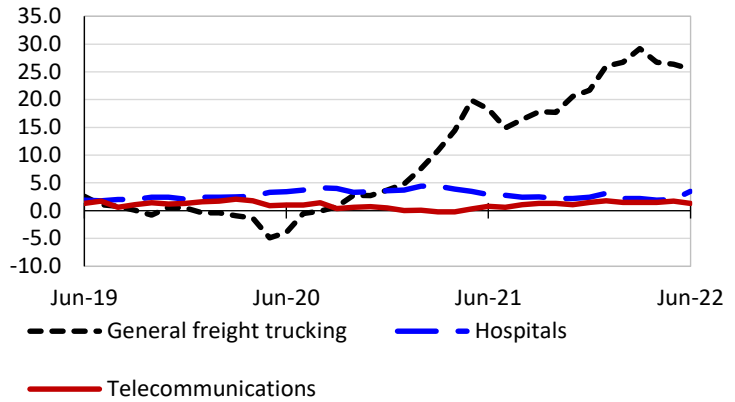
12-month percent change in CPI-U, June 2022



Source: U.S. BLS, Consumer Price Index.

Over-the-year changes in the selling prices received by producers for selected industries nationwide

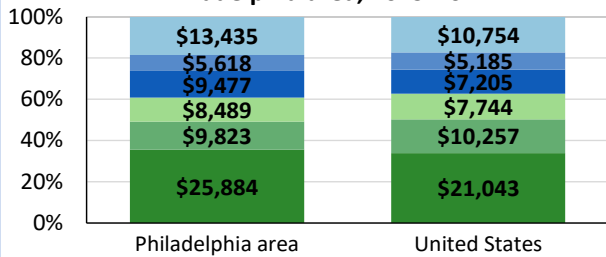
12-month percent changes in PPI



Source: U.S. BLS, Producer Price Index.

Average annual spending and percent distribution for selected categories

Average annual expenditures, United States and Philadelphia area, 2019-20



Source: U.S. BLS, Consumer Expenditure Survey.

Average hourly wages for selected occupations

Occupation	Philadelphia area	United States
All occupations	\$29.74	\$28.01
Lawyers	70.06	71.17
Chemists	48.92	42.85
Management analysts	48.44	48.33
Healthcare social workers	31.17	29.96
Brokerage clerks	29.72	27.75
Construction laborers	24.83	21.22

Source: U.S. BLS, Occupational Employment and Wage Statistics, May 2021.

Employer costs per hour worked for wages and selected employee benefits by geographic division

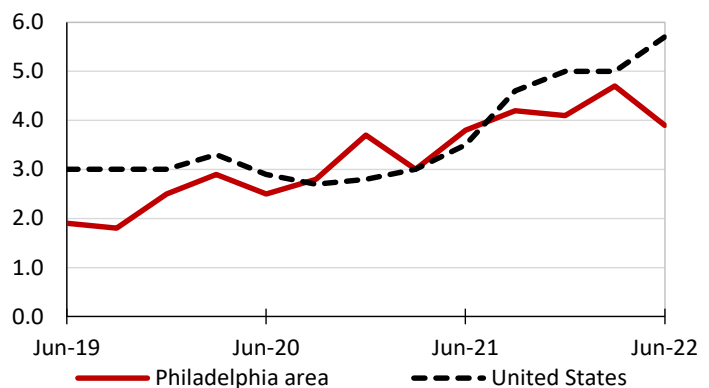
Private industry, March 2022	Middle Atlantic	United States
Total compensation	\$43.04	\$38.61
Wages and salaries	29.68	27.19
Total benefits	13.36	11.42
Paid leave	3.38	2.88
Vacation	1.69	1.47
Supplemental pay	1.50	1.37
Insurance	3.48	2.93
Retirement and savings	1.67	1.33
Legally required benefits	3.33	2.91

(1) The states that compose the Middle Atlantic census division are: NJ, NY, and PA.

Source: U.S. BLS, Employer Costs for Employee Compensation.

Over-the-year changes in wages and salaries

12-month percent changes in ECI



Source: U.S. BLS, Employment Cost Index.

