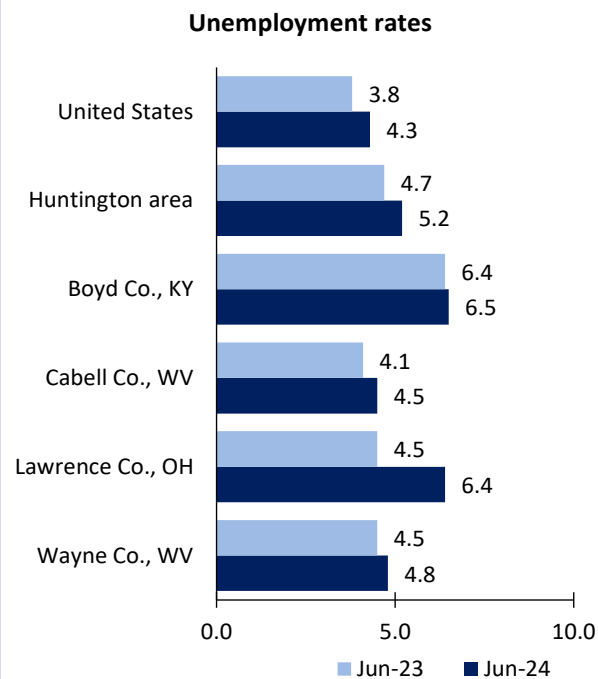


Huntington area Economic Summary

Updated August 07, 2024

This summary presents a sampling of economic information for the area; supplemental data are provided for regions and the nation. Subjects include **unemployment, employment, wages, prices, spending, and benefits**. All data are not seasonally adjusted and some may be subject to revision. Area definitions may differ by subject. For more area summaries and geographic definitions, see www.bls.gov/regions/economic-summaries.htm.

Unemployment rates for the nation and selected areas

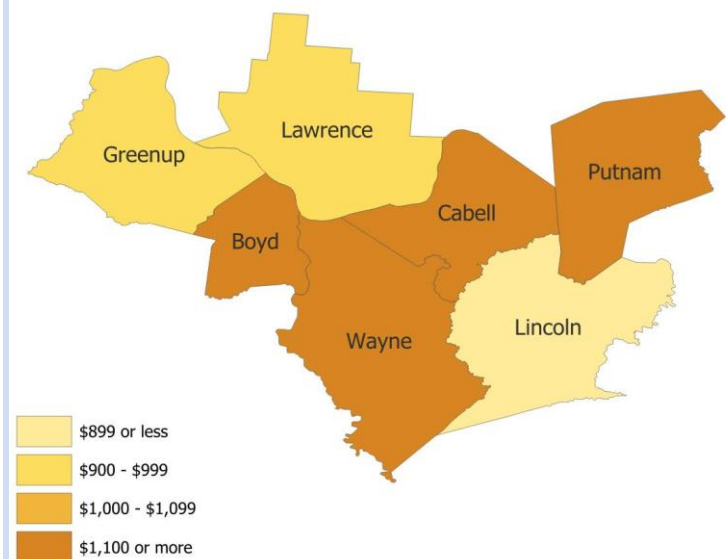


Source: U.S. BLS, Local Area Unemployment Statistics.

Average weekly wages for all industries by county

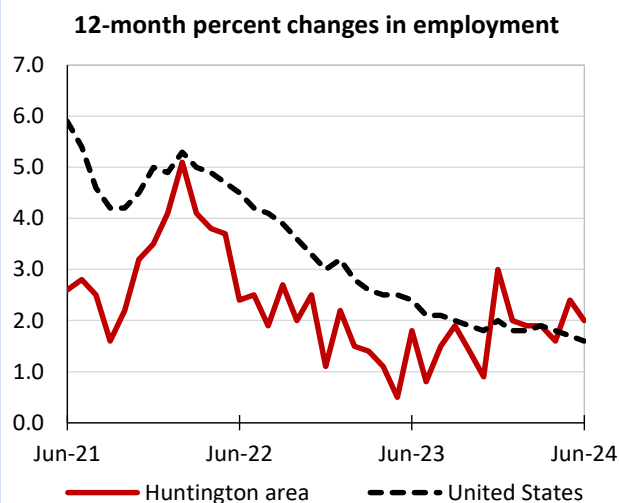
Huntington area, fourth quarter 2023

(U.S. = \$1,435; Area = \$1,108)



Source: U.S. BLS, Quarterly Census of Employment and Wages.

Over-the-year changes in employment on nonfarm payrolls and employment by major industry sector



Source: U.S. BLS, Current Employment Statistics.

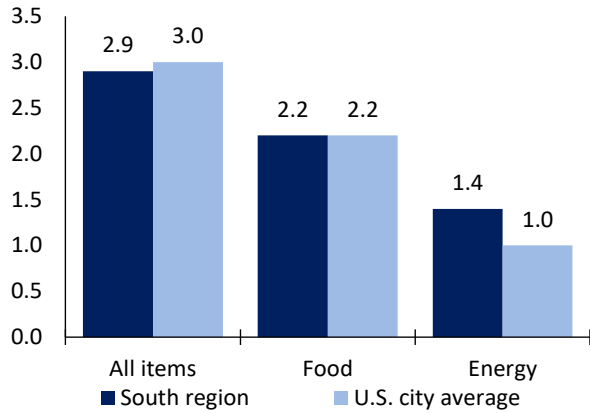
| Huntington area employment (number in thousands) | Jun. 2024 | Change from Jun. 2023 to Jun. 2024 | |
|--|-----------|------------------------------------|---------|
| | | Number | Percent |
| Total nonfarm | 136.1 | 2.7 | 2.0 |
| Mining, logging, and construction | 8.8 | 0.4 | 4.8 |
| Manufacturing | 12.2 | -0.1 | -0.8 |
| Trade, transportation, and utilities | 25.2 | 0.2 | 0.8 |
| Information | 1.2 | -0.1 | -7.7 |
| Financial activities | 4.1 | 0.1 | 2.5 |
| Professional and business services | 12.1 | -0.3 | -2.4 |
| Education and health services | 31.0 | 1.2 | 4.0 |
| Leisure and hospitality | 14.7 | 0.5 | 3.5 |
| Other services | 4.4 | 0.0 | 0.0 |
| Government | 22.4 | 0.8 | 3.7 |

Source: U.S. BLS, Current Employment Statistics.



Over-the-year change in the prices paid by urban consumers for selected categories

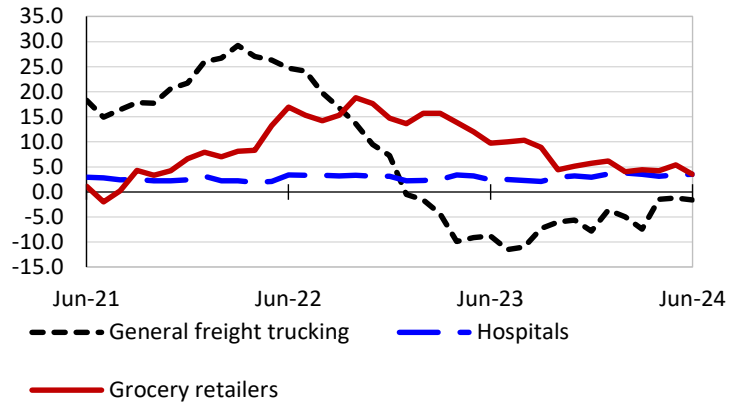
12-month percent change in CPI-U, June 2024



Source: U.S. BLS, Consumer Price Index.

Over-the-year changes in the selling prices received by producers for selected industries nationwide

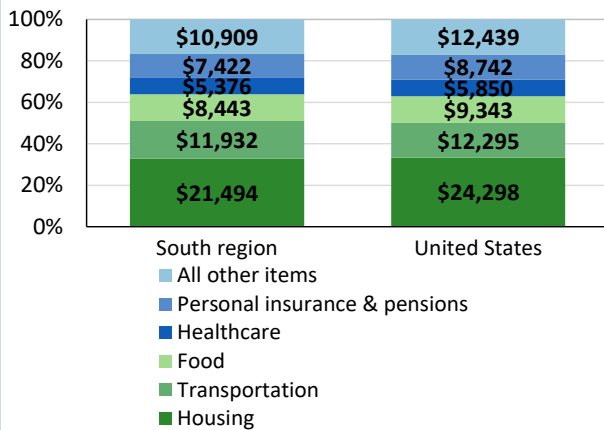
12-month percent changes in PPI



Source: U.S. BLS, Producer Price Index.

Average annual spending and percent distribution for selected categories

Average annual expenditures, United States and South region, 2022



Source: U.S. BLS, Consumer Expenditure Survey.

Average hourly wages for selected occupations

| Occupation | Huntington | United States |
|----------------------------------|------------|---------------|
| All occupations | \$24.65 | \$31.48 |
| Registered nurses | 37.58 | 45.42 |
| Carpenters | 23.70 | 29.31 |
| Customer service representatives | 18.07 | 20.92 |
| Recreation workers | 15.27 | 17.44 |
| Maids and housekeeping cleaners | 14.01 | 16.66 |
| Cashiers | 11.85 | 14.77 |

Source: U.S. BLS, Occupational Employment and Wage Statistics, May 2023.

Employer costs per hour worked for wages and selected employee benefits by geographic division

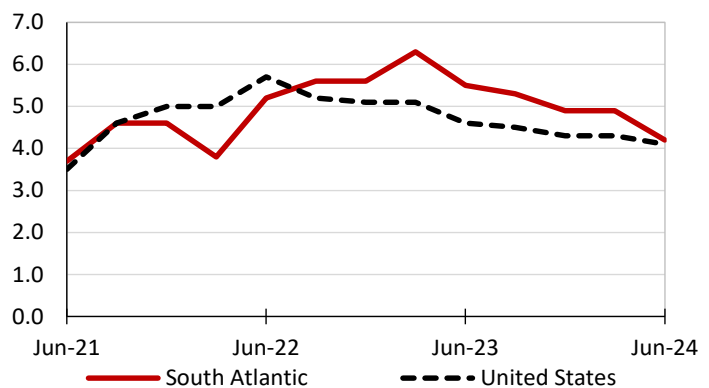
| Private industry, March 2024 | South Atlantic | United States |
|------------------------------|----------------|---------------|
| Total compensation | \$40.93 | \$43.78 |
| Wages and salaries | 29.31 | 30.76 |
| Total benefits | 11.62 | 13.02 |
| Paid leave | 3.15 | 3.31 |
| Vacation | 1.64 | 1.69 |
| Supplemental pay | 1.48 | 1.77 |
| Insurance | 2.79 | 3.20 |
| Retirement and savings | 1.26 | 1.52 |
| Legally required benefits | 2.95 | 3.21 |

(1) The states that compose the South Atlantic census division are: DE, DC, FL, GA, MD, NC, SC, VA, and WV.

Source: U.S. BLS, Employer Costs for Employee Compensation.

Over-the-year changes in wages and salaries

12-month percent changes in ECI



Source: U.S. BLS, Employment Cost Index.

