



For Release: Friday, October 13, 2017

17-1372-CHI

MIDWEST INFORMATION OFFICE: Chicago, Ill.

Technical information: (312) 353-1880 BLSInfoChicago@bls.gov www.bls.gov/regions/midwest

Media contact: (312) 353-1138

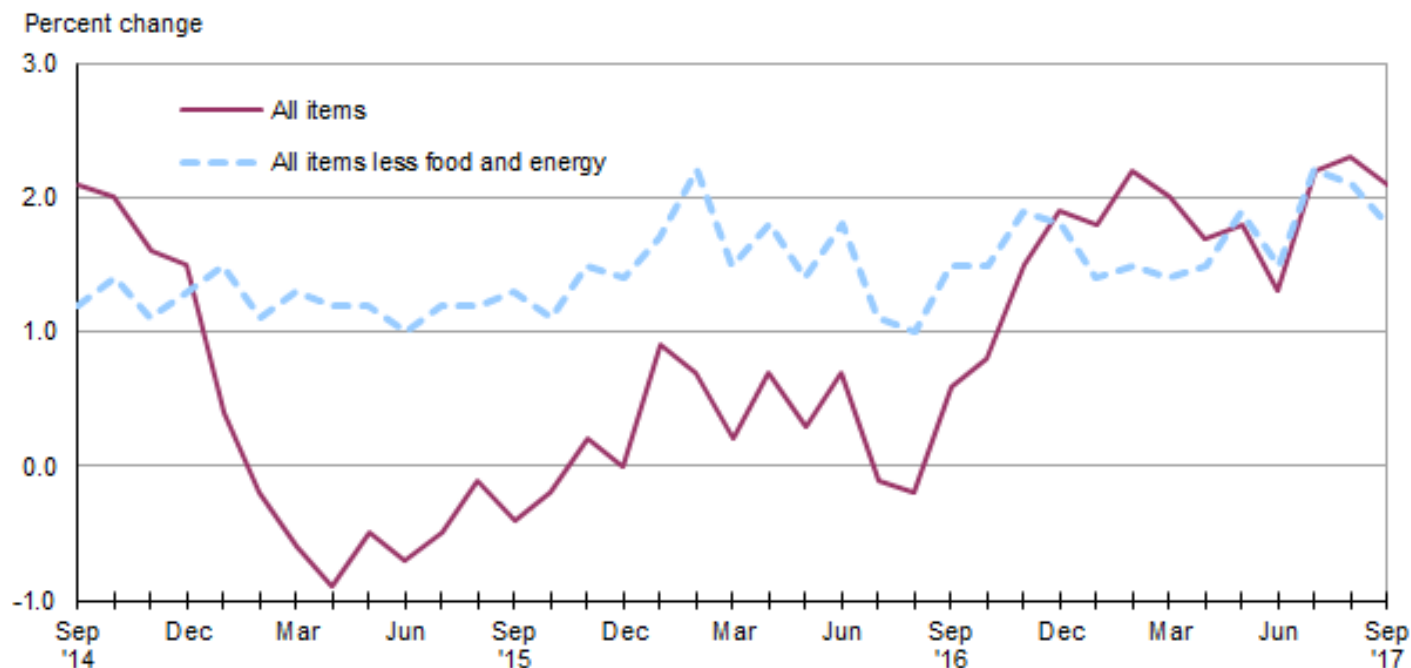
Consumer Price Index, Chicago-Gary-Kenosha — September 2017

Local prices rose 2.1 percent over the year

The Consumer Price Index for All Urban Consumers (CPI-U) in the Chicago-Gary-Kenosha area rose 0.4 percent in September, the U.S. Bureau of Labor Statistics reported today. Assistant Commissioner for Regional Operations Charlene Peiffer noted that in September the food index edged down 0.1 percent and the energy index increased 2.2 percent. The all items less food and energy index rose 0.4 percent over the month. Among the indexes within the all items less food and energy category, prices were higher for shelter and apparel. (Data in this report are not seasonally adjusted. Accordingly, month-to-month changes may reflect the impact of seasonal influences.)

Over the last 12 months, the Chicago area all items CPI-U increased 2.1 percent. (See [chart 1](#) and [table A.](#)) Over the year the food index increased 1.3 percent and energy costs rose 7.6 percent. Energy costs rose primarily due to an increase in gasoline prices. The all items less food and energy index was 1.8 percent higher over the year. (See [table 1.](#))

Chart 1. Over-the-year percent change in CPI-U, Chicago, September 2014–September 2017



Source: U.S. Bureau of Labor Statistics.

Food

Food prices edged down 0.1 percent in September. The food at home index (groceries) fell 0.4 percent, while the food away from home (restaurant, cafeteria, and vending purchases) index rose 0.3 percent. Within the food at home group, prices were lower in September for carbonated drinks, pork chops, and potatoes. In contrast, the indexes for other fresh vegetables, uncooked ground beef, and uncooked beef roasts were higher.

From September 2016 to September 2017, the food index increased 1.3 percent. Grocery prices rose 0.9 percent, while food away from home prices rose 1.9 percent over the year.

Energy

The energy index advanced 2.2 percent in September, primarily due to a 5.5-percent increase in gasoline prices. Electricity costs rose 0.2 percent over the month. In contrast, utility (piped) gas service costs fell 1.8 percent.

Over the year, the Chicago area energy index rose 7.6 percent. From September 2016 to September 2017 gasoline prices increased 11.6 percent. Costs for electricity and utility (piped) gas service were up 6.8 percent and 0.3 percent, respectively over the year.

All items less food and energy

The index for all items less food and energy rose 0.4 percent in September. Among the index's components, prices were higher for shelter (0.6 percent) and apparel (4.3 percent).

Over the year, the index for all items less food and energy increased 1.8 percent. Increases in the indexes for shelter (2.2 percent), recreation (7.6 percent), and medical care (4.2 percent) were major contributing factors.

Table A. Chicago CPI-U 1-month and 12-month percent changes, all items index, not seasonally adjusted

Month	2013		2014		2015		2016		2017	
	1-month	12-month	1-month	12-month	1-month	12-month	1-month	12-month	1-month	12-month
January.....	0.2	1.2	0.9	1.2	-0.2	0.4	0.8	0.9	0.7	1.8
February.....	1.1	2.3	0.5	0.7	0.0	-0.2	-0.2	0.7	0.1	2.2
March.....	-0.1	0.9	1.1	1.9	0.7	-0.6	0.1	0.2	-0.1	2.0
April.....	0.0	0.9	0.5	2.4	0.1	-0.9	0.6	0.7	0.4	1.7
May.....	0.5	1.5	-0.1	1.8	0.3	-0.5	0.0	0.3	0.2	1.8
June.....	0.1	1.7	0.4	2.0	0.2	-0.7	0.5	0.7	0.0	1.3
July.....	-0.2	1.7	-0.4	1.9	-0.1	-0.5	-0.8	-0.1	0.0	2.2
August.....	0.1	1.1	0.1	1.9	0.4	-0.1	0.2	-0.2	0.3	2.3
September.....	-0.2	0.7	0.0	2.1	-0.3	-0.4	0.6	0.6	0.4	2.1
October.....	-0.3	0.5	-0.4	2.0	-0.1	-0.2	0.1	0.8		
November.....	-0.3	0.6	-0.8	1.6	-0.4	0.2	0.2	1.5		
December.....	-0.3	0.5	-0.4	1.5	-0.6	0.0	-0.2	1.9		

The October 2017 Consumer Price Index for Chicago is scheduled to be released on Wednesday, November 15, 2017.

Consumer Price Index Geographic Revision for 2018

In January 2018, BLS will introduce a new geographic area sample for the Consumer Price Index (CPI). As part of the new sample, the index for this area will be renamed. The first indexes using the new structure will be published in February 2018. Additional information on the geographic revision is available at: www.bls.gov/cpi/additional-resources/geographic-revision-2018.htm.

Technical Note

The Consumer Price Index (CPI) is a measure of the average change in prices over time in a fixed market basket of goods and services. The Bureau of Labor Statistics publishes CPIs for two population groups: (1) a CPI for All Urban Consumers (CPI-U) which covers approximately 89 percent of the total population and (2) a CPI for Urban Wage Earners and Clerical Workers (CPI-W) which covers 28 percent of the total population. The CPI-U includes, in addition to wage earners and clerical workers, groups such as professional, managerial, and technical workers, the self-employed, short-term workers, the unemployed, and retirees and others not in the labor force.

The CPI is based on prices of food, clothing, shelter, and fuels, transportation fares, charges for doctors' and dentists' services, drugs, and the other goods and services that people buy for day-to-day living. Each month, prices are collected in 87 urban areas across the country from about 6,000 housing units and approximately 24,000 retail establishments--department stores, supermarkets, hospitals, filling stations, and other types of stores and service establishments. All taxes directly associated with the purchase and use of items are included in the index.

The index measures price changes from a designated reference date (1982-84) that equals 100.0. An increase of 16.5 percent, for example, is shown as 116.5. This change can also be expressed in dollars as follows: the price of a base period "market basket" of goods and services in the CPI has risen from \$10 in 1982-84 to \$11.65. For further details see the CPI home page on the Internet at www.bls.gov/cpi and the BLS Handbook of Methods, Chapter 17, The Consumer Price Index, available on the Internet at www.bls.gov/opub/hom/pdf/homch17.pdf.

In calculating the index, price changes for the various items in each location are averaged together with weights that represent their importance in the spending of the appropriate population group. Local data are then combined to obtain a U.S. city average. Because the sample size of a local area is smaller, the local area index is subject to substantially more sampling and other measurement error than the national index. In addition, local indexes are not adjusted for seasonal influences. As a result, local area indexes show greater volatility than the national index, although their long-term trends are quite similar. **Note: Area indexes do not measure differences in the level of prices between cities; they only measure the average change in prices for each area since the base period.**

The **Chicago-Gary-Kenosha, Ill.-Ind.-Wis.** consolidated area covered in this release is comprised of Cook, DeKalb, DuPage, Grundy, Kane, Kankakee, Kendall, Lake, McHenry, and Will Counties in Illinois; Lake and Porter Counties in Indiana; and Kenosha County in Wisconsin.

Information in this release will be made available to sensory impaired individuals upon request. Voice phone: (202) 691-5200; Federal Relay Service: (800) 877-8339.

Table 1. Consumer Price Index for All Urban Consumers (CPI-U): Indexes and percent changes for selected periods Chicago-Gary-Kenosha, IL-IN-WI (1982-84=100 unless otherwise noted)

Item and Group	Indexes			Percent change from-		
	Jul. 2017	Aug. 2017	Sep. 2017	Sep. 2016	Jul. 2017	Aug. 2017
Expenditure category						
All items	233.514	234.200	235.177	2.1	0.7	0.4
All items (1967=100)	697.641	699.692	702.611	-	-	-
Food and beverages	243.386	245.149	244.964	1.4	0.6	-0.1
Food	243.068	244.996	244.644	1.3	0.6	-0.1
Food at home	232.826	235.909	234.902	0.9	0.9	-0.4
Food away from home.....	252.940	253.003	253.690	1.9	0.3	0.3
Alcoholic beverages	246.352	245.675	247.956	2.4	0.7	0.9
Housing	241.360	241.825	242.995	2.1	0.7	0.5
Shelter	302.201	302.997	304.810	2.2	0.9	0.6
Rent of primary residence(1).....	321.965	322.751	324.447	3.2	0.8	0.5
Owners' equiv. rent of residences(1)(2).....	307.155	307.579	309.050	2.2	0.6	0.5
Owners' equiv. rent of primary residence(1)(2).....	307.155	307.579	309.050	2.2	0.6	0.5
Fuels and utilities.....	209.382	208.785	207.884	4.2	-0.7	-0.4
Household energy	165.919	165.293	164.349	4.1	-0.9	-0.6
Energy services(1)	169.326	168.648	167.639	4.2	-1.0	-0.6
Electricity(1).....	162.332	163.078	163.356	6.8	0.6	0.2
Utility (piped) gas service(1).....	165.876	162.964	159.971	0.3	-3.6	-1.8
Household furnishings and operations.....	90.022	90.187	90.768	-1.9	0.8	0.6
Apparel	86.214	88.344	92.127	-0.4	6.9	4.3
Transportation	180.240	180.249	182.392	2.1	1.2	1.2
Private transportation	177.533	177.959	179.771	2.4	1.3	1.0
Motor fuel	217.704	223.744	236.090	11.6	8.4	5.5
Gasoline (all types).....	215.557	221.547	233.691	11.6	8.4	5.5
Gasoline, unleaded regular(3).....	206.487	212.454	224.187	11.8	8.6	5.5
Gasoline, unleaded midgrade(3)(4).....	242.664	248.336	261.938	10.9	7.9	5.5
Gasoline, unleaded premium(3).....	242.568	248.044	260.718	10.5	7.5	5.1
Medical care	502.061	502.922	501.161	4.2	-0.2	-0.4
Recreation(5).....	116.208	115.755	115.179	7.6	-0.9	-0.5
Education and communication(5).....	142.370	143.216	143.088	-0.3	0.5	-0.1
Other goods and services	386.977	385.543	384.766	0.1	-0.6	-0.2
Commodity and service group						
All items	233.514	234.200	235.177	2.1	0.7	0.4
Commodities	165.247	166.368	167.633	1.4	1.4	0.8
Commodities less food & beverages.....	125.786	126.594	128.379	1.4	2.1	1.4
Nondurables less food & beverages	167.476	170.015	174.499	4.1	4.2	2.6
Durables	87.182	86.692	86.418	-2.2	-0.9	-0.3
Services.....	298.359	298.606	299.284	2.5	0.3	0.2
Special aggregate indexes						
All items less medical care	221.980	222.660	223.758	1.9	0.8	0.5
All items less shelter.....	210.359	211.010	211.699	2.1	0.6	0.3
Commodities less food	130.108	130.887	132.703	1.5	2.0	1.4
Nondurables	205.943	208.132	210.398	2.6	2.2	1.1
Nondurables less food.....	172.709	175.082	179.466	4.0	3.9	2.5
Services less rent of shelter(2).....	309.785	309.448	308.929	2.9	-0.3	-0.2
Services less medical care services.....	283.512	283.734	284.781	2.6	0.4	0.4
Energy	185.685	187.641	191.843	7.6	3.3	2.2
All items less energy	239.964	240.539	241.226	1.7	0.5	0.3
All items less food and energy	240.247	240.578	241.456	1.8	0.5	0.4

Note: See footnotes at end of table.

Footnotes

(1) This index series was calculated using a Laspeyres estimator. All other item stratum index series were calculated using a geometric means estimator.

(2) Index is on a December 1982=100 base.

(3) Special index based on a substantially smaller sample.

(4) Indexes on a December 1993=100 base.

(5) Indexes on a December 1997=100 base.

- Data not available.

Note: Index applies to a month as a whole, not to any specific date. Data not seasonally adjusted.