



For Release: Thursday, May 10, 2018

18-761-CHI

MIDWEST INFORMATION OFFICE: Chicago, Ill.

Technical information: (312) 353-1880 BLSInfoChicago@bls.gov www.bls.gov/regions/midwest

Media contact: (312) 353-1138

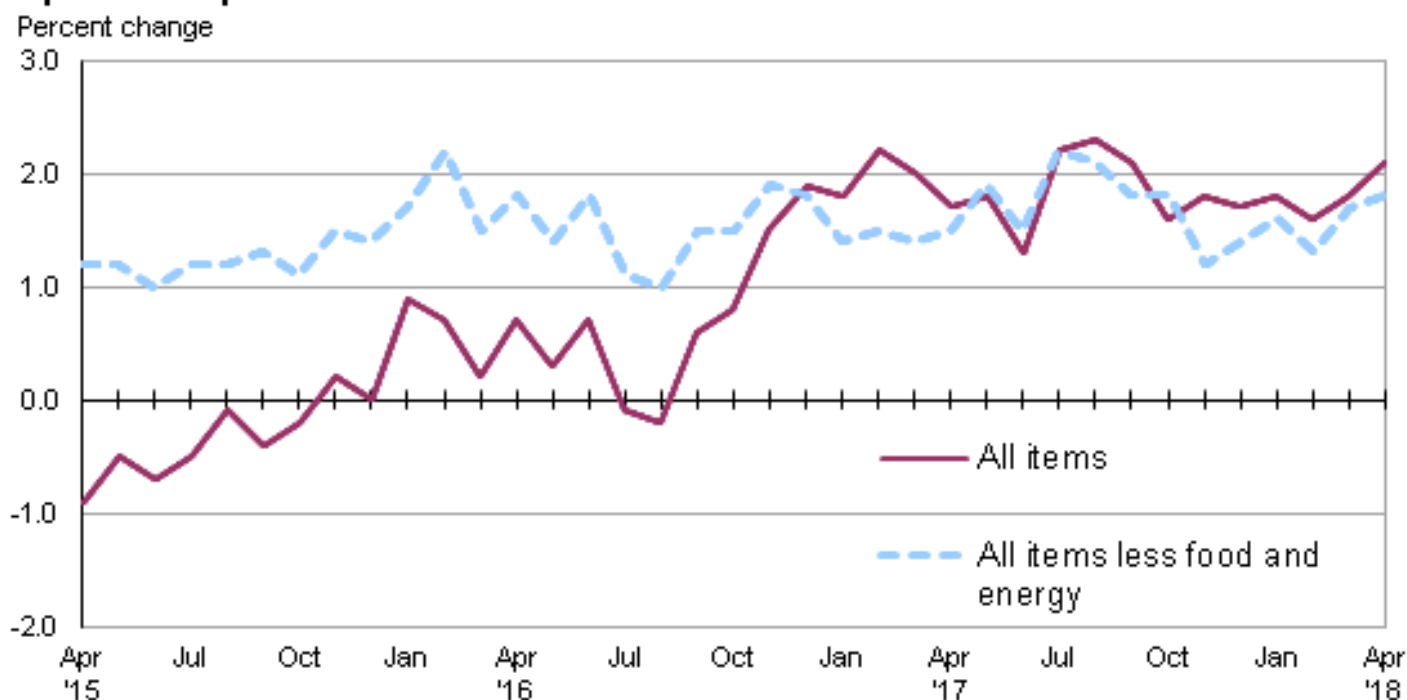
Consumer Price Index, Chicago-Naperville-Elgin — April 2018

Local prices rose 2.1 percent over the year

The Consumer Price Index for All Urban Consumers (CPI-U) in the Chicago-Naperville-Elgin area rose 0.7 percent in April, the U.S. Bureau of Labor Statistics reported today. Assistant Commissioner for Regional Operations Charlene Peiffer noted that food prices were up 0.4 percent and the energy index increased 4.0 percent in April. The all items less food and energy index increased 0.4 percent over the month. Within the all items less food and energy category, prices were higher for shelter and apparel. The index for other goods and services was lower over the month. (Data in this report are not seasonally adjusted. Accordingly, month-to-month changes may reflect the impact of seasonal influences.)

Over the last 12 months, the Chicago area all items CPI-U increased 2.1 percent. (See [chart 1](#) and [table A.](#)) Over the year, the food index and the energy index rose, increasing 1.9 percent and 5.7 percent, respectively. The rise in the energy index was primarily due to higher gasoline prices. The all items less food and energy index was 1.8 percent higher over the year. (See [table 1.](#))

Chart 1. Over-the-year percent change in CPI-U, Chicago-Naperville-Elgin, IL-IN-WI, April 2015–April 2018



Source: U.S. Bureau of Labor Statistics.

Food

Food prices were 0.4 percent higher in April. The food at home index (groceries) rose 0.7 percent, while the food away from home (restaurant, cafeteria, and vending purchases) index was unchanged. Within the food at home group, indexes were higher in April for eggs, frozen and freeze dried prepared foods, and uncooked ground beef.

From April 2017 to April 2018, the food index increased 1.9 percent. Over the year, both grocery prices and food away from home prices rose, increasing 1.6 percent and 2.1 percent, respectively.

Energy

The energy index increased 4.0 percent in April, primarily due to a 7.5-percent rise in gasoline prices. Utility (piped) gas service costs rose 1.5 percent, while electricity costs declined 1.1 percent in April.

Over the year, the Chicago area energy index rose 5.7 percent. From April 2017 to April 2018, gasoline prices rose 10.8 percent and the electricity index advanced 2.6 percent, while the index for utility (piped) gas service fell 4.3 percent.

All items less food and energy

The index for all items less food and energy rose 0.4 percent in April. Among the index's components, prices were higher for shelter (0.5 percent) and apparel (3.9 percent), but lower for other goods and services (-1.2 percent) and recreation (-0.5 percent).

Over the year, the index for all items less food and energy rose 1.8 percent. A 3.5-percent increase in the shelter index was the major contributing factor.

Table A. Chicago-Naperville-Elgin, IL-IN-WI, CPI-U 1-month and 12-month percent changes, all items index, not seasonally adjusted

Month	2014		2015		2016		2017		2018	
	1-month	12-month	1-month	12-month	1-month	12-month	1-month	12-month	1-month	12-month
January.....	0.9	1.2	-0.2	0.4	0.8	0.9	0.7	1.8	0.8	1.8
February.....	0.5	0.7	0.0	-0.2	-0.2	0.7	0.1	2.2	0.0	1.6
March.....	1.1	1.9	0.7	-0.6	0.1	0.2	-0.1	2.0	0.0	1.8
April.....	0.5	2.4	0.1	-0.9	0.6	0.7	0.4	1.7	0.7	2.1
May.....	-0.1	1.8	0.3	-0.5	0.0	0.3	0.2	1.8		
June.....	0.4	2.0	0.2	-0.7	0.5	0.7	0.0	1.3		
July.....	-0.4	1.9	-0.1	-0.5	-0.8	-0.1	0.0	2.2		
August.....	0.1	1.9	0.4	-0.1	0.2	-0.2	0.3	2.3		
September.....	0.0	2.1	-0.3	-0.4	0.6	0.6	0.4	2.1		
October.....	-0.4	2.0	-0.1	-0.2	0.1	0.8	-0.4	1.6		
November.....	-0.8	1.6	-0.4	0.2	0.2	1.5	0.4	1.8		
December.....	-0.4	1.5	-0.6	0.0	-0.2	1.9	-0.4	1.7		

The May 2018 Consumer Price Index for Chicago is scheduled to be released on Tuesday, June 12, 2018.

Technical Note

The Consumer Price Index (CPI) is a measure of the average change in prices over time in a fixed market basket of goods and services. The Bureau of Labor Statistics publishes CPIs for two population groups: (1) a CPI for All Urban Consumers (CPI-U) which covers approximately 93 percent of the total population and (2) a CPI for Urban Wage Earners and Clerical Workers (CPI-W) which covers approximately 29 percent of the

total population. The CPI-U includes, in addition to wage earners and clerical workers, groups such as professional, managerial, and technical workers, the self-employed, short-term workers, the unemployed, and retirees and others not in the labor force.

The CPI is based on prices of food, clothing, shelter, and fuels, transportation fares, charges for doctors' and dentists' services, drugs, and the other goods and services that people buy for day-to-day living. Each month, prices are collected in 75 urban areas across the country from about 5,000 housing units and approximately 22,000 retail establishments--department stores, supermarkets, hospitals, filling stations, and other types of stores and service establishments. All taxes directly associated with the purchase and use of items are included in the index.

The index measures price changes from a designated reference date (1982-84) that equals 100.0. An increase of 16.5 percent, for example, is shown as 116.5. This change can also be expressed in dollars as follows: the price of a base period "market basket" of goods and services in the CPI has risen from \$10 in 1982-84 to \$11.65. For further details see the CPI home page on the Internet at www.bls.gov/cpi and the BLS Handbook of Methods, Chapter 17, The Consumer Price Index, available on the Internet at www.bls.gov/opub/hom/pdf/homch17.pdf.

In calculating the index, price changes for the various items in each location are averaged together with weights that represent their importance in the spending of the appropriate population group. Local data are then combined to obtain a U.S. city average. Because the sample size of a local area is smaller, the local area index is subject to substantially more sampling and other measurement error than the national index. In addition, local indexes are not adjusted for seasonal influences. As a result, local area indexes show greater volatility than the national index, although their long-term trends are quite similar. **NOTE: Area indexes do not measure differences in the level of prices between cities; they only measure the average change in prices for each area since the base period.**

The **Chicago-Naperville-Elgin, Ill.-Ind.-Wis., Core Based Statistical Area** covered in this release is comprised of Cook, DeKalb, DuPage, Grundy, Kane, Kendall, Lake, McHenry, and Will Counties in Illinois; Jasper, Lake, Newton, and Porter Counties in Indiana; and Kenosha County in Wisconsin.

Information in this release will be made available to sensory impaired individuals upon request. Voice phone: (202) 691-5200; Federal Relay Service: (800) 877-8339.

Table 1. Consumer Price Index for All Urban Consumers (CPI-U): Indexes and percent changes for selected periods Chicago-Naperville-Elgin, IL-IN-WI (1982-84=100 unless otherwise noted)

Item and Group	Indexes			Percent change from-		
	Feb. 2018	Mar. 2018	Apr. 2018	Apr. 2017	Feb. 2018	Mar. 2018
Expenditure category						
All items	236.306	236.388	237.940	2.1	0.7	0.7
All items (1967=100)	705.984	706.230	710.864	-	-	-
Food and beverages	247.910	246.389	247.299	2.2	-0.2	0.4
Food	246.868	245.333	246.231	1.9	-0.3	0.4
Food at home	236.032	233.221	234.813	1.6	-0.5	0.7
Cereals and bakery products	257.868	258.379	262.073	-	1.6	1.4
Meats, poultry, fish and eggs	253.327	250.666	255.205	-	0.7	1.8
Dairy and related products	205.609	208.465	212.746	-	3.5	2.1
Fruits and vegetables	319.698	306.194	301.709	-	-5.6	-1.5
Nonalcoholic beverages and beverage materials(1)	190.684	187.205	189.862	-	-0.4	1.4
Other food at home	189.527	189.092	189.662	-	0.1	0.3
Food away from home	257.364	257.476	257.476	2.1	0.0	0.0
Alcoholic beverages	261.889	260.605	261.701	6.6	-0.1	0.4
Housing	245.310	245.805	246.937	2.9	0.7	0.5
Shelter	309.433	309.865	311.516	3.5	0.7	0.5
Rent of primary residence(2)	328.097	328.539	329.294	3.0	0.4	0.2
Owners' equiv. rent of residences(2)(3)	313.735	314.822	316.604	3.4	0.9	0.6
Owners' equiv. rent of primary residence(2)(3)	313.735	314.822	316.604	3.4	0.9	0.6
Fuels and utilities	203.600	202.021	202.511	0.5	-0.5	0.2
Household energy	161.383	158.903	158.886	-0.2	-1.5	0.0
Energy services(2)	164.559	162.063	162.010	-0.2	-1.5	0.0
Electricity(2)	163.838	159.071	157.335	2.6	-4.0	-1.1
Utility (piped) gas service(2)	152.336	153.310	155.684	-4.3	2.2	1.5
Household furnishings and operations	90.256	91.844	91.920	-0.6	1.8	0.1
Apparel	86.682	85.785	89.128	2.7	2.8	3.9
Transportation	184.120	184.853	188.765	1.5	2.5	2.1
Private transportation	180.416	181.092	185.010	1.6	2.5	2.2
New and used motor vehicles(4)	95.531	95.457	95.627	-	0.1	0.2
New vehicles(1)	172.673	172.180	172.594	-	0.0	0.2
Used cars and trucks(1)	265.439	269.682	268.349	-	1.1	-0.5
Motor fuel	236.677	239.157	256.938	10.8	8.6	7.4
Gasoline (all types)	234.174	236.672	254.381	10.8	8.6	7.5
Gasoline, unleaded regular(5)	224.821	227.343	245.126	11.2	9.0	7.8
Gasoline, unleaded midgrade(5)(6)	261.545	263.707	280.665	8.6	7.3	6.4
Gasoline, unleaded premium(5)	260.475	262.647	277.286	9.3	6.5	5.6
Motor vehicle insurance(1)	536.170	536.319	537.131	-	0.2	0.2
Medical care	497.396	497.203	499.220	1.7	0.4	0.4
Recreation(4)	114.290	113.429	112.911	-0.2	-1.2	-0.5
Education and communication(4)	143.224	143.666	143.655	0.7	0.3	0.0
Tuition, other school fees, and childcare(1) ..	1,183.808	1,183.808	1,184.870	-	0.1	0.1
Other goods and services	390.499	395.090	390.309	1.3	0.0	-1.2
Commodity and service group						
All items	236.306	236.388	237.940	2.1	0.7	0.7
Commodities	166.612	166.674	168.517	1.6	1.1	1.1
Commodities less food and beverages	125.952	126.540	128.549	1.1	2.1	1.6
Nondurables less food and beverages	169.940	170.581	175.689	3.7	3.4	3.0
Durables	85.717	86.223	85.939	-2.4	0.3	-0.3
Services	302.528	302.629	303.876	2.4	0.4	0.4

Note: See footnotes at end of table.

Table 1. Consumer Price Index for All Urban Consumers (CPI-U): Indexes and percent changes for selected periods Chicago-Naperville-Elgin, IL-IN-WI (1982-84=100 unless otherwise noted) - Continued

Item and Group	Indexes			Percent change from-		
	Feb. 2018	Mar. 2018	Apr. 2018	Apr. 2017	Feb. 2018	Mar. 2018
Special aggregate indexes						
All items less medical care	225.104	225.198	226.731	2.1	0.7	0.7
All items less shelter.....	211.617	211.577	213.099	1.4	0.7	0.7
Commodities less food	130.617	131.178	133.200	1.3	2.0	1.5
Nondurables	209.363	209.046	212.389	2.9	1.4	1.6
Nondurables less food.....	175.837	176.399	181.380	3.9	3.2	2.8
Services less rent of shelter(3).....	310.848	310.595	311.456	1.1	0.2	0.3
Services less medical care services.....	287.988	288.154	289.384	2.6	0.5	0.4
Energy	190.434	190.130	197.745	5.7	3.8	4.0
All items less energy	242.603	242.722	243.712	1.8	0.5	0.4
All items less food and energy	242.688	243.075	244.083	1.8	0.6	0.4

Footnotes

(1) Index on a December 1977=100 base.

(2) This index series was calculated using a Laspeyres estimator. All other item stratum index series were calculated using a geometric means estimator.

(3) Index on a December 1982=100 base.

(4) Indexes on a December 1997=100 base.

(5) Special index based on a substantially smaller sample.

(6) Index on a December 1993=100 base.

- Data not available.

Note: Index applies to a month as a whole, not to any specific date. Data not seasonally adjusted.