



For Release: Tuesday, June 12, 2018

18-930-CHI

MIDWEST INFORMATION OFFICE: Chicago, Ill.

Technical information: (312) 353-1880 BLSInfoChicago@bls.gov www.bls.gov/regions/midwest

Media contact: (312) 353-1138

ERRATA

BLS identified errors in average price data for natural gas for Chicago from May 2018–July 2018. For more information on errors and correction plans, please visit: <https://www.bls.gov/bls/errata/cpi-errata-08082018.htm>

Consumer Price Index, Chicago-Naperville-Elgin — May 2018

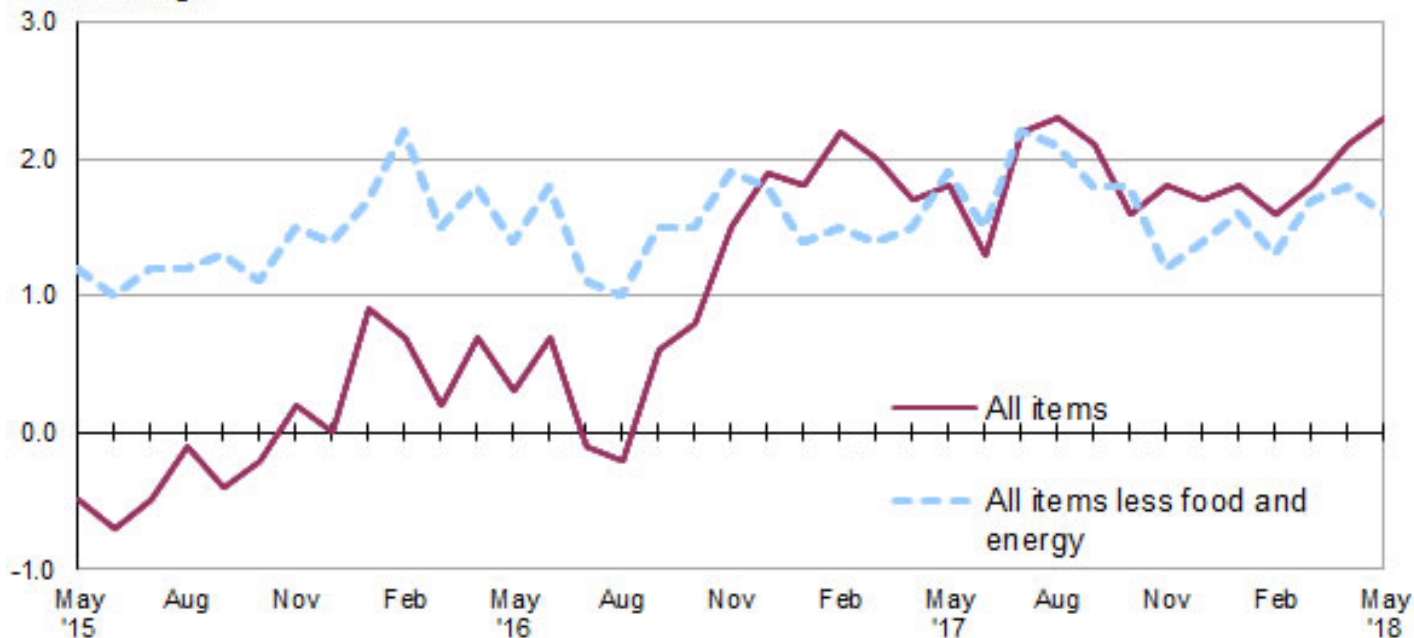
Local prices up 2.3 percent over the year

The Consumer Price Index for All Urban Consumers (CPI-U) in the Chicago-Naperville-Elgin area rose 0.4 percent in May, the U.S. Bureau of Labor Statistics reported today. Assistant Commissioner for Regional Operations Charlene Peiffer noted that the energy index increased 4.9 percent while food prices were unchanged in May. The all items less food and energy index edged up 0.1 percent over the month. Within the all items less food and energy category, prices were higher for shelter and medical care. The apparel index was lower over the month. (Data in this report are not seasonally adjusted. Accordingly, month-to-month changes may reflect the impact of seasonal influences.)

Over the last 12 months, the Chicago area all items CPI-U increased 2.3 percent. (See [chart 1](#) and [table A](#).) Over the year, the energy index rose 13.2 percent. The rise in the energy index was primarily due to higher gasoline prices. The food index and the all items less food and energy index were up 1.0 percent and 1.6 percent, respectively, over the year. (See [table 1](#).)

Chart 1. Over-the-year percent change in CPI-U, Chicago-Naperville-Elgin, IL-IN-WI, May 2015–May 2018

Percent change



Source: U.S. Bureau of Labor Statistics.

Food

Food prices were unchanged in May. The food at home index (groceries) fell 0.9 percent, while the food away from home (restaurant, cafeteria, and vending purchases) index increased 1.2 percent. Within the food at home group, indexes were higher in May for citrus fruits, lettuce, and pork chops. Prices were lower for frozen fruits and vegetables and tomatoes.

From May 2017 to May 2018, the food index increased 1.0 percent. Over the year, costs for food away from home rose 3.1 percent. Grocery prices were 0.7 percent lower.

Energy

The energy index increased 4.9 percent in May, primarily due to a 7.9-percent rise in gasoline prices. Utility (piped) gas service costs rose 1.9 percent, and electricity costs increased 0.6 percent in May.

Over the year, the Chicago area energy index rose 13.2 percent. From May 2017 to May 2018, gasoline prices rose 25.3 percent, and the electricity index was 3.8 percent higher. The index for utility (piped) gas service fell 4.1 percent.

All items less food and energy

The index for all items less food and energy edged up 0.1 percent in May. Among the index's components, prices were higher for shelter (0.6 percent) and medical care (1.0 percent) but lower for apparel (-6.6 percent).

Over the year, the index for all items less food and energy rose 1.6 percent. A 3.6-percent increase in the index for owners' equivalent rent of primary residence was the major contributing factor.

Table A. Chicago-Naperville-Elgin, IL-IN-WI, CPI-U 1-month and 12-month percent changes, all items index, not seasonally adjusted

Month	2014		2015		2016		2017		2018	
	1-month	12-month	1-month	12-month	1-month	12-month	1-month	12-month	1-month	12-month
January.....	0.9	1.2	-0.2	0.4	0.8	0.9	0.7	1.8	0.8	1.8
February.....	0.5	0.7	0.0	-0.2	-0.2	0.7	0.1	2.2	0.0	1.6
March.....	1.1	1.9	0.7	-0.6	0.1	0.2	-0.1	2.0	0.0	1.8
April.....	0.5	2.4	0.1	-0.9	0.6	0.7	0.4	1.7	0.7	2.1
May.....	-0.1	1.8	0.3	-0.5	0.0	0.3	0.2	1.8	0.4	2.3
June.....	0.4	2.0	0.2	-0.7	0.5	0.7	0.0	1.3		
July.....	-0.4	1.9	-0.1	-0.5	-0.8	-0.1	0.0	2.2		
August.....	0.1	1.9	0.4	-0.1	0.2	-0.2	0.3	2.3		
September.....	0.0	2.1	-0.3	-0.4	0.6	0.6	0.4	2.1		
October.....	-0.4	2.0	-0.1	-0.2	0.1	0.8	-0.4	1.6		
November.....	-0.8	1.6	-0.4	0.2	0.2	1.5	0.4	1.8		
December.....	-0.4	1.5	-0.6	0.0	-0.2	1.9	-0.4	1.7		

The June 2018 Consumer Price Index for Chicago is scheduled to be released on Thursday, July 12, 2018.

Technical Note

The Consumer Price Index (CPI) is a measure of the average change in prices over time in a fixed market basket of goods and services. The Bureau of Labor Statistics publishes CPIs for two population groups: (1) a CPI for All Urban Consumers (CPI-U) which covers approximately 93 percent of the total population and (2) a CPI for Urban Wage Earners and Clerical Workers (CPI-W) which covers approximately 29 percent of the total population. The CPI-U includes, in addition to wage earners and clerical workers, groups such as professional, managerial, and technical workers, the self-employed, short-term workers, the unemployed, and retirees and others not in the labor force.

The CPI is based on prices of food, clothing, shelter, and fuels, transportation fares, charges for doctors' and dentists' services, drugs, and the other goods and services that people buy for day-to-day living. Each month, prices are collected in 75 urban areas across the country from about 5,000 housing units and approximately 22,000 retail establishments--department stores, supermarkets, hospitals, filling stations, and other types of stores and service establishments. All taxes directly associated with the purchase and use of items are included in the index.

The index measures price changes from a designated reference date (1982-84) that equals 100.0. An increase of 16.5 percent, for example, is shown as 116.5. This change can also be expressed in dollars as follows: the price of a base period "market basket" of goods and services in the CPI has risen from \$10 in 1982-84 to \$11.65. For further details see the CPI home page on the Internet at www.bls.gov/cpi and the BLS Handbook of Methods, Chapter 17, The Consumer Price Index, available on the Internet at www.bls.gov/opub/hom/pdf/homch17.pdf.

In calculating the index, price changes for the various items in each location are averaged together with weights that represent their importance in the spending of the appropriate population group. Local data are then combined to obtain a U.S. city average. Because the sample size of a local area is smaller, the local area index is subject to substantially more sampling and other measurement error than the national index. In addition, local indexes are not adjusted for seasonal influences. As a result, local area indexes show greater

volatility than the national index, although their long-term trends are quite similar. **NOTE: Area indexes do not measure differences in the level of prices between cities; they only measure the average change in prices for each area since the base period.**

The **Chicago-Naperville-Elgin, Ill.-Ind.-Wis., Core Based Statistical Area** covered in this release is comprised of Cook, DeKalb, DuPage, Grundy, Kane, Kendall, Lake, McHenry, and Will Counties in Illinois; Jasper, Lake, Newton, and Porter Counties in Indiana; and Kenosha County in Wisconsin.

Information in this release will be made available to sensory impaired individuals upon request. Voice phone: (202) 691-5200; Federal Relay Service: (800) 877-8339.

Table 1. Consumer Price Index for All Urban Consumers (CPI-U): Indexes and percent changes for selected periods Chicago-Naperville-Elgin, IL-IN-WI (1982-84=100 unless otherwise noted)

Item and Group	Indexes			Percent change from-		
	Mar. 2018	Apr. 2018	May 2018	May 2017	Mar. 2018	Apr. 2018
Expenditure category						
All items	236.388	237.940	238.910	2.3	1.1	0.4
All items (1967=100)	706.230	710.864	713.762	-	-	-
Food and beverages	246.389	247.299	247.201	1.3	0.3	0.0
Food	245.333	246.231	246.349	1.0	0.4	0.0
Food at home	233.221	234.813	232.597	-0.7	-0.3	-0.9
Cereals and bakery products	258.379	262.073	258.122	-	-0.1	-1.5
Meats, poultry, fish and eggs	250.666	255.205	251.629	-	0.4	-1.4
Dairy and related products	208.465	212.746	207.717	-	-0.4	-2.4
Fruits and vegetables	306.194	301.709	303.282	-	-1.0	0.5
Nonalcoholic beverages and beverage materials(1)	187.205	189.862	186.289	-	-0.5	-1.9
Other food at home	189.092	189.662	188.707	-	-0.2	-0.5
Food away from home	257.476	257.476	260.567	3.1	1.2	1.2
Alcoholic beverages	260.605	261.701	258.163	5.3	-0.9	-1.4
Housing	245.805	246.937	248.217	2.7	1.0	0.5
Shelter	309.865	311.516	313.371	3.4	1.1	0.6
Rent of primary residence(2)	328.539	329.294	329.299	2.9	0.2	0.0
Owners' equiv. rent of residences(2)(3)	314.822	316.604	317.477	3.6	0.8	0.3
Owners' equiv. rent of primary residence(2)(3)	314.822	316.604	317.477	3.6	0.8	0.3
Fuels and utilities	202.021	202.511	205.145	1.1	1.5	1.3
Household energy	158.903	158.886	160.711	0.6	1.1	1.1
Energy services(2)	162.063	162.010	163.875	0.6	1.1	1.2
Electricity(2)	159.071	157.335	158.295	3.8	-0.5	0.6
Utility (piped) gas service(2)	153.310	155.684	158.703	-4.1	3.5	1.9
Household furnishings and operations	91.844	91.920	91.061	-1.7	-0.9	-0.9
Apparel	85.785	89.128	83.216	-3.4	-3.0	-6.6
Transportation	184.853	188.765	192.761	4.8	4.3	2.1
Private transportation	181.092	185.010	188.742	4.9	4.2	2.0
New and used motor vehicles(4)	95.457	95.627	95.496	-	0.0	-0.1
New vehicles(1)	172.180	172.594	171.135	-	-0.6	-0.8
Used cars and trucks(1)	269.682	268.349	266.244	-	-1.3	-0.8
Motor fuel	239.157	256.938	277.250	25.2	15.9	7.9
Gasoline (all types)	236.672	254.381	274.555	25.3	16.0	7.9
Gasoline, unleaded regular(5)	227.343	245.126	264.978	26.2	16.6	8.1
Gasoline, unleaded midgrade(5)(6)	263.707	280.665	300.597	21.5	14.0	7.1
Gasoline, unleaded premium(5)	262.647	277.286	294.909	19.9	12.3	6.4
Motor vehicle insurance(1)	536.319	537.131	532.316	-	-0.7	-0.9
Medical care	497.203	499.220	504.205	2.2	1.4	1.0
Recreation(4)	113.429	112.911	112.227	1.0	-1.1	-0.6
Education and communication(4)	143.666	143.655	143.566	0.5	-0.1	-0.1
Tuition, other school fees, and childcare(1) ..	1,183.808	1,184.870	1,184.870	-	0.1	0.0
Other goods and services	395.090	390.309	394.393	2.4	-0.2	1.0
Commodity and service group						
All items	236.388	237.940	238.910	2.3	1.1	0.4
Commodities	166.674	168.517	168.856	2.0	1.3	0.2
Commodities less food and beverages	126.540	128.549	129.008	2.4	2.0	0.4
Nondurables less food and beverages	170.581	175.689	177.888	7.0	4.3	1.3
Durables	86.223	85.939	85.162	-3.6	-1.2	-0.9
Services	302.629	303.876	305.458	2.5	0.9	0.5

Note: See footnotes at end of table.

Table 1. Consumer Price Index for All Urban Consumers (CPI-U): Indexes and percent changes for selected periods Chicago-Naperville-Elgin, IL-IN-WI (1982-84=100 unless otherwise noted) - Continued

Item and Group	Indexes			Percent change from-		
	Mar. 2018	Apr. 2018	May 2018	May 2017	Mar. 2018	Apr. 2018
Special aggregate indexes						
All items less medical care	225.198	226.731	227.525	2.4	1.0	0.4
All items less shelter.....	211.577	213.099	213.764	1.8	1.0	0.3
Commodities less food	131.178	133.200	133.586	2.5	1.8	0.3
Nondurables	209.046	212.389	213.609	3.9	2.2	0.6
Nondurables less food.....	176.399	181.380	183.345	6.9	3.9	1.1
Services less rent of shelter(3).....	310.595	311.456	312.808	1.6	0.7	0.4
Services less medical care services.....	288.154	289.384	291.039	2.9	1.0	0.6
Energy	190.130	197.745	207.460	13.2	9.1	4.9
All items less energy	242.722	243.712	243.862	1.6	0.5	0.1
All items less food and energy	243.075	244.083	244.239	1.6	0.5	0.1

Footnotes

(1) Index on a December 1977=100 base.

(2) This index series was calculated using a Laspeyres estimator. All other item stratum index series were calculated using a geometric means estimator.

(3) Index on a December 1982=100 base.

(4) Indexes on a December 1997=100 base.

(5) Special index based on a substantially smaller sample.

(6) Index on a December 1993=100 base.

- Data not available.

Note: Index applies to a month as a whole, not to any specific date. Data not seasonally adjusted.