



For Release: Wednesday, November 14, 2018

18-1768-CHI

MIDWEST INFORMATION OFFICE: Chicago, Ill.

Technical information: (312) 353-1880 BLSInfoChicago@bls.gov www.bls.gov/regions/midwest

Media contact: (312) 353-1138

Consumer Price Index, Chicago-Naperville-Elgin — October 2018

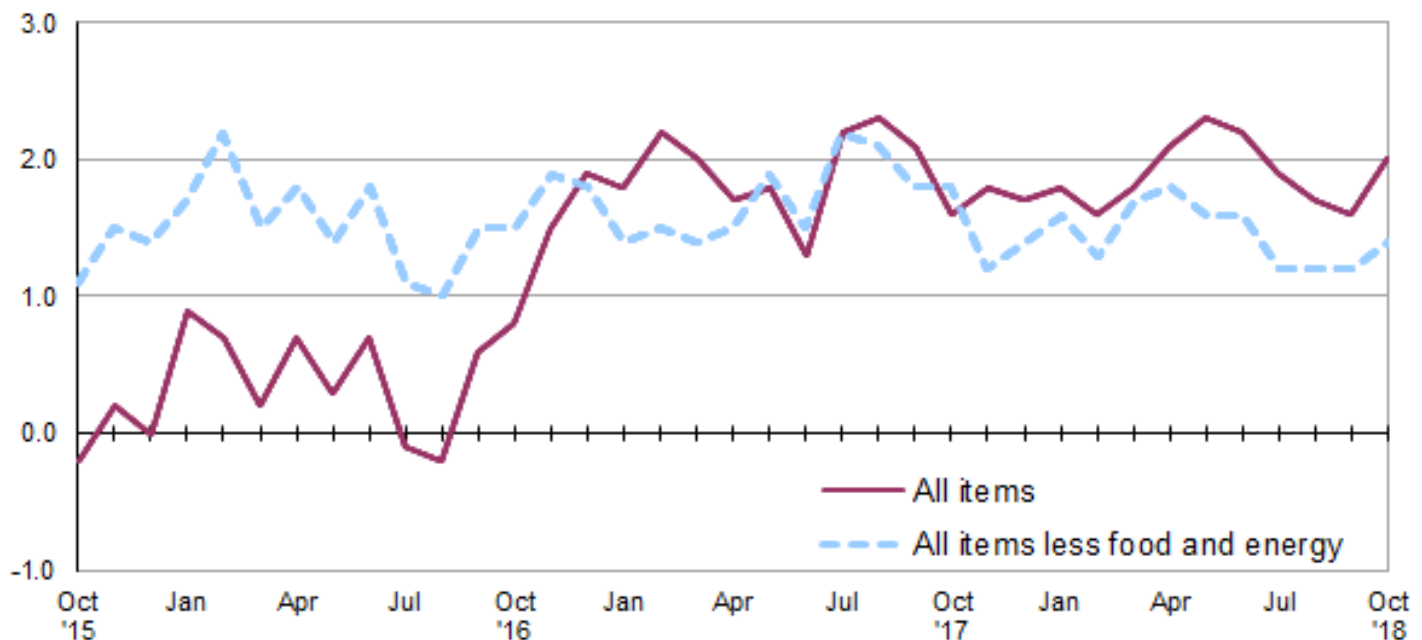
Local prices up 2.0 percent over the year

The Consumer Price Index for All Urban Consumers (CPI-U) in the Chicago-Naperville-Elgin area was unchanged in October, the U.S. Bureau of Labor Statistics reported today. Assistant Commissioner for Regional Operations Charlene Peiffer noted that food prices edged down 0.1 percent and the energy index decreased 2.6 percent in October. The all items less food and energy index increased 0.2 percent over the month. Within the all items less food and energy category, prices were higher for shelter and motor vehicle insurance over the month, but prices fell for recreation and household furnishings and operations. (Data in this report are not seasonally adjusted. Accordingly, month-to-month changes may reflect the impact of seasonal influences.)

Over the last 12 months, the Chicago area all items CPI-U increased 2.0 percent. (See [chart 1](#) and [table A](#).) Over the year, the energy index rose 9.8 percent. The rise in the energy index was primarily due to higher gasoline and electricity prices. The food index and the all items less food and energy index rose 1.8 percent and 1.4 percent, respectively, over the year. (See [table 1](#).)

Chart 1. Over-the-year percent change in CPI-U, Chicago-Naperville-Elgin, IL-IN-WI, October 2015–October 2018

Percent change



Source: U.S. Bureau of Labor Statistics.

Food

Food prices were down a slight 0.1 percent in October. Of the two components within the food index, prices for food at home (groceries) declined 0.2 percent while prices for food away from home (restaurant, cafeteria, and vending purchases) were unchanged. Within the food at home group, indexes were higher in October for potatoes and other pork including roasts, steaks, and ribs. Prices were lower for citrus fruits and milk.

From October 2017 to October 2018, the food index increased 1.8 percent. Over the year, costs for food away from home rose 4.0 percent, while grocery prices edged down 0.1 percent.

Energy

The energy index decreased 2.6 percent in October. Prices declined for gasoline (-2.9 percent), utility (piped) gas service (-4.2 percent), and electricity (-1.1 percent).

Over the year, the Chicago area energy index rose 9.8 percent. From October 2017 to October 2018, gasoline prices and electricity prices rose 10.8 percent and 14.0 percent, respectively. The utility (piped) gas service index declined 1.6 percent over the year.

All items less food and energy

The index for all items less food and energy increased 0.2 percent in October. Among the index's components, prices were higher for shelter (0.3 percent) and motor vehicle insurance (2.0 percent). Prices were lower for recreation and household furnishings and operations, each down 1.3 percent.

Over the year, the index for all items less food and energy rose 1.4 percent. A 3.4-percent increase in the index for shelter was the major contributing factor.

Table A. Chicago-Naperville-Elgin, IL-IN-WI, CPI-U 1-month and 12-month percent changes, all items index, not seasonally adjusted

| Month | 2014 | | 2015 | | 2016 | | 2017 | | 2018 | |
|----------------|---------|----------|---------|----------|---------|----------|---------|----------|---------|----------|
| | 1-month | 12-month | 1-month | 12-month | 1-month | 12-month | 1-month | 12-month | 1-month | 12-month |
| January..... | 0.9 | 1.2 | -0.2 | 0.4 | 0.8 | 0.9 | 0.7 | 1.8 | 0.8 | 1.8 |
| February..... | 0.5 | 0.7 | 0.0 | -0.2 | -0.2 | 0.7 | 0.1 | 2.2 | 0.0 | 1.6 |
| March..... | 1.1 | 1.9 | 0.7 | -0.6 | 0.1 | 0.2 | -0.1 | 2.0 | 0.0 | 1.8 |
| April..... | 0.5 | 2.4 | 0.1 | -0.9 | 0.6 | 0.7 | 0.4 | 1.7 | 0.7 | 2.1 |
| May..... | -0.1 | 1.8 | 0.3 | -0.5 | 0.0 | 0.3 | 0.2 | 1.8 | 0.4 | 2.3 |
| June..... | 0.4 | 2.0 | 0.2 | -0.7 | 0.5 | 0.7 | 0.0 | 1.3 | -0.2 | 2.2 |
| July..... | -0.4 | 1.9 | -0.1 | -0.5 | -0.8 | -0.1 | 0.0 | 2.2 | -0.3 | 1.9 |
| August..... | 0.1 | 1.9 | 0.4 | -0.1 | 0.2 | -0.2 | 0.3 | 2.3 | 0.1 | 1.7 |
| September..... | 0.0 | 2.1 | -0.3 | -0.4 | 0.6 | 0.6 | 0.4 | 2.1 | 0.4 | 1.6 |
| October..... | -0.4 | 2.0 | -0.1 | -0.2 | 0.1 | 0.8 | -0.4 | 1.6 | 0.0 | 2.0 |
| November..... | -0.8 | 1.6 | -0.4 | 0.2 | 0.2 | 1.5 | 0.4 | 1.8 | | |
| December..... | -0.4 | 1.5 | -0.6 | 0.0 | -0.2 | 1.9 | -0.4 | 1.7 | | |

The November 2018 Consumer Price Index for Chicago is scheduled to be released on Wednesday, December 12, 2018.

Technical Note

The Consumer Price Index (CPI) is a measure of the average change in prices over time in a fixed market basket of goods and services. The Bureau of Labor Statistics publishes CPIs for two population groups: (1) a CPI for All Urban Consumers (CPI-U) which covers approximately 93 percent of the total population and (2) a CPI for Urban Wage Earners and Clerical Workers (CPI-W) which covers approximately 29 percent of the total population. The CPI-U includes, in addition to wage earners and clerical workers, groups such as professional, managerial, and technical workers, the self-employed, short-term workers, the unemployed, and retirees and others not in the labor force.

The CPI is based on prices of food, clothing, shelter, and fuels, transportation fares, charges for doctors' and dentists' services, drugs, and the other goods and services that people buy for day-to-day living. Each month, prices are collected in 75 urban areas across the country from about 5,000 housing units and approximately 22,000 retail establishments--department stores, supermarkets, hospitals, filling stations, and other types of stores and service establishments. All taxes directly associated with the purchase and use of items are included in the index.

The index measures price changes from a designated reference date (1982-84) that equals 100.0. An increase of 16.5 percent, for example, is shown as 116.5. This change can also be expressed in dollars as follows: the price of a base period "market basket" of goods and services in the CPI has risen from \$10 in 1982-84 to \$11.65. For further details see the CPI home page on the Internet at www.bls.gov/cpi and the BLS Handbook of Methods, Chapter 17, The Consumer Price Index, available on the Internet at www.bls.gov/opub/hom/pdf/homch17.pdf.

In calculating the index, price changes for the various items in each location are averaged together with weights that represent their importance in the spending of the appropriate population group. Local data are then combined to obtain a U.S. city average. Because the sample size of a local area is smaller, the local area index is subject to substantially more sampling and other measurement error than the national index. In addition, local indexes are not adjusted for seasonal influences. As a result, local area indexes show greater

volatility than the national index, although their long-term trends are quite similar. **NOTE: Area indexes do not measure differences in the level of prices between cities; they only measure the average change in prices for each area since the base period.**

The **Chicago-Naperville-Elgin, Ill.-Ind.-Wis., Core Based Statistical Area** covered in this release is comprised of Cook, DeKalb, DuPage, Grundy, Kane, Kendall, Lake, McHenry, and Will Counties in Illinois; Jasper, Lake, Newton, and Porter Counties in Indiana; and Kenosha County in Wisconsin.

Information in this release will be made available to sensory impaired individuals upon request. Voice phone: (202) 691-5200; Federal Relay Service: (800) 877-8339.

Table 1. Consumer Price Index for All Urban Consumers (CPI-U): Indexes and percent changes for selected periods Chicago-Naperville-Elgin, IL-IN-WI (1982-84=100 unless otherwise noted)

| Item and Group | Indexes | | | Percent change from- | | |
|--|--------------|--------------|--------------|----------------------|--------------|--------------|
| | Aug. 2018 | Sep. 2018 | Oct. 2018 | Oct. 2017 | Aug. 2018 | Sep. 2018 |
| Expenditure category | | | | | | |
| All items | 238.098 | 238.957 | 238.892 | 2.0 | 0.3 | 0.0 |
| All items (1967=100) | 711.338 | 713.904 | 713.710 | - | - | - |
| Food and beverages | 247.499 | 250.270 | 250.316 | 1.9 | 1.1 | 0.0 |
| Food | 246.923 | 249.656 | 249.421 | 1.8 | 1.0 | -0.1 |
| Food at home | 232.336 | 235.910 | 235.493 | -0.1 | 1.4 | -0.2 |
| Cereals and bakery products | 258.303 | 263.597 | 264.072 | - | 2.2 | 0.2 |
| Meats, poultry, fish and eggs | 251.022 | 255.789 | 251.294 | - | 0.1 | -1.8 |
| Dairy and related products | 206.805 | 210.062 | 210.010 | - | 1.5 | 0.0 |
| Fruits and vegetables | 303.333 | 302.492 | 312.676 | - | 3.1 | 3.4 |
| Nonalcoholic beverages and beverage materials(1) | 188.900 | 191.872 | 189.844 | - | 0.5 | -1.1 |
| Other food at home | 187.449 | 191.907 | 189.086 | - | 0.9 | -1.5 |
| Food away from home | 262.199 | 263.823 | 263.823 | 4.0 | 0.6 | 0.0 |
| Alcoholic beverages | 254.068 | 257.417 | 261.928 | 4.8 | 3.1 | 1.8 |
| Housing | 247.963 | 248.967 | 248.747 | 3.5 | 0.3 | -0.1 |
| Shelter | 312.873 | 314.012 | 314.802 | 3.4 | 0.6 | 0.3 |
| Rent of primary residence(2) | 331.771 | 332.746 | 333.905 | 2.7 | 0.6 | 0.3 |
| Owners' equiv. rent of residences(2)(3) | 319.919 | 320.777 | 321.659 | 3.9 | 0.5 | 0.3 |
| Owners' equiv. rent of primary residence(2)(3) | 319.919 | 320.777 | 321.659 | 3.9 | 0.5 | 0.3 |
| Fuels and utilities | 209.109 | 207.658 | 204.156 | 6.3 | -2.4 | -1.7 |
| Household energy | 164.232 | 162.580 | 158.829 | 7.5 | -3.3 | -2.3 |
| Energy services(2) | 167.465 | 165.760 | 161.864 | 7.6 | -3.3 | -2.4 |
| Electricity(2) | 161.872 | 159.483 | 157.797 | 14.0 | -2.5 | -1.1 |
| Utility (piped) gas service(2) | 161.726 | 161.145 | 154.388 | -1.6 | -4.5 | -4.2 |
| Household furnishings and operations | 89.460 | 91.209 | 90.038 | 0.0 | 0.6 | -1.3 |
| Apparel | 82.317 | 86.193 | 86.774 | -4.4 | 5.4 | 0.7 |
| Transportation | 189.356 | 188.730 | 188.820 | 3.9 | -0.3 | 0.0 |
| Private transportation | 185.803 | 185.988 | 185.449 | 3.8 | -0.2 | -0.3 |
| New and used motor vehicles(4) | 95.663 | 94.953 | 95.152 | - | -0.5 | 0.2 |
| New vehicles(1) | 171.057 | 170.329 | 171.120 | - | 0.0 | 0.5 |
| Used cars and trucks(1) | 270.646 | 257.907 | 260.902 | - | -3.6 | 1.2 |
| Motor fuel | 262.717 | 264.490 | 256.862 | 10.9 | -2.2 | -2.9 |
| Gasoline (all types) | 260.091 | 261.826 | 254.156 | 10.8 | -2.3 | -2.9 |
| Gasoline, unleaded regular(5) | 250.660 | 252.453 | 244.932 | 11.4 | -2.3 | -3.0 |
| Gasoline, unleaded midgrade(5)(6) | 287.024 | 287.257 | 280.546 | 9.1 | -2.3 | -2.3 |
| Gasoline, unleaded premium(5) | 283.028 | 284.229 | 276.642 | 8.0 | -2.3 | -2.7 |
| Motor vehicle insurance(1) | 535.056 | 543.985 | 555.038 | - | 3.7 | 2.0 |
| Medical care | 506.753 | 505.523 | 506.167 | 1.5 | -0.1 | 0.1 |
| Recreation(4) | 111.221 | 112.151 | 110.695 | -5.0 | -0.5 | -1.3 |
| Education and communication(4) | 143.783 | 142.202 | 142.695 | -0.7 | -0.8 | 0.3 |
| Tuition, other school fees, and childcare(1) .. | 1,197.070 | 1,167.483 | 1,173.204 | - | -2.0 | 0.5 |
| Other goods and services | 394.052 | 393.821 | 396.898 | 2.4 | 0.7 | 0.8 |
| Commodity and service group | | | | | | |
| All items | 238.098 | 238.957 | 238.892 | 2.0 | 0.3 | 0.0 |
| Commodities | 167.475 | 169.007 | 168.361 | 0.9 | 0.5 | -0.4 |
| Commodities less food and beverages | 127.173 | 128.167 | 127.340 | 0.2 | 0.1 | -0.6 |
| Nondurables less food and beverages | 175.258 | 176.292 | 175.319 | 1.8 | 0.0 | -0.6 |
| Durables | 84.021 | 84.908 | 84.247 | -2.0 | 0.3 | -0.8 |
| Services | 305.217 | 305.403 | 305.912 | 2.6 | 0.2 | 0.2 |

Note: See footnotes at end of table.

Table 1. Consumer Price Index for All Urban Consumers (CPI-U): Indexes and percent changes for selected periods Chicago-Naperville-Elgin, IL-IN-WI (1982-84=100 unless otherwise noted) - Continued

| Item and Group | Indexes | | | Percent change from- | | |
|---|--------------|--------------|--------------|----------------------|--------------|--------------|
| | Aug. 2018 | Sep. 2018 | Oct. 2018 | Oct. 2017 | Aug. 2018 | Sep. 2018 |
| Special aggregate indexes | | | | | | |
| All items less medical care | 226.565 | 227.517 | 227.421 | 2.1 | 0.4 | 0.0 |
| All items less shelter | 212.840 | 213.605 | 213.241 | 1.3 | 0.2 | -0.2 |
| Commodities less food | 131.678 | 132.734 | 132.000 | 0.4 | 0.2 | -0.6 |
| Nondurables | 212.232 | 214.075 | 213.537 | 1.9 | 0.6 | -0.3 |
| Nondurables less food | 180.621 | 181.770 | 181.033 | 2.0 | 0.2 | -0.4 |
| Services less rent of shelter(3) | 312.826 | 311.988 | 312.213 | 1.8 | -0.2 | 0.1 |
| Services less medical care services | 290.733 | 290.899 | 291.363 | 2.8 | 0.2 | 0.2 |
| Energy | 203.169 | 203.019 | 197.680 | 9.8 | -2.7 | -2.6 |
| All items less energy | 243.373 | 244.335 | 244.768 | 1.5 | 0.6 | 0.2 |
| All items less food and energy | 243.577 | 244.255 | 244.798 | 1.4 | 0.5 | 0.2 |

Footnotes

(1) Index on a December 1977=100 base.

(2) This index series was calculated using a Laspeyres estimator. All other item stratum index series were calculated using a geometric means estimator.

(3) Index on a December 1982=100 base.

(4) Indexes on a December 1997=100 base.

(5) Special index based on a substantially smaller sample.

(6) Index on a December 1993=100 base.

- Data not available.

Note: Index applies to a month as a whole, not to any specific date. Data not seasonally adjusted.