



For Release: Wednesday, December 12, 2018

18-1904-CHI

MIDWEST INFORMATION OFFICE: Chicago, Ill.

Technical information: (312) 353-1880 BLSInfoChicago@bls.gov www.bls.gov/regions/midwest

Media contact: (312) 353-1138

Consumer Price Index, Chicago-Naperville-Elgin — November 2018

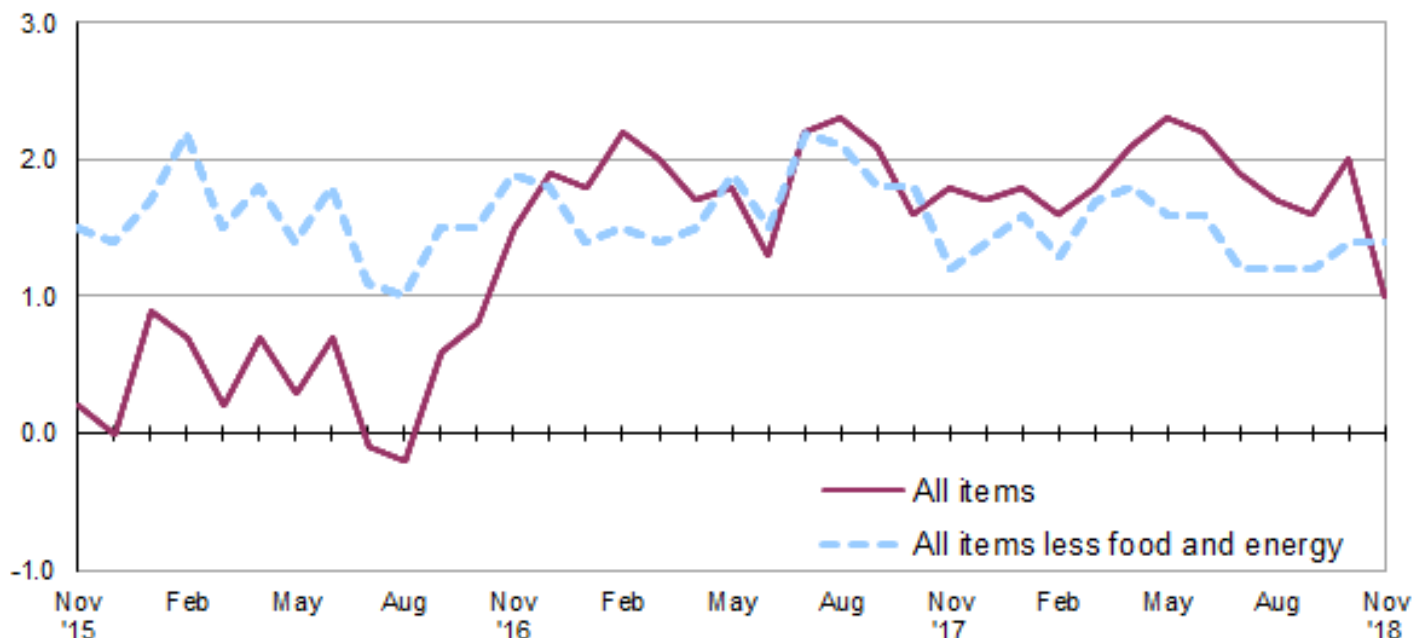
Local prices up 1.0 percent over the year

The Consumer Price Index for All Urban Consumers (CPI-U) in the Chicago-Naperville-Elgin area decreased 0.6 percent in November, the U.S. Bureau of Labor Statistics reported today. Assistant Commissioner for Regional Operations Charlene Peiffer noted that food prices fell 0.3 percent and the energy index decreased 6.8 percent in November. The all items less food and energy index edged down 0.1 percent over the month. Within the all items less food and energy category, prices were lower for apparel over the month, whereas prices rose for shelter and new and used motor vehicles. (Data in this report are not seasonally adjusted. Accordingly, month-to-month changes may reflect the impact of seasonal influences.)

Over the last 12 months, the Chicago area all items CPI-U increased 1.0 percent. (See [chart 1](#) and [table A.](#)) Over the year, the energy index fell 5.4 percent. The decline in the energy index was primarily due to lower gasoline prices. The food index and the all items less food and energy index rose 1.8 percent and 1.4 percent, respectively, over the year. (See [table 1.](#))

Chart 1. Over-the-year percent change in CPI-U, Chicago-Naperville-Elgin, IL-IN-WI, November 2015–November 2018

Percent change



Source: U.S. Bureau of Labor Statistics.

Food

Food prices fell 0.3 percent in November. Of the two components within the food index, prices for food at home (groceries) declined 0.8 percent while prices for food away from home (restaurant, cafeteria, and vending purchases) edged up 0.1 percent. Within the food at home group, indexes were lower in November for citrus fruits; chicken; and spices, seasonings, condiments and sauces. Prices were higher for apples and milk.

From November 2017 to November 2018, the food index increased 1.8 percent. Over the year, costs for food away from home rose 4.0 percent, while grocery prices edged down 0.1 percent.

Energy

The energy index decreased 6.8 percent in November. During the same period, gasoline prices declined (-12.7 percent), while utility (piped) gas service costs and electricity costs rose 1.3 percent and 0.1 percent, respectively.

Over the year, the Chicago area energy index fell 5.4 percent. From November 2017 to November 2018, gasoline prices and electricity prices fell 10.2 percent and 1.2 percent, respectively. Utility (piped) gas service costs increased 0.6 percent over the year.

All items less food and energy

The index for all items less food and energy edged down 0.1 percent in November. Among the index's components, prices were lower for apparel (-4.0 percent), but higher for shelter (0.3 percent) and new and used motor vehicles (1.1 percent).

Over the year, the index for all items less food and energy rose 1.4 percent. A 3.0-percent increase in the index for shelter was the major contributing factor.

Table A. Chicago-Naperville-Elgin, IL-IN-WI, CPI-U 1-month and 12-month percent changes, all items index, not seasonally adjusted

Month	2014		2015		2016		2017		2018	
	1-month	12-month	1-month	12-month	1-month	12-month	1-month	12-month	1-month	12-month
January.....	0.9	1.2	-0.2	0.4	0.8	0.9	0.7	1.8	0.8	1.8
February.....	0.5	0.7	0.0	-0.2	-0.2	0.7	0.1	2.2	0.0	1.6
March.....	1.1	1.9	0.7	-0.6	0.1	0.2	-0.1	2.0	0.0	1.8
April.....	0.5	2.4	0.1	-0.9	0.6	0.7	0.4	1.7	0.7	2.1
May.....	-0.1	1.8	0.3	-0.5	0.0	0.3	0.2	1.8	0.4	2.3
June.....	0.4	2.0	0.2	-0.7	0.5	0.7	0.0	1.3	-0.2	2.2
July.....	-0.4	1.9	-0.1	-0.5	-0.8	-0.1	0.0	2.2	-0.3	1.9
August.....	0.1	1.9	0.4	-0.1	0.2	-0.2	0.3	2.3	0.1	1.7
September.....	0.0	2.1	-0.3	-0.4	0.6	0.6	0.4	2.1	0.4	1.6
October.....	-0.4	2.0	-0.1	-0.2	0.1	0.8	-0.4	1.6	0.0	2.0
November.....	-0.8	1.6	-0.4	0.2	0.2	1.5	0.4	1.8	-0.6	1.0
December.....	-0.4	1.5	-0.6	0.0	-0.2	1.9	-0.4	1.7		

The December 2018 Consumer Price Index for Chicago is scheduled to be released on Friday, January 11, 2019.

Technical Note

The Consumer Price Index (CPI) is a measure of the average change in prices over time in a fixed market basket of goods and services. The Bureau of Labor Statistics publishes CPIs for two population groups: (1) a CPI for All Urban Consumers (CPI-U) which covers approximately 93 percent of the total population and (2) a CPI for Urban Wage Earners and Clerical Workers (CPI-W) which covers approximately 29 percent of the total population. The CPI-U includes, in addition to wage earners and clerical workers, groups such as professional, managerial, and technical workers, the self-employed, short-term workers, the unemployed, and retirees and others not in the labor force.

The CPI is based on prices of food, clothing, shelter, and fuels, transportation fares, charges for doctors' and dentists' services, drugs, and the other goods and services that people buy for day-to-day living. Each month, prices are collected in 75 urban areas across the country from about 5,000 housing units and approximately 22,000 retail establishments--department stores, supermarkets, hospitals, filling stations, and other types of stores and service establishments. All taxes directly associated with the purchase and use of items are included in the index.

The index measures price changes from a designated reference date (1982-84) that equals 100.0. An increase of 16.5 percent, for example, is shown as 116.5. This change can also be expressed in dollars as follows: the price of a base period "market basket" of goods and services in the CPI has risen from \$10 in 1982-84 to \$11.65. For further details see the CPI home page on the Internet at www.bls.gov/cpi and the BLS Handbook of Methods, Chapter 17, The Consumer Price Index, available on the Internet at www.bls.gov/opub/hom/pdf/homch17.pdf.

In calculating the index, price changes for the various items in each location are averaged together with weights that represent their importance in the spending of the appropriate population group. Local data are then combined to obtain a U.S. city average. Because the sample size of a local area is smaller, the local area index is subject to substantially more sampling and other measurement error than the national index. In addition, local indexes are not adjusted for seasonal influences. As a result, local area indexes show greater volatility than the national index, although their long-term trends are quite similar. **NOTE: Area indexes do not measure differences in the level of prices between cities; they only measure the average change in prices for each area since the base period.**

The **Chicago-Naperville-Elgin, Ill.-Ind.-Wis., Core Based Statistical Area** covered in this release is comprised of Cook, DeKalb, DuPage, Grundy, Kane, Kendall, Lake, McHenry, and Will Counties in Illinois; Jasper, Lake, Newton, and Porter Counties in Indiana; and Kenosha County in Wisconsin.

Information in this release will be made available to sensory impaired individuals upon request. Voice phone: (202) 691-5200; Federal Relay Service: (800) 877-8339.

Table 1. Consumer Price Index for All Urban Consumers (CPI-U): Indexes and percent changes for selected periods Chicago-Naperville-Elgin, IL-IN-WI (1982-84=100 unless otherwise noted)

Item and Group	Indexes			Percent change from-		
	Sep. 2018	Oct. 2018	Nov. 2018	Nov. 2017	Sep. 2018	Oct. 2018
Expenditure category						
All items	238.957	238.892	237.511	1.0	-0.6	-0.6
All items (1967=100)	713.904	713.710	709.583	-	-	-
Food and beverages	250.270	250.316	249.430	1.8	-0.3	-0.4
Food	249.656	249.421	248.560	1.8	-0.4	-0.3
Food at home	235.910	235.493	233.710	-0.1	-0.9	-0.8
Cereals and bakery products	263.597	264.072	262.931	-	-0.3	-0.4
Meats, poultry, fish and eggs	255.789	251.294	249.317	-	-2.5	-0.8
Dairy and related products	210.062	210.010	207.163	-	-1.4	-1.4
Fruits and vegetables	302.492	312.676	311.407	-	2.9	-0.4
Nonalcoholic beverages and beverage materials(1)	191.872	189.844	186.143	-	-3.0	-1.9
Other food at home	191.907	189.086	188.214	-	-1.9	-0.5
Food away from home	263.823	263.823	264.147	4.0	0.1	0.1
Alcoholic beverages	257.417	261.928	260.660	2.0	1.3	-0.5
Housing	248.967	248.747	249.225	2.3	0.1	0.2
Shelter	314.012	314.802	315.856	3.0	0.6	0.3
Rent of primary residence(2)	332.746	333.905	335.604	2.9	0.9	0.5
Owners' equiv. rent of residences(2)(3)	320.777	321.659	322.748	3.9	0.6	0.3
Owners' equiv. rent of primary residence(2)(3)	320.777	321.659	322.748	3.9	0.6	0.3
Fuels and utilities	207.658	204.156	204.979	0.2	-1.3	0.4
Household energy	162.580	158.829	159.619	-0.5	-1.8	0.5
Energy services(2)	165.760	161.864	162.798	-0.5	-1.8	0.6
Electricity(2)	159.483	157.797	157.904	-1.2	-1.0	0.1
Utility (piped) gas service(2)	161.145	154.388	156.437	0.6	-2.9	1.3
Household furnishings and operations	91.209	90.038	88.904	-1.0	-2.5	-1.3
Apparel	86.193	86.774	83.301	-5.0	-3.4	-4.0
Transportation	188.730	188.820	183.765	-0.7	-2.6	-2.7
Private transportation	185.988	185.449	179.788	-1.6	-3.3	-3.1
New and used motor vehicles(4)	94.953	95.152	96.218	-	1.3	1.1
New vehicles(1)	170.329	171.120	173.737	-	2.0	1.5
Used cars and trucks(1)	257.907	260.902	263.433	-	2.1	1.0
Motor fuel	264.490	256.862	224.447	-10.1	-15.1	-12.6
Gasoline (all types)	261.826	254.156	221.888	-10.2	-15.3	-12.7
Gasoline, unleaded regular(5)	252.453	244.932	213.248	-10.2	-15.5	-12.9
Gasoline, unleaded midgrade(5)(6)	287.257	280.546	248.018	-10.1	-13.7	-11.6
Gasoline, unleaded premium(5)	284.229	276.642	248.023	-8.8	-12.7	-10.3
Motor vehicle insurance(1)	543.985	555.038	555.038	-	2.0	0.0
Medical care	505.523	506.167	505.134	0.7	-0.1	-0.2
Recreation(4)	112.151	110.695	110.265	-0.3	-1.7	-0.4
Education and communication(4)	142.202	142.695	141.669	-1.1	-0.4	-0.7
Tuition, other school fees, and childcare(1) ..	1,167.483	1,173.204	1,174.119	-	0.6	0.1
Other goods and services	393.821	396.898	399.515	1.6	1.4	0.7
Commodity and service group						
All items	238.957	238.892	237.511	1.0	-0.6	-0.6
Commodities	169.007	168.361	165.228	-1.3	-2.2	-1.9
Commodities less food and beverages	128.167	127.340	123.704	-3.3	-3.5	-2.9
Nondurables less food and beverages	176.292	175.319	166.215	-4.9	-5.7	-5.2
Durables	84.908	84.247	84.664	-1.0	-0.3	0.5
Services	305.403	305.912	306.273	2.2	0.3	0.1

Note: See footnotes at end of table.

Table 1. Consumer Price Index for All Urban Consumers (CPI-U): Indexes and percent changes for selected periods Chicago-Naperville-Elgin, IL-IN-WI (1982-84=100 unless otherwise noted) - Continued

Item and Group	Indexes			Percent change from-		
	Sep. 2018	Oct. 2018	Nov. 2018	Nov. 2017	Sep. 2018	Oct. 2018
Special aggregate indexes						
All items less medical care	227.517	227.421	226.023	1.0	-0.7	-0.6
All items less shelter	213.605	213.241	211.004	0.0	-1.2	-1.0
Commodities less food	132.734	132.000	128.354	-3.1	-3.3	-2.8
Nondurables	214.075	213.537	207.908	-1.3	-2.9	-2.6
Nondurables less food	181.770	181.033	172.185	-4.4	-5.3	-4.9
Services less rent of shelter(3)	311.988	312.213	311.860	1.4	0.0	-0.1
Services less medical care services	290.899	291.363	291.748	2.4	0.3	0.1
Energy	203.019	197.680	184.213	-5.4	-9.3	-6.8
All items less energy	244.335	244.768	244.519	1.5	0.1	-0.1
All items less food and energy	244.255	244.798	244.647	1.4	0.2	-0.1

Footnotes

(1) Index on a December 1977=100 base.

(2) This index series was calculated using a Laspeyres estimator. All other item stratum index series were calculated using a geometric means estimator.

(3) Index on a December 1982=100 base.

(4) Indexes on a December 1997=100 base.

(5) Special index based on a substantially smaller sample.

(6) Index on a December 1993=100 base.

- Data not available.

Note: Index applies to a month as a whole, not to any specific date. Data not seasonally adjusted.