



For Release: Wednesday, March 20, 2019

19-110-CHI

MIDWEST INFORMATION OFFICE: Chicago, Ill.

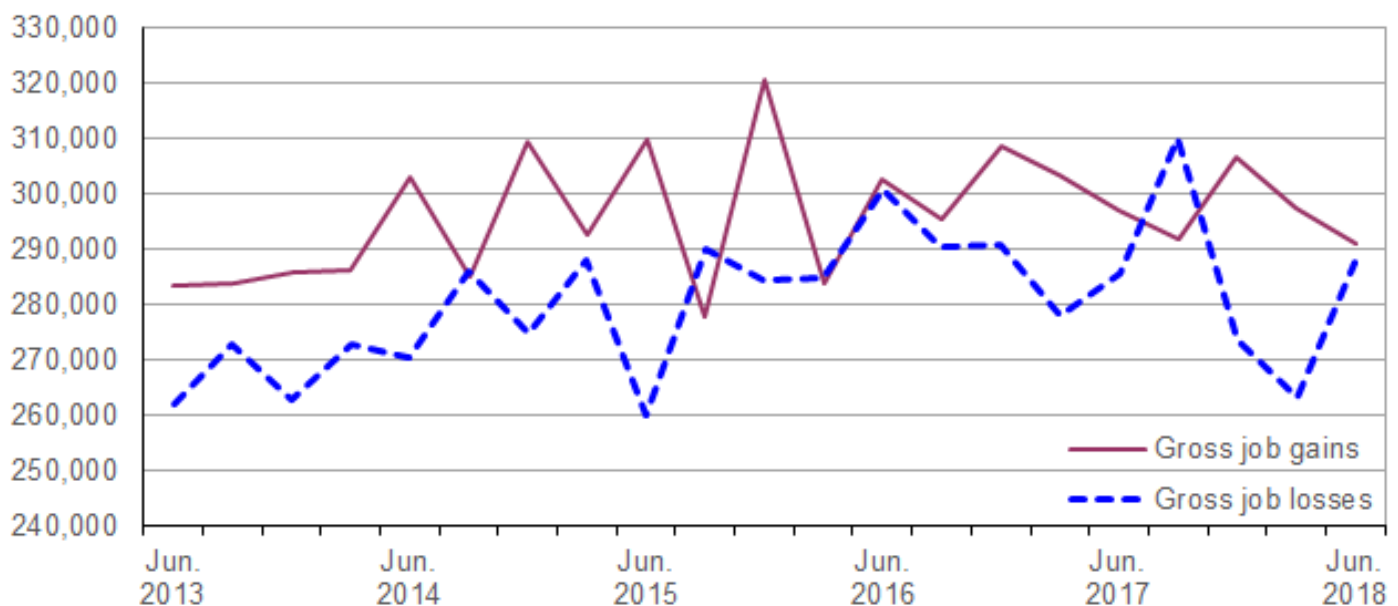
Technical information: (312) 353-1880 BLSInfoChicago@bls.gov [www.bls.gov/regions/midwest](http://www.bls.gov/regions/midwest)

Media contact: (312) 353-1138

## Business Employment Dynamics in Illinois — Second Quarter 2018

From March 2018 to June 2018, gross job gains in Illinois totaled 291,226, while gross job losses numbered 287,764, the U.S. Bureau of Labor Statistics reported today. Assistant Commissioner for Regional Operations Charlene Peiffer noted that gross job gains exceeded gross job losses by 3,462. During the previous quarter, gross job gains exceeded gross job losses by 33,971. (See [chart 1.](#))

**Chart 1. Private sector gross job gains and losses in Illinois, June 2013–June 2018, seasonally adjusted**



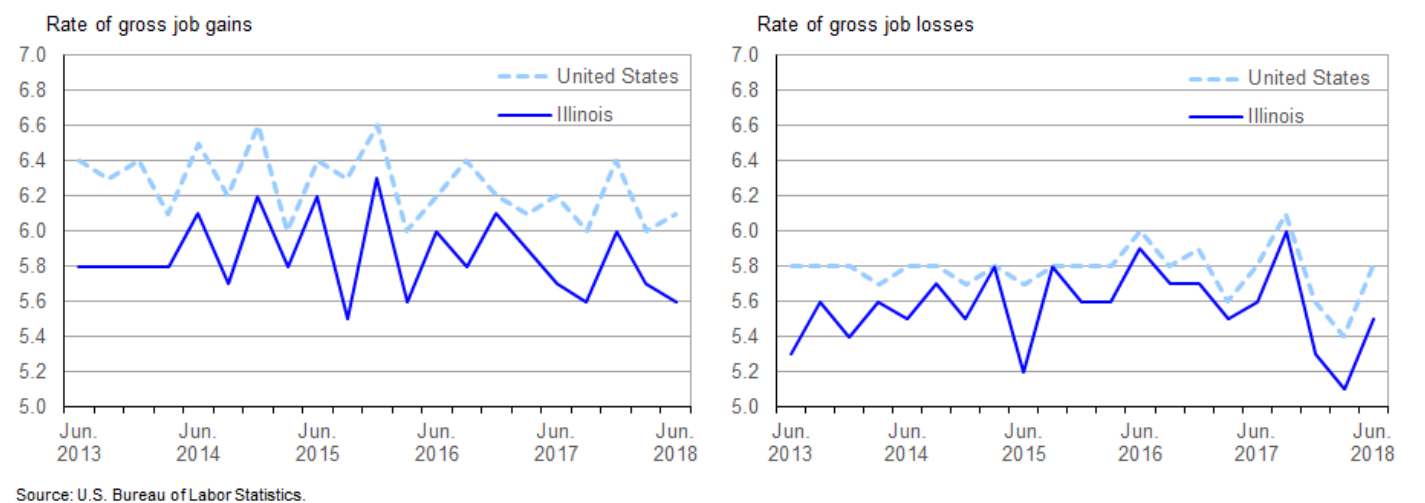
Source: U.S. Bureau of Labor Statistics.

The change in the number of jobs over time is the net result of increases and decreases in employment that occur at all businesses in the economy. Business Employment Dynamics (BED) statistics track these changes in employment at private business establishments from the third month of one quarter to the third month of the next. Gross job gains are the sum of increases in employment from expansions at existing establishments and the addition of new jobs at opening establishments. Gross job losses are the result of contractions in employment at existing establishments and the loss of jobs at closing establishments. The difference between the number of gross job gains and the number of gross job losses is the net change in employment. (See the [Technical Note](#) for more information.)

The 291,226 gross job gains in the 3-month period ended June 2018 were less than the 297,390 gains in the previous 3-month period. During the past 5 years, gross job gains in Illinois peaked at 320,700 in December 2015 and were at a low of 277,696 in September 2015. The 287,764 gross job losses in the quarter ended June 2018, although larger than those seen in the previous quarter, remained below the 5-year peak of 309,933 in the quarter ended September 2017.

Gross job gains represented 5.6 percent of private sector employment in Illinois in the quarter ended June 2018, while nationally gross job gains accounted for 6.1 percent of private sector employment. (See [chart 2](#).) With one exception, Illinois' rate of gross job gains has been below the national rate each quarter since the series began in 1992. The rate of gross job losses as a percent of private sector employment in Illinois was 5.5 percent, below the national rate of 5.8 percent in the quarter ended June 2018. Since the series inception, the rate of gross job losses in Illinois has been below the U.S. rate each quarter, with two exceptions.

**Chart 2. Private sector gross job gains and losses as a percent of employment, United States and Illinois, June 2013–June 2018, seasonally adjusted**



During the second quarter of 2018, gross job gains exceeded gross losses in eight industry sectors in Illinois. For example, within transportation and warehousing, gross job gains exceeded gross job losses by 2,339. While more than 11,000 jobs were lost in closing and contracting establishments in the industry, opening and expanding establishments created almost 14,000 jobs. In manufacturing, 19,759 jobs were created in opening and expanding establishments while 17,422 jobs were lost in closing and contracting establishments, resulting in a net employment gain of 2,337. In the six other sectors with net employment gains during the quarter, three industries had net job gains ranging between 1,000 and 2,000 and three industries had net job gains of less than 1,000. (See [table 1](#).)

Gross job losses exceeded gross job gains in three industry sectors in the second quarter of 2018. Within professional and business services, gross job losses exceeded gross job gains by 4,096. Net job losses in retail trade and information were 1,906 and 1,725, respectively.

Three states in the East North Central Census division, including Illinois, had gross job gains that exceeded gross job losses in the quarter ended June 2018. (See [table A](#).) All five states in the division had rates of gross job gains that were lower than the 6.1-percent national rate and rates of gross job losses that were lower than the 5.8-percent national rate.

**Table A. Private sector gross job gains and losses for the United States, East North Central Division, and East North Central states, June 2018, seasonally adjusted**

Area	Gross job gains		Gross job losses		Net change	Net change as a percent of total employment
	Total	As a percent of total employment	Total	As a percent of total employment		
United States.....	7,639,000	6.1	7,202,000	5.8	437,000	0.3
East North Central <sup>(1)</sup> .....	1,047,864	—	1,016,812	—	31,052	—
Illinois .....	291,226	5.6	287,764	5.5	3,462	0.1
Indiana.....	146,171	5.4	147,061	5.5	-890	-0.1
Michigan.....	212,862	5.6	194,576	5.1	18,286	0.5
Ohio.....	260,528	5.6	250,063	5.4	10,465	0.2
Wisconsin.....	137,077	5.4	137,348	5.5	-271	-0.1

Footnotes:

(1) Data were calculated for this release using published gross job gains and gross job losses for states located in the East North Central Census Division.

Note: Dash indicates data not available.

## Additional statistics and other information

BED data for the states have been included in [table 2](#) of this release. For more information on the Business Employment Dynamics data, visit the BED web site at [www.bls.gov/bdm/](http://www.bls.gov/bdm/).

**The Business Employment Dynamics for third quarter 2018 are scheduled to be released on Wednesday, April 24, 2019.**

## Technical Note

The Business Employment Dynamics (BED) data are a product of a federal-state cooperative program known as Quarterly Census of Employment and Wages (QCEW), or the ES-202 program. The BED data are compiled from existing QCEW records. The QCEW reports are sent by the State Employment Security Agencies (SESAs) to BLS and form the basis of the Bureau's QCEW program and establishment universe sampling frame. These reports are also used to produce the QCEW data on total employment and wages. Other important Bureau uses of the QCEW reports are in the Current Employment Statistics (CES) program. The CES program produces monthly estimates of employment, net changes, and earnings by detailed industry.

In the BED program, the QCEW records are linked across quarters to provide a longitudinal history for each establishment. The linkage process allows the tracking of net employment changes at the establishment level, which in turn allows the estimation of jobs gained at opening and expanding establishments and jobs lost at closing and contracting establishments.

The change in the number of jobs over time is the net result of increases and decreases in employment that occur at all businesses in the economy. BED statistics track these changes in employment at private business establishments from the third month of one quarter to the third month of the next. Gross job gains are the sum of increases in employment from expansions at existing establishments and the addition of new jobs at opening establishments. Gross job losses are the result of contractions in employment at existing establishments and the loss of jobs at closing establishments. The difference between the number of gross jobs gained and the number of gross jobs lost is the net change in employment.

Gross job gains and gross job losses are expressed as rates by dividing their levels by the average of employment in the current and previous quarters. The rates are calculated for the components of gross job gains and gross job losses and then summed to form their respective totals. These rates can be added and subtracted just as their levels can. For instance, the difference between the gross job gains rate and the gross job losses rate is the net growth rate.

The formal definitions of employment changes are as follows:

*Openings.* These are either establishments with positive third month employment for the second time in the current quarter, with no links to the prior quarter, or with positive third month employment in the current quarter following zero employment in the previous quarter.

*Expansions.* These are establishments with positive employment in the third month in both the previous and current quarters, with a net increase in employment over this period.

*Closings.* These are either establishments with positive third month employment in the previous quarter, with no employment or zero employment reported in the current quarter.

*Contractions.* These are establishments with positive employment in the third month in both the previous and current quarters, with a net decrease in employment over this period.

Information in this release will be made available to sensory impaired individuals upon request. Voice phone: (202) 691-5200; Federal Relay Service: (800) 877-8339.

**Table 1. Private sector gross job gains and losses by industry, Illinois, seasonally adjusted**

Category	Gross job gains and job losses (3 months ended)					Gross job gains and job losses as a percent of employment (3 months ended)				
	June 2017	Sept 2017	Dec. 2017	Mar. 2018	June 2018	June 2017	Sept 2017	Dec. 2017	Mar. 2018	June 2018
<b>Total private <sup>(1)</sup></b>										
Gross job gains .....	296,909	291,827	306,642	297,390	291,226	5.7	5.6	6.0	5.7	5.6
At expanding establishments .....	243,256	238,696	250,030	243,235	233,824	4.7	4.6	4.9	4.7	4.5
At opening establishments .....	53,653	53,131	56,612	54,155	57,402	1.0	1.0	1.1	1.0	1.1
Gross job losses .....	285,523	309,933	273,761	263,419	287,764	5.6	6.0	5.3	5.1	5.5
At contracting establishments .....	235,725	251,696	217,813	215,544	238,514	4.6	4.9	4.2	4.2	4.6
At closing establishments .....	49,798	58,237	55,948	47,875	49,250	1.0	1.1	1.1	0.9	0.9
Net employment change <sup>(2)</sup> .....	11,386	-18,106	32,881	33,971	3,462	0.1	-0.4	0.7	0.6	0.1
<b>Construction</b>										
Gross job gains .....	25,404	23,253	24,583	28,826	25,524	11.4	10.6	11.2	12.8	11.1
At expanding establishments .....	20,289	18,141	19,487	23,923	20,517	9.1	8.3	8.9	10.6	8.9
At opening establishments .....	5,115	5,112	5,096	4,903	5,007	2.3	2.3	2.3	2.2	2.2
Gross job losses .....	26,562	24,587	25,352	21,959	24,301	11.9	11.2	11.5	9.7	10.6
At contracting establishments .....	22,026	20,179	19,797	17,676	20,486	9.9	9.2	9.0	7.8	8.9
At closing establishments .....	4,536	4,408	5,555	4,283	3,815	2.0	2.0	2.5	1.9	1.7
Net employment change <sup>(2)</sup> .....	-1,158	-1,334	-769	6,867	1,223	-0.5	-0.6	-0.3	3.1	0.5
<b>Manufacturing</b>										
Gross job gains .....	22,471	17,965	20,284	18,250	19,759	3.9	3.2	3.5	3.2	3.3
At expanding establishments .....	20,742	15,836	18,061	16,770	17,728	3.6	2.8	3.1	2.9	3.0
At opening establishments .....	1,729	2,129	2,223	1,480	2,031	0.3	0.4	0.4	0.3	0.3
Gross job losses .....	16,760	20,341	16,122	14,700	17,422	2.9	3.6	2.8	2.5	3.0
At contracting establishments .....	14,353	16,987	13,438	12,976	15,079	2.5	3.0	2.3	2.2	2.6
At closing establishments .....	2,407	3,354	2,684	1,724	2,343	0.4	0.6	0.5	0.3	0.4
Net employment change <sup>(2)</sup> .....	5,711	-2,376	4,162	3,550	2,337	1.0	-0.4	0.7	0.7	0.3
<b>Wholesale trade</b>										
Gross job gains .....	12,979	19,208	15,066	11,847	11,602	4.3	6.2	4.8	3.9	3.9
At expanding establishments .....	10,960	17,269	13,064	9,921	9,752	3.6	5.6	4.2	3.3	3.3
At opening establishments .....	2,019	1,939	2,002	1,926	1,850	0.7	0.6	0.6	0.6	0.6
Gross job losses .....	11,215	13,085	11,169	11,250	11,269	3.7	4.2	3.6	3.8	3.8
At contracting establishments .....	8,856	10,301	8,935	8,817	9,055	2.9	3.3	2.9	3.0	3.1
At closing establishments .....	2,359	2,784	2,234	2,433	2,214	0.8	0.9	0.7	0.8	0.7
Net employment change <sup>(2)</sup> .....	1,764	6,123	3,897	597	333	0.6	2.0	1.2	0.1	0.1
<b>Retail trade</b>										
Gross job gains .....	33,454	30,544	32,136	31,543	32,199	5.4	5.0	5.3	5.2	5.3
At expanding establishments .....	28,574	25,651	28,034	27,522	27,180	4.6	4.2	4.6	4.5	4.5
At opening establishments .....	4,880	4,893	4,102	4,021	5,019	0.8	0.8	0.7	0.7	0.8
Gross job losses .....	36,705	39,998	31,977	32,202	34,105	5.9	6.6	5.2	5.3	5.6
At contracting establishments .....	31,196	34,711	28,046	28,469	29,855	5.0	5.7	4.6	4.7	4.9
At closing establishments .....	5,509	5,287	3,931	3,733	4,250	0.9	0.9	0.6	0.6	0.7
Net employment change <sup>(2)</sup> .....	-3,251	-9,454	159	-659	-1,906	-0.5	-1.6	0.1	-0.1	-0.3
<b>Transportation and warehousing</b>										
Gross job gains .....	12,568	14,487	16,766	12,663	13,616	5.0	5.8	6.6	4.6	5.0
At expanding establishments .....	10,255	12,334	14,056	10,954	10,987	4.1	4.9	5.5	4.0	4.0
At opening establishments .....	2,313	2,153	2,710	1,709	2,629	0.9	0.9	1.1	0.6	1.0
Gross job losses .....	13,484	10,023	11,395	14,564	11,277	5.5	4.0	4.5	5.4	4.1
At contracting establishments .....	11,543	7,992	8,767	12,365	9,613	4.7	3.2	3.5	4.6	3.5
At closing establishments .....	1,941	2,031	2,628	2,199	1,664	0.8	0.8	1.0	0.8	0.6
Net employment change <sup>(2)</sup> .....	-916	4,464	5,371	-1,901	2,339	-0.5	1.8	2.1	-0.8	0.9
<b>Information</b>										
Gross job gains .....	3,893	4,673	4,131	5,474	4,565	4.0	4.9	4.4	5.8	4.8
At expanding establishments .....	3,250	3,875	3,385	4,537	3,705	3.3	4.1	3.6	4.8	3.9
At opening establishments .....	643	798	746	937	860	0.7	0.8	0.8	1.0	0.9
Gross job losses .....	4,893	5,401	4,675	4,407	6,290	5.1	5.7	4.9	4.6	6.7

Note: See footnotes at end of table.

**Table 1. Private sector gross job gains and losses by industry, Illinois, seasonally adjusted - Continued**

Category	Gross job gains and job losses (3 months ended)					Gross job gains and job losses as a percent of employment (3 months ended)				
	June 2017	Sept 2017	Dec. 2017	Mar. 2018	June 2018	June 2017	Sept 2017	Dec. 2017	Mar. 2018	June 2018
At contracting establishments .....	4,228	4,363	3,688	3,313	5,287	4.4	4.6	3.9	3.5	5.6
At closing establishments .....	665	1,038	987	1,094	1,003	0.7	1.1	1.0	1.1	1.1
Net employment change <sup>(2)</sup> .....	-1,000	-728	-544	1,067	-1,725	-1.1	-0.8	-0.5	1.2	-1.9
<b>Financial activities</b>										
Gross job gains .....	15,990	15,274	16,466	13,668	15,119	4.4	4.1	4.5	3.6	4.0
At expanding establishments .....	13,065	12,505	12,503	10,997	12,069	3.6	3.4	3.4	2.9	3.2
At opening establishments .....	2,925	2,769	3,963	2,671	3,050	0.8	0.7	1.1	0.7	0.8
Gross job losses .....	14,461	15,662	15,126	13,822	14,362	3.9	4.2	4.0	3.7	3.8
At contracting establishments .....	11,186	11,476	11,234	10,561	11,305	3.0	3.1	3.0	2.8	3.0
At closing establishments .....	3,275	4,186	3,892	3,261	3,057	0.9	1.1	1.0	0.9	0.8
Net employment change <sup>(2)</sup> .....	1,529	-388	1,340	-154	757	0.5	-0.1	0.5	-0.1	0.2
<b>Professional and business services</b>										
Gross job gains .....	67,700	65,371	72,989	60,750	62,542	7.2	7.0	7.7	6.4	6.6
At expanding establishments .....	54,635	54,444	59,702	51,102	49,854	5.8	5.8	6.3	5.4	5.3
At opening establishments .....	13,065	10,927	13,287	9,648	12,688	1.4	1.2	1.4	1.0	1.3
Gross job losses .....	62,828	71,407	61,492	59,559	66,638	6.7	7.6	6.5	6.2	7.0
At contracting establishments .....	50,782	57,464	47,350	48,987	53,230	5.4	6.1	5.0	5.1	5.6
At closing establishments .....	12,046	13,943	14,142	10,572	13,408	1.3	1.5	1.5	1.1	1.4
Net employment change <sup>(2)</sup> .....	4,872	-6,036	11,497	1,191	-4,096	0.5	-0.6	1.2	0.2	-0.4
<b>Education and health services</b>										
Gross job gains .....	34,400	35,763	34,471	35,585	36,443	3.8	3.9	3.8	3.9	4.0
At expanding establishments .....	28,969	30,918	29,055	31,290	29,234	3.2	3.4	3.2	3.4	3.2
At opening establishments .....	5,431	4,845	5,416	4,295	7,209	0.6	0.5	0.6	0.5	0.8
Gross job losses .....	33,285	35,620	32,053	30,418	34,544	3.7	3.9	3.5	3.3	3.7
At contracting establishments .....	27,995	29,504	25,862	24,652	29,782	3.1	3.2	2.8	2.7	3.2
At closing establishments .....	5,290	6,116	6,191	5,766	4,762	0.6	0.7	0.7	0.6	0.5
Net employment change <sup>(2)</sup> .....	1,115	143	2,418	5,167	1,899	0.1	0.0	0.3	0.6	0.3
<b>Leisure and hospitality</b>										
Gross job gains .....	50,903	48,214	51,758	57,941	51,723	8.4	7.9	8.5	9.4	8.3
At expanding establishments .....	40,106	36,029	39,462	43,203	40,314	6.6	5.9	6.5	7.0	6.5
At opening establishments .....	10,797	12,185	12,296	14,738	11,409	1.8	2.0	2.0	2.4	1.8
Gross job losses .....	49,110	55,322	49,371	44,610	50,704	8.0	9.1	8.2	7.3	8.2
At contracting establishments .....	41,145	45,196	39,749	36,052	41,844	6.7	7.4	6.6	5.9	6.8
At closing establishments .....	7,965	10,126	9,622	8,558	8,860	1.3	1.7	1.6	1.4	1.4
Net employment change <sup>(2)</sup> .....	1,793	-7,108	2,387	13,331	1,019	0.4	-1.2	0.3	2.1	0.1
<b>Other services <sup>(3)</sup></b>										
Gross job gains .....	12,841	12,747	13,057	12,085	12,646	6.6	6.6	6.7	6.1	6.5
At expanding establishments .....	9,657	9,263	9,747	9,455	9,733	5.0	4.8	5.0	4.8	5.0
At opening establishments .....	3,184	3,484	3,310	2,630	2,913	1.6	1.8	1.7	1.3	1.5
Gross job losses .....	12,138	13,301	10,876	11,669	12,278	6.3	6.8	5.6	6.0	6.3
At contracting establishments .....	9,482	10,108	8,391	8,797	9,387	4.9	5.2	4.3	4.5	4.8
At closing establishments .....	2,656	3,193	2,485	2,872	2,891	1.4	1.6	1.3	1.5	1.5
Net employment change <sup>(2)</sup> .....	703	-554	2,181	416	368	0.3	-0.2	1.1	0.1	0.2

Footnotes:

(1) Includes unclassified sector not shown separately.

(2) The net employment change is the difference between total gross job gains and total gross job losses. See the Technical Note for further information.

(3) Except public administration.

**Table 2. Private sector gross job gains and losses as a percent of total employment by state, seasonally adjusted**

Category	Gross job gains as a percent of employment (3 months ended)					Gross job losses as a percent of employment (3 months ended)				
	June 2017	Sept. 2017	Dec. 2017	Mar. 2018	June 2018	June 2017	Sept. 2017	Dec. 2017	Mar. 2018	June 2018
United States <sup>(1)</sup> .....	6.2	6.0	6.4	6.0	6.1	5.8	6.1	5.6	5.4	5.8
Alabama .....	5.6	6.0	6.0	6.0	5.8	5.6	5.8	5.4	5.3	5.7
Alaska .....	10.9	8.7	9.7	9.8	10.9	9.9	10.8	10.2	8.8	10.7
Arizona .....	6.2	6.6	6.3	6.0	6.0	5.7	5.2	5.3	5.3	5.9
Arkansas .....	5.4	5.8	6.1	5.4	5.0	5.7	5.5	5.1	5.0	5.6
California .....	6.9	6.5	6.9	6.4	6.7	6.5	6.3	6.0	5.9	6.3
Colorado .....	7.0	6.7	6.8	6.8	6.8	6.3	6.5	6.1	6.0	6.1
Connecticut .....	5.7	5.4	5.3	5.1	5.8	5.2	5.8	5.2	5.2	5.0
Delaware .....	6.7	6.4	7.0	7.1	6.5	6.6	6.6	6.4	5.9	6.0
District of Columbia .....	5.7	5.4	5.8	6.0	5.6	5.4	5.2	5.0	4.7	5.5
Florida .....	6.6	5.8	8.2	6.1	6.5	6.1	7.5	5.3	5.5	6.1
Georgia .....	6.2	6.2	6.9	6.5	6.2	6.1	6.1	5.6	5.6	6.4
Hawaii .....	5.2	5.4	5.1	5.0	5.2	5.3	5.1	4.7	4.8	5.5
Idaho .....	7.3	6.7	7.4	7.9	7.3	6.6	6.8	6.6	5.9	6.7
Illinois .....	5.7	5.6	6.0	5.7	5.6	5.6	6.0	5.3	5.1	5.5
Indiana .....	5.7	5.4	5.7	5.6	5.4	5.5	5.6	5.0	5.1	5.5
Iowa .....	5.7	5.5	5.9	5.5	5.7	5.8	5.7	5.3	5.3	5.4
Kansas .....	5.5	6.3	5.9	5.2	5.7	6.5	5.7	5.2	5.5	5.6
Kentucky .....	6.1	6.0	6.1	6.2	5.9	6.0	6.0	5.6	5.9	5.6
Louisiana .....	6.3	6.2	6.2	6.5	6.1	6.6	6.1	6.0	5.8	6.5
Maine .....	7.7	6.5	7.2	7.2	8.1	6.8	7.5	6.6	7.0	7.1
Maryland .....	6.4	6.3	6.2	6.3	6.0	6.1	6.2	6.3	5.7	5.8
Massachusetts .....	6.1	5.4	5.7	5.4	6.1	5.3	5.6	5.4	5.2	5.4
Michigan .....	5.8	5.3	5.7	5.7	5.6	5.3	6.0	5.4	4.6	5.1
Minnesota .....	5.7	5.3	5.8	5.3	5.8	5.3	5.7	5.5	5.0	5.3
Mississippi .....	5.9	5.9	6.3	5.5	5.7	6.0	5.9	5.4	5.8	6.0
Missouri .....	5.6	5.9	5.7	5.4	5.7	5.6	5.9	5.5	5.2	5.7
Montana .....	7.9	7.2	8.5	7.8	8.0	7.7	7.9	7.4	7.1	7.8
Nebraska .....	5.5	5.9	6.2	5.6	5.9	6.1	5.9	5.5	5.5	5.8
Nevada .....	6.2	6.2	6.6	6.5	6.1	5.9	5.8	5.2	5.4	5.8
New Hampshire .....	6.6	5.5	6.7	6.1	6.7	6.0	6.6	5.9	5.9	6.3
New Jersey .....	6.7	6.0	6.4	5.6	6.5	5.6	6.3	5.8	5.8	5.7
New Mexico .....	6.8	6.6	6.5	6.3	6.5	6.4	6.3	6.1	5.5	6.2
New York .....	6.4	6.3	6.2	6.2	6.3	5.8	6.1	5.8	5.6	5.8
North Carolina .....	6.3	6.0	6.3	6.2	6.1	6.2	6.0	5.5	5.2	5.5
North Dakota .....	6.8	6.7	6.8	7.0	6.7	6.9	6.7	6.8	6.3	6.2
Ohio .....	5.8	5.3	5.7	5.5	5.6	5.5	5.7	5.2	5.0	5.4
Oklahoma .....	6.6	6.6	6.4	6.1	6.3	6.0	6.0	5.8	5.5	6.5
Oregon .....	6.7	6.6	6.8	7.8	6.2	6.1	6.4	6.0	5.6	6.2
Pennsylvania .....	5.5	5.5	5.5	5.2	5.3	5.2	5.2	5.0	4.9	5.1
Rhode Island .....	6.5	6.0	6.6	6.3	6.3	5.9	6.3	6.0	6.1	6.1
South Carolina .....	6.1	5.8	7.0	5.9	7.5	6.1	6.2	5.3	4.7	6.5
South Dakota .....	6.2	5.8	6.4	6.4	6.1	6.2	5.9	5.7	5.9	6.1
Tennessee .....	5.5	5.4	5.9	5.0	5.5	5.2	5.2	4.9	4.8	5.1
Texas .....	5.9	5.9	6.4	5.8	5.9	5.4	5.8	5.3	5.1	5.2
Utah .....	6.8	7.0	7.0	7.4	6.9	6.3	6.3	5.9	6.0	6.3
Vermont .....	7.9	6.5	7.4	6.4	7.2	6.8	7.8	6.5	7.0	7.3
Virginia .....	6.4	5.9	6.3	5.8	6.1	5.9	6.2	5.5	5.2	5.8
Washington .....	7.1	6.4	6.9	7.2	7.3	6.2	6.4	6.0	5.7	6.3
West Virginia .....	6.4	6.7	6.3	6.8	6.8	6.5	6.3	6.1	5.8	6.4
Wisconsin .....	5.6	5.0	5.6	5.6	5.4	5.5	5.7	5.0	4.7	5.5
Wyoming .....	8.6	8.7	8.7	8.4	8.2	9.1	7.9	8.4	8.0	8.3
Puerto Rico .....	5.4	4.5	7.1	8.4	8.0	5.4	6.8	11.8	6.8	6.2
Virgin Islands .....	6.7	4.2	9.2	12.0	12.5	5.3	11.6	28.2	16.8	8.6

Note: See footnotes at end of table.

Footnotes

(1) Totals for the United States do not include data for Puerto Rico or the Virgin Islands.