



For Release: Friday, June 28, 2019

19-712-CHI

MIDWEST INFORMATION OFFICE: Chicago, Ill.

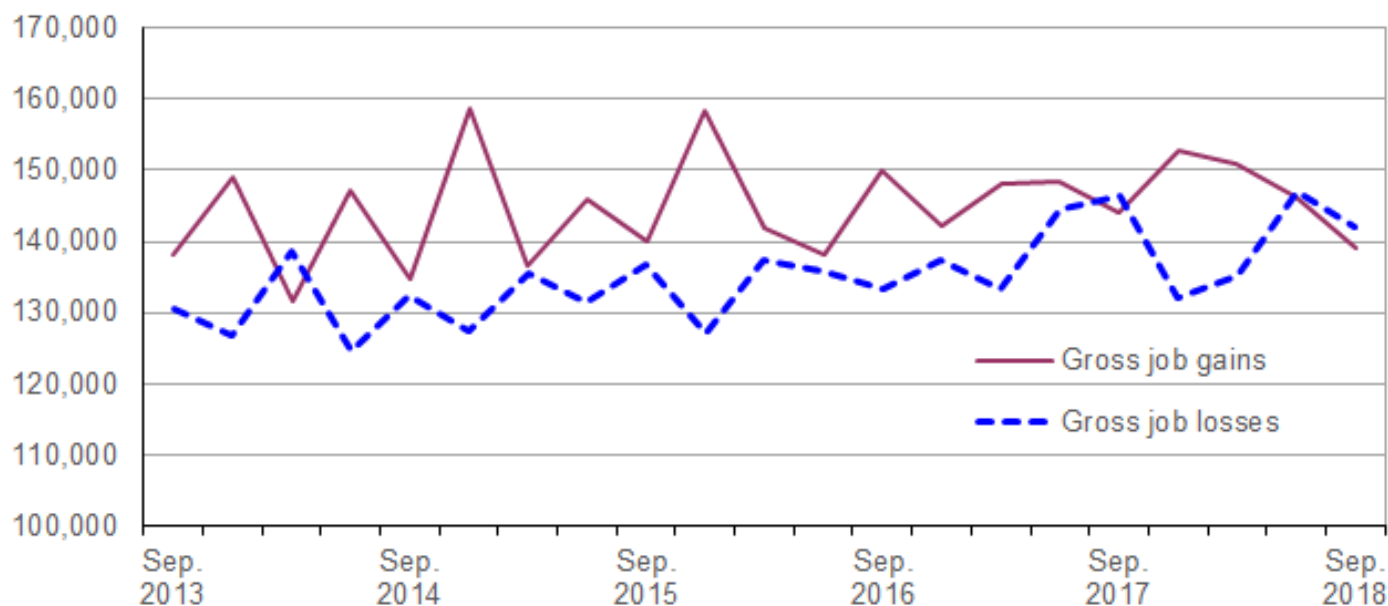
Technical information: (312) 353-1880 BLSInfoChicago@bls.gov www.bls.gov/regions/midwest

Media contact: (312) 353-1138

Business Employment Dynamics in Indiana — Third Quarter 2018

From June 2018 to September 2018, gross job losses in Indiana totaled 142,048, while gross job gains numbered 139,020, the U.S. Bureau of Labor Statistics reported today. Assistant Commissioner for Regional Operations Charlene Peiffer noted that gross job losses exceeded gross job gains by 3,028. During the previous quarter, gross job losses exceeded gross job gains by 890. (See [chart 1](#).)

Chart 1. Private sector gross job gains and losses in Indiana, September 2013–September 2018, seasonally adjusted

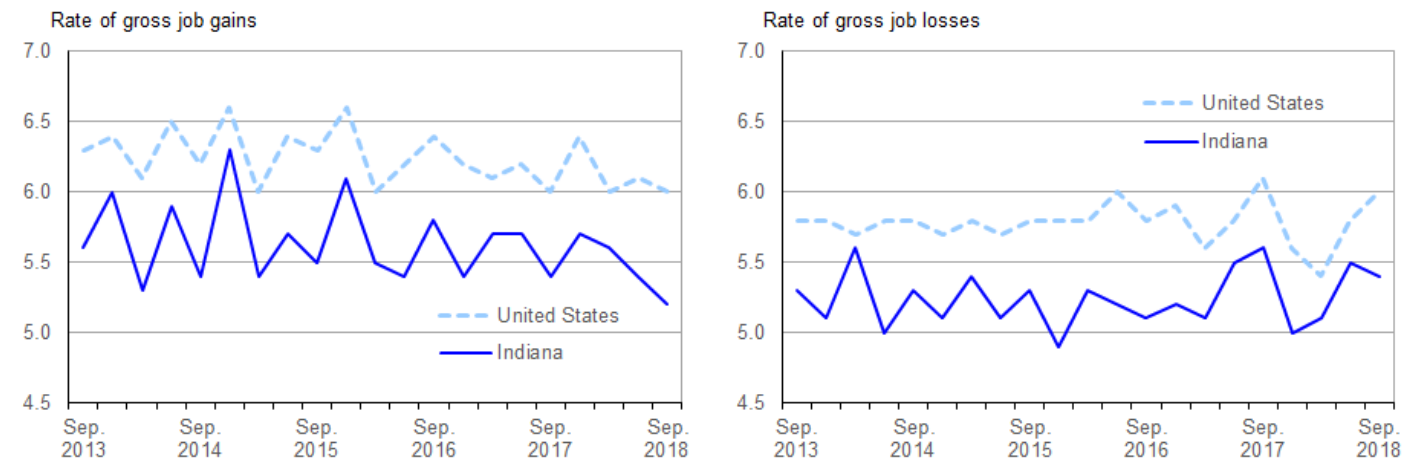


Source: U.S. Bureau of Labor Statistics.

The change in the number of jobs over time is the net result of increases and decreases in employment that occur at all businesses in the economy. Business Employment Dynamics (BED) statistics track these changes in employment at private business establishments from the third month of one quarter to the third month of the next. Gross job losses are the sum of increases in employment from expansions at existing establishments and the addition of new jobs at opening establishments. Gross job gains are the result of contractions in employment at existing establishments and the loss of jobs at closing establishments. The difference between the number of gross job losses and the number of gross job gains is the net change in employment. (See the [Technical Note](#) for more information.)

Gross job losses represented 5.4 percent of private sector employment in Indiana in the third quarter of 2018; nationally, gross job losses accounted for 6.0 percent of private sector employment. (See [chart 2](#).) Since the series inception in 1992, the rate of gross job losses in Indiana has been below the U.S. rate each quarter, with three exceptions. Gross job gains accounted for 5.2 percent of private sector employment in Indiana in the third quarter of 2018, lower than the national rate of 6.0 percent. Since the series began, Indiana’s rate of gross job gains has been at or below the national rate, with one exception.

Chart 2. Private sector gross job gains and losses as a percent of employment, United States and Indiana, September 2013–September 2018, seasonally adjusted



Source: U.S. Bureau of Labor Statistics.

During the third quarter of 2018, gross job losses exceeded gross job gains in nine industry sectors in Indiana. For example, within professional and business services, gross job losses exceeded gross job gains by 1,025. While almost 23,300 jobs were created by opening and expanding establishments in the industry, nearly 24,300 jobs were lost in closing and contracting establishments in the third quarter of 2018. In each of the eight remaining sectors with net employment losses, gross job losses exceeded gross job gains by less than 900. (See [table 1](#).)

Gross job gains exceeded gross job losses in two industry sectors in Indiana in the third quarter of 2018. Within transportation and warehousing, almost 7,300 jobs were created in opening and expanding establishments, and nearly 5,800 jobs were lost in closing and contracting establishments, resulting in a net gain of 1,505 jobs. In the wholesale trade sector, gross job gains exceeded gross losses by 678.

Indiana was among the five states in the East North Central Census division. Gross job losses exceeded gross job gains in all five states in the division in the third quarter of 2018. (See [table A](#).) Four of the five states had rates of gross job losses that were lower than the 6.0-percent national rate. In Michigan, the rate of gross job losses was higher than the national rate. All five states in the division had rates of gross job gains that were lower than the 6.0-percent national rate.

Additional statistics and other information

BED data for the states have been included in [table 2](#) of this release. For more information on the Business Employment Dynamics data, visit the BED web site at www.bls.gov/bdm/.

Table A. Private sector gross job gains and losses for the United States, East North Central Division, and East North Central states, September 2018, seasonally adjusted

Area	Gross job gains		Gross job losses		Net change	Net change as a percent of total employment
	Total	As a percent of total employment	Total	As a percent of total employment		
United States.....	7,448,000	6.0	7,421,000	6.0	27,000	0.0
East North Central ⁽¹⁾	992,584	—	1,083,980	—	-91,396	—
Illinois	289,306	5.6	295,943	5.7	-6,637	-0.1
Indiana.....	139,020	5.2	142,048	5.4	-3,028	-0.2
Michigan.....	190,601	5.0	232,016	6.2	-41,415	-1.2
Ohio.....	247,650	5.3	268,421	5.7	-20,771	-0.4
Wisconsin.....	126,007	5.1	145,552	5.9	-19,545	-0.8

Footnotes:

(1) Data were calculated for this release using published gross job gains and gross job losses for states located in the East North Central Census Division.

Note: Dash indicates data not available.

The Business Employment Dynamics release for fourth quarter 2018 is scheduled to be released on Wednesday, July 24, 2019.

Technical Note

The Business Employment Dynamics (BED) data are a product of a federal-state cooperative program known as Quarterly Census of Employment and Wages (QCEW). The BED data are compiled by the U.S. Bureau of Labor Statistics (BLS) from existing QCEW records. Most employers in the U.S. are required to file quarterly reports on the employment and wages of workers covered by unemployment insurance (UI) laws, and to pay quarterly UI taxes. The QCEW is based largely on quarterly UI reports which are sent by businesses to the State Workforce Agencies (SWAs). These UI reports are supplemented by two additional BLS data collections to render administrative data into economic statistics. Together these data comprise the QCEW and form the basis of the Bureau's establishment universe sampling frame.

In the BED program, the quarterly QCEW records are linked across quarters to provide a longitudinal history for each establishment. The linkage process allows the tracking of net employment changes at the establishment level, which in turn allows the estimation of jobs gained at opening and expanding establishments and jobs lost at closing and contracting establishments.

The change in the number of jobs over time is the net result of increases and decreases in employment that occur at all businesses in the economy. BED statistics track these changes in employment at private business establishments from the third month of one quarter to the third month of the next. Gross job losses are the sum of increases in employment from expansions at existing establishments and the addition of new jobs at opening establishments. Gross job gains are the result of contractions in employment at existing establishments and the loss of jobs at closing establishments. The difference between the number of gross jobs gained and the number of gross jobs lost is the net change in employment.

Gross job losses and gross job gains are expressed as rates by dividing their levels by the average of employment in the current and previous quarters. The rates are calculated for the components of gross job losses and gross job gains and then summed to form their respective totals. These rates can be added and subtracted just as their levels can. For instance, the difference between the gross job losses rate and the gross job gains rate is the net growth rate.

The formal definitions of employment changes are as follows:

Openings. These are either establishments with positive third month employment for the second time in the current quarter, with no links to the prior quarter, or with positive third month employment in the current quarter following zero employment in the previous quarter.

Expansions. These are establishments with positive employment in the third month in both the previous and current quarters, with a net increase in employment over this period.

Closings. These are either establishments with positive third month employment in the previous quarter, with no employment or zero employment reported in the current quarter.

Contractions. These are establishments with positive employment in the third month in both the previous and current quarters, with a net decrease in employment over this period.

Information in this release will be made available to sensory impaired individuals upon request. Voice phone: (202) 691-5200; Federal Relay Service: (800) 877-8339.

Table 1. Private sector gross job gains and losses by industry, Indiana, seasonally adjusted

Category	Gross job gains and job losses (3 months ended)					Gross job gains and job losses as a percent of employment (3 months ended)				
	Sept 2017	Dec. 2017	Mar. 2018	June 2018	Sept 2018	Sept 2017	Dec. 2017	Mar. 2018	June 2018	Sept 2018
Total private ⁽¹⁾										
Gross job gains	143,899	152,730	150,823	146,171	139,020	5.4	5.7	5.6	5.4	5.2
At expanding establishments	121,972	130,484	128,952	123,761	117,617	4.6	4.9	4.8	4.6	4.4
At opening establishments	21,927	22,246	21,871	22,410	21,403	0.8	0.8	0.8	0.8	0.8
Gross job losses	146,250	132,131	135,050	147,061	142,048	5.6	5.0	5.1	5.5	5.4
At contracting establishments	123,379	110,996	116,536	127,405	122,021	4.7	4.2	4.4	4.8	4.6
At closing establishments	22,871	21,135	18,514	19,656	20,027	0.9	0.8	0.7	0.7	0.8
Net employment change ⁽²⁾	-2,351	20,599	15,773	-890	-3,028	-0.2	0.7	0.5	-0.1	-0.2
Construction										
Gross job gains	13,389	12,988	13,203	12,957	12,471	9.7	9.3	9.3	9.1	8.9
At expanding establishments	11,319	10,762	11,103	11,128	10,662	8.2	7.7	7.8	7.8	7.6
At opening establishments	2,070	2,226	2,100	1,829	1,809	1.5	1.6	1.5	1.3	1.3
Gross job losses	12,645	13,095	11,953	11,745	12,798	9.1	9.4	8.4	8.3	9.1
At contracting establishments	10,835	11,310	10,247	10,068	10,642	7.8	8.1	7.2	7.1	7.6
At closing establishments	1,810	1,785	1,706	1,677	2,156	1.3	1.3	1.2	1.2	1.5
Net employment change ⁽²⁾	744	-107	1,250	1,212	-327	0.6	-0.1	0.9	0.8	-0.2
Manufacturing										
Gross job gains	14,521	18,838	16,717	16,187	14,557	2.8	3.5	3.1	3.0	2.7
At expanding establishments	13,555	17,818	16,068	15,175	13,583	2.6	3.3	3.0	2.8	2.5
At opening establishments	966	1,020	649	1,012	974	0.2	0.2	0.1	0.2	0.2
Gross job losses	14,953	11,008	13,480	15,023	15,362	2.8	2.1	2.5	2.8	2.8
At contracting establishments	14,016	10,165	12,597	14,066	14,588	2.6	1.9	2.3	2.6	2.7
At closing establishments	937	843	883	957	774	0.2	0.2	0.2	0.2	0.1
Net employment change ⁽²⁾	-432	7,830	3,237	1,164	-805	0.0	1.4	0.6	0.2	-0.1
Wholesale trade										
Gross job gains	5,488	5,376	5,402	5,770	5,890	4.5	4.5	4.5	4.8	4.9
At expanding establishments	4,600	4,390	4,550	4,743	5,017	3.8	3.7	3.8	3.9	4.2
At opening establishments	888	986	852	1,027	873	0.7	0.8	0.7	0.9	0.7
Gross job losses	5,248	5,073	4,586	5,364	5,212	4.4	4.3	3.8	4.5	4.3
At contracting establishments	4,216	3,934	3,505	4,212	4,201	3.5	3.3	2.9	3.5	3.5
At closing establishments	1,032	1,139	1,081	1,152	1,011	0.9	1.0	0.9	1.0	0.8
Net employment change ⁽²⁾	240	303	816	406	678	0.1	0.2	0.7	0.3	0.6
Retail trade										
Gross job gains	20,737	17,862	20,571	19,039	19,177	6.2	5.4	6.4	5.9	5.9
At expanding establishments	18,702	15,554	17,978	16,503	16,889	5.6	4.7	5.6	5.1	5.2
At opening establishments	2,035	2,308	2,593	2,536	2,288	0.6	0.7	0.8	0.8	0.7
Gross job losses	21,750	19,136	16,898	20,532	20,028	6.5	5.7	5.2	6.4	6.2
At contracting establishments	17,744	16,376	15,221	18,072	17,069	5.3	4.9	4.7	5.6	5.3
At closing establishments	4,006	2,760	1,677	2,460	2,959	1.2	0.8	0.5	0.8	0.9
Net employment change ⁽²⁾	-1,013	-1,274	3,673	-1,493	-851	-0.3	-0.3	1.2	-0.5	-0.3
Transportation and warehousing										
Gross job gains	5,966	8,229	6,667	6,944	7,255	4.9	6.7	4.9	5.1	5.3
At expanding establishments	5,237	7,523	6,006	6,215	6,408	4.3	6.1	4.4	4.6	4.7
At opening establishments	729	706	661	729	847	0.6	0.6	0.5	0.5	0.6
Gross job losses	5,676	5,746	8,300	6,287	5,750	4.6	4.7	6.2	4.7	4.3
At contracting establishments	4,902	4,784	7,774	5,605	4,959	4.0	3.9	5.8	4.2	3.7
At closing establishments	774	962	526	682	791	0.6	0.8	0.4	0.5	0.6
Net employment change ⁽²⁾	290	2,483	-1,633	657	1,505	0.3	2.0	-1.3	0.4	1.0
Information										
Gross job gains	1,085	1,475	1,187	1,366	1,182	3.5	4.8	3.9	4.6	4.1
At expanding establishments	782	1,191	950	955	961	2.5	3.9	3.1	3.2	3.3
At opening establishments	303	284	237	411	221	1.0	0.9	0.8	1.4	0.8
Gross job losses	1,789	1,459	2,069	1,722	1,743	5.8	4.7	6.8	5.8	6.0

Note: See footnotes at end of table.

Table 1. Private sector gross job gains and losses by industry, Indiana, seasonally adjusted - Continued

Category	Gross job gains and job losses (3 months ended)					Gross job gains and job losses as a percent of employment (3 months ended)				
	Sept 2017	Dec. 2017	Mar. 2018	June 2018	Sept 2018	Sept 2017	Dec. 2017	Mar. 2018	June 2018	Sept 2018
At contracting establishments	1,616	1,144	1,731	1,576	1,427	5.2	3.7	5.7	5.3	4.9
At closing establishments	173	315	338	146	316	0.6	1.0	1.1	0.5	1.1
Net employment change ⁽²⁾	-704	16	-882	-356	-561	-2.3	0.1	-2.9	-1.2	-1.9
Financial activities										
Gross job gains	6,646	6,411	5,798	6,777	6,013	5.1	4.9	4.3	5.1	4.5
At expanding establishments	5,113	4,855	4,329	5,456	4,644	3.9	3.7	3.2	4.1	3.5
At opening establishments	1,533	1,556	1,469	1,321	1,369	1.2	1.2	1.1	1.0	1.0
Gross job losses	6,407	6,097	5,878	6,083	6,139	4.9	4.6	4.4	4.6	4.6
At contracting establishments	5,020	4,728	4,590	4,674	4,678	3.8	3.6	3.4	3.5	3.5
At closing establishments	1,387	1,369	1,288	1,409	1,461	1.1	1.0	1.0	1.1	1.1
Net employment change ⁽²⁾	239	314	-80	694	-126	0.2	0.3	-0.1	0.5	-0.1
Professional and business services										
Gross job gains	25,588	29,082	26,278	25,345	23,253	7.6	8.6	7.6	7.4	6.8
At expanding establishments	21,180	24,744	21,973	20,846	18,773	6.3	7.3	6.4	6.1	5.5
At opening establishments	4,408	4,338	4,305	4,499	4,480	1.3	1.3	1.2	1.3	1.3
Gross job losses	25,536	22,936	24,969	27,780	24,278	7.6	6.7	7.2	8.1	7.1
At contracting establishments	21,180	18,753	21,441	24,012	20,885	6.3	5.5	6.2	7.0	6.1
At closing establishments	4,356	4,183	3,528	3,768	3,393	1.3	1.2	1.0	1.1	1.0
Net employment change ⁽²⁾	52	6,146	1,309	-2,435	-1,025	0.0	1.9	0.4	-0.7	-0.3
Education and health services										
Gross job gains	17,080	16,428	18,463	19,015	15,965	3.7	3.6	4.0	4.2	3.4
At expanding establishments	15,075	14,471	16,634	16,475	14,360	3.3	3.2	3.6	3.6	3.1
At opening establishments	2,005	1,957	1,829	2,540	1,605	0.4	0.4	0.4	0.6	0.3
Gross job losses	16,800	16,540	14,138	16,161	16,784	3.7	3.7	3.1	3.5	3.6
At contracting establishments	14,535	14,425	12,419	14,153	14,800	3.2	3.2	2.7	3.1	3.2
At closing establishments	2,265	2,115	1,719	2,008	1,984	0.5	0.5	0.4	0.4	0.4
Net employment change ⁽²⁾	280	-112	4,325	2,854	-819	0.0	-0.1	0.9	0.7	-0.2
Leisure and hospitality										
Gross job gains	25,590	27,165	28,285	24,322	25,210	8.3	8.8	9.1	7.8	8.2
At expanding establishments	19,988	21,894	22,503	19,362	19,671	6.5	7.1	7.2	6.2	6.4
At opening establishments	5,602	5,271	5,782	4,960	5,539	1.8	1.7	1.9	1.6	1.8
Gross job losses	26,771	24,146	24,714	27,998	25,387	8.7	7.8	8.0	9.0	8.3
At contracting establishments	22,122	19,808	20,715	24,026	21,833	7.2	6.4	6.7	7.7	7.1
At closing establishments	4,649	4,338	3,999	3,972	3,554	1.5	1.4	1.3	1.3	1.2
Net employment change ⁽²⁾	-1,181	3,019	3,571	-3,676	-177	-0.4	1.0	1.1	-1.2	-0.1
Other services ⁽³⁾										
Gross job gains	5,735	6,199	6,011	6,390	5,865	6.8	7.2	7.0	7.4	6.8
At expanding establishments	4,746	4,971	4,984	5,233	4,831	5.6	5.8	5.8	6.1	5.6
At opening establishments	989	1,228	1,027	1,157	1,034	1.2	1.4	1.2	1.3	1.2
Gross job losses	6,375	5,080	6,106	5,620	6,353	7.5	6.0	7.1	6.5	7.3
At contracting establishments	5,273	3,965	4,625	4,554	5,112	6.2	4.7	5.4	5.3	5.9
At closing establishments	1,102	1,115	1,481	1,066	1,241	1.3	1.3	1.7	1.2	1.4
Net employment change ⁽²⁾	-640	1,119	-95	770	-488	-0.7	1.2	-0.1	0.9	-0.5

Footnotes:

(1) Includes unclassified sector not shown separately.

(2) The net employment change is the difference between total gross job gains and total gross job losses. See the Technical Note for further information.

(3) Except public administration.

Table 2. Private sector gross job gains and losses as a percent of total employment by state, seasonally adjusted

Category	Gross job gains as a percent of employment (3 months ended)					Gross job losses as a percent of employment (3 months ended)				
	Sept. 2017	Dec. 2017	Mar. 2018	June 2018	Sept. 2018	Sept. 2017	Dec. 2017	Mar. 2018	June 2018	Sept. 2018
United States ⁽¹⁾	6.0	6.4	6.0	6.1	6.0	6.1	5.6	5.4	5.8	6.0
Alabama	6.0	6.0	6.0	5.8	5.9	5.8	5.4	5.3	5.7	5.9
Alaska	8.7	9.7	9.8	10.9	8.9	10.8	10.2	8.8	10.7	10.6
Arizona	6.6	6.3	6.0	6.0	6.6	5.2	5.3	5.3	5.9	5.0
Arkansas	5.8	6.1	5.4	5.0	6.0	5.5	5.1	5.0	5.6	5.5
California	6.5	6.9	6.4	6.7	6.5	6.3	6.0	5.9	6.3	6.2
Colorado	6.7	6.8	6.8	6.8	6.6	6.5	6.1	6.0	6.1	6.8
Connecticut	5.4	5.3	5.1	5.8	5.2	5.8	5.2	5.2	5.0	5.6
Delaware	6.4	7.0	7.1	6.5	5.6	6.6	6.4	5.9	6.0	6.6
District of Columbia	5.4	5.8	6.0	5.6	5.3	5.2	5.0	4.7	5.5	5.5
Florida	5.8	8.2	6.1	6.5	6.7	7.5	5.3	5.5	6.1	5.7
Georgia	6.2	6.9	6.5	6.2	6.7	6.1	5.6	5.6	6.4	6.2
Hawaii	5.4	5.1	5.0	5.2	5.1	5.1	4.7	4.8	5.5	5.5
Idaho	6.7	7.4	7.9	7.3	6.8	6.8	6.6	5.9	6.7	6.9
Illinois	5.6	6.0	5.7	5.6	5.6	6.0	5.3	5.1	5.5	5.7
Indiana	5.4	5.7	5.6	5.4	5.2	5.6	5.0	5.1	5.5	5.4
Iowa	5.5	5.9	5.5	5.7	5.3	5.7	5.3	5.3	5.4	5.7
Kansas	6.3	5.9	5.2	5.7	5.9	5.7	5.2	5.5	5.6	5.7
Kentucky	6.0	6.1	6.2	5.9	5.7	6.0	5.6	5.9	5.6	6.0
Louisiana	6.2	6.2	6.5	6.1	6.2	6.1	6.0	5.8	6.5	6.2
Maine	6.5	7.2	7.2	8.1	6.0	7.5	6.6	7.0	7.1	7.5
Maryland	6.3	6.2	6.3	6.0	6.3	6.2	6.3	5.7	5.8	6.6
Massachusetts	5.4	5.7	5.4	6.1	5.5	5.6	5.4	5.2	5.4	6.2
Michigan	5.3	5.7	5.7	5.6	5.0	6.0	5.4	4.6	5.1	6.2
Minnesota	5.3	5.8	5.3	5.8	5.4	5.7	5.5	5.0	5.3	5.7
Mississippi	5.9	6.3	5.5	5.7	5.8	5.9	5.4	5.8	6.0	5.7
Missouri	5.9	5.7	5.4	5.7	5.9	5.9	5.5	5.2	5.7	6.0
Montana	7.2	8.5	7.8	8.0	7.2	7.9	7.4	7.1	7.8	7.9
Nebraska	5.9	6.2	5.6	5.9	5.8	5.9	5.5	5.5	5.8	6.0
Nevada	6.2	6.6	6.5	6.1	6.7	5.8	5.2	5.4	5.8	5.6
New Hampshire	5.5	6.7	6.1	6.7	5.6	6.6	5.9	5.9	6.3	6.8
New Jersey	6.0	6.4	5.6	6.5	6.0	6.3	5.8	5.8	5.7	6.3
New Mexico	6.6	6.5	6.3	6.5	6.4	6.3	6.1	5.5	6.2	6.4
New York	6.3	6.2	6.2	6.3	6.1	6.1	5.8	5.6	5.8	6.4
North Carolina	6.0	6.3	6.2	6.1	5.6	6.0	5.5	5.2	5.5	6.5
North Dakota	6.7	6.8	7.0	6.7	6.6	6.7	6.8	6.3	6.2	6.6
Ohio	5.3	5.7	5.5	5.6	5.3	5.7	5.2	5.0	5.4	5.7
Oklahoma	6.6	6.4	6.1	6.3	6.6	6.0	5.8	5.5	6.5	6.1
Oregon	6.6	6.8	7.8	6.2	6.2	6.4	6.0	5.6	6.2	6.3
Pennsylvania	5.5	5.5	5.2	5.3	5.4	5.2	5.0	4.9	5.1	5.2
Rhode Island	6.0	6.6	6.3	6.3	6.2	6.3	6.0	6.1	6.1	6.4
South Carolina	5.8	7.0	5.9	7.5	5.8	6.2	5.3	4.7	6.5	6.5
South Dakota	5.8	6.4	6.4	6.1	5.9	5.9	5.7	5.9	6.1	5.8
Tennessee	5.4	5.9	5.0	5.5	5.8	5.2	4.9	4.8	5.1	5.2
Texas	5.9	6.4	5.8	5.9	5.9	5.8	5.3	5.1	5.2	5.4
Utah	7.0	7.0	7.4	6.9	7.3	6.3	5.9	6.0	6.3	6.5
Vermont	6.5	7.4	6.4	7.2	6.9	7.8	6.5	7.0	7.3	7.4
Virginia	5.9	6.3	5.8	6.1	5.6	6.2	5.5	5.2	5.8	6.3
Washington	6.4	6.9	7.2	7.3	6.1	6.4	6.0	5.7	6.3	6.3
West Virginia	6.7	6.3	6.8	6.8	7.0	6.3	6.1	5.8	6.4	6.4
Wisconsin	5.0	5.6	5.6	5.4	5.1	5.7	5.0	4.7	5.5	5.9
Wyoming	8.7	8.7	8.4	8.2	8.2	7.9	8.4	8.0	8.3	8.3
Puerto Rico	4.5	7.1	8.4	8.0	7.2	6.8	11.8	6.8	6.2	5.8
Virgin Islands	4.2	9.2	12.0	12.5	10.9	11.6	28.2	16.8	8.6	6.3

Note: See footnotes at end of table.

Footnotes

(1) Totals for the United States do not include data for Puerto Rico or the Virgin Islands.