



For Release: Thursday, September 12, 2019

19-1599-CHI

MIDWEST INFORMATION OFFICE: Chicago, Ill.

Technical information: (312) 353-1880 BLSInfoChicago@bls.gov www.bls.gov/regions/midwest

Media contact: (312) 353-1138

Consumer Price Index, Chicago-Naperville-Elgin — August 2019

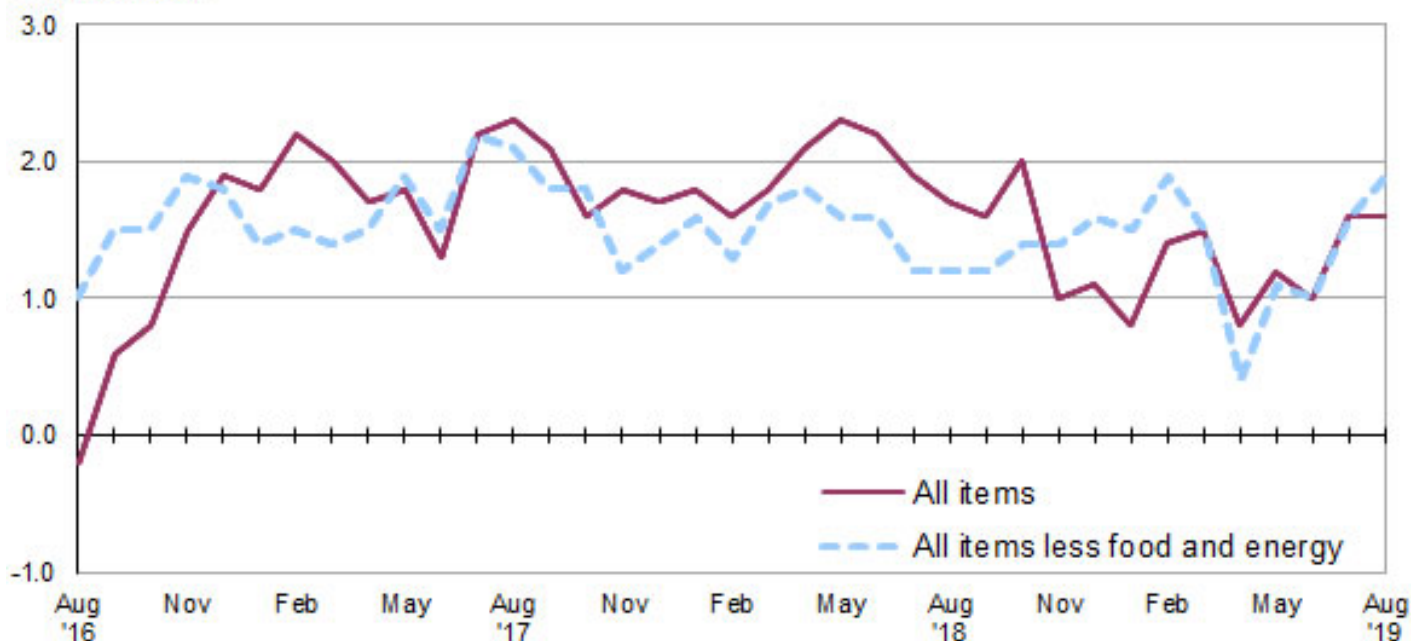
Local prices up 1.6 percent over the year

The Consumer Price Index for All Urban Consumers (CPI-U) in the Chicago-Naperville-Elgin area increased 0.2 percent in August, the U.S. Bureau of Labor Statistics reported today. Assistant Commissioner for Regional Operations Charlene Peiffer noted that the indexes for food and all items less food and energy rose 0.6 percent and 0.4 percent, respectively, while the energy index declined 3.3 percent over the month. Within the all items less food and energy category, prices were higher over the month for apparel and shelter. (Data in this report are not seasonally adjusted. Accordingly, month-to-month changes may reflect the impact of seasonal influences.)

Over the last 12 months, the Chicago area all items CPI-U increased 1.6 percent. (See [chart 1](#) and [table A.](#)) Over the year, the food index and the all items less food and energy index rose 2.5 percent and 1.9 percent, respectively. The energy index decreased 2.7 percent over the year. (See [table 1.](#))

Chart 1. Over-the-year percent change in CPI-U, Chicago-Naperville-Elgin, IL-IN-WI, August 2016–August 2019

Percent change



Source: U.S. Bureau of Labor Statistics.

Food

Food prices rose 0.6 percent in August. Of the two components within the food index, prices for food at home (groceries) increased 1.2 percent, while prices for food away from home (restaurant, cafeteria, and vending purchases) were unchanged. Within the food at home group, indexes were higher in August for candy and chewing gum, cheese and related products, and lettuce. Prices decreased for bacon, breakfast sausage, and related products; rice, pasta, cornmeal; and fresh fish and seafood.

From August 2018 to August 2019, the food index increased 2.5 percent. Over the year, grocery prices rose 2.0 percent, while costs for food away from home rose 3.1 percent.

Energy

The energy index declined 3.3 percent in August. Gasoline prices and utility (piped) gas service costs fell 7.5 percent and 0.8 percent, respectively, while costs for electricity rose 4.4 percent over the month.

Over the year, the Chicago area energy index fell 2.7 percent. From August 2018 to August 2019, gasoline prices were down 3.8 percent and utility (piped) gas service prices fell 7.5 percent. Electricity prices were 3.0 percent higher over the year.

All items less food and energy

The index for all items less food and energy increased 0.4 percent in August. Among the index's components, prices were higher over the month for apparel (5.9 percent) and shelter (0.1 percent).

Over the year, the index for all items less food and energy increased 1.9 percent. The shelter index was a contributing factor, rising 3.2 percent over the year.

Table A. Chicago-Naperville-Elgin, IL-IN-WI, CPI-U 1-month and 12-month percent changes, all items index, not seasonally adjusted

Month	2015		2016		2017		2018		2019	
	1-month	12-month	1-month	12-month	1-month	12-month	1-month	12-month	1-month	12-month
January.....	-0.2	0.4	0.8	0.9	0.7	1.8	0.8	1.8	0.6	0.8
February.....	0.0	-0.2	-0.2	0.7	0.1	2.2	0.0	1.6	0.6	1.4
March.....	0.7	-0.6	0.1	0.2	-0.1	2.0	0.0	1.8	0.1	1.5
April.....	0.1	-0.9	0.6	0.7	0.4	1.7	0.7	2.1	-0.1	0.8
May.....	0.3	-0.5	0.0	0.3	0.2	1.8	0.4	2.3	0.8	1.2
June.....	0.2	-0.7	0.5	0.7	0.0	1.3	-0.2	2.2	-0.4	1.0
July.....	-0.1	-0.5	-0.8	-0.1	0.0	2.2	-0.3	1.9	0.3	1.6
August.....	0.4	-0.1	0.2	-0.2	0.3	2.3	0.1	1.7	0.2	1.6
September.....	-0.3	-0.4	0.6	0.6	0.4	2.1	0.4	1.6		
October.....	-0.1	-0.2	0.1	0.8	-0.4	1.6	0.0	2.0		
November.....	-0.4	0.2	0.2	1.5	0.4	1.8	-0.6	1.0		
December.....	-0.6	0.0	-0.2	1.9	-0.4	1.7	-0.3	1.1		

The September 2019 Consumer Price Index for Chicago is scheduled to be released on Thursday, October 10, 2019.

Technical Note

The Consumer Price Index (CPI) is a measure of the average change in prices over time in a fixed market basket of goods and services. The Bureau of Labor Statistics publishes CPIs for two population groups: (1) a CPI for All Urban Consumers (CPI-U) which covers approximately 93 percent of the total population and (2) a CPI for Urban Wage Earners and Clerical Workers (CPI-W) which covers approximately 29 percent of the total population. The CPI-U includes, in addition to wage earners and clerical workers, groups such as professional, managerial, and technical workers, the self-employed, short-term workers, the unemployed, and retirees and others not in the labor force.

The CPI is based on prices of food, clothing, shelter, and fuels, transportation fares, charges for doctors' and dentists' services, drugs, and the other goods and services that people buy for day-to-day living. Each month, prices are collected in 75 urban areas across the country from about 5,000 housing units and approximately 22,000 retail establishments--department stores, supermarkets, hospitals, filling stations, and other types of stores and service establishments. All taxes directly associated with the purchase and use of items are included in the index.

The index measures price changes from a designated reference date (1982-84) that equals 100.0. An increase of 16.5 percent, for example, is shown as 116.5. This change can also be expressed in dollars as follows: the price of a base period "market basket" of goods and services in the CPI has risen from \$10 in 1982-84 to \$11.65. For further details see the CPI home page on the Internet at www.bls.gov/cpi and the BLS Handbook of Methods, Chapter 17, The Consumer Price Index, available on the Internet at www.bls.gov/opub/hom/pdf/homch17.pdf.

In calculating the index, price changes for the various items in each location are averaged together with weights that represent their importance in the spending of the appropriate population group. Local data are then combined to obtain a U.S. city average. Because the sample size of a local area is smaller, the local area index is subject to substantially more sampling and other measurement error than the national index. In addition, local indexes are not adjusted for seasonal influences. As a result, local area indexes show greater volatility than the national index, although their long-term trends are quite similar. **NOTE: Area indexes do not measure differences in the level of prices between cities; they only measure the average change in prices for each area since the base period.**

The **Chicago-Naperville-Elgin, IL-IN-WI, Core Based Statistical Area** covered in this release is comprised of Cook, DeKalb, DuPage, Grundy, Kane, Kendall, Lake, McHenry, and Will Counties in Illinois; Jasper, Lake, Newton, and Porter Counties in Indiana; and Kenosha County in Wisconsin.

Information in this release will be made available to sensory impaired individuals upon request. Voice phone: (202) 691-5200; Federal Relay Service: (800) 877-8339.

Table 1. Consumer Price Index for All Urban Consumers (CPI-U): Indexes and percent changes for selected periods Chicago-Naperville-Elgin, IL-IN-WI (1982-84=100 unless otherwise noted)

Item and Group	Indexes			Percent change from-		
	Jun. 2019	Jul. 2019	Aug. 2019	Aug. 2018	Jun. 2019	Jul. 2019
Expenditure category						
All items	240.835	241.589	241.985	1.6	0.5	0.2
All items (1967=100)	719.514	721.766	722.950	-	-	-
Food and beverages	253.122	252.270	253.774	2.5	0.3	0.6
Food	252.500	251.520	253.148	2.5	0.3	0.6
Food at home	236.262	234.052	236.940	2.0	0.3	1.2
Cereals and bakery products	267.266	267.071	266.783	3.3	-0.2	-0.1
Meats, poultry, fish and eggs	252.895	254.512	253.974	1.2	0.4	-0.2
Dairy and related products	215.922	209.450	210.922	2.0	-2.3	0.7
Fruits and vegetables	305.499	293.708	303.741	0.1	-0.6	3.4
Nonalcoholic beverages and beverage materials(1)	190.799	195.832	198.037	4.8	3.8	1.1
Other food at home	190.412	188.561	191.690	2.3	0.7	1.7
Food away from home	269.805	270.406	270.406	3.1	0.2	0.0
Alcoholic beverages	260.355	261.544	261.076	2.8	0.3	-0.2
Housing	253.584	253.640	254.162	2.5	0.2	0.2
Shelter	322.249	322.604	322.998	3.2	0.2	0.1
Rent of primary residence(2)	341.818	341.101	341.859	3.0	0.0	0.2
Owners' equiv. rent of residences(2)(3)	329.159	329.281	330.093	3.2	0.3	0.2
Owners' equiv. rent of primary residence(2)(3)	329.159	329.281	330.093	3.2	0.3	0.2
Fuels and utilities	208.079	205.648	209.312	0.1	0.6	1.8
Household energy	161.483	158.396	162.049	-1.3	0.4	2.3
Energy services(2)	164.669	161.510	165.266	-1.3	0.4	2.3
Electricity(2)	163.059	159.643	166.672	3.0	2.2	4.4
Utility (piped) gas service(2)	153.425	150.895	149.630	-7.5	-2.5	-0.8
Household furnishings and operations	88.537	89.009	88.350	-1.2	-0.2	-0.7
Apparel	81.729	82.728	87.596	6.4	7.2	5.9
Transportation	190.503	191.962	187.175	-1.2	-1.7	-2.5
Private transportation	187.099	189.508	184.545	-0.7	-1.4	-2.6
New and used motor vehicles(4)	96.132	96.360	95.717	0.1	-0.4	-0.7
New vehicles(1)	172.391	172.214	170.321	-0.4	-1.2	-1.1
Used cars and trucks(1)	272.060	275.335	277.934	2.7	2.2	0.9
Motor fuel	264.372	273.282	252.879	-3.7	-4.3	-7.5
Gasoline (all types)	261.790	270.619	250.320	-3.8	-4.4	-7.5
Gasoline, unleaded regular(5)	252.314	260.987	240.870	-3.9	-4.5	-7.7
Gasoline, unleaded midgrade(5)(6)	289.356	297.887	278.482	-3.0	-3.8	-6.5
Gasoline, unleaded premium(5)	284.370	292.398	276.318	-2.4	-2.8	-5.5
Motor vehicle insurance(1)	532.866	532.866	532.677	-0.4	0.0	0.0
Medical care	500.230	-	515.597	1.7	3.1	-
Recreation(4)	111.581	112.290	112.512	1.2	0.8	0.2
Education and communication(4)	140.907	141.408	141.593	-1.5	0.5	0.1
Tuition, other school fees, and childcare(1)	1,179.324	1,185.858	1,189.801	-0.6	0.9	0.3
Other goods and services	399.874	405.475	406.833	3.2	1.7	0.3
Commodity and service group						
All items	240.835	241.589	241.985	1.6	0.5	0.2
Commodities	168.957	169.839	169.280	1.1	0.2	-0.3
Commodities less food and beverages	127.146	128.539	127.333	0.1	0.1	-0.9
Nondurables less food and beverages	174.708	178.245	176.163	0.5	0.8	-1.2
Durables	84.356	84.163	83.655	-0.4	-0.8	-0.6
Services	309.162	309.782	311.116	1.9	0.6	0.4

Note: See footnotes at end of table.

Table 1. Consumer Price Index for All Urban Consumers (CPI-U): Indexes and percent changes for selected periods Chicago-Naperville-Elgin, IL-IN-WI (1982-84=100 unless otherwise noted) - Continued

Item and Group	Indexes			Percent change from-		
	Jun. 2019	Jul. 2019	Aug. 2019	Aug. 2018	Jun. 2019	Jul. 2019
Special aggregate indexes						
All items less medical care	229.712	230.275	230.239	1.6	0.2	0.0
All items less shelter	213.269	214.164	214.563	0.8	0.6	0.2
Commodities less food	131.776	133.187	131.976	0.2	0.2	-0.9
Nondurables	214.451	216.098	215.581	1.6	0.5	-0.2
Nondurables less food	180.372	183.841	181.810	0.7	0.8	-1.1
Services less rent of shelter(3)	311.035	311.966	314.212	0.4	1.0	0.7
Services less medical care services	295.200	295.446	295.963	1.8	0.3	0.2
Energy	202.364	204.485	197.746	-2.7	-2.3	-3.3
All items less energy	246.468	247.098	248.173	2.0	0.7	0.4
All items less food and energy	246.280	247.173	248.162	1.9	0.8	0.4

Footnotes

(1) Index on a December 1977=100 base.

(2) This index series was calculated using a Laspeyres estimator. All other item stratum index series were calculated using a geometric means estimator.

(3) Index on a December 1982=100 base.

(4) Indexes on a December 1997=100 base.

(5) Special index based on a substantially smaller sample.

(6) Index on a December 1993=100 base.

- Data not available.

Note: Index applies to a month as a whole, not to any specific date. Data not seasonally adjusted.