



For Release: Thursday, October 10, 2019

19-1719-CHI

MIDWEST INFORMATION OFFICE: Chicago, Ill.

Technical information: (312) 353-1880 BLSInfoChicago@bls.gov www.bls.gov/regions/midwest

Media contact: (312) 353-1138

Consumer Price Index, Chicago-Naperville-Elgin — September 2019

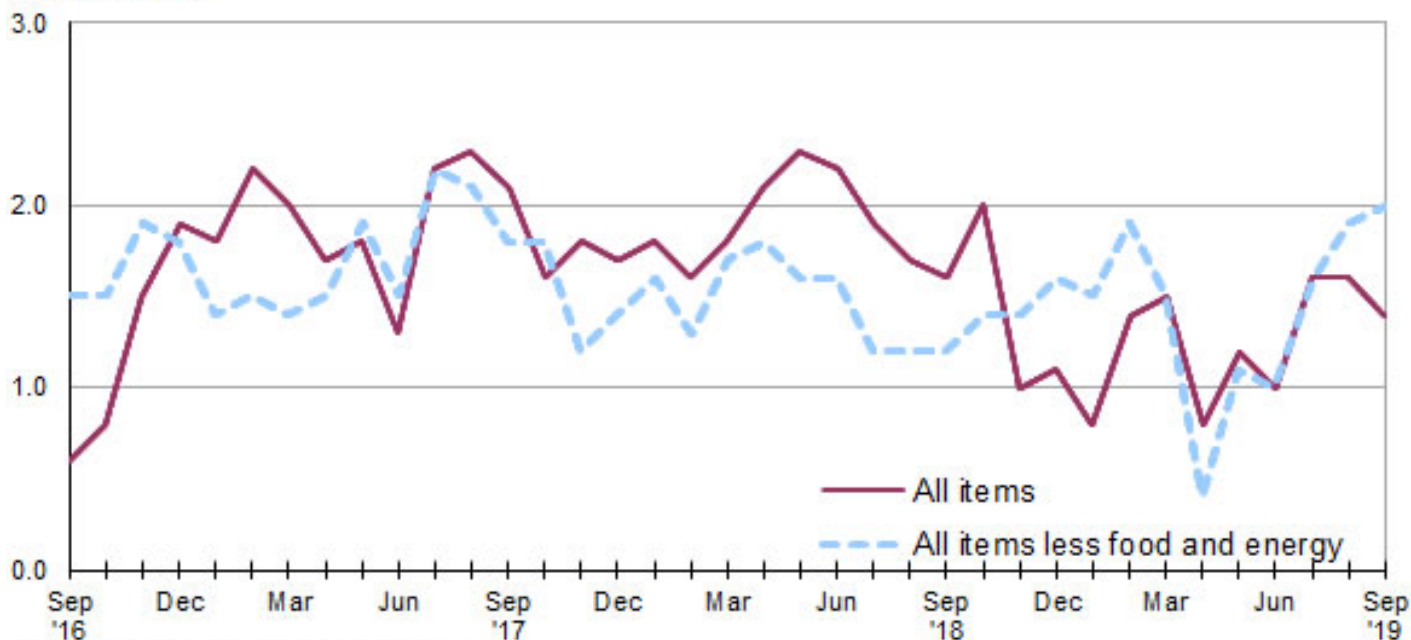
Local prices rose 1.4 percent over the year

The Consumer Price Index for All Urban Consumers (CPI-U) in the Chicago-Naperville-Elgin area increased 0.2 percent in September, the U.S. Bureau of Labor Statistics reported today. Assistant Commissioner for Regional Operations Charlene Peiffer noted that the indexes for food and all items less food and energy each rose 0.4 percent, while the energy index declined 2.6 percent over the month. Within the all items less food and energy category, prices were higher over the month for shelter and apparel. (Data in this report are not seasonally adjusted. Accordingly, month-to-month changes may reflect the impact of seasonal influences.)

Over the last 12 months, the Chicago area all items CPI-U increased 1.4 percent. (See [chart 1](#) and [table A](#).) Over the year, the food index and the all items less food and energy index rose 1.8 percent and 2.0 percent, respectively. The energy index decreased 5.2 percent over the year. (See [table 1](#).)

Chart 1. Over-the-year percent change in CPI-U, Chicago-Naperville-Elgin, IL-IN-WI, September 2016–September 2019

Percent change



Food

Food prices rose 0.4 percent in September. Of the two components within the food index, prices for food at home (groceries) increased 0.7 percent, while prices for food away from home (restaurant, cafeteria, and vending purchases) rose 0.2 percent. Within the food at home group, indexes were higher in September for other fresh vegetables; bacon, breakfast sausage, and related products; and eggs. Prices decreased for other dairy and related products and processed fish and seafood.

From September 2018 to September 2019, the food index increased 1.8 percent. Over the year, grocery prices rose 1.1 percent, while costs for food away from home rose 2.7 percent.

Energy

The energy index declined 2.6 percent in September. Among the index's components, prices were lower for gasoline (-2.3 percent), utility (piped) gas service (-4.5 percent), and electricity (-2.2 percent).

Over the year, the Chicago area energy index fell 5.2 percent. From September 2018 to September 2019, gasoline prices were down 6.6 percent and utility (piped) gas service prices fell 11.4 percent. Electricity prices were 2.3 percent higher over the year.

All items less food and energy

The index for all items less food and energy increased 0.4 percent in September. Among the index's components, prices were higher over the month for shelter (0.6 percent) and apparel (4.9 percent).

Over the year, the index for all items less food and energy increased 2.0 percent. The shelter index was a contributing factor, rising 3.4 percent over the year.

Table A. Chicago-Naperville-Elgin, IL-IN-WI, CPI-U 1-month and 12-month percent changes, all items index, not seasonally adjusted

Month	2015		2016		2017		2018		2019	
	1-month	12-month	1-month	12-month	1-month	12-month	1-month	12-month	1-month	12-month
January.....	-0.2	0.4	0.8	0.9	0.7	1.8	0.8	1.8	0.6	0.8
February.....	0.0	-0.2	-0.2	0.7	0.1	2.2	0.0	1.6	0.6	1.4
March.....	0.7	-0.6	0.1	0.2	-0.1	2.0	0.0	1.8	0.1	1.5
April.....	0.1	-0.9	0.6	0.7	0.4	1.7	0.7	2.1	-0.1	0.8
May.....	0.3	-0.5	0.0	0.3	0.2	1.8	0.4	2.3	0.8	1.2
June.....	0.2	-0.7	0.5	0.7	0.0	1.3	-0.2	2.2	-0.4	1.0
July.....	-0.1	-0.5	-0.8	-0.1	0.0	2.2	-0.3	1.9	0.3	1.6
August.....	0.4	-0.1	0.2	-0.2	0.3	2.3	0.1	1.7	0.2	1.6
September.....	-0.3	-0.4	0.6	0.6	0.4	2.1	0.4	1.6	0.2	1.4
October.....	-0.1	-0.2	0.1	0.8	-0.4	1.6	0.0	2.0		
November.....	-0.4	0.2	0.2	1.5	0.4	1.8	-0.6	1.0		
December.....	-0.6	0.0	-0.2	1.9	-0.4	1.7	-0.3	1.1		

The October 2019 Consumer Price Index for Chicago is scheduled to be released on Wednesday, November 13, 2019.

Technical Note

The Consumer Price Index (CPI) is a measure of the average change in prices over time in a fixed market basket of goods and services. The Bureau of Labor Statistics publishes CPIs for two population groups: (1) a CPI for All Urban Consumers (CPI-U) which covers approximately 93 percent of the total population and (2) a CPI for Urban Wage Earners and Clerical Workers (CPI-W) which covers approximately 29 percent of the total population. The CPI-U includes, in addition to wage earners and clerical workers, groups such as professional, managerial, and technical workers, the self-employed, short-term workers, the unemployed, and retirees and others not in the labor force.

The CPI is based on prices of food, clothing, shelter, and fuels, transportation fares, charges for doctors' and dentists' services, drugs, and the other goods and services that people buy for day-to-day living. Each month, prices are collected in 75 urban areas across the country from about 5,000 housing units and approximately 22,000 retail establishments--department stores, supermarkets, hospitals, filling stations, and other types of stores and service establishments. All taxes directly associated with the purchase and use of items are included in the index.

The index measures price changes from a designated reference date (1982-84) that equals 100.0. An increase of 16.5 percent, for example, is shown as 116.5. This change can also be expressed in dollars as follows: the price of a base period "market basket" of goods and services in the CPI has risen from \$10 in 1982-84 to \$11.65. For further details see the CPI home page on the Internet at www.bls.gov/cpi and the BLS Handbook of Methods, Chapter 17, The Consumer Price Index, available on the Internet at www.bls.gov/opub/hom/pdf/homch17.pdf.

In calculating the index, price changes for the various items in each location are averaged together with weights that represent their importance in the spending of the appropriate population group. Local data are then combined to obtain a U.S. city average. Because the sample size of a local area is smaller, the local area index is subject to substantially more sampling and other measurement error than the national index. In addition, local indexes are not adjusted for seasonal influences. As a result, local area indexes show greater volatility than the national index, although their long-term trends are quite similar. **NOTE: Area indexes do not measure differences in the level of prices between cities; they only measure the average change in prices for each area since the base period.**

The **Chicago-Naperville-Elgin, IL-IN-WI, Core Based Statistical Area** covered in this release is comprised of Cook, DeKalb, DuPage, Grundy, Kane, Kendall, Lake, McHenry, and Will Counties in Illinois; Jasper, Lake, Newton, and Porter Counties in Indiana; and Kenosha County in Wisconsin.

Information in this release will be made available to sensory impaired individuals upon request. Voice phone: (202) 691-5200; Federal Relay Service: (800) 877-8339.

Table 1. Consumer Price Index for All Urban Consumers (CPI-U): Indexes and percent changes for selected periods Chicago-Naperville-Elgin, IL-IN-WI (1982-84=100 unless otherwise noted)

Item and Group	Indexes			Percent change from-		
	Jul. 2019	Aug. 2019	Sep. 2019	Sep. 2018	Jul. 2019	Aug. 2019
Expenditure category						
All items	241.589	241.985	242.393	1.4	0.3	0.2
All items (1967=100)	721.766	722.950	724.170	-	-	-
Food and beverages	252.270	253.774	254.636	1.7	0.9	0.3
Food	251.520	253.148	254.249	1.8	1.1	0.4
Food at home	234.052	236.940	238.548	1.1	1.9	0.7
Cereals and bakery products	267.071	266.783	268.234	1.8	0.4	0.5
Meats, poultry, fish and eggs	254.512	253.974	252.913	-1.1	-0.6	-0.4
Dairy and related products	209.450	210.922	210.248	0.1	0.4	-0.3
Fruits and vegetables	293.708	303.741	315.429	4.3	7.4	3.8
Nonalcoholic beverages and beverage materials(1)	195.832	198.037	198.611	3.5	1.4	0.3
Other food at home	188.561	191.690	191.204	-0.4	1.4	-0.3
Food away from home	270.406	270.406	270.847	2.7	0.2	0.2
Alcoholic beverages	261.544	261.076	258.107	0.3	-1.3	-1.1
Housing	253.640	254.162	254.878	2.4	0.5	0.3
Shelter	322.604	322.998	324.837	3.4	0.7	0.6
Rent of primary residence(2)	341.101	341.859	342.622	3.0	0.4	0.2
Owners' equiv. rent of residences(2)(3)	329.281	330.093	331.038	3.2	0.5	0.3
Owners' equiv. rent of primary residence(2)(3)	329.281	330.093	331.038	3.2	0.5	0.3
Fuels and utilities	205.648	209.312	204.432	-1.6	-0.6	-2.3
Household energy	158.396	162.049	157.115	-3.4	-0.8	-3.0
Energy services(2)	161.510	165.266	160.195	-3.4	-0.8	-3.1
Electricity(2)	159.643	166.672	163.074	2.3	2.1	-2.2
Utility (piped) gas service(2)	150.895	149.630	142.855	-11.4	-5.3	-4.5
Household furnishings and operations	89.009	88.350	88.852	-2.6	-0.2	0.6
Apparel	82.728	87.596	91.865	6.6	11.0	4.9
Transportation	191.962	187.175	186.423	-1.2	-2.9	-0.4
Private transportation	189.508	184.545	183.615	-1.3	-3.1	-0.5
New and used motor vehicles(4)	96.360	95.717	95.349	0.4	-1.0	-0.4
New vehicles(1)	172.214	170.321	171.067	0.4	-0.7	0.4
Used cars and trucks(1)	275.335	277.934	267.052	3.5	-3.0	-3.9
Motor fuel	273.282	252.879	247.120	-6.6	-9.6	-2.3
Gasoline (all types)	270.619	250.320	244.611	-6.6	-9.6	-2.3
Gasoline, unleaded regular(5)	260.987	240.870	235.512	-6.7	-9.8	-2.2
Gasoline, unleaded midgrade(5)(6)	297.887	278.482	270.997	-5.7	-9.0	-2.7
Gasoline, unleaded premium(5)	292.398	276.318	268.770	-5.4	-8.1	-2.7
Motor vehicle insurance(1)	532.866	532.677	531.302	-2.3	-0.3	-0.3
Medical care	-	515.597	507.079	0.3	-	-1.7
Recreation(4)	112.290	112.512	113.185	0.9	0.8	0.6
Education and communication(4)	141.408	141.593	141.582	-0.4	0.1	0.0
Tuition, other school fees, and childcare(1) ..	1,185.858	1,189.801	1,196.376	2.5	0.9	0.6
Other goods and services	405.475	406.833	409.974	4.1	1.1	0.8
Commodity and service group						
All items	241.589	241.985	242.393	1.4	0.3	0.2
Commodities	169.839	169.280	169.791	0.5	0.0	0.3
Commodities less food and beverages	128.539	127.333	127.685	-0.4	-0.7	0.3
Nondurables less food and beverages	178.245	176.163	176.737	0.3	-0.8	0.3
Durables	84.163	83.655	83.826	-1.3	-0.4	0.2
Services	309.782	311.116	311.419	2.0	0.5	0.1

Note: See footnotes at end of table.

Table 1. Consumer Price Index for All Urban Consumers (CPI-U): Indexes and percent changes for selected periods Chicago-Naperville-Elgin, IL-IN-WI (1982-84=100 unless otherwise noted) - Continued

Item and Group	Indexes			Percent change from-		
	Jul. 2019	Aug. 2019	Sep. 2019	Sep. 2018	Jul. 2019	Aug. 2019
Special aggregate indexes						
All items less medical care	230.275	230.239	231.040	1.5	0.3	0.3
All items less shelter	214.164	214.563	214.474	0.4	0.1	0.0
Commodities less food	133.187	131.976	132.268	-0.4	-0.7	0.2
Nondurables	216.098	215.581	216.299	1.0	0.1	0.3
Nondurables less food	183.841	181.810	182.231	0.3	-0.9	0.2
Services less rent of shelter(3)	311.966	314.212	312.864	0.3	0.3	-0.4
Services less medical care services	295.446	295.963	296.916	2.1	0.5	0.3
Energy	204.485	197.746	192.558	-5.2	-5.8	-2.6
All items less energy	247.098	248.173	249.115	2.0	0.8	0.4
All items less food and energy	247.173	248.162	249.081	2.0	0.8	0.4

Footnotes

(1) Index on a December 1977=100 base.

(2) This index series was calculated using a Laspeyres estimator. All other item stratum index series were calculated using a geometric means estimator.

(3) Index on a December 1982=100 base.

(4) Indexes on a December 1997=100 base.

(5) Special index based on a substantially smaller sample.

(6) Index on a December 1993=100 base.

- Data not available.

Note: Index applies to a month as a whole, not to any specific date. Data not seasonally adjusted.