



**For Release: Sunday, June 02, 2019**

**19-772-CHI**

MIDWEST INFORMATION OFFICE: Chicago, Ill.

Technical information: (312) 353-1880 BLSInfoChicago@bls.gov [www.bls.gov/regions/midwest](http://www.bls.gov/regions/midwest)

Media contact: (312) 353-1138

## Consumer Price Index, Chicago-Naperville-Elgin — April 2019

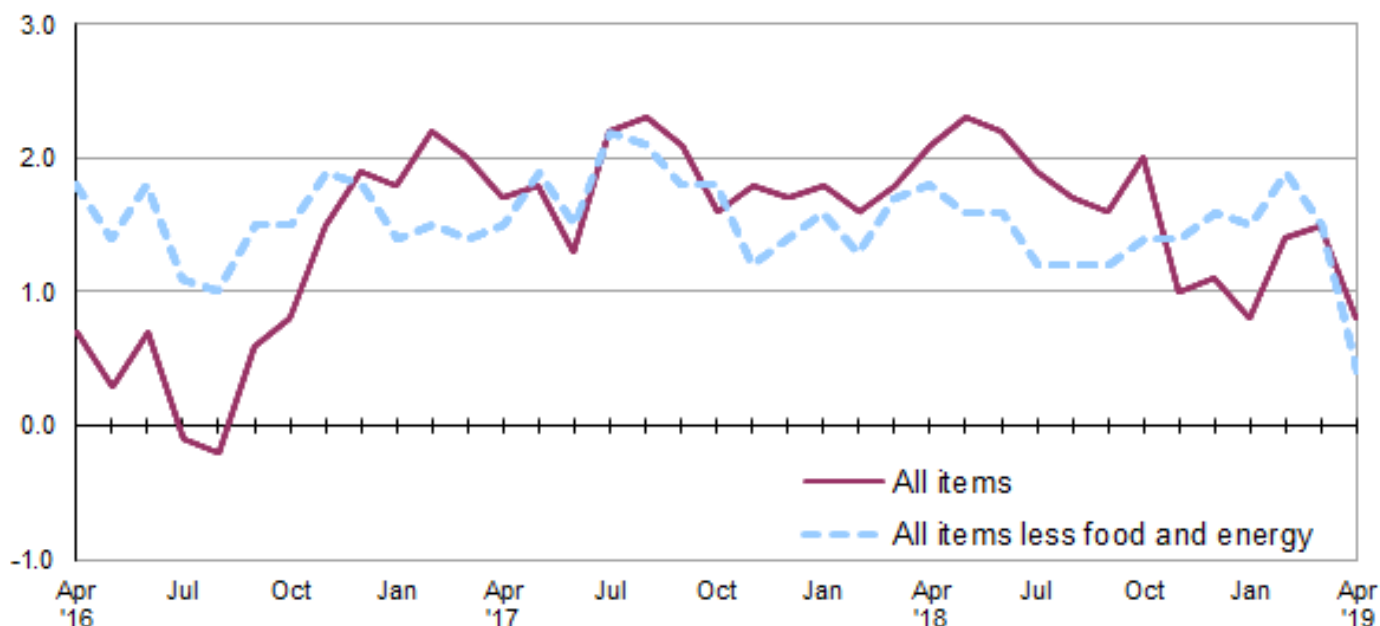
### Local prices rose 0.8 percent over the year

The Consumer Price Index for All Urban Consumers (CPI-U) in the Chicago-Naperville-Elgin area fell 0.1 percent in April, the U.S. Bureau of Labor Statistics reported today. Assistant Commissioner for Regional Operations Charlene Peiffer noted that food prices rose 0.1 percent and the energy index increased 6.5 percent in April. The all items less food and energy index decreased 0.7 percent over the month. Within the all items less food and energy category, prices were lower over the month for medical care, motor vehicle insurance, and recreation; while shelter prices increased. (Data in this report are not seasonally adjusted. Accordingly, month-to-month changes may reflect the impact of seasonal influences.)

Over the last 12 months, the Chicago area all items CPI-U increased 0.8 percent. (See [chart 1](#) and [table A](#).) Over the year, the energy index rose 3.4 percent. The increase in the energy index was primarily due to higher gasoline prices and electricity costs. The food index and the all items less food and energy index rose 1.7 percent and 0.4 percent, respectively, over the year. (See [table 1](#).)

**Chart 1. Over-the-year percent change in CPI-U, Chicago-Naperville-Elgin, IL-IN-WI, April 2016–April 2019**

Percent change



Source: U.S. Bureau of Labor Statistics.

## Food

Food prices rose 0.1 percent in April. Of the two components within the food index, prices for food at home (groceries) decreased 0.4 percent, while prices for food away from home (restaurant, cafeteria, and vending purchases) increased 0.6 percent. Within the food at home group, indexes were higher in April for nonfrozen noncarbonated juices and drinks; fresh fish and seafood; and rice, pasta, and cornmeal; while lower for candy and chewing gum; citrus fruits; and frozen fruits and vegetables.

From April 2018 to April 2019, the food index increased 1.7 percent. Over the year, grocery prices decreased 0.2 percent, while costs for food away from home rose 3.9 percent.

## Energy

The energy index increased 6.5 percent in April. During the same period, gasoline prices rose 11.1 percent. In April, electricity costs rose 2.7 percent, while utility (piped) gas service costs fell 1.6 percent.

Over the year, the Chicago area energy index rose 3.4 percent. From April 2018 to April 2019, gasoline prices and electricity prices increased 5.4 percent and 6.6 percent, respectively. Utility (piped) gas service costs fell 7.8 percent over the year.

## All items less food and energy

The index for all items less food and energy declined 0.7 percent in April. Among the index's components, prices were lower over the month for medical care (-6.3 percent), motor vehicle insurance (-3.9 percent), and recreation (-0.9 percent); while shelter rose (0.3 percent).

Over the year, the index for all items less food and energy increased 0.4 percent. Increases in the indexes for shelter (2.8 percent) and other goods and services (3.3 percent) over the year were contributing factors.

**Table A. Chicago-Naperville-Elgin, IL-IN-WI, CPI-U 1-month and 12-month percent changes, all items index, not seasonally adjusted**

Month	2015		2016		2017		2018		2019	
	1-month	12-month	1-month	12-month	1-month	12-month	1-month	12-month	1-month	12-month
January.....	-0.2	0.4	0.8	0.9	0.7	1.8	0.8	1.8	0.6	0.8
February.....	0.0	-0.2	-0.2	0.7	0.1	2.2	0.0	1.6	0.6	1.4
March.....	0.7	-0.6	0.1	0.2	-0.1	2.0	0.0	1.8	0.1	1.5
April.....	0.1	-0.9	0.6	0.7	0.4	1.7	0.7	2.1	-0.1	0.8
May.....	0.3	-0.5	0.0	0.3	0.2	1.8	0.4	2.3		
June.....	0.2	-0.7	0.5	0.7	0.0	1.3	-0.2	2.2		
July.....	-0.1	-0.5	-0.8	-0.1	0.0	2.2	-0.3	1.9		
August.....	0.4	-0.1	0.2	-0.2	0.3	2.3	0.1	1.7		
September.....	-0.3	-0.4	0.6	0.6	0.4	2.1	0.4	1.6		
October.....	-0.1	-0.2	0.1	0.8	-0.4	1.6	0.0	2.0		
November.....	-0.4	0.2	0.2	1.5	0.4	1.8	-0.6	1.0		
December.....	-0.6	0.0	-0.2	1.9	-0.4	1.7	-0.3	1.1		

**The May 2019 Consumer Price Index for Chicago is scheduled to be released on Wednesday, June 12, 2019.**

## Technical Note

The Consumer Price Index (CPI) is a measure of the average change in prices over time in a fixed market basket of goods and services. The Bureau of Labor Statistics publishes CPIs for two population groups: (1) a CPI for All Urban Consumers (CPI-U) which covers approximately 93 percent of the total population and (2) a CPI for Urban Wage Earners and Clerical Workers (CPI-W) which covers approximately 29 percent of the total population. The CPI-U includes, in addition to wage earners and clerical workers, groups such as professional, managerial, and technical workers, the self-employed, short-term workers, the unemployed, and retirees and others not in the labor force.

The CPI is based on prices of food, clothing, shelter, and fuels, transportation fares, charges for doctors' and dentists' services, drugs, and the other goods and services that people buy for day-to-day living. Each month, prices are collected in 75 urban areas across the country from about 5,000 housing units and approximately 22,000 retail establishments--department stores, supermarkets, hospitals, filling stations, and other types of stores and service establishments. All taxes directly associated with the purchase and use of items are included in the index.

The index measures price changes from a designated reference date (1982-84) that equals 100.0. An increase of 16.5 percent, for example, is shown as 116.5. This change can also be expressed in dollars as follows: the price of a base period "market basket" of goods and services in the CPI has risen from \$10 in 1982-84 to \$11.65. For further details see the CPI home page on the Internet at [www.bls.gov/cpi](http://www.bls.gov/cpi) and the BLS Handbook of Methods, Chapter 17, The Consumer Price Index, available on the Internet at [www.bls.gov/opub/hom/pdf/homch17.pdf](http://www.bls.gov/opub/hom/pdf/homch17.pdf).

In calculating the index, price changes for the various items in each location are averaged together with weights that represent their importance in the spending of the appropriate population group. Local data are then combined to obtain a U.S. city average. Because the sample size of a local area is smaller, the local area index is subject to substantially more sampling and other measurement error than the national index. In addition, local indexes are not adjusted for seasonal influences. As a result, local area indexes show greater volatility than the national index, although their long-term trends are quite similar. **NOTE: Area indexes do not measure differences in the level of prices between cities; they only measure the average change in prices for each area since the base period.**

The **Chicago-Naperville-Elgin, IL-IN-WI, Core Based Statistical Area** covered in this release is comprised of Cook, DeKalb, DuPage, Grundy, Kane, Kendall, Lake, McHenry, and Will Counties in Illinois; Jasper, Lake, Newton, and Porter Counties in Indiana; and Kenosha County in Wisconsin.

Information in this release will be made available to sensory impaired individuals upon request. Voice phone: (202) 691-5200; Federal Relay Service: (800) 877-8339.

**Table 1. Consumer Price Index for All Urban Consumers (CPI-U): Indexes and percent changes for selected periods Chicago-Naperville-Elgin, IL-IN-WI (1982-84=100 unless otherwise noted)**

Item and Group	Indexes			Percent change from-		
	Feb. 2019	Mar. 2019	Apr. 2019	Apr. 2018	Feb. 2019	Mar. 2019
<b>Expenditure category</b>						
All items .....	239.669	240.019	239.726	0.8	0.0	-0.1
All items (1967=100) .....	716.030	717.078	716.200	-	-	-
Food and beverages .....	253.094	250.878	251.158	1.6	-0.8	0.1
Food .....	252.424	250.201	250.419	1.7	-0.8	0.1
Food at home .....	239.795	235.401	234.449	-0.2	-2.2	-0.4
Cereals and bakery products .....	266.273	260.574	262.630	0.2	-1.4	0.8
Meats, poultry, fish and eggs .....	256.487	251.520	253.935	-0.5	-1.0	1.0
Dairy and related products .....	213.362	210.761	211.584	-0.5	-0.8	0.4
Fruits and vegetables .....	323.345	310.498	303.830	0.7	-6.0	-2.1
Nonalcoholic beverages and beverage materials(1) .....	196.862	192.026	192.811	1.6	-2.1	0.4
Other food at home .....	189.499	189.781	187.316	-1.2	-1.2	-1.3
Food away from home .....	265.129	265.703	267.410	3.9	0.9	0.6
Alcoholic beverages .....	261.104	259.026	260.275	-0.5	-0.3	0.5
Housing .....	251.967	251.639	252.323	2.2	0.1	0.3
Shelter .....	318.536	319.278	320.302	2.8	0.6	0.3
Rent of primary residence(2) .....	337.025	338.592	339.272	3.0	0.7	0.2
Owners' equiv. rent of residences(2)(3) .....	325.373	326.161	326.744	3.2	0.4	0.2
Owners' equiv. rent of primary residence(2)(3) .....	325.373	326.161	326.744	3.2	0.4	0.2
Fuels and utilities .....	207.556	205.512	206.878	2.2	-0.3	0.7
Household energy .....	162.038	158.545	160.210	0.8	-1.1	1.1
Energy services(2) .....	165.209	161.618	163.345	0.8	-1.1	1.1
Electricity(2) .....	163.432	163.355	167.786	6.6	2.7	2.7
Utility (piped) gas service(2) .....	154.160	145.803	143.495	-7.8	-6.9	-1.6
Household furnishings and operations .....	91.693	89.545	89.027	-3.1	-2.9	-0.6
Apparel .....	88.446	86.560	85.949	-3.6	-2.8	-0.7
Transportation .....	181.862	187.012	192.147	1.8	5.7	2.7
Private transportation .....	178.381	183.529	188.458	1.9	5.6	2.7
New and used motor vehicles(4) .....	97.292	95.755	96.359	0.8	-1.0	0.6
New vehicles(1) .....	176.023	174.440	173.934	0.8	-1.2	-0.3
Used cars and trucks(1) .....	266.241	269.512	270.140	0.7	1.5	0.2
Motor fuel .....	213.190	243.864	270.769	5.4	27.0	11.0
Gasoline (all types) .....	210.828	241.378	268.170	5.4	27.2	11.1
Gasoline, unleaded regular(5) .....	202.427	232.376	258.596	5.5	27.7	11.3
Gasoline, unleaded midgrade(5) (6) .....	237.395	267.596	295.800	5.4	24.6	10.5
Gasoline, unleaded premium(5) .....	237.378	265.458	289.804	4.5	22.1	9.2
Motor vehicle insurance(1) .....	554.435	552.335	530.637	-1.2	-4.3	-3.9
Medical care .....	509.601	506.633	474.623	-4.9	-6.9	-6.3
Recreation(4) .....	113.046	112.794	111.791	-1.0	-1.1	-0.9
Education and communication(4) .....	142.033	141.432	140.647	-2.1	-1.0	-0.6
Tuition, other school fees, and childcare(1) .....	1,175.261	1,175.303	1,175.303	-0.8	0.0	0.0
Other goods and services .....	393.986	402.569	403.238	3.3	2.3	0.2
<b>Commodity and service group</b>						
All items .....	239.669	240.019	239.726	0.8	0.0	-0.1
Commodities .....	167.323	168.279	170.117	0.9	1.7	1.1
Commodities less food and beverages .....	125.104	127.048	129.262	0.6	3.3	1.7
Nondurables less food and beverages .....	167.176	173.134	178.853	1.8	7.0	3.3
Durables .....	86.256	85.281	84.908	-1.2	-1.6	-0.4
Services .....	308.469	308.220	305.826	0.6	-0.9	-0.8

Note: See footnotes at end of table.

**Table 1. Consumer Price Index for All Urban Consumers (CPI-U): Indexes and percent changes for selected periods Chicago-Naperville-Elgin, IL-IN-WI (1982-84=100 unless otherwise noted) - Continued**

Item and Group	Indexes			Percent change from-		
	Feb. 2019	Mar. 2019	Apr. 2019	Apr. 2018	Feb. 2019	Mar. 2019
<b>Special aggregate indexes</b>						
All items less medical care .....	228.082	228.578	229.677	1.3	0.7	0.5
All items less shelter .....	212.988	213.203	212.448	-0.3	-0.3	-0.4
Commodities less food .....	129.757	131.652	133.882	0.5	3.2	1.7
Nondurables .....	210.112	212.536	215.946	1.7	2.8	1.6
Nondurables less food .....	173.133	178.793	184.371	1.6	6.5	3.1
Services less rent of shelter <sup>(3)</sup> .....	313.582	312.249	306.055	-1.7	-2.4	-2.0
Services less medical care services .....	293.842	293.726	294.078	1.6	0.1	0.1
Energy .....	180.717	191.949	204.406	3.4	13.1	6.5
All items less energy .....	247.230	246.554	245.051	0.5	-0.9	-0.6
All items less food and energy .....	247.180	246.752	244.966	0.4	-0.9	-0.7

**Footnotes**

(1) Index on a December 1977=100 base.

(2) This index series was calculated using a Laspeyres estimator. All other item stratum index series were calculated using a geometric means estimator.

(3) Index on a December 1982=100 base.

(4) Indexes on a December 1997=100 base.

(5) Special index based on a substantially smaller sample.

(6) Index on a December 1993=100 base.

- Data not available.

Note: Index applies to a month as a whole, not to any specific date. Data not seasonally adjusted.