



For Release: Wednesday, March 11, 2020

20-397-CHI

MIDWEST INFORMATION OFFICE: Chicago, Ill.

Technical information: (312) 353-1880 BLSInfoChicago@bls.gov www.bls.gov/regions/midwest

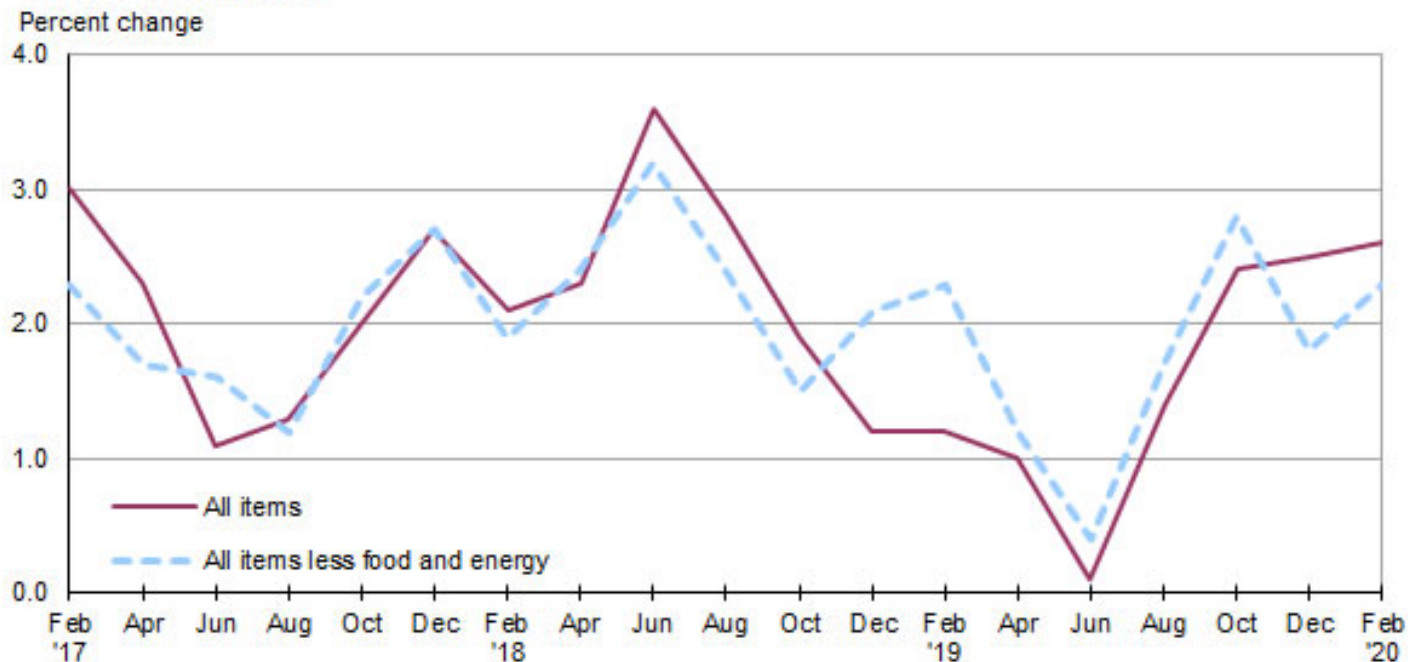
Media contact: (312) 353-1138

Consumer Price Index, Detroit-Warren-Dearborn — February 2020 **Local prices up 2.6 percent over the year**

The Consumer Price Index for All Urban Consumers (CPI-U) in the Detroit-Warren-Dearborn area increased 0.5 percent from December to February, the U.S. Bureau of Labor Statistics reported today. Assistant Commissioner for Regional Operations Charlene Peiffer noted that the index for all items less food and energy rose 0.8 percent while the food index rose 0.3 percent. The energy index declined 3.8 percent over the bi-monthly period. Among the indexes within the all items less food and energy category, prices were higher for motor vehicle insurance, apparel, and shelter. (Data in this report are not seasonally adjusted. Accordingly, month-to-month changes may reflect the impact of seasonal influences.)

Over the past 12 months, the Detroit all items CPI-U increased 2.6 percent. (See [chart 1](#) and [table A.](#)) The index for all items less food and energy increased 2.3 percent and the food index was up 2.6 percent from February 2019 to February 2020. The energy index rose 5.8 percent over the year. (See [table 1.](#))

Chart 1. Over-the-year percent change in CPI-U, Detroit-Warren-Dearborn, MI, February 2017–February 2020



Source: U.S. Bureau of Labor Statistics.

Food

Food prices were up 0.3 percent from December to February. Of the two components within the food index, prices for food at home (groceries) increased 0.6 percent and prices for food away from home (restaurant, cafeteria, and vending purchases) were unchanged over the bi-monthly period.

Over the year, food prices in the Detroit area were up 2.6 percent. Prices for groceries increased 2.0 percent and prices for food away from home increased 3.3 percent.

Energy

The energy index for Detroit was down 3.8 percent from December to February. Among the index's components, prices were lower for gasoline (-7.5 percent), electricity (-0.4 percent), and utility (piped) gas service (-0.2 percent).

From February 2019 to February 2020, overall energy prices increased 5.8 percent. Gasoline prices rose 3.8 percent, while the indexes for electricity and utility (piped) gas service increased 11.7 percent and 2.3 percent, respectively.

All items less food and energy

The index for all items less food and energy increased 0.8 percent from December to February. Among the index's components, prices were higher for motor vehicle insurance (5.9 percent), apparel (4.9 percent), and shelter (0.2 percent).

Over the year, the index for all items less food and energy rose 2.3 percent. Prices were higher for shelter (2.7 percent), medical care (6.6 percent), and motor vehicle insurance (7.7 percent).

Table A. Detroit-Warren-Dearborn, MI, CPI-U 2-month and 12-month percent changes, all items index, not seasonally adjusted

Month	2016		2017		2018		2019		2020	
	2-month	12-month	2-month	12-month	2-month	12-month	2-month	12-month	2-month	12-month
February	0.3	0.9	0.9	3.0	0.3	2.1	0.4	1.2	0.5	2.6
April	1.4	1.1	0.7	2.3	0.9	2.3	0.6	1.0		
June	1.2	2.3	0.0	1.1	1.3	3.6	0.4	0.1		
August	-0.1	1.7	0.1	1.3	-0.6	2.8	0.6	1.4		
October	0.2	1.7	0.9	2.0	0.0	1.9	1.0	2.4		
December	-0.6	2.4	0.1	2.7	-0.6	1.2	-0.6	2.5		

The April 2020 Consumer Price Index for Detroit is scheduled to be released on Tuesday, May 12, 2020.

Technical Note

The Consumer Price Index (CPI) is a measure of the average change in prices over time in a fixed market basket of goods and services. The Bureau of Labor Statistics publishes CPIs for two population groups: (1) a CPI for All Urban Consumers (CPI-U) which covers approximately 93 percent of the total population and (2) a CPI for Urban Wage Earners and Clerical Workers (CPI-W) which covers approximately 29 percent of the total population. The CPI-U includes, in addition to wage earners and clerical workers, groups such as professional, managerial, and technical workers, the self-employed, short-term workers, the unemployed, and retirees and others not in the labor force.

The CPI is based on prices of food, clothing, shelter, and fuels, transportation fares, charges for doctors' and dentists' services, drugs, and the other goods and services that people buy for day-to-day living. Each month, prices are collected in 75 urban areas across the country from about 5,000 housing units and approximately 22,000 retail establishments--department stores, supermarkets, hospitals, filling stations, and other types of stores and service establishments. All taxes directly associated with the purchase and use of items are included in the index.

The index measures price changes from a designated reference date (1982-84) that equals 100.0. An increase of 16.5 percent, for example, is shown as 116.5. This change can also be expressed in dollars as follows: the price of a base period "market basket" of goods and services in the CPI has risen from \$10 in 1982-84 to \$11.65. For further details see the CPI home page on the Internet at www.bls.gov/cpi and the BLS Handbook of Methods, Chapter 17, The Consumer Price Index, available on the Internet at www.bls.gov/opub/hom/pdf/homch17.pdf.

In calculating the index, price changes for the various items in each location are averaged together with weights that represent their importance in the spending of the appropriate population group. Local data are then combined to obtain a U.S. city average. Because the sample size of a local area is smaller, the local area index is subject to substantially more sampling and other measurement error than the national index. In addition, local indexes are not adjusted for seasonal influences. As a result, local area indexes show greater volatility than the national index, although their long-term trends are quite similar. **Note: Area indexes do not measure differences in the level of prices between cities; they only measure the average change in prices for each area since the base period.**

The **Detroit-Warren-Dearborn, MI, Core Based Statistical Area** covered in this release is comprised of Lapeer, Livingston, Macomb, Oakland, St. Clair, and Wayne Counties in Michigan.

Information in this release will be made available to sensory impaired individuals upon request. Voice phone: (202) 691-5200; Federal Relay Service: (800) 877-8339.

Table 1. Consumer Price Index for All Urban Consumers (CPI-U): Indexes and percent changes for selected periods Detroit-Warren-Dearborn, MI (1982-84=100 unless otherwise noted)

Item and Group	Indexes			Percent change from-		
	Dec. 2019	Jan. 2020	Feb. 2020	Feb. 2019	Dec. 2019	Jan. 2020
Expenditure category						
All items.....	237.514	-	238.634	2.6	0.5	-
All items (1967=100).....	705.990	-	709.319	-	-	-
Food and beverages.....	229.883	-	230.694	2.6	0.4	-
Food.....	229.279	-	230.017	2.6	0.3	-
Food at home.....	212.517	213.826	213.829	2.0	0.6	0.0
Cereals and bakery products.....	265.105	-	272.912	3.6	2.9	-
Meats, poultry, fish and eggs.....	229.050	-	227.151	2.9	-0.8	-
Dairy and related products.....	159.327	-	163.021	2.7	2.3	-
Fruits and vegetables.....	229.403	-	225.767	-1.1	-1.6	-
Nonalcoholic beverages and beverage materials(1).....	204.199	-	203.778	2.2	-0.2	-
Other food at home.....	189.755	-	193.504	2.0	2.0	-
Food away from home.....	255.727	-	255.654	3.3	0.0	-
Alcoholic beverages.....	231.776	-	233.435	2.6	0.7	-
Housing.....	227.581	-	227.986	2.8	0.2	-
Shelter.....	263.196	263.770	263.780	2.7	0.2	0.0
Rent of primary residence(2).....	271.908	272.245	271.724	2.8	-0.1	-0.2
Owners' equiv. rent of residences(2)(3).....	261.881	262.241	262.439	2.9	0.2	0.1
Owners' equiv. rent of primary residence(2)(3).....	261.881	262.241	262.439	2.9	0.2	0.1
Fuels and utilities.....	255.982	-	255.301	6.3	-0.3	-
Household energy.....	197.171	196.894	196.513	7.5	-0.3	-0.2
Energy services(2).....	198.826	198.615	198.224	7.8	-0.3	-0.2
Electricity(2).....	238.532	236.765	237.626	11.7	-0.4	0.4
Utility (piped) gas service(2).....	145.394	146.681	145.129	2.3	-0.2	-1.1
Household furnishings and operations.....	118.502	-	118.864	-0.4	0.3	-
Apparel.....	108.008	-	113.312	-4.1	4.9	-
Transportation.....	243.488	-	244.710	2.8	0.5	-
Private transportation.....	246.449	-	246.754	3.2	0.1	-
New and used motor vehicles(4).....	111.177	-	111.874	-0.2	0.6	-
New vehicles(1).....	216.556	-	216.113	3.5	-0.2	-
Used cars and trucks(1).....	283.408	-	284.207	-1.0	0.3	-
Motor fuel.....	231.985	231.461	214.528	3.6	-7.5	-7.3
Gasoline (all types).....	230.513	230.039	213.134	3.8	-7.5	-7.3
Gasoline, unleaded regular(5).....	231.402	230.756	213.467	3.7	-7.8	-7.5
Gasoline, unleaded midgrade(5)(6).....	274.919	275.451	257.274	4.2	-6.4	-6.6
Gasoline, unleaded premium(5).....	244.377	245.527	230.767	4.1	-5.6	-6.0
Motor vehicle insurance(1).....	1,846.080	-	1,954.180	7.7	5.9	-
Medical care.....	463.222	-	464.056	6.6	0.2	-
Recreation(4).....	113.728	-	113.504	1.4	-0.2	-
Education and communication(4).....	144.829	-	145.567	0.6	0.5	-
Tuition, other school fees, and childcare(1).....	1,322.723	-	1,323.608	1.7	0.1	-
Other goods and services.....	440.286	-	447.579	1.4	1.7	-
Commodity and service group						
All items.....	237.514	-	238.634	2.6	0.5	-
Commodities.....	177.081	-	176.813	1.4	-0.2	-
Commodities less food and beverages.....	149.931	-	149.249	0.5	-0.5	-
Nondurables less food and beverages.....	182.244	-	180.023	-0.1	-1.2	-
Durables.....	113.245	-	113.556	1.1	0.3	-
Services.....	298.873	-	301.446	3.4	0.9	-

Note: See footnotes at end of table.

Table 1. Consumer Price Index for All Urban Consumers (CPI-U): Indexes and percent changes for selected periods Detroit-Warren-Dearborn, MI (1982-84=100 unless otherwise noted) - Continued

Item and Group	Indexes			Percent change from-		
	Dec. 2019	Jan. 2020	Feb. 2020	Feb. 2019	Dec. 2019	Jan. 2020
Special aggregate indexes						
All items less medical care	228.284	-	229.420	2.2	0.5	-
All items less shelter	230.576	-	231.905	2.5	0.6	-
Commodities less food	152.899	-	152.286	0.6	-0.4	-
Nondurables	205.806	-	205.083	1.4	-0.4	-
Nondurables less food	185.458	-	183.518	0.1	-1.0	-
Services less rent of shelter(3)	351.492	-	356.540	4.0	1.4	-
Services less medical care services	288.019	-	290.573	2.8	0.9	-
Energy	216.586	216.193	208.426	5.8	-3.8	-3.6
All items less energy	242.512	-	244.387	2.3	0.8	-
All items less food and energy	245.528	-	247.610	2.3	0.8	-

Footnotes

(1) Index on a December 1977=100 base.

(2) This index series was calculated using a Laspeyres estimator. All other item stratum index series were calculated using a geometric means estimator.

(3) Index on a December 1982=100 base.

(4) Indexes on a December 1997=100 base.

(5) Special index based on a substantially smaller sample.

(6) Index on a December 1993=100 base.

- Data not available.

Note: Index applies to a month as a whole, not to any specific date. Data not seasonally adjusted.