



For Release: Wednesday, January 13, 2021

21-8-CHI

MIDWEST INFORMATION OFFICE: Chicago, Ill.

Technical information: (312) 353-1880 BLSInfoChicago@bls.gov www.bls.gov/regions/midwest

Media contact: (312) 353-1138

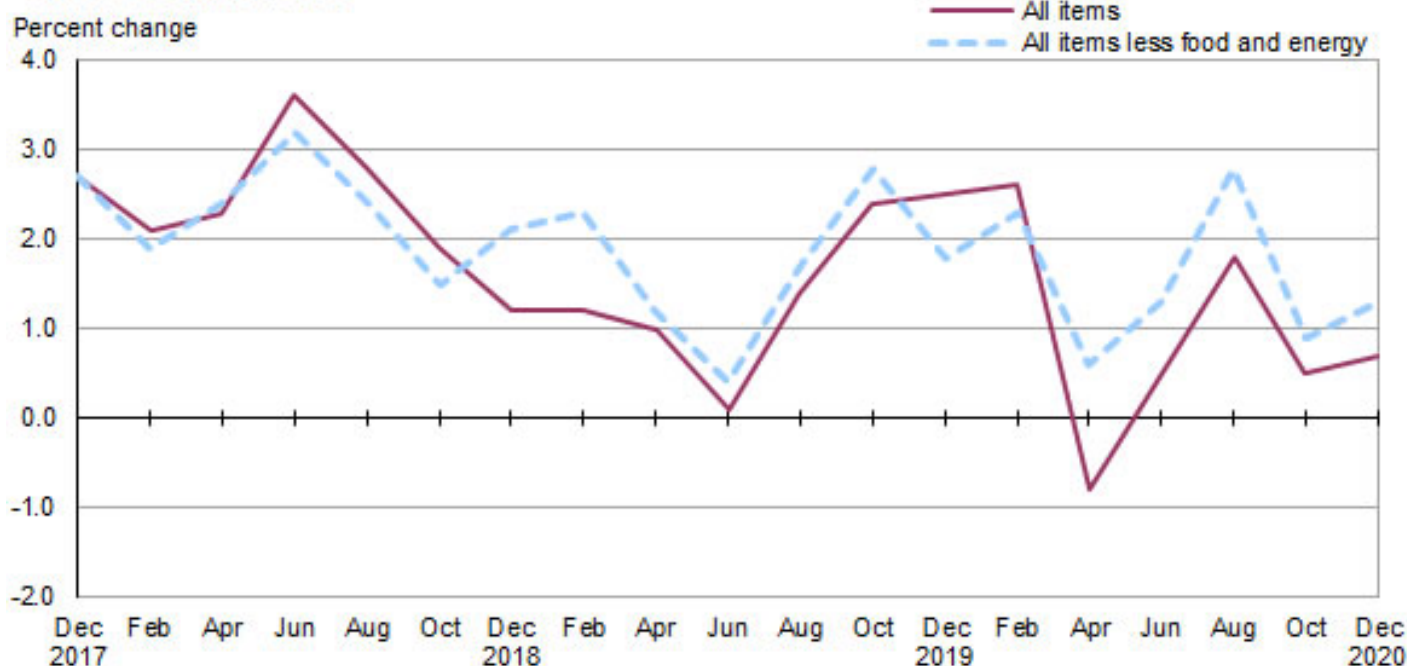
Consumer Price Index, Detroit-Warren-Dearborn — December 2020

Area prices were down 0.3 percent over the past two months, up 0.7 percent from a year ago

Prices in the Detroit-Warren-Dearborn area, as measured by the Consumer Price Index for All Urban Consumers (CPI-U), decreased 0.3 percent for the two months ending in December 2020, the U.S. Bureau of Labor Statistics reported today. Regional Commissioner Jason Palmer noted that food prices decreased 0.4 percent, and the energy index declined 1.8 percent from October to December. The all items less food and energy index fell 0.2 percent over the past two months due to declines in the indexes for apparel, household furnishings and operations, and medical care. (Data in this report are not seasonally adjusted. Accordingly, bi-monthly changes may reflect seasonal influences.)

Over the last 12 months, the CPI-U advanced 0.7 percent. (See [chart 1](#) and [table A.](#)) The index for all items less food and energy increased 1.3 percent over the year. Food prices were up 0.2 percent. Energy prices declined 6.0 percent, largely the result of a decrease in the price of gasoline. (See [table 1.](#))

Chart 1. Over-the-year percent change in CPI-U, Detroit-Warren-Dearborn, MI, December 2017–December 2020



Source: U.S. Bureau of Labor Statistics.

Food

Food prices declined 0.4 percent for the two months ending in December. Prices for food at home (groceries) fell 1.5 percent, and prices for food away from home (restaurant, cafeteria, and vending purchases) increased 0.9 percent for the same period.

Over the year, food prices increased 0.2 percent. Prices for food at home rose 1.8 percent since a year ago, and prices for food away from home decreased 1.7 percent.

Energy

The energy index decreased 1.8 percent for the two months ending in December. The decrease was mainly due to lower electricity prices (-4.4 percent). Gasoline prices fell 0.2 percent, and prices for utility (piped) gas service declined 0.5 percent for the same period.

Energy prices fell 6.0 percent over the year, largely due to lower gasoline prices (-19.5 percent). Prices paid for utility (piped) gas service advanced 8.9 percent, and prices for electricity rose 5.0 percent during the past year.

All items less food and energy

The index for all items less food and energy was down 0.2 percent in the latest two-month period. Lower prices for apparel (-5.9 percent), household furnishings and operations (-2.5 percent), and medical care (-0.7 percent) were partially offset by higher prices for shelter (0.9 percent) and recreation (1.9 percent).

Over the year, the index for all items less food and energy increased 1.3 percent. Components contributing to the increase included motor vehicle insurance (4.5 percent), education and communication (2.4 percent), and medical care (1.5 percent). Partly offsetting the increases were lower prices for apparel (-5.4 percent).

Table A. Detroit-Warren-Dearborn, MI, CPI-U 2-month and 12-month percent changes, all items index, not seasonally adjusted

Month	2016		2017		2018		2019		2020	
	2-month	12-month	2-month	12-month	2-month	12-month	2-month	12-month	2-month	12-month
February	0.3	0.9	0.9	3.0	0.3	2.1	0.4	1.2	0.5	2.6
April	1.4	1.1	0.7	2.3	0.9	2.3	0.6	1.0	-2.7	-0.8
June	1.2	2.3	0.0	1.1	1.3	3.6	0.4	0.1	1.7	0.5
August	-0.1	1.7	0.1	1.3	-0.6	2.8	0.6	1.4	1.9	1.8
October	0.2	1.7	0.9	2.0	0.0	1.9	1.0	2.4	-0.3	0.5
December	-0.6	2.4	0.1	2.7	-0.6	1.2	-0.6	2.5	-0.3	0.7

The February 2021 Consumer Price Index for the Detroit-Warren-Dearborn area is scheduled to be released on Wednesday, March 10, 2021.

Coronavirus (COVID-19) Pandemic Impact on December 2020 Consumer Price Index Data

Data collection by personal visit for the Consumer Price Index (CPI) program has been suspended since March 16, 2020. When possible, data normally collected by personal visit were collected either online or by phone. Additionally, data collection in December was affected by the temporary closing or limited operations of certain types of establishments. These factors resulted in an increase in the number of prices considered temporarily unavailable and imputed.

While the CPI program attempted to collect as much data as possible, many indexes are based on smaller amounts of collected prices than usual, and a small number of indexes that are normally published were not published this month. Additional information is available at www.bls.gov/covid19/effects-of-covid-19-pandemic-on-consumer-price-index.htm.

Technical Note

The Consumer Price Index (CPI) is a measure of the average change in prices over time in a fixed market basket of goods and services. The Bureau of Labor Statistics publishes CPIs for two population groups: (1) a CPI for All Urban Consumers (CPI-U) which covers approximately 93 percent of the total U.S. population and (2) a CPI for Urban Wage Earners and Clerical Workers (CPI-W) which covers approximately 29 percent of the total U.S. population. The CPI-U includes, in addition to wage earners and clerical workers, groups such as professional, managerial, and technical workers, the self-employed, short-term workers, the unemployed, and retirees and others not in the labor force.

The CPI is based on prices of food, clothing, shelter, and fuels, transportation fares, charges for doctors' and dentists' services, drugs, and the other goods and services that people buy for day-to-day living. Each month, prices are collected in 75 urban areas across the country from about 6,000 housing units and approximately 22,000 retail establishments—department stores, supermarkets, hospitals, filling stations, and other types of stores and service establishments. All taxes directly associated with the purchase and use of items are included in the index.

The index measures price changes from a designated reference date; for most of the CPI-U the reference base is 1982-84 equals 100. An increase of 7 percent from the reference base, for example, is shown as 107.000. Alternatively, that relationship can also be expressed as the price of a base period market basket of goods and services rising from \$100 to \$107. For further details see the CPI home page on the Internet at www.bls.gov/cpi and the CPI section of the BLS Handbook of Methods available on the internet at www.bls.gov/opub/hom/cpi/.

In calculating the index, price changes for the various items in each location are averaged together with weights that represent their importance in the spending of the appropriate population group. Local data are then combined to obtain a U.S. city average. Because the sample size of a local area is smaller, the local area index is subject to substantially more sampling and other measurement error than the national index. In addition, local indexes are not adjusted for seasonal influences. As a result, local area indexes show greater volatility than the national index, although their long-term trends are quite similar. **NOTE: Area indexes do not measure differences in the level of prices between cities; they only measure the average change in prices for each area since the base period.**

The **Detroit-Warren-Dearborn, MI, Core Based Statistical Area** covered in this release is comprised of Lapeer, Livingston, Macomb, Oakland, St. Clair, and Wayne Counties in Michigan.

Information in this release will be made available to individuals with sensory impairments upon request. Voice phone: (202) 691-5200; Federal Relay Service: (800) 877-8339.

Table 1. Consumer Price Index for All Urban Consumers (CPI-U): Indexes and percent changes for selected periods Detroit-Warren-Dearborn, MI (1982-84=100 unless otherwise noted)

Item and Group	Indexes			Percent change from-		
	Oct. 2020	Nov. 2020	Dec. 2020	Dec. 2019	Oct. 2020	Nov. 2020
Expenditure category						
All items	239.922	-	239.089	0.7	-0.3	-
All items (1967=100)	713.147	-	710.671	-	-	-
Food and beverages	231.177	-	230.130	0.1	-0.5	-
Food	230.736	-	229.737	0.2	-0.4	-
Food at home	219.555	212.780	216.276	1.8	-1.5	1.6
Cereals and bakery products	266.768	-	264.917	-0.1	-0.7	-
Meats, poultry, fish and eggs	242.807	-	230.803	0.8	-4.9	-
Dairy and related products	169.154	-	155.559	-2.4	-8.0	-
Fruits and vegetables	226.376	-	225.085	-1.9	-0.6	-
Nonalcoholic beverages and beverage materials(1)	208.670	-	216.002	5.8	3.5	-
Other food at home	199.564	-	200.226	5.5	0.3	-
Food away from home	249.246	-	251.484	-1.7	0.9	-
Alcoholic beverages	231.137	-	229.564	-1.0	-0.7	-
Housing	229.928	-	230.113	1.1	0.1	-
Shelter	261.849	263.785	264.245	0.4	0.9	0.2
Rent of primary residence(2)	273.807	276.608	275.794	1.4	0.7	-0.3
Owners' equiv. rent of residences(2)(3)	261.776	262.953	261.831	0.0	0.0	-0.4
Owners' equiv. rent of primary residence(2)(3)	261.776	262.953	261.831	0.0	0.0	-0.4
Fuels and utilities	276.471	-	270.159	5.5	-2.3	-
Household energy	215.910	209.508	209.767	6.4	-2.8	0.1
Energy services(2)	218.130	211.602	211.821	6.5	-2.9	0.1
Electricity(2)	262.055	250.648	250.510	5.0	-4.4	-0.1
Utility (piped) gas service(2)	159.164	157.796	158.336	8.9	-0.5	0.3
Household furnishings and operations	123.364	-	120.273	1.5	-2.5	-
Apparel	108.534	-	102.177	-5.4	-5.9	-
Transportation	245.460	-	243.181	-0.1	-0.9	-
Private transportation	249.299	-	247.639	0.5	-0.7	-
New and used motor vehicles(4)	-	-	-	-	-	-
New vehicles(1)	-	-	-	-	-	-
Used cars and trucks(1)	321.601	-	312.573	10.3	-2.8	-
Motor fuel	186.980	178.202	186.623	-19.6	-0.2	4.7
Gasoline (all types)	185.909	177.021	185.475	-19.5	-0.2	4.8
Gasoline, unleaded regular(5)	185.578	176.744	185.013	-20.0	-0.3	4.7
Gasoline, unleaded midgrade(5)(6)	226.623	214.235	227.901	-17.1	0.6	6.4
Gasoline, unleaded premium(5)	208.606	198.975	208.944	-14.5	0.2	5.0
Motor vehicle insurance(1)	1,937.584	-	1,928.599	4.5	-0.5	-
Medical care	473.334	-	470.223	1.5	-0.7	-
Recreation(4)	112.438	-	114.610	0.8	1.9	-
Education and communication(4)	148.572	-	148.329	2.4	-0.2	-
Tuition, other school fees, and childcare(1) ..	1,330.714	-	1,330.357	0.6	0.0	-
Other goods and services	447.770	-	451.849	2.6	0.9	-
Commodity and service group						
All items	239.922	-	239.089	0.7	-0.3	-
Commodities	177.117	-	175.300	-1.0	-1.0	-
Commodities less food and beverages	149.472	-	147.418	-1.7	-1.4	-
Nondurables less food and beverages	172.389	-	170.018	-6.7	-1.4	-
Durables	-	-	-	-	-	-
Services	303.760	-	303.975	1.7	0.1	-

Note: See footnotes at end of table.

Table 1. Consumer Price Index for All Urban Consumers (CPI-U): Indexes and percent changes for selected periods Detroit-Warren-Dearborn, MI (1982-84=100 unless otherwise noted) - Continued

Item and Group	Indexes			Percent change from-		
	Oct. 2020	Nov. 2020	Dec. 2020	Dec. 2019	Oct. 2020	Nov. 2020
Special aggregate indexes						
All items less medical care	230.358	-	229.623	0.6	-0.3	-
All items less shelter	234.394	-	232.362	0.8	-0.9	-
Commodities less food	152.433	-	150.387	-1.6	-1.3	-
Nondurables	201.460	-	199.744	-2.9	-0.9	-
Nondurables less food	176.281	-	173.971	-6.2	-1.3	-
Services less rent of shelter(3)	364.142	-	361.697	2.9	-0.7	-
Services less medical care services	292.064	-	292.439	1.5	0.1	-
Energy	207.277	199.690	203.592	-6.0	-1.8	2.0
All items less energy	245.887	-	245.269	1.1	-0.3	-
All items less food and energy	249.253	-	248.702	1.3	-0.2	-

Footnotes

(1) Index on a December 1977=100 base.

(2) This index series was calculated using a Laspeyres estimator. All other item stratum index series were calculated using a geometric means estimator.

(3) Index on a December 1982=100 base.

(4) Indexes on a December 1997=100 base.

(5) Special index based on a substantially smaller sample.

(6) Index on a December 1993=100 base.

- Data not available.

Note: Index applies to a month as a whole, not to any specific date. Data not seasonally adjusted.