



For Release: Wednesday, March 10, 2021

21-353-CHI

MIDWEST INFORMATION OFFICE: Chicago, Ill.

Technical information: (312) 353-1880 BLSInfoChicago@bls.gov www.bls.gov/regions/midwest

Media contact: (312) 353-1138

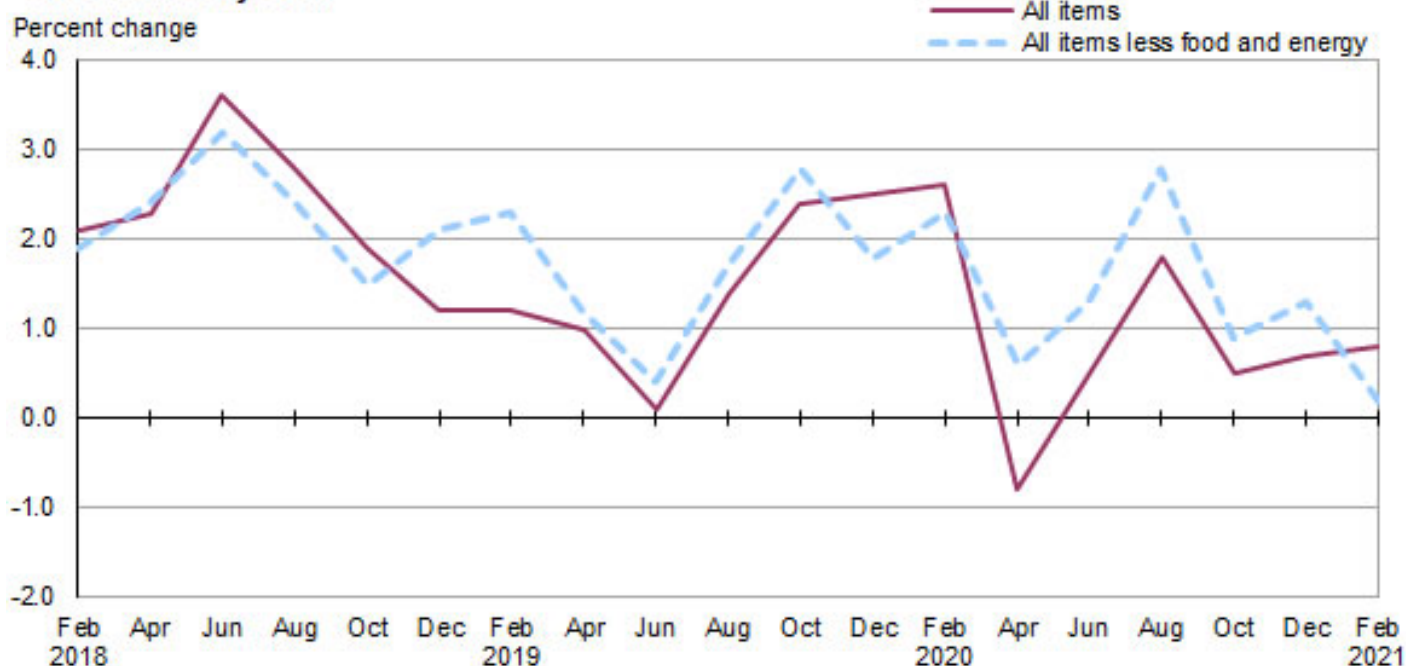
Consumer Price Index, Detroit-Warren-Dearborn — February 2021

Area prices were up 0.6 percent over the past two months, up 0.8 percent from a year ago

Prices in the Detroit-Warren-Dearborn area, as measured by the Consumer Price Index for All Urban Consumers (CPI-U), advanced 0.6 percent for the two months ending in February 2021, the U.S. Bureau of Labor Statistics reported today. Regional Commissioner Jason Palmer noted that food prices increased 3.1 percent, and the energy index rose 7.1 percent from December to February. The all items less food and energy index fell 0.3 percent over the past two months due to declines in the indexes for shelter and other goods and services. (Data in this report are not seasonally adjusted. Accordingly, bi-monthly changes may reflect seasonal influences.)

Over the last 12 months, the CPI-U rose 0.8 percent. (See [chart 1](#) and [table A](#).) Food prices rose 2.9 percent. Energy prices increased 4.6 percent, largely the result of an increase in the price of electricity. The index for all items less food and energy increased 0.2 percent over the year. (See [table 1](#).)

Chart 1. Over-the-year percent change in CPI-U, Detroit-Warren-Dearborn, MI, February 2018–February 2021



Source: U.S. Bureau of Labor Statistics.

Food

Food prices increased 3.1 percent for the two months ending in February. Prices for food at home (groceries) rose 1.7 percent, and prices for food away from home (restaurant, cafeteria, and vending purchases) increased 4.8 percent for the same period.

Over the year, food prices rose 2.9 percent. Prices for food at home rose 2.9 percent since a year ago, and prices for food away from home advanced 3.0 percent.

Energy

The energy index rose 7.1 percent for the two months ending in February. The increase was mainly due to higher prices for gasoline (17.4 percent). Prices for electricity advanced 1.0 percent, while prices for utility (piped) gas service decreased 1.8 percent for the same period.

Energy prices increased 4.6 percent over the year, largely due to higher prices for electricity (6.5 percent). Prices paid for utility (piped) gas service increased 7.2 percent, and prices for gasoline advanced 2.2 percent during the past year.

All items less food and energy

The index for all items less food and energy decreased 0.3 percent in the latest two-month period. Declines in the indexes for shelter (-0.6 percent) and other goods and services (-0.7 percent) were partially offset by higher prices for household furnishings and operations (5.0 percent).

Over the year, the index for all items less food and energy rose 0.2 percent. Components contributing to the increase included household furnishings and operations (6.2 percent) and motor vehicle insurance (4.8 percent). Partly offsetting the increases were declines in prices for apparel (-9.8 percent).

Table A. Detroit-Warren-Dearborn, MI, CPI-U 2-month and 12-month percent changes, all items index, not seasonally adjusted

Month	2017		2018		2019		2020		2021	
	2-month	12-month	2-month	12-month	2-month	12-month	2-month	12-month	2-month	12-month
February	0.9	3.0	0.3	2.1	0.4	1.2	0.5	2.6	0.6	0.8
April	0.7	2.3	0.9	2.3	0.6	1.0	-2.7	-0.8		
June.....	0.0	1.1	1.3	3.6	0.4	0.1	1.7	0.5		
August	0.1	1.3	-0.6	2.8	0.6	1.4	1.9	1.8		
October.....	0.9	2.0	0.0	1.9	1.0	2.4	-0.3	0.5		
December.....	0.1	2.7	-0.6	1.2	-0.6	2.5	-0.3	0.7		

The April 2021 Consumer Price Index for the Detroit-Warren-Dearborn area is scheduled to be released on Wednesday, May 12, 2021.

Coronavirus (COVID-19) Pandemic Impact on February 2021 Consumer Price Index Data

Data collection by personal visit for the Consumer Price Index (CPI) program has been suspended since March 16, 2020. When possible, data normally collected by personal visit were collected either online or by phone. Additionally, data collection in February was affected by the temporary closing or limited operations of certain types of establishments. These factors resulted in an increase in the number of prices considered temporarily unavailable and imputed.

While the CPI program attempted to collect as much data as possible, many indexes are based on smaller amounts of collected prices than usual, and a small number of indexes that are normally published were not published this month. Additional information is available at www.bls.gov/covid19/effects-of-covid-19-pandemic-on-consumer-price-index.htm.

Technical Note

The Consumer Price Index (CPI) is a measure of the average change in prices over time in a fixed market basket of goods and services. The Bureau of Labor Statistics publishes CPIs for two population groups: (1) a CPI for All Urban Consumers (CPI-U) which covers approximately 93 percent of the total U.S. population and (2) a CPI for Urban Wage Earners and Clerical Workers (CPI-W) which covers approximately 29 percent of the total U.S. population. The CPI-U includes, in addition to wage earners and clerical workers, groups such as professional, managerial, and technical workers, the self-employed, short-term workers, the unemployed, and retirees and others not in the labor force.

The CPI is based on prices of food, clothing, shelter, and fuels, transportation fares, charges for doctors' and dentists' services, drugs, and the other goods and services that people buy for day-to-day living. Each month, prices are collected in 75 urban areas across the country from about 6,000 housing units and approximately 22,000 retail establishments—department stores, supermarkets, hospitals, filling stations, and other types of stores and service establishments. All taxes directly associated with the purchase and use of items are included in the index.

The index measures price changes from a designated reference date; for most of the CPI-U the reference base is 1982-84 equals 100. An increase of 7 percent from the reference base, for example, is shown as 107.000. Alternatively, that relationship can also be expressed as the price of a base period market basket of goods and services rising from \$100 to \$107. For further details see the CPI home page on the Internet at www.bls.gov/cpi and the CPI section of the BLS Handbook of Methods available on the internet at www.bls.gov/opub/hom/cpi/.

In calculating the index, price changes for the various items in each location are averaged together with weights that represent their importance in the spending of the appropriate population group. Local data are then combined to obtain a U.S. city average. Because the sample size of a local area is smaller, the local area index is subject to substantially more sampling and other measurement error than the national index. In addition, local indexes are not adjusted for seasonal influences. As a result, local area indexes show greater volatility than the national index, although their long-term trends are quite similar. **NOTE: Area indexes do not measure differences in the level of prices between cities; they only measure the average change in prices for each area since the base period.**

The **Detroit-Warren-Dearborn, MI, Core Based Statistical Area** covered in this release is comprised of Lapeer, Livingston, Macomb, Oakland, St. Clair, and Wayne Counties in Michigan.

Information in this release will be made available to individuals with sensory impairments upon request. Voice phone: (202) 691-5200; Federal Relay Service: (800) 877-8339.

Table 1. Consumer Price Index for All Urban Consumers (CPI-U): Indexes and percent changes for selected periods Detroit-Warren-Dearborn, MI (1982-84=100 unless otherwise noted)

Item and Group	Indexes			Percent change from-		
	Dec. 2020	Jan. 2021	Feb. 2021	Feb. 2020	Dec. 2020	Jan. 2021
Expenditure category						
All items	239.089	-	240.570	0.8	0.6	-
All items (1967=100)	710.671	-	715.074	-	-	-
Food and beverages	230.130	-	236.615	2.6	2.8	-
Food	229.737	-	236.795	2.9	3.1	-
Food at home	216.276	217.526	219.957	2.9	1.7	1.1
Cereals and bakery products	264.917	-	266.491	-2.4	0.6	-
Meats, poultry, fish and eggs	230.803	-	233.297	2.7	1.1	-
Dairy and related products	155.559	-	167.914	3.0	7.9	-
Fruits and vegetables	225.085	-	234.503	3.9	4.2	-
Nonalcoholic beverages and beverage materials(1)	216.002	-	219.621	7.8	1.7	-
Other food at home	200.226	-	198.587	2.6	-0.8	-
Food away from home	251.484	-	263.434	3.0	4.8	-
Alcoholic beverages	229.564	-	229.231	-1.8	-0.1	-
Housing	230.113	-	230.595	1.1	0.2	-
Shelter	264.245	258.649	262.681	-0.4	-0.6	1.6
Rent of primary residence(2)	275.794	270.880	273.842	0.8	-0.7	1.1
Owners' equiv. rent of residences(2)(3)	261.831	259.028	262.616	0.1	0.3	1.4
Owners' equiv. rent of primary residence(2)(3)	261.831	259.028	262.616	0.1	0.3	1.4
Fuels and utilities	270.159	-	270.430	5.9	0.1	-
Household energy	209.767	210.507	209.638	6.7	-0.1	-0.4
Energy services(2)	211.821	212.494	211.577	6.7	-0.1	-0.4
Electricity(2)	250.510	252.955	252.955	6.5	1.0	0.0
Utility (piped) gas service(2)	158.336	157.270	155.551	7.2	-1.8	-1.1
Household furnishings and operations	120.273	-	126.283	6.2	5.0	-
Apparel	102.177	-	102.182	-9.8	0.0	-
Transportation	243.181	-	243.815	-0.4	0.3	-
Private transportation	247.639	-	248.568	0.7	0.4	-
New and used motor vehicles(4)	-	-	-	-	-	-
New vehicles(1)	-	-	-	-	-	-
Used cars and trucks(1)	312.573	-	310.918	9.4	-0.5	-
Motor fuel	186.623	199.395	219.024	2.1	17.4	9.8
Gasoline (all types)	185.475	198.155	217.740	2.2	17.4	9.9
Gasoline, unleaded regular(5)	185.013	198.277	218.536	2.4	18.1	10.2
Gasoline, unleaded midgrade(5)(6)	227.901	240.742	261.919	1.8	14.9	8.8
Gasoline, unleaded premium(5)	208.944	216.230	230.201	-0.2	10.2	6.5
Motor vehicle insurance(1)	1,928.599	-	2,048.006	4.8	6.2	-
Medical care	470.223	-	-	-	-	-
Recreation(4)	114.610	-	114.183	0.6	-0.4	-
Education and communication(4)	148.329	-	148.812	2.2	0.3	-
Tuition, other school fees, and childcare(1) ..	1,330.357	-	1,330.423	0.5	0.0	-
Other goods and services	451.849	-	448.637	0.2	-0.7	-
Commodity and service group						
All items	239.089	-	240.570	0.8	0.6	-
Commodities	175.300	-	179.081	1.3	2.2	-
Commodities less food and beverages	147.418	-	150.000	0.5	1.8	-
Nondurables less food and beverages	170.018	-	177.081	-1.6	4.2	-
Durables	-	-	116.409	2.5	-	-
Services	303.975	-	303.012	0.5	-0.3	-

Note: See footnotes at end of table.

Table 1. Consumer Price Index for All Urban Consumers (CPI-U): Indexes and percent changes for selected periods Detroit-Warren-Dearborn, MI (1982-84=100 unless otherwise noted) - Continued

Item and Group	Indexes			Percent change from-		
	Dec. 2020	Jan. 2021	Feb. 2021	Feb. 2020	Dec. 2020	Jan. 2021
Special aggregate indexes						
All items less medical care	229.623	-	230.922	0.7	0.6	-
All items less shelter	232.362	-	234.981	1.3	1.1	-
Commodities less food	150.387	-	152.890	0.4	1.7	-
Nondurables	199.744	-	206.522	0.7	3.4	-
Nondurables less food	173.971	-	180.492	-1.6	3.7	-
Services less rent of shelter(3)	361.697	-	361.456	1.4	-0.1	-
Services less medical care services	292.439	-	290.902	0.1	-0.5	-
Energy	203.592	209.711	217.963	4.6	7.1	3.9
All items less energy	245.269	-	245.745	0.6	0.2	-
All items less food and energy	248.702	-	248.007	0.2	-0.3	-

Footnotes

(1) Index on a December 1977=100 base.

(2) This index series was calculated using a Laspeyres estimator. All other item stratum index series were calculated using a geometric means estimator.

(3) Index on a December 1982=100 base.

(4) Indexes on a December 1997=100 base.

(5) Special index based on a substantially smaller sample.

(6) Index on a December 1993=100 base.

- Data not available.

Note: Index applies to a month as a whole, not to any specific date. Data not seasonally adjusted.