



For Release: Tuesday, July 13, 2021

21-1306-CHI

MIDWEST INFORMATION OFFICE: Chicago, Ill.

Technical information: (312) 353-1880 BLSInfoChicago@bls.gov www.bls.gov/regions/midwest

Media contact: (312) 353-1138

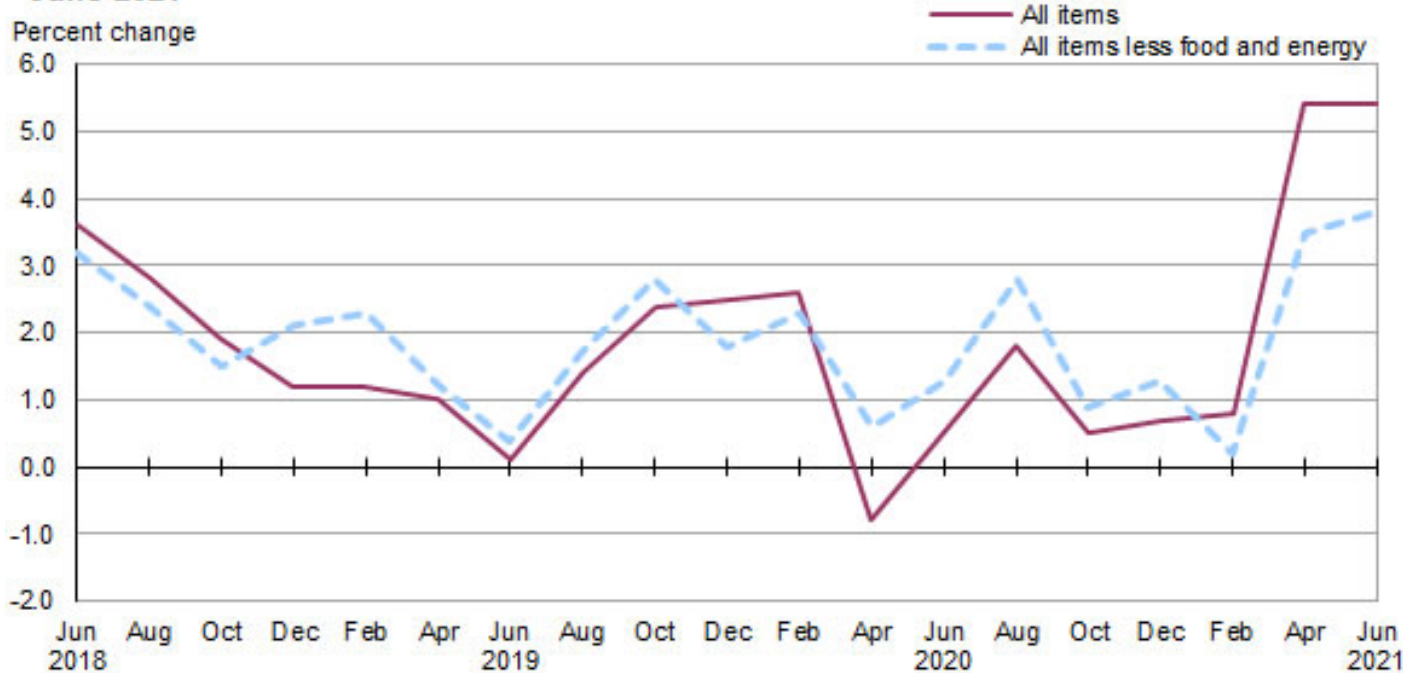
Consumer Price Index, Detroit-Warren-Dearborn — June 2021

Area prices were up 1.7 percent over the past two months, up 5.4 percent from a year ago

Prices in the Detroit-Warren-Dearborn area, as measured by the Consumer Price Index for All Urban Consumers (CPI-U), advanced 1.7 percent for the two months ending in June 2021, the U.S. Bureau of Labor Statistics reported today. Regional Commissioner Jason Palmer noted that food prices increased 0.7 percent, and the energy index rose 7.3 percent from April to June. The all items less food and energy index increased 1.4 percent over the past two months due to a rise in the indexes for used cars and trucks and shelter. (Data in this report are not seasonally adjusted. Accordingly, bi-monthly changes may reflect seasonal influences.)

Over the last 12 months, the CPI-U advanced 5.4 percent. (See [chart 1](#) and [table A.](#)) The index for all items less food and energy rose 3.8 percent over the year. Energy prices jumped 24.9 percent, largely the result of an increase in the price of gasoline. Food prices advanced 5.9 percent. (See [table 1.](#))

Chart 1. Over-the-year percent change in CPI-U, Detroit-Warren-Dearborn, MI, June 2018–June 2021



Source: U.S. Bureau of Labor Statistics.

Food

Food prices increased 0.7 percent for the two months ending in June. Prices for food at home (groceries) advanced 1.3 percent, and prices for food away from home (restaurant, cafeteria, and vending purchases) were unchanged for the same period.

Over the year, food prices advanced 5.9 percent. Prices for food at home advanced 2.0 percent since a year ago, and prices for food away from home jumped 11.0 percent.

Energy

The energy index rose 7.3 percent for the two months ending in June. The increase was mainly due to higher prices for gasoline (11.6 percent). Prices for electricity advanced 4.9 percent, and prices for utility (piped) gas service advanced 0.9 percent for the same period.

Energy prices jumped 24.9 percent over the year, largely due to higher prices for gasoline (49.0 percent). Prices paid for utility (piped) gas service jumped 12.9 percent, and prices for electricity advanced 4.4 percent during the past year.

All items less food and energy

The index for all items less food and energy advanced 1.4 percent in the latest two-month period. Higher prices for used cars and trucks (17.7 percent) and shelter (1.1 percent) were partially offset by lower prices for apparel (-1.7 percent) and recreation (-0.9 percent).

Over the year, the index for all items less food and energy rose 3.8 percent. Components contributing to the increase included used cars and trucks (45.8 percent) and shelter (5.0 percent). Partly offsetting the increases was a decline in the index for apparel (-3.2 percent).

Table A. Detroit-Warren-Dearborn, MI, CPI-U 2-month and 12-month percent changes, all items index, not seasonally adjusted

Month	2017		2018		2019		2020		2021	
	2-month	12-month	2-month	12-month	2-month	12-month	2-month	12-month	2-month	12-month
February	0.9	3.0	0.3	2.1	0.4	1.2	0.5	2.6	0.6	0.8
April	0.7	2.3	0.9	2.3	0.6	1.0	-2.7	-0.8	1.7	5.4
June.....	0.0	1.1	1.3	3.6	0.4	0.1	1.7	0.5	1.7	5.4
August	0.1	1.3	-0.6	2.8	0.6	1.4	1.9	1.8		
October.....	0.9	2.0	0.0	1.9	1.0	2.4	-0.3	0.5		
December.....	0.1	2.7	-0.6	1.2	-0.6	2.5	-0.3	0.7		

The August 2021 Consumer Price Index for the Detroit-Warren-Dearborn area is scheduled to be released on Tuesday, September 14, 2021.

Coronavirus (COVID-19) Pandemic Impact on June 2021 Consumer Price Index Data

Data collection by personal visit for the Consumer Price Index (CPI) program has been suspended since March 16, 2020. When possible, data normally collected by personal visit were collected either online or by phone. Additionally, data collection in June was affected by the temporary closing or limited operations of certain types of establishments. These factors resulted in an increase in the number of prices considered temporarily unavailable and imputed.

While the CPI program attempted to collect as much data as possible, many indexes are based on smaller amounts of collected prices than usual, and a small number of indexes that are normally published were not published this month. Additional information is available at www.bls.gov/covid19/effects-of-covid-19-pandemic-on-consumer-price-index.htm.

Technical Note

The Consumer Price Index (CPI) is a measure of the average change in prices over time in a fixed market basket of goods and services. The Bureau of Labor Statistics publishes CPIs for two population groups: (1) a CPI for All Urban Consumers (CPI-U) which covers approximately 93 percent of the total U.S. population and (2) a CPI for Urban Wage Earners and Clerical Workers (CPI-W) which covers approximately 29 percent of the total U.S. population. The CPI-U includes, in addition to wage earners and clerical workers, groups such as professional, managerial, and technical workers, the self-employed, short-term workers, the unemployed, and retirees and others not in the labor force.

The CPI is based on prices of food, clothing, shelter, and fuels, transportation fares, charges for doctors' and dentists' services, drugs, and the other goods and services that people buy for day-to-day living. Each month, prices are collected in 75 urban areas across the country from about 6,000 housing units and approximately 22,000 retail establishments—department stores, supermarkets, hospitals, filling stations, and other types of stores and service establishments. All taxes directly associated with the purchase and use of items are included in the index.

The index measures price changes from a designated reference date; for most of the CPI-U the reference base is 1982-84 equals 100. An increase of 7 percent from the reference base, for example, is shown as 107.000. Alternatively, that relationship can also be expressed as the price of a base period market basket of goods and services rising from \$100 to \$107. For further details see the CPI home page on the Internet at www.bls.gov/cpi and the CPI section of the BLS Handbook of Methods available on the internet at www.bls.gov/opub/hom/cpi/.

In calculating the index, price changes for the various items in each location are averaged together with weights that represent their importance in the spending of the appropriate population group. Local data are then combined to obtain a U.S. city average. Because the sample size of a local area is smaller, the local area index is subject to substantially more sampling and other measurement error than the national index. In addition, local indexes are not adjusted for seasonal influences. As a result, local area indexes show greater volatility than the national index, although their long-term trends are quite similar. **NOTE: Area indexes do not measure differences in the level of prices between cities; they only measure the average change in prices for each area since the base period.**

The **Detroit-Warren-Dearborn, MI, Core Based Statistical Area** covered in this release is comprised of Lapeer, Livingston, Macomb, Oakland, St. Clair, and Wayne Counties in Michigan.

Information in this release will be made available to individuals with sensory impairments upon request. Voice phone: (202) 691-5200; Federal Relay Service: (800) 877-8339.

Table 1. Consumer Price Index for All Urban Consumers (CPI-U): Indexes and percent changes for selected periods Detroit-Warren-Dearborn, MI (1982-84=100 unless otherwise noted)

Item and Group	Indexes			Percent change from-		
	Apr. 2021	May 2021	Jun. 2021	Jun. 2020	Apr. 2021	May 2021
Expenditure category						
All items	244.708	-	248.876	5.4	1.7	-
All items (1967=100)	727.373	-	739.763	-	-	-
Food and beverages	238.922	-	240.404	5.3	0.6	-
Food	239.157	-	240.856	5.9	0.7	-
Food at home	222.583	223.430	225.463	2.0	1.3	0.9
Cereals and bakery products	269.401	-	270.409	5.9	0.4	-
Meats, poultry, fish and eggs	241.770	-	244.319	-5.9	1.1	-
Dairy and related products	172.770	-	172.454	5.3	-0.2	-
Fruits and vegetables	233.488	-	244.324	7.1	4.6	-
Nonalcoholic beverages and beverage materials(1)	217.442	-	218.584	5.7	0.5	-
Other food at home	200.286	-	201.538	1.1	0.6	-
Food away from home	265.446	-	265.480	11.0	0.0	-
Alcoholic beverages	230.831	-	229.759	-1.1	-0.5	-
Housing	235.459	-	237.997	5.0	1.1	-
Shelter	270.379	270.860	273.377	5.0	1.1	0.9
Rent of primary residence(2)	280.582	282.047	283.488	4.1	1.0	0.5
Owners' equiv. rent of residences(2)(3)	270.593	271.631	273.192	4.4	1.0	0.6
Owners' equiv. rent of primary residence(2)(3)	270.593	271.631	273.192	4.4	1.0	0.6
Fuels and utilities	272.667	-	280.047	6.8	2.7	-
Household energy	211.797	211.575	218.923	7.7	3.4	3.5
Energy services(2)	213.729	213.474	220.863	7.6	3.3	3.5
Electricity(2)	252.953	253.375	265.444	4.4	4.9	4.8
Utility (piped) gas service(2)	159.584	158.705	161.058	12.9	0.9	1.5
Household furnishings and operations	124.593	-	123.927	3.3	-0.5	-
Apparel	99.686	-	97.955	-3.2	-1.7	-
Transportation	253.473	-	269.089	12.0	6.2	-
Private transportation	257.953	-	274.439	12.7	6.4	-
New and used motor vehicles(4)	-	-	-	-	-	-
New vehicles(1)	-	-	-	-	-	-
Used cars and trucks(1)	351.228	-	413.485	45.8	17.7	-
Motor fuel	249.829	263.419	278.779	48.9	11.6	5.8
Gasoline (all types)	248.463	262.048	277.362	49.0	11.6	5.8
Gasoline, unleaded regular(5)	250.067	263.992	279.674	50.2	11.8	5.9
Gasoline, unleaded midgrade(5)(6)	294.360	310.554	328.039	45.2	11.4	5.6
Gasoline, unleaded premium(5)	256.091	266.850	279.578	38.0	9.2	4.8
Motor vehicle insurance(1)	1,968.081	-	1,972.631	2.3	0.2	-
Medical care	-	-	466.623	-1.0	-	-
Recreation(4)	114.117	-	113.083	0.4	-0.9	-
Education and communication(4)	148.915	-	151.579	5.0	1.8	-
Tuition, other school fees, and childcare(1)	1,330.423	-	1,340.550	0.9	0.8	-
Other goods and services	454.500	-	458.388	2.8	0.9	-
Commodity and service group						
All items	244.708	-	248.876	5.4	1.7	-
Commodities	182.921	-	189.034	9.5	3.3	-
Commodities less food and beverages	154.304	-	162.013	12.2	5.0	-
Nondurables less food and beverages	181.849	-	186.921	10.6	2.8	-
Durables	119.935	-	128.307	-	7.0	-
Services	307.421	-	309.493	2.9	0.7	-

Note: See footnotes at end of table.

Table 1. Consumer Price Index for All Urban Consumers (CPI-U): Indexes and percent changes for selected periods Detroit-Warren-Dearborn, MI (1982-84=100 unless otherwise noted) - Continued

Item and Group	Indexes			Percent change from-		
	Apr. 2021	May 2021	Jun. 2021	Jun. 2020	Apr. 2021	May 2021
Special aggregate indexes						
All items less medical care	235.318	-	240.037	6.0	2.0	-
All items less shelter	237.851	-	242.495	5.6	2.0	-
Commodities less food	157.126	-	164.595	11.5	4.8	-
Nondurables	210.073	-	213.372	7.6	1.6	-
Nondurables less food	185.024	-	189.646	9.5	2.5	-
Services less rent of shelter(3)	361.904	-	362.880	1.0	0.3	-
Services less medical care services	295.699	-	298.461	3.3	0.9	-
Energy	232.936	238.866	249.932	24.9	7.3	4.6
All items less energy	249.078	-	252.283	4.1	1.3	-
All items less food and energy	251.522	-	255.004	3.8	1.4	-

Footnotes

(1) Index on a December 1977=100 base.

(2) This index series was calculated using a Laspeyres estimator. All other item stratum index series were calculated using a geometric means estimator.

(3) Index on a December 1982=100 base.

(4) Indexes on a December 1997=100 base.

(5) Special index based on a substantially smaller sample.

(6) Index on a December 1993=100 base.

- Data not available.

Note: Index applies to a month as a whole, not to any specific date. Data not seasonally adjusted.