

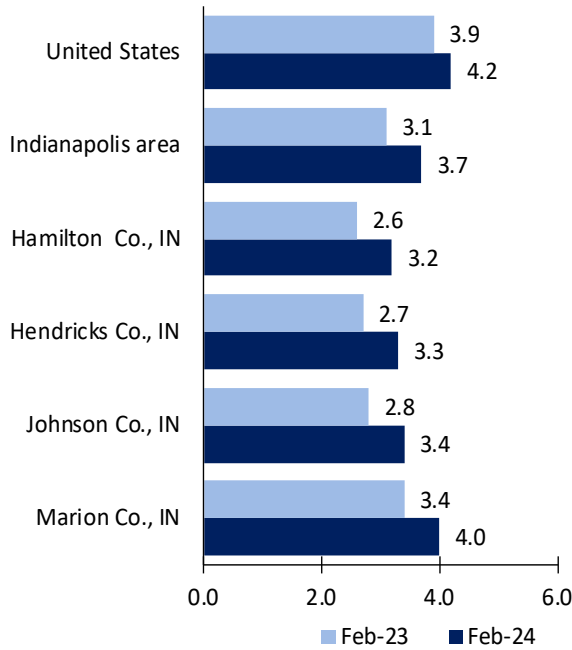
Indianapolis Area Economic Summary

Updated April 03, 2024

This summary presents a sampling of economic information for the area; supplemental data are provided for regions and the nation. Subjects include **unemployment, employment, wages, prices, spending, and benefits**. All data are not seasonally adjusted and some may be subject to revision. Area definitions may differ by subject. For more area summaries and geographic definitions, see www.bls.gov/regions/economic-summaries.htm.

Unemployment rates for the nation and selected areas

Unemployment rates

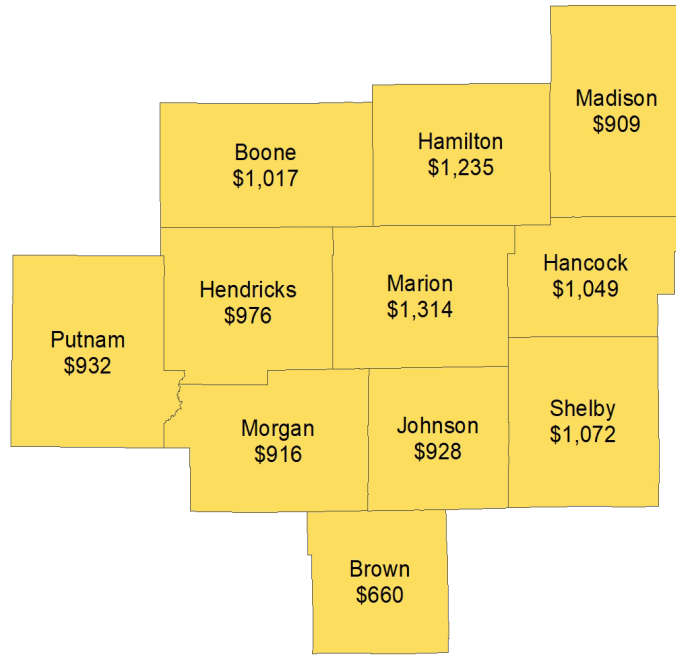


Source: U.S. BLS, Local Area Unemployment Statistics.

Average weekly wages for all industries by county

Indianapolis area, third quarter 2023

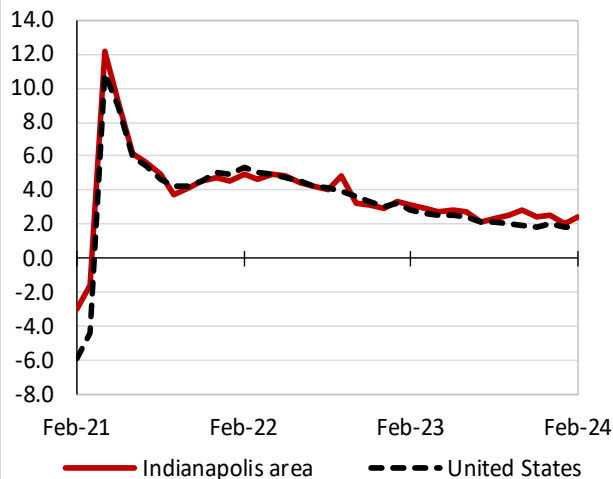
(U.S. = \$1,334; Area = \$1,205)



Source: U.S. BLS, Quarterly Census of Employment and Wages.

Over-the-year changes in employment on nonfarm payrolls and employment by major industry sector

12-month percent changes in employment



Source: U.S. BLS, Current Employment Statistics.

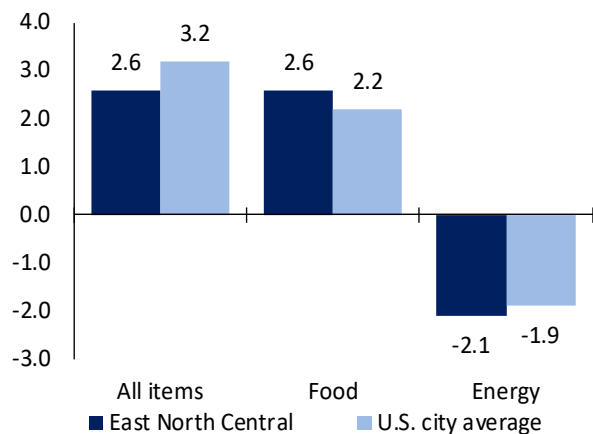
| Indianapolis area employment (number in thousands) | Feb. 2024 | Change from Feb. 2023 to Feb. 2024 | |
|---|-----------|------------------------------------|---------|
| | | Number | Percent |
| Total nonfarm | 1,167.7 | 27.5 | 2.4 |
| Mining and logging | 0.8 | 0.0 | 0.0 |
| Construction | 61.9 | 3.7 | 6.4 |
| Manufacturing | 97.8 | 0.8 | 0.8 |
| Trade, transportation, and utilities | 246.7 | 2.8 | 1.1 |
| Information | 12.0 | -0.4 | -3.2 |
| Financial activities | 74.2 | -0.4 | -0.5 |
| Professional and business services | 184.8 | -0.5 | -0.3 |
| Education and health services | 190.9 | 13.2 | 7.4 |
| Leisure and hospitality | 107.5 | 1.4 | 1.3 |
| Other services | 45.9 | 1.7 | 3.8 |
| Government | 145.2 | 5.2 | 3.7 |

Source: U.S. BLS, Current Employment Statistics.



Over-the-year change in the prices paid by urban consumers for selected categories

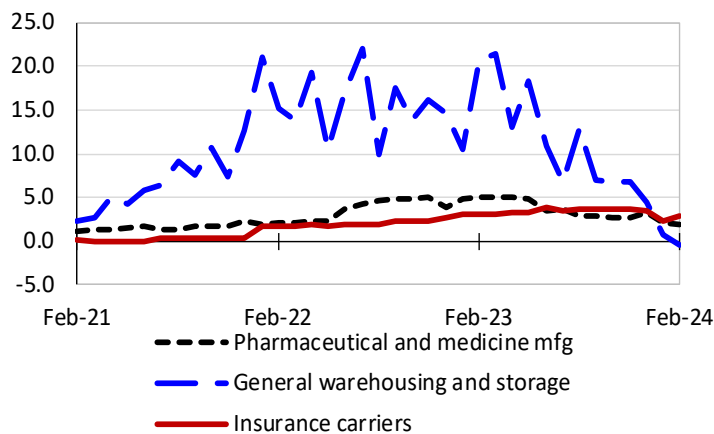
12-month percent change in CPI-U, February 2024



Source: U.S. BLS, Consumer Price Index.

Over-the-year changes in the selling prices received by producers for selected industries nationwide

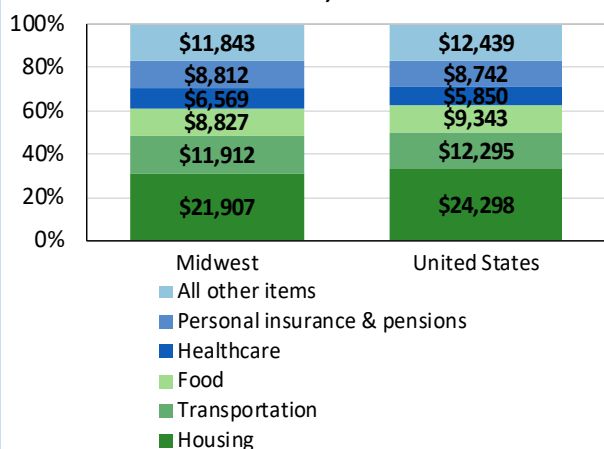
12-month percent changes in PPI



Source: U.S. BLS, Producer Price Index.

Average annual spending and percent distribution for selected categories

Average annual expenditures, United States and Midwest, 2022



Source: U.S. BLS, Consumer Expenditure Survey.

Average hourly wages for selected occupations

| Occupation | Indianapolis area | United States |
|--|-------------------|---------------|
| All occupations | \$29.11 | \$31.48 |
| Insurance sales agents | 37.28 | 38.32 |
| Respiratory therapists | 34.28 | 38.62 |
| Machinists | 24.89 | 26.25 |
| Bookkeeping, accounting, and auditing clerks | 22.99 | 23.84 |
| Laborers and freight, stock, and material movers, hand | 19.38 | 19.12 |
| Waiters and waitresses | 14.74 | 17.56 |

Source: U.S. BLS, Occupational Employment and Wage Statistics, May 2023.

Employer costs per hour worked for wages and selected employee benefits by geographic division

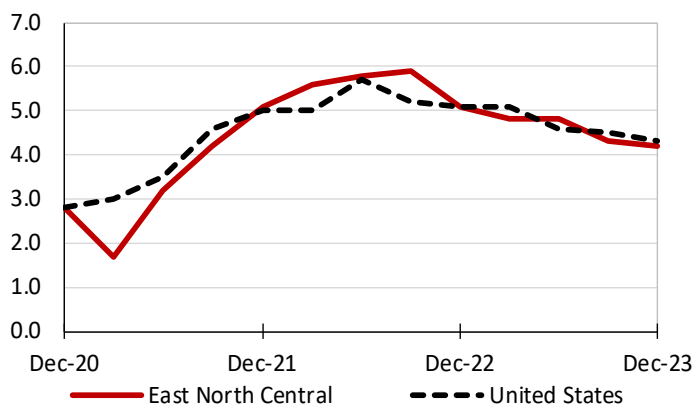
| Private industry, December 2023 | East North Central (1) | United States |
|---------------------------------|------------------------|---------------|
| Total compensation | \$41.90 | \$43.11 |
| Wages and salaries | 29.01 | 30.33 |
| Total benefits | 12.89 | 12.77 |
| Paid leave | 3.05 | 3.26 |
| Vacation | 1.61 | 1.67 |
| Supplemental pay | 1.94 | 1.71 |
| Insurance | 3.31 | 3.14 |
| Retirement and savings | 1.60 | 1.50 |
| Legally required benefits | 3.00 | 3.17 |

(1) The states that compose the East North Central census division are: IL, IN, MI, OH, and WI.

Source: U.S. BLS, Employer Costs for Employee Compensation.

Over-the-year changes in wages and salaries

12-month percent changes in ECI



Source: U.S. BLS, Employment Cost Index.

