

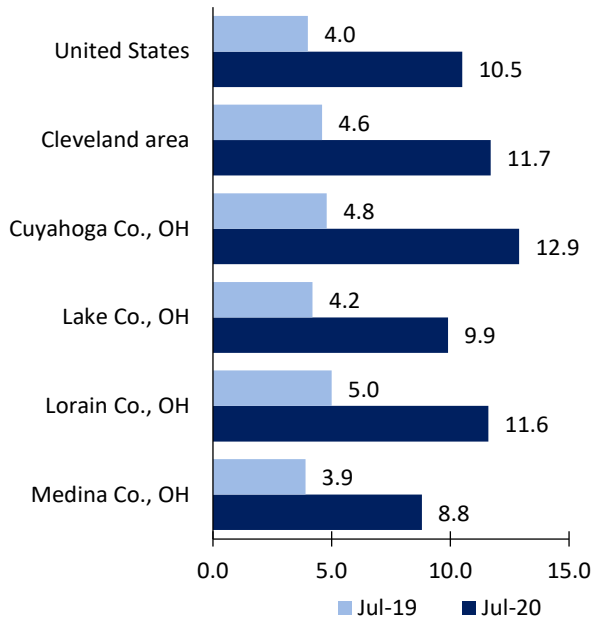
Cleveland Area Economic Summary

Updated September 03, 2020

This summary presents a sampling of economic information for the area; supplemental data are provided for regions and the nation. Subjects include **unemployment, employment, wages, prices, spending, and benefits**. All data are not seasonally adjusted and some may be subject to revision. Area definitions may differ by subject. For more area summaries and geographic definitions, see www.bls.gov/regions/economic-summaries.htm.

Unemployment rates for the nation and selected areas

Unemployment rates

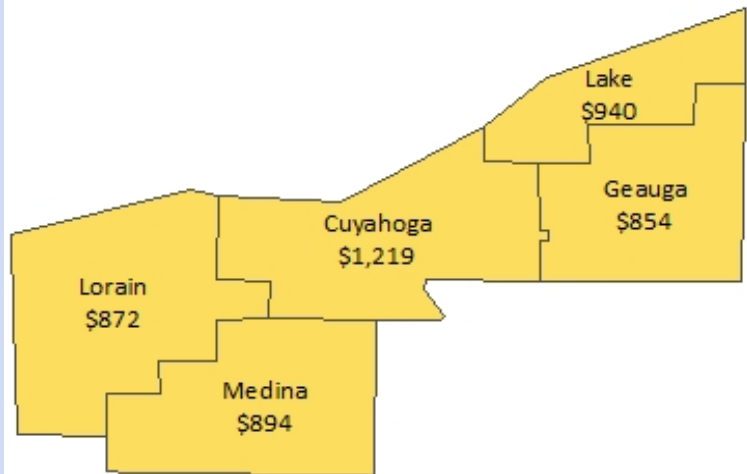


Source: U.S. BLS, Local Area Unemployment Statistics.

Average weekly wages for all industries by county

Cleveland area, first quarter 2020

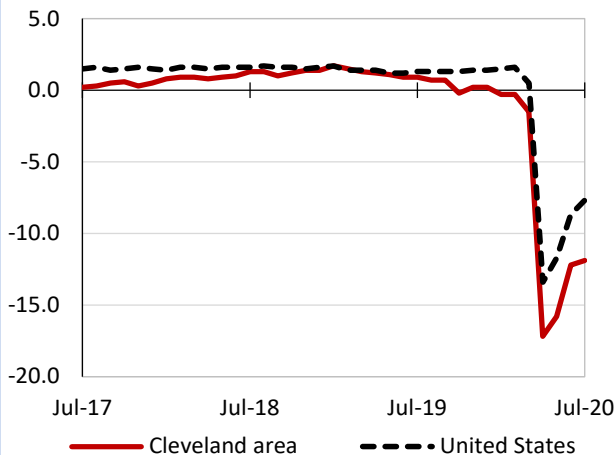
(U.S. = \$1,222; Area = \$1,128)



Source: U.S. BLS, Quarterly Census of Employment and Wages.

Over-the-year changes in employment on nonfarm payrolls and employment by major industry sector

12-month percent changes in employment



Source: U.S. BLS, Current Employment Statistics.

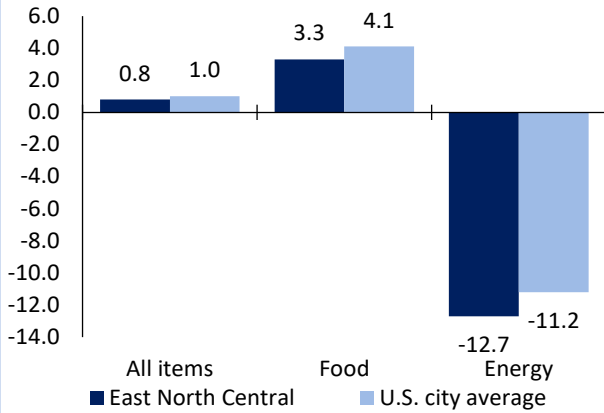
Cleveland area employment (number in thousands)	Jul. 2020	Change from Jul. 2019 to Jul. 2020	
		Number	Percent
Total nonfarm	959.9	-129.3	-11.9
Mining, logging, and construction	41.9	0.3	0.7
Manufacturing	114.3	-9.5	-7.7
Trade, transportation, and utilities	172.8	-13.2	-7.1
Information	12.1	-1.4	-10.4
Financial activities	64.4	-3.8	-5.6
Professional and business services	140.4	-24.9	-15.1
Education and health services	181.8	-21.7	-10.7
Leisure and hospitality	76.8	-34.3	-30.9
Other services	36.4	-3.9	-9.7
Government	119.0	-16.9	-12.4

Source: U.S. BLS, Current Employment Statistics.



Over-the-year change in the prices paid by urban consumers for selected categories

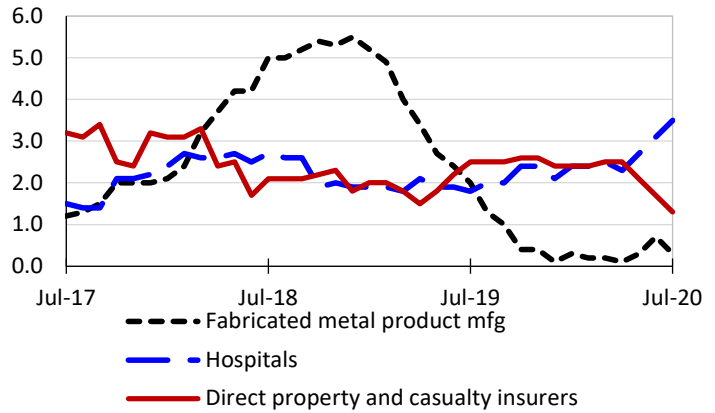
12-month percent change in CPI-U, July 2020



Source: U.S. BLS, Consumer Price Index.

Over-the-year changes in the selling prices received by producers for selected industries nationwide

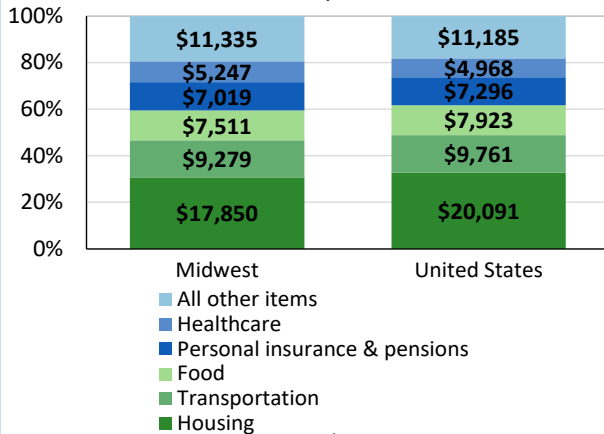
12-month percent changes in PPI



Source: U.S. BLS, Producer Price Index.

Average annual spending and percent distribution for selected categories

Average annual expenditures, United States and Midwest, 2018



Source: U.S. BLS, Consumer Expenditure Survey.

Average hourly wages for selected occupations

Occupation	Cleveland area	United States
All occupations	\$25.03	\$25.72
Accountants and auditors	36.21	38.23
Registered nurses	34.45	37.24
Inspectors, testers, sorters, samplers, and weighers	20.61	20.67
Bill and account collectors	16.79	18.90
Laborers and freight, stock, and material movers, hand	15.41	15.45
Cooks, restaurant	13.15	13.80

Source: U.S. BLS, Occupational Employment Statistics, May 2019.

Employer costs per hour worked for wages and selected employee benefits by geographic division

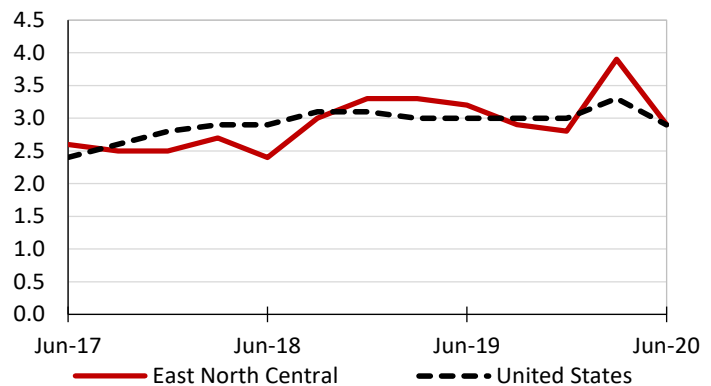
Private industry, March 2020	East North Central (1)	United States
Total compensation	\$34.56	\$35.34
Wages and salaries	23.86	24.82
Total benefits	10.70	10.53
Paid leave	2.40	2.58
Vacation	1.26	1.32
Supplemental pay	1.35	1.19
Insurance	3.03	2.80
Retirement and savings	1.31	1.25
Legally required benefits	2.60	2.70

(1) The states that compose the East North Central census division are: IL, IN, MI, OH, and WI.

Source: U.S. BLS, Employer Costs for Employee Compensation.

Over-the-year changes in wages and salaries

12-month percent changes in ECI



Source: U.S. BLS, Employment Cost Index.

