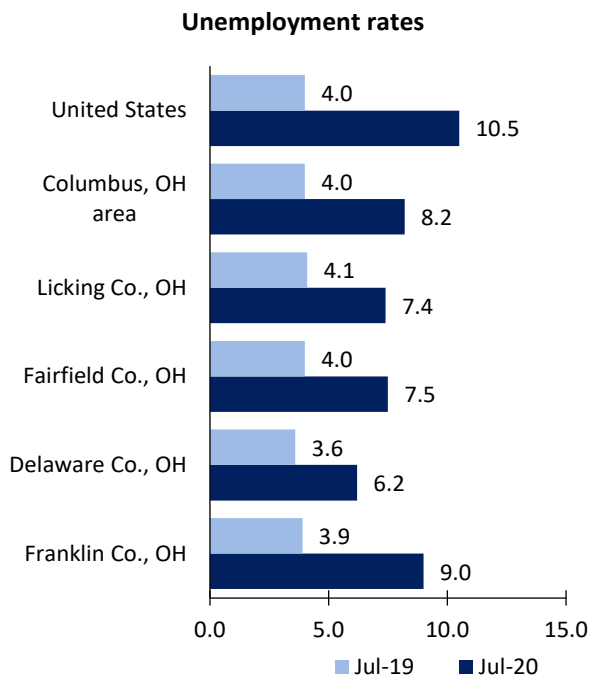


# Columbus, OH Area Economic Summary

Updated September 03, 2020

This summary presents a sampling of economic information for the area; supplemental data are provided for regions and the nation. Subjects include **unemployment, employment, wages, prices, spending, and benefits**. All data are not seasonally adjusted and some may be subject to revision. Area definitions may differ by subject. For more area summaries and geographic definitions, see [www.bls.gov/regions/economic-summaries.htm](http://www.bls.gov/regions/economic-summaries.htm).

## Unemployment rates for the nation and selected areas

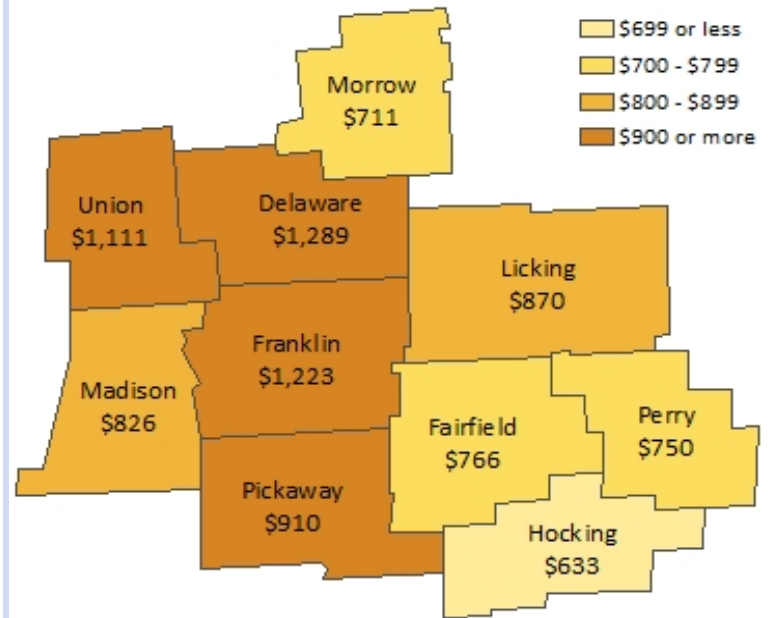


Source: U.S. BLS, Local Area Unemployment Statistics.

## Average weekly wages for all industries by county

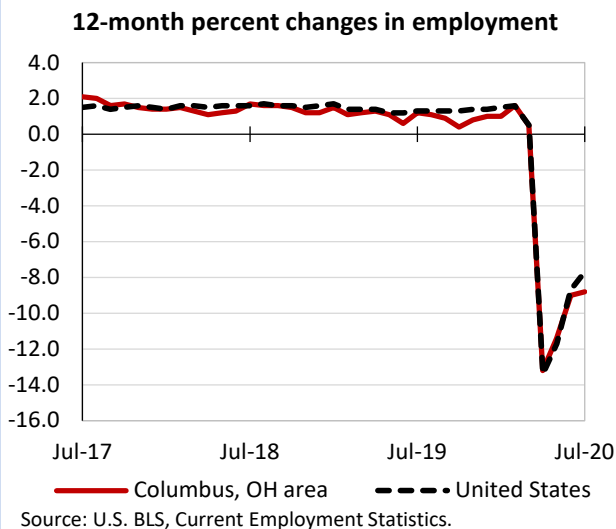
Columbus, OH area, first quarter 2020

(U.S. = \$1,222; Area = \$1,163)



Source: U.S. BLS, Quarterly Census of Employment and Wages.

## Over-the-year changes in employment on nonfarm payrolls and employment by major industry sector



Source: U.S. BLS, Current Employment Statistics.

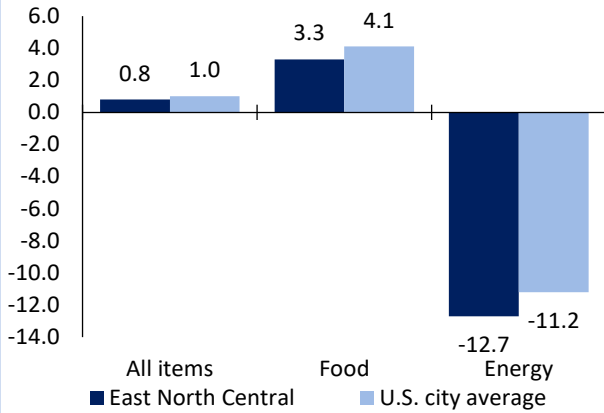
Columbus, OH area employment (number in thousands)	Jul. 2020	Change from Jul. 2019 to Jul. 2020	
		Number	Percent
Total nonfarm	1,018.2	-98.1	-8.8
Mining, logging, and construction	43.4	-2.8	-6.1
Manufacturing	69.5	-4.8	-6.5
Trade, transportation, and utilities	194.5	-17.5	-8.3
Information	16.1	-1.5	-8.5
Financial activities	81.5	-5.9	-6.8
Professional and business services	173.6	-10.1	-5.5
Education and health services	148.1	-15.1	-9.3
Leisure and hospitality	82.9	-30.0	-26.6
Other services	36.5	-6.3	-14.7
Government	172.1	-4.1	-2.3

Source: U.S. BLS, Current Employment Statistics.



Over-the-year change in the prices paid by urban consumers for selected categories

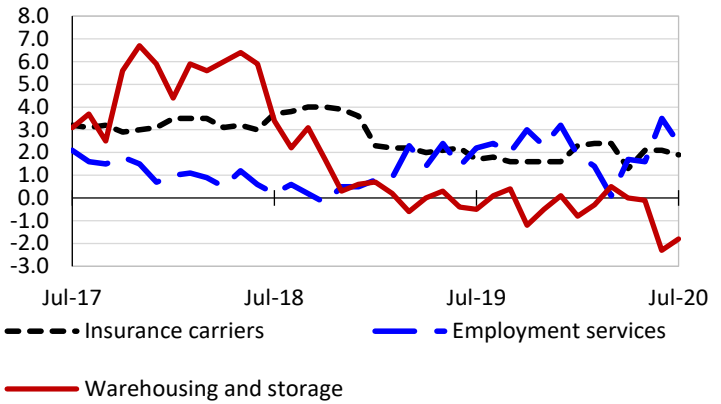
12-month percent change in CPI-U, July 2020



Source: U.S. BLS, Consumer Price Index.

Over-the-year changes in the selling prices received by producers for selected industries nationwide

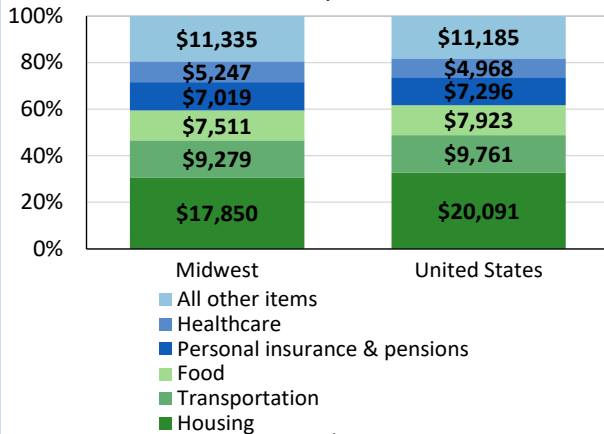
12-month percent changes in PPI



Source: U.S. BLS, Producer Price Index.

Average annual spending and percent distribution for selected categories

Average annual expenditures, United States and Midwest, 2018



Source: U.S. BLS, Consumer Expenditure Survey.

Average hourly wages for selected occupations

Occupation	Columbus, OH area	United States
All occupations	\$25.07	\$25.72
Mechanical engineers	41.08	44.97
Registered nurses	32.83	37.24
Claims adjusters, examiners, and investigators	30.09	33.15
Heavy and tractor-trailer truck drivers	22.51	22.52
Real estate sales agents	21.85	29.83
Customer service representatives	17.86	17.94

Source: U.S. BLS, Occupational Employment Statistics, May 2019.

Employer costs per hour worked for wages and selected employee benefits by geographic division

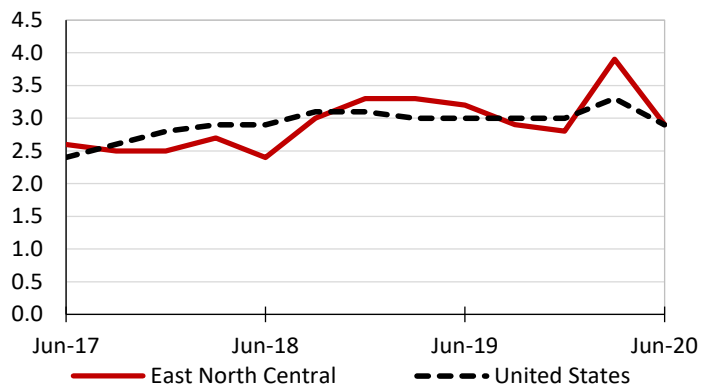
Private industry, March 2020	East North Central (1)	United States
Total compensation	\$34.56	\$35.34
Wages and salaries	23.86	24.82
Total benefits	10.70	10.53
Paid leave	2.40	2.58
Vacation	1.26	1.32
Supplemental pay	1.35	1.19
Insurance	3.03	2.80
Retirement and savings	1.31	1.25
Legally required benefits	2.60	2.70

(1) The states that compose the East North Central census division are: IL, IN, MI, OH, and WI.

Source: U.S. BLS, Employer Costs for Employee Compensation.

Over-the-year changes in wages and salaries

12-month percent changes in ECI



Source: U.S. BLS, Employment Cost Index.

