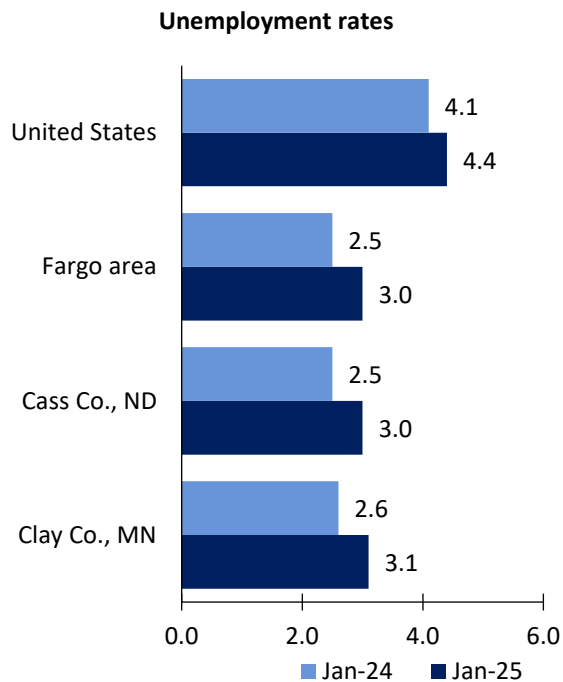


# Fargo Area Economic Summary

Updated March 26, 2025

This summary presents a sampling of economic information for the area; supplemental data are provided for regions and the nation. Subjects include **unemployment, employment, wages, prices, spending, and benefits**. All data are not seasonally adjusted and some may be subject to revision. Area definitions may differ by subject. For more area summaries and geographic definitions, see <https://www.bls.gov/regions/economic-summaries.htm>.

## Unemployment rates for the nation and selected areas



Source: U.S. BLS, Local Area Unemployment Statistics.

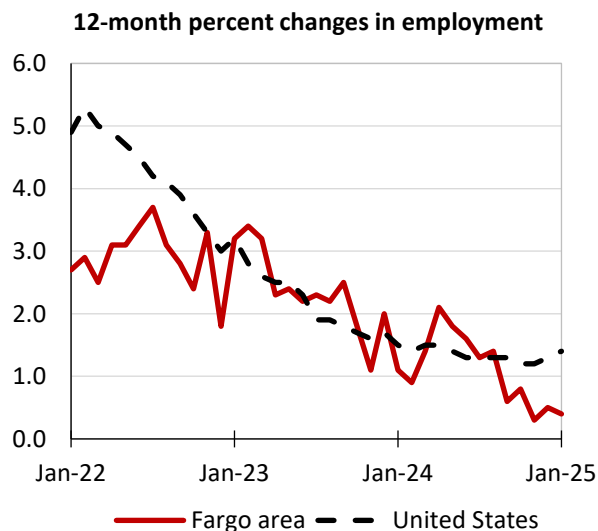
## Average weekly wages for all industries by county

**Fargo area, third quarter 2024**  
(U.S. = \$1,394; Area = \$1,253)



Source: U.S. BLS, Quarterly Census of Employment and Wages.

## Employment on nonfarm payrolls and employment by major industry sector, over-the-year changes



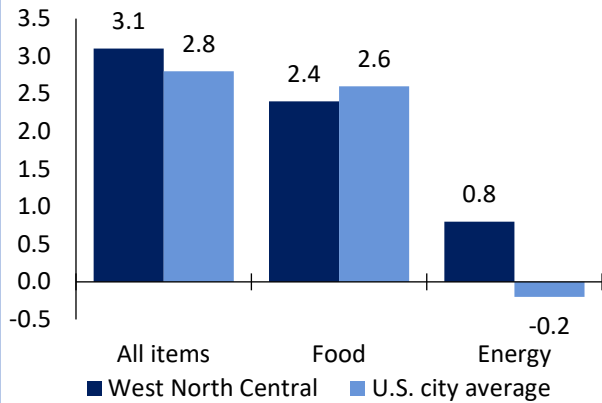
| Fargo area employment<br>(number in thousands) | Jan. 2025 | Change from Jan.<br>2024 to Jan. 2025 |         |
|--|-----------|---------------------------------------|---------|
|  |           | Number                                | Percent |
| Total nonfarm                                  | 150.0     | 0.6                                   | 0.4     |
| Mining, logging, and construction              | 8.8       | -0.5                                  | -5.4    |
| Manufacturing                                  | 12.1      | 0.2                                   | 1.7     |
| Trade, transportation, and utilities           | 32.1      | 0.3                                   | 0.9     |
| Information                                    | 2.3       | -0.1                                  | -4.2    |
| Financial activities                           | 10.6      | -0.2                                  | -1.9    |
| Professional and business services             | 14.0      | -0.5                                  | -3.4    |
| Education and health services                  | 30.1      | 1.5                                   | 5.2     |
| Leisure and hospitality                        | 14.2      | -0.4                                  | -2.7    |
| Other services                                 | 4.9       | 0.1                                   | 2.1     |
| Government                                     | 20.9      | 0.2                                   | 1.0     |

Source: U.S. BLS, Current Employment Statistics.



Prices paid by urban consumers for selected categories, over-the-year change

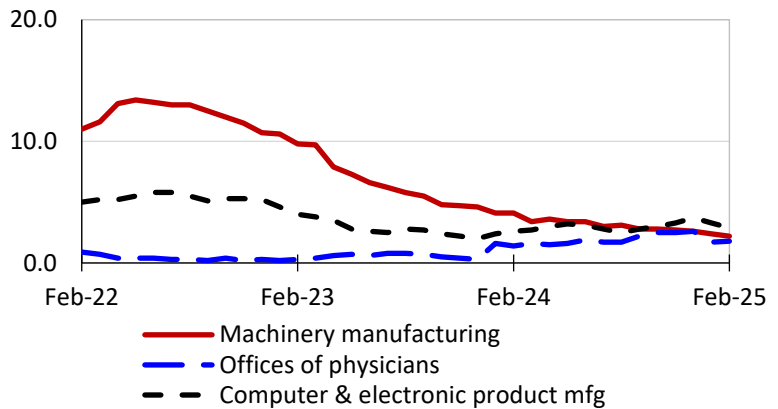
**12-month percent change in CPI-U, February 2025**



Source: U.S. BLS, Consumer Price Index.

Selling prices received by producers for selected industries nationwide, over-the-year change

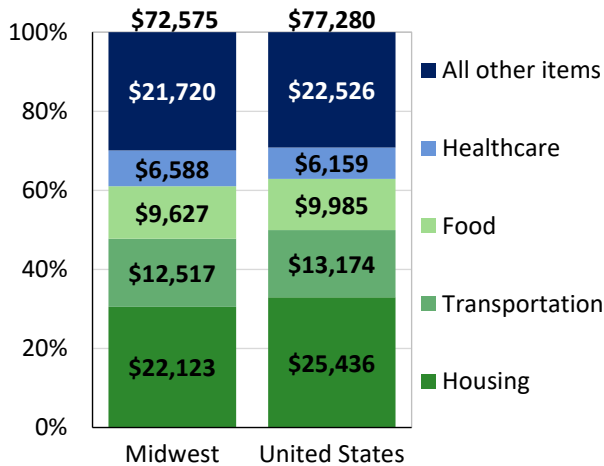
**12-month percent changes in PPI**



Source: U.S. BLS, Producer Price Index.

Average annual spending and percent distribution for selected categories

**Average annual expenditures, 2023**



Source: U.S. BLS, Consumer Expenditure Survey.

Average hourly wages for selected occupations, May 2023

| Occupation                               | Fargo area | United States |
|--|------------|---------------|
| All occupations                          | \$28.54    | \$31.48       |
| General and operations managers          | 56.52      | 62.18         |
| Registered nurses                        | 37.81      | 45.42         |
| Heavy and tractor-trailer truck drivers  | 27.35      | 26.92         |
| Welders, cutters, solderers, and brazers | 25.83      | 25.31         |
| Customer service representatives         | 20.88      | 20.92         |
| Security guards                          | 20.34      | 19.44         |

Source: U.S. BLS, Occupational Employment and Wage Statistics

Employer costs per hour worked for wages and selected employee benefits by geographic division

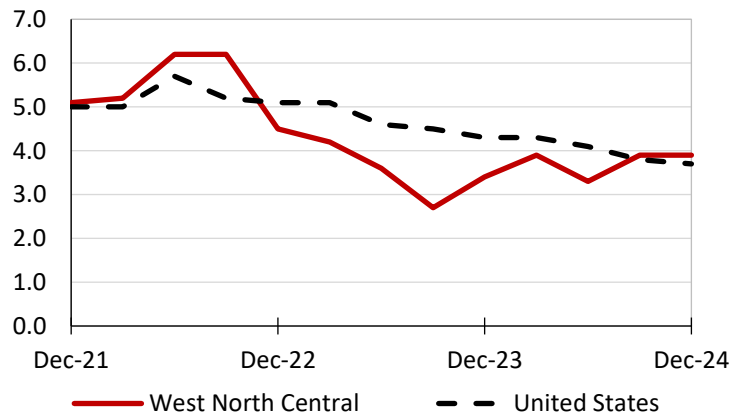
| Private industry, December 2024 | West North Central | United States |
|---------------------------------|--------------------|---------------|
| Total compensation              | \$39.29            | \$44.67       |
| Wages and salaries              | 27.72              | 31.47         |
| Total benefits                  | 11.57              | 13.20         |
| Paid leave                      | 2.78               | 3.38          |
| Vacation                        | 1.43               | 1.71          |
| Supplemental pay                | 1.58               | 1.84          |
| Insurance                       | 3.17               | 3.22          |
| Retirement and savings          | 1.14               | 1.52          |
| Legally required benefits       | 2.91               | 3.24          |

Map of Census Regions and Divisions

Source: U.S. BLS, Employer Costs for Employee Compensation.

Changes in wages and salaries over-the-year

**12-month percent changes in ECI**



Source: U.S. BLS, Employment Cost Index.