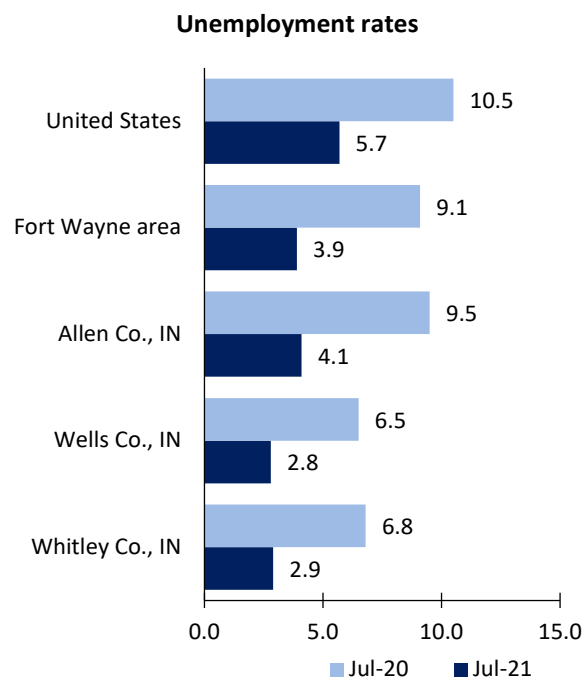


# Fort Wayne Area Economic Summary

Updated September 02, 2021

This summary presents a sampling of economic information for the area; supplemental data are provided for regions and the nation. Subjects include **unemployment, employment, wages, prices, spending, and benefits**. All data are not seasonally adjusted and some may be subject to revision. Area definitions may differ by subject. For more area summaries and geographic definitions, see [www.bls.gov/regions/economic-summaries.htm](http://www.bls.gov/regions/economic-summaries.htm).

## Unemployment rates for the nation and selected areas

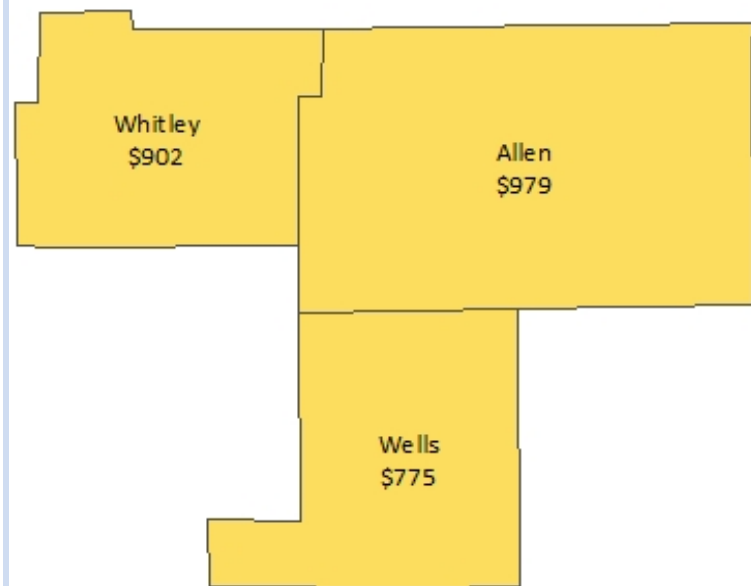


Source: U.S. BLS, Local Area Unemployment Statistics.

## Average weekly wages for all industries by county

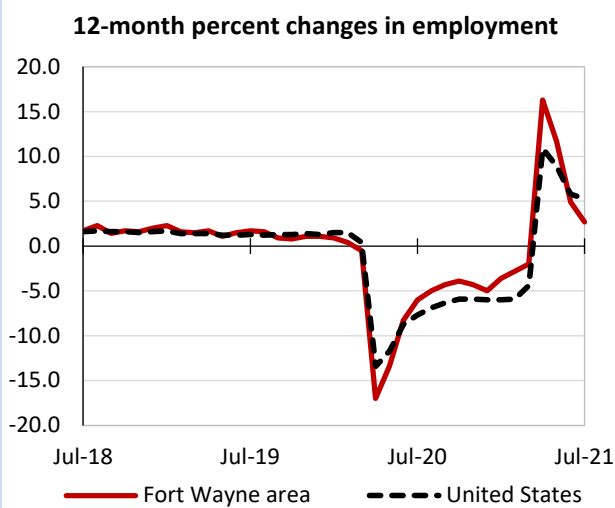
Fort Wayne area, first quarter 2021

(U.S. = \$1,289; Area = \$963)



Source: U.S. BLS, Quarterly Census of Employment and Wages.

## Over-the-year changes in employment on nonfarm payrolls and employment by major industry sector



Source: U.S. BLS, Current Employment Statistics.

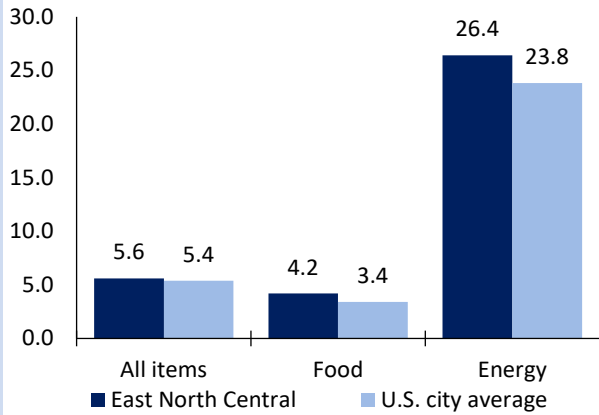
Fort Wayne area employment (number in thousands)	Jul. 2021	Change from Jul. 2020 to Jul. 2021	
		Number	Percent
Total nonfarm	218.6	5.8	2.7
Mining, logging, and construction	12.2	0.2	1.7
Manufacturing	36.6	2.1	6.1
Trade, transportation, and utilities	44.1	0.9	2.1
Information	2.0	-0.1	-4.8
Financial activities	12.1	-0.1	-0.8
Professional and business services	22.6	1.4	6.6
Education and health services	41.6	0.6	1.5
Leisure and hospitality	20.5	1.5	7.9
Other services	10.7	0.0	0.0
Government	16.2	-0.7	-4.1

Source: U.S. BLS, Current Employment Statistics.



Over-the-year change in the prices paid by urban consumers for selected categories

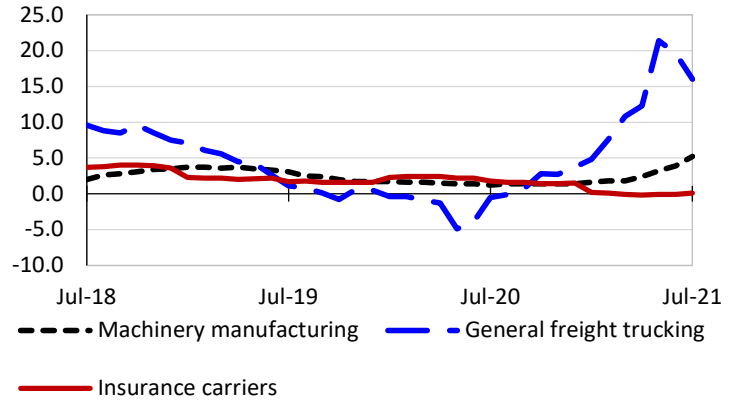
12-month percent change in CPI-U, July 2021



Source: U.S. BLS, Consumer Price Index.

Over-the-year changes in the selling prices received by producers for selected industries nationwide

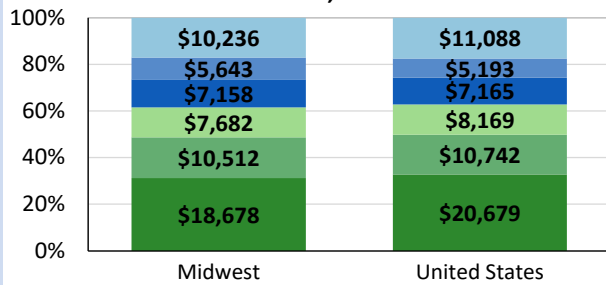
12-month percent changes in PPI



Source: U.S. BLS, Producer Price Index.

Average annual spending and percent distribution for selected categories

Average annual expenditures, United States and Midwest, 2019



Source: U.S. BLS, Consumer Expenditure Survey.

Average hourly wages for selected occupations

Occupation	Fort Wayne area	United States
All occupations	\$23.11	\$27.07
General and operations managers	55.31	60.45
Mechanical engineers	41.62	45.94
Registered nurses	30.07	38.47
Bookkeeping, accounting, and auditing clerks	19.67	21.20
Parts salespersons	17.28	17.48
Laborers and freight, stock, and material movers, hand	15.04	16.21

Source: U.S. BLS, Occupational Employment and Wage Statistics, May 2020.

Employer costs per hour worked for wages and selected employee benefits by geographic division

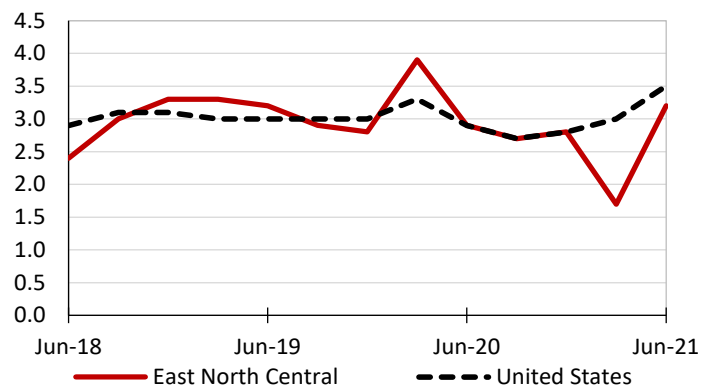
Private industry, March 2021	East North Central (1)	United States
Total compensation	\$36.02	\$36.64
Wages and salaries	24.83	25.80
Total benefits	11.20	10.83
Paid leave	2.56	2.72
Vacation	1.36	1.39
Supplemental pay	1.44	1.27
Insurance	3.09	2.83
Retirement and savings	1.46	1.25
Legally required benefits	2.65	2.77

(1) The states that compose the East North Central census division are: IL, IN, MI, OH, and WI.

Source: U.S. BLS, Employer Costs for Employee Compensation.

Over-the-year changes in wages and salaries

12-month percent changes in ECI



Source: U.S. BLS, Employment Cost Index.