

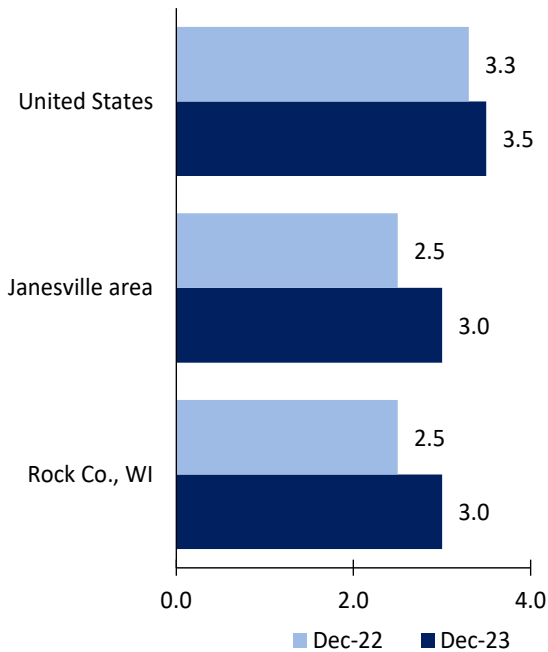
Janesville Area Economic Summary

Updated March 05, 2024

This summary presents a sampling of economic information for the area; supplemental data are provided for regions and the nation. Subjects include **unemployment, employment, wages, prices, spending, and benefits**. All data are not seasonally adjusted and some may be subject to revision. Area definitions may differ by subject. For more area summaries and geographic definitions, see www.bls.gov/regions/economic-summaries.htm.

Unemployment rates for the nation and selected areas

Unemployment rates

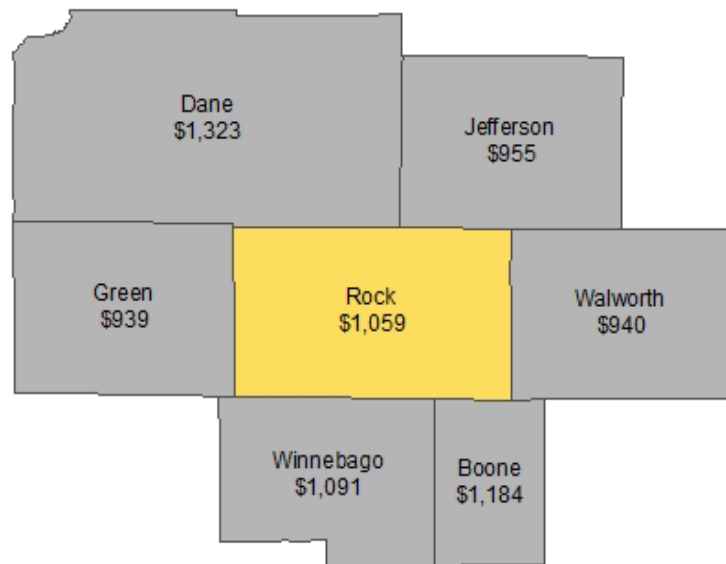


Source: U.S. BLS, Local Area Unemployment Statistics.

Average weekly wages for all industries by county

Janesville area, second quarter 2023

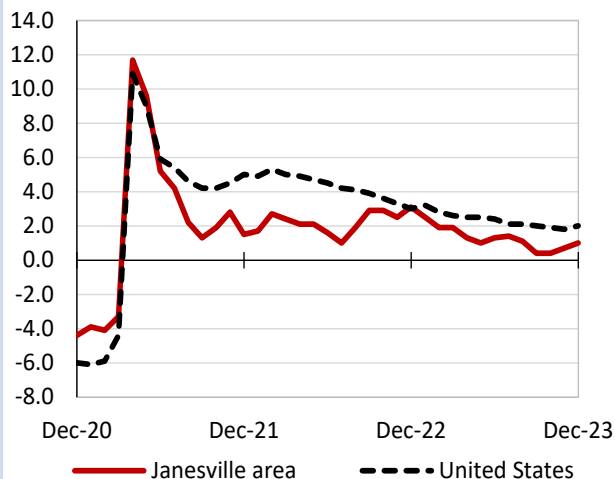
(U.S. = \$1,332; Area = \$1,059)



Source: U.S. BLS, Quarterly Census of Employment and Wages.

Over-the-year changes in employment on nonfarm payrolls and employment by major industry sector

12-month percent changes in employment



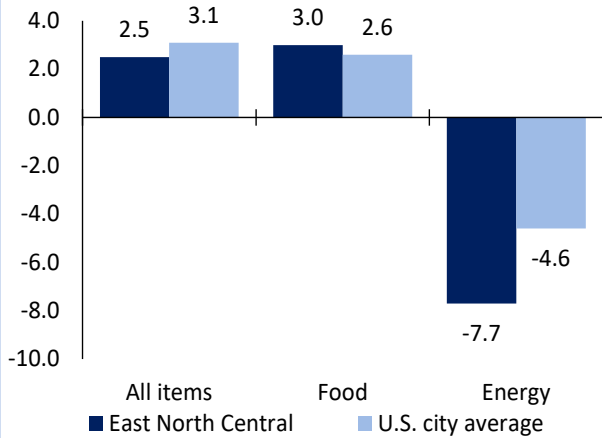
Source: U.S. BLS, Current Employment Statistics.

| Janesville area employment (number in thousands) | Dec. 2023 | Change from Dec. 2022 to Dec. 2023 | |
|---|-----------|---------------------------------------|---------|
| | | Number | Percent |
| Total nonfarm | 71.0 | 0.7 | 1.0 |
| Mining, logging, and construction | 4.0 | 0.1 | 2.6 |
| Manufacturing | 11.3 | 0.0 | 0.0 |
| Trade, transportation, and utilities | 17.4 | 0.1 | 0.6 |
| Information | 0.8 | 0.0 | 0.0 |
| Financial activities | 1.7 | 0.0 | 0.0 |
| Professional and business services | 6.4 | -0.1 | -1.5 |
| Education and health services | 11.2 | 0.4 | 3.7 |
| Leisure and hospitality | 6.6 | 0.3 | 4.8 |
| Other services | 3.3 | 0.0 | 0.0 |
| Government | 8.3 | -0.1 | -1.2 |

Source: U.S. BLS, Current Employment Statistics.

Over-the-year change in the prices paid by urban consumers for selected categories

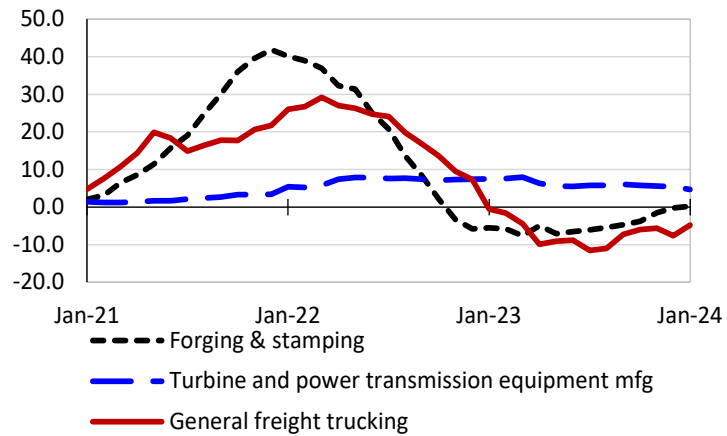
12-month percent change in CPI-U, January 2024



Source: U.S. BLS, Consumer Price Index.

Over-the-year changes in the selling prices received by producers for selected industries nationwide

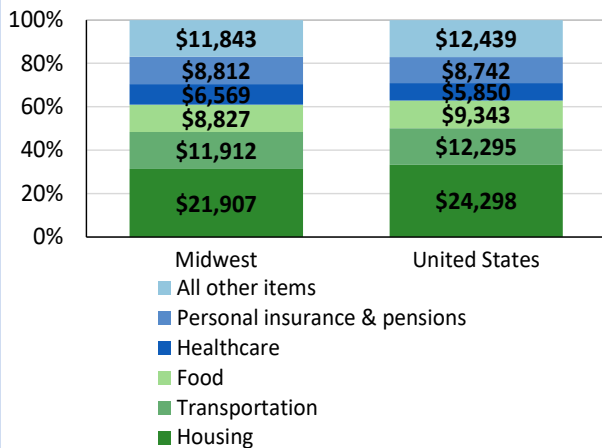
12-month percent changes in PPI



Source: U.S. BLS, Producer Price Index.

Average annual spending and percent distribution for selected categories

Average annual expenditures, United States and Midwest, 2022



Source: U.S. BLS, Consumer Expenditure Survey.

Average hourly wages for selected occupations

| Occupation | Janesville area | United States |
|--|-----------------|---------------|
| All occupations | \$25.61 | \$29.76 |
| Registered nurses | 38.53 | 42.80 |
| Customer service representatives | 19.42 | 19.80 |
| Inspectors, testers, sorters, samplers, and weighers | 19.15 | 22.74 |
| Laborers and freight, stock, and material movers, hand | 18.30 | 18.03 |
| Cashiers | 13.19 | 13.81 |
| Fast food and counter workers | 11.82 | 13.53 |

Source: U.S. BLS, Occupational Employment and Wage Statistics, May 2022.

Employer costs per hour worked for wages and selected employee benefits by geographic division

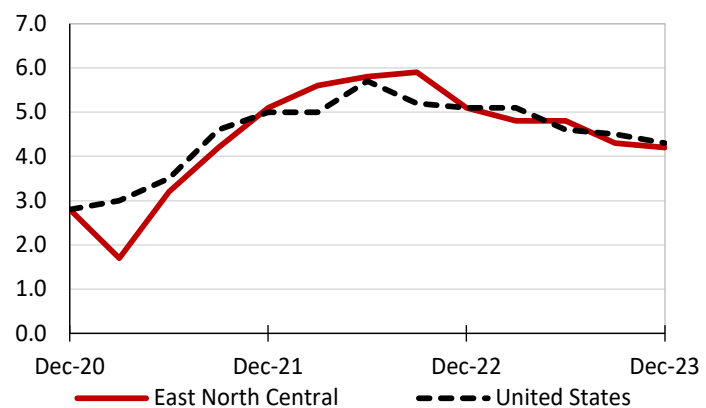
| Private industry, September 2023 | East North Central (1) | United States |
|----------------------------------|------------------------|---------------|
| Total compensation | \$42.14 | \$41.53 |
| Wages and salaries | 29.10 | 29.34 |
| Total benefits | 13.03 | 12.19 |
| Paid leave | 3.13 | 3.09 |
| Vacation | 1.67 | 1.59 |
| Supplemental pay | 1.86 | 1.55 |
| Insurance | 3.34 | 3.04 |
| Retirement and savings | 1.68 | 1.41 |
| Legally required benefits | 3.03 | 3.11 |

(1) The states that compose the East North Central census division are: IL, IN, MI, OH, and WI.

Source: U.S. BLS, Employer Costs for Employee Compensation.

Over-the-year changes in wages and salaries

12-month percent changes in ECI



Source: U.S. BLS, Employment Cost Index.