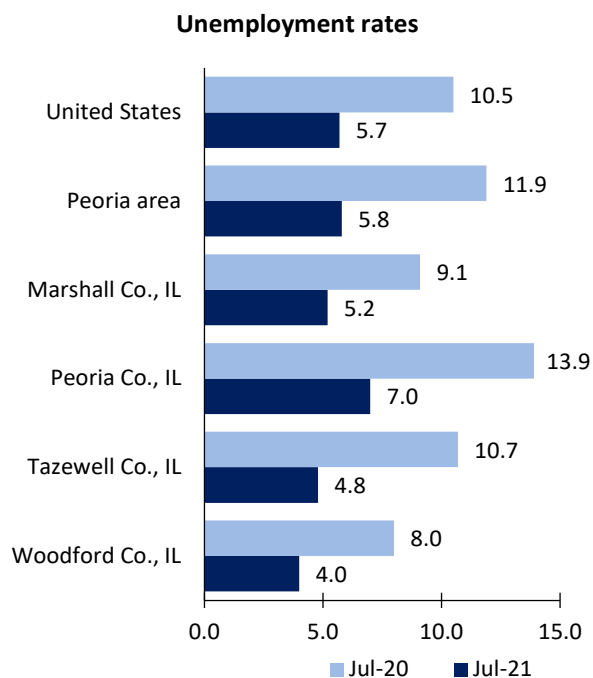


# Peoria Area Economic Summary

Updated September 02, 2021

This summary presents a sampling of economic information for the area; supplemental data are provided for regions and the nation. Subjects include **unemployment, employment, wages, prices, spending, and benefits**. All data are not seasonally adjusted and some may be subject to revision. Area definitions may differ by subject. For more area summaries and geographic definitions, see [www.bls.gov/regions/economic-summaries.htm](http://www.bls.gov/regions/economic-summaries.htm).

## Unemployment rates for the nation and selected areas

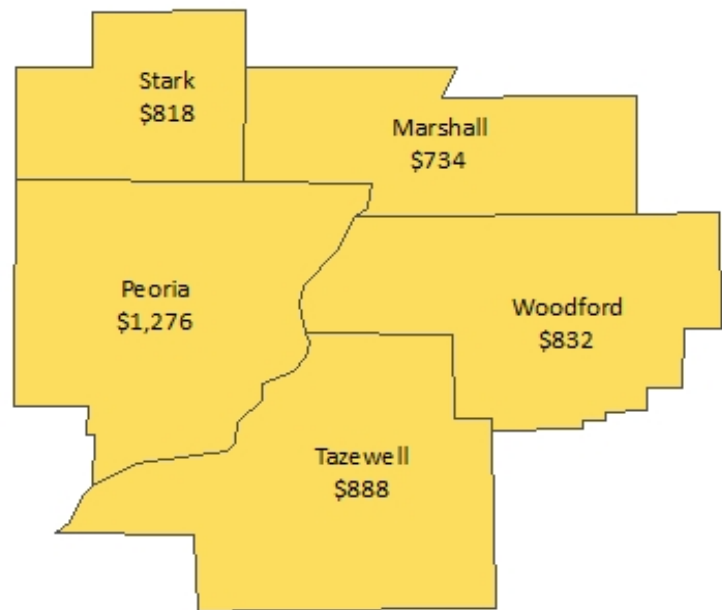


Source: U.S. BLS, Local Area Unemployment Statistics.

## Average weekly wages for all industries by county

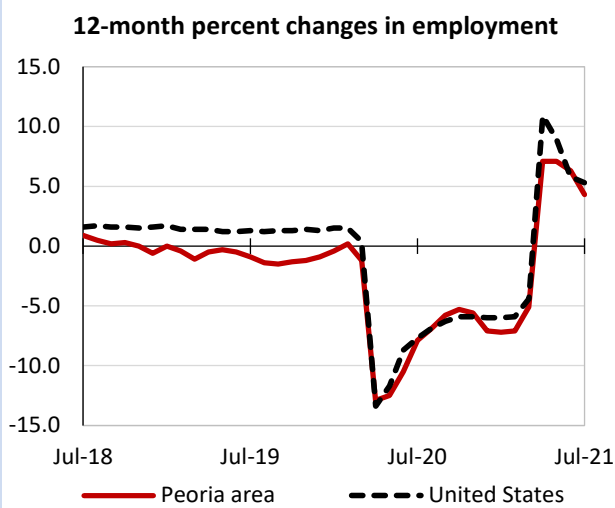
Peoria area, first quarter 2021

(U.S. = \$1,289; Area = \$1,126)



Source: U.S. BLS, Quarterly Census of Employment and Wages.

## Over-the-year changes in employment on nonfarm payrolls and employment by major industry sector



Source: U.S. BLS, Current Employment Statistics.

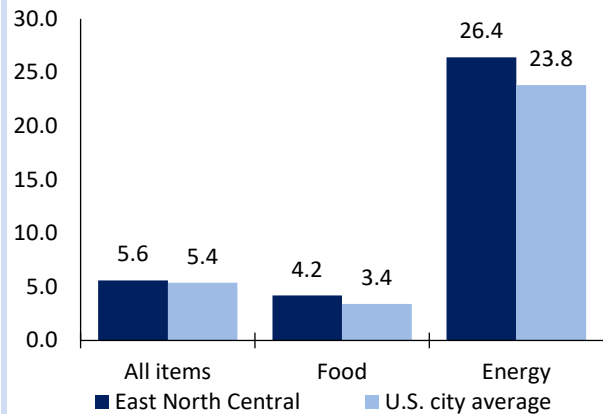
Peoria area employment (number in thousands)	Jul. 2021	Change from Jul. 2020 to Jul. 2021	
		Number	Percent
Total nonfarm	165.5	6.8	4.3
Mining, logging, and construction	8.5	0.1	1.2
Manufacturing	21.0	0.6	2.9
Trade, transportation, and utilities	30.7	0.0	0.0
Information	1.5	0.0	0.0
Financial activities	6.9	-0.3	-4.2
Professional and business services	20.4	-0.3	-1.4
Education and health services	33.0	2.3	7.5
Leisure and hospitality	16.5	1.9	13.0
Other services	7.8	0.3	4.0
Government	19.2	2.2	12.9

Source: U.S. BLS, Current Employment Statistics.



Over-the-year change in the prices paid by urban consumers for selected categories

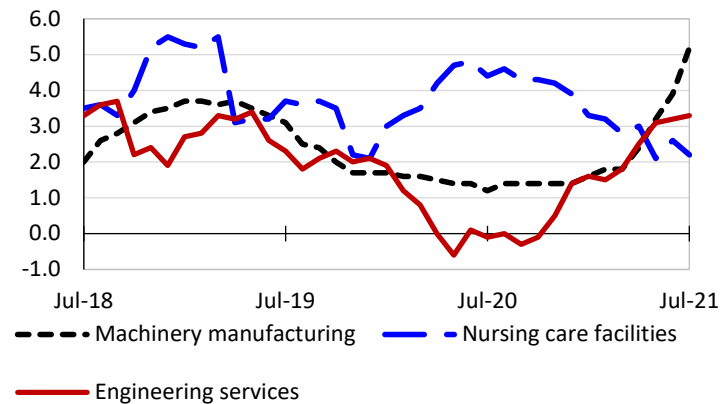
12-month percent change in CPI-U, July 2021



Source: U.S. BLS, Consumer Price Index.

Over-the-year changes in the selling prices received by producers for selected industries nationwide

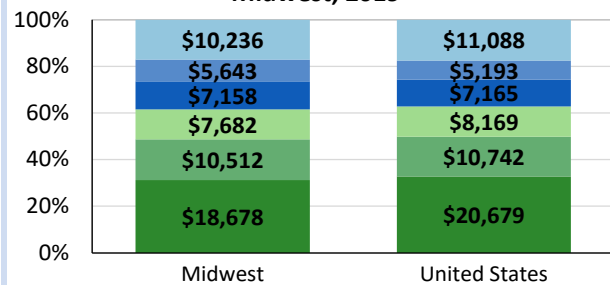
12-month percent changes in PPI



Source: U.S. BLS, Producer Price Index.

Average annual spending and percent distribution for selected categories

Average annual expenditures, United States and Midwest, 2019



Source: U.S. BLS, Consumer Expenditure Survey.

Average hourly wages for selected occupations

Occupation	Peoria area	United States
All occupations	\$26.12	\$27.07
Medical and health services managers	61.18	57.12
Registered nurses	32.97	38.47
Welders, cutters, solderers, and brazers	22.57	22.45
Industrial truck and tractor operators	19.22	18.85
Office clerks, general	18.03	18.16
Waiters and waitresses	10.60	13.20

Source: U.S. BLS, Occupational Employment and Wage Statistics, May 2020.

Employer costs per hour worked for wages and selected employee benefits by geographic division

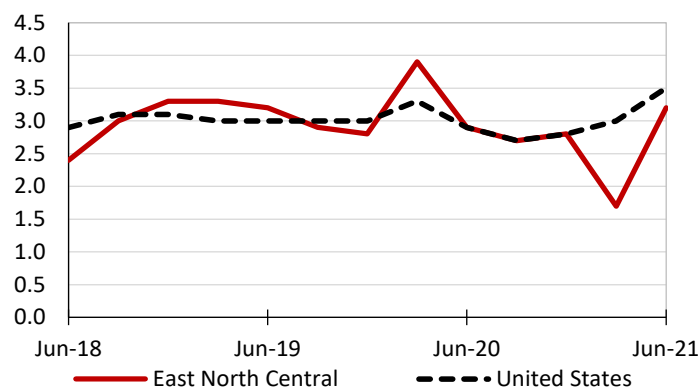
Private industry, March 2021	East North Central (1)	United States
Total compensation	\$36.02	\$36.64
Wages and salaries	24.83	25.80
Total benefits	11.20	10.83
Paid leave	2.56	2.72
Vacation	1.36	1.39
Supplemental pay	1.44	1.27
Insurance	3.09	2.83
Retirement and savings	1.46	1.25
Legally required benefits	2.65	2.77

(1) The states that compose the East North Central census division are: IL, IN, MI, OH, and WI.

Source: U.S. BLS, Employer Costs for Employee Compensation.

Over-the-year changes in wages and salaries

12-month percent changes in ECI



Source: U.S. BLS, Employment Cost Index.

