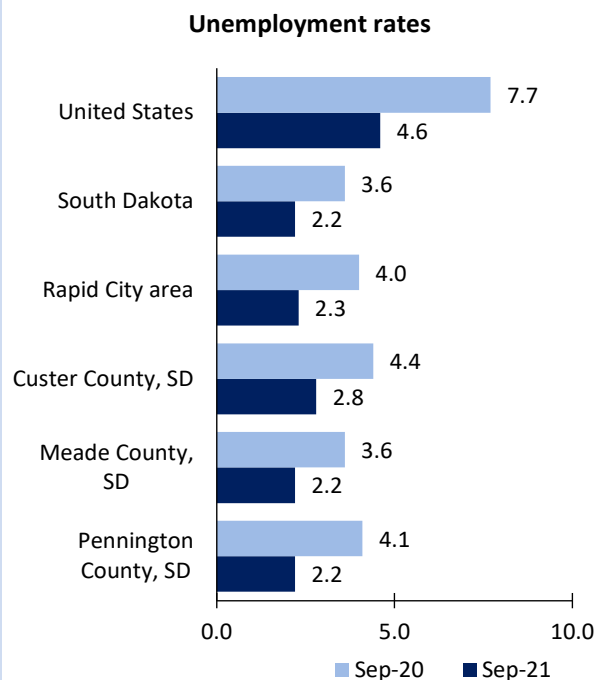


# Rapid City Area Economic Summary

Updated November 04, 2021

This summary presents a sampling of economic information for the area; supplemental data are provided for regions and the nation. Subjects include **unemployment, employment, wages, prices, spending, and benefits**. All data are not seasonally adjusted and some may be subject to revision. Area definitions may differ by subject. For more area summaries and geographic definitions, see [www.bls.gov/regions/economic-summaries.htm](http://www.bls.gov/regions/economic-summaries.htm).

## Unemployment rates for the nation and selected areas

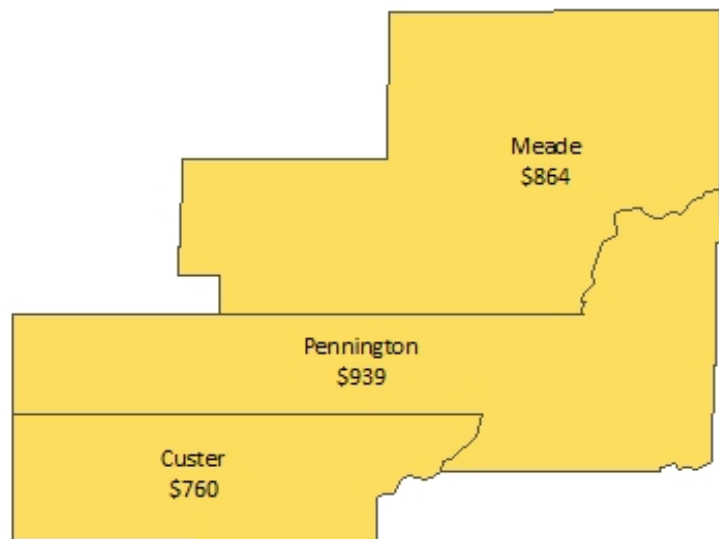


Source: U.S. BLS, Local Area Unemployment Statistics.

## Average weekly wages for all industries by county

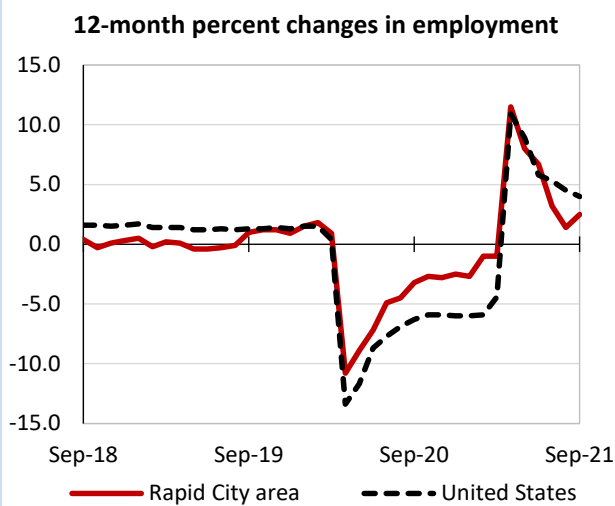
### Rapid City area, first quarter 2021

(U.S. = \$1,289; Area = \$925)



Source: U.S. BLS, Quarterly Census of Employment and Wages.

## Over-the-year changes in employment on nonfarm payrolls and employment by major industry sector



Source: U.S. BLS, Current Employment Statistics.

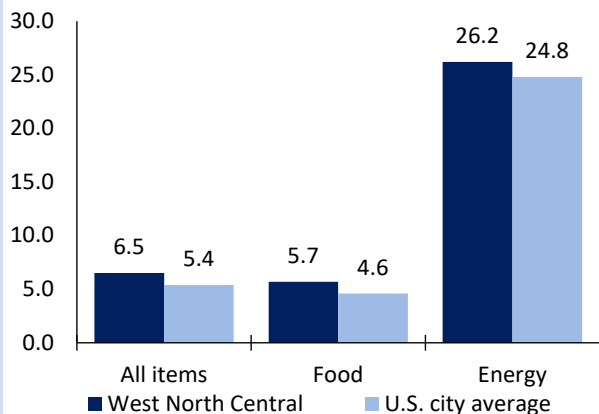
Rapid City area employment (number in thousands)	Sep. 2021	Change from Sep. 2020 to Sep. 2021	
		Number	Percent
Total nonfarm	70.2	1.7	2.5
Mining, logging, and construction	5.3	-0.2	-3.6
Manufacturing	2.9	0.1	3.6
Trade, transportation, and utilities	13.9	0.6	4.5
Information	0.7	0.0	0.0
Financial activities	3.5	0.0	0.0
Professional and business services	5.7	-0.3	-5.0
Education and health services	12.5	0.3	2.5
Leisure and hospitality	11.3	1.2	11.9
Other services	3.5	0.1	2.9
Government	10.9	-0.1	-0.9

Source: U.S. BLS, Current Employment Statistics.



Over-the-year change in the prices paid by urban consumers for selected categories

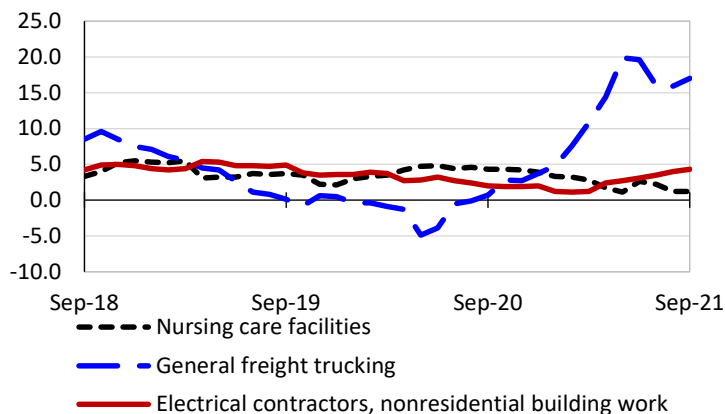
12-month percent change in CPI-U, September 2021



Source: U.S. BLS, Consumer Price Index.

Over-the-year changes in the selling prices received by producers for selected industries nationwide

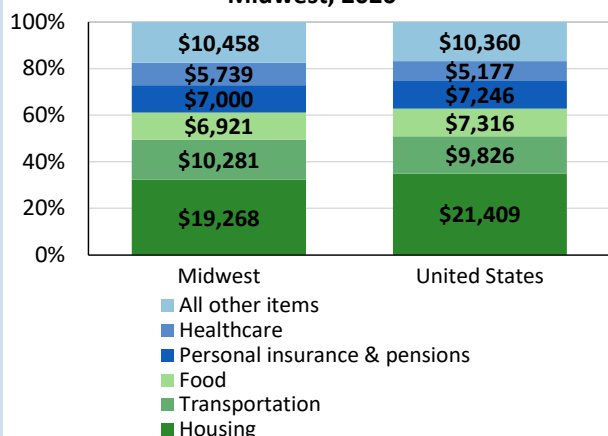
12-month percent changes in PPI



Source: U.S. BLS, Producer Price Index.

Average annual spending and percent distribution for selected categories

Average annual expenditures, United States and Midwest, 2020



Source: U.S. BLS, Consumer Expenditure Survey.

Average hourly wages for selected occupations

Occupation	Rapid City area	United States
All occupations	\$21.47	\$27.07
Accountants and auditors	32.85	39.26
Registered nurses	29.58	38.47
Bookkeeping, accounting, and auditing clerks	17.37	21.20
Retail salespersons	16.83	14.87
Janitors and cleaners, except maids and housekeeping cleaners	13.46	15.10
Fast food and counter workers	11.06	11.80

Source: U.S. BLS, Occupational Employment and Wage Statistics, May 2020.

Employer costs per hour worked for wages and selected employee benefits by geographic division

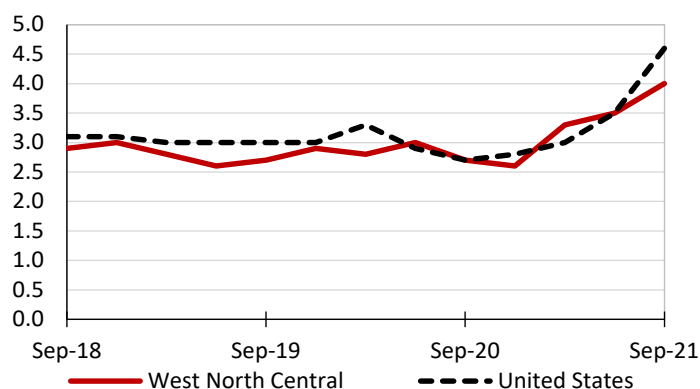
Private industry, June 2021	West North Central (1)	United States
Total compensation	\$32.90	\$36.64
Wages and salaries	22.87	25.89
Total benefits	10.03	10.76
Paid leave	2.35	2.70
Vacation	1.21	1.38
Supplemental pay	1.13	1.25
Insurance	3.02	2.79
Retirement and savings	1.03	1.25
Legally required benefits	2.50	2.77

(1) The states that compose the West North Central census division are: IA, KS, MN, MO, NE, ND, and SD.

Source: U.S. BLS, Employer Costs for Employee Compensation.

Over-the-year changes in wages and salaries

12-month percent changes in ECI



Source: U.S. BLS, Employment Cost Index.