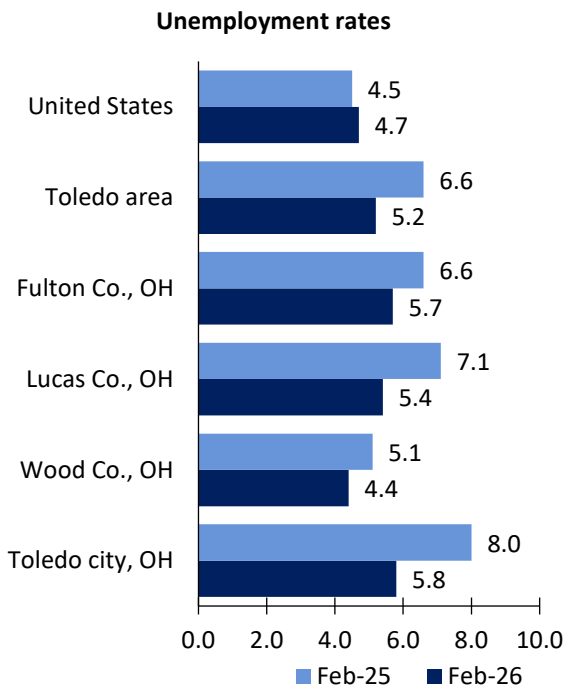


Toledo Area Economic Summary

Updated May 04, 2026

This summary presents a sampling of economic information for the area; supplemental data are provided for regions and the nation. Subjects include **unemployment, employment, wages, prices, spending, and benefits**. All data are not seasonally adjusted and some may be subject to revision. Area definitions may differ by subject. For more area summaries and geographic definitions, see <https://www.bls.gov/regions/economic-summaries.htm>.

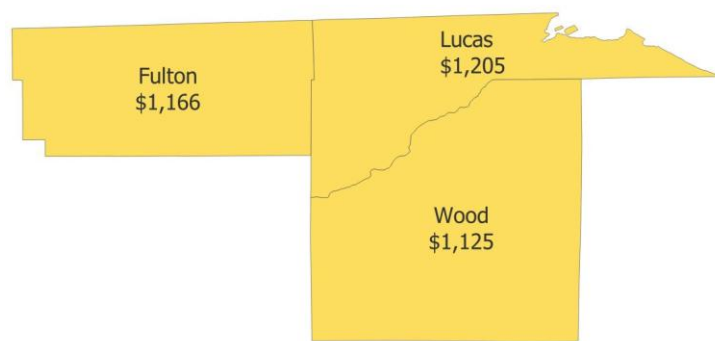
Unemployment rates for the nation and selected areas



Source: U.S. BLS, Local Area Unemployment Statistics.

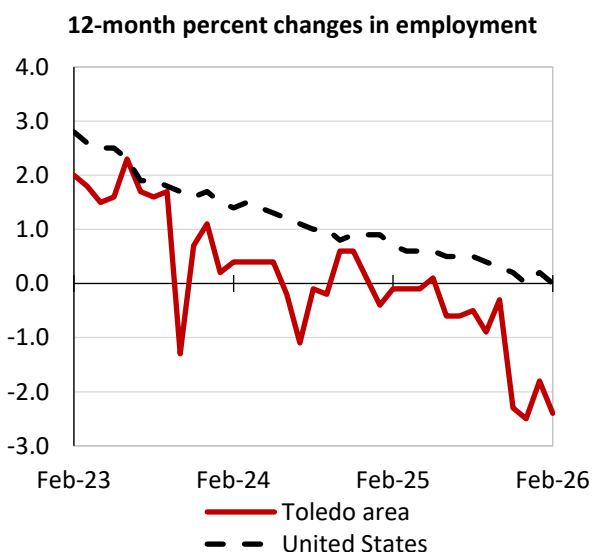
Average weekly wages for all industries by county

Toledo area, third quarter 2025
(U.S. = \$1,459; Area = \$1,182)



Source: U.S. BLS, Quarterly Census of Employment and Wages.

Employment on nonfarm payrolls and employment by major industry sector, over-the-year changes



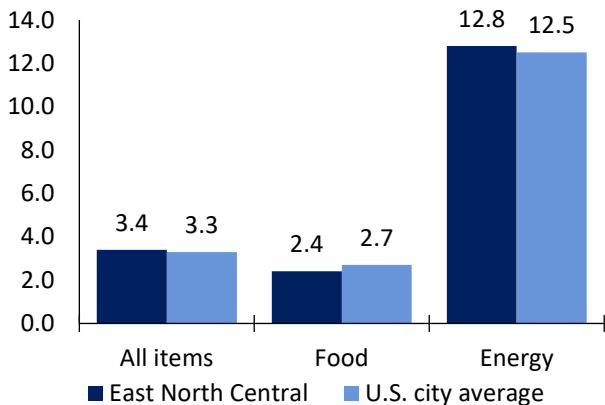
Toledo area employment (number in thousands)	Feb. 2026	Change from Feb. 2025 to Feb. 2026	
		Number	Percent
Total nonfarm	295.6	-7.2	-2.4
Mining, logging, and construction	14.3	0.6	4.4
Manufacturing	41.6	-1.2	-2.8
Trade, transportation, and utilities	57.6	-2.0	-3.4
Information	2.7	-0.4	-12.9
Financial activities	11.1	0.1	0.9
Professional and business services	28.1	-2.9	-9.4
Education and health services	53.1	0.3	0.6
Leisure and hospitality	30.9	-0.5	-1.6
Other services	11.4	-0.7	-5.8
Government	44.8	-0.5	-1.1

Source: U.S. BLS, Current Employment Statistics.



Prices paid by urban consumers for selected categories, over-the-year change

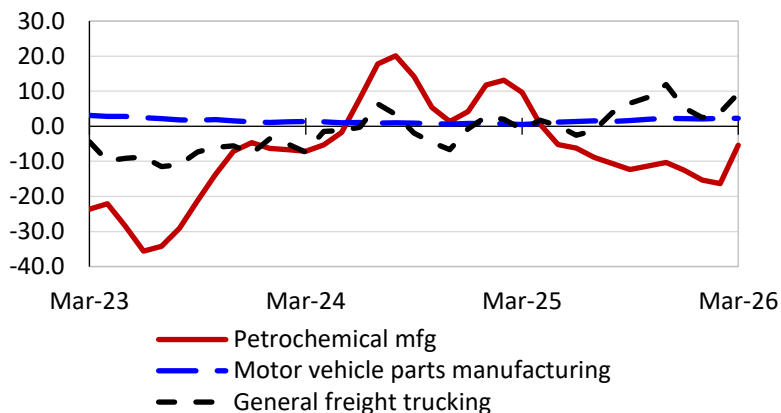
12-month percent change in CPI-U, March 2026



Source: U.S. BLS, Consumer Price Index.

Selling prices received by producers for selected industries nationwide, over-the-year change

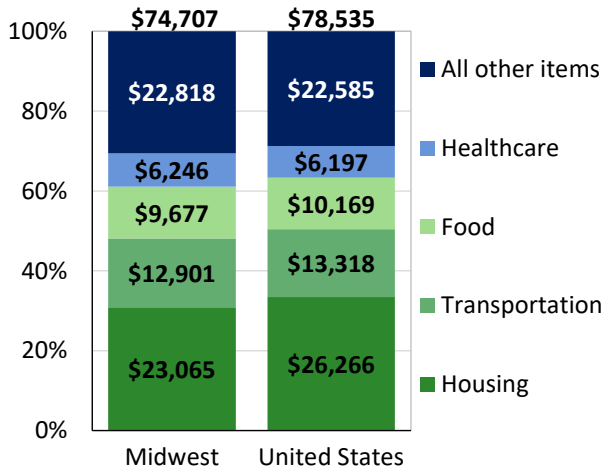
12-month percent changes in PPI



Source: U.S. BLS, Producer Price Index.

Average annual spending and percent distribution for selected categories

Average annual expenditures, 2024



Source: U.S. BLS, Consumer Expenditure Survey.

Average hourly wages for selected occupations, May 2024

Occupation	Toledo area	United States
All occupations	\$28.65	\$32.66
Construction managers	51.34	57.53
Registered nurses	40.13	47.32
Industrial machinery mechanics	31.65	32.29
Miscellaneous assemblers and fabricators	25.67	21.57
Industrial truck and tractor operators	22.99	23.00
Cooks, institution and cafeteria	17.11	17.94

Source: U.S. BLS, Occupational Employment and Wage Statistics.

Employer costs per hour worked for wages and selected employee benefits by census division

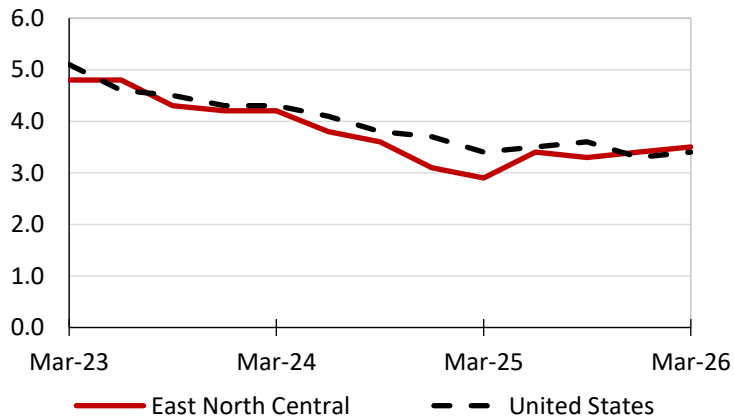
Private industry, December 2025	East North Central	United States
Total compensation	\$43.00	\$46.15
Wages and salaries	29.71	32.36
Total benefits	13.30	13.79
Paid leave	3.08	3.52
Vacation	1.54	1.75
Supplemental pay	2.04	1.87
Insurance	3.50	3.51
Retirement and savings	1.58	1.55
Legally required benefits	3.11	3.34

Map of Census Regions and Divisions

Source: U.S. BLS, Employer Costs for Employee Compensation.

Changes in wages and salaries over-the-year

12-month percent changes in ECI



Source: U.S. BLS, Employment Cost Index.