



**For Release: Thursday, June 18, 2015**

**15-1195-KAN**

MOUNTAIN-PLAINS INFORMATION OFFICE: Kansas City, Mo.

Technical information: (816) 285-7000 BLSInfoKansasCity@bls.gov www.bls.gov/regions/mountain-plains

Media contact: (816) 285-7000

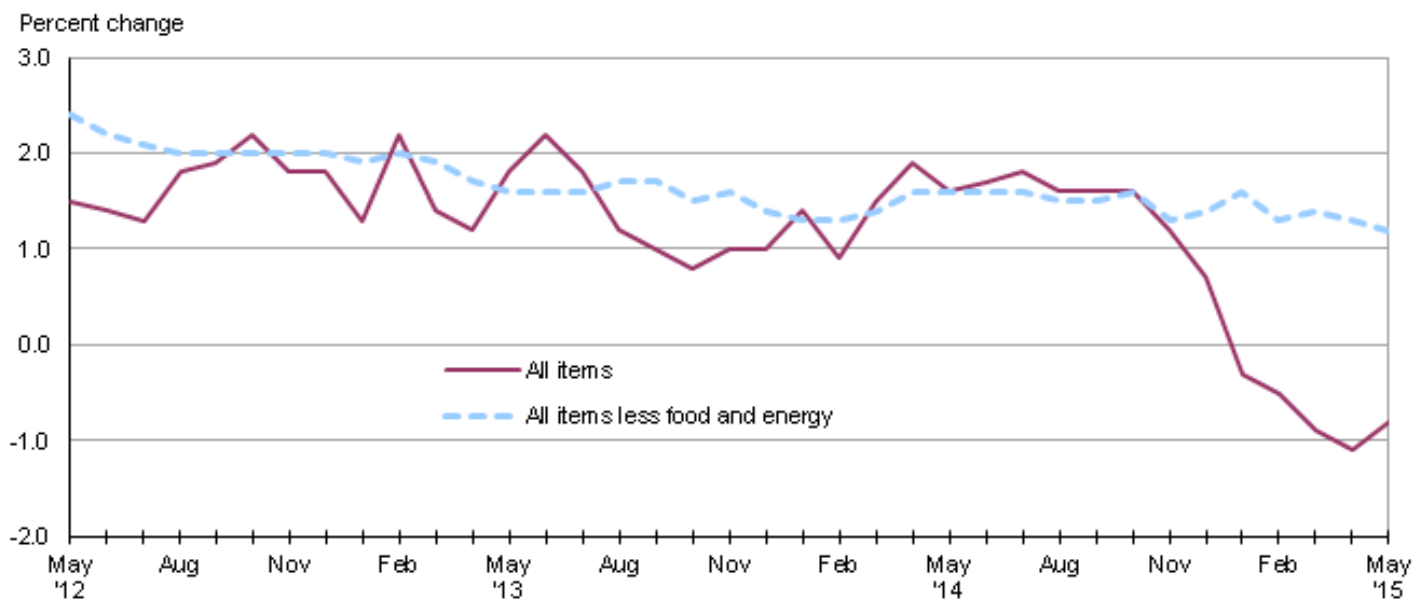
## **Consumer Price Index, Midwest Region – May 2015**

### **Prices in the Midwest up 0.4 percent in May but 0.8 percent lower over the year**

The Consumer Price Index for All Urban Consumers (CPI-U) in the Midwest rose 0.4 percent in May, the U.S. Bureau of Labor Statistics reported today. The monthly increase was led by higher prices for motor fuel. Overall, energy costs advanced 4.3 percent over the month. The indexes for food (-0.1 percent) and all items less food and energy (0.1 percent) registered little movement over the month.

The CPI-U for the Midwest declined 0.8 percent from May 2014 to May 2015. Food prices increased 1.2 percent and the energy index, which includes motor fuel and household fuels, fell 18.7 percent. Excluding food and energy, the CPI-U rose 1.2 percent over the year. (See [chart 1](#).)

**Chart 1. Over-the-year percent change in CPI-U, Midwest region, May 2012–May 2015**



Source: U.S. Bureau of Labor Statistics.

### **Food**

Food prices in the Midwest were little changed (-0.1 percent) in May. The index for food at home was down 0.2 percent while costs for food away from home registered little movement (0.1 percent).

From May 2014 to May 2015, the index for food was up 1.2 percent led by a 3.1-percent rise in costs for food away from home. Prices for food at home were virtually unchanged over the year (0.1 percent).

## Energy

The energy index for the Midwest advanced 4.3 percent in May following a 1.1-percent decline in the previous month. The rise was largely attributable to an 8.5-percent jump in motor fuel prices. Costs for electricity rose 1.4 percent while prices for utility (piped) gas service were 1.8 percent lower over the month.

Despite the monthly increase, the index for energy fell 18.7 percent from May 2014 to May 2015, led by a 27.8-percent drop in motor fuel prices. Costs for utility (piped) gas service were 25.0 percent lower over the year, while electricity prices advanced 4.4 percent.

## All items less food and energy

The index for all items less food and energy for the Midwest registered little movement (0.1 percent) in May due to offsetting movements. Expenditure categories registering higher prices over the month included shelter (0.2 percent) and used cars and trucks (0.7 percent). In contrast, apparel (-0.9 percent) and education and communication (-0.3 percent) were among the expenditure categories posting lower prices over the month.

The index for all items less food and energy increased 1.2 percent from May 2014 to May 2015. Higher costs for shelter (2.2 percent) and medical care (2.7 percent) led the advance.

The Midwest Consumer Price Index for All Urban Consumers (CPI-U) stood at 224.732 in May 2015. A typical market basket of goods and services that cost \$100.00 in the 1982-84 base period cost \$224.73 in May 2015. Because regional CPI data are not adjusted for seasonal price variation, consumers and businesses should be cautious in drawing conclusions about long-term retail price trends from short-term changes in the regional indexes.

## CPI-W

In May, the Midwest Consumer Price Index for Urban Wage Earners and Clerical Workers (CPI-W) was 219.773, up 0.5 percent over the month. The CPI-W decreased 1.4 percent over the year.

**Table A. Midwest region CPI-U 1-month and 12-month percent changes, all items index, not seasonally adjusted**

Month	2011		2012		2013		2014		2015	
	1-month	12-month	1-month	12-month	1-month	12-month	1-month	12-month	1-month	12-month
January.....	0.5	1.9	0.6	2.8	0.1	1.3	0.5	1.4	-0.6	-0.3
February.....	0.3	2.2	0.2	2.7	1.1	2.2	0.6	0.9	0.3	-0.5
March.....	0.9	2.7	1.0	2.8	0.2	1.4	0.9	1.5	0.6	-0.9
April.....	0.7	3.3	0.2	2.3	-0.1	1.2	0.3	1.9	0.1	-1.1
May.....	0.6	3.8	-0.1	1.5	0.5	1.8	0.2	1.6	0.4	-0.8
June.....	0.0	3.9	-0.1	1.4	0.3	2.2	0.5	1.7		
July.....	0.1	3.8	0.0	1.3	-0.4	1.8	-0.3	1.8		
August.....	0.2	3.8	0.7	1.8	0.1	1.2	-0.2	1.6		
September.....	0.2	3.9	0.3	1.9	0.1	1.0	0.1	1.6		
October.....	-0.6	3.3	-0.3	2.2	-0.5	0.8	-0.5	1.6		
November.....	0.0	3.3	-0.4	1.8	-0.2	1.0	-0.6	1.2		
December.....	-0.2	2.8	-0.2	1.8	-0.2	1.0	-0.7	0.7		

**The June 2015 Consumer Price Index for the Midwest region is scheduled to be released on Friday, July 17, 2015.**

## Technical Note

The Consumer Price Index (CPI) is a measure of the average change in prices over time in a fixed market basket of goods and services. The Bureau of Labor Statistics publishes CPIs for two population groups: (1) a CPI for All Urban Consumers (CPI-U) which covers approximately 89 percent of the total population and (2) a CPI for Urban Wage Earners and Clerical Workers (CPI-W) which covers approximately 28 percent of the total population. The CPI-U includes, in addition to wage earners and clerical workers, groups such as professional, managerial, and technical workers, the self-employed, short-term workers, the unemployed, and retirees and others not in the labor force.

The CPI is based on prices of food, clothing, shelter, and fuels, transportation fares, charges for doctors' and dentists' services, drugs, and the other goods and services that people buy for day-to-day living. Each month, prices are collected in 87 urban areas across the country from about 6,000 housing units and approximately 24,000 retail establishments--department stores, supermarkets, hospitals, filling stations, and other types of stores and service establishments. All taxes directly associated with the purchase and use of items are included in the index.

The index measures price changes from a designated reference date (1982-84) that equals 100.0. An increase of 16.5 percent, for example, is shown as 116.5. This change can also be expressed in dollars as follows: the price of a base period "market basket" of goods and services in the CPI has risen from \$10 in 1982-84 to \$11.65. For further details see the CPI home page on the Internet at [www.bls.gov/cpi](http://www.bls.gov/cpi) and the BLS Handbook of Methods, Chapter 17, The Consumer Price Index, available on the Internet at [www.bls.gov/opub/hom/homch17\\_a.htm](http://www.bls.gov/opub/hom/homch17_a.htm).

In calculating the index, price changes for the various items in each location are averaged together with weights that represent their importance in the spending of the appropriate population group. Local data are then combined to obtain a U.S. city average. Because the sample size of a local area is smaller, the local area index is subject to substantially more sampling and other measurement error than the national index. In addition, local indexes are not adjusted for seasonal influences. As a result, local area indexes show greater volatility than the national index, although their long-term trends are quite similar. **NOTE: Area indexes do not measure differences in the level of prices between areas; they only measure the average change in prices for each area since the base period.**

The Midwest region is comprised of Illinois, Indiana, Iowa, Kansas, Michigan, Minnesota, Missouri, Nebraska, North Dakota, Ohio, South Dakota, and Wisconsin.

Information in this release will be made available to sensory impaired individuals upon request. Voice phone: 202-691-5200; Federal Relay Service: 1-800-877-8339

**Table 1. Consumer Price Index for All Urban Consumers (CPI-U): Indexes and percent changes for selected periods Midwest (1982-84=100 unless otherwise noted)**

Item and Group	Indexes			Percent change from-		
	Mar. 2015	Apr. 2015	May 2015	May 2014	Mar. 2015	Apr. 2015
<b>Expenditure category</b>						
All Items.....	223.550	223.797	224.732	-0.8	0.5	0.4
All items (December 1977=100).....	363.728	364.130	365.651			
Food and beverages .....	238.426	238.898	238.696	1.2	0.1	-0.1
Food .....	238.005	238.467	238.255	1.2	0.1	-0.1
Food at home .....	229.093	229.209	228.729	0.1	-0.2	-0.2
Food away from home.....	252.839	253.892	254.137	3.1	0.5	0.1
Alcoholic beverages .....	242.094	242.707	242.664	1.3	0.2	0.0
Housing .....	211.611	211.339	211.741	0.9	0.1	0.2
Shelter .....	247.671	247.830	248.321	2.2	0.3	0.2
Rent of primary residence <sup>(1)</sup> .....	245.907	246.118	246.387	2.8	0.2	0.1
Owners' equiv. rent of residences <sup>(1) (2)</sup> .....	251.079	251.318	251.641	1.9	0.2	0.1
Owners' equiv. rent of primary residence <sup>(1) (2)</sup> .....	251.076	251.316	251.641	1.9	0.2	0.1
Fuels and utilities.....	215.017	210.883	211.508	-4.4	-1.6	0.3
Household energy .....	179.444	174.941	175.274	-6.7	-2.3	0.2
Energy services <sup>(1)</sup> .....	185.834	181.324	182.188	-6.1	-2.0	0.5
Electricity <sup>(1)</sup> .....	195.988	196.065	198.864	4.4	1.5	1.4
Utility (piped) gas service <sup>(1)</sup> .....	159.376	146.758	144.084	-25.0	-9.6	-1.8
Household furnishings and operations .....	115.728	116.649	116.649	-0.8	0.8	0.0
Apparel .....	119.180	118.888	117.773	-5.0	-1.2	-0.9
Transportation .....	196.851	197.917	203.114	-8.5	3.2	2.6
Private transportation .....	191.410	192.152	196.924	-8.8	2.9	2.5
New and used motor vehicles <sup>(3)</sup> .....	99.690	100.176	100.403	0.7	0.7	0.2
New vehicles .....	140.770	140.375	140.597	1.4	-0.1	0.2
New cars and trucks <sup>(3) (4)</sup> .....	99.671	99.387	99.493	1.5	-0.2	0.1
New cars <sup>(4)</sup> .....	137.488	137.151	137.163	1.4	-0.2	0.0
Used cars and trucks.....	147.134	150.055	151.090	-1.0	2.7	0.7
Motor fuel .....	216.852	217.847	236.460	-27.8	9.0	8.5
Gasoline (all types).....	215.352	216.441	235.103	-27.8	9.2	8.6
Gasoline, unleaded regular <sup>(4)</sup> .....	211.598	212.664	231.520	-28.3	9.4	8.9
Gasoline, Unleaded midgrade <sup>(4) (5)</sup> .....	244.607	245.031	264.781	-26.5	8.2	8.1
Gasoline, unleaded premium <sup>(4)</sup> .....	224.100	225.736	242.260	-24.9	8.1	7.3
Medical Care .....	448.997	452.309	452.171	2.7	0.7	0.0
Medical care commodities.....	367.210	368.360	368.131	4.5	0.3	-0.1
Medical care services.....	476.141	480.267	480.167	2.2	0.8	0.0
Professional services .....	387.102	392.309	392.239	1.5	1.3	0.0
Recreation <sup>(3)</sup> .....	117.834	117.673	117.763	-0.2	-0.1	0.1
Education and communication <sup>(3)</sup> .....	139.817	139.798	139.344	-0.2	-0.3	-0.3
Other goods and services .....	399.511	399.240	400.002	1.3	0.1	0.2
<b>Commodity and Service Group</b>						
All Items.....	223.550	223.797	224.732	-0.8	0.5	0.4
Commodities .....	178.233	178.592	179.851	-4.0	0.9	0.7
Commodities less food & beverages.....	148.832	149.135	150.980	-7.3	1.4	1.2
Nondurables less food & beverages .....	190.312	190.305	194.055	-11.0	2.0	2.0
Nondurables less food, beverages, and apparel .....	236.976	237.153	244.031	-12.8	3.0	2.9
Durables .....	107.504	108.064	108.192	-0.7	0.6	0.1
Services.....	270.445	270.585	271.206	1.4	0.3	0.2
Rent of shelter <sup>(2)</sup> .....	254.351	254.489	255.013	2.2	0.3	0.2

Note: See footnotes at end of table.

**Table 1. Consumer Price Index for All Urban Consumers (CPI-U): Indexes and percent changes for selected periods Midwest (1982-84=100 unless otherwise noted) - Continued**

Item and Group	Indexes			Percent change from-		
	Mar. 2015	Apr. 2015	May 2015	May 2014	Mar. 2015	Apr. 2015
Transportation services .....	291.422	293.419	295.699	2.5	1.5	0.8
Other services .....	326.611	326.858	327.143	1.1	0.2	0.1
<b>Special aggregate indexes:</b>						
All items less medical care .....	212.880	212.982	213.968	-1.1	0.5	0.5
All items less food .....	221.101	221.313	222.434	-1.2	0.6	0.5
All items less shelter .....	217.124	217.407	218.520	-2.0	0.6	0.5
Commodities less food .....	151.812	152.124	153.930	-6.9	1.4	1.2
Nondurables .....	214.134	214.354	216.255	-5.0	1.0	0.9
Nondurables less food .....	193.099	193.124	196.681	-10.4	1.9	1.8
Nondurables less food and apparel .....	236.166	236.376	242.658	-11.8	2.7	2.7
Services less rent of shelter <sup>(2)</sup> .....	303.812	303.960	304.728	0.7	0.3	0.3
Services less medical care services .....	255.078	254.939	255.609	1.3	0.2	0.3
Energy .....	196.429	194.290	202.549	-18.7	3.1	4.3
All items less energy .....	228.883	229.381	229.565	1.2	0.3	0.1
All items less food and energy .....	227.923	228.429	228.689	1.2	0.3	0.1
Commodities less food and energy commodities .....	146.607	146.893	146.660	-0.9	0.0	-0.2
Energy commodities .....	217.372	217.927	235.229	-27.6	8.2	7.9
Services less energy services .....	281.406	282.057	282.656	2.0	0.4	0.2

**Footnotes**

(1) This index series was calculated using a Laspeyres estimator. All other item stratum index series were calculated using a geometric means estimator.

(2) Index is on a December 1982=100 base.

(3) Indexes on a December 1997=100 base.

(4) Special index based on a substantially smaller sample.

(5) Indexes on a December 1993=100 base.

Regions defined as the four Census regions. Midwest includes Illinois, Indiana, Iowa, Kansas, Michigan, Minnesota, Missouri, Nebraska, North Dakota, Ohio, South Dakota, and Wisconsin.

NOTE: Index applies to a month as a whole, not to any specific date. Data not seasonally adjusted.

**Table 2. Consumer Price Index for Urban Wage Earners and Clerical Workers (CPI-W): Indexes and percent changes for selected periods Midwest (1982-84=100 unless otherwise noted)**

Item and Group	Indexes			Percent change from-		
	Mar. 2015	Apr. 2015	May 2015	May 2014	Mar. 2015	Apr. 2015
<b>Expenditure category</b>						
All Items.....	218.486	218.701	219.773	-1.4	0.6	0.5
All items (December 1977=100).....	353.341	353.688	355.421			
Food and beverages .....	238.850	239.278	239.044	1.3	0.1	-0.1
Food .....	238.516	238.920	238.668	1.2	0.1	-0.1
Food at home .....	230.019	230.075	229.522	0.1	-0.2	-0.2
Food away from home.....	253.897	254.974	255.309	3.2	0.6	0.1
Alcoholic beverages .....	242.526	243.345	243.407	1.5	0.4	0.0
Housing .....	206.814	206.454	206.881	0.9	0.0	0.2
Shelter .....	237.080	237.230	237.663	2.3	0.2	0.2
Rent of primary residence <sup>(1)</sup> .....	246.588	246.793	247.057	2.8	0.2	0.1
Owners' equiv. rent of residences <sup>(1) (2)</sup> .....	234.095	234.327	234.637	2.0	0.2	0.1
Owners' equiv. rent of primary residence <sup>(1) (2)</sup> .....	234.105	234.338	234.649	2.0	0.2	0.1
Fuels and utilities.....	215.945	211.898	212.672	-4.2	-1.5	0.4
Household energy .....	180.066	175.677	176.167	-6.4	-2.2	0.3
Energy services <sup>(1)</sup> .....	185.035	180.687	181.709	-5.9	-1.8	0.6
Electricity <sup>(1)</sup> .....	194.621	194.694	197.543	4.3	1.5	1.5
Utility (piped) gas service <sup>(1)</sup> .....	160.335	147.365	144.736	-25.5	-9.7	-1.8
Household furnishings and operations .....	114.123	115.025	115.186	-1.0	0.9	0.1
Apparel .....	117.486	117.348	116.474	-4.3	-0.9	-0.7
Transportation .....	194.755	195.874	201.473	-9.9	3.4	2.9
Private transportation .....	191.345	192.325	197.694	-10.0	3.3	2.8
New and used motor vehicles <sup>(3)</sup> .....	99.651	100.462	100.821	0.3	1.2	0.4
New vehicles .....	144.103	143.715	143.938	1.3	-0.1	0.2
Used cars and trucks.....	147.769	150.700	151.738	-1.0	2.7	0.7
Motor fuel .....	217.516	218.378	237.073	-27.8	9.0	8.6
Gasoline (all types).....	215.927	216.885	235.619	-27.8	9.1	8.6
Gasoline, unleaded regular <sup>(4)</sup> .....	212.015	212.953	231.882	-28.3	9.4	8.9
Gasoline, unleaded midgrade <sup>(4) (5)</sup> .....	244.428	244.792	264.433	-26.6	8.2	8.0
Gasoline, unleaded premium <sup>(4)</sup> .....	224.112	225.583	242.079	-24.9	8.0	7.3
Medical Care .....	454.386	457.501	457.217	2.6	0.6	-0.1
Medical care commodities.....	361.026	362.113	361.729	4.5	0.2	-0.1
Medical care services.....	482.825	486.704	486.468	2.1	0.8	0.0
Professional services .....	388.588	393.374	393.404	1.4	1.2	0.0
Recreation <sup>(3)</sup> .....	114.502	114.326	114.071	-0.4	-0.4	-0.2
Education and communication <sup>(3)</sup> .....	131.979	131.974	131.413	-0.9	-0.4	-0.4
Other goods and services .....	442.505	441.953	442.822	1.1	0.1	0.2
<b>Commodity and Service Group</b>						
All Items.....	218.486	218.701	219.773	-1.4	0.6	0.5
Commodities .....	180.817	181.249	182.877	-4.6	1.1	0.9
Commodities less food & beverages.....	152.648	153.076	155.496	-8.2	1.9	1.6
Nondurables less food & beverages .....	197.626	197.646	202.503	-12.4	2.5	2.5
Nondurables less food, beverages, and apparel .....	247.230	247.342	255.616	-14.3	3.4	3.3
Durables .....	109.577	110.339	110.605	-0.7	0.9	0.2
Services.....	263.337	263.307	263.757	1.3	0.2	0.2
Rent of shelter <sup>(2)</sup> .....	235.417	235.541	235.986	2.3	0.2	0.2
Transportation services .....	290.842	292.184	293.651	3.1	1.0	0.5
Other services .....	303.328	303.588	303.258	0.5	0.0	-0.1

Note: See footnotes at end of table.

**Table 2. Consumer Price Index for Urban Wage Earners and Clerical Workers (CPI-W): Indexes and percent changes for selected periods Midwest (1982-84=100 unless otherwise noted) - Continued**

Item and Group	Indexes			Percent change from-		
	Mar. 2015	Apr. 2015	May 2015	May 2014	Mar. 2015	Apr. 2015
<b>Special aggregate indexes:</b>						
All items less medical care .....	209.428	209.536	210.656	-1.7	0.6	0.5
All items less food .....	214.613	214.793	216.104	-1.9	0.7	0.6
All items less shelter .....	214.229	214.469	215.780	-2.7	0.7	0.6
Commodities less food .....	155.384	155.823	158.191	-7.8	1.8	1.5
Nondurables .....	218.437	218.655	221.060	-5.7	1.2	1.1
Nondurables less food .....	199.875	199.937	204.540	-11.7	2.3	2.3
Nondurables less food and apparel .....	245.184	245.352	252.909	-13.3	3.2	3.1
Services less rent of shelter <sup>(2)</sup> .....	269.402	269.201	269.613	0.4	0.1	0.2
Services less medical care services .....	248.767	248.511	248.998	1.2	0.1	0.2
Energy .....	196.786	194.866	203.848	-19.4	3.6	4.6
All items less energy .....	222.911	223.391	223.494	1.2	0.3	0.0
All items less food and energy .....	219.996	220.493	220.671	1.2	0.3	0.1
Commodities less food and energy commodities .....	149.579	150.022	149.943	-0.8	0.2	-0.1
Energy commodities .....	218.310	218.807	236.439	-27.6	8.3	8.1
Services less energy services .....	273.689	274.227	274.603	2.0	0.3	0.1

**Footnotes**

(1) This index series was calculated using a Laspeyres estimator. All other item stratum index series were calculated using a geometric means estimator.

(2) Index is on a December 1984=100 base.

(3) Indexes on a December 1997=100 base.

(4) Special index based on a substantially smaller sample.

(5) Indexes on a December 1993=100 base.

Regions defined as the four Census regions. Midwest includes Illinois, Indiana, Iowa, Kansas, Michigan, Minnesota, Missouri, Nebraska, North Dakota, Ohio, South Dakota, and Wisconsin.

NOTE: Index applies to a month as a whole, not to any specific date. Data not seasonally adjusted.