



For Release: Friday, July 17, 2015

15-1404-KAN

MOUNTAIN-PLAINS INFORMATION OFFICE: Kansas City, Mo.

Technical information: (816) 285-7000 BLSInfoKansasCity@bls.gov www.bls.gov/regions/mountain-plains

Media contact: (816) 285-7000

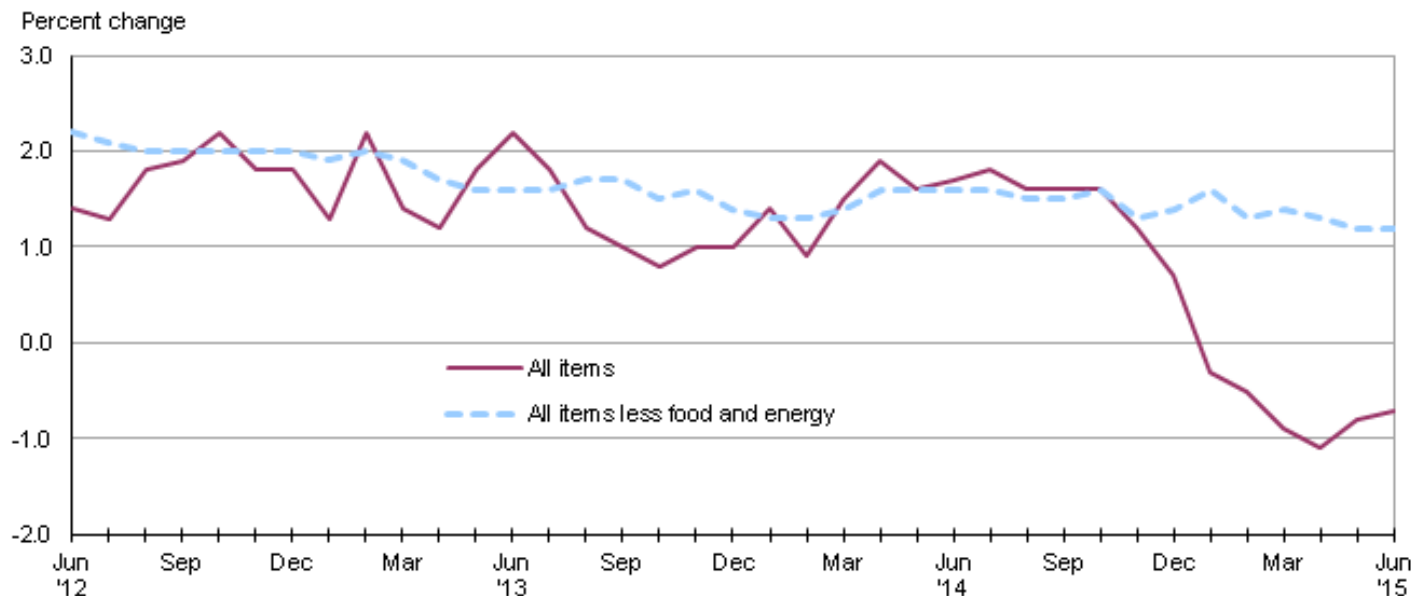
Consumer Price Index, Midwest Region – June 2015

Prices in the Midwest up 0.5 percent in June but 0.7 percent lower over the year

The Consumer Price Index for All Urban Consumers (CPI-U) in the Midwest rose 0.5 percent in June, the U.S. Bureau of Labor Statistics reported today. The monthly increase was largely attributable to higher energy costs. Overall, the energy index advanced 5.9 percent over the month. The index for food (0.1 percent) registered little movement and the all items less food and energy index was unchanged.

The CPI-U for the Midwest declined 0.7 percent from June 2014 to June 2015, the sixth consecutive month of over-the-year decline. Food prices increased 1.3 percent and the energy index, which includes motor fuel and household fuels, fell 17.2 percent. Excluding food and energy, the CPI-U rose 1.2 percent over the year. (See [chart 1.](#))

Chart 1. Over-the-year percent change in CPI-U, Midwest region, June 2012–June 2015



Source: U.S. Bureau of Labor Statistics.

Food

Food prices in the Midwest were little changed (0.1 percent) in June. The index for food at home registered little movement (0.1 percent) while costs for food away from home rose 0.2 percent.

From June 2014 to June 2015, the index for food was up 1.3 percent. Costs for food away from home increased 3.2 percent while prices for food at home were unchanged over the year.

Energy

The energy index for the Midwest advanced 5.9 percent in June following a 4.3-percent increase in the previous month. Higher prices for motor fuel (6.0 percent) and electricity (7.6 percent) led the monthly advance. Electricity prices typically rise in June, reflecting a shift to seasonal rate schedules. Higher costs for utility (piped) gas service (2.6 percent) also contributed to the increase in the energy index.

Despite the monthly increase, the index for energy fell 17.2 percent from June 2014 to June 2015 led by a 25.5-percent drop in motor fuel prices. Costs for utility (piped) gas service were 20.0 percent lower over the year, while electricity prices rose 1.1 percent.

All items less food and energy

The index for all items less food and energy for the Midwest was unchanged in June due to offsetting movements. Expenditure categories registering higher prices over the month included shelter (0.4 percent) and other goods and services (0.3 percent). In contrast, household furnishings and operations (-0.6 percent) and apparel (-0.5 percent) were among the expenditure categories posting lower prices over the month.

The index for all items less food and energy increased 1.2 percent from June 2014 to June 2015. Higher costs for shelter (2.3 percent) and medical care services (2.0 percent) led the advance.

The Midwest Consumer Price Index for All Urban Consumers (CPI-U) stood at 225.946 in June 2015. A typical market basket of goods and services that cost \$100.00 in the 1982-84 base period cost \$225.95 in June 2015. Because regional CPI data are not adjusted for seasonal price variation, consumers and businesses should be cautious in drawing conclusions about long-term retail price trends from short-term changes in the regional indexes.

CPI-W

In June, the Midwest Consumer Price Index for Urban Wage Earners and Clerical Workers (CPI-W) was 221.193, up 0.6 percent over the month. The CPI-W decreased 1.2 percent over the year.

Table A. Midwest region CPI-U 1-month and 12-month percent changes, all items index, not seasonally adjusted

Month	2011		2012		2013		2014		2015	
	1-month	12-month	1-month	12-month	1-month	12-month	1-month	12-month	1-month	12-month
January.....	0.5	1.9	0.6	2.8	0.1	1.3	0.5	1.4	-0.6	-0.3
February.....	0.3	2.2	0.2	2.7	1.1	2.2	0.6	0.9	0.3	-0.5
March.....	0.9	2.7	1.0	2.8	0.2	1.4	0.9	1.5	0.6	-0.9
April.....	0.7	3.3	0.2	2.3	-0.1	1.2	0.3	1.9	0.1	-1.1
May.....	0.6	3.8	-0.1	1.5	0.5	1.8	0.2	1.6	0.4	-0.8
June.....	0.0	3.9	-0.1	1.4	0.3	2.2	0.5	1.7	0.5	-0.7
July.....	0.1	3.8	0.0	1.3	-0.4	1.8	-0.3	1.8		
August.....	0.2	3.8	0.7	1.8	0.1	1.2	-0.2	1.6		
September.....	0.2	3.9	0.3	1.9	0.1	1.0	0.1	1.6		
October.....	-0.6	3.3	-0.3	2.2	-0.5	0.8	-0.5	1.6		
November.....	0.0	3.3	-0.4	1.8	-0.2	1.0	-0.6	1.2		
December.....	-0.2	2.8	-0.2	1.8	-0.2	1.0	-0.7	0.7		

The July 2015 Consumer Price Index for the Midwest region is scheduled to be released on Wednesday, August 19, 2015.

Technical Note

The Consumer Price Index (CPI) is a measure of the average change in prices over time in a fixed market basket of goods and services. The Bureau of Labor Statistics publishes CPIs for two population groups: (1) a CPI for All Urban Consumers (CPI-U) which covers approximately 89 percent of the total population and (2) a CPI for Urban Wage Earners and Clerical Workers (CPI-W) which covers approximately 28 percent of the total population. The CPI-U includes, in addition to wage earners and clerical workers, groups such as professional, managerial, and technical workers, the self-employed, short-term workers, the unemployed, and retirees and others not in the labor force.

The CPI is based on prices of food, clothing, shelter, and fuels, transportation fares, charges for doctors' and dentists' services, drugs, and the other goods and services that people buy for day-to-day living. Each month, prices are collected in 87 urban areas across the country from about 6,000 housing units and approximately 24,000 retail establishments--department stores, supermarkets, hospitals, filling stations, and other types of stores and service establishments. All taxes directly associated with the purchase and use of items are included in the index.

The index measures price changes from a designated reference date (1982-84) that equals 100.0. An increase of 16.5 percent, for example, is shown as 116.5. This change can also be expressed in dollars as follows: the price of a base period "market basket" of goods and services in the CPI has risen from \$10 in 1982-84 to \$11.65. For further details see the CPI home page on the Internet at www.bls.gov/cpi and the BLS Handbook of Methods, Chapter 17, The Consumer Price Index, available on the Internet at www.bls.gov/opub/hom/homch17_a.htm.

In calculating the index, price changes for the various items in each location are averaged together with weights that represent their importance in the spending of the appropriate population group. Local data are then combined to obtain a U.S. city average. Because the sample size of a local area is smaller, the local area index is subject to substantially more sampling and other measurement error than the national index. In addition, local indexes are not adjusted for seasonal influences. As a result, local area indexes show greater volatility than the national index, although their long-term trends are quite similar. **NOTE: Area indexes do not measure differences in the level of prices between areas; they only measure the average change in prices for each area since the base period.**

The Midwest region is comprised of Illinois, Indiana, Iowa, Kansas, Michigan, Minnesota, Missouri, Nebraska, North Dakota, Ohio, South Dakota, and Wisconsin.

Information in this release will be made available to sensory impaired individuals upon request. Voice phone: 202-691-5200; Federal Relay Service: 1-800-877-8339

Table 1. Consumer Price Index for All Urban Consumers (CPI-U): Indexes and percent changes for selected periods Midwest (1982-84=100 unless otherwise noted)

Item and Group	Indexes			Percent change from-		
	Apr. 2015	May 2015	Jun. 2015	Jun. 2014	Apr. 2015	May 2015
Expenditure category						
All Items.....	223.797	224.732	225.946	-0.7	1.0	0.5
All items (December 1977=100).....	364.130	365.651	367.626			
Food and beverages	238.898	238.696	238.920	1.2	0.0	0.1
Food	238.467	238.255	238.608	1.3	0.1	0.1
Food at home	229.209	228.729	229.000	0.0	-0.1	0.1
Food away from home.....	253.892	254.137	254.629	3.2	0.3	0.2
Alcoholic beverages	242.707	242.664	240.891	0.1	-0.7	-0.7
Housing	211.339	211.741	213.493	1.0	1.0	0.8
Shelter	247.830	248.321	249.241	2.3	0.6	0.4
Rent of primary residence ⁽¹⁾	246.118	246.387	247.299	3.0	0.5	0.4
Owners' equiv. rent of residences ^{(1) (2)}	251.318	251.641	252.331	2.1	0.4	0.3
Owners' equiv. rent of primary residence ^{(1) (2)}	251.316	251.641	252.330	2.1	0.4	0.3
Fuels and utilities.....	210.883	211.508	221.159	-4.2	4.9	4.6
Household energy	174.941	175.274	185.200	-6.4	5.9	5.7
Energy services ⁽¹⁾	181.324	182.188	193.394	-5.8	6.7	6.2
Electricity ⁽¹⁾	196.065	198.864	213.888	1.1	9.1	7.6
Utility (piped) gas service ⁽¹⁾	146.758	144.084	147.891	-20.0	0.8	2.6
Household furnishings and operations	116.649	116.649	115.959	-1.4	-0.6	-0.6
Apparel	118.888	117.773	117.176	-4.3	-1.4	-0.5
Transportation	197.917	203.114	206.151	-8.0	4.2	1.5
Private transportation	192.152	196.924	200.113	-8.2	4.1	1.6
New and used motor vehicles ⁽³⁾	100.176	100.403	100.227	0.4	0.1	-0.2
New vehicles	140.375	140.597	140.386	1.5	0.0	-0.2
New cars and trucks ^{(3) (4)}	99.387	99.493	99.344	1.6	0.0	-0.1
New cars ⁽⁴⁾	137.151	137.163	136.802	1.3	-0.3	-0.3
Used cars and trucks.....	150.055	151.090	151.403	-1.2	0.9	0.2
Motor fuel	217.847	236.460	250.761	-25.5	15.1	6.0
Gasoline (all types).....	216.441	235.103	249.457	-25.5	15.3	6.1
Gasoline, unleaded regular ⁽⁴⁾	212.664	231.520	245.828	-26.0	15.6	6.2
Gasoline, Unleaded midgrade ^{(4) (5)}	245.031	264.781	279.299	-24.1	14.0	5.5
Gasoline, unleaded premium ⁽⁴⁾	225.736	242.260	256.392	-22.5	13.6	5.8
Medical Care	452.309	452.171	451.389	2.4	-0.2	-0.2
Medical care commodities.....	368.360	368.131	367.148	4.0	-0.3	-0.3
Medical care services.....	480.267	480.167	479.474	2.0	-0.2	-0.1
Professional services	392.309	392.239	391.390	1.1	-0.2	-0.2
Recreation ⁽³⁾	117.673	117.763	117.747	0.2	0.1	0.0
Education and communication ⁽³⁾	139.798	139.344	139.146	-0.3	-0.5	-0.1
Other goods and services	399.240	400.002	401.123	1.4	0.5	0.3
Commodity and Service Group						
All Items.....	223.797	224.732	225.946	-0.7	1.0	0.5
Commodities	178.592	179.851	180.816	-3.8	1.2	0.5
Commodities less food & beverages.....	149.135	150.980	152.236	-6.8	2.1	0.8
Nondurables less food & beverages	190.305	194.055	197.117	-10.2	3.6	1.6
Nondurables less food, beverages, and apparel	237.153	244.031	249.450	-11.8	5.2	2.2
Durables	108.064	108.192	107.836	-0.9	-0.2	-0.3
Services.....	270.585	271.206	272.677	1.4	0.8	0.5
Rent of shelter ⁽²⁾	254.489	255.013	255.972	2.3	0.6	0.4

Note: See footnotes at end of table.

Table 1. Consumer Price Index for All Urban Consumers (CPI-U): Indexes and percent changes for selected periods Midwest (1982-84=100 unless otherwise noted) - Continued

Item and Group	Indexes			Percent change from-		
	Apr. 2015	May 2015	Jun. 2015	Jun. 2014	Apr. 2015	May 2015
Transportation services	293.419	295.699	294.771	2.1	0.5	-0.3
Other services	326.858	327.143	326.963	0.9	0.0	-0.1
Special aggregate indexes:						
All items less medical care	212.982	213.968	215.276	-1.0	1.1	0.6
All items less food	221.313	222.434	223.788	-1.1	1.1	0.6
All items less shelter	217.407	218.520	219.859	-2.0	1.1	0.6
Commodities less food	152.124	153.930	155.115	-6.6	2.0	0.8
Nondurables	214.354	216.255	217.991	-4.6	1.7	0.8
Nondurables less food	193.124	196.681	199.498	-9.6	3.3	1.4
Nondurables less food and apparel	236.376	242.658	247.464	-11.0	4.7	2.0
Services less rent of shelter ⁽²⁾	303.960	304.728	306.867	0.6	1.0	0.7
Services less medical care services	254.939	255.609	257.225	1.3	0.9	0.6
Energy	194.290	202.549	214.413	-17.2	10.4	5.9
All items less energy	229.381	229.565	229.688	1.2	0.1	0.1
All items less food and energy	228.429	228.689	228.768	1.2	0.1	0.0
Commodities less food and energy commodities	146.893	146.660	146.266	-0.8	-0.4	-0.3
Energy commodities	217.927	235.229	248.381	-25.4	14.0	5.6
Services less energy services	282.057	282.656	283.065	2.0	0.4	0.1

Footnotes

(1) This index series was calculated using a Laspeyres estimator. All other item stratum index series were calculated using a geometric means estimator.

(2) Index is on a December 1982=100 base.

(3) Indexes on a December 1997=100 base.

(4) Special index based on a substantially smaller sample.

(5) Indexes on a December 1993=100 base.

Regions defined as the four Census regions. Midwest includes Illinois, Indiana, Iowa, Kansas, Michigan, Minnesota, Missouri, Nebraska, North Dakota, Ohio, South Dakota, and Wisconsin.

NOTE: Index applies to a month as a whole, not to any specific date. Data not seasonally adjusted.

Table 2. Consumer Price Index for Urban Wage Earners and Clerical Workers (CPI-W): Indexes and percent changes for selected periods Midwest (1982-84=100 unless otherwise noted)

Item and Group	Indexes			Percent change from-		
	Apr. 2015	May 2015	Jun. 2015	Jun. 2014	Apr. 2015	May 2015
Expenditure category						
All Items.....	218.701	219.773	221.193	-1.2	1.1	0.6
All items (December 1977=100).....	353.688	355.421	357.718			
Food and beverages	239.278	239.044	239.366	1.3	0.0	0.1
Food	238.920	238.668	239.125	1.3	0.1	0.2
Food at home	230.075	229.522	230.019	0.2	0.0	0.2
Food away from home.....	254.974	255.309	255.686	3.4	0.3	0.1
Alcoholic beverages	243.345	243.407	241.571	0.4	-0.7	-0.8
Housing	206.454	206.881	208.744	0.9	1.1	0.9
Shelter	237.230	237.663	238.455	2.4	0.5	0.3
Rent of primary residence ⁽¹⁾	246.793	247.057	247.934	3.0	0.5	0.4
Owners' equiv. rent of residences ^{(1) (2)}	234.327	234.637	235.262	2.1	0.4	0.3
Owners' equiv. rent of primary residence ^{(1) (2)}	234.338	234.649	235.272	2.1	0.4	0.3
Fuels and utilities.....	211.898	212.672	222.303	-4.0	4.9	4.5
Household energy	175.677	176.167	185.988	-6.1	5.9	5.6
Energy services ⁽¹⁾	180.687	181.709	192.680	-5.6	6.6	6.0
Electricity ⁽¹⁾	194.694	197.543	211.880	1.0	8.8	7.3
Utility (piped) gas service ⁽¹⁾	147.365	144.736	148.703	-20.3	0.9	2.7
Household furnishings and operations	115.025	115.186	114.552	-1.5	-0.4	-0.6
Apparel	117.348	116.474	115.795	-3.7	-1.3	-0.6
Transportation	195.874	201.473	205.074	-9.2	4.7	1.8
Private transportation	192.325	197.694	201.396	-9.3	4.7	1.9
New and used motor vehicles ⁽³⁾	100.462	100.821	100.765	0.1	0.3	-0.1
New vehicles	143.715	143.938	143.681	1.4	0.0	-0.2
Used cars and trucks.....	150.700	151.738	152.053	-1.2	0.9	0.2
Motor fuel	218.378	237.073	251.400	-25.5	15.1	6.0
Gasoline (all types).....	216.885	235.619	249.981	-25.5	15.3	6.1
Gasoline, unleaded regular ⁽⁴⁾	212.953	231.882	246.177	-26.0	15.6	6.2
Gasoline, unleaded midgrade ^{(4) (5)}	244.792	264.433	278.998	-24.2	14.0	5.5
Gasoline, unleaded premium ⁽⁴⁾	225.583	242.079	256.222	-22.5	13.6	5.8
Medical Care	457.501	457.217	456.576	2.4	-0.2	-0.1
Medical care commodities.....	362.113	361.729	361.090	4.1	-0.3	-0.2
Medical care services.....	486.704	486.468	485.839	1.9	-0.2	-0.1
Professional services	393.374	393.404	392.764	1.1	-0.2	-0.2
Recreation ⁽³⁾	114.326	114.071	113.930	-0.1	-0.3	-0.1
Education and communication ⁽³⁾	131.974	131.413	131.196	-1.0	-0.6	-0.2
Other goods and services	441.953	442.822	444.842	1.3	0.7	0.5
Commodity and Service Group						
All Items.....	218.701	219.773	221.193	-1.2	1.1	0.6
Commodities	181.249	182.877	184.171	-4.3	1.6	0.7
Commodities less food & beverages.....	153.076	155.496	157.197	-7.6	2.7	1.1
Nondurables less food & beverages	197.646	202.503	206.411	-11.5	4.4	1.9
Nondurables less food, beverages, and apparel	247.342	255.616	262.262	-13.3	6.0	2.6
Durables	110.339	110.605	110.370	-0.8	0.0	-0.2
Services.....	263.307	263.757	265.334	1.3	0.8	0.6
Rent of shelter ⁽²⁾	235.541	235.986	236.785	2.4	0.5	0.3
Transportation services	292.184	293.651	292.842	2.9	0.2	-0.3
Other services	303.588	303.258	302.888	0.3	-0.2	-0.1

Note: See footnotes at end of table.

Table 2. Consumer Price Index for Urban Wage Earners and Clerical Workers (CPI-W): Indexes and percent changes for selected periods Midwest (1982-84=100 unless otherwise noted) - Continued

Item and Group	Indexes			Percent change from-		
	Apr. 2015	May 2015	Jun. 2015	Jun. 2014	Apr. 2015	May 2015
Special aggregate indexes:						
All items less medical care	209.536	210.656	212.149	-1.5	1.2	0.7
All items less food	214.793	216.104	217.697	-1.7	1.4	0.7
All items less shelter	214.469	215.780	217.439	-2.6	1.4	0.8
Commodities less food	155.823	158.191	159.808	-7.4	2.6	1.0
Nondurables	218.655	221.060	223.243	-5.3	2.1	1.0
Nondurables less food	199.937	204.540	208.147	-10.8	4.1	1.8
Nondurables less food and apparel	245.352	252.909	258.826	-12.4	5.5	2.3
Services less rent of shelter ⁽²⁾	269.201	269.613	271.914	0.3	1.0	0.9
Services less medical care services	248.511	248.998	250.691	1.3	0.9	0.7
Energy	194.866	203.848	215.731	-17.8	10.7	5.8
All items less energy	223.391	223.494	223.633	1.2	0.1	0.1
All items less food and energy	220.493	220.671	220.743	1.2	0.1	0.0
Commodities less food and energy commodities	150.022	149.943	149.666	-0.8	-0.2	-0.2
Energy commodities	218.807	236.439	249.830	-25.4	14.2	5.7
Services less energy services	274.227	274.603	274.943	2.0	0.3	0.1

Footnotes

(1) This index series was calculated using a Laspeyres estimator. All other item stratum index series were calculated using a geometric means estimator.

(2) Index is on a December 1984=100 base.

(3) Indexes on a December 1997=100 base.

(4) Special index based on a substantially smaller sample.

(5) Indexes on a December 1993=100 base.

Regions defined as the four Census regions. Midwest includes Illinois, Indiana, Iowa, Kansas, Michigan, Minnesota, Missouri, Nebraska, North Dakota, Ohio, South Dakota, and Wisconsin.

NOTE: Index applies to a month as a whole, not to any specific date. Data not seasonally adjusted.