



For Release: Wednesday, August 19, 2015

15-1594-KAN

MOUNTAIN-PLAINS INFORMATION OFFICE: Kansas City, Mo.

Technical information: (816) 285-7000 BLSInfoKansasCity@bls.gov www.bls.gov/regions/mountain-plains

Media contact: (816) 285-7000

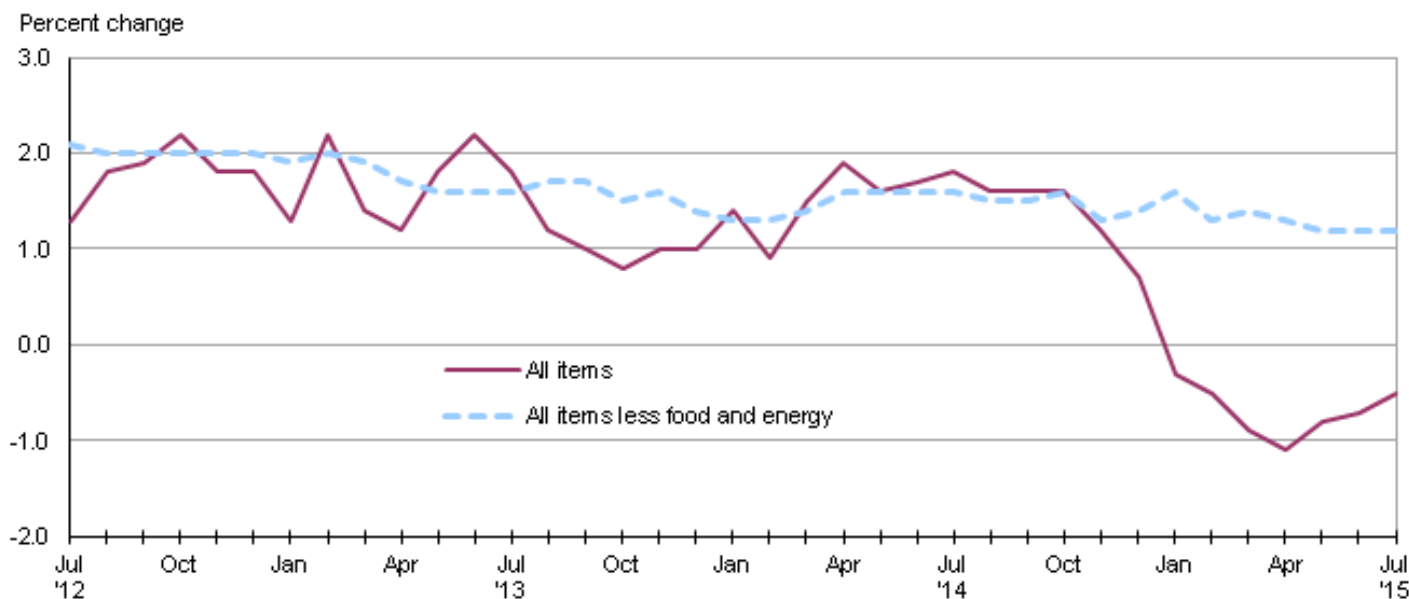
Consumer Price Index, Midwest Region – July 2015

Prices in the Midwest unchanged in July but 0.5 percent lower over the year

The Consumer Price Index for All Urban Consumers (CPI-U) in the Midwest was unchanged in July, the U.S. Bureau of Labor Statistics reported today. Energy costs were 0.7 percent lower, food prices rose 0.3 percent, and the index for all items less food and energy was unchanged.

The CPI-U for the Midwest declined 0.5 percent from July 2014 to July 2015, the seventh consecutive month of over-the-year decline. Food prices increased 1.4 percent and the energy index, which includes motor fuel and household fuels, fell 15.6 percent. Excluding food and energy, the CPI-U rose 1.2 percent over the year. (See [chart 1.](#))

Chart 1. Over-the-year percent change in CPI-U, Midwest region, July 2012–July 2015



Source: U.S. Bureau of Labor Statistics.

Food

Food prices in the Midwest rose 0.3 percent in July. Higher costs for food at home (0.4 percent) were largely responsible for the monthly advance, while prices for food away from home were little changed (0.1 percent).

From July 2014 to July 2015, the index for food was up 1.4 percent led by a 3.2-percent rise in costs for food away from home. Prices for food at home contributed to the increase with a gain of 0.3 percent. The 12-month percent change in the food index has remained below 2.0 percent since March 2015.

Energy

The energy index for the Midwest turned down 0.7 percent in July following increases of 4.3 and 5.9 percent, respectively, in May and June. The monthly decrease in energy costs was largely attributable to a 1.7-percent decline in motor fuel prices. Costs for utility (piped) gas service were 0.3 percent lower, but prices for electricity were up 0.8 percent over the month.

The index for energy fell 15.6 percent from July 2014 to July 2015, led by a drop of 23.0 percent in motor fuel prices. Costs for utility (piped) gas service were 20.8 percent lower over the year, while electricity prices rose 1.5 percent.

All items less food and energy

The index for all items less food and energy for the Midwest was unchanged in July due to offsetting movements. Expenditure categories registering higher prices over the month included shelter (0.2 percent) and household furnishings and operations (0.2 percent). In contrast, apparel (-1.6 percent) and new vehicles (-0.8 percent) were among the expenditure categories posting lower prices over the month.

The index for all items less food and energy increased 1.2 percent from July 2014 to July 2015. Higher costs for shelter (2.3 percent) and medical care services (1.9 percent) led the advance.

The Midwest Consumer Price Index for All Urban Consumers (CPI-U) stood at 225.853 in July 2015. A typical market basket of goods and services that cost \$100.00 in the 1982-84 base period cost \$225.85 in July 2015. Because regional CPI data are not adjusted for seasonal price variation, consumers and businesses should be cautious in drawing conclusions about long-term retail price trends from short-term changes in the regional indexes.

CPI-W

In July, the Midwest Consumer Price Index for Urban Wage Earners and Clerical Workers (CPI-W) was 221.136, unchanged over the month. The CPI-W decreased 0.9 percent over the year.

Table A. Midwest region CPI-U 1-month and 12-month percent changes, all items index, not seasonally adjusted

Month	2011		2012		2013		2014		2015	
	1-month	12-month	1-month	12-month	1-month	12-month	1-month	12-month	1-month	12-month
January.....	0.5	1.9	0.6	2.8	0.1	1.3	0.5	1.4	-0.6	-0.3
February.....	0.3	2.2	0.2	2.7	1.1	2.2	0.6	0.9	0.3	-0.5
March.....	0.9	2.7	1.0	2.8	0.2	1.4	0.9	1.5	0.6	-0.9
April.....	0.7	3.3	0.2	2.3	-0.1	1.2	0.3	1.9	0.1	-1.1
May.....	0.6	3.8	-0.1	1.5	0.5	1.8	0.2	1.6	0.4	-0.8
June.....	0.0	3.9	-0.1	1.4	0.3	2.2	0.5	1.7	0.5	-0.7
July.....	0.1	3.8	0.0	1.3	-0.4	1.8	-0.3	1.8	0.0	-0.5
August.....	0.2	3.8	0.7	1.8	0.1	1.2	-0.2	1.6		
September.....	0.2	3.9	0.3	1.9	0.1	1.0	0.1	1.6		
October.....	-0.6	3.3	-0.3	2.2	-0.5	0.8	-0.5	1.6		
November.....	0.0	3.3	-0.4	1.8	-0.2	1.0	-0.6	1.2		
December.....	-0.2	2.8	-0.2	1.8	-0.2	1.0	-0.7	0.7		

The August 2015 Consumer Price Index for the Midwest region is scheduled to be released on Wednesday, September 16, 2015.

Technical Note

The Consumer Price Index (CPI) is a measure of the average change in prices over time in a fixed market basket of goods and services. The Bureau of Labor Statistics publishes CPIs for two population groups: (1) a CPI for All Urban Consumers (CPI-U) which covers approximately 89 percent of the total population and (2) a CPI for Urban Wage Earners and Clerical Workers (CPI-W) which covers approximately 28 percent of the total population. The CPI-U includes, in addition to wage earners and clerical workers, groups such as professional, managerial, and technical workers, the self-employed, short-term workers, the unemployed, and retirees and others not in the labor force.

The CPI is based on prices of food, clothing, shelter, and fuels, transportation fares, charges for doctors' and dentists' services, drugs, and the other goods and services that people buy for day-to-day living. Each month, prices are collected in 87 urban areas across the country from about 6,000 housing units and approximately 24,000 retail establishments--department stores, supermarkets, hospitals, filling stations, and other types of stores and service establishments. All taxes directly associated with the purchase and use of items are included in the index.

The index measures price changes from a designated reference date (1982-84) that equals 100.0. An increase of 16.5 percent, for example, is shown as 116.5. This change can also be expressed in dollars as follows: the price of a base period "market basket" of goods and services in the CPI has risen from \$10 in 1982-84 to \$11.65. For further details see the CPI home page on the Internet at www.bls.gov/cpi and the BLS Handbook of Methods, Chapter 17, The Consumer Price Index, available on the Internet at www.bls.gov/opub/hom/homch17_a.htm.

In calculating the index, price changes for the various items in each location are averaged together with weights that represent their importance in the spending of the appropriate population group. Local data are then combined to obtain a U.S. city average. Because the sample size of a local area is smaller, the local area index is subject to substantially more sampling and other measurement error than the national index. In addition, local indexes are not adjusted for seasonal influences. As a result, local area indexes show greater volatility than the national index, although their long-term trends are quite similar. **NOTE: Area indexes do not measure differences in the level of prices between areas; they only measure the average change in prices for each area since the base period.**

The Midwest region is comprised of Illinois, Indiana, Iowa, Kansas, Michigan, Minnesota, Missouri, Nebraska, North Dakota, Ohio, South Dakota, and Wisconsin.

Information in this release will be made available to sensory impaired individuals upon request. Voice phone: 202-691-5200; Federal Relay Service: 1-800-877-8339

Table 1. Consumer Price Index for All Urban Consumers (CPI-U): Indexes and percent changes for selected periods Midwest (1982-84=100 unless otherwise noted)

Item and Group	Indexes			Percent change from-		
	May 2015	Jun. 2015	Jul. 2015	Jul. 2014	May 2015	Jun. 2015
Expenditure category						
All Items.....	224.732	225.946	225.853	-0.5	0.5	0.0
All items (December 1977=100).....	365.651	367.626	367.476			
Food and beverages	238.696	238.920	239.516	1.4	0.3	0.2
Food	238.255	238.608	239.266	1.4	0.4	0.3
Food at home	228.729	229.000	229.936	0.3	0.5	0.4
Food away from home.....	254.137	254.629	254.811	3.2	0.3	0.1
Alcoholic beverages	242.664	240.891	240.512	0.1	-0.9	-0.2
Housing	211.741	213.493	213.922	1.0	1.0	0.2
Shelter	248.321	249.241	249.676	2.3	0.5	0.2
Rent of primary residence ⁽¹⁾	246.387	247.299	247.740	2.9	0.5	0.2
Owners' equiv. rent of residences ^{(1) (2)}	251.641	252.331	252.685	2.1	0.4	0.1
Owners' equiv. rent of primary residence ^{(1) (2)}	251.641	252.330	252.682	2.1	0.4	0.1
Fuels and utilities.....	211.508	221.159	221.893	-4.3	4.9	0.3
Household energy	175.274	185.200	185.829	-6.5	6.0	0.3
Energy services ⁽¹⁾	182.188	193.394	194.343	-5.8	6.7	0.5
Electricity ⁽¹⁾	198.864	213.888	215.625	1.5	8.4	0.8
Utility (piped) gas service ⁽¹⁾	144.084	147.891	147.374	-20.8	2.3	-0.3
Household furnishings and operations	116.649	115.959	116.212	-0.9	-0.4	0.2
Apparel	117.773	117.176	115.350	-3.5	-2.1	-1.6
Transportation	203.114	206.151	204.646	-7.1	0.8	-0.7
Private transportation	196.924	200.113	199.095	-7.3	1.1	-0.5
New and used motor vehicles ⁽³⁾	100.403	100.227	100.084	-0.3	-0.3	-0.1
New vehicles	140.597	140.386	139.249	0.1	-1.0	-0.8
New cars and trucks ^{(3) (4)}	99.493	99.344	98.631	0.3	-0.9	-0.7
New cars ⁽⁴⁾	137.163	136.802	135.512	0.0	-1.2	-0.9
Used cars and trucks.....	151.090	151.403	151.545	-1.7	0.3	0.1
Motor fuel	236.460	250.761	246.592	-23.0	4.3	-1.7
Gasoline (all types).....	235.103	249.457	245.326	-23.0	4.3	-1.7
Gasoline, unleaded regular ⁽⁴⁾	231.520	245.828	241.386	-23.5	4.3	-1.8
Gasoline, Unleaded midgrade ^{(4) (5)}	264.781	279.299	275.548	-22.3	4.1	-1.3
Gasoline, unleaded premium ⁽⁴⁾	242.260	256.392	254.579	-19.6	5.1	-0.7
Medical Care	452.171	451.389	451.331	2.2	-0.2	0.0
Medical care commodities.....	368.131	367.148	366.016	2.9	-0.6	-0.3
Medical care services.....	480.167	479.474	479.840	1.9	-0.1	0.1
Professional services	392.239	391.390	391.944	1.2	-0.1	0.1
Recreation ⁽³⁾	117.763	117.747	117.685	0.0	-0.1	-0.1
Education and communication ⁽³⁾	139.344	139.146	139.346	-0.3	0.0	0.1
Other goods and services	400.002	401.123	401.493	1.8	0.4	0.1
Commodity and Service Group						
All Items.....	224.732	225.946	225.853	-0.5	0.5	0.0
Commodities	179.851	180.816	180.282	-3.3	0.2	-0.3
Commodities less food & beverages.....	150.980	152.236	151.238	-6.1	0.2	-0.7
Nondurables less food & beverages	194.055	197.117	195.228	-9.0	0.6	-1.0
Nondurables less food, beverages, and apparel	244.031	249.450	247.507	-10.5	1.4	-0.8
Durables	108.192	107.836	107.646	-1.2	-0.5	-0.2
Services.....	271.206	272.677	273.022	1.4	0.7	0.1
Rent of shelter ⁽²⁾	255.013	255.972	256.423	2.3	0.6	0.2

Note: See footnotes at end of table.

Table 1. Consumer Price Index for All Urban Consumers (CPI-U): Indexes and percent changes for selected periods Midwest (1982-84=100 unless otherwise noted) - Continued

Item and Group	Indexes			Percent change from-		
	May 2015	Jun. 2015	Jul. 2015	Jul. 2014	May 2015	Jun. 2015
Transportation services	295.699	294.771	294.209	2.6	-0.5	-0.2
Other services	327.143	326.963	327.062	0.7	0.0	0.0
Special aggregate indexes:						
All items less medical care	213.968	215.276	215.182	-0.8	0.6	0.0
All items less food	222.434	223.788	223.573	-0.8	0.5	-0.1
All items less shelter	218.520	219.859	219.567	-1.6	0.5	-0.1
Commodities less food	153.930	155.115	154.128	-5.9	0.1	-0.6
Nondurables	216.255	217.991	217.267	-3.9	0.5	-0.3
Nondurables less food	196.681	199.498	197.685	-8.5	0.5	-0.9
Nondurables less food and apparel	242.658	247.464	245.659	-9.8	1.2	-0.7
Services less rent of shelter ⁽²⁾	304.728	306.867	307.109	0.6	0.8	0.1
Services less medical care services	255.609	257.225	257.567	1.3	0.8	0.1
Energy	202.549	214.413	212.965	-15.6	5.1	-0.7
All items less energy	229.565	229.688	229.735	1.2	0.1	0.0
All items less food and energy	228.689	228.768	228.702	1.2	0.0	0.0
Commodities less food and energy commodities	146.660	146.266	145.704	-0.9	-0.7	-0.4
Energy commodities	235.229	248.381	244.054	-23.1	3.8	-1.7
Services less energy services	282.656	283.065	283.345	2.0	0.2	0.1

Footnotes

(1) This index series was calculated using a Laspeyres estimator. All other item stratum index series were calculated using a geometric means estimator.

(2) Index is on a December 1982=100 base.

(3) Indexes on a December 1997=100 base.

(4) Special index based on a substantially smaller sample.

(5) Indexes on a December 1993=100 base.

Regions defined as the four Census regions. Midwest includes Illinois, Indiana, Iowa, Kansas, Michigan, Minnesota, Missouri, Nebraska, North Dakota, Ohio, South Dakota, and Wisconsin.

NOTE: Index applies to a month as a whole, not to any specific date. Data not seasonally adjusted.

Table 2. Consumer Price Index for Urban Wage Earners and Clerical Workers (CPI-W): Indexes and percent changes for selected periods Midwest (1982-84=100 unless otherwise noted)

Item and Group	Indexes			Percent change from-		
	May 2015	Jun. 2015	Jul. 2015	Jul. 2014	May 2015	Jun. 2015
Expenditure category						
All Items.....	219.773	221.193	221.136	-0.9	0.6	0.0
All items (December 1977=100).....	355.421	357.718	357.626			
Food and beverages	239.044	239.366	240.072	1.4	0.4	0.3
Food	238.668	239.125	239.885	1.5	0.5	0.3
Food at home	229.522	230.019	231.075	0.4	0.7	0.5
Food away from home.....	255.309	255.686	255.868	3.4	0.2	0.1
Alcoholic beverages	243.407	241.571	241.409	0.5	-0.8	-0.1
Housing	206.881	208.744	209.132	1.0	1.1	0.2
Shelter	237.663	238.455	238.856	2.4	0.5	0.2
Rent of primary residence ⁽¹⁾	247.057	247.934	248.371	2.9	0.5	0.2
Owners' equiv. rent of residences ^{(1) (2)}	234.637	235.262	235.562	2.2	0.4	0.1
Owners' equiv. rent of primary residence ^{(1) (2)}	234.649	235.272	235.570	2.2	0.4	0.1
Fuels and utilities.....	212.672	222.303	223.019	-4.1	4.9	0.3
Household energy	176.167	185.988	186.568	-6.2	5.9	0.3
Energy services ⁽¹⁾	181.709	192.680	193.555	-5.6	6.5	0.5
Electricity ⁽¹⁾	197.543	211.880	213.490	1.4	8.1	0.8
Utility (piped) gas service ⁽¹⁾	144.736	148.703	148.096	-21.1	2.3	-0.4
Household furnishings and operations	115.186	114.552	114.661	-1.0	-0.5	0.1
Apparel	116.474	115.795	114.283	-2.7	-1.9	-1.3
Transportation	201.473	205.074	203.697	-8.2	1.1	-0.7
Private transportation	197.694	201.396	200.232	-8.3	1.3	-0.6
New and used motor vehicles ⁽³⁾	100.821	100.765	100.590	-0.6	-0.2	-0.2
New vehicles	143.938	143.681	142.441	0.1	-1.0	-0.9
Used cars and trucks.....	151.738	152.053	152.193	-1.7	0.3	0.1
Motor fuel	237.073	251.400	247.174	-23.1	4.3	-1.7
Gasoline (all types).....	235.619	249.981	245.798	-23.0	4.3	-1.7
Gasoline, unleaded regular ⁽⁴⁾	231.882	246.177	241.675	-23.5	4.2	-1.8
Gasoline, unleaded midgrade ^{(4) (5)}	264.433	278.998	275.352	-22.3	4.1	-1.3
Gasoline, unleaded premium ⁽⁴⁾	242.079	256.222	254.381	-19.6	5.1	-0.7
Medical Care	457.217	456.576	456.457	2.1	-0.2	0.0
Medical care commodities.....	361.729	361.090	359.858	2.9	-0.5	-0.3
Medical care services.....	486.468	485.839	486.179	1.9	-0.1	0.1
Professional services	393.404	392.764	393.314	1.3	0.0	0.1
Recreation ⁽³⁾	114.071	113.930	113.867	-0.4	-0.2	-0.1
Education and communication ⁽³⁾	131.413	131.196	131.317	-1.1	-0.1	0.1
Other goods and services	442.822	444.842	446.645	2.4	0.9	0.4
Commodity and Service Group						
All Items.....	219.773	221.193	221.136	-0.9	0.6	0.0
Commodities	182.877	184.171	183.710	-3.6	0.5	-0.3
Commodities less food & beverages.....	155.496	157.197	156.230	-6.8	0.5	-0.6
Nondurables less food & beverages	202.503	206.411	204.617	-10.0	1.0	-0.9
Nondurables less food, beverages, and apparel	255.616	262.262	260.277	-11.6	1.8	-0.8
Durables	110.605	110.370	110.139	-1.2	-0.4	-0.2
Services.....	263.757	265.334	265.736	1.3	0.8	0.2
Rent of shelter ⁽²⁾	235.986	236.785	237.187	2.4	0.5	0.2
Transportation services	293.651	292.842	293.227	3.4	-0.1	0.1
Other services	303.258	302.888	302.894	0.2	-0.1	0.0

Note: See footnotes at end of table.

Table 2. Consumer Price Index for Urban Wage Earners and Clerical Workers (CPI-W): Indexes and percent changes for selected periods Midwest (1982-84=100 unless otherwise noted) - Continued

Item and Group	Indexes			Percent change from-		
	May 2015	Jun. 2015	Jul. 2015	Jul. 2014	May 2015	Jun. 2015
Special aggregate indexes:						
All items less medical care	210.656	212.149	212.095	-1.1	0.7	0.0
All items less food	216.104	217.697	217.492	-1.4	0.6	-0.1
All items less shelter	215.780	217.439	217.218	-2.2	0.7	-0.1
Commodities less food	158.191	159.808	158.858	-6.5	0.4	-0.6
Nondurables	221.060	223.243	222.655	-4.3	0.7	-0.3
Nondurables less food	204.540	208.147	206.439	-9.4	0.9	-0.8
Nondurables less food and apparel	252.909	258.826	257.002	-10.8	1.6	-0.7
Services less rent of shelter ⁽²⁾	269.613	271.914	272.277	0.3	1.0	0.1
Services less medical care services	248.998	250.691	251.093	1.3	0.8	0.2
Energy	203.848	215.731	214.066	-16.1	5.0	-0.8
All items less energy	223.494	223.633	223.774	1.3	0.1	0.1
All items less food and energy	220.671	220.743	220.754	1.2	0.0	0.0
Commodities less food and energy commodities	149.943	149.666	149.253	-0.7	-0.5	-0.3
Energy commodities	236.439	249.830	245.462	-23.1	3.8	-1.7
Services less energy services	274.603	274.943	275.282	2.0	0.2	0.1

Footnotes

(1) This index series was calculated using a Laspeyres estimator. All other item stratum index series were calculated using a geometric means estimator.

(2) Index is on a December 1984=100 base.

(3) Indexes on a December 1997=100 base.

(4) Special index based on a substantially smaller sample.

(5) Indexes on a December 1993=100 base.

Regions defined as the four Census regions. Midwest includes Illinois, Indiana, Iowa, Kansas, Michigan, Minnesota, Missouri, Nebraska, North Dakota, Ohio, South Dakota, and Wisconsin.

NOTE: Index applies to a month as a whole, not to any specific date. Data not seasonally adjusted.