



**For Release: Friday, July 15, 2016**

**16-1318-KAN**

MOUNTAIN-PLAINS INFORMATION OFFICE: Kansas City, Mo.

Technical information: (816) 285-7000 BLSInfoKansasCity@bls.gov [www.bls.gov/regions/mountain-plains](http://www.bls.gov/regions/mountain-plains)

Media contact: (816) 285-7000

### ERRATA

Incorrect prices for prescription drugs were used for the CPI-U and CPI-W indexes from May through August 2016 in a number of areas. Several indexes were affected, including the all items and medical care indexes. A list of the series affected can be found at [www.bls.gov/bls/errata/cpi-price-corrections-10182016.htm](http://www.bls.gov/bls/errata/cpi-price-corrections-10182016.htm), and the corrected data are available in the CPI database ([www.bls.gov/cpi/data.htm](http://www.bls.gov/cpi/data.htm)).

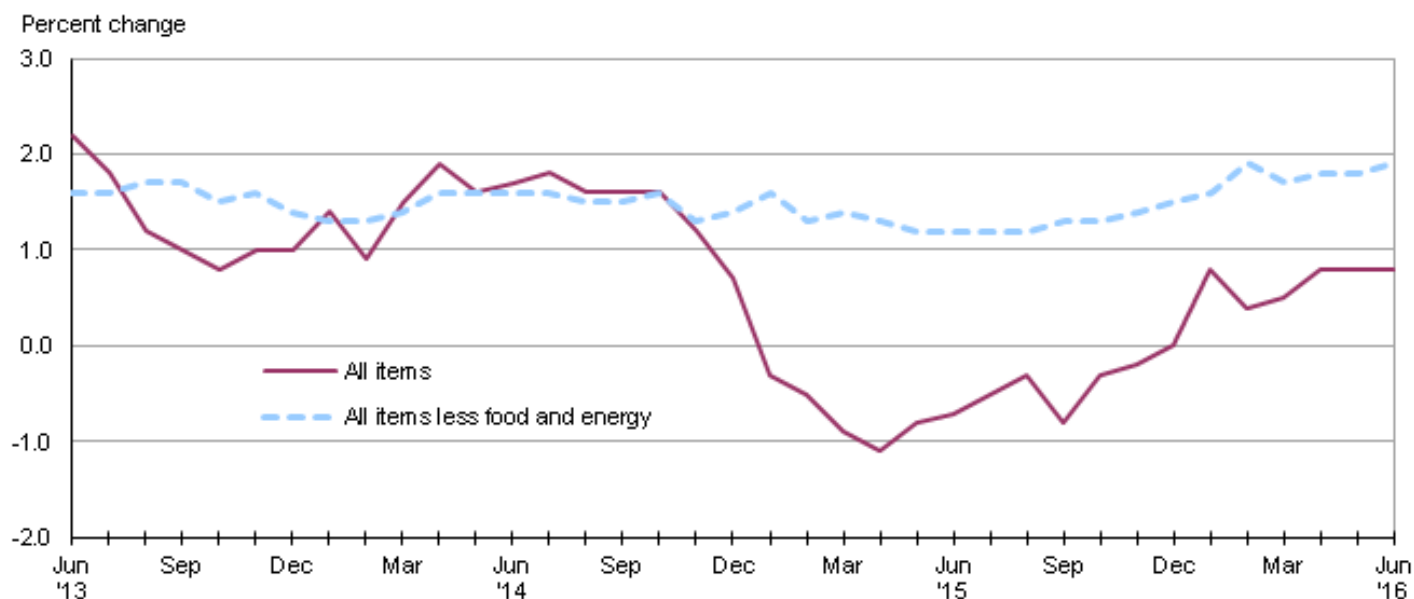
## Consumer Price Index, Midwest Region – June 2016

### Prices in the Midwest up 0.6 percent in June and 0.8 percent higher over the year

The Consumer Price Index for All Urban Consumers (CPI-U) in the Midwest rose 0.6 percent in June, the U.S. Bureau of Labor Statistics reported today. The monthly advance was largely attributable to a 6.5-percent increase in energy costs. Food prices declined 0.2 percent while the index for all items less food and energy was up 0.2 percent. (Data in this report are not seasonally adjusted. Accordingly, month-to-month changes may reflect the impact of seasonal influences.)

The CPI-U for the Midwest advanced 0.8 percent from June 2015 to June 2016. (See [chart 1](#) and [table A](#).) The energy index, which includes motor fuel and household fuels, fell 7.4 percent, but prices for food were up 0.4 percent. Excluding food and energy, the CPI-U rose 1.9 percent over the year. (See [table 1](#).)

**Chart 1. Over-the-year percent change in CPI-U, Midwest region, June 2013–June 2016**



Source: U.S. Bureau of Labor Statistics.

## Food

Food prices in the Midwest declined 0.2 percent in June. The index for food at home decreased 0.4 percent while costs for food away from home were unchanged over the month.

From June 2015 to June 2016, the index for food rose 0.4 percent, the smallest annual increase since April 2010. Rising costs for food away from home (2.7 percent) were responsible for the yearly advance. Prices for food at home registered their ninth consecutive over-the-year decline, down 1.2 percent since June 2015.

## Energy

The energy index rose 6.5 percent in June, the fourth consecutive monthly advance. Higher prices for motor fuel (8.5 percent) and electricity (6.2 percent) led the gain. Electricity prices typically rise in June reflecting seasonal rate schedules. Higher costs for utility (piped) gas service (1.4 percent) also contributed to the increase in the energy index.

Despite the recent monthly advances, energy prices decreased 7.4 percent from June 2015 to June 2016. Prices for motor fuel and utility (piped) gas service were down 11.4 and 9.6 percent, respectively. Costs for electricity were 0.5 percent lower over the year.

## All items less food and energy

The index for all items less food and energy for the Midwest rose 0.2 percent in June. Expenditure categories registering higher prices over the month included shelter (0.6 percent), recreation (0.7 percent), and medical care commodities (1.0 percent). In contrast, apparel (-1.8 percent) and used cars and trucks (-0.5 percent) were among the expenditure categories posting lower prices over the month.

The index for all items less food and energy was up 1.9 percent from June 2015 to June 2016. A 3.0-percent rise in shelter costs led the advance. Prices for medical care services had the next largest upward impact with a 3.8-percent increase.

The Midwest Consumer Price Index for All Urban Consumers (CPI-U) stood at 227.828 in June 2016. A typical market basket of goods and services that cost \$100.00 in the 1982-84 base period cost \$227.83 in June 2016.

## CPI-W

In June, the Midwest Consumer Price Index for Urban Wage Earners and Clerical Workers (CPI-W) was 222.224, up 0.6 percent over the month. The CPI-W increased 0.5 percent over the year.

**Table A. Midwest region CPI-U 1-month and 12-month percent changes, all items index, not seasonally adjusted**

Month	2012		2013		2014		2015		2016	
	1-month	12-month	1-month	12-month	1-month	12-month	1-month	12-month	1-month	12-month
January.....	0.6	2.8	0.1	1.3	0.5	1.4	-0.6	-0.3	0.3	0.8
February.....	0.2	2.7	1.1	2.2	0.6	0.9	0.3	-0.5	0.0	0.4
March.....	1.0	2.8	0.2	1.4	0.9	1.5	0.6	-0.9	0.6	0.5
April.....	0.2	2.3	-0.1	1.2	0.3	1.9	0.1	-1.1	0.4	0.8
May.....	-0.1	1.5	0.5	1.8	0.2	1.6	0.4	-0.8	0.4	0.8
June.....	-0.1	1.4	0.3	2.2	0.5	1.7	0.5	-0.7	0.6	0.8
July.....	0.0	1.3	-0.4	1.8	-0.3	1.8	0.0	-0.5		
August.....	0.7	1.8	0.1	1.2	-0.2	1.6	0.0	-0.3		
September.....	0.3	1.9	0.1	1.0	0.1	1.6	-0.3	-0.8		
October.....	-0.3	2.2	-0.5	0.8	-0.5	1.6	-0.1	-0.3		

**Table A. Midwest region CPI-U 1-month and 12-month percent changes, all items index, not seasonally adjusted - Continued**

Month	2012		2013		2014		2015		2016	
	1-month	12-month	1-month	12-month	1-month	12-month	1-month	12-month	1-month	12-month
November.....	-0.4	1.8	-0.2	1.0	-0.6	1.2	-0.5	-0.2		
December.....	-0.2	1.8	-0.2	1.0	-0.7	0.7	-0.6	0.0		

**The July 2016 Consumer Price Index for the Midwest region is scheduled to be released on Tuesday, August 16, 2016.**

### Technical Note

The Consumer Price Index (CPI) is a measure of the average change in prices over time in a fixed market basket of goods and services. The Bureau of Labor Statistics publishes CPIs for two population groups: (1) a CPI for All Urban Consumers (CPI-U) which covers approximately 89 percent of the total population and (2) a CPI for Urban Wage Earners and Clerical Workers (CPI-W) which covers approximately 28 percent of the total population. The CPI-U includes, in addition to wage earners and clerical workers, groups such as professional, managerial, and technical workers, the self-employed, short-term workers, the unemployed, and retirees and others not in the labor force.

The CPI is based on prices of food, clothing, shelter, and fuels, transportation fares, charges for doctors' and dentists' services, drugs, and the other goods and services that people buy for day-to-day living. Each month, prices are collected in 87 urban areas across the country from about 6,000 housing units and approximately 24,000 retail establishments--department stores, supermarkets, hospitals, filling stations, and other types of stores and service establishments. All taxes directly associated with the purchase and use of items are included in the index.

The index measures price changes from a designated reference date (1982-84) that equals 100.0. An increase of 16.5 percent, for example, is shown as 116.5. This change can also be expressed in dollars as follows: the price of a base period "market basket" of goods and services in the CPI has risen from \$10 in 1982-84 to \$11.65. For further details see the CPI home page on the Internet at [www.bls.gov/cpi](http://www.bls.gov/cpi) and the BLS Handbook of Methods, Chapter 17, The Consumer Price Index, available on the Internet at [www.bls.gov/opub/hom/homch17\\_a.htm](http://www.bls.gov/opub/hom/homch17_a.htm).

In calculating the index, price changes for the various items in each location are averaged together with weights that represent their importance in the spending of the appropriate population group. Local data are then combined to obtain a U.S. city average. Because the sample size of a local area is smaller, the local area index is subject to substantially more sampling and other measurement error than the national index. In addition, local indexes are not adjusted for seasonal influences. As a result, local area indexes show greater volatility than the national index, although their long-term trends are quite similar. **NOTE: Area indexes do not measure differences in the level of prices between areas; they only measure the average change in prices for each area since the base period.**

The Midwest region is comprised of Illinois, Indiana, Iowa, Kansas, Michigan, Minnesota, Missouri, Nebraska, North Dakota, Ohio, South Dakota, and Wisconsin.

Information in this release will be made available to sensory impaired individuals upon request. Voice phone: 202-691-5200; Federal Relay Service: 1-800-877-8339.



**Table 1. Consumer Price Index for All Urban Consumers (CPI-U): Indexes and percent changes for selected periods Midwest (1982-84=100 unless otherwise noted)**

Item and Group	Indexes			Percent change from-		
	Apr. 2016	May 2016	Jun. 2016	Jun. 2015	Apr. 2016	May 2016
<b>Expenditure category</b>						
All Items.....	225.609	226.478	227.828	0.8	1.0	0.6
All items (December 1977=100).....	367.079	368.492	370.689			
Food and beverages .....	240.898	240.398	239.963	0.4	-0.4	-0.2
Food .....	240.489	239.941	239.478	0.4	-0.4	-0.2
Food at home .....	228.662	227.107	226.303	-1.2	-1.0	-0.4
Food away from home.....	260.295	261.470	261.589	2.7	0.5	0.0
Alcoholic beverages .....	244.237	244.453	244.428	1.5	0.1	0.0
Housing .....	214.974	215.543	217.518	1.9	1.2	0.9
Shelter .....	254.693	255.109	256.656	3.0	0.8	0.6
Rent of primary residence <sup>(1)</sup> .....	252.983	253.486	254.235	2.8	0.5	0.3
Owners' equiv. rent of residences <sup>(1) (2)</sup> .....	257.889	258.534	259.216	2.7	0.5	0.3
Owners' equiv. rent of primary residence <sup>(1) (2)</sup> .....	257.877	258.523	259.206	2.7	0.5	0.3
Fuels and utilities.....	207.060	209.801	217.622	-1.6	5.1	3.7
Household energy .....	168.634	171.218	179.174	-3.3	6.3	4.6
Energy services <sup>(1)</sup> .....	175.795	178.634	187.236	-3.2	6.5	4.8
Electricity <sup>(1)</sup> .....	196.351	200.527	212.924	-0.5	8.4	6.2
Utility (piped) gas service <sup>(1)</sup> .....	131.335	131.821	133.708	-9.6	1.8	1.4
Household furnishings and operations .....	115.053	114.784	114.596	-1.2	-0.4	-0.2
Apparel .....	118.214	118.928	116.767	-0.3	-1.2	-1.8
Transportation .....	192.163	195.422	198.807	-3.6	3.5	1.7
Private transportation .....	185.942	189.040	192.751	-3.7	3.7	2.0
New and used motor vehicles <sup>(3)</sup> .....	99.447	99.168	99.176	-1.0	-0.3	0.0
New vehicles .....	139.816	139.611	139.739	-0.5	-0.1	0.1
New cars and trucks <sup>(3) (4)</sup> .....	98.824	98.711	98.802	-0.5	0.0	0.1
New cars <sup>(4)</sup> .....	135.719	135.531	135.564	-0.9	-0.1	0.0
Used cars and trucks.....	148.092	147.886	147.087	-2.9	-0.7	-0.5
Motor fuel .....	189.416	204.859	222.246	-11.4	17.3	8.5
Gasoline (all types).....	188.601	203.986	221.405	-11.2	17.4	8.5
Gasoline, unleaded regular <sup>(4)</sup> .....	183.205	198.571	216.066	-12.1	17.9	8.8
Gasoline, Unleaded midgrade <sup>(4) (5)</sup> .....	220.484	236.644	253.631	-9.2	15.0	7.2
Gasoline, unleaded premium <sup>(4)</sup> .....	210.119	224.387	240.606	-6.2	14.5	7.2
Medical Care .....	465.161	466.998	467.459	3.6	0.5	0.1
Medical care commodities.....	376.989	374.011	377.876	2.9	0.2	1.0
Medical care services.....	494.715	498.263	497.507	3.8	0.6	-0.2
Professional services .....	401.109	406.529	406.220	3.8	1.3	-0.1
Recreation <sup>(3)</sup> .....	119.005	118.939	119.718	1.7	0.6	0.7
Education and communication <sup>(3)</sup> .....	140.773	140.355	140.213	0.8	-0.4	-0.1
Other goods and services .....	406.716	408.204	409.344	2.0	0.6	0.3
<b>Commodity and Service Group</b>						
All Items.....	225.609	226.478	227.828	0.8	1.0	0.6
Commodities .....	176.218	177.169	177.969	-1.6	1.0	0.5
Commodities less food & beverages.....	144.924	146.425	147.695	-3.0	1.9	0.9
Nondurables less food & beverages .....	183.774	187.479	190.727	-3.2	3.8	1.7
Nondurables less food, beverages, and apparel .....	226.842	232.484	239.213	-4.1	5.5	2.9
Durables .....	106.232	105.995	105.710	-2.0	-0.5	-0.3
Services.....	276.559	277.345	279.260	2.4	1.0	0.7
Rent of shelter <sup>(2)</sup> .....	261.666	262.087	263.726	3.0	0.8	0.6

Note: See footnotes at end of table.

**Table 1. Consumer Price Index for All Urban Consumers (CPI-U): Indexes and percent changes for selected periods Midwest (1982-84=100 unless otherwise noted) - Continued**

Item and Group	Indexes			Percent change from-		
	Apr. 2016	May 2016	Jun. 2016	Jun. 2015	Apr. 2016	May 2016
Transportation services .....	299.813	300.661	300.346	1.9	0.2	-0.1
Other services .....	332.868	332.578	334.538	2.3	0.5	0.6
<b>Special aggregate indexes:</b>						
All items less medical care .....	214.271	215.093	216.486	0.6	1.0	0.6
All items less food .....	223.082	224.177	225.816	0.9	1.2	0.7
All items less shelter .....	217.348	218.385	219.678	-0.1	1.1	0.6
Commodities less food .....	148.038	149.513	150.754	-2.8	1.8	0.8
Nondurables .....	211.801	213.519	215.027	-1.4	1.5	0.7
Nondurables less food .....	186.980	190.490	193.554	-3.0	3.5	1.6
Nondurables less food and apparel .....	227.040	232.176	238.276	-3.7	4.9	2.6
Services less rent of shelter <sup>(2)</sup> .....	308.907	310.138	312.465	1.8	1.2	0.8
Services less medical care services .....	260.292	260.876	262.983	2.2	1.0	0.8
Energy .....	178.323	186.465	198.523	-7.4	11.3	6.5
All items less energy .....	233.076	233.238	233.549	1.7	0.2	0.1
All items less food and energy .....	232.439	232.730	233.182	1.9	0.3	0.2
Commodities less food and energy commodities .....	146.190	146.086	145.483	-0.5	-0.5	-0.4
Energy commodities .....	189.008	203.723	220.358	-11.3	16.6	8.2
Services less energy services .....	289.317	289.892	291.114	2.8	0.6	0.4

**Footnotes**

(1) This index series was calculated using a Laspeyres estimator. All other item stratum index series were calculated using a geometric means estimator.

(2) Index is on a December 1982=100 base.

(3) Indexes on a December 1997=100 base.

(4) Special index based on a substantially smaller sample.

(5) Indexes on a December 1993=100 base.

Regions defined as the four Census regions. Midwest includes Illinois, Indiana, Iowa, Kansas, Michigan, Minnesota, Missouri, Nebraska, North Dakota, Ohio, South Dakota, and Wisconsin.

NOTE: Index applies to a month as a whole, not to any specific date. Data not seasonally adjusted.

**Table 2. Consumer Price Index for Urban Wage Earners and Clerical Workers (CPI-W): Indexes and percent changes for selected periods Midwest (1982-84=100 unless otherwise noted)**

Item and Group	Indexes			Percent change from-		
	Apr. 2016	May 2016	Jun. 2016	Jun. 2015	Apr. 2016	May 2016
<b>Expenditure category</b>						
All Items.....	219.816	220.833	222.224	0.5	1.1	0.6
All items (December 1977=100).....	355.491	357.136	359.385			
Food and beverages .....	240.986	240.312	239.903	0.2	-0.4	-0.2
Food .....	240.589	239.854	239.419	0.1	-0.5	-0.2
Food at home .....	229.263	227.647	226.964	-1.3	-1.0	-0.3
Food away from home.....	261.616	262.708	262.789	2.8	0.4	0.0
Alcoholic beverages .....	245.702	246.027	246.052	1.9	0.1	0.0
Housing .....	209.764	210.481	212.253	1.7	1.2	0.8
Shelter .....	243.586	244.072	245.147	2.8	0.6	0.4
Rent of primary residence <sup>(1)</sup> .....	253.595	254.101	254.852	2.8	0.5	0.3
Owners' equiv. rent of residences <sup>(1) (2)</sup> .....	240.390	241.006	241.628	2.7	0.5	0.3
Owners' equiv. rent of primary residence <sup>(1) (2)</sup> .....	240.390	241.010	241.630	2.7	0.5	0.3
Fuels and utilities.....	208.388	211.183	218.829	-1.6	5.0	3.6
Household energy .....	169.697	172.293	180.001	-3.2	6.1	4.5
Energy services <sup>(1)</sup> .....	175.511	178.419	186.752	-3.1	6.4	4.7
Electricity <sup>(1)</sup> .....	194.849	199.019	210.695	-0.6	8.1	5.9
Utility (piped) gas service <sup>(1)</sup> .....	132.205	132.734	134.736	-9.4	1.9	1.5
Household furnishings and operations .....	113.064	113.026	112.782	-1.5	-0.2	-0.2
Apparel .....	115.787	116.956	114.069	-1.5	-1.5	-2.5
Transportation .....	188.984	192.670	196.607	-4.1	4.0	2.0
Private transportation .....	185.270	188.869	192.941	-4.2	4.1	2.2
New and used motor vehicles <sup>(3)</sup> .....	99.696	99.540	99.467	-1.3	-0.2	-0.1
New vehicles .....	143.171	142.980	143.092	-0.4	-0.1	0.1
Used cars and trucks.....	148.726	148.499	147.690	-2.9	-0.7	-0.5
Motor fuel .....	190.071	205.454	222.789	-11.4	17.2	8.4
Gasoline (all types).....	189.154	204.469	221.815	-11.3	17.3	8.5
Gasoline, unleaded regular <sup>(4)</sup> .....	183.624	198.883	216.279	-12.1	17.8	8.7
Gasoline, unleaded midgrade <sup>(4) (5)</sup> .....	220.449	236.643	253.730	-9.1	15.1	7.2
Gasoline, unleaded premium <sup>(4)</sup> .....	210.000	224.271	240.356	-6.2	14.5	7.2
Medical Care .....	470.969	472.524	472.968	3.6	0.4	0.1
Medical care commodities.....	370.457	366.694	370.801	2.7	0.1	1.1
Medical care services.....	502.064	505.498	504.633	3.9	0.5	-0.2
Professional services .....	403.669	408.874	408.624	4.0	1.2	-0.1
Recreation <sup>(3)</sup> .....	115.229	115.116	115.518	1.4	0.3	0.3
Education and communication <sup>(3)</sup> .....	132.651	132.174	132.049	0.7	-0.5	-0.1
Other goods and services .....	453.227	454.081	456.608	2.6	0.7	0.6
<b>Commodity and Service Group</b>						
All Items.....	219.816	220.833	222.224	0.5	1.1	0.6
Commodities .....	178.547	179.801	180.938	-1.8	1.3	0.6
Commodities less food & beverages.....	148.346	150.322	152.032	-3.3	2.5	1.1
Nondurables less food & beverages .....	189.862	194.624	199.016	-3.6	4.8	2.3
Nondurables less food, beverages, and apparel .....	235.695	242.548	251.021	-4.3	6.5	3.5
Durables .....	108.573	108.409	108.071	-2.1	-0.5	-0.3
Services.....	268.798	269.587	271.281	2.2	0.9	0.6
Rent of shelter <sup>(2)</sup> .....	241.959	242.434	243.545	2.9	0.7	0.5
Transportation services .....	298.834	299.680	299.874	2.4	0.3	0.1
Other services .....	308.237	307.752	308.960	2.0	0.2	0.4

Note: See footnotes at end of table.

**Table 2. Consumer Price Index for Urban Wage Earners and Clerical Workers (CPI-W): Indexes and percent changes for selected periods Midwest (1982-84=100 unless otherwise noted) - Continued**

Item and Group	Indexes			Percent change from-		
	Apr. 2016	May 2016	Jun. 2016	Jun. 2015	Apr. 2016	May 2016
<b>Special aggregate indexes:</b>						
All items less medical care .....	210.189	211.186	212.613	0.2	1.2	0.7
All items less food .....	215.753	217.048	218.728	0.5	1.4	0.8
All items less shelter .....	213.734	214.951	216.470	-0.4	1.3	0.7
Commodities less food .....	151.268	153.217	154.898	-3.1	2.4	1.1
Nondurables .....	215.502	217.696	219.821	-1.5	2.0	1.0
Nondurables less food .....	192.702	197.245	201.421	-3.2	4.5	2.1
Nondurables less food and apparel .....	234.948	241.265	249.047	-3.8	6.0	3.2
Services less rent of shelter <sup>(2)</sup> .....	273.127	274.181	276.344	1.6	1.2	0.8
Services less medical care services .....	253.382	254.008	255.848	2.1	1.0	0.7
Energy .....	178.439	186.952	199.092	-7.7	11.6	6.5
All items less energy .....	226.704	226.838	226.964	1.5	0.1	0.1
All items less food and energy .....	224.106	224.402	224.631	1.8	0.2	0.1
Commodities less food and energy commodities .....	149.411	149.391	148.736	-0.6	-0.5	-0.4
Energy commodities .....	189.822	204.416	220.984	-11.5	16.4	8.1
Services less energy services .....	281.089	281.624	282.517	2.8	0.5	0.3

**Footnotes**

(1) This index series was calculated using a Laspeyres estimator. All other item stratum index series were calculated using a geometric means estimator.

(2) Index is on a December 1984=100 base.

(3) Indexes on a December 1997=100 base.

(4) Special index based on a substantially smaller sample.

(5) Indexes on a December 1993=100 base.

Regions defined as the four Census regions. Midwest includes Illinois, Indiana, Iowa, Kansas, Michigan, Minnesota, Missouri, Nebraska, North Dakota, Ohio, South Dakota, and Wisconsin.

NOTE: Index applies to a month as a whole, not to any specific date. Data not seasonally adjusted.