



For Release: Tuesday, August 16, 2016

16-1689-KAN

MOUNTAIN-PLAINS INFORMATION OFFICE: Kansas City, Mo.

Technical information: (816) 285-7000 BLSInfoKansasCity@bls.gov www.bls.gov/regions/mountain-plains

Media contact: (816) 285-7000

ERRATA

Incorrect prices for prescription drugs were used for the CPI-U and CPI-W indexes from May through August 2016 in a number of areas. Several indexes were affected, including the all items and medical care indexes. A list of the series affected can be found at www.bls.gov/bls/errata/cpi-price-corrections-10182016.htm, and the corrected data are available in the CPI database (www.bls.gov/cpi/data.htm).

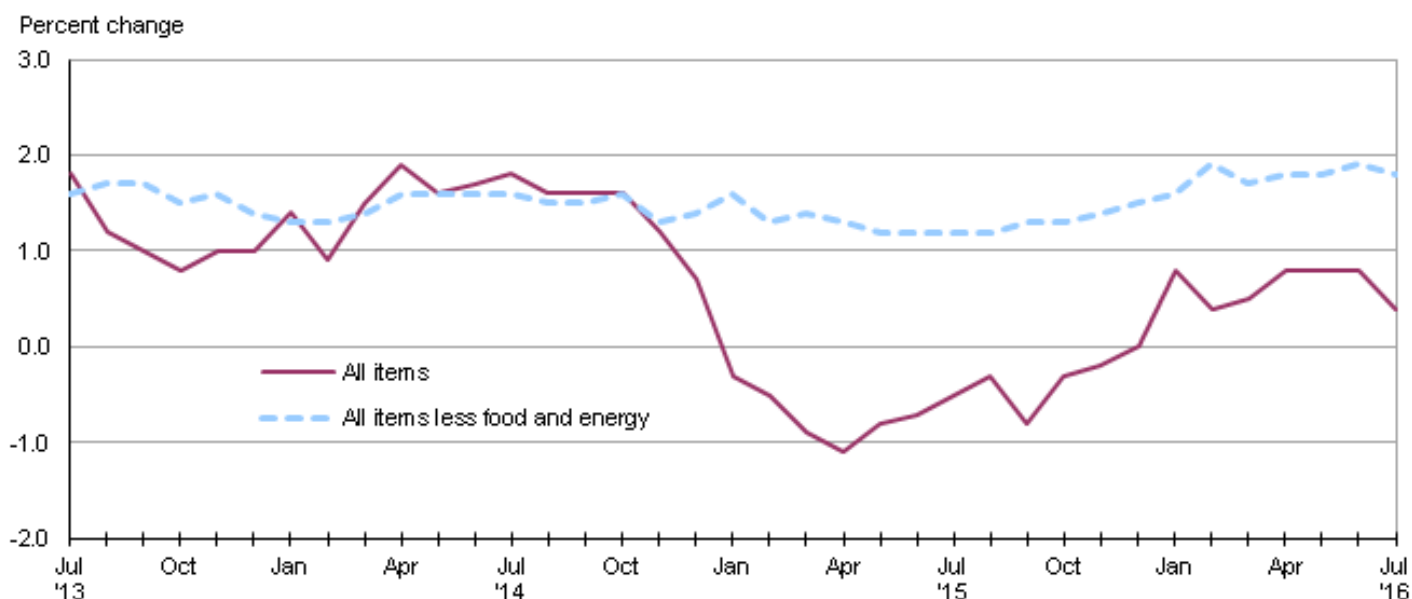
Consumer Price Index, Midwest Region – July 2016

Prices in the Midwest down 0.5 percent in July, but 0.4 percent higher over the year

The Consumer Price Index for All Urban Consumers (CPI-U) in the Midwest was down 0.5 percent in July following four consecutive monthly increases, the U.S. Bureau of Labor Statistics reported today. The July decrease was largely attributable to a 10.2-percent drop in motor fuel costs. The index for all items less food and energy, down 0.2 percent, also contributed to the monthly decline. Food prices were little changed (-0.1 percent) over the month. (Data in this report are not seasonally adjusted. Accordingly, month-to-month changes may reflect the impact of seasonal influences.)

The CPI-U for the Midwest advanced 0.4 percent from July 2015 to July 2016. (See [chart 1](#) and [table A](#).) The energy index, which includes motor fuel and household fuels, fell 10.4 percent, and prices for food were unchanged. Excluding food and energy, the CPI-U rose 1.8 percent over the year. (See [table 1](#).)

Chart 1. Over-the-year percent change in CPI-U, Midwest region, July 2013–July 2016



Source: U.S. Bureau of Labor Statistics.

Food

Food prices in the Midwest registered little movement (-0.1 percent) in July. The index for food at home was 0.2 percent lower, while costs for food away from home (0.1 percent) were virtually unchanged over the month.

From July 2015 to July 2016, the index for food was unchanged. Prices for food at home registered their tenth consecutive over-the-year decrease, down 1.8 percent since July 2015. This is the largest annual decline in the food at home index since November 2009. Costs for food away from home rose 2.7 percent over the year, offsetting the decrease in the food at home index.

Energy

The energy index turned down 3.9 percent in July following four consecutive monthly advances. The decrease in energy costs was largely attributable to a 10.2-percent decline in motor fuel prices. Conversely, electricity prices rose 0.5 percent and utility (piped) gas service costs advanced 6.4 percent over the month.

Energy costs fell 10.4 percent from July 2015 to July 2016, led by a 19.1-percent drop in motor fuel prices. Lower costs for utility (piped) gas service (-3.5 percent) and electricity (-0.8 percent) also contributed to the decline.

All items less food and energy

The index for all items less food and energy for the Midwest decreased 0.2 percent in July. Expenditure categories registering lower prices over the month included apparel (-2.6 percent), recreation (-0.3 percent), and new and used motor vehicles (-0.2 percent).

The index for all items less food and energy was up 1.8 percent from July 2015 to July 2016. A 2.7-percent rise in shelter costs led the advance. Prices for medical care services had the next largest upward impact with a 4.3-percent increase.

The Midwest Consumer Price Index for All Urban Consumers (CPI-U) stood at 226.777 in July 2016. A typical market basket of goods and services that cost \$100.00 in the 1982-84 base period cost \$226.78 in July 2016.

CPI-W

In July, the Midwest Consumer Price Index for Urban Wage Earners and Clerical Workers (CPI-W) was 221.072, down 0.5 percent over the month. The CPI-W was unchanged over the year.

Table A. Midwest region CPI-U 1-month and 12-month percent changes, all items index, not seasonally adjusted

Month	2012		2013		2014		2015		2016	
	1-month	12-month	1-month	12-month	1-month	12-month	1-month	12-month	1-month	12-month
January.....	0.6	2.8	0.1	1.3	0.5	1.4	-0.6	-0.3	0.3	0.8
February.....	0.2	2.7	1.1	2.2	0.6	0.9	0.3	-0.5	0.0	0.4
March.....	1.0	2.8	0.2	1.4	0.9	1.5	0.6	-0.9	0.6	0.5
April.....	0.2	2.3	-0.1	1.2	0.3	1.9	0.1	-1.1	0.4	0.8
May.....	-0.1	1.5	0.5	1.8	0.2	1.6	0.4	-0.8	0.4	0.8
June.....	-0.1	1.4	0.3	2.2	0.5	1.7	0.5	-0.7	0.6	0.8
July.....	0.0	1.3	-0.4	1.8	-0.3	1.8	0.0	-0.5	-0.5	0.4
August.....	0.7	1.8	0.1	1.2	-0.2	1.6	0.0	-0.3		
September.....	0.3	1.9	0.1	1.0	0.1	1.6	-0.3	-0.8		
October.....	-0.3	2.2	-0.5	0.8	-0.5	1.6	-0.1	-0.3		
November.....	-0.4	1.8	-0.2	1.0	-0.6	1.2	-0.5	-0.2		
December.....	-0.2	1.8	-0.2	1.0	-0.7	0.7	-0.6	0.0		

The August 2016 Consumer Price Index for the Midwest region is scheduled to be released on Friday, September 16, 2016.

Technical Note

The Consumer Price Index (CPI) is a measure of the average change in prices over time in a fixed market basket of goods and services. The Bureau of Labor Statistics publishes CPIs for two population groups: (1) a CPI for All Urban Consumers (CPI-U) which covers approximately 89 percent of the total population and (2) a CPI for Urban Wage Earners and Clerical Workers (CPI-W) which covers approximately 28 percent of the total population. The CPI-U includes, in addition to wage earners and clerical workers, groups such as professional, managerial, and technical workers, the self-employed, short-term workers, the unemployed, and retirees and others not in the labor force.

The CPI is based on prices of food, clothing, shelter, and fuels, transportation fares, charges for doctors' and dentists' services, drugs, and the other goods and services that people buy for day-to-day living. Each month, prices are collected in 87 urban areas across the country from about 6,000 housing units and approximately 24,000 retail establishments--department stores, supermarkets, hospitals, filling stations, and other types of stores and service establishments. All taxes directly associated with the purchase and use of items are included in the index.

The index measures price changes from a designated reference date (1982-84) that equals 100.0. An increase of 16.5 percent, for example, is shown as 116.5. This change can also be expressed in dollars as follows: the price of a base period "market basket" of goods and services in the CPI has risen from \$10 in 1982-84 to

\$11.65. For further details see the CPI home page on the Internet at www.bls.gov/cpi and the BLS Handbook of Methods, Chapter 17, The Consumer Price Index, available on the Internet at www.bls.gov/opub/hom/homch17_a.htm.

In calculating the index, price changes for the various items in each location are averaged together with weights that represent their importance in the spending of the appropriate population group. Local data are then combined to obtain a U.S. city average. Because the sample size of a local area is smaller, the local area index is subject to substantially more sampling and other measurement error than the national index. In addition, local indexes are not adjusted for seasonal influences. As a result, local area indexes show greater volatility than the national index, although their long-term trends are quite similar. **NOTE: Area indexes do not measure differences in the level of prices between areas; they only measure the average change in prices for each area since the base period.**

The Midwest region is comprised of Illinois, Indiana, Iowa, Kansas, Michigan, Minnesota, Missouri, Nebraska, North Dakota, Ohio, South Dakota, and Wisconsin.

Information in this release will be made available to sensory impaired individuals upon request. Voice phone: (202) 691-5200; Federal Relay Service: (800) 877-8339.

Table 1. Consumer Price Index for All Urban Consumers (CPI-U): Indexes and percent changes for selected periods Midwest (1982-84=100 unless otherwise noted)

Item and Group	Indexes			Percent change from-		
	May 2016	Jun. 2016	Jul. 2016	Jul. 2015	May 2016	Jun. 2016
Expenditure category						
All Items.....	226.478	227.828	226.777	0.4	0.1	-0.5
All items (December 1977=100).....	368.492	370.689	368.980			
Food and beverages	240.398	239.963	239.675	0.1	-0.3	-0.1
Food	239.941	239.478	239.193	0.0	-0.3	-0.1
Food at home	227.107	226.303	225.750	-1.8	-0.6	-0.2
Food away from home.....	261.470	261.589	261.764	2.7	0.1	0.1
Alcoholic beverages	244.453	244.428	244.086	1.5	-0.2	-0.1
Housing	215.543	217.518	217.823	1.8	1.1	0.1
Shelter	255.109	256.656	256.461	2.7	0.5	-0.1
Rent of primary residence ⁽¹⁾	253.486	254.235	254.876	2.9	0.5	0.3
Owners' equiv. rent of residences ^{(1) (2)}	258.534	259.216	259.951	2.9	0.5	0.3
Owners' equiv. rent of primary residence ^{(1) (2)}	258.523	259.206	259.941	2.9	0.5	0.3
Fuels and utilities.....	209.801	217.622	221.092	-0.4	5.4	1.6
Household energy	171.218	179.174	182.814	-1.6	6.8	2.0
Energy services ⁽¹⁾	178.634	187.236	191.213	-1.6	7.0	2.1
Electricity ⁽¹⁾	200.527	212.924	213.959	-0.8	6.7	0.5
Utility (piped) gas service ⁽¹⁾	131.821	133.708	142.223	-3.5	7.9	6.4
Household furnishings and operations	114.784	114.596	114.496	-1.5	-0.3	-0.1
Apparel	118.928	116.767	113.700	-1.4	-4.4	-2.6
Transportation	195.422	198.807	193.405	-5.5	-1.0	-2.7
Private transportation	189.040	192.751	187.884	-5.6	-0.6	-2.5
New and used motor vehicles ⁽³⁾	99.168	99.176	98.956	-1.1	-0.2	-0.2
New vehicles	139.611	139.739	139.202	0.0	-0.3	-0.4
New cars and trucks ^{(3) (4)}	98.711	98.802	98.363	-0.3	-0.4	-0.4
New cars ⁽⁴⁾	135.531	135.564	134.755	-0.6	-0.6	-0.6
Used cars and trucks.....	147.886	147.087	146.282	-3.5	-1.1	-0.5
Motor fuel	204.859	222.246	199.520	-19.1	-2.6	-10.2
Gasoline (all types).....	203.986	221.405	198.498	-19.1	-2.7	-10.3
Gasoline, unleaded regular ⁽⁴⁾	198.571	216.066	192.969	-20.1	-2.8	-10.7
Gasoline, Unleaded midgrade ^{(4) (5)}	236.644	253.631	229.768	-16.6	-2.9	-9.4
Gasoline, unleaded premium ⁽⁴⁾	224.387	240.606	220.598	-13.3	-1.7	-8.3
Medical Care	466.998	467.459	470.596	4.3	0.8	0.7
Medical care commodities.....	374.011	377.876	381.059	4.1	1.9	0.8
Medical care services.....	498.263	497.507	500.615	4.3	0.5	0.6
Professional services	406.529	406.220	405.979	3.6	-0.1	-0.1
Recreation ⁽³⁾	118.939	119.718	119.374	1.4	0.4	-0.3
Education and communication ⁽³⁾	140.355	140.213	140.204	0.6	-0.1	0.0
Other goods and services	408.204	409.344	408.123	1.7	0.0	-0.3
Commodity and Service Group						
All Items.....	226.478	227.828	226.777	0.4	0.1	-0.5
Commodities	177.169	177.969	175.534	-2.6	-0.9	-1.4
Commodities less food & beverages.....	146.425	147.695	144.476	-4.5	-1.3	-2.2
Nondurables less food & beverages	187.479	190.727	184.297	-5.6	-1.7	-3.4
Nondurables less food, beverages, and apparel	232.484	239.213	230.592	-6.8	-0.8	-3.6
Durables	105.995	105.710	105.093	-2.4	-0.9	-0.6
Services.....	277.345	279.260	279.621	2.4	0.8	0.1
Rent of shelter ⁽²⁾	262.087	263.726	263.511	2.8	0.5	-0.1

Note: See footnotes at end of table.

Table 1. Consumer Price Index for All Urban Consumers (CPI-U): Indexes and percent changes for selected periods Midwest (1982-84=100 unless otherwise noted) - Continued

Item and Group	Indexes			Percent change from-		
	May 2016	Jun. 2016	Jul. 2016	Jul. 2015	May 2016	Jun. 2016
Transportation services	300.661	300.346	298.673	1.5	-0.7	-0.6
Other services	332.578	334.538	334.674	2.3	0.6	0.0
Special aggregate indexes:						
All items less medical care	215.093	216.486	215.236	0.0	0.1	-0.6
All items less food	224.177	225.816	224.644	0.5	0.2	-0.5
All items less shelter	218.385	219.678	218.313	-0.6	0.0	-0.6
Commodities less food	149.513	150.754	147.595	-4.2	-1.3	-2.1
Nondurables	213.519	215.027	211.494	-2.7	-0.9	-1.6
Nondurables less food	190.490	193.554	187.465	-5.2	-1.6	-3.1
Nondurables less food and apparel	232.176	238.276	230.428	-6.2	-0.8	-3.3
Services less rent of shelter ⁽²⁾	310.138	312.465	313.473	2.1	1.1	0.3
Services less medical care services	260.876	262.983	263.143	2.2	0.9	0.1
Energy	186.465	198.523	190.806	-10.4	2.3	-3.9
All items less energy	233.238	233.549	233.143	1.5	0.0	-0.2
All items less food and energy	232.730	233.182	232.753	1.8	0.0	-0.2
Commodities less food and energy commodities	146.086	145.483	144.519	-0.8	-1.1	-0.7
Energy commodities	203.723	220.358	198.588	-18.6	-2.5	-9.9
Services less energy services	289.892	291.114	291.095	2.7	0.4	0.0

Footnotes

(1) This index series was calculated using a Laspeyres estimator. All other item stratum index series were calculated using a geometric means estimator.

(2) Index is on a December 1982=100 base.

(3) Indexes on a December 1997=100 base.

(4) Special index based on a substantially smaller sample.

(5) Indexes on a December 1993=100 base.

Regions defined as the four Census regions. Midwest includes Illinois, Indiana, Iowa, Kansas, Michigan, Minnesota, Missouri, Nebraska, North Dakota, Ohio, South Dakota, and Wisconsin.

NOTE: Index applies to a month as a whole, not to any specific date. Data not seasonally adjusted.

Table 2. Consumer Price Index for Urban Wage Earners and Clerical Workers (CPI-W): Indexes and percent changes for selected periods Midwest (1982-84=100 unless otherwise noted)

Item and Group	Indexes			Percent change from-		
	May 2016	Jun. 2016	Jul. 2016	Jul. 2015	May 2016	Jun. 2016
Expenditure category						
All Items.....	220.833	222.224	221.072	0.0	0.1	-0.5
All items (December 1977=100).....	357.136	359.385	357.522			
Food and beverages	240.312	239.903	239.622	-0.2	-0.3	-0.1
Food	239.854	239.419	239.138	-0.3	-0.3	-0.1
Food at home	227.647	226.964	226.461	-2.0	-0.5	-0.2
Food away from home.....	262.708	262.789	262.970	2.8	0.1	0.1
Alcoholic beverages	246.027	246.052	245.769	1.8	-0.1	-0.1
Housing	210.481	212.253	212.846	1.8	1.1	0.3
Shelter	244.072	245.147	245.338	2.7	0.5	0.1
Rent of primary residence ⁽¹⁾	254.101	254.852	255.497	2.9	0.5	0.3
Owners' equiv. rent of residences ^{(1) (2)}	241.006	241.628	242.309	2.9	0.5	0.3
Owners' equiv. rent of primary residence ^{(1) (2)}	241.010	241.630	242.307	2.9	0.5	0.3
Fuels and utilities.....	211.183	218.829	222.453	-0.3	5.3	1.7
Household energy	172.293	180.001	183.772	-1.5	6.7	2.1
Energy services ⁽¹⁾	178.419	186.752	190.849	-1.4	7.0	2.2
Electricity ⁽¹⁾	199.019	210.695	211.939	-0.7	6.5	0.6
Utility (piped) gas service ⁽¹⁾	132.734	134.736	143.651	-3.0	8.2	6.6
Household furnishings and operations	113.026	112.782	112.444	-1.9	-0.5	-0.3
Apparel	116.956	114.069	110.484	-3.3	-5.5	-3.1
Transportation	192.670	196.607	190.781	-6.3	-1.0	-3.0
Private transportation	188.869	192.941	187.372	-6.4	-0.8	-2.9
New and used motor vehicles ⁽³⁾	99.540	99.467	99.183	-1.4	-0.4	-0.3
New vehicles	142.980	143.092	142.430	0.0	-0.4	-0.5
Used cars and trucks.....	148.499	147.690	146.849	-3.5	-1.1	-0.6
Motor fuel	205.454	222.789	199.825	-19.2	-2.7	-10.3
Gasoline (all types).....	204.469	221.815	198.700	-19.2	-2.8	-10.4
Gasoline, unleaded regular ⁽⁴⁾	198.883	216.279	193.009	-20.1	-3.0	-10.8
Gasoline, unleaded midgrade ^{(4) (5)}	236.643	253.730	229.704	-16.6	-2.9	-9.5
Gasoline, unleaded premium ⁽⁴⁾	224.271	240.356	220.247	-13.4	-1.8	-8.4
Medical Care	472.524	472.968	476.383	4.4	0.8	0.7
Medical care commodities.....	366.694	370.801	374.242	4.0	2.1	0.9
Medical care services.....	505.498	504.633	508.003	4.5	0.5	0.7
Professional services	408.874	408.624	408.334	3.8	-0.1	-0.1
Recreation ⁽³⁾	115.116	115.518	115.159	1.1	0.0	-0.3
Education and communication ⁽³⁾	132.174	132.049	132.050	0.6	-0.1	0.0
Other goods and services	454.081	456.608	455.535	2.0	0.3	-0.2
Commodity and Service Group						
All Items.....	220.833	222.224	221.072	0.0	0.1	-0.5
Commodities	179.801	180.938	177.939	-3.1	-1.0	-1.7
Commodities less food & beverages.....	150.322	152.032	148.055	-5.2	-1.5	-2.6
Nondurables less food & beverages	194.624	199.016	190.890	-6.7	-1.9	-4.1
Nondurables less food, beverages, and apparel	242.548	251.021	240.192	-7.7	-1.0	-4.3
Durables	108.409	108.071	107.350	-2.5	-1.0	-0.7
Services.....	269.587	271.281	272.060	2.4	0.9	0.3
Rent of shelter ⁽²⁾	242.434	243.545	243.725	2.8	0.5	0.1
Transportation services	299.680	299.874	299.976	2.3	0.1	0.0
Other services	307.752	308.960	309.153	2.1	0.5	0.1

Note: See footnotes at end of table.

Table 2. Consumer Price Index for Urban Wage Earners and Clerical Workers (CPI-W): Indexes and percent changes for selected periods Midwest (1982-84=100 unless otherwise noted) - Continued

Item and Group	Indexes			Percent change from-		
	May 2016	Jun. 2016	Jul. 2016	Jul. 2015	May 2016	Jun. 2016
Special aggregate indexes:						
All items less medical care	211.186	212.613	211.286	-0.4	0.0	-0.6
All items less food	217.048	218.728	217.440	0.0	0.2	-0.6
All items less shelter	214.951	216.470	214.827	-1.1	-0.1	-0.8
Commodities less food	153.217	154.898	150.984	-5.0	-1.5	-2.5
Nondurables	217.696	219.821	215.394	-3.3	-1.1	-2.0
Nondurables less food	197.245	201.421	193.683	-6.2	-1.8	-3.8
Nondurables less food and apparel	241.265	249.047	239.082	-7.0	-0.9	-4.0
Services less rent of shelter ⁽²⁾	274.181	276.344	277.693	2.0	1.3	0.5
Services less medical care services	254.008	255.848	256.467	2.1	1.0	0.2
Energy	186.952	199.092	190.453	-11.0	1.9	-4.3
All items less energy	226.838	226.964	226.692	1.3	-0.1	-0.1
All items less food and energy	224.402	224.631	224.361	1.6	0.0	-0.1
Commodities less food and energy commodities	149.391	148.736	147.598	-1.1	-1.2	-0.8
Energy commodities	204.416	220.984	199.035	-18.9	-2.6	-9.9
Services less energy services	281.624	282.517	282.895	2.8	0.5	0.1

Footnotes

(1) This index series was calculated using a Laspeyres estimator. All other item stratum index series were calculated using a geometric means estimator.

(2) Index is on a December 1984=100 base.

(3) Indexes on a December 1997=100 base.

(4) Special index based on a substantially smaller sample.

(5) Indexes on a December 1993=100 base.

Regions defined as the four Census regions. Midwest includes Illinois, Indiana, Iowa, Kansas, Michigan, Minnesota, Missouri, Nebraska, North Dakota, Ohio, South Dakota, and Wisconsin.

NOTE: Index applies to a month as a whole, not to any specific date. Data not seasonally adjusted.