



For Release: Friday, September 16, 2016

16-1848-KAN

MOUNTAIN-PLAINS INFORMATION OFFICE: Kansas City, Mo.

Technical information: (816) 285-7000 BLSInfoKansasCity@bls.gov www.bls.gov/regions/mountain-plains

Media contact: (816) 285-7000

ERRATA

Incorrect prices for prescription drugs were used for the CPI-U and CPI-W indexes from May through August 2016 in a number of areas. Several indexes were affected, including the all items and medical care indexes. A list of the series affected can be found at www.bls.gov/bls/errata/cpi-price-corrections-10182016.htm, and the corrected data are available in the CPI database (www.bls.gov/cpi/data.htm).

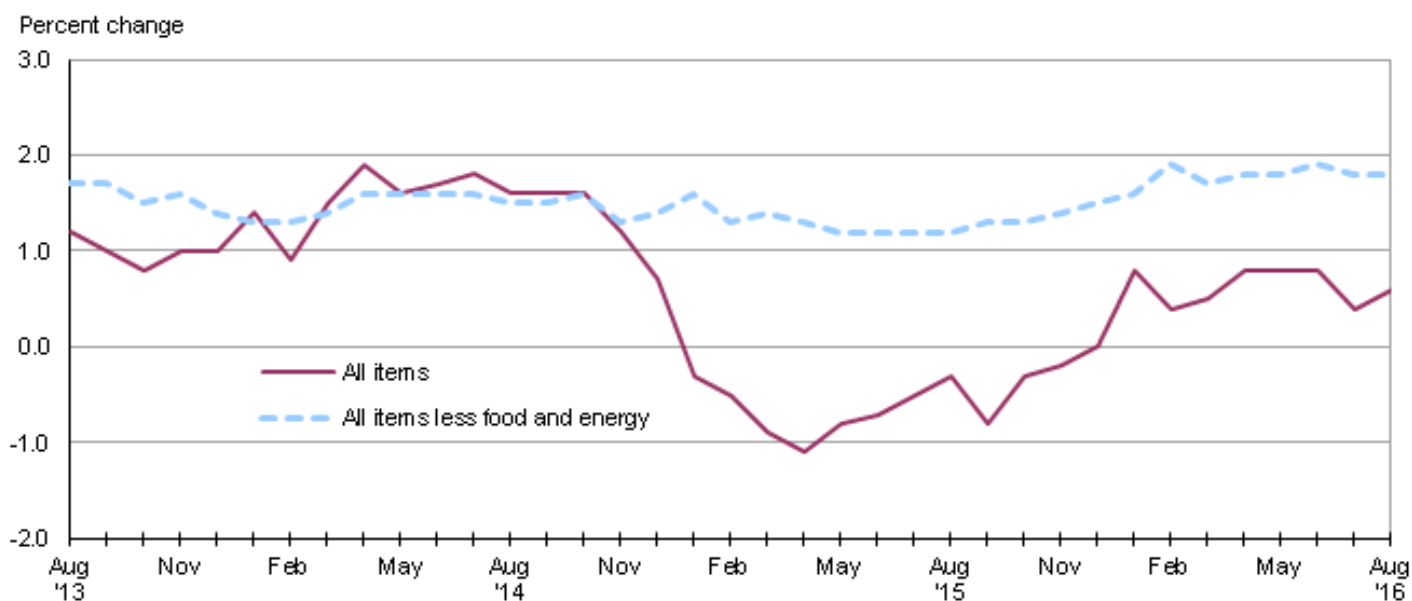
Consumer Price Index, Midwest Region – August 2016

Prices in the Midwest little changed in August, but 0.6 percent higher over the year

The Consumer Price Index for All Urban Consumers (CPI-U) in the Midwest registered little movement (0.1 percent) in August, following a 0.5-percent decline in July, the U.S. Bureau of Labor Statistics reported today. The indexes for food and energy each rose 0.2 percent, and the all items less food and energy index was little changed (0.1 percent) over the month. (Data in this report are not seasonally adjusted. Accordingly, month-to-month changes may reflect the impact of seasonal influences.)

The CPI-U for the Midwest advanced 0.6 percent from August 2015 to August 2016. (See [chart 1](#) and [table A.](#)) The energy index, which includes motor fuel and household fuels, fell 9.0 percent, and prices for food were virtually unchanged (-0.1 percent). Excluding food and energy, the CPI-U rose 1.8 percent over the year. (See [table 1.](#))

Chart 1. Over-the-year percent change in CPI-U, Midwest region, August 2013–August 2016



Source: U.S. Bureau of Labor Statistics.

Food

Food prices in the Midwest rose 0.2 percent in August. Higher costs for food at home and for food away from home, each up 0.2 percent, contributed to the monthly advance.

From August 2015 to August 2016, the index for food was little changed (-0.1 percent). Prices for food at home registered their eleventh consecutive over-the-year decrease, down 1.9 percent since August 2015. Costs for food away from home rose 2.6 percent over the year, nearly offsetting the decrease in the food at home index.

Energy

The energy index turned up 0.2 percent in August. Higher costs for utility (piped) gas service (1.5 percent) and electricity (0.4 percent) were partially offset by lower prices for motor fuel (-0.4 percent).

Despite the monthly advance, energy prices fell 9.0 percent from August 2015 to August 2016. Lower costs for motor fuel, down 17.4 percent, were largely responsible for the decline in the energy component. Prices for utility (piped) gas service and electricity, down 1.6 and 0.3 percent, respectively, also contributed to the over-the-year decline.

All items less food and energy

The index for all items less food and energy for the Midwest was little changed (0.1 percent) in August. Expenditure categories registering higher prices over the month included apparel (2.0 percent), owners' equivalent rent of residences (0.2 percent), and medical care services (0.6 percent). In contrast, new and used motor vehicles (-0.5 percent) and recreation (-0.4 percent) were among the expenditure categories posting lower prices over the month.

The index for all items less food and energy was up 1.8 percent from August 2015 to August 2016. A 2.7-percent rise in shelter costs led the advance. Prices for medical care services had the next largest upward impact with a 4.9-percent increase.

The Midwest Consumer Price Index for All Urban Consumers (CPI-U) stood at 227.101 in August 2016. A typical market basket of goods and services that cost \$100.00 in the 1982-84 base period cost \$227.10 in August 2016.

CPI-W

In August, the Midwest Consumer Price Index for Urban Wage Earners and Clerical Workers (CPI-W) was 221.406, up 0.2 percent over the month. The CPI-W increased 0.1 percent over the year.

Table A. Midwest region CPI-U 1-month and 12-month percent changes, all items index, not seasonally adjusted

Month	2012		2013		2014		2015		2016	
	1-month	12-month	1-month	12-month	1-month	12-month	1-month	12-month	1-month	12-month
January.....	0.6	2.8	0.1	1.3	0.5	1.4	-0.6	-0.3	0.3	0.8
February.....	0.2	2.7	1.1	2.2	0.6	0.9	0.3	-0.5	0.0	0.4
March.....	1.0	2.8	0.2	1.4	0.9	1.5	0.6	-0.9	0.6	0.5
April.....	0.2	2.3	-0.1	1.2	0.3	1.9	0.1	-1.1	0.4	0.8
May.....	-0.1	1.5	0.5	1.8	0.2	1.6	0.4	-0.8	0.4	0.8
June.....	-0.1	1.4	0.3	2.2	0.5	1.7	0.5	-0.7	0.6	0.8
July.....	0.0	1.3	-0.4	1.8	-0.3	1.8	0.0	-0.5	-0.5	0.4
August.....	0.7	1.8	0.1	1.2	-0.2	1.6	0.0	-0.3	0.1	0.6
September.....	0.3	1.9	0.1	1.0	0.1	1.6	-0.3	-0.8		
October.....	-0.3	2.2	-0.5	0.8	-0.5	1.6	-0.1	-0.3		
November.....	-0.4	1.8	-0.2	1.0	-0.6	1.2	-0.5	-0.2		
December.....	-0.2	1.8	-0.2	1.0	-0.7	0.7	-0.6	0.0		

The September 2016 Consumer Price Index for the Midwest region is scheduled to be released on Tuesday, October 18, 2016.

Technical Note

The Consumer Price Index (CPI) is a measure of the average change in prices over time in a fixed market basket of goods and services. The Bureau of Labor Statistics publishes CPIs for two population groups: (1) a CPI for All Urban Consumers (CPI-U) which covers approximately 89 percent of the total population and (2) a CPI for Urban Wage Earners and Clerical Workers (CPI-W) which covers approximately 28 percent of the total population. The CPI-U includes, in addition to wage earners and clerical workers, groups such as professional, managerial, and technical workers, the self-employed, short-term workers, the unemployed, and retirees and others not in the labor force.

The CPI is based on prices of food, clothing, shelter, and fuels, transportation fares, charges for doctors' and dentists' services, drugs, and the other goods and services that people buy for day-to-day living. Each month, prices are collected in 87 urban areas across the country from about 6,000 housing units and approximately 24,000 retail establishments--department stores, supermarkets, hospitals, filling stations, and other types of stores and service establishments. All taxes directly associated with the purchase and use of items are included in the index.

The index measures price changes from a designated reference date (1982-84) that equals 100.0. An increase of 16.5 percent, for example, is shown as 116.5. This change can also be expressed in dollars as follows: the price of a base period "market basket" of goods and services in the CPI has risen from \$10 in 1982-84 to

\$11.65. For further details see the CPI home page on the Internet at www.bls.gov/cpi and the BLS Handbook of Methods, Chapter 17, The Consumer Price Index, available on the Internet at www.bls.gov/opub/hom/homch17_a.htm.

In calculating the index, price changes for the various items in each location are averaged together with weights that represent their importance in the spending of the appropriate population group. Local data are then combined to obtain a U.S. city average. Because the sample size of a local area is smaller, the local area index is subject to substantially more sampling and other measurement error than the national index. In addition, local indexes are not adjusted for seasonal influences. As a result, local area indexes show greater volatility than the national index, although their long-term trends are quite similar. **NOTE: Area indexes do not measure differences in the level of prices between areas; they only measure the average change in prices for each area since the base period.**

The Midwest region is comprised of Illinois, Indiana, Iowa, Kansas, Michigan, Minnesota, Missouri, Nebraska, North Dakota, Ohio, South Dakota, and Wisconsin.

Information in this release will be made available to sensory impaired individuals upon request. Voice phone: (202) 691-5200; Federal Relay Service: (800) 877-8339.

Table 1. Consumer Price Index for All Urban Consumers (CPI-U): Indexes and percent changes for selected periods Midwest (1982-84=100 unless otherwise noted)

Item and Group	Indexes			Percent change from-		
	Jun. 2016	Jul. 2016	Aug. 2016	Aug. 2015	Jun. 2016	Jul. 2016
Expenditure category						
All Items.....	227.828	226.777	227.101	0.6	-0.3	0.1
All items (December 1977=100).....	370.689	368.980	369.506			
Food and beverages	239.963	239.675	240.178	-0.1	0.1	0.2
Food	239.478	239.193	239.736	-0.1	0.1	0.2
Food at home	226.303	225.750	226.294	-1.9	0.0	0.2
Food away from home.....	261.589	261.764	262.302	2.6	0.3	0.2
Alcoholic beverages	244.428	244.086	244.022	1.0	-0.2	0.0
Housing	217.518	217.823	218.070	1.9	0.3	0.1
Shelter	256.656	256.461	256.634	2.7	0.0	0.1
Rent of primary residence ⁽¹⁾	254.235	254.876	255.594	3.0	0.5	0.3
Owners' equiv. rent of residences ^{(1) (2)}	259.216	259.951	260.595	2.9	0.5	0.2
Owners' equiv. rent of primary residence ^{(1) (2)}	259.206	259.941	260.584	2.9	0.5	0.2
Fuels and utilities.....	217.622	221.092	222.530	0.3	2.3	0.7
Household energy	179.174	182.814	184.069	-0.8	2.7	0.7
Energy services ⁽¹⁾	187.236	191.213	192.560	-0.7	2.8	0.7
Electricity ⁽¹⁾	212.924	213.959	214.736	-0.3	0.9	0.4
Utility (piped) gas service ⁽¹⁾	133.708	142.223	144.414	-1.6	8.0	1.5
Household furnishings and operations	114.596	114.496	114.253	-1.4	-0.3	-0.2
Apparel	116.767	113.700	115.994	-0.9	-0.7	2.0
Transportation	198.807	193.405	192.636	-4.9	-3.1	-0.4
Private transportation	192.751	187.884	187.362	-5.1	-2.8	-0.3
New and used motor vehicles ⁽³⁾	99.176	98.956	98.492	-1.0	-0.7	-0.5
New vehicles	139.739	139.202	138.376	-0.3	-1.0	-0.6
New cars and trucks ^{(3) (4)}	98.802	98.363	97.776	-0.5	-1.0	-0.6
New cars ⁽⁴⁾	135.564	134.755	134.179	-0.7	-1.0	-0.4
Used cars and trucks.....	147.087	146.282	145.698	-3.8	-0.9	-0.4
Motor fuel	222.246	199.520	198.802	-17.4	-10.5	-0.4
Gasoline (all types).....	221.405	198.498	197.797	-17.4	-10.7	-0.4
Gasoline, unleaded regular ⁽⁴⁾	216.066	192.969	192.156	-18.3	-11.1	-0.4
Gasoline, Unleaded midgrade ^{(4) (5)}	253.631	229.768	230.962	-14.0	-8.9	0.5
Gasoline, unleaded premium ⁽⁴⁾	240.606	220.598	220.799	-12.4	-8.2	0.1
Medical Care	467.459	470.596	473.903	5.0	1.4	0.7
Medical care commodities.....	377.876	381.059	385.158	5.5	1.9	1.1
Medical care services.....	497.507	500.615	503.626	4.9	1.2	0.6
Professional services	406.220	405.979	408.263	4.0	0.5	0.6
Recreation ⁽³⁾	119.718	119.374	118.858	0.8	-0.7	-0.4
Education and communication ⁽³⁾	140.213	140.204	140.606	0.5	0.3	0.3
Other goods and services	409.344	408.123	408.757	1.5	-0.1	0.2
Commodity and Service Group						
All Items.....	227.828	226.777	227.101	0.6	-0.3	0.1
Commodities	177.969	175.534	175.844	-2.4	-1.2	0.2
Commodities less food & beverages.....	147.695	144.476	144.699	-3.9	-2.0	0.2
Nondurables less food & beverages	190.727	184.297	185.433	-4.6	-2.8	0.6
Nondurables less food, beverages, and apparel	239.213	230.592	230.994	-5.8	-3.4	0.2
Durables	105.710	105.093	104.623	-2.4	-1.0	-0.4
Services.....	279.260	279.621	279.960	2.5	0.3	0.1
Rent of shelter ⁽²⁾	263.726	263.511	263.698	2.8	0.0	0.1

Note: See footnotes at end of table.

Table 1. Consumer Price Index for All Urban Consumers (CPI-U): Indexes and percent changes for selected periods Midwest (1982-84=100 unless otherwise noted) - Continued

Item and Group	Indexes			Percent change from-		
	Jun. 2016	Jul. 2016	Aug. 2016	Aug. 2015	Jun. 2016	Jul. 2016
Transportation services	300.346	298.673	297.780	1.9	-0.9	-0.3
Other services	334.538	334.674	334.384	1.8	0.0	-0.1
Special aggregate indexes:						
All items less medical care	216.486	215.236	215.418	0.1	-0.5	0.1
All items less food	225.816	224.644	224.932	0.7	-0.4	0.1
All items less shelter	219.678	218.313	218.693	-0.4	-0.4	0.2
Commodities less food	150.754	147.595	147.812	-3.7	-2.0	0.1
Nondurables	215.027	211.494	212.334	-2.2	-1.3	0.4
Nondurables less food	193.554	187.465	188.534	-4.3	-2.6	0.6
Nondurables less food and apparel	238.276	230.428	230.787	-5.2	-3.1	0.2
Services less rent of shelter ⁽²⁾	312.465	313.473	313.996	2.2	0.5	0.2
Services less medical care services	262.983	263.143	263.287	2.2	0.1	0.1
Energy	198.523	190.806	191.216	-9.0	-3.7	0.2
All items less energy	233.549	233.143	233.462	1.5	0.0	0.1
All items less food and energy	233.182	232.753	233.033	1.8	-0.1	0.1
Commodities less food and energy commodities	145.483	144.519	144.849	-0.7	-0.4	0.2
Energy commodities	220.358	198.588	197.915	-16.9	-10.2	-0.3
Services less energy services	291.114	291.095	291.329	2.7	0.1	0.1

Footnotes

(1) This index series was calculated using a Laspeyres estimator. All other item stratum index series were calculated using a geometric means estimator.

(2) Index is on a December 1982=100 base.

(3) Indexes on a December 1997=100 base.

(4) Special index based on a substantially smaller sample.

(5) Indexes on a December 1993=100 base.

Regions defined as the four Census regions. Midwest includes Illinois, Indiana, Iowa, Kansas, Michigan, Minnesota, Missouri, Nebraska, North Dakota, Ohio, South Dakota, and Wisconsin.

NOTE: Index applies to a month as a whole, not to any specific date. Data not seasonally adjusted.

Table 2. Consumer Price Index for Urban Wage Earners and Clerical Workers (CPI-W): Indexes and percent changes for selected periods Midwest (1982-84=100 unless otherwise noted)

Item and Group	Indexes			Percent change from-		
	Jun. 2016	Jul. 2016	Aug. 2016	Aug. 2015	Jun. 2016	Jul. 2016
Expenditure category						
All Items.....	222.224	221.072	221.406	0.1	-0.4	0.2
All items (December 1977=100).....	359.385	357.522	358.063			
Food and beverages	239.903	239.622	240.039	-0.4	0.1	0.2
Food	239.419	239.138	239.592	-0.5	0.1	0.2
Food at home	226.964	226.461	226.865	-2.2	0.0	0.2
Food away from home.....	262.789	262.970	263.522	2.7	0.3	0.2
Alcoholic beverages	246.052	245.769	245.585	1.3	-0.2	-0.1
Housing	212.253	212.846	213.194	1.9	0.4	0.2
Shelter	245.147	245.338	245.692	2.7	0.2	0.1
Rent of primary residence ⁽¹⁾	254.852	255.497	256.212	2.9	0.5	0.3
Owners' equiv. rent of residences ^{(1) (2)}	241.628	242.309	242.886	2.9	0.5	0.2
Owners' equiv. rent of primary residence ^{(1) (2)}	241.630	242.307	242.884	2.9	0.5	0.2
Fuels and utilities.....	218.829	222.453	223.637	0.3	2.2	0.5
Household energy	180.001	183.772	184.804	-0.8	2.7	0.6
Energy services ⁽¹⁾	186.752	190.849	191.943	-0.6	2.8	0.6
Electricity ⁽¹⁾	210.695	211.939	212.352	-0.4	0.8	0.2
Utility (piped) gas service ⁽¹⁾	134.736	143.651	145.886	-1.1	8.3	1.6
Household furnishings and operations	112.782	112.444	112.115	-1.9	-0.6	-0.3
Apparel	114.069	110.484	113.349	-2.5	-0.6	2.6
Transportation	196.607	190.781	190.030	-5.9	-3.3	-0.4
Private transportation	192.941	187.372	186.723	-5.9	-3.2	-0.3
New and used motor vehicles ⁽³⁾	99.467	99.183	98.602	-1.5	-0.9	-0.6
New vehicles	143.092	142.430	141.365	-0.4	-1.2	-0.7
Used cars and trucks.....	147.690	146.849	146.249	-3.8	-1.0	-0.4
Motor fuel	222.789	199.825	199.157	-17.5	-10.6	-0.3
Gasoline (all types).....	221.815	198.700	198.059	-17.5	-10.7	-0.3
Gasoline, unleaded regular ⁽⁴⁾	216.279	193.009	192.266	-18.4	-11.1	-0.4
Gasoline, unleaded midgrade ^{(4) (5)}	253.730	229.704	230.690	-14.0	-9.1	0.4
Gasoline, unleaded premium ⁽⁴⁾	240.356	220.247	220.507	-12.5	-8.3	0.1
Medical Care	472.968	476.383	479.610	5.1	1.4	0.7
Medical care commodities.....	370.801	374.242	378.151	5.4	2.0	1.0
Medical care services.....	504.633	508.003	510.954	5.0	1.3	0.6
Professional services	408.624	408.334	410.364	4.2	0.4	0.5
Recreation ⁽³⁾	115.518	115.159	114.845	0.7	-0.6	-0.3
Education and communication ⁽³⁾	132.049	132.050	132.347	0.4	0.2	0.2
Other goods and services	456.608	455.535	456.055	1.7	-0.1	0.1
Commodity and Service Group						
All Items.....	222.224	221.072	221.406	0.1	-0.4	0.2
Commodities	180.938	177.939	178.186	-2.9	-1.5	0.1
Commodities less food & beverages.....	152.032	148.055	148.227	-4.7	-2.5	0.1
Nondurables less food & beverages	199.016	190.890	192.002	-5.7	-3.5	0.6
Nondurables less food, beverages, and apparel	251.021	240.192	240.383	-6.7	-4.2	0.1
Durables	108.071	107.350	106.834	-2.7	-1.1	-0.5
Services.....	271.281	272.060	272.495	2.4	0.4	0.2
Rent of shelter ⁽²⁾	243.545	243.725	244.090	2.8	0.2	0.1
Transportation services	299.874	299.976	299.280	2.3	-0.2	-0.2
Other services	308.960	309.153	309.081	1.6	0.0	0.0

Note: See footnotes at end of table.

Table 2. Consumer Price Index for Urban Wage Earners and Clerical Workers (CPI-W): Indexes and percent changes for selected periods Midwest (1982-84=100 unless otherwise noted) - Continued

Item and Group	Indexes			Percent change from-		
	Jun. 2016	Jul. 2016	Aug. 2016	Aug. 2015	Jun. 2016	Jul. 2016
Special aggregate indexes:						
All items less medical care	212.613	211.286	211.510	-0.3	-0.5	0.1
All items less food	218.728	217.440	217.754	0.2	-0.4	0.1
All items less shelter	216.470	214.827	215.158	-0.9	-0.6	0.2
Commodities less food	154.898	150.984	151.149	-4.5	-2.4	0.1
Nondurables	219.821	215.394	216.180	-2.9	-1.7	0.4
Nondurables less food	201.421	193.683	194.730	-5.3	-3.3	0.5
Nondurables less food and apparel	249.047	239.082	239.244	-6.1	-3.9	0.1
Services less rent of shelter ⁽²⁾	276.344	277.693	278.164	2.1	0.7	0.2
Services less medical care services	255.848	256.467	256.748	2.1	0.4	0.1
Energy	199.092	190.453	190.692	-9.7	-4.2	0.1
All items less energy	226.964	226.692	227.041	1.3	0.0	0.2
All items less food and energy	224.631	224.361	224.690	1.6	0.0	0.1
Commodities less food and energy commodities	148.736	147.598	147.893	-1.1	-0.6	0.2
Energy commodities	220.984	199.035	198.420	-17.3	-10.2	-0.3
Services less energy services	282.517	282.895	283.252	2.7	0.3	0.1

Footnotes

(1) This index series was calculated using a Laspeyres estimator. All other item stratum index series were calculated using a geometric means estimator.

(2) Index is on a December 1984=100 base.

(3) Indexes on a December 1997=100 base.

(4) Special index based on a substantially smaller sample.

(5) Indexes on a December 1993=100 base.

Regions defined as the four Census regions. Midwest includes Illinois, Indiana, Iowa, Kansas, Michigan, Minnesota, Missouri, Nebraska, North Dakota, Ohio, South Dakota, and Wisconsin.

NOTE: Index applies to a month as a whole, not to any specific date. Data not seasonally adjusted.