



For Release: Tuesday, October 18, 2016

16-2013-KAN

MOUNTAIN-PLAINS INFORMATION OFFICE: Kansas City, Mo.

Technical information: (816) 285-7000 BLSInfoKansasCity@bls.gov www.bls.gov/regions/mountain-plains

Media contact: (816) 285-7000

ERRATA

Incorrect prices for prescription drugs were used for the CPI-U and CPI-W indexes from May through August 2016 in a number of areas. Several indexes were affected, including the all items and medical care indexes. A list of the series affected can be found at www.bls.gov/bls/errata/cpi-price-corrections-10182016.htm, and the corrected data are available in the CPI database (www.bls.gov/cpi/data.htm).

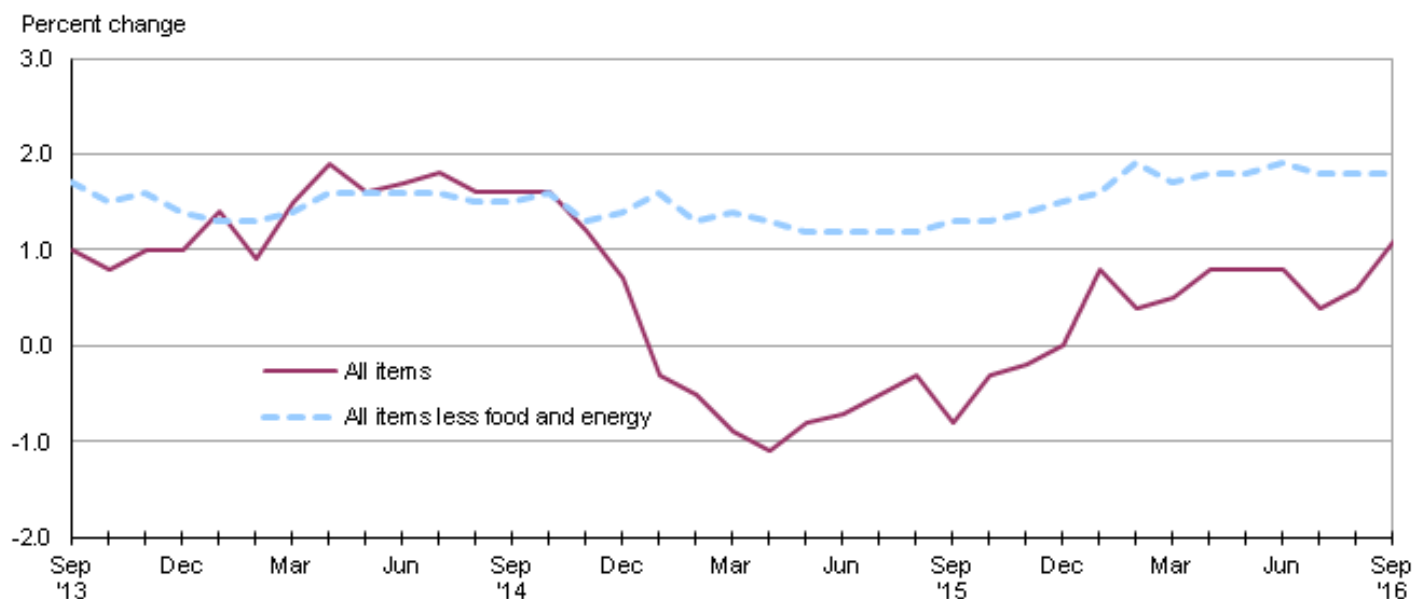
Consumer Price Index, Midwest Region – September 2016

Prices in the Midwest up 0.2 percent in September and 1.1 percent higher over the year

The Consumer Price Index for All Urban Consumers (CPI-U) in the Midwest rose 0.2 percent in September, the U.S. Bureau of Labor Statistics reported today. The monthly increase was largely attributable to a 0.3-percent advance in the all items less food and energy index. Energy costs were 0.2 percent higher while food prices were unchanged over the month. (Data in this report are not seasonally adjusted. Accordingly, month-to-month changes may reflect the impact of seasonal influences.)

The CPI-U for the Midwest advanced 1.1 percent from September 2015 to September 2016. (See [chart 1](#) and [table A](#).) Food prices declined 0.5 percent, and the energy index, which includes motor fuel and household fuels, fell 2.5 percent. Excluding food and energy, the CPI-U rose 1.8 percent over the year. (See [table 1](#).)

Chart 1. Over-the-year percent change in CPI-U, Midwest region, September 2013–September 2016



Source: U.S. Bureau of Labor Statistics.

Food

Food prices in the Midwest were unchanged in September. The index for food at home registered little movement (-0.1 percent) while costs for food away from home rose 0.2 percent.

From September 2015 to September 2016, the index for food decreased 0.5 percent. Prices for food at home registered their twelfth consecutive over-the-year decrease, down 2.5 percent, and recorded their largest over-the-year decline since publication began in 1977. Costs for food away from home rose 2.5 percent over the year.

Energy

The energy index increased 0.2 percent in September. Higher costs for motor fuel (0.6 percent) and utility (piped) gas service (1.2 percent) were partially offset by lower prices for electricity (-0.8 percent)

Despite the monthly advance, energy prices declined 2.5 percent from September 2015 to September 2016. Lower costs for motor fuel, down 6.9 percent, were largely responsible for the decline in the energy component. Prices for electricity and utility (piped) gas service, up 1.8 and 1.4 percent, respectively, moderated the over-the-year decline.

All items less food and energy

The index for all items less food and energy for the Midwest advanced 0.3 percent in September and had the largest upward impact on the all items index. Expenditure categories registering higher prices over the month included shelter (0.5 percent) and apparel (2.5 percent). In contrast, used cars and trucks (-1.7 percent) and household furnishings and operations (-0.3 percent) were among the expenditure categories posting lower prices over the month.

The index for all items less food and energy was up 1.8 percent from September 2015 to September 2016. A 3.0-percent rise in shelter costs led the advance. Prices for medical care services had the next largest upward impact with a 4.8-percent increase.

The Midwest Consumer Price Index for All Urban Consumers (CPI-U) stood at 227.636 in September 2016. A typical market basket of goods and services that cost \$100.00 in the 1982-84 base period cost \$227.64 in September 2016.

CPI-W

In September, the Midwest Consumer Price Index for Urban Wage Earners and Clerical Workers (CPI-W) was 221.759, up 0.2 percent over the month. The CPI-W increased 0.7 percent over the year.

Table A. Midwest region CPI-U 1-month and 12-month percent changes, all items index, not seasonally adjusted

Month	2012		2013		2014		2015		2016	
	1-month	12-month	1-month	12-month	1-month	12-month	1-month	12-month	1-month	12-month
January.....	0.6	2.8	0.1	1.3	0.5	1.4	-0.6	-0.3	0.3	0.8
February.....	0.2	2.7	1.1	2.2	0.6	0.9	0.3	-0.5	0.0	0.4
March.....	1.0	2.8	0.2	1.4	0.9	1.5	0.6	-0.9	0.6	0.5
April.....	0.2	2.3	-0.1	1.2	0.3	1.9	0.1	-1.1	0.4	0.8
May.....	-0.1	1.5	0.5	1.8	0.2	1.6	0.4	-0.8	0.4	0.8
June.....	-0.1	1.4	0.3	2.2	0.5	1.7	0.5	-0.7	0.6	0.8
July.....	0.0	1.3	-0.4	1.8	-0.3	1.8	0.0	-0.5	-0.5	0.4
August.....	0.7	1.8	0.1	1.2	-0.2	1.6	0.0	-0.3	0.1	0.6

Table A. Midwest region CPI-U 1-month and 12-month percent changes, all items index, not seasonally adjusted - Continued

Month	2012		2013		2014		2015		2016	
	1-month	12-month	1-month	12-month	1-month	12-month	1-month	12-month	1-month	12-month
September	0.3	1.9	0.1	1.0	0.1	1.6	-0.3	-0.8	0.2	1.1
October	-0.3	2.2	-0.5	0.8	-0.5	1.6	-0.1	-0.3		
November	-0.4	1.8	-0.2	1.0	-0.6	1.2	-0.5	-0.2		
December	-0.2	1.8	-0.2	1.0	-0.7	0.7	-0.6	0.0		

The October 2016 Consumer Price Index for the Midwest region is scheduled to be released on Thursday, November 17, 2016.

Technical Note

The Consumer Price Index (CPI) is a measure of the average change in prices over time in a fixed market basket of goods and services. The Bureau of Labor Statistics publishes CPIs for two population groups: (1) a CPI for All Urban Consumers (CPI-U) which covers approximately 89 percent of the total population and (2) a CPI for Urban Wage Earners and Clerical Workers (CPI-W) which covers approximately 28 percent of the total population. The CPI-U includes, in addition to wage earners and clerical workers, groups such as professional, managerial, and technical workers, the self-employed, short-term workers, the unemployed, and retirees and others not in the labor force.

The CPI is based on prices of food, clothing, shelter, and fuels, transportation fares, charges for doctors' and dentists' services, drugs, and the other goods and services that people buy for day-to-day living. Each month, prices are collected in 87 urban areas across the country from about 6,000 housing units and approximately 24,000 retail establishments--department stores, supermarkets, hospitals, filling stations, and other types of stores and service establishments. All taxes directly associated with the purchase and use of items are included in the index.

The index measures price changes from a designated reference date (1982-84) that equals 100.0. An increase of 16.5 percent, for example, is shown as 116.5. This change can also be expressed in dollars as follows: the price of a base period "market basket" of goods and services in the CPI has risen from \$10 in 1982-84 to \$11.65. For further details see the CPI home page on the Internet at www.bls.gov/cpi and the BLS Handbook of Methods, Chapter 17, The Consumer Price Index, available on the Internet at www.bls.gov/opub/hom/homch17_a.htm.

In calculating the index, price changes for the various items in each location are averaged together with weights that represent their importance in the spending of the appropriate population group. Local data are then combined to obtain a U.S. city average. Because the sample size of a local area is smaller, the local area index is subject to substantially more sampling and other measurement error than the national index. In addition, local indexes are not adjusted for seasonal influences. As a result, local area indexes show greater volatility than the national index, although their long-term trends are quite similar. **NOTE: Area indexes do not measure differences in the level of prices between areas; they only measure the average change in prices for each area since the base period.**

The Midwest region is comprised of Illinois, Indiana, Iowa, Kansas, Michigan, Minnesota, Missouri, Nebraska, North Dakota, Ohio, South Dakota, and Wisconsin.

Information in this release will be made available to sensory impaired individuals upon request. Voice phone: (202) 691-5200; Federal Relay Service: (800) 877-8339.

Table 1. Consumer Price Index for All Urban Consumers (CPI-U): Indexes and percent changes for selected periods Midwest (1982-84=100 unless otherwise noted)

Item and Group	Indexes			Percent change from-		
	Jul. 2016	Aug. 2016	Sep. 2016	Sep. 2015	Jul. 2016	Aug. 2016
Expenditure category						
All Items.....	(r) 226.786	(r) 227.097	227.636	1.1	(r) 0.4	(r) 0.2
All items (December 1977=100).....	(r) 368.994	(r) 369.500	370.376			
Food and beverages	239.675	240.178	240.247	-0.5	0.2	0.0
Food	239.193	239.736	239.803	-0.5	0.3	0.0
Food at home	225.750	226.294	226.091	-2.5	0.2	-0.1
Food away from home.....	261.764	262.302	262.834	2.5	0.4	0.2
Alcoholic beverages	244.086	244.022	244.116	0.7	0.0	0.0
Housing	217.823	218.070	218.816	2.3	0.5	0.3
Shelter	256.461	256.634	257.954	3.0	0.6	0.5
Rent of primary residence ⁽¹⁾	254.876	255.594	256.240	2.9	0.5	0.3
Owners' equiv. rent of residences ^{(1) (2)}	259.951	260.595	261.237	2.9	0.5	0.2
Owners' equiv. rent of primary residence ^{(1) (2)}	259.941	260.584	261.227	2.9	0.5	0.2
Fuels and utilities.....	221.092	222.530	222.299	2.2	0.5	-0.1
Household energy	182.814	184.069	183.727	1.6	0.5	-0.2
Energy services ⁽¹⁾	191.213	192.560	192.177	1.6	0.5	-0.2
Electricity ⁽¹⁾	213.959	214.736	213.025	1.8	-0.4	-0.8
Utility (piped) gas service ⁽¹⁾	142.223	144.414	146.215	1.4	2.8	1.2
Household furnishings and operations	114.496	114.253	113.880	-2.0	-0.5	-0.3
Apparel	113.700	115.994	118.904	-2.2	4.6	2.5
Transportation	193.405	192.636	192.363	-1.8	-0.5	-0.1
Private transportation	187.884	187.362	186.994	-1.9	-0.5	-0.2
New and used motor vehicles ⁽³⁾	98.956	98.492	97.673	-1.3	-1.3	-0.8
New vehicles	139.202	138.376	138.399	-0.3	-0.6	0.0
New cars and trucks ^{(3) (4)}	98.363	97.776	97.819	-0.6	-0.6	0.0
New cars ⁽⁴⁾	134.755	134.179	134.235	-1.0	-0.4	0.0
Used cars and trucks.....	146.282	145.698	143.225	-3.9	-2.1	-1.7
Motor fuel	199.520	198.802	200.085	-6.9	0.3	0.6
Gasoline (all types).....	198.498	197.797	199.049	-6.8	0.3	0.6
Gasoline, unleaded regular ⁽⁴⁾	192.969	192.156	193.392	-7.3	0.2	0.6
Gasoline, Unleaded midgrade ^{(4) (5)}	229.768	230.962	230.799	-5.5	0.4	-0.1
Gasoline, unleaded premium ⁽⁴⁾	220.598	220.799	222.432	-4.1	0.8	0.7
Medical Care	(r) 470.786	(r) 473.820	474.779	5.1	(r) 0.8	(r) 0.2
Medical care commodities.....	(r) 381.725	(r) 384.871	385.764	6.1	(r) 1.1	(r) 0.2
Medical care services.....	(r) 500.634	(r) 503.616	504.595	4.8	(r) 0.8	(r) 0.2
Professional services	405.979	408.263	408.037	3.6	0.5	-0.1
Recreation ⁽³⁾	119.374	118.858	119.023	0.9	-0.3	0.1
Education and communication ⁽³⁾	140.204	140.606	140.582	0.1	0.3	0.0
Other goods and services	408.123	408.757	410.438	2.1	0.6	0.4
Commodity and Service Group						
All Items.....	(r) 226.786	(r) 227.097	227.636	1.1	(r) 0.4	(r) 0.2
Commodities	(r) 175.550	(r) 175.837	176.146	-1.5	(r) 0.3	(r) 0.2
Commodities less food & beverages.....	(r) 144.497	(r) 144.689	145.084	-2.3	(r) 0.4	(r) 0.3
Nondurables less food & beverages	(r) 184.346	(r) 185.412	186.888	-1.6	(r) 1.4	(r) 0.8
Nondurables less food, beverages, and apparel	(r) 230.673	(r) 230.959	231.527	-1.4	(r) 0.4	(r) 0.2
Durables	105.093	104.623	104.189	-2.7	-0.9	-0.4
Services.....	(r) 279.622	(r) 279.959	280.733	2.8	(r) 0.4	(r) 0.3
Rent of shelter ⁽²⁾	263.511	263.698	265.074	3.1	0.6	0.5

Note: See footnotes at end of table.

Table 1. Consumer Price Index for All Urban Consumers (CPI-U): Indexes and percent changes for selected periods Midwest (1982-84=100 unless otherwise noted) - Continued

Item and Group	Indexes			Percent change from-		
	Jul. 2016	Aug. 2016	Sep. 2016	Sep. 2015	Jul. 2016	Aug. 2016
Transportation services	298.673	297.780	297.836	2.3	-0.3	0.0
Other services	334.674	334.384	334.526	1.7	0.0	0.0
Special aggregate indexes:						
All items less medical care	215.236	215.418	215.936	0.7	0.3	0.2
All items less food	(r) 224.654	(r) 224.928	225.541	1.4	(r) 0.4	(r) 0.3
All items less shelter	(r) 218.325	(r) 218.688	218.953	0.3	(r) 0.3	(r) 0.1
Commodities less food	(r) 147.616	(r) 147.803	148.192	-2.1	(r) 0.4	(r) 0.3
Nondurables	(r) 211.520	(r) 212.323	213.135	-1.0	(r) 0.8	(r) 0.4
Nondurables less food	(r) 187.512	(r) 188.515	189.914	-1.5	(r) 1.3	(r) 0.7
Nondurables less food and apparel	(r) 230.501	(r) 230.756	231.279	-1.3	(r) 0.3	(r) 0.2
Services less rent of shelter ⁽²⁾	(r) 313.476	(r) 313.995	314.159	2.5	(r) 0.2	(r) 0.1
Services less medical care services	263.143	263.287	264.045	2.5	0.3	0.3
Energy	190.806	191.216	191.573	-2.5	0.4	0.2
All items less energy	(r) 233.153	(r) 233.458	234.021	1.4	(r) 0.4	(r) 0.2
All items less food and energy	(r) 232.765	(r) 233.028	233.682	1.8	(r) 0.4	(r) 0.3
Commodities less food and energy commodities	(r) 144.543	(r) 144.838	145.132	-1.1	(r) 0.4	(r) 0.2
Energy commodities	198.588	197.915	199.157	-6.7	0.3	0.6
Services less energy services	(r) 291.096	(r) 291.328	292.231	2.9	(r) 0.4	(r) 0.3

Footnotes

(1) This index series was calculated using a Laspeyres estimator. All other item stratum index series were calculated using a geometric means estimator.

(2) Index is on a December 1982=100 base.

(3) Indexes on a December 1997=100 base.

(4) Special index based on a substantially smaller sample.

(5) Indexes on a December 1993=100 base.

(R) Revised

Regions defined as the four Census regions. Midwest includes Illinois, Indiana, Iowa, Kansas, Michigan, Minnesota, Missouri, Nebraska, North Dakota, Ohio, South Dakota, and Wisconsin.

NOTE: Index applies to a month as a whole, not to any specific date. Data not seasonally adjusted.

Table 2. Consumer Price Index for Urban Wage Earners and Clerical Workers (CPI-W): Indexes and percent changes for selected periods Midwest (1982-84=100 unless otherwise noted)

Item and Group	Indexes			Percent change from-		
	Jul. 2016	Aug. 2016	Sep. 2016	Sep. 2015	Jul. 2016	Aug. 2016
Expenditure category						
All Items.....	(r) 221.079	(r) 221.405	221.759	0.7	(r) 0.3	(r) 0.2
All items (December 1977=100).....	(r) 357.534	(r) 358.061	358.634			
Food and beverages	239.622	240.039	240.002	-0.8	0.2	0.0
Food	239.138	239.592	239.543	-0.9	0.2	0.0
Food at home	226.461	226.865	226.614	-2.8	0.1	-0.1
Food away from home.....	262.970	263.522	263.890	2.4	0.3	0.1
Alcoholic beverages	245.769	245.585	245.743	1.0	0.0	0.1
Housing	212.846	213.194	213.826	2.3	0.5	0.3
Shelter	245.338	245.692	246.723	2.9	0.6	0.4
Rent of primary residence ⁽¹⁾	255.497	256.212	256.848	2.9	0.5	0.2
Owners' equiv. rent of residences ^{(1) (2)}	242.309	242.886	243.480	2.8	0.5	0.2
Owners' equiv. rent of primary residence ^{(1) (2)}	242.307	242.884	243.480	2.8	0.5	0.2
Fuels and utilities.....	222.453	223.637	223.468	2.3	0.5	-0.1
Household energy	183.772	184.804	184.524	1.7	0.4	-0.2
Energy services ⁽¹⁾	190.849	191.943	191.630	1.8	0.4	-0.2
Electricity ⁽¹⁾	211.939	212.352	210.715	1.7	-0.6	-0.8
Utility (piped) gas service ⁽¹⁾	143.651	145.886	147.924	2.2	3.0	1.4
Household furnishings and operations	112.444	112.115	111.992	-2.4	-0.4	-0.1
Apparel	110.484	113.349	116.399	-3.0	5.4	2.7
Transportation	190.781	190.030	189.608	-2.4	-0.6	-0.2
Private transportation	187.372	186.723	186.252	-2.5	-0.6	-0.3
New and used motor vehicles ⁽³⁾	99.183	98.602	97.619	-1.8	-1.6	-1.0
New vehicles	142.430	141.365	141.496	-0.5	-0.7	0.1
Used cars and trucks.....	146.849	146.249	143.773	-3.9	-2.1	-1.7
Motor fuel	199.825	199.157	200.563	-7.0	0.4	0.7
Gasoline (all types).....	198.700	198.059	199.424	-6.9	0.4	0.7
Gasoline, unleaded regular ⁽⁴⁾	193.009	192.266	193.623	-7.4	0.3	0.7
Gasoline, unleaded midgrade ^{(4) (5)}	229.704	230.690	230.674	-5.5	0.4	0.0
Gasoline, unleaded premium ⁽⁴⁾	220.247	220.507	222.217	-4.2	0.9	0.8
Medical Care	(r) 476.586	(r) 479.571	480.496	5.2	(r) 0.8	(r) 0.2
Medical care commodities.....	(r) 374.933	(r) 378.024	378.360	5.9	(r) 0.9	(r) 0.1
Medical care services.....	(r) 508.030	(r) 510.947	512.073	5.0	(r) 0.8	(r) 0.2
Professional services	408.334	410.364	410.145	3.8	0.4	-0.1
Recreation ⁽³⁾	115.159	114.845	114.723	0.5	-0.4	-0.1
Education and communication ⁽³⁾	132.050	132.347	132.169	0.0	0.1	-0.1
Other goods and services	455.535	456.055	457.557	2.2	0.4	0.3
Commodity and Service Group						
All Items.....	(r) 221.079	(r) 221.405	221.759	0.7	(r) 0.3	(r) 0.2
Commodities	(r) 177.952	(r) 178.183	178.374	-1.8	(r) 0.2	(r) 0.1
Commodities less food & beverages.....	(r) 148.074	(r) 148.224	148.499	-2.6	(r) 0.3	(r) 0.2
Nondurables less food & beverages	(r) 190.932	(r) 191.994	193.489	-2.0	(r) 1.3	(r) 0.8
Nondurables less food, beverages, and apparel	(r) 240.257	(r) 240.371	241.066	-1.8	(r) 0.3	(r) 0.3
Durables	107.350	106.834	106.210	-3.0	-1.1	-0.6
Services.....	(r) 272.061	(r) 272.495	273.031	2.7	(r) 0.4	(r) 0.2
Rent of shelter ⁽²⁾	243.725	244.090	245.126	2.9	0.6	0.4
Transportation services	299.976	299.280	299.402	2.8	-0.2	0.0
Other services	309.153	309.081	308.657	1.4	-0.2	-0.1

Note: See footnotes at end of table.

Table 2. Consumer Price Index for Urban Wage Earners and Clerical Workers (CPI-W): Indexes and percent changes for selected periods Midwest (1982-84=100 unless otherwise noted) - Continued

Item and Group	Indexes			Percent change from-		
	Jul. 2016	Aug. 2016	Sep. 2016	Sep. 2015	Jul. 2016	Aug. 2016
Special aggregate indexes:						
All items less medical care	211.286	211.510	211.842	0.4	0.3	0.2
All items less food	(r) 217.449	(r) 217.752	218.171	1.0	(r) 0.3	(r) 0.2
All items less shelter	(r) 214.837	(r) 215.156	215.273	-0.1	(r) 0.2	(r) 0.1
Commodities less food	(r) 151.002	(r) 151.146	151.419	-2.5	(r) 0.3	(r) 0.2
Nondurables	(r) 215.416	(r) 216.176	216.948	-1.3	(r) 0.7	(r) 0.4
Nondurables less food	(r) 193.722	(r) 194.723	196.152	-1.8	(r) 1.3	(r) 0.7
Nondurables less food and apparel	(r) 239.142	(r) 239.233	239.883	-1.6	(r) 0.3	(r) 0.3
Services less rent of shelter ⁽²⁾	(r) 277.697	(r) 278.164	278.117	2.4	(r) 0.2	(r) 0.0
Services less medical care services	256.467	256.748	257.246	2.4	0.3	0.2
Energy	190.453	190.692	191.195	-2.8	0.4	0.3
All items less energy	(r) 226.700	(r) 227.039	227.379	1.2	(r) 0.3	(r) 0.1
All items less food and energy	(r) 224.371	(r) 224.689	225.101	1.6	(r) 0.3	(r) 0.2
Commodities less food and energy commodities	(r) 147.620	(r) 147.889	147.998	-1.4	(r) 0.3	(r) 0.1
Energy commodities	199.035	198.420	199.773	-7.0	0.4	0.7
Services less energy services	(r) 282.897	(r) 283.252	283.893	2.8	(r) 0.4	(r) 0.2

Footnotes

(1) This index series was calculated using a Laspeyres estimator. All other item stratum index series were calculated using a geometric means estimator.

(2) Index is on a December 1984=100 base.

(3) Indexes on a December 1997=100 base.

(4) Special index based on a substantially smaller sample.

(5) Indexes on a December 1993=100 base.

(R) Revised

Regions defined as the four Census regions. Midwest includes Illinois, Indiana, Iowa, Kansas, Michigan, Minnesota, Missouri, Nebraska, North Dakota, Ohio, South Dakota, and Wisconsin.

NOTE: Index applies to a month as a whole, not to any specific date. Data not seasonally adjusted.