



For Release: Wednesday, February 15, 2017

17-232-KAN

MOUNTAIN-PLAINS INFORMATION OFFICE: Kansas City, Mo.

Technical information: (816) 285-7000 BLSInfoKansasCity@bls.gov www.bls.gov/regions/mountain-plains

Media contact: (816) 285-7000

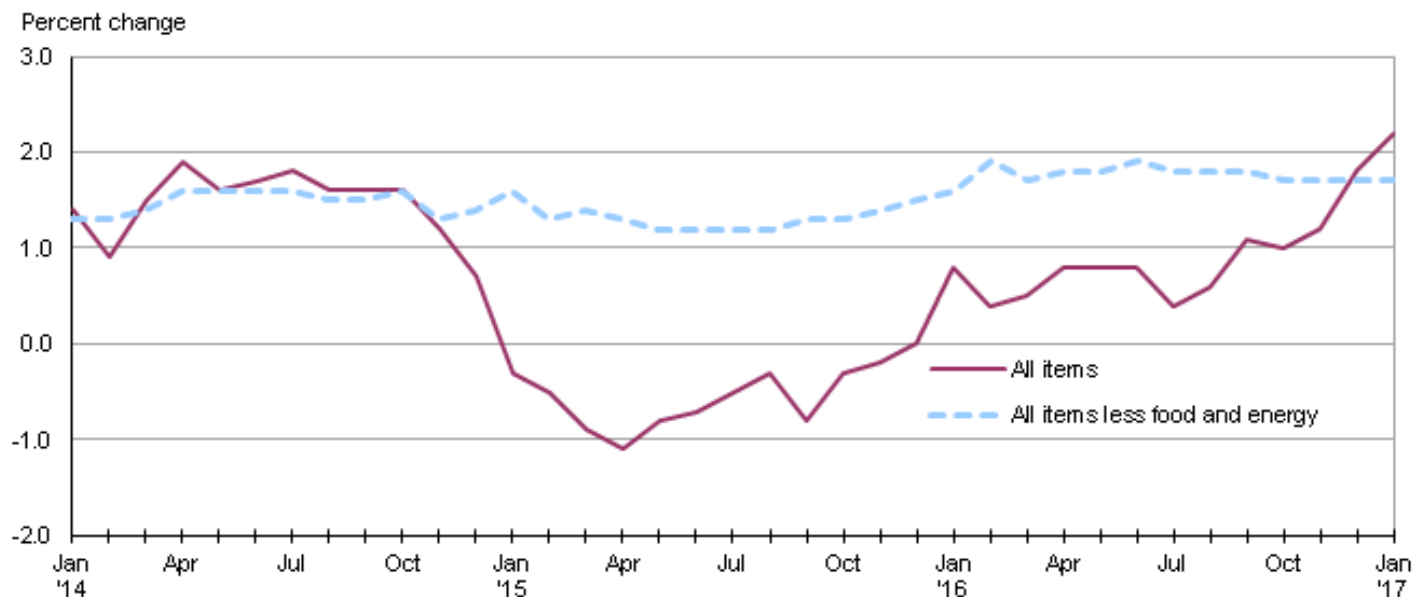
Consumer Price Index, Midwest Region – January 2017

Prices in the Midwest up 0.7 percent in January, and 2.2 percent higher over the year

The Consumer Price Index for All Urban Consumers (CPI-U) in the Midwest rose 0.7 percent in January, the U.S. Bureau of Labor Statistics reported today. The monthly advance was led by increases in the indexes for motor fuel (6.1 percent) and shelter (0.5 percent). The broader energy index was up 4.1 percent, while food prices rose 0.2 percent. The all items less food and energy, which includes shelter, increased 0.4 percent over the month. (Data in this report are not seasonally adjusted. Accordingly, month-to-month changes may reflect the impact of seasonal influences.)

The CPI-U for the Midwest rose 2.2 percent from January 2016 to January 2017, the largest over-the-year increase since June 2013. (See [chart 1](#) and [table A](#).) The energy index, which includes motor fuel and household fuels, was up 14.4 percent, but food prices decreased 0.6 percent. Excluding food and energy, the CPI-U advanced 1.7 percent over the year. (See [table 1](#).)

Chart 1. Over-the-year percent change in CPI-U, Midwest region, January 2014–January 2017



Source: U.S. Bureau of Labor Statistics.

Food

Food prices in the Midwest rose 0.2 percent in January. The index for food at home was 0.4 percent higher, while costs for food away from home were unchanged over the month.

From January 2016 to January 2017, the index for food decreased 0.6 percent. Prices for food at home registered their sixteenth consecutive over-the-year decrease, down 2.4 percent. Costs for food away from home rose 2.2 percent over the year.

Energy

The energy index rose 4.1 percent in January following an increase of 2.7 percent in December. Higher motor fuel prices were largely responsible for both increases, up 6.1 percent in January after registering a 6.0-percent advance in the prior month. Also contributing to the rise in the energy component, costs for utility (piped) gas service and electricity increased 4.7 and 1.3 percent, respectively, over the month.

Energy costs advanced 14.4 percent from January 2016 to January 2017. Motor fuel prices jumped 28.3 percent over the year, the largest 12-month gain since September 2011. Costs for utility (piped) gas service increased 12.4 percent and prices for electricity were up 0.4 percent over the year.

All items less food and energy

The index for all items less food and energy for the Midwest rose 0.4 percent in January. Expenditure categories registering higher prices over the month included shelter (0.5 percent), recreation (0.7 percent), and medical care commodities (1.1 percent).

The index for all items less food and energy was up 1.7 percent from January 2016 to January 2017. Higher costs for shelter (2.7 percent) and medical care services (4.1 percent) led the advance.

The Midwest Consumer Price Index for All Urban Consumers (CPI-U) stood at 228.279 in January 2017. A typical market basket of goods and services that cost \$100.00 in the 1982-84 base period cost \$228.28 in January 2017.

CPI-W

In January, the Midwest Consumer Price Index for Urban Wage Earners and Clerical Workers (CPI-W) was 222.428, up 0.7 percent over the month. The CPI-W increased 2.3 percent over the year.

Table A. Midwest region CPI-U 1-month and 12-month percent changes, all items index, not seasonally adjusted

Month	2013		2014		2015		2016		2017	
	1-month	12-month	1-month	12-month	1-month	12-month	1-month	12-month	1-month	12-month
January.....	0.1	1.3	0.5	1.4	-0.6	-0.3	0.3	0.8	0.7	2.2
February.....	1.1	2.2	0.6	0.9	0.3	-0.5	0.0	0.4		
March.....	0.2	1.4	0.9	1.5	0.6	-0.9	0.6	0.5		
April.....	-0.1	1.2	0.3	1.9	0.1	-1.1	0.4	0.8		
May.....	0.5	1.8	0.2	1.6	0.4	-0.8	0.4	0.8		
June.....	0.3	2.2	0.5	1.7	0.5	-0.7	0.6	0.8		
July.....	-0.4	1.8	-0.3	1.8	0.0	-0.5	-0.5	0.4		
August.....	0.1	1.2	-0.2	1.6	0.0	-0.3	0.1	0.6		
September.....	0.1	1.0	0.1	1.6	-0.3	-0.8	0.2	1.1		
October.....	-0.5	0.8	-0.5	1.6	-0.1	-0.3	-0.1	1.0		
November.....	-0.2	1.0	-0.6	1.2	-0.5	-0.2	-0.3	1.2		
December.....	-0.2	1.0	-0.7	0.7	-0.6	0.0	0.1	1.8		

The February 2017 Consumer Price Index for the Midwest region is scheduled to be released on Wednesday, March 15, 2017.

Technical Note

The Consumer Price Index (CPI) is a measure of the average change in prices over time in a fixed market basket of goods and services. The Bureau of Labor Statistics publishes CPIs for two population groups: (1) a CPI for All Urban Consumers (CPI-U) which covers approximately 89 percent of the total population and (2) a CPI for Urban Wage Earners and Clerical Workers (CPI-W) which covers approximately 28 percent of the total population. The CPI-U includes, in addition to wage earners and clerical workers, groups such as professional, managerial, and technical workers, the self-employed, short-term workers, the unemployed, and retirees and others not in the labor force.

The CPI is based on prices of food, clothing, shelter, and fuels, transportation fares, charges for doctors' and dentists' services, drugs, and the other goods and services that people buy for day-to-day living. Each month, prices are collected in 87 urban areas across the country from about 6,000 housing units and approximately 24,000 retail establishments--department stores, supermarkets, hospitals, filling stations, and other types of stores and service establishments. All taxes directly associated with the purchase and use of items are included in the index.

The index measures price changes from a designated reference date (1982-84) that equals 100.0. An increase of 16.5 percent, for example, is shown as 116.5. This change can also be expressed in dollars as follows: the price of a base period "market basket" of goods and services in the CPI has risen from \$10 in 1982-84 to \$11.65. For further details see the CPI home page on the Internet at www.bls.gov/cpi and the BLS Handbook of Methods, Chapter 17, The Consumer Price Index, available on the Internet at www.bls.gov/opub/hom/homch17_a.htm.

In calculating the index, price changes for the various items in each location are averaged together with weights that represent their importance in the spending of the appropriate population group. Local data are then combined to obtain a U.S. city average. Because the sample size of a local area is smaller, the local area index is subject to substantially more sampling and other measurement error than the national index. In addition, local indexes are not adjusted for seasonal influences. As a result, local area indexes show greater volatility than the national index, although their long-term trends are quite similar. **NOTE: Area indexes do not measure differences in the level of prices between areas; they only measure the average change in prices for each area since the base period.**

The Midwest region is comprised of Illinois, Indiana, Iowa, Kansas, Michigan, Minnesota, Missouri, Nebraska, North Dakota, Ohio, South Dakota, and Wisconsin.

Information in this release will be made available to sensory impaired individuals upon request. Voice phone: (202) 691-5200; Federal Relay Service: (800) 877-8339.

Table 1. Consumer Price Index for All Urban Consumers (CPI-U): Indexes and percent changes for selected periods Midwest (1982-84=100 unless otherwise noted)

Item and Group	Indexes			Percent change from-		
	Nov. 2016	Dec. 2016	Jan. 2017	Jan. 2016	Nov. 2016	Dec. 2016
Expenditure category						
All Items.....	226.673	226.794	228.279	2.2	0.7	0.7
All items (December 1977=100).....	368.810	369.006	371.422			
Food and beverages	239.741	239.494	240.077	-0.5	0.1	0.2
Food	239.266	238.923	239.464	-0.6	0.1	0.2
Food at home	224.801	224.151	225.083	-2.4	0.1	0.4
Food away from home.....	263.583	263.767	263.637	2.2	0.0	0.0
Alcoholic beverages	244.058	245.204	246.391	1.3	1.0	0.5
Housing	217.903	217.867	219.369	2.5	0.7	0.7
Shelter	258.337	258.348	259.528	2.7	0.5	0.5
Rent of primary residence(1).....	257.599	258.228	258.736	2.9	0.4	0.2
Owners' equiv. rent of residences(1)(2).....	262.476	263.042	263.522	2.9	0.4	0.2
Owners' equiv. rent of primary residence(1)(2).....	262.463	263.028	263.506	2.9	0.4	0.2
Fuels and utilities.....	214.152	214.249	218.703	4.4	2.1	2.1
Household energy	175.203	175.144	179.422	4.3	2.4	2.4
Energy services(1)	182.653	182.197	186.608	4.0	2.2	2.4
Electricity(1).....	196.587	196.059	198.684	0.4	1.1	1.3
Utility (piped) gas service(1).....	148.536	148.229	155.269	12.4	4.5	4.7
Household furnishings and operations.....	113.379	113.109	113.896	-0.8	0.5	0.7
Apparel	118.575	113.436	113.754	-1.2	-4.1	0.3
Transportation	189.630	192.164	195.395	5.4	3.0	1.7
Private transportation	184.199	186.910	190.013	5.8	3.2	1.7
New and used motor vehicles(3).....	96.534	96.626	96.984	-1.6	0.5	0.4
New vehicles	138.778	138.938	140.162	-0.6	1.0	0.9
New cars and trucks(3)(4).....	98.149	98.261	98.999	-0.8	0.9	0.8
New cars(4).....	135.129	134.687	136.756	-0.4	1.2	1.5
Used cars and trucks.....	138.451	138.152	138.051	-3.4	-0.3	-0.1
Motor fuel	188.560	199.912	212.034	28.3	12.4	6.1
Gasoline (all types).....	187.382	198.809	210.904	28.4	12.6	6.1
Gasoline, unleaded regular(4).....	181.479	192.964	204.966	29.2	12.9	6.2
Gasoline, Unleaded midgrade(4)(5).....	219.491	232.281	246.015	27.0	12.1	5.9
Gasoline, unleaded premium(4).....	213.638	223.666	234.328	23.7	9.7	4.8
Medical Care	477.271	477.476	479.115	4.0	0.4	0.3
Medical care commodities.....	381.666	382.672	386.773	3.9	1.3	1.1
Medical care services.....	509.428	509.346	510.100	4.1	0.1	0.1
Professional services	413.224	412.901	413.960	3.8	0.2	0.3
Recreation(3).....	118.505	117.984	118.860	1.6	0.3	0.7
Education and communication(3).....	140.313	140.552	140.444	-0.2	0.1	-0.1
Other goods and services	410.145	412.612	412.612	2.1	0.6	0.0
Commodity and Service Group						
All Items.....	226.673	226.794	228.279	2.2	0.7	0.7
Commodities	174.471	174.645	176.159	1.4	1.0	0.9
Commodities less food & beverages.....	142.994	143.331	145.170	2.7	1.5	1.3
Nondurables less food & beverages	183.686	184.435	187.971	6.6	2.3	1.9
Nondurables less food, beverages, and apparel	226.466	230.989	236.605	9.2	4.5	2.4
Durables	103.066	103.073	103.529	-2.1	0.4	0.4
Services.....	280.495	280.562	282.021	2.8	0.5	0.5
Rent of shelter(2).....	265.471	265.482	266.708	2.7	0.5	0.5
Transportation services	300.125	300.775	302.297	2.4	0.7	0.5

Note: See footnotes at end of table.

Table 1. Consumer Price Index for All Urban Consumers (CPI-U): Indexes and percent changes for selected periods Midwest (1982-84=100 unless otherwise noted) - Continued

Item and Group	Indexes			Percent change from-		
	Nov. 2016	Dec. 2016	Jan. 2017	Jan. 2016	Nov. 2016	Dec. 2016
Other services	334.004	334.126	335.288	1.7	0.4	0.3
Special aggregate indexes:						
All items less medical care	214.809	214.926	216.404	2.0	0.7	0.7
All items less food	224.512	224.706	226.341	2.7	0.8	0.7
All items less shelter.....	217.503	217.663	219.271	2.0	0.8	0.7
Commodities less food	146.145	146.503	148.333	2.6	1.5	1.2
Nondurables	211.204	211.481	213.626	2.7	1.1	1.0
Nondurables less food.....	186.888	187.658	191.061	6.2	2.2	1.8
Nondurables less food and apparel.....	226.684	230.886	236.083	8.4	4.1	2.3
Services less rent of shelter(2).....	313.216	313.347	315.145	2.8	0.6	0.6
Services less medical care services.....	263.438	263.516	265.024	2.6	0.6	0.6
Energy	181.718	186.581	194.261	14.4	6.9	4.1
All items less energy	233.924	233.578	234.471	1.3	0.2	0.4
All items less food and energy	233.665	233.317	234.276	1.7	0.3	0.4
Commodities less food and energy commodities	144.090	143.124	143.776	-0.8	-0.2	0.5
Energy commodities.....	188.488	199.799	211.647	27.5	12.3	5.9
Services less energy services	292.974	293.096	294.254	2.7	0.4	0.4

Footnotes(1) This index series was calculated using a Laspeyres estimator. All other item stratum index series were calculated using a geometric means estimator.

(2) Index is on a December 1982=100 base.

(3) Indexes on a December 1997=100 base.

(4) Special index based on a substantially smaller sample.

(5) Indexes on a December 1993=100 base.

Regions defined as the four Census regions. Midwest includes Illinois, Indiana, Iowa, Kansas, Michigan, Minnesota, Missouri, Nebraska, North Dakota, Ohio, South Dakota, and Wisconsin.

NOTE: Index applies to a month as a whole, not to any specific date. Data not seasonally adjusted.

Table 2. Consumer Price Index for Urban Wage Earners and Clerical Workers (CPI-W): Indexes and percent changes for selected periods Midwest (1982-84=100 unless otherwise noted)

Item and Group	Indexes			Percent change from-		
	Nov. 2016	Dec. 2016	Jan. 2017	Jan. 2016	Nov. 2016	Dec. 2016
Expenditure category						
All Items.....	220.560	220.938	222.428	2.3	0.8	0.7
All items (December 1977=100).....	356.695	357.306	359.715			
Food and beverages	239.342	239.052	239.662	-0.7	0.1	0.3
Food	238.828	238.435	239.048	-0.8	0.1	0.3
Food at home	225.150	224.477	225.479	-2.5	0.1	0.4
Food away from home.....	264.729	264.918	264.722	2.2	0.0	-0.1
Alcoholic beverages	245.971	247.365	247.930	1.5	0.8	0.2
Housing	212.953	213.121	214.425	2.6	0.7	0.6
Shelter	247.415	247.677	248.484	2.7	0.4	0.3
Rent of primary residence(1).....	258.260	258.864	259.386	2.9	0.4	0.2
Owners' equiv. rent of residences(1)(2).....	244.640	245.159	245.616	2.8	0.4	0.2
Owners' equiv. rent of primary residence(1)(2).....	244.636	245.154	245.613	2.8	0.4	0.2
Fuels and utilities.....	215.161	215.230	219.798	4.4	2.2	2.1
Household energy	175.895	175.838	180.218	4.2	2.5	2.5
Energy services(1)	181.961	181.470	185.951	3.9	2.2	2.5
Electricity(1).....	194.762	194.292	196.983	0.4	1.1	1.4
Utility (piped) gas service(1).....	149.843	149.344	156.744	12.7	4.6	5.0
Household furnishings and operations.....	111.257	111.177	111.826	-1.2	0.5	0.6
Apparel	116.462	111.581	111.766	-1.9	-4.0	0.2
Transportation	185.941	188.866	192.194	6.0	3.4	1.8
Private transportation	182.510	185.507	188.762	6.3	3.4	1.8
New and used motor vehicles(3).....	95.859	95.890	96.086	-2.1	0.2	0.2
New vehicles	141.628	141.986	143.211	-0.7	1.1	0.9
Used cars and trucks.....	139.023	138.710	138.600	-3.4	-0.3	-0.1
Motor fuel	188.914	200.289	212.443	28.2	12.5	6.1
Gasoline (all types).....	187.655	199.100	211.212	28.3	12.6	6.1
Gasoline, unleaded regular(4).....	181.609	193.094	205.094	29.1	12.9	6.2
Gasoline, unleaded midgrade(4)(5).....	219.398	232.155	245.895	26.9	12.1	5.9
Gasoline, unleaded premium(4).....	213.395	223.429	234.083	23.6	9.7	4.8
Medical Care	482.770	482.922	484.842	4.0	0.4	0.4
Medical care commodities.....	373.183	374.113	378.327	3.4	1.4	1.1
Medical care services.....	516.982	516.854	517.937	4.1	0.2	0.2
Professional services	415.777	415.482	416.489	3.8	0.2	0.2
Recreation(3).....	114.372	113.785	114.699	1.2	0.3	0.8
Education and communication(3).....	131.861	132.022	132.040	-0.5	0.1	0.0
Other goods and services	457.311	460.687	460.918	2.2	0.8	0.1
Commodity and Service Group						
All Items.....	220.560	220.938	222.428	2.3	0.8	0.7
Commodities	176.184	176.770	178.454	1.7	1.3	1.0
Commodities less food & beverages.....	145.774	146.688	148.741	3.3	2.0	1.4
Nondurables less food & beverages	189.554	191.593	195.810	7.9	3.3	2.2
Nondurables less food, beverages, and apparel	234.844	240.701	247.231	10.6	5.3	2.7
Durables	104.539	104.580	104.938	-2.4	0.4	0.3
Services.....	272.854	273.020	274.339	2.7	0.5	0.5
Rent of shelter(2).....	245.826	246.088	246.898	2.8	0.4	0.3
Transportation services	302.212	303.158	304.157	2.9	0.6	0.3
Other services	308.397	308.316	309.487	1.4	0.4	0.4
Special aggregate indexes:						

Note: See footnotes at end of table.

Table 2. Consumer Price Index for Urban Wage Earners and Clerical Workers (CPI-W): Indexes and percent changes for selected periods Midwest (1982-84=100 unless otherwise noted) - Continued

Item and Group	Indexes			Percent change from-		
	Nov. 2016	Dec. 2016	Jan. 2017	Jan. 2016	Nov. 2016	Dec. 2016
All items less medical care	210.510	210.897	212.369	2.2	0.9	0.7
All items less food	216.897	217.398	219.023	2.9	1.0	0.7
All items less shelter.....	213.386	213.810	215.559	2.1	1.0	0.8
Commodities less food	148.747	149.676	151.706	3.2	2.0	1.4
Nondurables	214.553	215.492	218.012	3.2	1.6	1.2
Nondurables less food.....	192.422	194.430	198.467	7.5	3.1	2.1
Nondurables less food and apparel.....	234.187	239.670	245.708	9.9	4.9	2.5
Services less rent of shelter(2).....	277.018	277.067	278.810	2.7	0.6	0.6
Services less medical care services.....	256.763	256.947	258.273	2.6	0.6	0.5
Energy	181.202	186.445	194.410	15.2	7.3	4.3
All items less energy	227.214	227.018	227.750	1.2	0.2	0.3
All items less food and energy	225.038	224.878	225.632	1.6	0.3	0.3
Commodities less food and energy commodities	146.549	145.844	146.357	-1.2	-0.1	0.4
Energy commodities.....	188.981	200.280	212.152	27.4	12.3	5.9
Services less energy services	284.869	285.116	286.055	2.7	0.4	0.3

Footnotes(1) This index series was calculated using a Laspeyres estimator. All other item stratum index series were calculated using a geometric means estimator.

(2) Index is on a December 1984=100 base.

(3) Indexes on a December 1997=100 base.

(4) Special index based on a substantially smaller sample.

(5) Indexes on a December 1993=100 base.

Regions defined as the four Census regions. Midwest includes Illinois, Indiana, Iowa, Kansas, Michigan, Minnesota, Missouri, Nebraska, North Dakota, Ohio, South Dakota, and Wisconsin.

NOTE: Index applies to a month as a whole, not to any specific date. Data not seasonally adjusted.