



For Release: Wednesday, March 15, 2017

17-336-KAN

MOUNTAIN-PLAINS INFORMATION OFFICE: Kansas City, Mo.

Technical information: (816) 285-7000 BLSInfoKansasCity@bls.gov www.bls.gov/regions/mountain-plains

Media contact: (816) 285-7000

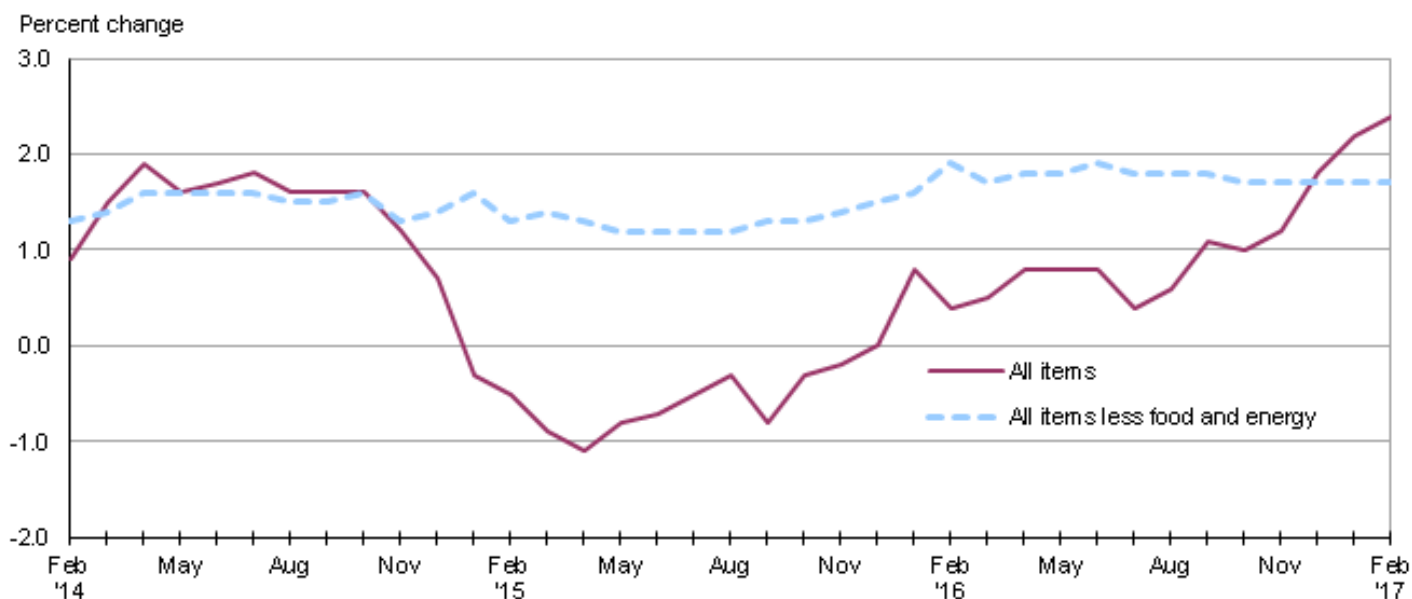
Consumer Price Index, Midwest Region – February 2017

Prices in the Midwest up 0.2 percent in February, and 2.4 percent higher over the year

The Consumer Price Index for All Urban Consumers (CPI-U) in the Midwest rose 0.2 percent in February, the U.S. Bureau of Labor Statistics reported today. The monthly advance was led by a 0.4-percent increase in the index for all items less food and energy. Food prices were 0.2 percent higher over the month and also contributed to the upward movement. Partially offsetting the increases was a 2.3-percent decline in energy costs. (Data in this report are not seasonally adjusted. Accordingly, month-to-month changes may reflect the impact of seasonal influences.)

The CPI-U for the Midwest rose 2.4 percent from February 2016 to February 2017, the largest over-the-year increase since March 2012. (See [chart 1](#) and [table A](#).) The energy index, which includes motor fuel and household fuels, was up 17.7 percent, but food prices decreased 0.2 percent. Excluding food and energy, the CPI-U advanced 1.7 percent over the year. (See [table 1](#).)

Chart 1. Over-the-year percent change in CPI-U, Midwest region, February 2014–February 2017



Source: U.S. Bureau of Labor Statistics.

Food

Food prices increased 0.2 percent in February. Higher costs for food at home and for food away from home, each up 0.2 percent, contributed to the monthly advance.

From February 2016 to February 2017, the index for food decreased 0.2 percent. Prices for food at home registered their seventeenth consecutive over-the-year decrease, down 1.8 percent. Costs for food away from home rose 2.3 percent over the year.

Energy

The energy index turned down 2.3 percent in February and had the largest downward impact on the all items index. Lower motor fuel prices, down 4.5 percent, led the decrease in the energy component. Also contributing to the decline, costs for electricity and utility (piped) gas service decreased 0.4 and 0.5 percent, respectively, over the month.

Despite the monthly decline, energy costs advanced 17.7 percent from February 2016 to February 2017. Motor fuel prices jumped 38.3 percent over the year, the largest 12-month gain since June 2011. Costs for utility (piped) gas service increased 11.8 percent and prices for electricity were up 0.5 percent over the year.

All items less food and energy

The index for all items less food and energy for the Midwest rose 0.4 percent in February. Expenditure categories registering higher prices over the month included recreation (1.6 percent), apparel (2.7 percent), and shelter (0.2 percent).

The index for all items less food and energy was up 1.7 percent from February 2016 to February 2017. Higher costs for shelter (2.6 percent) and medical care services (3.9 percent) led the advance.

The Midwest Consumer Price Index for All Urban Consumers (CPI-U) stood at 228.633 in February 2017. A typical market basket of goods and services that cost \$100.00 in the 1982-84 base period cost \$228.63 in February 2017.

CPI-W

In February, the Midwest Consumer Price Index for Urban Wage Earners and Clerical Workers (CPI-W) was 222.507, unchanged over the month. The CPI-W increased 2.5 percent over the year.

Table A. Midwest region CPI-U 1-month and 12-month percent changes, all items index, not seasonally adjusted

| Month | 2013 | | 2014 | | 2015 | | 2016 | | 2017 | |
|----------------|---------|----------|---------|----------|---------|----------|---------|----------|---------|----------|
| | 1-month | 12-month | 1-month | 12-month | 1-month | 12-month | 1-month | 12-month | 1-month | 12-month |
| January..... | 0.1 | 1.3 | 0.5 | 1.4 | -0.6 | -0.3 | 0.3 | 0.8 | 0.7 | 2.2 |
| February..... | 1.1 | 2.2 | 0.6 | 0.9 | 0.3 | -0.5 | 0.0 | 0.4 | 0.2 | 2.4 |
| March..... | 0.2 | 1.4 | 0.9 | 1.5 | 0.6 | -0.9 | 0.6 | 0.5 | | |
| April..... | -0.1 | 1.2 | 0.3 | 1.9 | 0.1 | -1.1 | 0.4 | 0.8 | | |
| May..... | 0.5 | 1.8 | 0.2 | 1.6 | 0.4 | -0.8 | 0.4 | 0.8 | | |
| June..... | 0.3 | 2.2 | 0.5 | 1.7 | 0.5 | -0.7 | 0.6 | 0.8 | | |
| July..... | -0.4 | 1.8 | -0.3 | 1.8 | 0.0 | -0.5 | -0.5 | 0.4 | | |
| August..... | 0.1 | 1.2 | -0.2 | 1.6 | 0.0 | -0.3 | 0.1 | 0.6 | | |
| September..... | 0.1 | 1.0 | 0.1 | 1.6 | -0.3 | -0.8 | 0.2 | 1.1 | | |
| October..... | -0.5 | 0.8 | -0.5 | 1.6 | -0.1 | -0.3 | -0.1 | 1.0 | | |
| November..... | -0.2 | 1.0 | -0.6 | 1.2 | -0.5 | -0.2 | -0.3 | 1.2 | | |
| December..... | -0.2 | 1.0 | -0.7 | 0.7 | -0.6 | 0.0 | 0.1 | 1.8 | | |

The March 2017 Consumer Price Index for the Midwest region is scheduled to be released on Friday, April 14, 2017.

Technical Note

The Consumer Price Index (CPI) is a measure of the average change in prices over time in a fixed market basket of goods and services. The Bureau of Labor Statistics publishes CPIs for two population groups: (1) a CPI for All Urban Consumers (CPI-U) which covers approximately 89 percent of the total population and (2) a CPI for Urban Wage Earners and Clerical Workers (CPI-W) which covers approximately 28 percent of the total population. The CPI-U includes, in addition to wage earners and clerical workers, groups such as professional, managerial, and technical workers, the self-employed, short-term workers, the unemployed, and retirees and others not in the labor force.

The CPI is based on prices of food, clothing, shelter, and fuels, transportation fares, charges for doctors' and dentists' services, drugs, and the other goods and services that people buy for day-to-day living. Each month, prices are collected in 87 urban areas across the country from about 6,000 housing units and approximately 24,000 retail establishments--department stores, supermarkets, hospitals, filling stations, and other types of stores and service establishments. All taxes directly associated with the purchase and use of items are included in the index.

The index measures price changes from a designated reference date (1982-84) that equals 100.0. An increase of 16.5 percent, for example, is shown as 116.5. This change can also be expressed in dollars as follows: the price of a base period "market basket" of goods and services in the CPI has risen from \$10 in 1982-84 to \$11.65. For further details see the CPI home page on the Internet at www.bls.gov/cpi and the BLS Handbook of Methods, Chapter 17, The Consumer Price Index, available on the Internet at www.bls.gov/opub/hom/homch17_a.htm.

In calculating the index, price changes for the various items in each location are averaged together with weights that represent their importance in the spending of the appropriate population group. Local data are then combined to obtain a U.S. city average. Because the sample size of a local area is smaller, the local area index is subject to substantially more sampling and other measurement error than the national index. In addition, local indexes are not adjusted for seasonal influences. As a result, local area indexes show greater volatility than the national index, although their long-term trends are quite similar. **NOTE: Area indexes do not measure differences in the level of prices between areas; they only measure the average change in prices for each area since the base period.**

The Midwest region is comprised of Illinois, Indiana, Iowa, Kansas, Michigan, Minnesota, Missouri, Nebraska, North Dakota, Ohio, South Dakota, and Wisconsin.

Information in this release will be made available to sensory impaired individuals upon request. Voice phone: (202) 691-5200; Federal Relay Service: (800) 877-8339.

Table 1. Consumer Price Index for All Urban Consumers (CPI-U): Indexes and percent changes for selected periods Midwest (1982-84=100 unless otherwise noted)

| Item and Group | Indexes | | | Percent change from- | | |
|---|--------------|--------------|--------------|----------------------|--------------|--------------|
| | Dec. 2016 | Jan. 2017 | Feb. 2017 | Feb. 2016 | Dec. 2016 | Jan. 2017 |
| Expenditure category | | | | | | |
| All Items..... | 226.794 | 228.279 | 228.633 | 2.4 | 0.8 | 0.2 |
| All items (December 1977=100)..... | 369.006 | 371.422 | 371.998 | | | |
| Food and beverages | 239.494 | 240.077 | 240.532 | -0.1 | 0.4 | 0.2 |
| Food | 238.923 | 239.464 | 240.000 | -0.2 | 0.5 | 0.2 |
| Food at home | 224.151 | 225.083 | 225.558 | -1.8 | 0.6 | 0.2 |
| Food away from home..... | 263.767 | 263.637 | 264.278 | 2.3 | 0.2 | 0.2 |
| Alcoholic beverages | 245.204 | 246.391 | 245.662 | 0.6 | 0.2 | -0.3 |
| Housing | 217.867 | 219.369 | 219.711 | 2.4 | 0.8 | 0.2 |
| Shelter | 258.348 | 259.528 | 260.016 | 2.6 | 0.6 | 0.2 |
| Rent of primary residence(1)..... | 258.228 | 258.736 | 259.003 | 2.6 | 0.3 | 0.1 |
| Owners' equiv. rent of residences(1)(2)..... | 263.042 | 263.522 | 263.834 | 2.7 | 0.3 | 0.1 |
| Owners' equiv. rent of primary residence(1)(2)..... | 263.028 | 263.506 | 263.812 | 2.7 | 0.3 | 0.1 |
| Fuels and utilities..... | 214.249 | 218.703 | 218.321 | 4.4 | 1.9 | -0.2 |
| Household energy | 175.144 | 179.422 | 178.854 | 4.4 | 2.1 | -0.3 |
| Energy services(1) | 182.197 | 186.608 | 185.745 | 3.9 | 1.9 | -0.5 |
| Electricity(1)..... | 196.059 | 198.684 | 197.811 | 0.5 | 0.9 | -0.4 |
| Utility (piped) gas service(1)..... | 148.229 | 155.269 | 154.476 | 11.8 | 4.2 | -0.5 |
| Household furnishings and operations..... | 113.109 | 113.896 | 114.268 | -0.9 | 1.0 | 0.3 |
| Apparel | 113.436 | 113.754 | 116.785 | -0.7 | 3.0 | 2.7 |
| Transportation | 192.164 | 195.395 | 193.850 | 6.4 | 0.9 | -0.8 |
| Private transportation | 186.910 | 190.013 | 188.209 | 6.8 | 0.7 | -0.9 |
| New and used motor vehicles(3)..... | 96.626 | 96.984 | 97.207 | -1.9 | 0.6 | 0.2 |
| New vehicles | 138.938 | 140.162 | 140.337 | -0.6 | 1.0 | 0.1 |
| New cars and trucks(3)(4)..... | 98.261 | 98.999 | 99.121 | -0.8 | 0.9 | 0.1 |
| New cars(4)..... | 134.687 | 136.756 | 137.672 | 0.2 | 2.2 | 0.7 |
| Used cars and trucks..... | 138.152 | 138.051 | 138.424 | -4.1 | 0.2 | 0.3 |
| Motor fuel | 199.912 | 212.034 | 202.461 | 38.3 | 1.3 | -4.5 |
| Gasoline (all types)..... | 198.809 | 210.904 | 201.278 | 38.5 | 1.2 | -4.6 |
| Gasoline, unleaded regular(4)..... | 192.964 | 204.966 | 195.197 | 39.6 | 1.2 | -4.8 |
| Gasoline, Unleaded midgrade(4)(5)..... | 232.281 | 246.015 | 237.973 | 36.0 | 2.5 | -3.3 |
| Gasoline, unleaded premium(4)..... | 223.666 | 234.328 | 226.251 | 32.0 | 1.2 | -3.4 |
| Medical Care | 477.476 | 479.115 | 480.573 | 3.8 | 0.6 | 0.3 |
| Medical care commodities..... | 382.672 | 386.773 | 388.355 | 3.5 | 1.5 | 0.4 |
| Medical care services..... | 509.346 | 510.100 | 511.508 | 3.9 | 0.4 | 0.3 |
| Professional services | 412.901 | 413.960 | 415.610 | 4.0 | 0.7 | 0.4 |
| Recreation(3)..... | 117.984 | 118.860 | 120.781 | 2.4 | 2.4 | 1.6 |
| Education and communication(3)..... | 140.552 | 140.444 | 140.076 | -0.2 | -0.3 | -0.3 |
| Other goods and services | 412.612 | 412.612 | 412.232 | 1.6 | -0.1 | -0.1 |
| Commodity and Service Group | | | | | | |
| All Items..... | 226.794 | 228.279 | 228.633 | 2.4 | 0.8 | 0.2 |
| Commodities | 174.645 | 176.159 | 176.119 | 2.0 | 0.8 | 0.0 |
| Commodities less food & beverages..... | 143.331 | 145.170 | 144.935 | 3.4 | 1.1 | -0.2 |
| Nondurables less food & beverages | 184.435 | 187.971 | 187.154 | 7.9 | 1.5 | -0.4 |
| Nondurables less food, beverages, and apparel | 230.989 | 236.605 | 233.321 | 11.0 | 1.0 | -1.4 |
| Durables | 103.073 | 103.529 | 103.741 | -2.1 | 0.6 | 0.2 |
| Services..... | 280.562 | 282.021 | 282.777 | 2.7 | 0.8 | 0.3 |
| Rent of shelter(2)..... | 265.482 | 266.708 | 267.212 | 2.6 | 0.7 | 0.2 |
| Transportation services | 300.775 | 302.297 | 303.383 | 2.6 | 0.9 | 0.4 |

Note: See footnotes at end of table.

Table 1. Consumer Price Index for All Urban Consumers (CPI-U): Indexes and percent changes for selected periods Midwest (1982-84=100 unless otherwise noted) - Continued

| Item and Group | Indexes | | | Percent change from- | | |
|---|--------------|--------------|--------------|----------------------|--------------|--------------|
| | Dec. 2016 | Jan. 2017 | Feb. 2017 | Feb. 2016 | Dec. 2016 | Jan. 2017 |
| Other services | 334.126 | 335.288 | 337.388 | 2.0 | 1.0 | 0.6 |
| Special aggregate indexes: | | | | | | |
| All items less medical care | 214.926 | 216.404 | 216.705 | 2.3 | 0.8 | 0.1 |
| All items less food | 224.706 | 226.341 | 226.666 | 2.9 | 0.9 | 0.1 |
| All items less shelter..... | 217.663 | 219.271 | 219.580 | 2.4 | 0.9 | 0.1 |
| Commodities less food | 146.503 | 148.333 | 148.084 | 3.3 | 1.1 | -0.2 |
| Nondurables | 211.481 | 213.626 | 213.412 | 3.5 | 0.9 | -0.1 |
| Nondurables less food..... | 187.658 | 191.061 | 190.250 | 7.4 | 1.4 | -0.4 |
| Nondurables less food and apparel..... | 230.886 | 236.083 | 233.040 | 10.0 | 0.9 | -1.3 |
| Services less rent of shelter(2)..... | 313.347 | 315.145 | 316.220 | 2.8 | 0.9 | 0.3 |
| Services less medical care services..... | 263.516 | 265.024 | 265.732 | 2.6 | 0.8 | 0.3 |
| Energy | 186.581 | 194.261 | 189.806 | 17.7 | 1.7 | -2.3 |
| All items less energy | 233.578 | 234.471 | 235.303 | 1.4 | 0.7 | 0.4 |
| All items less food and energy | 233.317 | 234.276 | 235.165 | 1.7 | 0.8 | 0.4 |
| Commodities less food and energy commodities | 143.124 | 143.776 | 144.568 | -0.9 | 1.0 | 0.6 |
| Energy commodities..... | 199.799 | 211.647 | 202.786 | 37.1 | 1.5 | -4.2 |
| Services less energy services | 293.096 | 294.254 | 295.187 | 2.7 | 0.7 | 0.3 |

Footnotes(1) This index series was calculated using a Laspeyres estimator. All other item stratum index series were calculated using a geometric means estimator.

(2) Index is on a December 1982=100 base.

(3) Indexes on a December 1997=100 base.

(4) Special index based on a substantially smaller sample.

(5) Indexes on a December 1993=100 base.

Regions defined as the four Census regions. Midwest includes Illinois, Indiana, Iowa, Kansas, Michigan, Minnesota, Missouri, Nebraska, North Dakota, Ohio, South Dakota, and Wisconsin.

NOTE: Index applies to a month as a whole, not to any specific date. Data not seasonally adjusted.

Table 2. Consumer Price Index for Urban Wage Earners and Clerical Workers (CPI-W): Indexes and percent changes for selected periods Midwest (1982-84=100 unless otherwise noted)

| Item and Group | Indexes | | | Percent change from- | | |
|---|--------------|--------------|--------------|----------------------|--------------|--------------|
| | Dec. 2016 | Jan. 2017 | Feb. 2017 | Feb. 2016 | Dec. 2016 | Jan. 2017 |
| Expenditure category | | | | | | |
| All Items..... | 220.938 | 222.428 | 222.507 | 2.5 | 0.7 | 0.0 |
| All items (December 1977=100)..... | 357.306 | 359.715 | 359.843 | | | |
| Food and beverages | 239.052 | 239.662 | 240.160 | -0.3 | 0.5 | 0.2 |
| Food | 238.435 | 239.048 | 239.608 | -0.4 | 0.5 | 0.2 |
| Food at home | 224.477 | 225.479 | 226.040 | -1.9 | 0.7 | 0.2 |
| Food away from home..... | 264.918 | 264.722 | 265.274 | 2.3 | 0.1 | 0.2 |
| Alcoholic beverages | 247.365 | 247.930 | 247.413 | 0.8 | 0.0 | -0.2 |
| Housing | 213.121 | 214.425 | 214.683 | 2.5 | 0.7 | 0.1 |
| Shelter | 247.677 | 248.484 | 248.857 | 2.6 | 0.5 | 0.2 |
| Rent of primary residence(1)..... | 258.864 | 259.386 | 259.662 | 2.6 | 0.3 | 0.1 |
| Owners' equiv. rent of residences(1)(2)..... | 245.159 | 245.616 | 245.864 | 2.6 | 0.3 | 0.1 |
| Owners' equiv. rent of primary residence(1)(2)..... | 245.154 | 245.613 | 245.859 | 2.6 | 0.3 | 0.1 |
| Fuels and utilities..... | 215.230 | 219.798 | 219.524 | 4.5 | 2.0 | -0.1 |
| Household energy | 175.838 | 180.218 | 179.754 | 4.4 | 2.2 | -0.3 |
| Energy services(1) | 181.470 | 185.951 | 185.175 | 3.9 | 2.0 | -0.4 |
| Electricity(1)..... | 194.292 | 196.983 | 196.274 | 0.6 | 1.0 | -0.4 |
| Utility (piped) gas service(1)..... | 149.344 | 156.744 | 155.892 | 12.0 | 4.4 | -0.5 |
| Household furnishings and operations..... | 111.177 | 111.826 | 112.130 | -1.3 | 0.9 | 0.3 |
| Apparel | 111.581 | 111.766 | 114.376 | -0.8 | 2.5 | 2.3 |
| Transportation | 188.866 | 192.194 | 190.281 | 7.2 | 0.7 | -1.0 |
| Private transportation | 185.507 | 188.762 | 186.740 | 7.4 | 0.7 | -1.1 |
| New and used motor vehicles(3)..... | 95.890 | 96.086 | 96.353 | -2.5 | 0.5 | 0.3 |
| New vehicles | 141.986 | 143.211 | 143.513 | -0.7 | 1.1 | 0.2 |
| Used cars and trucks..... | 138.710 | 138.600 | 138.957 | -4.2 | 0.2 | 0.3 |
| Motor fuel | 200.289 | 212.443 | 202.924 | 38.6 | 1.3 | -4.5 |
| Gasoline (all types)..... | 199.100 | 211.212 | 201.654 | 38.8 | 1.3 | -4.5 |
| Gasoline, unleaded regular(4)..... | 193.094 | 205.094 | 195.433 | 39.9 | 1.2 | -4.7 |
| Gasoline, unleaded midgrade(4)(5)..... | 232.155 | 245.895 | 237.786 | 36.2 | 2.4 | -3.3 |
| Gasoline, unleaded premium(4)..... | 223.429 | 234.083 | 225.941 | 32.0 | 1.1 | -3.5 |
| Medical Care | 482.922 | 484.842 | 486.218 | 3.8 | 0.7 | 0.3 |
| Medical care commodities..... | 374.113 | 378.327 | 380.004 | 3.0 | 1.6 | 0.4 |
| Medical care services..... | 516.854 | 517.937 | 519.192 | 4.0 | 0.5 | 0.2 |
| Professional services | 415.482 | 416.489 | 418.363 | 4.0 | 0.7 | 0.4 |
| Recreation(3)..... | 113.785 | 114.699 | 116.270 | 1.8 | 2.2 | 1.4 |
| Education and communication(3)..... | 132.022 | 132.040 | 131.596 | -0.5 | -0.3 | -0.3 |
| Other goods and services | 460.687 | 460.918 | 459.798 | 1.7 | -0.2 | -0.2 |
| Commodity and Service Group | | | | | | |
| All Items..... | 220.938 | 222.428 | 222.507 | 2.5 | 0.7 | 0.0 |
| Commodities | 176.770 | 178.454 | 178.109 | 2.4 | 0.8 | -0.2 |
| Commodities less food & beverages..... | 146.688 | 148.741 | 148.075 | 4.2 | 0.9 | -0.4 |
| Nondurables less food & beverages | 191.593 | 195.810 | 194.004 | 9.9 | 1.3 | -0.9 |
| Nondurables less food, beverages, and apparel | 240.701 | 247.231 | 242.974 | 13.1 | 0.9 | -1.7 |
| Durables | 104.580 | 104.938 | 105.138 | -2.6 | 0.5 | 0.2 |
| Services..... | 273.020 | 274.339 | 274.870 | 2.7 | 0.7 | 0.2 |
| Rent of shelter(2)..... | 246.088 | 246.898 | 247.271 | 2.6 | 0.5 | 0.2 |
| Transportation services | 303.158 | 304.157 | 304.810 | 2.7 | 0.5 | 0.2 |
| Other services | 308.316 | 309.487 | 310.890 | 1.5 | 0.8 | 0.5 |
| Special aggregate indexes: | | | | | | |

Note: See footnotes at end of table.

Table 2. Consumer Price Index for Urban Wage Earners and Clerical Workers (CPI-W): Indexes and percent changes for selected periods Midwest (1982-84=100 unless otherwise noted) - Continued

| Item and Group | Indexes | | | Percent change from- | | |
|---|--------------|--------------|--------------|----------------------|--------------|--------------|
| | Dec. 2016 | Jan. 2017 | Feb. 2017 | Feb. 2016 | Dec. 2016 | Jan. 2017 |
| All items less medical care | 210.897 | 212.369 | 212.399 | 2.4 | 0.7 | 0.0 |
| All items less food | 217.398 | 219.023 | 219.025 | 3.1 | 0.7 | 0.0 |
| All items less shelter..... | 213.810 | 215.559 | 215.535 | 2.5 | 0.8 | 0.0 |
| Commodities less food | 149.676 | 151.706 | 151.040 | 4.0 | 0.9 | -0.4 |
| Nondurables | 215.492 | 218.012 | 217.296 | 4.3 | 0.8 | -0.3 |
| Nondurables less food..... | 194.430 | 198.467 | 196.724 | 9.3 | 1.2 | -0.9 |
| Nondurables less food and apparel..... | 239.670 | 245.708 | 241.761 | 12.0 | 0.9 | -1.6 |
| Services less rent of shelter(2)..... | 277.067 | 278.810 | 279.462 | 2.7 | 0.9 | 0.2 |
| Services less medical care services..... | 256.947 | 258.273 | 258.758 | 2.5 | 0.7 | 0.2 |
| Energy | 186.445 | 194.410 | 189.751 | 18.9 | 1.8 | -2.4 |
| All items less energy | 227.018 | 227.750 | 228.394 | 1.2 | 0.6 | 0.3 |
| All items less food and energy | 224.878 | 225.632 | 226.292 | 1.5 | 0.6 | 0.3 |
| Commodities less food and energy commodities | 145.844 | 146.357 | 146.977 | -1.2 | 0.8 | 0.4 |
| Energy commodities..... | 200.280 | 212.152 | 203.338 | 37.2 | 1.5 | -4.2 |
| Services less energy services | 285.116 | 286.055 | 286.747 | 2.6 | 0.6 | 0.2 |

Footnotes(1) This index series was calculated using a Laspeyres estimator. All other item stratum index series were calculated using a geometric means estimator.

(2) Index is on a December 1984=100 base.

(3) Indexes on a December 1997=100 base.

(4) Special index based on a substantially smaller sample.

(5) Indexes on a December 1993=100 base.

Regions defined as the four Census regions. Midwest includes Illinois, Indiana, Iowa, Kansas, Michigan, Minnesota, Missouri, Nebraska, North Dakota, Ohio, South Dakota, and Wisconsin.

NOTE: Index applies to a month as a whole, not to any specific date. Data not seasonally adjusted.