



For Release: Friday, May 12, 2017

17-610-KAN

MOUNTAIN-PLAINS INFORMATION OFFICE: Kansas City, Mo.

Technical information: (816) 285-7000 BLSInfoKansasCity@bls.gov www.bls.gov/regions/mountain-plains

Media contact: (816) 285-7000

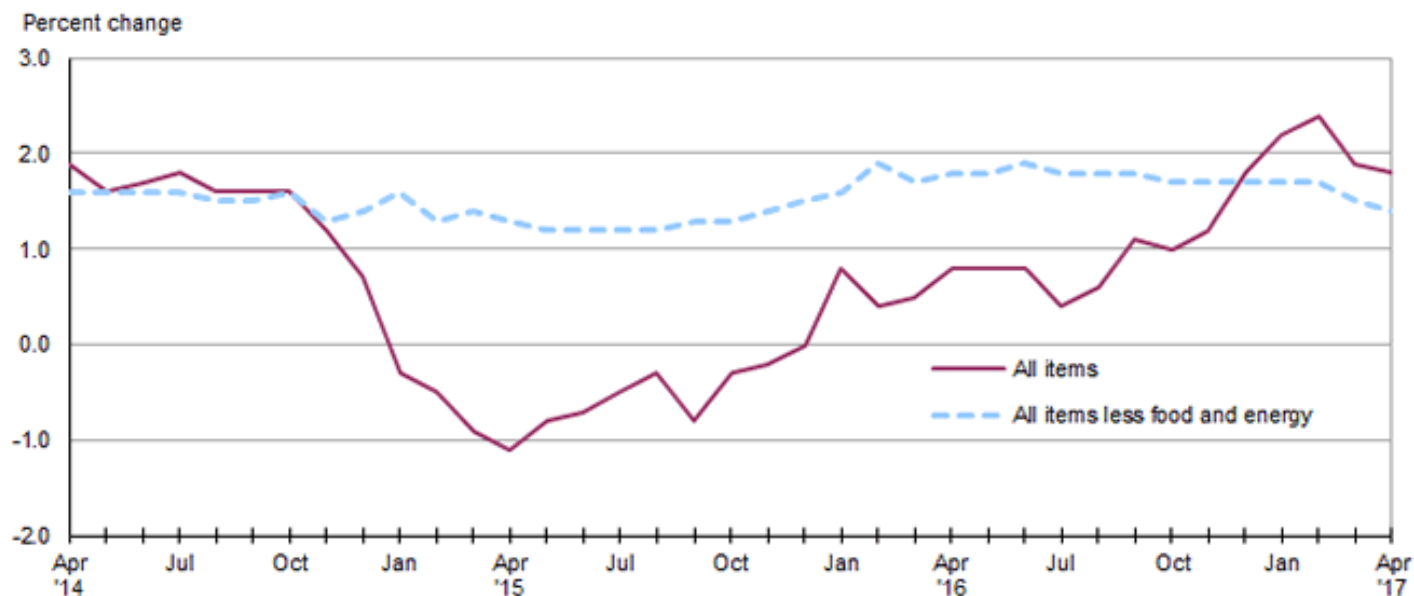
## Consumer Price Index, Midwest Region – April 2017

### Prices in the Midwest up 0.4 percent in April and 1.8 percent higher over the year

The April Consumer Price Index for All Urban Consumers (CPI-U) in the Midwest rose 0.4 percent, the U.S. Bureau of Labor Statistics reported today. The monthly advance was led by higher costs for motor fuel (4.9 percent) and shelter (0.3 percent). The broader energy index was up 2.4 percent and the index for all items less food and energy, which includes shelter, increased 0.2 percent. Food prices registered little movement (0.1 percent) over the month. (Data in this report are not seasonally adjusted. Accordingly, month-to-month changes may reflect the impact of seasonal influences.)

The CPI-U for the Midwest rose 1.8 percent from April 2016 to April 2017. (See [chart 1](#) and [table A.](#)) The energy index, which includes motor fuel and household fuels, was up 9.6 percent and food prices were unchanged. Excluding food and energy, the CPI-U advanced 1.4 percent over the year. (See [table 1.](#))

**Chart 1. Over-the-year percent change in CPI-U, Midwest region, April 2014–April 2017**



Source: U.S. Bureau of Labor Statistics.

## Food

Food prices in the Midwest registered little movement (0.1 percent) in April. The index for food at home was unchanged, while costs for food away from home rose a slight 0.1 percent over the month.

From April 2016 to April 2017, the index for food was unchanged. Prices for food at home were down 1.2 percent. This over-the-year measure has declined every month since October 2015. Costs for food away from home rose 1.8 percent over the year, offsetting the decrease in the food at home index.

## Energy

The energy index rose 2.4 percent in April. Higher prices for motor fuel, up 4.9 percent, were largely responsible for the increase in the energy component. Electricity prices also contributed to the advance, rising 0.5 percent over the month. Costs for utility (piped) gas service were virtually unchanged (-0.1 percent).

Energy costs increased 9.6 percent from April 2016 to April 2017. Motor fuel prices rose 14.6 percent over the year. Costs for utility (piped) gas service were 14.4-percent higher and prices for electricity were up 1.4 percent.

## All items less food and energy

The index for all items less food and energy for the Midwest increased 0.2 percent in April. Expenditure categories registering higher prices over the month included shelter (0.3 percent) and apparel (1.8 percent). Partially offsetting the increases, costs for education and communication declined 0.6 percent over the month.

The index for all items less food and energy was up 1.4 percent from April 2016 to April 2017. Higher costs for shelter (2.5 percent) and medical care services (2.9 percent) led the advance.

The Midwest Consumer Price Index for All Urban Consumers (CPI-U) stood at 229.682 in April 2017. A typical market basket of goods and services that cost \$100.00 in the 1982-84 base period cost \$229.68 in April 2017.

## CPI-W

In April, the Midwest Consumer Price Index for Urban Wage Earners and Clerical Workers (CPI-W) was 223.577, up 0.4 percent over the month. The CPI-W increased 1.7 percent over the year.

**Table A. Midwest region CPI-U 1-month and 12-month percent changes, all items index, not seasonally adjusted**

Month	2013		2014		2015		2016		2017	
	1-month	12-month	1-month	12-month	1-month	12-month	1-month	12-month	1-month	12-month
January.....	0.1	1.3	0.5	1.4	-0.6	-0.3	0.3	0.8	0.7	2.2
February.....	1.1	2.2	0.6	0.9	0.3	-0.5	0.0	0.4	0.2	2.4
March.....	0.2	1.4	0.9	1.5	0.6	-0.9	0.6	0.5	0.1	1.9
April.....	-0.1	1.2	0.3	1.9	0.1	-1.1	0.4	0.8	0.4	1.8
May.....	0.5	1.8	0.2	1.6	0.4	-0.8	0.4	0.8		
June.....	0.3	2.2	0.5	1.7	0.5	-0.7	0.6	0.8		
July.....	-0.4	1.8	-0.3	1.8	0.0	-0.5	-0.5	0.4		
August.....	0.1	1.2	-0.2	1.6	0.0	-0.3	0.1	0.6		
September.....	0.1	1.0	0.1	1.6	-0.3	-0.8	0.2	1.1		
October.....	-0.5	0.8	-0.5	1.6	-0.1	-0.3	-0.1	1.0		
November.....	-0.2	1.0	-0.6	1.2	-0.5	-0.2	-0.3	1.2		
December.....	-0.2	1.0	-0.7	0.7	-0.6	0.0	0.1	1.8		

**The May 2017 Consumer Price Index for the Midwest region is scheduled to be released on Wednesday, June 14, 2017.**

## Technical Note

The Consumer Price Index (CPI) is a measure of the average change in prices over time in a fixed market basket of goods and services. The Bureau of Labor Statistics publishes CPIs for two population groups: (1) a CPI for All Urban Consumers (CPI-U) which covers approximately 89 percent of the total population and (2) a CPI for Urban Wage Earners and Clerical Workers (CPI-W) which covers approximately 28 percent of the total population. The CPI-U includes, in addition to wage earners and clerical workers, groups such as professional, managerial, and technical workers, the self-employed, short-term workers, the unemployed, and retirees and others not in the labor force.

The CPI is based on prices of food, clothing, shelter, and fuels, transportation fares, charges for doctors' and dentists' services, drugs, and the other goods and services that people buy for day-to-day living. Each month, prices are collected in 87 urban areas across the country from about 6,000 housing units and approximately 24,000 retail establishments--department stores, supermarkets, hospitals, filling stations, and other types of stores and service establishments. All taxes directly associated with the purchase and use of items are included in the index.

The index measures price changes from a designated reference date (1982-84) that equals 100.0. An increase of 16.5 percent, for example, is shown as 116.5. This change can also be expressed in dollars as follows: the price of a base period "market basket" of goods and services in the CPI has risen from \$10 in 1982-84 to \$11.65. For further details see the CPI home page on the Internet at [www.bls.gov/cpi](http://www.bls.gov/cpi) and the BLS Handbook of Methods, Chapter 17, The Consumer Price Index, available on the Internet at [www.bls.gov/opub/hom/homch17\\_a.htm](http://www.bls.gov/opub/hom/homch17_a.htm).

In calculating the index, price changes for the various items in each location are averaged together with weights that represent their importance in the spending of the appropriate population group. Local data are then combined to obtain a U.S. city average. Because the sample size of a local area is smaller, the local area index is subject to substantially more sampling and other measurement error than the national index. In addition, local indexes are not adjusted for seasonal influences. As a result, local area indexes show greater volatility than the national index, although their long-term trends are quite similar. **NOTE: Area indexes do not measure differences in the level of prices between areas; they only measure the average change in prices for each area since the base period.**

The Midwest region is comprised of Illinois, Indiana, Iowa, Kansas, Michigan, Minnesota, Missouri, Nebraska, North Dakota, Ohio, South Dakota, and Wisconsin.

Information in this release will be made available to sensory impaired individuals upon request. Voice phone: (202) 691-5200; Federal Relay Service: (800) 877-8339.

**Table 1. Consumer Price Index for All Urban Consumers (CPI-U): Indexes and percent changes for selected periods Midwest (1982-84=100 unless otherwise noted)**

Item and Group	Indexes			Percent change from-		
	Feb. 2017	Mar. 2017	Apr. 2017	Apr. 2016	Feb. 2017	Mar. 2017
<b>Expenditure category</b>						
All Items.....	228.633	228.824	229.682	1.8	0.5	0.4
All items (December 1977=100).....	371.998	372.309	373.705			
Food and beverages .....	240.532	240.842	241.056	0.1	0.2	0.1
Food .....	240.000	240.330	240.532	0.0	0.2	0.1
Food at home .....	225.558	225.919	226.011	-1.2	0.2	0.0
Food away from home.....	264.278	264.553	264.944	1.8	0.3	0.1
Alcoholic beverages .....	245.662	245.680	246.063	0.7	0.2	0.2
Housing .....	219.711	219.759	220.351	2.5	0.3	0.3
Shelter .....	260.016	260.312	261.077	2.5	0.4	0.3
Rent of primary residence(1).....	259.003	259.587	260.446	3.0	0.6	0.3
Owners' equiv. rent of residences(1)(2).....	263.834	264.395	265.072	2.8	0.5	0.3
Owners' equiv. rent of primary residence(1)(2).....	263.812	264.370	265.044	2.8	0.5	0.3
Fuels and utilities.....	218.321	217.084	217.646	5.1	-0.3	0.3
Household energy .....	178.854	177.386	177.850	5.5	-0.6	0.3
Energy services(1) .....	185.745	184.406	184.941	5.2	-0.4	0.3
Electricity(1).....	197.811	198.192	199.158	1.4	0.7	0.5
Utility (piped) gas service(1).....	154.476	150.422	150.223	14.4	-2.8	-0.1
Household furnishings and operations.....	114.268	114.349	114.475	-0.5	0.2	0.1
Apparel .....	116.785	118.906	121.045	2.4	3.6	1.8
Transportation .....	193.850	195.223	197.985	3.0	2.1	1.4
Private transportation .....	188.209	189.455	191.861	3.2	1.9	1.3
New and used motor vehicles(3).....	97.207	97.259	97.357	-2.1	0.2	0.1
New vehicles .....	140.337	139.876	139.372	-0.3	-0.7	-0.4
New cars and trucks(3)(4).....	99.121	98.802	98.443	-0.4	-0.7	-0.4
New cars(4).....	137.672	136.562	136.270	0.4	-1.0	-0.2
Used cars and trucks.....	138.424	139.845	140.920	-4.8	1.8	0.8
Motor fuel .....	202.461	206.882	216.986	14.6	7.2	4.9
Gasoline (all types).....	201.278	205.745	215.921	14.5	7.3	4.9
Gasoline, unleaded regular(4).....	195.197	199.746	210.112	14.7	7.6	5.2
Gasoline, Unleaded midgrade(4)(5).....	237.973	241.431	249.021	12.9	4.6	3.1
Gasoline, unleaded premium(4).....	226.251	229.830	238.399	13.5	5.4	3.7
Medical Care .....	480.573	479.253	479.011	3.0	-0.3	-0.1
Medical care commodities.....	388.355	389.610	389.171	3.2	0.2	-0.1
Medical care services.....	511.508	509.274	509.103	2.9	-0.5	0.0
Professional services .....	415.610	414.303	415.167	3.5	-0.1	0.2
Recreation(3).....	120.781	121.447	121.578	2.2	0.7	0.1
Education and communication(3).....	140.076	137.614	136.820	-2.8	-2.3	-0.6
Other goods and services .....	412.232	412.323	413.453	1.7	0.3	0.3
<b>Commodity and Service Group</b>						
All Items.....	228.633	228.824	229.682	1.8	0.5	0.4
Commodities .....	176.119	176.752	177.904	1.0	1.0	0.7
Commodities less food & beverages.....	144.935	145.677	147.169	1.5	1.5	1.0
Nondurables less food & beverages .....	187.154	188.947	192.108	4.5	2.6	1.7
Nondurables less food, beverages, and apparel .....	233.321	234.914	238.749	5.2	2.3	1.6
Durables .....	103.741	103.652	103.805	-2.3	0.1	0.1
Services.....	282.777	282.517	283.077	2.4	0.1	0.2
Rent of shelter(2).....	267.212	267.501	268.285	2.5	0.4	0.3
Transportation services .....	303.383	304.921	307.524	2.6	1.4	0.9

Note: See footnotes at end of table.

**Table 1. Consumer Price Index for All Urban Consumers (CPI-U): Indexes and percent changes for selected periods Midwest (1982-84=100 unless otherwise noted) - Continued**

Item and Group	Indexes			Percent change from-		
	Feb. 2017	Mar. 2017	Apr. 2017	Apr. 2016	Feb. 2017	Mar. 2017
Other services .....	337.388	335.480	334.651	0.5	-0.8	-0.2
<b>Special aggregate indexes:</b>						
All items less medical care .....	216.705	216.968	217.879	1.7	0.5	0.4
All items less food .....	226.666	226.834	227.797	2.1	0.5	0.4
All items less shelter.....	219.580	219.735	220.635	1.5	0.5	0.4
Commodities less food .....	148.084	148.811	150.281	1.5	1.5	1.0
Nondurables .....	213.412	214.506	216.276	2.1	1.3	0.8
Nondurables less food.....	190.250	191.943	194.949	4.3	2.5	1.6
Nondurables less food and apparel.....	233.040	234.487	237.998	4.8	2.1	1.5
Services less rent of shelter(2).....	316.220	315.348	315.697	2.2	-0.2	0.1
Services less medical care services.....	265.732	265.616	266.229	2.3	0.2	0.2
Energy .....	189.806	190.872	195.496	9.6	3.0	2.4
All items less energy .....	235.303	235.410	235.908	1.2	0.3	0.2
All items less food and energy .....	235.165	235.232	235.785	1.4	0.3	0.2
Commodities less food and energy commodities .....	144.568	144.920	145.431	-0.5	0.6	0.4
Energy commodities.....	202.786	206.720	216.339	14.5	6.7	4.7
Services less energy services .....	295.187	295.040	295.607	2.2	0.1	0.2

Footnotes(1) This index series was calculated using a Laspeyres estimator. All other item stratum index series were calculated using a geometric means estimator.

(2) Index is on a December 1982=100 base.

(3) Indexes on a December 1997=100 base.

(4) Special index based on a substantially smaller sample.

(5) Indexes on a December 1993=100 base.

Regions defined as the four Census regions. Midwest includes Illinois, Indiana, Iowa, Kansas, Michigan, Minnesota, Missouri, Nebraska, North Dakota, Ohio, South Dakota, and Wisconsin.

NOTE: Index applies to a month as a whole, not to any specific date. Data not seasonally adjusted.

**Table 2. Consumer Price Index for Urban Wage Earners and Clerical Workers (CPI-W): Indexes and percent changes for selected periods Midwest (1982-84=100 unless otherwise noted)**

Item and Group	Indexes			Percent change from-		
	Feb. 2017	Mar. 2017	Apr. 2017	Apr. 2016	Feb. 2017	Mar. 2017
<b>Expenditure category</b>						
All Items.....	222.507	222.671	223.577	1.7	0.5	0.4
All items (December 1977=100).....	359.843	360.109	361.573			
Food and beverages .....	240.160	240.395	240.588	-0.2	0.2	0.1
Food .....	239.608	239.831	240.033	-0.2	0.2	0.1
Food at home .....	226.040	226.238	226.316	-1.3	0.1	0.0
Food away from home.....	265.274	265.546	266.003	1.7	0.3	0.2
Alcoholic beverages .....	247.413	247.850	247.886	0.9	0.2	0.0
Housing .....	214.683	214.753	215.300	2.6	0.3	0.3
Shelter .....	248.857	249.247	249.938	2.6	0.4	0.3
Rent of primary residence(1).....	259.662	260.233	261.098	3.0	0.6	0.3
Owners' equiv. rent of residences(1)(2).....	245.864	246.367	246.979	2.7	0.5	0.2
Owners' equiv. rent of primary residence(1)(2).....	245.859	246.361	246.972	2.7	0.5	0.2
Fuels and utilities.....	219.524	218.253	218.824	5.0	-0.3	0.3
Household energy .....	179.754	178.265	178.752	5.3	-0.6	0.3
Energy services(1) .....	185.175	183.871	184.412	5.1	-0.4	0.3
Electricity(1).....	196.274	196.622	197.468	1.3	0.6	0.4
Utility (piped) gas service(1).....	155.892	151.742	151.719	14.8	-2.7	0.0
Household furnishings and operations.....	112.130	112.114	112.176	-0.8	0.0	0.1
Apparel .....	114.376	116.868	119.304	3.0	4.3	2.1
Transportation .....	190.281	191.812	194.703	3.0	2.3	1.5
Private transportation .....	186.740	188.251	191.008	3.1	2.3	1.5
New and used motor vehicles(3).....	96.353	96.655	96.914	-2.8	0.6	0.3
New vehicles .....	143.513	143.165	142.541	-0.4	-0.7	-0.4
Used cars and trucks.....	138.957	140.374	141.436	-4.9	1.8	0.8
Motor fuel .....	202.924	207.244	217.303	14.3	7.1	4.9
Gasoline (all types).....	201.654	206.006	216.135	14.3	7.2	4.9
Gasoline, unleaded regular(4).....	195.433	199.830	210.151	14.4	7.5	5.2
Gasoline, unleaded midgrade(4)(5).....	237.786	241.333	248.767	12.8	4.6	3.1
Gasoline, unleaded premium(4).....	225.941	229.518	237.977	13.3	5.3	3.7
Medical Care .....	486.218	484.826	484.383	2.8	-0.4	-0.1
Medical care commodities.....	380.004	381.467	380.291	2.7	0.1	-0.3
Medical care services.....	519.192	516.796	516.619	2.9	-0.5	0.0
Professional services .....	418.363	416.540	417.329	3.4	-0.2	0.2
Recreation(3).....	116.270	116.727	117.073	1.6	0.7	0.3
Education and communication(3).....	131.596	128.624	127.522	-3.9	-3.1	-0.9
Other goods and services .....	459.798	460.521	462.509	2.0	0.6	0.4
<b>Commodity and Service Group</b>						
All Items.....	222.507	222.671	223.577	1.7	0.5	0.4
Commodities .....	178.109	178.934	180.335	1.0	1.2	0.8
Commodities less food & beverages.....	148.075	149.107	150.940	1.7	1.9	1.2
Nondurables less food & beverages .....	194.004	196.177	200.045	5.4	3.1	2.0
Nondurables less food, beverages, and apparel .....	242.974	245.039	249.799	6.0	2.8	1.9
Durables .....	105.138	105.278	105.523	-2.8	0.4	0.2
Services.....	274.870	274.338	274.739	2.2	0.0	0.1
Rent of shelter(2).....	247.271	247.646	248.332	2.6	0.4	0.3
Transportation services .....	304.810	305.842	307.520	2.9	0.9	0.5
Other services .....	310.890	307.696	306.731	-0.5	-1.3	-0.3
<b>Special aggregate indexes:</b>						

Note: See footnotes at end of table.

**Table 2. Consumer Price Index for Urban Wage Earners and Clerical Workers (CPI-W): Indexes and percent changes for selected periods Midwest (1982-84=100 unless otherwise noted) - Continued**

Item and Group	Indexes			Percent change from-		
	Feb. 2017	Mar. 2017	Apr. 2017	Apr. 2016	Feb. 2017	Mar. 2017
All items less medical care .....	212.399	212.623	213.580	1.6	0.6	0.5
All items less food .....	219.025	219.180	220.195	2.1	0.5	0.5
All items less shelter.....	215.535	215.620	216.612	1.3	0.5	0.5
Commodities less food .....	151.040	152.064	153.866	1.7	1.9	1.2
Nondurables .....	217.296	218.557	220.693	2.4	1.6	1.0
Nondurables less food.....	196.724	198.812	202.491	5.1	2.9	1.9
Nondurables less food and apparel.....	241.761	243.689	248.062	5.6	2.6	1.8
Services less rent of shelter(2).....	279.462	278.009	278.068	1.8	-0.5	0.0
Services less medical care services.....	258.758	258.341	258.774	2.1	0.0	0.2
Energy .....	189.751	190.961	195.884	9.8	3.2	2.6
All items less energy .....	228.394	228.435	228.871	1.0	0.2	0.2
All items less food and energy .....	226.292	226.299	226.778	1.2	0.2	0.2
Commodities less food and energy commodities .....	146.977	147.582	148.189	-0.8	0.8	0.4
Energy commodities.....	203.338	207.152	216.746	14.2	6.6	4.6
Services less energy services .....	286.747	286.307	286.692	2.0	0.0	0.1

Footnotes(1) This index series was calculated using a Laspeyres estimator. All other item stratum index series were calculated using a geometric means estimator.

(2) Index is on a December 1984=100 base.

(3) Indexes on a December 1997=100 base.

(4) Special index based on a substantially smaller sample.

(5) Indexes on a December 1993=100 base.

Regions defined as the four Census regions. Midwest includes Illinois, Indiana, Iowa, Kansas, Michigan, Minnesota, Missouri, Nebraska, North Dakota, Ohio, South Dakota, and Wisconsin.

NOTE: Index applies to a month as a whole, not to any specific date. Data not seasonally adjusted.