



For Release: Wednesday, June 14, 2017

17-830-KAN

MOUNTAIN-PLAINS INFORMATION OFFICE: Kansas City, Mo.

Technical information: (816) 285-7000 BLSInfoKansasCity@bls.gov www.bls.gov/regions/mountain-plains

Media contact: (816) 285-7000

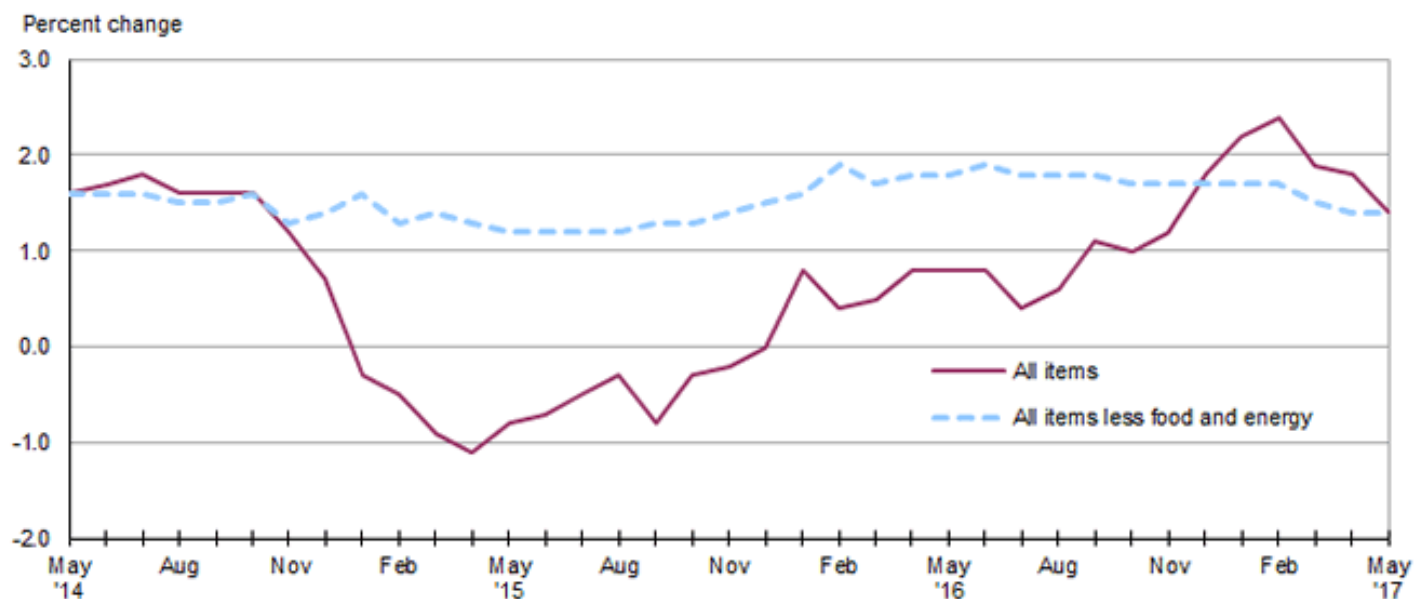
## Consumer Price Index, Midwest Region – May 2017

### Prices in the Midwest unchanged in May and 1.4 percent higher over the year

The May Consumer Price Index for All Urban Consumers (CPI-U) in the Midwest was unchanged due to offsetting movements within the index, the U.S. Bureau of Labor Statistics reported today. Higher costs for shelter (0.4 percent) and lower prices for gasoline (-3.3 percent) had the largest impact on the overall index. Despite the rise in shelter costs, the broader all items less food and energy index was unchanged in May. Food prices increased 0.2 percent over the month, but energy prices were 0.7 percent lower reflecting the decline in gasoline prices. (Data in this report are not seasonally adjusted. Accordingly, month-to-month changes may reflect the impact of seasonal influences.)

The CPI-U for the Midwest rose 1.4 percent from May 2016 to May 2017. (See [chart 1](#) and [table A](#).) The energy index, which includes motor fuel and household fuels, was up 4.1 percent and food prices increased 0.4 percent. Excluding food and energy, the CPI-U advanced 1.4 percent over the year. (See [table 1](#).)

**Chart 1. Over-the-year percent change in CPI-U, Midwest region, May 2014–May 2017**



Source: U.S. Bureau of Labor Statistics.

### Food

Food prices in the Midwest increased 0.2 percent in May. The index for food at home rose 0.3 percent after registering no change in the prior month. Costs for food away from home were unchanged.

From May 2016 to May 2017, the index for food was 0.4 percent higher attributable to an increase of 1.4 percent in costs for food away from home. Prices for food at home were down 0.2 percent; this over-the-year measure has declined every month since October 2015.

## Energy

The energy index turned down 0.7 percent in May after increasing 2.4 percent in April. Lower prices for gasoline, down 3.3 percent, were largely responsible for the decrease in the energy component. Prices for electricity and utility (piped) gas service rose 2.0 and 1.2 percent, respectively.

Energy costs increased 4.1 percent from May 2016 to May 2017 led by a 15.4-percent rise in costs for utility (piped) gas service. Higher prices for gasoline (2.4 percent) and electricity (1.3 percent) also contributed to the over-the-year increase.

## All items less food and energy

The index for all items less food and energy for the Midwest was unchanged in May following an increase of 0.2 percent in April. Shelter costs advanced 0.4 percent and had the largest upward impact on the index for May. Expenditure categories registering lower prices over the month included apparel (-1.5 percent), recreation (-0.4 percent), and new vehicles (-0.5 percent).

The index for all items less food and energy was up 1.4 percent from May 2016 to May 2017. Higher costs for shelter (2.8 percent) led the advance.

The Midwest Consumer Price Index for All Urban Consumers (CPI-U) stood at 229.705 in May 2017. A typical market basket of goods and services that cost \$100.00 in the 1982-84 base period cost \$229.71 in May 2017.

## CPI-W

In May, the Midwest Consumer Price Index for Urban Wage Earners and Clerical Workers (CPI-W) was 223.575, unchanged over the month. The CPI-W increased 1.2 percent over the year.

**Table A. Midwest region CPI-U 1-month and 12-month percent changes, all items index, not seasonally adjusted**

Month	2013		2014		2015		2016		2017	
	1-month	12-month	1-month	12-month	1-month	12-month	1-month	12-month	1-month	12-month
January.....	0.1	1.3	0.5	1.4	-0.6	-0.3	0.3	0.8	0.7	2.2
February.....	1.1	2.2	0.6	0.9	0.3	-0.5	0.0	0.4	0.2	2.4
March.....	0.2	1.4	0.9	1.5	0.6	-0.9	0.6	0.5	0.1	1.9
April.....	-0.1	1.2	0.3	1.9	0.1	-1.1	0.4	0.8	0.4	1.8
May.....	0.5	1.8	0.2	1.6	0.4	-0.8	0.4	0.8	0.0	1.4
June.....	0.3	2.2	0.5	1.7	0.5	-0.7	0.6	0.8		
July.....	-0.4	1.8	-0.3	1.8	0.0	-0.5	-0.5	0.4		
August.....	0.1	1.2	-0.2	1.6	0.0	-0.3	0.1	0.6		
September.....	0.1	1.0	0.1	1.6	-0.3	-0.8	0.2	1.1		
October.....	-0.5	0.8	-0.5	1.6	-0.1	-0.3	-0.1	1.0		
November.....	-0.2	1.0	-0.6	1.2	-0.5	-0.2	-0.3	1.2		
December.....	-0.2	1.0	-0.7	0.7	-0.6	0.0	0.1	1.8		

**The June 2017 Consumer Price Index for the Midwest region is scheduled to be released on Friday, July 14, 2017.**

## Technical Note

The Consumer Price Index (CPI) is a measure of the average change in prices over time in a fixed market basket of goods and services. The Bureau of Labor Statistics publishes CPIs for two population groups: (1) a CPI for All Urban Consumers (CPI-U) which covers approximately 89 percent of the total population and (2) a CPI for Urban Wage Earners and Clerical Workers (CPI-W) which covers approximately 28 percent of the total population. The CPI-U includes, in addition to wage earners and clerical workers, groups such as professional, managerial, and technical workers, the self-employed, short-term workers, the unemployed, and retirees and others not in the labor force.

The CPI is based on prices of food, clothing, shelter, and fuels, transportation fares, charges for doctors' and dentists' services, drugs, and the other goods and services that people buy for day-to-day living. Each month, prices are collected in 87 urban areas across the country from about 6,000 housing units and approximately 24,000 retail establishments—department stores, supermarkets, hospitals, filling stations, and other types of stores and service establishments. All taxes directly associated with the purchase and use of items are included in the index.

The index measures price changes from a designated reference date (1982-84) that equals 100.0. An increase of 16.5 percent, for example, is shown as 116.5. This change can also be expressed in dollars as follows: the price of a base period "market basket" of goods and services in the CPI has risen from \$10 in 1982-84 to \$11.65. For further details see the CPI home page on the Internet at [www.bls.gov/cpi](http://www.bls.gov/cpi) and the BLS Handbook of Methods, Chapter 17, The Consumer Price Index, available on the Internet at [www.bls.gov/opub/hom/homch17\\_a.htm](http://www.bls.gov/opub/hom/homch17_a.htm).

In calculating the index, price changes for the various items in each location are averaged together with weights that represent their importance in the spending of the appropriate population group. Local data are then combined to obtain a U.S. city average. Because the sample size of a local area is smaller, the local area index is subject to substantially more sampling and other measurement error than the national index. In addition, local indexes are not adjusted for seasonal influences. As a result, local area indexes show greater volatility than the national index, although their long-term trends are quite similar. **NOTE: Area indexes do not measure differences in the level of prices between areas; they only measure the average change in prices for each area since the base period.**

The Midwest region is comprised of Illinois, Indiana, Iowa, Kansas, Michigan, Minnesota, Missouri, Nebraska, North Dakota, Ohio, South Dakota, and Wisconsin.

Information in this release will be made available to sensory impaired individuals upon request. Voice phone: (202) 691-5200; Federal Relay Service: (800) 877-8339.

**Table 1. Consumer Price Index for All Urban Consumers (CPI-U): Indexes and percent changes for selected periods Midwest (1982-84=100 unless otherwise noted)**

Item and Group	Indexes			Percent change from-		
	Mar. 2017	Apr. 2017	May 2017	May 2016	Mar. 2017	Apr. 2017
<b>Expenditure category</b>						
All Items.....	228.824	229.682	229.705	1.4	0.4	0.0
All items (December 1977=100).....	372.309	373.705	373.743			
Food and beverages .....	240.842	241.056	241.489	0.5	0.3	0.2
Food .....	240.330	240.532	240.989	0.4	0.3	0.2
Food at home .....	225.919	226.011	226.674	-0.2	0.3	0.3
Food away from home.....	264.553	264.944	265.048	1.4	0.2	0.0
Alcoholic beverages .....	245.680	246.063	246.153	0.7	0.2	0.0
Housing .....	219.759	220.351	221.420	2.7	0.8	0.5
Shelter .....	260.312	261.077	262.233	2.8	0.7	0.4
Rent of primary residence(1).....	259.587	260.446	261.025	3.0	0.6	0.2
Owners' equiv. rent of residences(1)(2).....	264.395	265.072	265.570	2.7	0.4	0.2
Owners' equiv. rent of primary residence(1)(2).....	264.370	265.044	265.537	2.7	0.4	0.2
Fuels and utilities.....	217.084	217.646	220.578	5.1	1.6	1.3
Household energy .....	177.386	177.850	180.686	5.5	1.9	1.6
Energy services(1) .....	184.406	184.941	188.212	5.4	2.1	1.8
Electricity(1).....	198.192	199.158	203.168	1.3	2.5	2.0
Utility (piped) gas service(1).....	150.422	150.223	152.087	15.4	1.1	1.2
Household furnishings and operations.....	114.349	114.475	114.194	-0.5	-0.1	-0.2
Apparel .....	118.906	121.045	119.265	0.3	0.3	-1.5
Transportation .....	195.223	197.985	196.661	0.6	0.7	-0.7
Private transportation .....	189.455	191.861	190.495	0.8	0.5	-0.7
New and used motor vehicles(3).....	97.259	97.357	97.292	-1.9	0.0	-0.1
New vehicles .....	139.876	139.372	138.683	-0.7	-0.9	-0.5
New cars and trucks(3)(4) .....	98.802	98.443	97.982	-0.7	-0.8	-0.5
New cars(4) .....	136.562	136.270	135.482	0.0	-0.8	-0.6
Used cars and trucks.....	139.845	140.920	141.096	-4.6	0.9	0.1
Motor fuel .....	206.882	216.986	209.895	2.5	1.5	-3.3
Gasoline (all types).....	205.745	215.921	208.788	2.4	1.5	-3.3
Gasoline, unleaded regular(4).....	199.746	210.112	202.827	2.1	1.5	-3.5
Gasoline, Unleaded midgrade(4)(5).....	241.431	249.021	243.102	2.7	0.7	-2.4
Gasoline, unleaded premium(4).....	229.830	238.399	233.053	3.9	1.4	-2.2
Medical Care .....	479.253	479.011	478.245	2.4	-0.2	-0.2
Medical care commodities.....	389.610	389.171	388.795	4.0	-0.2	-0.1
Medical care services.....	509.274	509.103	508.201	2.0	-0.2	-0.2
Professional services .....	414.303	415.167	415.343	2.2	0.3	0.0
Recreation(3).....	121.447	121.578	121.097	1.8	-0.3	-0.4
Education and communication(3).....	137.614	136.820	136.537	-2.7	-0.8	-0.2
Other goods and services .....	412.323	413.453	414.166	1.5	0.4	0.2
<b>Commodity and Service Group</b>						
All Items.....	228.824	229.682	229.705	1.4	0.4	0.0
Commodities .....	176.752	177.904	177.144	0.0	0.2	-0.4
Commodities less food & beverages.....	145.677	147.169	145.955	-0.3	0.2	-0.8
Nondurables less food & beverages .....	188.947	192.108	189.499	1.1	0.3	-1.4
Nondurables less food, beverages, and apparel .....	234.914	238.749	235.593	1.3	0.3	-1.3
Durables .....	103.652	103.805	103.708	-2.2	0.1	-0.1
Services.....	282.517	283.077	283.900	2.4	0.5	0.3
Rent of shelter(2).....	267.501	268.285	269.496	2.8	0.7	0.5
Transportation services .....	304.921	307.524	308.659	2.7	1.2	0.4

Note: See footnotes at end of table.

**Table 1. Consumer Price Index for All Urban Consumers (CPI-U): Indexes and percent changes for selected periods Midwest (1982-84=100 unless otherwise noted) - Continued**

Item and Group	Indexes			Percent change from-		
	Mar. 2017	Apr. 2017	May 2017	May 2016	Mar. 2017	Apr. 2017
Other services .....	335.480	334.651	333.809	0.4	-0.5	-0.3
<b>Special aggregate indexes:</b>						
All items less medical care .....	216.968	217.879	217.940	1.3	0.4	0.0
All items less food .....	226.834	227.797	227.750	1.6	0.4	0.0
All items less shelter.....	219.735	220.635	220.255	0.9	0.2	-0.2
Commodities less food .....	148.811	150.281	149.095	-0.3	0.2	-0.8
Nondurables .....	214.506	216.276	215.106	0.7	0.3	-0.5
Nondurables less food.....	191.943	194.949	192.491	1.1	0.3	-1.3
Nondurables less food and apparel.....	234.487	237.998	235.144	1.3	0.3	-1.2
Services less rent of shelter(2).....	315.348	315.697	316.146	1.9	0.3	0.1
Services less medical care services.....	265.616	266.229	267.175	2.4	0.6	0.4
Energy .....	190.872	195.496	194.062	4.1	1.7	-0.7
All items less energy .....	235.410	235.908	236.075	1.2	0.3	0.1
All items less food and energy .....	235.232	235.785	235.900	1.4	0.3	0.0
Commodities less food and energy commodities .....	144.920	145.431	144.929	-0.8	0.0	-0.3
Energy commodities.....	206.720	216.339	209.325	2.7	1.3	-3.2
Services less energy services .....	295.040	295.607	296.177	2.2	0.4	0.2

Footnotes(1) This index series was calculated using a Laspeyres estimator. All other item stratum index series were calculated using a geometric means estimator.

(2) Index is on a December 1982=100 base.

(3) Indexes on a December 1997=100 base.

(4) Special index based on a substantially smaller sample.

(5) Indexes on a December 1993=100 base.

Regions defined as the four Census regions. Midwest includes Illinois, Indiana, Iowa, Kansas, Michigan, Minnesota, Missouri, Nebraska, North Dakota, Ohio, South Dakota, and Wisconsin.

NOTE: Index applies to a month as a whole, not to any specific date. Data not seasonally adjusted.

**Table 2. Consumer Price Index for Urban Wage Earners and Clerical Workers (CPI-W): Indexes and percent changes for selected periods Midwest (1982-84=100 unless otherwise noted)**

Item and Group	Indexes			Percent change from-		
	Mar. 2017	Apr. 2017	May 2017	May 2016	Mar. 2017	Apr. 2017
<b>Expenditure category</b>						
All Items.....	222.671	223.577	223.575	1.2	0.4	0.0
All items (December 1977=100).....	360.109	361.573	361.571			
Food and beverages .....	240.395	240.588	241.107	0.3	0.3	0.2
Food .....	239.831	240.033	240.581	0.3	0.3	0.2
Food at home .....	226.238	226.316	227.031	-0.3	0.4	0.3
Food away from home.....	265.546	266.003	266.201	1.3	0.2	0.1
Alcoholic beverages .....	247.850	247.886	247.930	0.8	0.0	0.0
Housing .....	214.753	215.300	216.239	2.7	0.7	0.4
Shelter .....	249.247	249.938	250.764	2.7	0.6	0.3
Rent of primary residence(1).....	260.233	261.098	261.657	3.0	0.5	0.2
Owners' equiv. rent of residences(1)(2).....	246.367	246.979	247.408	2.7	0.4	0.2
Owners' equiv. rent of primary residence(1)(2).....	246.361	246.972	247.401	2.7	0.4	0.2
Fuels and utilities.....	218.253	218.824	221.758	5.0	1.6	1.3
Household energy .....	178.265	178.752	181.549	5.4	1.8	1.6
Energy services(1) .....	183.871	184.412	187.606	5.1	2.0	1.7
Electricity(1).....	196.622	197.468	201.420	1.2	2.4	2.0
Utility (piped) gas service(1).....	151.742	151.719	153.407	15.6	1.1	1.1
Household furnishings and operations.....	112.114	112.176	112.003	-0.9	-0.1	-0.2
Apparel .....	116.868	119.304	117.574	0.5	0.6	-1.5
Transportation .....	191.812	194.703	193.291	0.3	0.8	-0.7
Private transportation .....	188.251	191.008	189.555	0.4	0.7	-0.8
New and used motor vehicles(3).....	96.655	96.914	96.952	-2.6	0.3	0.0
New vehicles .....	143.165	142.541	141.898	-0.8	-0.9	-0.5
Used cars and trucks.....	140.374	141.436	141.604	-4.6	0.9	0.1
Motor fuel .....	207.244	217.303	210.279	2.3	1.5	-3.2
Gasoline (all types).....	206.006	216.135	209.080	2.3	1.5	-3.3
Gasoline, unleaded regular(4).....	199.830	210.151	202.965	2.1	1.6	-3.4
Gasoline, unleaded midgrade(4)(5).....	241.333	248.767	242.796	2.6	0.6	-2.4
Gasoline, unleaded premium(4).....	229.518	237.977	232.684	3.8	1.4	-2.2
Medical Care .....	484.826	484.383	483.564	2.3	-0.3	-0.2
Medical care commodities.....	381.467	380.291	380.008	3.7	-0.4	-0.1
Medical care services.....	516.796	516.619	515.617	2.0	-0.2	-0.2
Professional services .....	416.540	417.329	417.520	2.1	0.2	0.0
Recreation(3).....	116.727	117.073	117.037	1.7	0.3	0.0
Education and communication(3).....	128.624	127.522	127.204	-3.8	-1.1	-0.2
Other goods and services .....	460.521	462.509	463.284	2.0	0.6	0.2
<b>Commodity and Service Group</b>						
All Items.....	222.671	223.577	223.575	1.2	0.4	0.0
Commodities .....	178.934	180.335	179.541	-0.1	0.3	-0.4
Commodities less food & beverages.....	149.107	150.940	149.654	-0.4	0.4	-0.9
Nondurables less food & beverages .....	196.177	200.045	197.108	1.3	0.5	-1.5
Nondurables less food, beverages, and apparel .....	245.039	249.799	246.119	1.5	0.4	-1.5
Durables .....	105.278	105.523	105.512	-2.7	0.2	0.0
Services.....	274.338	274.739	275.578	2.2	0.5	0.3
Rent of shelter(2).....	247.646	248.332	249.162	2.8	0.6	0.3
Transportation services .....	305.842	307.520	308.970	3.1	1.0	0.5
Other services .....	307.696	306.731	306.541	-0.4	-0.4	-0.1
<b>Special aggregate indexes:</b>						

Note: See footnotes at end of table.

**Table 2. Consumer Price Index for Urban Wage Earners and Clerical Workers (CPI-W): Indexes and percent changes for selected periods Midwest (1982-84=100 unless otherwise noted) - Continued**

Item and Group	Indexes			Percent change from-		
	Mar. 2017	Apr. 2017	May 2017	May 2016	Mar. 2017	Apr. 2017
All items less medical care .....	212.623	213.580	213.610	1.1	0.5	0.0
All items less food .....	219.180	220.195	220.105	1.4	0.4	0.0
All items less shelter.....	215.620	216.612	216.315	0.6	0.3	-0.1
Commodities less food .....	152.064	153.866	152.603	-0.4	0.4	-0.8
Nondurables .....	218.557	220.693	219.389	0.8	0.4	-0.6
Nondurables less food.....	198.812	202.491	199.701	1.2	0.4	-1.4
Nondurables less food and apparel.....	243.689	248.062	244.688	1.4	0.4	-1.4
Services less rent of shelter(2).....	278.009	278.068	278.841	1.7	0.3	0.3
Services less medical care services.....	258.341	258.774	259.720	2.2	0.5	0.4
Energy .....	190.961	195.884	194.116	3.8	1.7	-0.9
All items less energy .....	228.435	228.871	229.080	1.0	0.3	0.1
All items less food and energy .....	226.299	226.778	226.924	1.1	0.3	0.1
Commodities less food and energy commodities .....	147.582	148.189	147.789	-1.1	0.1	-0.3
Energy commodities.....	207.152	216.746	209.868	2.7	1.3	-3.2
Services less energy services .....	286.307	286.692	287.247	2.0	0.3	0.2

Footnotes(1) This index series was calculated using a Laspeyres estimator. All other item stratum index series were calculated using a geometric means estimator.

(2) Index is on a December 1984=100 base.

(3) Indexes on a December 1997=100 base.

(4) Special index based on a substantially smaller sample.

(5) Indexes on a December 1993=100 base.

Regions defined as the four Census regions. Midwest includes Illinois, Indiana, Iowa, Kansas, Michigan, Minnesota, Missouri, Nebraska, North Dakota, Ohio, South Dakota, and Wisconsin.

NOTE: Index applies to a month as a whole, not to any specific date. Data not seasonally adjusted.