



For Release: Friday, July 14, 2017

17-1002-KAN

MOUNTAIN-PLAINS INFORMATION OFFICE: Kansas City, Mo.

Technical information: (816) 285-7000 BLSInfoKansasCity@bls.gov www.bls.gov/regions/mountain-plains

Media contact: (816) 285-7000

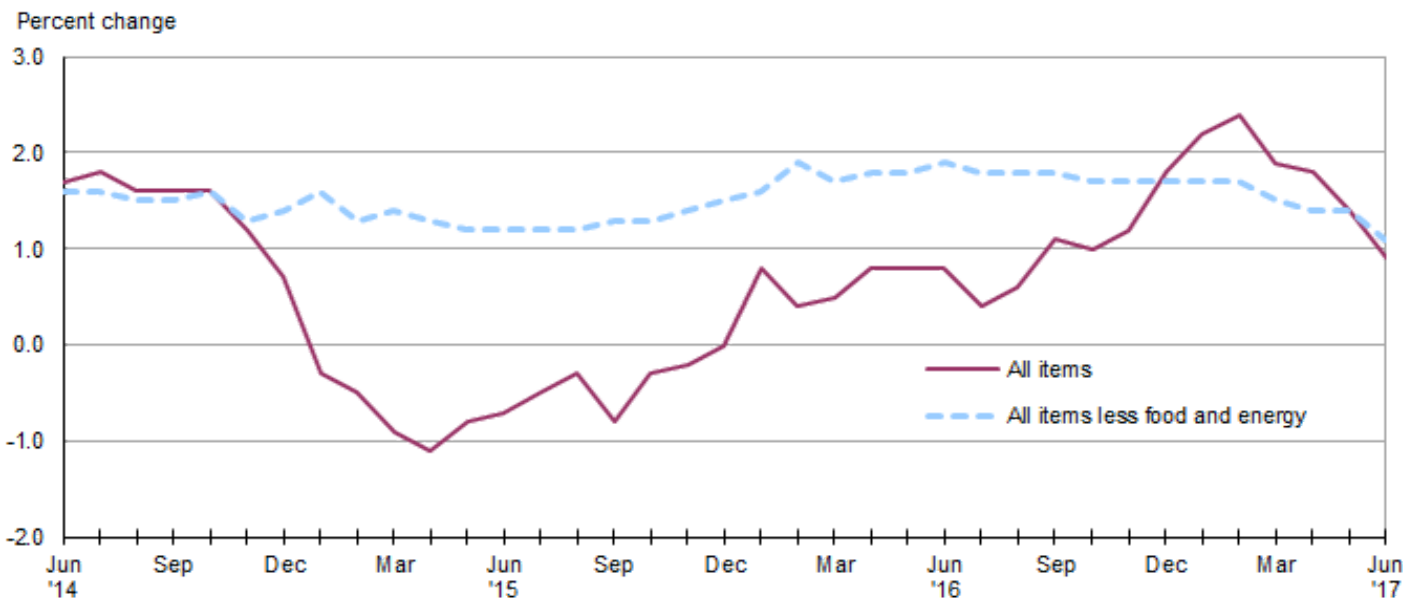
## Consumer Price Index, Midwest Region – June 2017

### Prices in the Midwest unchanged in June and 0.9 percent higher over the year

The Consumer Price Index for All Urban Consumers (CPI-U) in the Midwest was unchanged for the second month in a row in June, the U.S. Bureau of Labor Statistics reported today. Higher costs for electricity (8.1 percent) and shelter (0.4 percent) had the largest upward impact on the index, while lower prices for apparel (-3.1 percent) and gasoline (-1.7 percent) had the largest offsetting movements. The all items less food and energy index was essentially unchanged (-0.1 percent) in June, food prices were down 0.4 percent, and energy costs rose 2.2 percent. (Data in this report are not seasonally adjusted. Accordingly, month-to-month changes may reflect the impact of seasonal influences.)

The CPI-U for the Midwest rose 0.9 percent from June 2016 to June 2017. (See [chart 1](#) and [table A](#).) The energy index, which includes motor fuel and household fuels, registered little change (-0.1 percent) and food prices increased 0.3 percent. Excluding food and energy, the CPI-U advanced 1.1 percent over the year. (See [table 1](#).)

**Chart 1. Over-the-year percent change in CPI-U, Midwest region, June 2014–June 2017**



Source: U.S. Bureau of Labor Statistics.

## Food

Food prices in the Midwest were 0.4 percent lower in June. Costs for food away from home were down 0.4 percent while prices for food at home declined 0.3 percent.

From June 2016 to June 2017, the index for food was 0.3 percent higher attributable to an increase of 0.9 percent in costs for food away from home. Prices for food at home were little changed (-0.1 percent).

## Energy

The energy index turned up 2.2 percent in June following a decline of 0.7 percent in May. Higher prices for electricity, up 8.1 percent, were largely responsible for the increase in the energy component. Costs for utility (piped) gas service also contributed to the increase with an advance of 1.2 percent, while lower prices for gasoline (-1.7 percent) moderated the overall gain.

Energy costs were essentially unchanged (-0.1 percent) from June 2016 to June 2017 due to mixed movements within the index. Higher prices for utility (piped) gas service (15.2 percent) and electricity (3.2 percent) were more than offset by a decline in costs for gasoline (-7.3 percent).

## All items less food and energy

The index for all items less food and energy for the Midwest was little changed, -0.1 percent, in June after registering no change in May. A 3.1-percent decrease in apparel prices had the largest downward impact on the index. Among the other expenditure categories that declined over the month were new and used motor vehicles (-0.3 percent) and education and communication (-0.3 percent). Moderating the overall change, shelter costs advanced 0.4 percent for the second month in a row. Expenditure categories registering no change in June included recreation and medical care.

The index for all items less food and energy was up 1.1 percent from June 2016 to June 2017. Higher costs for shelter (2.6 percent) led the advance.

The Midwest Consumer Price Index for All Urban Consumers (CPI-U) stood at 229.780 in June 2017. A typical market basket of goods and services that cost \$100.00 in the 1982-84 base period cost \$229.78 in June 2017.

## CPI-W

In June, the Midwest Consumer Price Index for Urban Wage Earners and Clerical Workers (CPI-W) was 223.625, unchanged over the month. The CPI-W increased 0.6 percent over the year.

**Table A. Midwest region CPI-U 1-month and 12-month percent changes, all items index, not seasonally adjusted**

Month	2013		2014		2015		2016		2017	
	1-month	12-month	1-month	12-month	1-month	12-month	1-month	12-month	1-month	12-month
January.....	0.1	1.3	0.5	1.4	-0.6	-0.3	0.3	0.8	0.7	2.2
February.....	1.1	2.2	0.6	0.9	0.3	-0.5	0.0	0.4	0.2	2.4
March.....	0.2	1.4	0.9	1.5	0.6	-0.9	0.6	0.5	0.1	1.9
April.....	-0.1	1.2	0.3	1.9	0.1	-1.1	0.4	0.8	0.4	1.8
May.....	0.5	1.8	0.2	1.6	0.4	-0.8	0.4	0.8	0.0	1.4
June.....	0.3	2.2	0.5	1.7	0.5	-0.7	0.6	0.8	0.0	0.9
July.....	-0.4	1.8	-0.3	1.8	0.0	-0.5	-0.5	0.4		
August.....	0.1	1.2	-0.2	1.6	0.0	-0.3	0.1	0.6		
September.....	0.1	1.0	0.1	1.6	-0.3	-0.8	0.2	1.1		
October.....	-0.5	0.8	-0.5	1.6	-0.1	-0.3	-0.1	1.0		

**Table A. Midwest region CPI-U 1-month and 12-month percent changes, all items index, not seasonally adjusted - Continued**

Month	2013		2014		2015		2016		2017	
	1-month	12-month	1-month	12-month	1-month	12-month	1-month	12-month	1-month	12-month
November.....	-0.2	1.0	-0.6	1.2	-0.5	-0.2	-0.3	1.2		
December.....	-0.2	1.0	-0.7	0.7	-0.6	0.0	0.1	1.8		

**The July 2017 Consumer Price Index for the Midwest region is scheduled to be released on Friday, August 11, 2017.**

### Technical Note

The Consumer Price Index (CPI) is a measure of the average change in prices over time in a fixed market basket of goods and services. The Bureau of Labor Statistics publishes CPIs for two population groups: (1) a CPI for All Urban Consumers (CPI-U) which covers approximately 89 percent of the total population and (2) a CPI for Urban Wage Earners and Clerical Workers (CPI-W) which covers approximately 28 percent of the total population. The CPI-U includes, in addition to wage earners and clerical workers, groups such as professional, managerial, and technical workers, the self-employed, short-term workers, the unemployed, and retirees and others not in the labor force.

The CPI is based on prices of food, clothing, shelter, and fuels, transportation fares, charges for doctors' and dentists' services, drugs, and the other goods and services that people buy for day-to-day living. Each month, prices are collected in 87 urban areas across the country from about 6,000 housing units and approximately 24,000 retail establishments—department stores, supermarkets, hospitals, filling stations, and other types of stores and service establishments. All taxes directly associated with the purchase and use of items are included in the index.

The index measures price changes from a designated reference date (1982-84) that equals 100.0. An increase of 16.5 percent, for example, is shown as 116.5. This change can also be expressed in dollars as follows: the price of a base period "market basket" of goods and services in the CPI has risen from \$10 in 1982-84 to \$11.65. For further details see the CPI home page on the Internet at [www.bls.gov/cpi](http://www.bls.gov/cpi) and the BLS Handbook of Methods, Chapter 17, The Consumer Price Index, available on the Internet at [www.bls.gov/opub/hom/homch17\\_a.htm](http://www.bls.gov/opub/hom/homch17_a.htm).

In calculating the index, price changes for the various items in each location are averaged together with weights that represent their importance in the spending of the appropriate population group. Local data are then combined to obtain a U.S. city average. Because the sample size of a local area is smaller, the local area index is subject to substantially more sampling and other measurement error than the national index. In addition, local indexes are not adjusted for seasonal influences. As a result, local area indexes show greater volatility than the national index, although their long-term trends are quite similar. **NOTE: Area indexes do not measure differences in the level of prices between areas; they only measure the average change in prices for each area since the base period.**

The Midwest region is comprised of Illinois, Indiana, Iowa, Kansas, Michigan, Minnesota, Missouri, Nebraska, North Dakota, Ohio, South Dakota, and Wisconsin.

Information in this release will be made available to sensory impaired individuals upon request. Voice phone: (202) 691-5200; Federal Relay Service: (800) 877-8339.



**Table 1. Consumer Price Index for All Urban Consumers (CPI-U): Indexes and percent changes for selected periods Midwest (1982-84=100 unless otherwise noted)**

Item and Group	Indexes			Percent change from-		
	Apr. 2017	May 2017	Jun. 2017	Jun. 2016	Apr. 2017	May 2017
<b>Expenditure category</b>						
All Items.....	229.682	229.705	229.780	0.9	0.0	0.0
All items (December 1977=100).....	373.705	373.743	373.866			
Food and beverages .....	241.056	241.489	240.701	0.3	-0.1	-0.3
Food .....	240.532	240.989	240.139	0.3	-0.2	-0.4
Food at home .....	226.011	226.674	226.024	-0.1	0.0	-0.3
Food away from home.....	264.944	265.048	263.857	0.9	-0.4	-0.4
Alcoholic beverages .....	246.063	246.153	246.259	0.7	0.1	0.0
Housing .....	220.351	221.420	223.325	2.7	1.3	0.9
Shelter .....	261.077	262.233	263.258	2.6	0.8	0.4
Rent of primary residence(1).....	260.446	261.025	261.592	2.9	0.4	0.2
Owners' equiv. rent of residences(1)(2).....	265.072	265.570	266.170	2.7	0.4	0.2
Owners' equiv. rent of primary residence(1)(2).....	265.044	265.537	266.136	2.7	0.4	0.2
Fuels and utilities.....	217.646	220.578	230.574	6.0	5.9	4.5
Household energy .....	177.850	180.686	190.907	6.5	7.3	5.7
Energy services(1) .....	184.941	188.212	199.401	6.5	7.8	5.9
Electricity(1).....	199.158	203.168	219.647	3.2	10.3	8.1
Utility (piped) gas service(1).....	150.223	152.087	153.965	15.2	2.5	1.2
Household furnishings and operations.....	114.475	114.194	113.930	-0.6	-0.5	-0.2
Apparel .....	121.045	119.265	115.627	-1.0	-4.5	-3.1
Transportation .....	197.985	196.661	195.076	-1.9	-1.5	-0.8
Private transportation .....	191.861	190.495	189.157	-1.9	-1.4	-0.7
New and used motor vehicles(3).....	97.357	97.292	96.986	-2.2	-0.4	-0.3
New vehicles .....	139.372	138.683	138.148	-1.1	-0.9	-0.4
New cars and trucks(3)(4) .....	98.443	97.982	97.598	-1.2	-0.9	-0.4
New cars(4) .....	136.270	135.482	134.571	-0.7	-1.2	-0.7
Used cars and trucks.....	140.920	141.096	140.044	-4.8	-0.6	-0.7
Motor fuel .....	216.986	209.895	206.410	-7.1	-4.9	-1.7
Gasoline (all types).....	215.921	208.788	205.304	-7.3	-4.9	-1.7
Gasoline, unleaded regular(4).....	210.112	202.827	199.448	-7.7	-5.1	-1.7
Gasoline, Unleaded midgrade(4)(5).....	249.021	243.102	238.057	-6.1	-4.4	-2.1
Gasoline, unleaded premium(4).....	238.399	233.053	229.497	-4.6	-3.7	-1.5
Medical Care .....	479.011	478.245	478.231	2.3	-0.2	0.0
Medical care commodities.....	389.171	388.795	389.037	2.8	0.0	0.1
Medical care services.....	509.103	508.201	508.096	2.1	-0.2	0.0
Professional services .....	415.167	415.343	414.938	2.1	-0.1	-0.1
Recreation(3).....	121.578	121.097	121.091	1.1	-0.4	0.0
Education and communication(3).....	136.820	136.537	136.183	-2.9	-0.5	-0.3
Other goods and services .....	413.453	414.166	413.821	1.1	0.1	-0.1
<b>Commodity and Service Group</b>						
All Items.....	229.682	229.705	229.780	0.9	0.0	0.0
Commodities .....	177.904	177.144	175.889	-1.2	-1.1	-0.7
Commodities less food & beverages.....	147.169	145.955	144.551	-2.1	-1.8	-1.0
Nondurables less food & beverages .....	192.108	189.499	187.076	-1.9	-2.6	-1.3
Nondurables less food, beverages, and apparel .....	238.749	235.593	233.934	-2.2	-2.0	-0.7
Durables .....	103.805	103.708	103.157	-2.4	-0.6	-0.5
Services.....	283.077	283.900	285.334	2.2	0.8	0.5
Rent of shelter(2).....	268.285	269.496	270.545	2.6	0.8	0.4
Transportation services .....	307.524	308.659	307.070	2.2	-0.1	-0.5

Note: See footnotes at end of table.

**Table 1. Consumer Price Index for All Urban Consumers (CPI-U): Indexes and percent changes for selected periods Midwest (1982-84=100 unless otherwise noted) - Continued**

Item and Group	Indexes			Percent change from-		
	Apr. 2017	May 2017	Jun. 2017	Jun. 2016	Apr. 2017	May 2017
Other services .....	334.651	333.809	333.611	-0.3	-0.3	-0.1
<b>Special aggregate indexes:</b>						
All items less medical care .....	217.879	217.940	218.019	0.7	0.1	0.0
All items less food .....	227.797	227.750	227.974	1.0	0.1	0.1
All items less shelter.....	220.635	220.255	219.993	0.1	-0.3	-0.1
Commodities less food .....	150.281	149.095	147.724	-2.0	-1.7	-0.9
Nondurables .....	216.276	215.106	213.451	-0.7	-1.3	-0.8
Nondurables less food.....	194.949	192.491	190.209	-1.7	-2.4	-1.2
Nondurables less food and apparel.....	237.998	235.144	233.649	-2.0	-1.8	-0.6
Services less rent of shelter(2).....	315.697	316.146	318.083	1.8	0.8	0.6
Services less medical care services.....	266.229	267.175	268.720	2.2	0.9	0.6
Energy .....	195.496	194.062	198.416	-0.1	1.5	2.2
All items less energy .....	235.908	236.075	235.729	0.9	-0.1	-0.1
All items less food and energy .....	235.785	235.900	235.645	1.1	-0.1	-0.1
Commodities less food and energy commodities .....	145.431	144.929	143.785	-1.2	-1.1	-0.8
Energy commodities.....	216.339	209.325	205.849	-6.6	-4.8	-1.7
Services less energy services .....	295.607	296.177	296.590	1.9	0.3	0.1

Footnotes(1) This index series was calculated using a Laspeyres estimator. All other item stratum index series were calculated using a geometric means estimator.

(2) Index is on a December 1982=100 base.

(3) Indexes on a December 1997=100 base.

(4) Special index based on a substantially smaller sample.

(5) Indexes on a December 1993=100 base.

Regions defined as the four Census regions. Midwest includes Illinois, Indiana, Iowa, Kansas, Michigan, Minnesota, Missouri, Nebraska, North Dakota, Ohio, South Dakota, and Wisconsin.

NOTE: Index applies to a month as a whole, not to any specific date. Data not seasonally adjusted.

**Table 2. Consumer Price Index for Urban Wage Earners and Clerical Workers (CPI-W): Indexes and percent changes for selected periods Midwest (1982-84=100 unless otherwise noted)**

Item and Group	Indexes			Percent change from-		
	Apr. 2017	May 2017	Jun. 2017	Jun. 2016	Apr. 2017	May 2017
<b>Expenditure category</b>						
All Items.....	223.577	223.575	223.625	0.6	0.0	0.0
All items (December 1977=100).....	361.573	361.571	361.651			
Food and beverages .....	240.588	241.107	240.324	0.2	-0.1	-0.3
Food .....	240.033	240.581	239.755	0.1	-0.1	-0.3
Food at home .....	226.316	227.031	226.382	-0.3	0.0	-0.3
Food away from home.....	266.003	266.201	265.018	0.8	-0.4	-0.4
Alcoholic beverages .....	247.886	247.930	247.837	0.7	0.0	0.0
Housing .....	215.300	216.239	218.158	2.8	1.3	0.9
Shelter .....	249.938	250.764	251.552	2.6	0.6	0.3
Rent of primary residence(1).....	261.098	261.657	262.225	2.9	0.4	0.2
Owners' equiv. rent of residences(1)(2).....	246.979	247.408	247.956	2.6	0.4	0.2
Owners' equiv. rent of primary residence(1)(2).....	246.972	247.401	247.946	2.6	0.4	0.2
Fuels and utilities.....	218.824	221.758	231.734	5.9	5.9	4.5
Household energy .....	178.752	181.549	191.653	6.5	7.2	5.6
Energy services(1) .....	184.412	187.606	198.700	6.4	7.7	5.9
Electricity(1).....	197.468	201.420	217.404	3.2	10.1	7.9
Utility (piped) gas service(1).....	151.719	153.407	155.296	15.3	2.4	1.2
Household furnishings and operations.....	112.176	112.003	111.753	-0.9	-0.4	-0.2
Apparel .....	119.304	117.574	114.369	0.3	-4.1	-2.7
Transportation .....	194.703	193.291	191.559	-2.6	-1.6	-0.9
Private transportation .....	191.008	189.555	187.924	-2.6	-1.6	-0.9
New and used motor vehicles(3).....	96.914	96.952	96.543	-2.9	-0.4	-0.4
New vehicles .....	142.541	141.898	141.350	-1.2	-0.8	-0.4
Used cars and trucks.....	141.436	141.604	140.551	-4.8	-0.6	-0.7
Motor fuel .....	217.303	210.279	206.544	-7.3	-5.0	-1.8
Gasoline (all types).....	216.135	209.080	205.342	-7.4	-5.0	-1.8
Gasoline, unleaded regular(4).....	210.151	202.965	199.310	-7.8	-5.2	-1.8
Gasoline, unleaded midgrade(4)(5).....	248.767	242.796	237.732	-6.3	-4.4	-2.1
Gasoline, unleaded premium(4).....	237.977	232.684	228.978	-4.7	-3.8	-1.6
Medical Care .....	484.383	483.564	483.419	2.2	-0.2	0.0
Medical care commodities.....	380.291	380.008	380.131	2.4	0.0	0.0
Medical care services.....	516.619	515.617	515.377	2.1	-0.2	0.0
Professional services .....	417.329	417.520	417.051	2.1	-0.1	-0.1
Recreation(3).....	117.073	117.037	117.155	1.4	0.1	0.1
Education and communication(3).....	127.522	127.204	126.698	-4.1	-0.6	-0.4
Other goods and services .....	462.509	463.284	463.219	1.4	0.2	0.0
<b>Commodity and Service Group</b>						
All Items.....	223.577	223.575	223.625	0.6	0.0	0.0
Commodities .....	180.335	179.541	178.263	-1.5	-1.1	-0.7
Commodities less food & beverages.....	150.940	149.654	148.221	-2.5	-1.8	-1.0
Nondurables less food & beverages .....	200.045	197.108	194.696	-2.2	-2.7	-1.2
Nondurables less food, beverages, and apparel .....	249.799	246.119	244.066	-2.8	-2.3	-0.8
Durables .....	105.523	105.512	104.881	-3.0	-0.6	-0.6
Services.....	274.739	275.578	277.036	2.1	0.8	0.5
Rent of shelter(2).....	248.332	249.162	249.936	2.6	0.6	0.3
Transportation services .....	307.520	308.970	307.506	2.5	0.0	-0.5
Other services .....	306.731	306.541	306.304	-0.9	-0.1	-0.1
<b>Special aggregate indexes:</b>						

Note: See footnotes at end of table.

**Table 2. Consumer Price Index for Urban Wage Earners and Clerical Workers (CPI-W): Indexes and percent changes for selected periods Midwest (1982-84=100 unless otherwise noted) - Continued**

Item and Group	Indexes			Percent change from-		
	Apr. 2017	May 2017	Jun. 2017	Jun. 2016	Apr. 2017	May 2017
All items less medical care .....	213.580	213.610	213.667	0.5	0.0	0.0
All items less food .....	220.195	220.105	220.295	0.7	0.0	0.1
All items less shelter.....	216.612	216.315	216.102	-0.2	-0.2	-0.1
Commodities less food .....	153.866	152.603	151.193	-2.4	-1.7	-0.9
Nondurables .....	220.693	219.389	217.739	-1.0	-1.3	-0.8
Nondurables less food.....	202.491	199.701	197.403	-2.0	-2.5	-1.2
Nondurables less food and apparel.....	248.062	244.688	242.795	-2.5	-2.1	-0.8
Services less rent of shelter(2).....	278.068	278.841	280.898	1.6	1.0	0.7
Services less medical care services.....	258.774	259.720	261.274	2.1	1.0	0.6
Energy .....	195.884	194.116	197.763	-0.7	1.0	1.9
All items less energy .....	228.871	229.080	228.702	0.8	-0.1	-0.2
All items less food and energy .....	226.778	226.924	226.630	0.9	-0.1	-0.1
Commodities less food and energy commodities .....	148.189	147.789	146.709	-1.4	-1.0	-0.7
Energy commodities.....	216.746	209.868	206.141	-6.7	-4.9	-1.8
Services less energy services .....	286.692	287.247	287.540	1.8	0.3	0.1

Footnotes(1) This index series was calculated using a Laspeyres estimator. All other item stratum index series were calculated using a geometric means estimator.

(2) Index is on a December 1984=100 base.

(3) Indexes on a December 1997=100 base.

(4) Special index based on a substantially smaller sample.

(5) Indexes on a December 1993=100 base.

Regions defined as the four Census regions. Midwest includes Illinois, Indiana, Iowa, Kansas, Michigan, Minnesota, Missouri, Nebraska, North Dakota, Ohio, South Dakota, and Wisconsin.

NOTE: Index applies to a month as a whole, not to any specific date. Data not seasonally adjusted.