



For Release: Friday, August 11, 2017

17-1134-KAN

MOUNTAIN-PLAINS INFORMATION OFFICE: Kansas City, Mo.

Technical information: (816) 285-7000 BLSInfoKansasCity@bls.gov www.bls.gov/regions/mountain-plains

Media contact: (816) 285-7000

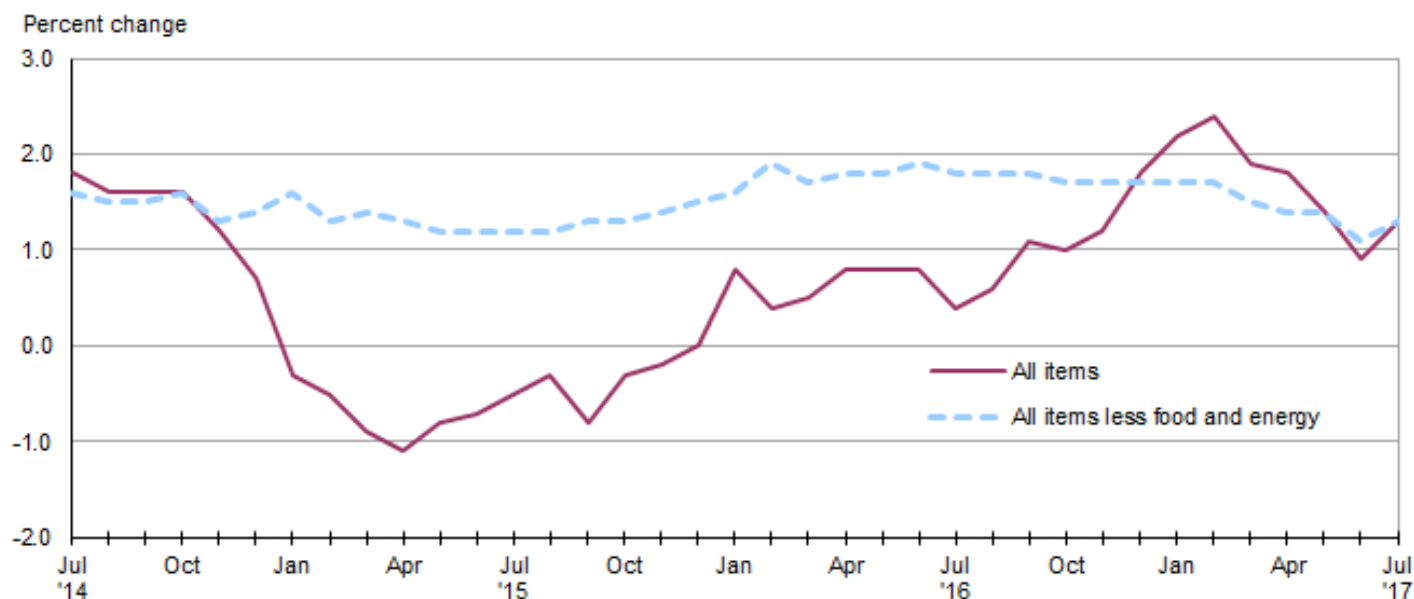
Consumer Price Index, Midwest Region – July 2017

Prices in the Midwest unchanged in July and 1.3 percent higher over the year

The Consumer Price Index for All Urban Consumers (CPI-U) in the Midwest was unchanged for the third month in a row in July, the U.S. Bureau of Labor Statistics reported today. Higher costs for recreation and medical care had the largest upward impact on the index, while lower prices for lodging away from home, airline fares, and household furnishings and operations had the largest offsetting downward movements. The all items less food and energy index was essentially unchanged (+0.1 percent) in July, energy costs were down 0.5 percent and food prices were unchanged. (Data in this report are not seasonally adjusted. Accordingly, month-to-month changes may reflect the impact of seasonal influences.)

The CPI-U for the Midwest rose 1.3 percent from July 2016 to July 2017. (See [chart 1](#) and [table A](#).) The energy index, which includes motor fuel and household fuels, rose 3.5 percent and food prices increased 0.4 percent. Excluding food and energy, the CPI-U advanced 1.3 percent over the year. (See [table 1](#).)

Chart 1. Over-the-year percent change in CPI-U, Midwest region, July 2014–July 2017



Source: U.S. Bureau of Labor Statistics.

Food

Food prices in the Midwest were unchanged from June to July. Costs for food away from home edged up 0.1 percent while prices for food at home recorded no change.

From July 2016 to July 2017, the index for food was 0.4 percent higher and attributable to an increase of 0.9 percent in costs for food away from home. Prices for food at home were little changed (+0.1 percent).

Energy

The energy index declined 0.5 percent in July following an increase of 2.2 percent in June. Lower prices for both gasoline (-1.0 percent) and utility (piped) gas service (-0.6 percent) were responsible for the decline in the energy component. A 0.2 percent increase in electricity costs in July moderated the overall decline.

Energy costs were 3.5 percent higher from July 2016 to July 2017 due to increases among all three major subcategories: utility (piped) gas service (7.6 percent), electricity (2.9 percent), and gasoline (2.4 percent).

All items less food and energy

The index for all items less food and energy for the Midwest was little changed, +0.1 percent, in July after registering little movement in June, -0.1 percent. Increases in the indexes for recreation (1.4 percent) and medical care (0.9 percent) had the largest upward impact on the index. Costs for lodging away from home, airline fares, and household furnishings and operations were down in July.

The index for all items less food and energy was up 1.3 percent from July 2016 to July 2017. Higher costs for shelter (2.5 percent), medical care (2.5 percent), and recreation (2.9 percent) led the increase. Annual declines in the indexes for education and communication (-2.8 percent) and new and used motor vehicles (-2.2 percent) only partially offset these advances.

The Midwest Consumer Price Index for All Urban Consumers (CPI-U) stood at 229.820 in July 2017. A typical market basket of goods and services that cost \$100.00 in the 1982-84 base period cost \$229.82 in July 2017.

CPI-W

In July, the Midwest Consumer Price Index for Urban Wage Earners and Clerical Workers (CPI-W) was 223.626, unchanged over the month. The CPI-W increased 1.2 percent over the year.

Table A. Midwest region CPI-U 1-month and 12-month percent changes, all items index, not seasonally adjusted

Month	2013		2014		2015		2016		2017	
	1-month	12-month	1-month	12-month	1-month	12-month	1-month	12-month	1-month	12-month
January.....	0.1	1.3	0.5	1.4	-0.6	-0.3	0.3	0.8	0.7	2.2
February.....	1.1	2.2	0.6	0.9	0.3	-0.5	0.0	0.4	0.2	2.4
March.....	0.2	1.4	0.9	1.5	0.6	-0.9	0.6	0.5	0.1	1.9
April.....	-0.1	1.2	0.3	1.9	0.1	-1.1	0.4	0.8	0.4	1.8
May.....	0.5	1.8	0.2	1.6	0.4	-0.8	0.4	0.8	0.0	1.4
June.....	0.3	2.2	0.5	1.7	0.5	-0.7	0.6	0.8	0.0	0.9
July.....	-0.4	1.8	-0.3	1.8	0.0	-0.5	-0.5	0.4	0.0	1.3
August.....	0.1	1.2	-0.2	1.6	0.0	-0.3	0.1	0.6		
September.....	0.1	1.0	0.1	1.6	-0.3	-0.8	0.2	1.1		
October.....	-0.5	0.8	-0.5	1.6	-0.1	-0.3	-0.1	1.0		
November.....	-0.2	1.0	-0.6	1.2	-0.5	-0.2	-0.3	1.2		
December.....	-0.2	1.0	-0.7	0.7	-0.6	0.0	0.1	1.8		

The August 2017 Consumer Price Index for the Midwest region is scheduled to be released on Thursday, September 14, 2017.

Technical Note

The Consumer Price Index (CPI) is a measure of the average change in prices over time in a fixed market basket of goods and services. The Bureau of Labor Statistics publishes CPIs for two population groups: (1) a CPI for All Urban Consumers (CPI-U) which covers approximately 89 percent of the total population and (2) a CPI for Urban Wage Earners and Clerical Workers (CPI-W) which covers approximately 28 percent of the total population. The CPI-U includes, in addition to wage earners and clerical workers, groups such as professional, managerial, and technical workers, the self-employed, short-term workers, the unemployed, and retirees and others not in the labor force.

The CPI is based on prices of food, clothing, shelter, and fuels, transportation fares, charges for doctors' and dentists' services, drugs, and the other goods and services that people buy for day-to-day living. Each month, prices are collected in 87 urban areas across the country from about 6,000 housing units and approximately 24,000 retail establishments—department stores, supermarkets, hospitals, filling stations, and other types of stores and service establishments. All taxes directly associated with the purchase and use of items are included in the index.

The index measures price changes from a designated reference date (1982-84) that equals 100.0. An increase of 16.5 percent, for example, is shown as 116.5. This change can also be expressed in dollars as follows: the price of a base period "market basket" of goods and services in the CPI has risen from \$10 in 1982-84 to \$11.65. For further details see the CPI home page on the Internet at www.bls.gov/cpi and the BLS Handbook of Methods, Chapter 17, The Consumer Price Index, available on the Internet at www.bls.gov/opub/hom/homch17_a.htm.

In calculating the index, price changes for the various items in each location are averaged together with weights that represent their importance in the spending of the appropriate population group. Local data are then combined to obtain a U.S. city average. Because the sample size of a local area is smaller, the local area index is subject to substantially more sampling and other measurement error than the national index. In addition, local indexes are not adjusted for seasonal influences. As a result, local area indexes show greater volatility than the national index, although their long-term trends are quite similar. **NOTE: Area indexes do not measure differences in the level of prices between areas; they only measure the average change in prices for each area since the base period.**

The Midwest region is comprised of Illinois, Indiana, Iowa, Kansas, Michigan, Minnesota, Missouri, Nebraska, North Dakota, Ohio, South Dakota, and Wisconsin.

Information in this release will be made available to sensory impaired individuals upon request. Voice phone: (202) 691-5200; Federal Relay Service: (800) 877-8339.

Table 1. Consumer Price Index for All Urban Consumers (CPI-U): Indexes and percent changes for selected periods Midwest (1982-84=100 unless otherwise noted)

Item and Group	Indexes			Percent change from-		
	May 2017	Jun. 2017	Jul. 2017	Jul. 2016	May 2017	Jun. 2017
Expenditure category						
All Items.....	229.705	229.780	229.820	1.3	0.1	0.0
All items (December 1977=100).....	373.743	373.866	373.930			
Food and beverages	241.489	240.701	240.794	0.5	-0.3	0.0
Food	240.989	240.139	240.237	0.4	-0.3	0.0
Food at home	226.674	226.024	225.959	0.1	-0.3	0.0
Food away from home.....	265.048	263.857	264.233	0.9	-0.3	0.1
Alcoholic beverages	246.153	246.259	246.288	0.9	0.1	0.0
Housing	221.420	223.325	222.809	2.3	0.6	-0.2
Shelter	262.233	263.258	262.779	2.5	0.2	-0.2
Rent of primary residence(1).....	261.025	261.592	262.237	2.9	0.5	0.2
Owners' equiv. rent of residences(1)(2).....	265.570	266.170	266.601	2.6	0.4	0.2
Owners' equiv. rent of primary residence(1)(2).....	265.537	266.136	266.561	2.5	0.4	0.2
Fuels and utilities.....	220.578	230.574	230.362	4.2	4.4	-0.1
Household energy	180.686	190.907	190.630	4.3	5.5	-0.1
Energy services(1)	188.212	199.401	199.320	4.2	5.9	0.0
Electricity(1).....	203.168	219.647	220.116	2.9	8.3	0.2
Utility (piped) gas service(1).....	152.087	153.965	152.995	7.6	0.6	-0.6
Household furnishings and operations.....	114.194	113.930	113.055	-1.3	-1.0	-0.8
Apparel	119.265	115.627	115.604	1.7	-3.1	0.0
Transportation	196.661	195.076	193.971	0.3	-1.4	-0.6
Private transportation	190.495	189.157	188.556	0.4	-1.0	-0.3
New and used motor vehicles(3).....	97.292	96.986	96.767	-2.2	-0.5	-0.2
New vehicles	138.683	138.148	137.862	-1.0	-0.6	-0.2
New cars and trucks(3)(4)	97.982	97.598	97.375	-1.0	-0.6	-0.2
New cars(4)	135.482	134.571	134.005	-0.6	-1.1	-0.4
Used cars and trucks.....	141.096	140.044	139.402	-4.7	-1.2	-0.5
Motor fuel	209.895	206.410	204.436	2.5	-2.6	-1.0
Gasoline (all types).....	208.788	205.304	203.342	2.4	-2.6	-1.0
Gasoline, unleaded regular(4).....	202.827	199.448	197.415	2.3	-2.7	-1.0
Gasoline, Unleaded midgrade(4)(5).....	243.102	238.057	237.253	3.3	-2.4	-0.3
Gasoline, unleaded premium(4).....	233.053	229.497	228.369	3.5	-2.0	-0.5
Medical Care	478.245	478.231	482.591	2.5	0.9	0.9
Medical care commodities.....	388.795	389.037	401.125	5.1	3.2	3.1
Medical care services.....	508.201	508.096	509.682	1.8	0.3	0.3
Professional services	415.343	414.938	415.702	2.4	0.1	0.2
Recreation(3).....	121.097	121.091	122.812	2.9	1.4	1.4
Education and communication(3).....	136.537	136.183	136.245	-2.8	-0.2	0.0
Other goods and services	414.166	413.821	415.468	1.8	0.3	0.4
Commodity and Service Group						
All Items.....	229.705	229.780	229.820	1.3	0.1	0.0
Commodities	177.144	175.889	175.796	0.1	-0.8	-0.1
Commodities less food & beverages.....	145.955	144.551	144.388	-0.1	-1.1	-0.1
Nondurables less food & beverages	189.499	187.076	187.425	1.7	-1.1	0.2
Nondurables less food, beverages, and apparel	235.593	233.934	234.523	1.7	-0.5	0.3
Durables	103.708	103.157	102.624	-2.3	-1.0	-0.5
Services.....	283.900	285.334	285.509	2.1	0.6	0.1
Rent of shelter(2).....	269.496	270.545	270.044	2.5	0.2	-0.2
Transportation services	308.659	307.070	305.039	2.1	-1.2	-0.7

Note: See footnotes at end of table.

Table 1. Consumer Price Index for All Urban Consumers (CPI-U): Indexes and percent changes for selected periods Midwest (1982-84=100 unless otherwise noted) - Continued

Item and Group	Indexes			Percent change from-		
	May 2017	Jun. 2017	Jul. 2017	Jul. 2016	May 2017	Jun. 2017
Other services	333.809	333.611	336.111	0.4	0.7	0.7
Special aggregate indexes:						
All items less medical care	217.940	218.019	217.854	1.2	0.0	-0.1
All items less food	227.750	227.974	228.004	1.5	0.1	0.0
All items less shelter.....	220.255	219.993	220.218	0.9	0.0	0.1
Commodities less food	149.095	147.724	147.565	0.0	-1.0	-0.1
Nondurables	215.106	213.451	213.679	1.0	-0.7	0.1
Nondurables less food.....	192.491	190.209	190.540	1.6	-1.0	0.2
Nondurables less food and apparel.....	235.144	233.649	234.185	1.6	-0.4	0.2
Services less rent of shelter(2).....	316.146	318.083	319.003	1.8	0.9	0.3
Services less medical care services.....	267.175	268.720	268.792	2.1	0.6	0.0
Energy	194.062	198.416	197.405	3.5	1.7	-0.5
All items less energy	236.075	235.729	235.873	1.2	-0.1	0.1
All items less food and energy	235.900	235.645	235.798	1.3	0.0	0.1
Commodities less food and energy commodities	144.929	143.785	143.863	-0.5	-0.7	0.1
Energy commodities.....	209.325	205.849	203.703	2.6	-2.7	-1.0
Services less energy services	296.177	296.590	296.793	2.0	0.2	0.1

Footnotes(1) This index series was calculated using a Laspeyres estimator. All other item stratum index series were calculated using a geometric means estimator.

(2) Index is on a December 1982=100 base.

(3) Indexes on a December 1997=100 base.

(4) Special index based on a substantially smaller sample.

(5) Indexes on a December 1993=100 base.

Regions defined as the four Census regions. Midwest includes Illinois, Indiana, Iowa, Kansas, Michigan, Minnesota, Missouri, Nebraska, North Dakota, Ohio, South Dakota, and Wisconsin.

NOTE: Index applies to a month as a whole, not to any specific date. Data not seasonally adjusted.

Table 2. Consumer Price Index for Urban Wage Earners and Clerical Workers (CPI-W): Indexes and percent changes for selected periods Midwest (1982-84=100 unless otherwise noted)

Item and Group	Indexes			Percent change from-		
	May 2017	Jun. 2017	Jul. 2017	Jul. 2016	May 2017	Jun. 2017
Expenditure category						
All Items.....	223.575	223.625	223.626	1.2	0.0	0.0
All items (December 1977=100).....	361.571	361.651	361.653			
Food and beverages	241.107	240.324	240.513	0.4	-0.2	0.1
Food	240.581	239.755	239.935	0.3	-0.3	0.1
Food at home	227.031	226.382	226.444	0.0	-0.3	0.0
Food away from home.....	266.201	265.018	265.439	0.9	-0.3	0.2
Alcoholic beverages	247.930	247.837	248.192	1.0	0.1	0.1
Housing	216.239	218.158	217.881	2.4	0.8	-0.1
Shelter	250.764	251.552	251.497	2.5	0.3	0.0
Rent of primary residence(1).....	261.657	262.225	262.895	2.9	0.5	0.3
Owners' equiv. rent of residences(1)(2).....	247.408	247.956	248.337	2.5	0.4	0.2
Owners' equiv. rent of primary residence(1)(2).....	247.401	247.946	248.326	2.5	0.4	0.2
Fuels and utilities.....	221.758	231.734	231.512	4.1	4.4	-0.1
Household energy	181.549	191.653	191.364	4.1	5.4	-0.2
Energy services(1)	187.606	198.700	198.680	4.1	5.9	0.0
Electricity(1).....	201.420	217.404	217.862	2.8	8.2	0.2
Utility (piped) gas service(1).....	153.407	155.296	154.433	7.5	0.7	-0.6
Household furnishings and operations.....	112.003	111.753	110.536	-1.7	-1.3	-1.1
Apparel	117.574	114.369	114.080	3.3	-3.0	-0.3
Transportation	193.291	191.559	190.617	-0.1	-1.4	-0.5
Private transportation	189.555	187.924	187.225	-0.1	-1.2	-0.4
New and used motor vehicles(3).....	96.952	96.543	96.251	-3.0	-0.7	-0.3
New vehicles	141.898	141.350	140.861	-1.1	-0.7	-0.3
Used cars and trucks.....	141.604	140.551	139.916	-4.7	-1.2	-0.5
Motor fuel	210.279	206.544	204.709	2.4	-2.6	-0.9
Gasoline (all types).....	209.080	205.342	203.524	2.4	-2.7	-0.9
Gasoline, unleaded regular(4).....	202.965	199.310	197.433	2.3	-2.7	-0.9
Gasoline, unleaded midgrade(4)(5).....	242.796	237.732	237.051	3.2	-2.4	-0.3
Gasoline, unleaded premium(4).....	232.684	228.978	227.986	3.5	-2.0	-0.4
Medical Care	483.564	483.419	488.132	2.4	0.9	1.0
Medical care commodities.....	380.008	380.131	392.829	4.8	3.4	3.3
Medical care services.....	515.617	515.377	517.196	1.8	0.3	0.4
Professional services	417.520	417.051	417.962	2.4	0.1	0.2
Recreation(3).....	117.037	117.155	117.935	2.4	0.8	0.7
Education and communication(3).....	127.204	126.698	126.707	-4.0	-0.4	0.0
Other goods and services	463.284	463.219	464.842	2.0	0.3	0.4
Commodity and Service Group						
All Items.....	223.575	223.625	223.626	1.2	0.0	0.0
Commodities	179.541	178.263	178.061	0.1	-0.8	-0.1
Commodities less food & beverages.....	149.654	148.221	147.871	-0.1	-1.2	-0.2
Nondurables less food & beverages	197.108	194.696	194.725	2.0	-1.2	0.0
Nondurables less food, beverages, and apparel	246.119	244.066	244.269	1.7	-0.8	0.1
Durables	105.512	104.881	104.280	-2.9	-1.2	-0.6
Services.....	275.578	277.036	277.252	1.9	0.6	0.1
Rent of shelter(2).....	249.162	249.936	249.880	2.5	0.3	0.0
Transportation services	308.970	307.506	306.487	2.2	-0.8	-0.3
Other services	306.541	306.304	307.372	-0.6	0.3	0.3
Special aggregate indexes:						

Note: See footnotes at end of table.

Table 2. Consumer Price Index for Urban Wage Earners and Clerical Workers (CPI-W): Indexes and percent changes for selected periods Midwest (1982-84=100 unless otherwise noted) - Continued

Item and Group	Indexes			Percent change from-		
	May 2017	Jun. 2017	Jul. 2017	Jul. 2016	May 2017	Jun. 2017
All items less medical care	213.610	213.667	213.487	1.0	-0.1	-0.1
All items less food	220.105	220.295	220.267	1.3	0.1	0.0
All items less shelter.....	216.315	216.102	216.124	0.6	-0.1	0.0
Commodities less food	152.603	151.193	150.857	-0.1	-1.1	-0.2
Nondurables	219.389	217.739	217.846	1.1	-0.7	0.0
Nondurables less food.....	199.701	197.403	197.449	1.9	-1.1	0.0
Nondurables less food and apparel.....	244.688	242.795	243.009	1.6	-0.7	0.1
Services less rent of shelter(2).....	278.841	280.898	281.387	1.3	0.9	0.2
Services less medical care services.....	259.720	261.274	261.392	1.9	0.6	0.0
Energy	194.116	197.763	196.758	3.3	1.4	-0.5
All items less energy	229.080	228.702	228.823	0.9	-0.1	0.1
All items less food and energy	226.924	226.630	226.739	1.1	-0.1	0.0
Commodities less food and energy commodities	147.789	146.709	146.638	-0.7	-0.8	0.0
Energy commodities.....	209.868	206.141	204.091	2.5	-2.8	-1.0
Services less energy services	287.247	287.540	287.786	1.7	0.2	0.1

Footnotes(1) This index series was calculated using a Laspeyres estimator. All other item stratum index series were calculated using a geometric means estimator.

(2) Index is on a December 1984=100 base.

(3) Indexes on a December 1997=100 base.

(4) Special index based on a substantially smaller sample.

(5) Indexes on a December 1993=100 base.

Regions defined as the four Census regions. Midwest includes Illinois, Indiana, Iowa, Kansas, Michigan, Minnesota, Missouri, Nebraska, North Dakota, Ohio, South Dakota, and Wisconsin.

NOTE: Index applies to a month as a whole, not to any specific date. Data not seasonally adjusted.