



For Release: Thursday, September 14, 2017

17-1290-KAN

MOUNTAIN-PLAINS INFORMATION OFFICE: Kansas City, Mo.

Technical information: (816) 285-7000 BLSInfoKansasCity@bls.gov www.bls.gov/regions/mountain-plains

Media contact: (816) 285-7000

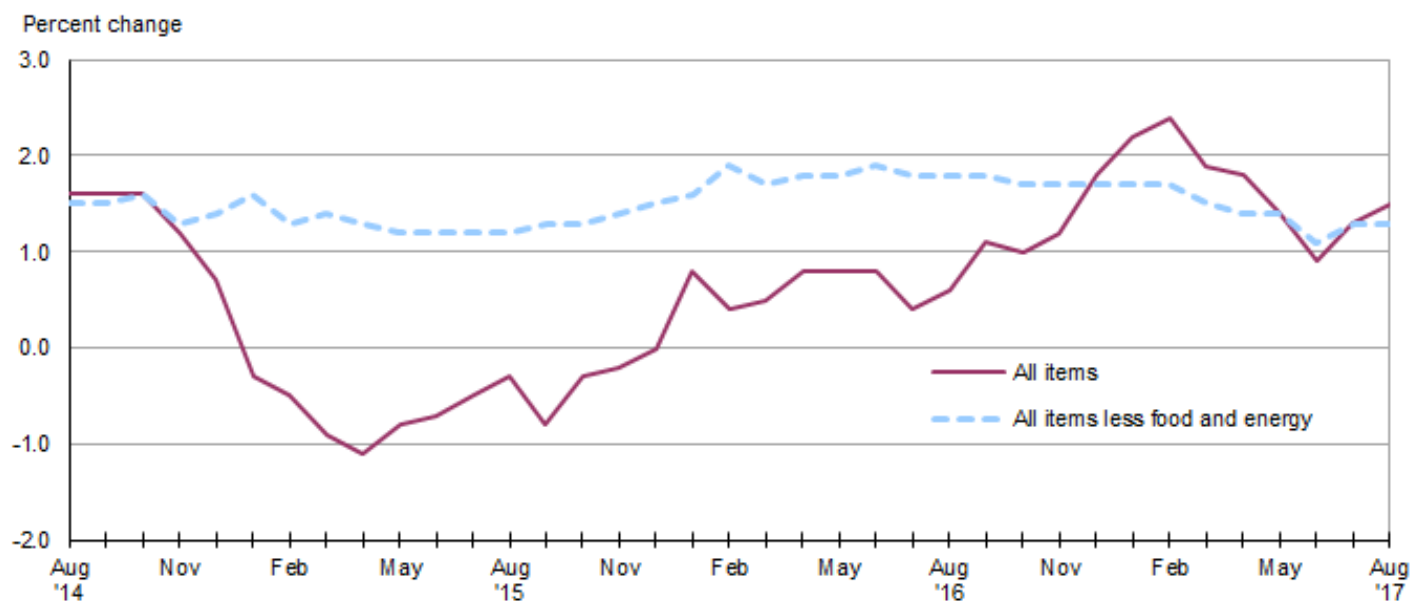
Consumer Price Index, Midwest Region – August 2017

Prices in the Midwest up 0.3 percent in August and 1.5 percent higher over the year

The Consumer Price Index for All Urban Consumers (CPI-U) in the Midwest was up 0.3 percent in August after recording no change for three consecutive months, the U.S. Bureau of Labor Statistics reported today. Higher costs for gasoline, food, and apparel had the largest upward impact on the index, while lower prices for new and used motor vehicles and airline fares had the largest offsetting downward movements. The all items less food and energy index was virtually unchanged, up a slight 0.1 percent, in August. Energy costs increased 1.9 percent and food prices rose 0.5 percent. (Data in this report are not seasonally adjusted. Accordingly, month-to-month changes may reflect the impact of seasonal influences.)

The CPI-U for the Midwest rose 1.5 percent from August 2016 to August 2017. (See [chart 1](#) and [table A](#).) The energy index, which includes motor fuel and household fuels, rose 5.2 percent and food prices increased 0.7 percent. Excluding food and energy, the CPI-U advanced 1.3 percent over the year. (See [table 1](#).)

Chart 1. Over-the-year percent change in CPI-U, Midwest region, August 2014–August 2017



Source: U.S. Bureau of Labor Statistics.

Food

Food prices in the Midwest rose 0.5 percent in August after recording no change in July. Higher costs for food away from home led the increase with a gain of 0.8 percent, the largest one-month advance since February 2014. Prices for food at home were up 0.3 percent over the month.

From August 2016 to August 2017, the index for food was 0.7 percent higher, mostly attributable to an increase of 1.5 percent in costs for food away from home. Prices for food at home were little changed, up 0.1 percent over the year.

Energy

The energy index advanced 1.9 percent in August following a decline of 0.5 percent in July. A 4.4-percent increase in gasoline prices was largely responsible for the rise. Electricity costs were little changed over the month, up a slight 0.1 percent. Moderating the overall increase, utility (piped) gas service costs declined 0.7 percent in August.

Energy costs were 5.2 percent higher from August 2016 to August 2017 due to increases among all three major subcategories: gasoline (7.3 percent), utility (piped) gas service (5.2 percent), and electricity (2.6 percent).

All items less food and energy

The index for all items less food and energy for the Midwest was nearly unchanged, up 0.1 percent, in August following little movement in June (-0.1 percent) and July (0.1 percent). Increases in the indexes for apparel (1.6 percent) and owners' equivalent rent of residences (0.2 percent) had the largest upward impact on the August index. Costs for new and used motor vehicles, airline fares, and lodging away from home were down over the month.

The index for all items less food and energy was up 1.3 percent from August 2016 to August 2017. Higher costs for shelter (2.5 percent), recreation (3.6 percent) and medical care (2.0 percent) led the increase. Among the indexes that registered offsetting movements were education and communication (-2.9 percent) and new and used motor vehicles (-2.4 percent).

The Midwest Consumer Price Index for All Urban Consumers (CPI-U) stood at 230.443 in August 2017. A typical market basket of goods and services that cost \$100.00 in the 1982-84 base period cost \$230.44 in August 2017.

CPI-W

In August, the Midwest Consumer Price Index for Urban Wage Earners and Clerical Workers (CPI-W) was 224.366. The CPI-W increased 0.3 percent in August and 1.3 percent over the year.

Table A. Midwest region CPI-U 1-month and 12-month percent changes, all items index, not seasonally adjusted

Month	2013		2014		2015		2016		2017	
	1-month	12-month	1-month	12-month	1-month	12-month	1-month	12-month	1-month	12-month
January.....	0.1	1.3	0.5	1.4	-0.6	-0.3	0.3	0.8	0.7	2.2
February.....	1.1	2.2	0.6	0.9	0.3	-0.5	0.0	0.4	0.2	2.4
March.....	0.2	1.4	0.9	1.5	0.6	-0.9	0.6	0.5	0.1	1.9
April.....	-0.1	1.2	0.3	1.9	0.1	-1.1	0.4	0.8	0.4	1.8
May.....	0.5	1.8	0.2	1.6	0.4	-0.8	0.4	0.8	0.0	1.4
June.....	0.3	2.2	0.5	1.7	0.5	-0.7	0.6	0.8	0.0	0.9
July.....	-0.4	1.8	-0.3	1.8	0.0	-0.5	-0.5	0.4	0.0	1.3

Table A. Midwest region CPI-U 1-month and 12-month percent changes, all items index, not seasonally adjusted - Continued

Month	2013		2014		2015		2016		2017	
	1-month	12-month	1-month	12-month	1-month	12-month	1-month	12-month	1-month	12-month
August	0.1	1.2	-0.2	1.6	0.0	-0.3	0.1	0.6	0.3	1.5
September	0.1	1.0	0.1	1.6	-0.3	-0.8	0.2	1.1		
October	-0.5	0.8	-0.5	1.6	-0.1	-0.3	-0.1	1.0		
November	-0.2	1.0	-0.6	1.2	-0.5	-0.2	-0.3	1.2		
December	-0.2	1.0	-0.7	0.7	-0.6	0.0	0.1	1.8		

The September 2017 Consumer Price Index for the Midwest region is scheduled to be released on Friday, October 13, 2017.

Technical Note

The Consumer Price Index (CPI) is a measure of the average change in prices over time in a fixed market basket of goods and services. The Bureau of Labor Statistics publishes CPIs for two population groups: (1) a CPI for All Urban Consumers (CPI-U) which covers approximately 89 percent of the total population and (2) a CPI for Urban Wage Earners and Clerical Workers (CPI-W) which covers approximately 28 percent of the total population. The CPI-U includes, in addition to wage earners and clerical workers, groups such as professional, managerial, and technical workers, the self-employed, short-term workers, the unemployed, and retirees and others not in the labor force.

The CPI is based on prices of food, clothing, shelter, and fuels, transportation fares, charges for doctors' and dentists' services, drugs, and the other goods and services that people buy for day-to-day living. Each month, prices are collected in 87 urban areas across the country from about 6,000 housing units and approximately 24,000 retail establishments—department stores, supermarkets, hospitals, filling stations, and other types of stores and service establishments. All taxes directly associated with the purchase and use of items are included in the index.

The index measures price changes from a designated reference date (1982-84) that equals 100.0. An increase of 16.5 percent, for example, is shown as 116.5. This change can also be expressed in dollars as follows: the price of a base period "market basket" of goods and services in the CPI has risen from \$10 in 1982-84 to \$11.65. For further details see the CPI home page on the Internet at www.bls.gov/cpi and the BLS Handbook of Methods, Chapter 17, The Consumer Price Index, available on the Internet at www.bls.gov/opub/hom/homch17_a.htm.

In calculating the index, price changes for the various items in each location are averaged together with weights that represent their importance in the spending of the appropriate population group. Local data are then combined to obtain a U.S. city average. Because the sample size of a local area is smaller, the local area index is subject to substantially more sampling and other measurement error than the national index. In addition, local indexes are not adjusted for seasonal influences. As a result, local area indexes show greater volatility than the national index, although their long-term trends are quite similar. **NOTE: Area indexes do not measure differences in the level of prices between areas; they only measure the average change in prices for each area since the base period.**

The Midwest region is comprised of Illinois, Indiana, Iowa, Kansas, Michigan, Minnesota, Missouri, Nebraska, North Dakota, Ohio, South Dakota, and Wisconsin.

Information in this release will be made available to sensory impaired individuals upon request. Voice phone: (202) 691-5200; Federal Relay Service: (800) 877-8339.

Table 1. Consumer Price Index for All Urban Consumers (CPI-U): Indexes and percent changes for selected periods Midwest (1982-84=100 unless otherwise noted)

Item and Group	Indexes			Percent change from-		
	Jun. 2017	Jul. 2017	Aug. 2017	Aug. 2016	Jun. 2017	Jul. 2017
Expenditure category						
All Items.....	229.780	229.820	230.443	1.5	0.3	0.3
All items (December 1977=100).....	373.866	373.930	374.943			
Food and beverages	240.701	240.794	241.870	0.7	0.5	0.4
Food	240.139	240.237	241.352	0.7	0.5	0.5
Food at home	226.024	225.959	226.561	0.1	0.2	0.3
Food away from home.....	263.857	264.233	266.222	1.5	0.9	0.8
Alcoholic beverages	246.259	246.288	246.791	1.1	0.2	0.2
Housing	223.325	222.809	222.978	2.3	-0.2	0.1
Shelter	263.258	262.779	263.051	2.5	-0.1	0.1
Rent of primary residence(1).....	261.592	262.237	262.826	2.8	0.5	0.2
Owners' equiv. rent of residences(1)(2).....	266.170	266.601	267.110	2.5	0.4	0.2
Owners' equiv. rent of primary residence(1)(2).....	266.136	266.561	267.071	2.5	0.4	0.2
Fuels and utilities.....	230.574	230.362	230.385	3.5	-0.1	0.0
Household energy	190.907	190.630	190.462	3.5	-0.2	-0.1
Energy services(1)	199.401	199.320	198.993	3.3	-0.2	-0.2
Electricity(1).....	219.647	220.116	220.293	2.6	0.3	0.1
Utility (piped) gas service(1).....	153.965	152.995	151.868	5.2	-1.4	-0.7
Household furnishings and operations.....	113.930	113.055	113.015	-1.1	-0.8	0.0
Apparel	115.627	115.604	117.480	1.3	1.6	1.6
Transportation	195.076	193.971	194.846	1.1	-0.1	0.5
Private transportation	189.157	188.556	189.987	1.4	0.4	0.8
New and used motor vehicles(3).....	96.986	96.767	96.146	-2.4	-0.9	-0.6
New vehicles	138.148	137.862	137.058	-1.0	-0.8	-0.6
New cars and trucks(3)(4).....	97.598	97.375	96.799	-1.0	-0.8	-0.6
New cars(4).....	134.571	134.005	133.125	-0.8	-1.1	-0.7
Used cars and trucks.....	140.044	139.402	139.009	-4.6	-0.7	-0.3
Motor fuel	206.410	204.436	213.316	7.3	3.3	4.3
Gasoline (all types).....	205.304	203.342	212.206	7.3	3.4	4.4
Gasoline, unleaded regular(4).....	199.448	197.415	206.236	7.3	3.4	4.5
Gasoline, Unleaded midgrade(4)(5).....	238.057	237.253	248.507	7.6	4.4	4.7
Gasoline, unleaded premium(4).....	229.497	228.369	235.659	6.7	2.7	3.2
Medical Care	478.231	482.591	483.167	2.0	1.0	0.1
Medical care commodities.....	389.037	401.125	401.076	4.2	3.1	0.0
Medical care services.....	508.096	509.682	510.477	1.4	0.5	0.2
Professional services	414.938	415.702	415.458	1.8	0.1	-0.1
Recreation(3).....	121.091	122.812	123.120	3.6	1.7	0.3
Education and communication(3).....	136.183	136.245	136.534	-2.9	0.3	0.2
Other goods and services	413.821	415.468	416.243	1.8	0.6	0.2
Commodity and Service Group						
All Items.....	229.780	229.820	230.443	1.5	0.3	0.3
Commodities	175.889	175.796	176.856	0.6	0.5	0.6
Commodities less food & beverages.....	144.551	144.388	145.408	0.5	0.6	0.7
Nondurables less food & beverages	187.076	187.425	190.235	2.6	1.7	1.5
Nondurables less food, beverages, and apparel	233.934	234.523	237.948	3.0	1.7	1.5
Durables	103.157	102.624	102.247	-2.3	-0.9	-0.4
Services.....	285.334	285.509	285.686	2.0	0.1	0.1
Rent of shelter(2).....	270.545	270.044	270.338	2.5	-0.1	0.1
Transportation services	307.070	305.039	302.705	1.7	-1.4	-0.8

Note: See footnotes at end of table.

Table 1. Consumer Price Index for All Urban Consumers (CPI-U): Indexes and percent changes for selected periods Midwest (1982-84=100 unless otherwise noted) - Continued

Item and Group	Indexes			Percent change from-		
	Jun. 2017	Jul. 2017	Aug. 2017	Aug. 2016	Jun. 2017	Jul. 2017
Other services	333.611	336.111	337.278	0.9	1.1	0.3
Special aggregate indexes:						
All items less medical care	218.019	217.854	218.478	1.4	0.2	0.3
All items less food	227.974	228.004	228.548	1.6	0.3	0.2
All items less shelter.....	219.993	220.218	220.971	1.0	0.4	0.3
Commodities less food	147.724	147.565	148.576	0.5	0.6	0.7
Nondurables	213.451	213.679	215.676	1.6	1.0	0.9
Nondurables less food.....	190.209	190.540	193.221	2.5	1.6	1.4
Nondurables less food and apparel.....	233.649	234.185	237.336	2.9	1.6	1.3
Services less rent of shelter(2).....	318.083	319.003	319.064	1.6	0.3	0.0
Services less medical care services.....	268.720	268.792	268.924	2.1	0.1	0.0
Energy	198.416	197.405	201.139	5.2	1.4	1.9
All items less energy	235.729	235.873	236.196	1.2	0.2	0.1
All items less food and energy	235.645	235.798	235.978	1.3	0.1	0.1
Commodities less food and energy commodities	143.785	143.863	143.966	-0.6	0.1	0.1
Energy commodities.....	205.849	203.703	212.363	7.3	3.2	4.3
Services less energy services	296.590	296.793	297.025	2.0	0.1	0.1

Footnotes(1) This index series was calculated using a Laspeyres estimator. All other item stratum index series were calculated using a geometric means estimator.

(2) Index is on a December 1982=100 base.

(3) Indexes on a December 1997=100 base.

(4) Special index based on a substantially smaller sample.

(5) Indexes on a December 1993=100 base.

Regions defined as the four Census regions. Midwest includes Illinois, Indiana, Iowa, Kansas, Michigan, Minnesota, Missouri, Nebraska, North Dakota, Ohio, South Dakota, and Wisconsin.

NOTE: Index applies to a month as a whole, not to any specific date. Data not seasonally adjusted.

Table 2. Consumer Price Index for Urban Wage Earners and Clerical Workers (CPI-W): Indexes and percent changes for selected periods Midwest (1982-84=100 unless otherwise noted)

Item and Group	Indexes			Percent change from-		
	Jun. 2017	Jul. 2017	Aug. 2017	Aug. 2016	Jun. 2017	Jul. 2017
Expenditure category						
All Items.....	223.625	223.626	224.366	1.3	0.3	0.3
All items (December 1977=100).....	361.651	361.653	362.849			
Food and beverages	240.324	240.513	241.636	0.7	0.5	0.5
Food	239.755	239.935	241.079	0.6	0.6	0.5
Food at home	226.382	226.444	227.172	0.1	0.3	0.3
Food away from home.....	265.018	265.439	267.430	1.5	0.9	0.8
Alcoholic beverages	247.837	248.192	248.947	1.4	0.4	0.3
Housing	218.158	217.881	218.139	2.3	0.0	0.1
Shelter	251.552	251.497	251.896	2.5	0.1	0.2
Rent of primary residence(1).....	262.225	262.895	263.497	2.8	0.5	0.2
Owners' equiv. rent of residences(1)(2).....	247.956	248.337	248.822	2.4	0.3	0.2
Owners' equiv. rent of primary residence(1)(2).....	247.946	248.326	248.813	2.4	0.3	0.2
Fuels and utilities.....	231.734	231.512	231.522	3.5	-0.1	0.0
Household energy	191.653	191.364	191.207	3.5	-0.2	-0.1
Energy services(1)	198.700	198.680	198.372	3.3	-0.2	-0.2
Electricity(1).....	217.404	217.862	218.128	2.7	0.3	0.1
Utility (piped) gas service(1).....	155.296	154.433	153.131	5.0	-1.4	-0.8
Household furnishings and operations.....	111.753	110.536	110.500	-1.4	-1.1	0.0
Apparel	114.369	114.080	115.460	1.9	1.0	1.2
Transportation	191.559	190.617	192.159	1.1	0.3	0.8
Private transportation	187.924	187.225	188.974	1.2	0.6	0.9
New and used motor vehicles(3).....	96.543	96.251	95.753	-2.9	-0.8	-0.5
New vehicles	141.350	140.861	140.273	-0.8	-0.8	-0.4
Used cars and trucks.....	140.551	139.916	139.530	-4.6	-0.7	-0.3
Motor fuel	206.544	204.709	213.650	7.3	3.4	4.4
Gasoline (all types).....	205.342	203.524	212.444	7.3	3.5	4.4
Gasoline, unleaded regular(4).....	199.310	197.433	206.300	7.3	3.5	4.5
Gasoline, unleaded midgrade(4)(5).....	237.732	237.051	248.312	7.6	4.5	4.8
Gasoline, unleaded premium(4).....	228.978	227.986	235.266	6.7	2.7	3.2
Medical Care	483.419	488.132	488.861	1.9	1.1	0.1
Medical care commodities.....	380.131	392.829	393.256	4.0	3.5	0.1
Medical care services.....	515.377	517.196	518.024	1.4	0.5	0.2
Professional services	417.051	417.962	417.607	1.8	0.1	-0.1
Recreation(3).....	117.155	117.935	118.213	2.9	0.9	0.2
Education and communication(3).....	126.698	126.707	126.865	-4.1	0.1	0.1
Other goods and services	463.219	464.842	464.652	1.9	0.3	0.0
Commodity and Service Group						
All Items.....	223.625	223.626	224.366	1.3	0.3	0.3
Commodities	178.263	178.061	179.236	0.6	0.5	0.7
Commodities less food & beverages.....	148.221	147.871	149.030	0.5	0.5	0.8
Nondurables less food & beverages	194.696	194.725	197.823	3.0	1.6	1.6
Nondurables less food, beverages, and apparel	244.066	244.269	248.392	3.3	1.8	1.7
Durables	104.881	104.280	103.964	-2.7	-0.9	-0.3
Services.....	277.036	277.252	277.548	1.9	0.2	0.1
Rent of shelter(2).....	249.936	249.880	250.294	2.5	0.1	0.2
Transportation services	307.506	306.487	305.142	2.0	-0.8	-0.4
Other services	306.304	307.372	308.224	-0.3	0.6	0.3
Special aggregate indexes:						

Note: See footnotes at end of table.

Table 2. Consumer Price Index for Urban Wage Earners and Clerical Workers (CPI-W): Indexes and percent changes for selected periods Midwest (1982-84=100 unless otherwise noted) - Continued

Item and Group	Indexes			Percent change from-		
	Jun. 2017	Jul. 2017	Aug. 2017	Aug. 2016	Jun. 2017	Jul. 2017
All items less medical care	213.667	213.487	214.228	1.3	0.3	0.3
All items less food	220.295	220.267	220.940	1.5	0.3	0.3
All items less shelter.....	216.102	216.124	216.993	0.9	0.4	0.4
Commodities less food	151.193	150.857	152.013	0.6	0.5	0.8
Nondurables	217.739	217.846	220.019	1.8	1.0	1.0
Nondurables less food.....	197.403	197.449	200.431	2.9	1.5	1.5
Nondurables less food and apparel.....	242.795	243.009	246.851	3.2	1.7	1.6
Services less rent of shelter(2).....	280.898	281.387	281.529	1.2	0.2	0.1
Services less medical care services.....	261.274	261.392	261.654	1.9	0.1	0.1
Energy	197.763	196.758	200.819	5.3	1.5	2.1
All items less energy	228.702	228.823	229.174	0.9	0.2	0.2
All items less food and energy	226.630	226.739	226.943	1.0	0.1	0.1
Commodities less food and energy commodities	146.709	146.638	146.622	-0.9	-0.1	0.0
Energy commodities.....	206.141	204.091	212.770	7.2	3.2	4.3
Services less energy services	287.540	287.786	288.156	1.7	0.2	0.1

Footnotes(1) This index series was calculated using a Laspeyres estimator. All other item stratum index series were calculated using a geometric means estimator.

(2) Index is on a December 1984=100 base.

(3) Indexes on a December 1997=100 base.

(4) Special index based on a substantially smaller sample.

(5) Indexes on a December 1993=100 base.

Regions defined as the four Census regions. Midwest includes Illinois, Indiana, Iowa, Kansas, Michigan, Minnesota, Missouri, Nebraska, North Dakota, Ohio, South Dakota, and Wisconsin.

NOTE: Index applies to a month as a whole, not to any specific date. Data not seasonally adjusted.