



For Release: Friday, October 13, 2017

17-1399-KAN

MOUNTAIN-PLAINS INFORMATION OFFICE: Kansas City, Mo.

Technical information: (816) 285-7000 BLSInfoKansasCity@bls.gov www.bls.gov/regions/mountain-plains

Media contact: (816) 285-7000

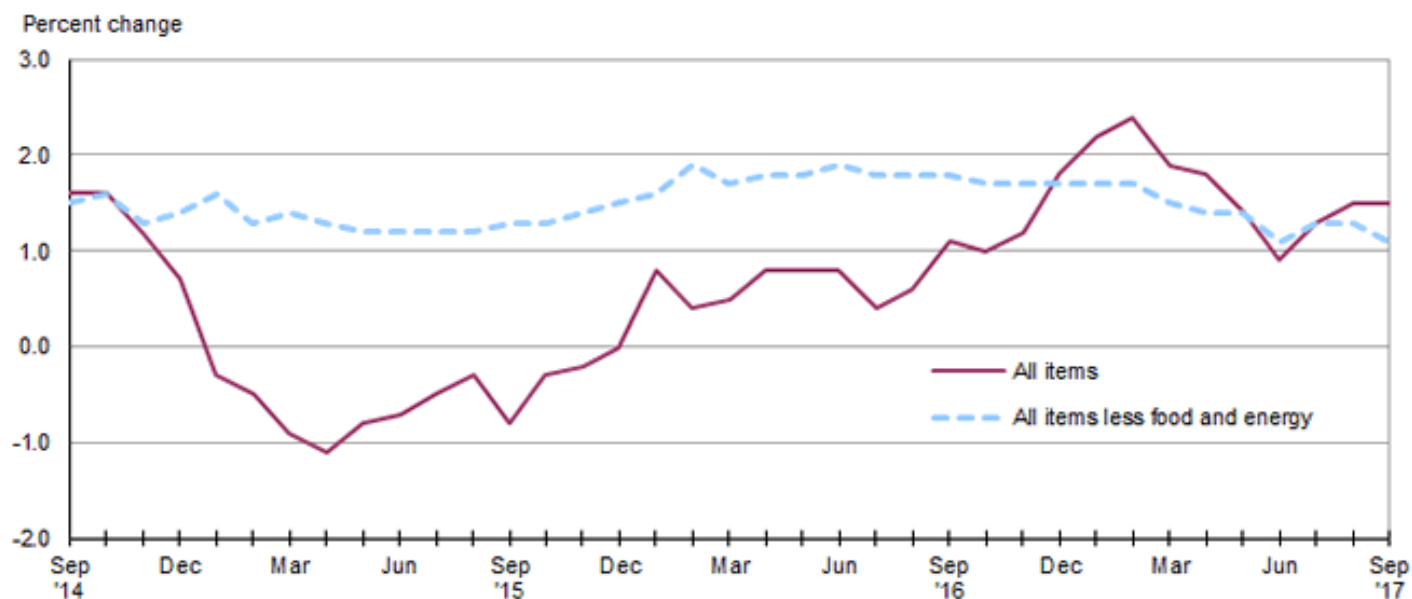
## Consumer Price Index, Midwest Region – September 2017

**Prices in the Midwest up 0.3 percent in September and 1.5 percent higher over the year**

The Consumer Price Index for All Urban Consumers (CPI-U) in the Midwest was up 0.3 percent in September, following an increase of the same magnitude in the prior month, the U.S. Bureau of Labor Statistics reported today. Higher costs for gasoline, shelter, and apparel had the largest upward impact on the index, while lower prices for medical care commodities and new and used motor vehicles had the largest offsetting downward movements. The all items less food and energy index was virtually unchanged in September. Energy costs increased 2.1 percent and food prices rose 0.2 percent. (Data in this report are not seasonally adjusted. Accordingly, month-to-month changes may reflect the impact of seasonal influences.)

The CPI-U for the Midwest rose 1.5 percent from September 2016 to September 2017. (See [chart 1](#) and [table A](#).) The energy index, which includes motor fuel and household fuels, rose 7.2 percent and food prices increased 0.8 percent. Excluding food and energy, the CPI-U advanced 1.1 percent over the year. (See [table 1](#).)

**Chart 1. Over-the-year percent change in CPI-U, Midwest region, September 2014–September 2017**



Source: U.S. Bureau of Labor Statistics.

## Food

Food prices in the Midwest rose more slowly in September, 0.2 percent, compared to their 0.5-percent rise in August. Costs for food away from home were up 0.3 percent and prices for food at home were little changed (0.1 percent) over the month.

From September 2016 to September 2017, the index for food was 0.8 percent higher, primarily attributable to an increase of 1.6 percent in costs for food away from home. Prices for food at home were up 0.4 percent over the year.

## Energy

The energy index advanced 2.1 percent in September following an increase of 1.9 percent in August. A 5.6-percent increase in gasoline prices was largely responsible for the rise. Electricity costs decreased 1.2 percent and utility (piped) gas service costs declined 0.7 percent moderating the overall rise in the energy index.

Energy costs rose 7.2 percent from September 2016 to September 2017 led by a 12.5-percent increase in gasoline prices. Higher costs for utility (piped) gas service (3.2 percent) and electricity (2.1 percent) also contributed to the increase.

## All items less food and energy

The index for all items less food and energy for the Midwest was virtually unchanged, up a slight 0.1 percent, for the third consecutive month. Increases in the indexes for apparel (2.5 percent) and owners' equivalent rent of residences (0.3 percent) had the largest upward impact on the September index. Costs for medical care commodities (-3.1 percent), new and used motor vehicles (-0.9 percent), and recreation (-0.5 percent) were among those that were down over the month.

The index for all items less food and energy was up 1.1 percent from September 2016 to September 2017. Higher costs for shelter (2.4 percent) led the increase. Among the indexes that registered offsetting movements were education and communication (-2.5 percent) and new and used motor vehicles (-2.5 percent).

The Midwest Consumer Price Index for All Urban Consumers (CPI-U) stood at 231.030 in September 2017. A typical market basket of goods and services that cost \$100.00 in the 1982-84 base period cost \$231.03 in September 2017.

## CPI-W

In September, the Midwest Consumer Price Index for Urban Wage Earners and Clerical Workers (CPI-W) was 225.026. The CPI-W increased 0.3 percent in September and 1.5 percent over the year.

**Table A. Midwest region CPI-U 1-month and 12-month percent changes, all items index, not seasonally adjusted**

Month	2013		2014		2015		2016		2017	
	1-month	12-month	1-month	12-month	1-month	12-month	1-month	12-month	1-month	12-month
January.....	0.1	1.3	0.5	1.4	-0.6	-0.3	0.3	0.8	0.7	2.2
February.....	1.1	2.2	0.6	0.9	0.3	-0.5	0.0	0.4	0.2	2.4
March.....	0.2	1.4	0.9	1.5	0.6	-0.9	0.6	0.5	0.1	1.9
April.....	-0.1	1.2	0.3	1.9	0.1	-1.1	0.4	0.8	0.4	1.8
May.....	0.5	1.8	0.2	1.6	0.4	-0.8	0.4	0.8	0.0	1.4
June.....	0.3	2.2	0.5	1.7	0.5	-0.7	0.6	0.8	0.0	0.9
July.....	-0.4	1.8	-0.3	1.8	0.0	-0.5	-0.5	0.4	0.0	1.3
August.....	0.1	1.2	-0.2	1.6	0.0	-0.3	0.1	0.6	0.3	1.5

**Table A. Midwest region CPI-U 1-month and 12-month percent changes, all items index, not seasonally adjusted - Continued**

Month	2013		2014		2015		2016		2017	
	1-month	12-month	1-month	12-month	1-month	12-month	1-month	12-month	1-month	12-month
September .....	0.1	1.0	0.1	1.6	-0.3	-0.8	0.2	1.1	0.3	1.5
October .....	-0.5	0.8	-0.5	1.6	-0.1	-0.3	-0.1	1.0		
November .....	-0.2	1.0	-0.6	1.2	-0.5	-0.2	-0.3	1.2		
December .....	-0.2	1.0	-0.7	0.7	-0.6	0.0	0.1	1.8		

**The October 2017 Consumer Price Index for the Midwest region is scheduled to be released on Wednesday, November 15, 2017.**

### Technical Note

The Consumer Price Index (CPI) is a measure of the average change in prices over time in a fixed market basket of goods and services. The Bureau of Labor Statistics publishes CPIs for two population groups: (1) a CPI for All Urban Consumers (CPI-U) which covers approximately 89 percent of the total population and (2) a CPI for Urban Wage Earners and Clerical Workers (CPI-W) which covers approximately 28 percent of the total population. The CPI-U includes, in addition to wage earners and clerical workers, groups such as professional, managerial, and technical workers, the self-employed, short-term workers, the unemployed, and retirees and others not in the labor force.

The CPI is based on prices of food, clothing, shelter, and fuels, transportation fares, charges for doctors' and dentists' services, drugs, and the other goods and services that people buy for day-to-day living. Each month, prices are collected in 87 urban areas across the country from about 6,000 housing units and approximately 24,000 retail establishments—department stores, supermarkets, hospitals, filling stations, and other types of stores and service establishments. All taxes directly associated with the purchase and use of items are included in the index.

The index measures price changes from a designated reference date (1982-84) that equals 100.0. An increase of 16.5 percent, for example, is shown as 116.5. This change can also be expressed in dollars as follows: the price of a base period "market basket" of goods and services in the CPI has risen from \$10 in 1982-84 to \$11.65. For further details see the CPI home page on the Internet at [www.bls.gov/cpi](http://www.bls.gov/cpi) and the BLS Handbook of Methods, Chapter 17, The Consumer Price Index, available on the Internet at [www.bls.gov/opub/hom/homch17\\_a.htm](http://www.bls.gov/opub/hom/homch17_a.htm).

In calculating the index, price changes for the various items in each location are averaged together with weights that represent their importance in the spending of the appropriate population group. Local data are then combined to obtain a U.S. city average. Because the sample size of a local area is smaller, the local area index is subject to substantially more sampling and other measurement error than the national index. In addition, local indexes are not adjusted for seasonal influences. As a result, local area indexes show greater volatility than the national index, although their long-term trends are quite similar. **NOTE: Area indexes do not measure differences in the level of prices between areas; they only measure the average change in prices for each area since the base period.**

The Midwest region is comprised of Illinois, Indiana, Iowa, Kansas, Michigan, Minnesota, Missouri, Nebraska, North Dakota, Ohio, South Dakota, and Wisconsin.

Information in this release will be made available to sensory impaired individuals upon request. Voice phone: (202) 691-5200; Federal Relay Service: (800) 877-8339.

**Table 1. Consumer Price Index for All Urban Consumers (CPI-U): Indexes and percent changes for selected periods Midwest (1982-84=100 unless otherwise noted)**

Item and Group	Indexes			Percent change from-		
	Jul. 2017	Aug. 2017	Sep. 2017	Sep. 2016	Jul. 2017	Aug. 2017
<b>Expenditure category</b>						
All Items.....	229.820	230.443	231.030	1.5	0.5	0.3
All items (December 1977=100).....	373.930	374.943	375.898			
Food and beverages .....	240.794	241.870	242.352	0.9	0.6	0.2
Food .....	240.237	241.352	241.808	0.8	0.7	0.2
Food at home .....	225.959	226.561	226.883	0.4	0.4	0.1
Food away from home.....	264.233	266.222	266.908	1.6	1.0	0.3
Alcoholic beverages .....	246.288	246.791	247.648	1.4	0.6	0.3
Housing .....	222.809	222.978	223.455	2.1	0.3	0.2
Shelter .....	262.779	263.051	264.066	2.4	0.5	0.4
Rent of primary residence(1).....	262.237	262.826	263.669	2.9	0.5	0.3
Owners' equiv. rent of residences(1)(2).....	266.601	267.110	268.022	2.6	0.5	0.3
Owners' equiv. rent of primary residence(1)(2).....	266.561	267.071	267.979	2.6	0.5	0.3
Fuels and utilities.....	230.362	230.385	228.954	3.0	-0.6	-0.6
Household energy .....	190.630	190.462	188.891	2.8	-0.9	-0.8
Energy services(1) .....	199.320	198.993	196.870	2.4	-1.2	-1.1
Electricity(1).....	220.116	220.293	217.584	2.1	-1.2	-1.2
Utility (piped) gas service(1).....	152.995	151.868	150.832	3.2	-1.4	-0.7
Household furnishings and operations.....	113.055	113.015	113.046	-0.7	0.0	0.0
Apparel .....	115.604	117.480	120.438	1.3	4.2	2.5
Transportation .....	193.971	194.846	196.614	2.2	1.4	0.9
Private transportation .....	188.556	189.987	191.783	2.6	1.7	0.9
New and used motor vehicles(3).....	96.767	96.146	95.273	-2.5	-1.5	-0.9
New vehicles .....	137.862	137.058	136.283	-1.5	-1.1	-0.6
New cars and trucks(3)(4).....	97.375	96.799	96.266	-1.6	-1.1	-0.6
New cars(4).....	134.005	133.125	132.554	-1.3	-1.1	-0.4
Used cars and trucks.....	139.402	139.009	136.715	-4.5	-1.9	-1.7
Motor fuel .....	204.436	213.316	225.246	12.6	10.2	5.6
Gasoline (all types).....	203.342	212.206	224.023	12.5	10.2	5.6
Gasoline, unleaded regular(4).....	197.415	206.236	218.049	12.7	10.5	5.7
Gasoline, Unleaded midgrade(4)(5).....	237.253	248.507	258.803	12.1	9.1	4.1
Gasoline, unleaded premium(4).....	228.369	235.659	246.917	11.0	8.1	4.8
Medical Care .....	482.591	483.167	478.861	0.9	-0.8	-0.9
Medical care commodities.....	401.125	401.076	388.445	0.7	-3.2	-3.1
Medical care services.....	509.682	510.477	509.160	0.9	-0.1	-0.3
Professional services .....	415.702	415.458	415.589	1.9	0.0	0.0
Recreation(3).....	122.812	123.120	122.565	3.0	-0.2	-0.5
Education and communication(3).....	136.245	136.534	137.110	-2.5	0.6	0.4
Other goods and services .....	415.468	416.243	416.205	1.4	0.2	0.0
<b>Commodity and Service Group</b>						
All Items.....	229.820	230.443	231.030	1.5	0.5	0.3
Commodities .....	175.796	176.856	177.734	0.9	1.1	0.5
Commodities less food & beverages.....	144.388	145.408	146.417	0.9	1.4	0.7
Nondurables less food & beverages .....	187.425	190.235	193.642	3.6	3.3	1.8
Nondurables less food, beverages, and apparel .....	234.523	237.948	241.662	4.4	3.0	1.6
Durables .....	102.624	102.247	101.408	-2.7	-1.2	-0.8
Services.....	285.509	285.686	285.978	1.9	0.2	0.1
Rent of shelter(2).....	270.044	270.338	271.397	2.4	0.5	0.4
Transportation services .....	305.039	302.705	303.025	1.7	-0.7	0.1

Note: See footnotes at end of table.

**Table 1. Consumer Price Index for All Urban Consumers (CPI-U): Indexes and percent changes for selected periods Midwest (1982-84=100 unless otherwise noted) - Continued**

Item and Group	Indexes			Percent change from-		
	Jul. 2017	Aug. 2017	Sep. 2017	Sep. 2016	Jul. 2017	Aug. 2017
Other services .....	336.111	337.278	337.322	0.8	0.4	0.0
<b>Special aggregate indexes:</b>						
All items less medical care .....	217.854	218.478	219.299	1.6	0.7	0.4
All items less food .....	228.004	228.548	229.155	1.6	0.5	0.3
All items less shelter.....	220.218	220.971	221.411	1.1	0.5	0.2
Commodities less food .....	147.565	148.576	149.586	0.9	1.4	0.7
Nondurables .....	213.679	215.676	217.704	2.1	1.9	0.9
Nondurables less food.....	190.540	193.221	196.484	3.5	3.1	1.7
Nondurables less food and apparel.....	234.185	237.336	240.778	4.1	2.8	1.5
Services less rent of shelter(2).....	319.003	319.064	318.538	1.4	-0.1	-0.2
Services less medical care services.....	268.792	268.924	269.332	2.0	0.2	0.2
Energy .....	197.405	201.139	205.385	7.2	4.0	2.1
All items less energy .....	235.873	236.196	236.430	1.0	0.2	0.1
All items less food and energy .....	235.798	235.978	236.172	1.1	0.2	0.1
Commodities less food and energy commodities .....	143.863	143.966	143.673	-1.0	-0.1	-0.2
Energy commodities.....	203.703	212.363	224.265	12.6	10.1	5.6
Services less energy services .....	296.793	297.025	297.574	1.8	0.3	0.2

**Footnotes**

(1) This index series was calculated using a Laspeyres estimator. All other item stratum index series were calculated using a geometric means estimator.

(2) Index is on a December 1982=100 base.

(3) Indexes on a December 1997=100 base.

(4) Special index based on a substantially smaller sample.

(5) Indexes on a December 1993=100 base.

Regions defined as the four Census regions. Midwest includes Illinois, Indiana, Iowa, Kansas, Michigan, Minnesota, Missouri, Nebraska, North Dakota, Ohio, South Dakota, and Wisconsin.

NOTE: Index applies to a month as a whole, not to any specific date. Data not seasonally adjusted.

**Table 2. Consumer Price Index for Urban Wage Earners and Clerical Workers (CPI-W): Indexes and percent changes for selected periods Midwest (1982-84=100 unless otherwise noted)**

Item and Group	Indexes			Percent change from-		
	Jul. 2017	Aug. 2017	Sep. 2017	Sep. 2016	Jul. 2017	Aug. 2017
<b>Expenditure category</b>						
All Items.....	223.626	224.366	225.026	1.5	0.6	0.3
All items (December 1977=100).....	361.653	362.849	363.916			
Food and beverages .....	240.513	241.636	242.017	0.8	0.6	0.2
Food .....	239.935	241.079	241.457	0.8	0.6	0.2
Food at home .....	226.444	227.172	227.380	0.3	0.4	0.1
Food away from home.....	265.439	267.430	268.157	1.6	1.0	0.3
Alcoholic beverages .....	248.192	248.947	249.388	1.5	0.5	0.2
Housing .....	217.881	218.139	218.549	2.2	0.3	0.2
Shelter .....	251.497	251.896	252.777	2.5	0.5	0.3
Rent of primary residence(1).....	262.895	263.497	264.349	2.9	0.6	0.3
Owners' equiv. rent of residences(1)(2).....	248.337	248.822	249.654	2.5	0.5	0.3
Owners' equiv. rent of primary residence(1)(2).....	248.326	248.813	249.644	2.5	0.5	0.3
Fuels and utilities.....	231.512	231.522	230.171	3.0	-0.6	-0.6
Household energy .....	191.364	191.207	189.733	2.8	-0.9	-0.8
Energy services(1) .....	198.680	198.372	196.287	2.4	-1.2	-1.1
Electricity(1).....	217.862	218.128	215.566	2.3	-1.1	-1.2
Utility (piped) gas service(1).....	154.433	153.131	151.996	2.8	-1.6	-0.7
Household furnishings and operations.....	110.536	110.500	110.651	-1.2	0.1	0.1
Apparel .....	114.080	115.460	118.967	2.2	4.3	3.0
Transportation .....	190.617	192.159	194.125	2.4	1.8	1.0
Private transportation .....	187.225	188.974	190.954	2.5	2.0	1.0
New and used motor vehicles(3).....	96.251	95.753	94.738	-3.0	-1.6	-1.1
New vehicles .....	140.861	140.273	139.652	-1.3	-0.9	-0.4
Used cars and trucks.....	139.916	139.530	137.237	-4.5	-1.9	-1.6
Motor fuel .....	204.709	213.650	225.531	12.4	10.2	5.6
Gasoline (all types).....	203.524	212.444	224.201	12.4	10.2	5.5
Gasoline, unleaded regular(4).....	197.433	206.300	218.035	12.6	10.4	5.7
Gasoline, unleaded midgrade(4)(5).....	237.051	248.312	258.464	12.0	9.0	4.1
Gasoline, unleaded premium(4).....	227.986	235.266	246.499	10.9	8.1	4.8
Medical Care .....	488.132	488.861	483.706	0.7	-0.9	-1.1
Medical care commodities.....	392.829	393.256	378.668	0.1	-3.6	-3.7
Medical care services.....	517.196	518.024	516.286	0.8	-0.2	-0.3
Professional services .....	417.962	417.607	417.739	1.9	-0.1	0.0
Recreation(3).....	117.935	118.213	118.023	2.9	0.1	-0.2
Education and communication(3).....	126.707	126.865	127.265	-3.7	0.4	0.3
Other goods and services .....	464.842	464.652	464.575	1.5	-0.1	0.0
<b>Commodity and Service Group</b>						
All Items.....	223.626	224.366	225.026	1.5	0.6	0.3
Commodities .....	178.061	179.236	180.292	1.1	1.3	0.6
Commodities less food & beverages.....	147.871	149.030	150.318	1.2	1.7	0.9
Nondurables less food & beverages .....	194.725	197.823	202.026	4.4	3.7	2.1
Nondurables less food, beverages, and apparel .....	244.269	248.392	253.096	5.0	3.6	1.9
Durables .....	104.280	103.964	103.064	-3.0	-1.2	-0.9
Services.....	277.252	277.548	277.805	1.7	0.2	0.1
Rent of shelter(2).....	249.880	250.294	251.181	2.5	0.5	0.4
Transportation services .....	306.487	305.142	305.315	2.0	-0.4	0.1
Other services .....	307.372	308.224	308.634	0.0	0.4	0.1
<b>Special aggregate indexes:</b>						

Note: See footnotes at end of table.

**Table 2. Consumer Price Index for Urban Wage Earners and Clerical Workers (CPI-W): Indexes and percent changes for selected periods Midwest (1982-84=100 unless otherwise noted) - Continued**

Item and Group	Indexes			Percent change from-		
	Jul. 2017	Aug. 2017	Sep. 2017	Sep. 2016	Jul. 2017	Aug. 2017
All items less medical care .....	213.487	214.228	215.111	1.5	0.8	0.4
All items less food .....	220.267	220.940	221.643	1.6	0.6	0.3
All items less shelter.....	216.124	216.993	217.581	1.1	0.7	0.3
Commodities less food .....	150.857	152.013	153.288	1.2	1.6	0.8
Nondurables .....	217.846	220.019	222.422	2.5	2.1	1.1
Nondurables less food.....	197.449	200.431	204.448	4.2	3.5	2.0
Nondurables less food and apparel.....	243.009	246.851	251.203	4.7	3.4	1.8
Services less rent of shelter(2).....	281.387	281.529	281.089	1.1	-0.1	-0.2
Services less medical care services.....	261.392	261.654	262.030	1.9	0.2	0.1
Energy .....	196.758	200.819	205.543	7.5	4.5	2.4
All items less energy .....	228.823	229.174	229.357	0.9	0.2	0.1
All items less food and energy .....	226.739	226.943	227.090	0.9	0.2	0.1
Commodities less food and energy commodities .....	146.638	146.622	146.242	-1.2	-0.3	-0.3
Energy commodities.....	204.091	212.770	224.616	12.4	10.1	5.6
Services less energy services .....	287.786	288.156	288.698	1.7	0.3	0.2

**Footnotes**

(1) This index series was calculated using a Laspeyres estimator. All other item stratum index series were calculated using a geometric means estimator.

(2) Index is on a December 1984=100 base.

(3) Indexes on a December 1997=100 base.

(4) Special index based on a substantially smaller sample.

(5) Indexes on a December 1993=100 base.

Regions defined as the four Census regions. Midwest includes Illinois, Indiana, Iowa, Kansas, Michigan, Minnesota, Missouri, Nebraska, North Dakota, Ohio, South Dakota, and Wisconsin.

NOTE: Index applies to a month as a whole, not to any specific date. Data not seasonally adjusted.