



**For Release: Wednesday, November 15, 2017**

**17-1515-KAN**

MOUNTAIN-PLAINS INFORMATION OFFICE: Kansas City, Mo.

Technical information: (816) 285-7000 BLSInfoKansasCity@bls.gov [www.bls.gov/regions/mountain-plains](http://www.bls.gov/regions/mountain-plains)

Media contact: (816) 285-7000

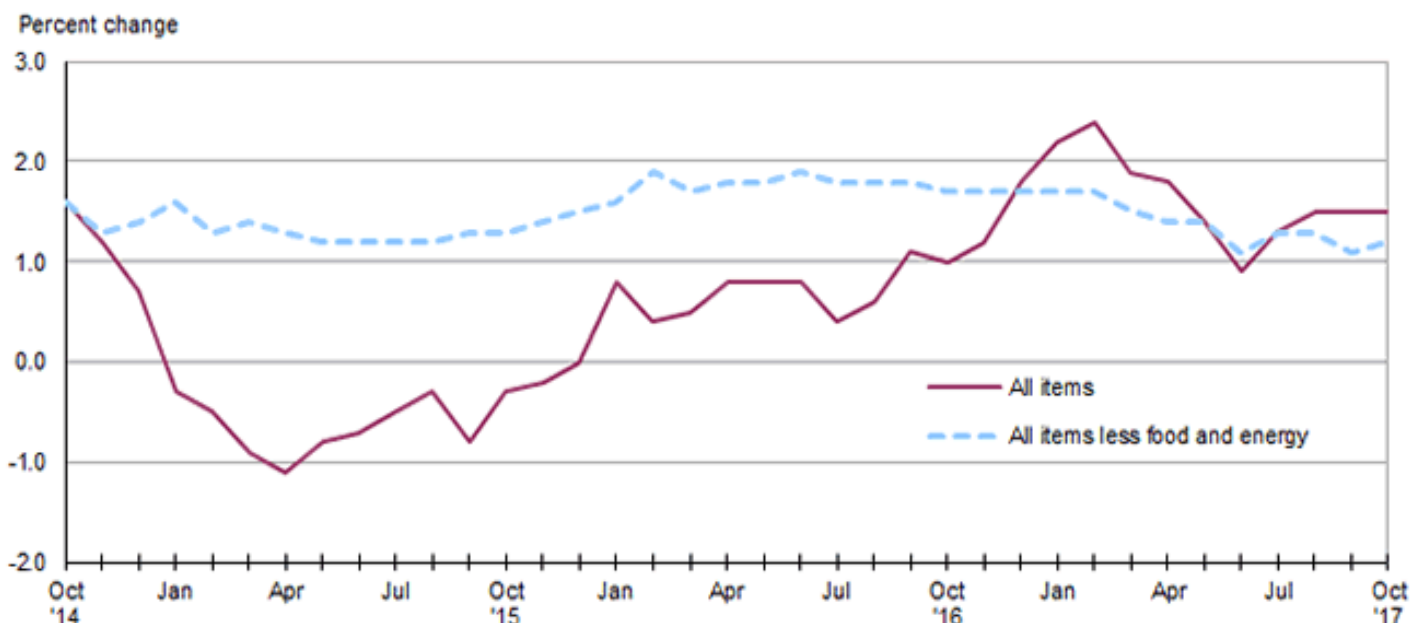
## Consumer Price Index, Midwest Region – October 2017

**Prices in the Midwest down 0.2 percent in October and 1.5 percent higher over the year**

The Consumer Price Index for All Urban Consumers (CPI-U) in the Midwest decreased 0.2 percent in October, following an increase of 0.3 percent in the prior month, the U.S. Bureau of Labor Statistics reported today. Lower costs for electricity (-8.5 percent) and gasoline (-2.9 percent) led the decline. Overall, energy prices were down 4.3 percent over the month. Food prices advanced 0.3 percent in October and the index for all items less food and energy rose 0.2 percent. (Data in this report are not seasonally adjusted. Accordingly, month-to-month changes may reflect the impact of seasonal influences.)

The CPI-U for the Midwest rose 1.5 percent from October 2016 to October 2017. (See [chart 1](#) and [table A.](#)) The energy index, which includes motor fuel and household fuels, rose 5.0 percent and food prices increased 1.0 percent. Excluding food and energy, the CPI-U advanced 1.2 percent over the year. (See [table 1.](#))

**Chart 1. Over-the-year percent change in CPI-U, Midwest region, October 2014–October 2017**



Source: U.S. Bureau of Labor Statistics.

## Food

Food prices in the Midwest rose 0.3 percent in October, following gains of 0.2 and 0.5 percent in September and August, respectively. Costs for food away from home were up 0.4 percent and prices for food at home rose 0.3 percent over the month.

From October 2016 to October 2017, the index for food was 1.0 percent higher led by an increase of 1.7 percent in costs for food away from home. Prices for food at home were up 0.5 percent over the year.

## Energy

The energy index declined 4.3 percent in October attributable to lower prices for electricity and gasoline. Prices for electricity were down 8.5 percent influenced by seasonal rate schedules. Gasoline costs were 2.9 percent lower in October after rising 5.6 percent in the prior month. Costs for utility (piped) gas service (0.1 percent) were virtually unchanged over the month.

Energy costs rose 5.0 percent from October 2016 to October 2017 led by a 9.1-percent increase in gasoline prices. Higher costs for utility (piped) gas service (2.4 percent) also contributed to the increase, while electricity prices (0.3 percent) changed little over the year.

## All items less food and energy

The index for all items less food and energy for the Midwest was up 0.2 percent in October after recording little change (0.1 percent) in each of the prior three months. Increases in the indexes for apparel (1.5 percent) and shelter (0.1 percent) had the largest upward impact on the October index. Costs for new and used motor vehicles (-0.7 percent) and medical care commodities (-0.5 percent) were among those that were down over the month.

The index for all items less food and energy was up 1.2 percent from October 2016 to October 2017. Higher costs for shelter (2.5 percent) led the increase. Among the indexes that registered offsetting movements were new and used motor vehicles (-2.6 percent) and education and communication (-2.3 percent).

The Midwest Consumer Price Index for All Urban Consumers (CPI-U) stood at 230.660 in October 2017. A typical market basket of goods and services that cost \$100.00 in the 1982-84 base period cost \$230.66 in October 2017..

## CPI-W

In October, the Midwest Consumer Price Index for Urban Wage Earners and Clerical Workers (CPI-W) was 224.515. The CPI-W decreased 0.2 percent in October and rose 1.4 percent over the year.

**Table A. Midwest region CPI-U 1-month and 12-month percent changes, all items index, not seasonally adjusted**

Month	2013		2014		2015		2016		2017	
	1-month	12-month	1-month	12-month	1-month	12-month	1-month	12-month	1-month	12-month
January.....	0.1	1.3	0.5	1.4	-0.6	-0.3	0.3	0.8	0.7	2.2
February.....	1.1	2.2	0.6	0.9	0.3	-0.5	0.0	0.4	0.2	2.4
March.....	0.2	1.4	0.9	1.5	0.6	-0.9	0.6	0.5	0.1	1.9
April.....	-0.1	1.2	0.3	1.9	0.1	-1.1	0.4	0.8	0.4	1.8
May.....	0.5	1.8	0.2	1.6	0.4	-0.8	0.4	0.8	0.0	1.4
June.....	0.3	2.2	0.5	1.7	0.5	-0.7	0.6	0.8	0.0	0.9
July.....	-0.4	1.8	-0.3	1.8	0.0	-0.5	-0.5	0.4	0.0	1.3
August.....	0.1	1.2	-0.2	1.6	0.0	-0.3	0.1	0.6	0.3	1.5

**Table A. Midwest region CPI-U 1-month and 12-month percent changes, all items index, not seasonally adjusted - Continued**

Month	2013		2014		2015		2016		2017	
	1-month	12-month	1-month	12-month	1-month	12-month	1-month	12-month	1-month	12-month
September .....	0.1	1.0	0.1	1.6	-0.3	-0.8	0.2	1.1	0.3	1.5
October .....	-0.5	0.8	-0.5	1.6	-0.1	-0.3	-0.1	1.0	-0.2	1.5
November .....	-0.2	1.0	-0.6	1.2	-0.5	-0.2	-0.3	1.2		
December .....	-0.2	1.0	-0.7	0.7	-0.6	0.0	0.1	1.8		

**The November 2017 Consumer Price Index for the Midwest region is scheduled to be released on Wednesday, December 13, 2017.**

### Technical Note

The Consumer Price Index (CPI) is a measure of the average change in prices over time in a fixed market basket of goods and services. The Bureau of Labor Statistics publishes CPIs for two population groups: (1) a CPI for All Urban Consumers (CPI-U) which covers approximately 89 percent of the total population and (2) a CPI for Urban Wage Earners and Clerical Workers (CPI-W) which covers approximately 28 percent of the total population. The CPI-U includes, in addition to wage earners and clerical workers, groups such as professional, managerial, and technical workers, the self-employed, short-term workers, the unemployed, and retirees and others not in the labor force.

The CPI is based on prices of food, clothing, shelter, and fuels, transportation fares, charges for doctors' and dentists' services, drugs, and the other goods and services that people buy for day-to-day living. Each month, prices are collected in 87 urban areas across the country from about 6,000 housing units and approximately 24,000 retail establishments—department stores, supermarkets, hospitals, filling stations, and other types of stores and service establishments. All taxes directly associated with the purchase and use of items are included in the index.

The index measures price changes from a designated reference date (1982-84) that equals 100.0. An increase of 16.5 percent, for example, is shown as 116.5. This change can also be expressed in dollars as follows: the price of a base period "market basket" of goods and services in the CPI has risen from \$10 in 1982-84 to \$11.65. For further details see the CPI home page on the Internet at [www.bls.gov/cpi](http://www.bls.gov/cpi) and the BLS Handbook of Methods, Chapter 17, The Consumer Price Index, available on the Internet at [www.bls.gov/opub/hom/homch17\\_a.htm](http://www.bls.gov/opub/hom/homch17_a.htm).

In calculating the index, price changes for the various items in each location are averaged together with weights that represent their importance in the spending of the appropriate population group. Local data are then combined to obtain a U.S. city average. Because the sample size of a local area is smaller, the local area index is subject to substantially more sampling and other measurement error than the national index. In addition, local indexes are not adjusted for seasonal influences. As a result, local area indexes show greater volatility than the national index, although their long-term trends are quite similar. **NOTE: Area indexes do not measure differences in the level of prices between areas; they only measure the average change in prices for each area since the base period.**

The Midwest region is comprised of Illinois, Indiana, Iowa, Kansas, Michigan, Minnesota, Missouri, Nebraska, North Dakota, Ohio, South Dakota, and Wisconsin.

Information in this release will be made available to sensory impaired individuals upon request. Voice phone: (202) 691-5200; Federal Relay Service: (800) 877-8339.

**Table 1. Consumer Price Index for All Urban Consumers (CPI-U): Indexes and percent changes for selected periods Midwest (1982-84=100 unless otherwise noted)**

Item and Group	Indexes			Percent change from-		
	Aug. 2017	Sep. 2017	Oct. 2017	Oct. 2016	Aug. 2017	Sep. 2017
<b>Expenditure category</b>						
All Items.....	230.443	231.030	230.660	1.5	0.1	-0.2
All items (December 1977=100).....	374.943	375.898	375.297			
Food and beverages .....	241.870	242.352	243.137	1.0	0.5	0.3
Food .....	241.352	241.808	242.612	1.0	0.5	0.3
Food at home .....	226.561	226.883	227.606	0.5	0.5	0.3
Food away from home.....	266.222	266.908	267.849	1.7	0.6	0.4
Alcoholic beverages .....	246.791	247.648	248.135	1.3	0.5	0.2
Housing .....	222.978	223.455	222.389	2.1	-0.3	-0.5
Shelter .....	263.051	264.066	264.438	2.5	0.5	0.1
Rent of primary residence(1).....	262.826	263.669	264.525	3.0	0.6	0.3
Owners' equiv. rent of residences(1)(2).....	267.110	268.022	268.747	2.7	0.6	0.3
Owners' equiv. rent of primary residence(1)(2).....	267.071	267.979	268.703	2.7	0.6	0.3
Fuels and utilities.....	230.385	228.954	218.676	1.9	-5.1	-4.5
Household energy .....	190.462	188.891	178.315	1.5	-6.4	-5.6
Energy services(1) .....	198.993	196.870	185.151	1.1	-7.0	-6.0
Electricity(1).....	220.293	217.584	198.999	0.3	-9.7	-8.5
Utility (piped) gas service(1).....	151.868	150.832	151.019	2.7	-0.6	0.1
Household furnishings and operations.....	113.015	113.046	113.181	-0.9	0.1	0.1
Apparel .....	117.480	120.438	122.206	1.1	4.0	1.5
Transportation .....	194.846	196.614	195.305	1.7	0.2	-0.7
Private transportation .....	189.987	191.783	190.238	1.9	0.1	-0.8
New and used motor vehicles(3).....	96.146	95.273	94.597	-2.6	-1.6	-0.7
New vehicles .....	137.058	136.283	135.425	-2.3	-1.2	-0.6
New cars and trucks(3)(4) .....	96.799	96.266	95.671	-2.4	-1.2	-0.6
New cars(4) .....	133.125	132.554	131.640	-2.4	-1.1	-0.7
Used cars and trucks.....	139.009	136.715	135.278	-3.8	-2.7	-1.1
Motor fuel .....	213.316	225.246	218.769	9.1	2.6	-2.9
Gasoline (all types).....	212.206	224.023	217.436	9.0	2.5	-2.9
Gasoline, unleaded regular(4).....	206.236	218.049	211.413	9.2	2.5	-3.0
Gasoline, Unleaded midgrade(4)(5).....	248.507	258.803	252.232	8.4	1.5	-2.5
Gasoline, unleaded premium(4).....	235.659	246.917	241.312	7.9	2.4	-2.3
Medical Care .....	483.167	478.861	478.733	0.6	-0.9	0.0
Medical care commodities.....	401.076	388.445	386.422	0.4	-3.7	-0.5
Medical care services.....	510.477	509.160	509.709	0.6	-0.2	0.1
Professional services .....	415.458	415.589	415.674	2.0	0.1	0.0
Recreation(3).....	123.120	122.565	122.531	3.5	-0.5	0.0
Education and communication(3).....	136.534	137.110	137.489	-2.3	0.7	0.3
Other goods and services .....	416.243	416.205	418.438	1.9	0.5	0.5
<b>Commodity and Service Group</b>						
All Items.....	230.443	231.030	230.660	1.5	0.1	-0.2
Commodities .....	176.856	177.734	177.462	0.6	0.3	-0.2
Commodities less food & beverages.....	145.408	146.417	145.731	0.3	0.2	-0.5
Nondurables less food & beverages .....	190.235	193.642	193.071	2.8	1.5	-0.3
Nondurables less food, beverages, and apparel .....	237.948	241.662	239.590	3.4	0.7	-0.9
Durables .....	102.247	101.408	100.682	-3.0	-1.5	-0.7
Services.....	285.686	285.978	285.509	2.0	-0.1	-0.2
Rent of shelter(2).....	270.338	271.397	271.784	2.5	0.5	0.1
Transportation services .....	302.705	303.025	305.915	2.7	1.1	1.0

Note: See footnotes at end of table.

**Table 1. Consumer Price Index for All Urban Consumers (CPI-U): Indexes and percent changes for selected periods Midwest (1982-84=100 unless otherwise noted) - Continued**

Item and Group	Indexes			Percent change from-		
	Aug. 2017	Sep. 2017	Oct. 2017	Oct. 2016	Aug. 2017	Sep. 2017
Other services .....	337.278	337.322	338.254	1.2	0.3	0.3
<b>Special aggregate indexes:</b>						
All items less medical care .....	218.478	219.299	218.917	1.5	0.2	-0.2
All items less food .....	228.548	229.155	228.598	1.5	0.0	-0.2
All items less shelter.....	220.971	221.411	220.774	1.0	-0.1	-0.3
Commodities less food .....	148.576	149.586	148.926	0.4	0.2	-0.4
Nondurables .....	215.676	217.704	217.776	1.8	1.0	0.0
Nondurables less food.....	193.221	196.484	195.972	2.7	1.4	-0.3
Nondurables less food and apparel.....	237.336	240.778	238.941	3.2	0.7	-0.8
Services less rent of shelter(2).....	319.064	318.538	317.109	1.5	-0.6	-0.4
Services less medical care services.....	268.924	269.332	268.789	2.2	-0.1	-0.2
Energy .....	201.139	205.385	196.531	5.0	-2.3	-4.3
All items less energy .....	236.196	236.430	236.893	1.2	0.3	0.2
All items less food and energy .....	235.978	236.172	236.574	1.2	0.3	0.2
Commodities less food and energy commodities .....	143.966	143.673	143.634	-1.1	-0.2	0.0
Energy commodities.....	212.363	224.265	218.390	9.2	2.8	-2.6
Services less energy services .....	297.025	297.574	298.292	2.1	0.4	0.2

**Footnotes**

(1) This index series was calculated using a Laspeyres estimator. All other item stratum index series were calculated using a geometric means estimator.

(2) Index is on a December 1982=100 base.

(3) Indexes on a December 1997=100 base.

(4) Special index based on a substantially smaller sample.

(5) Indexes on a December 1993=100 base.

Regions defined as the four Census regions. Midwest includes Illinois, Indiana, Iowa, Kansas, Michigan, Minnesota, Missouri, Nebraska, North Dakota, Ohio, South Dakota, and Wisconsin.

NOTE: Index applies to a month as a whole, not to any specific date. Data not seasonally adjusted.

**Table 2. Consumer Price Index for Urban Wage Earners and Clerical Workers (CPI-W): Indexes and percent changes for selected periods Midwest (1982-84=100 unless otherwise noted)**

Item and Group	Indexes			Percent change from-		
	Aug. 2017	Sep. 2017	Oct. 2017	Oct. 2016	Aug. 2017	Sep. 2017
<b>Expenditure category</b>						
All Items.....	224.366	225.026	224.515	1.4	0.1	-0.2
All items (December 1977=100).....	362.849	363.916	363.091			
Food and beverages .....	241.636	242.017	242.836	1.0	0.5	0.3
Food .....	241.079	241.457	242.305	0.9	0.5	0.4
Food at home .....	227.172	227.380	228.190	0.5	0.4	0.4
Food away from home.....	267.430	268.157	269.075	1.7	0.6	0.3
Alcoholic beverages .....	248.947	249.388	249.722	1.3	0.3	0.1
Housing .....	218.139	218.549	217.387	2.2	-0.3	-0.5
Shelter .....	251.896	252.777	253.310	2.6	0.6	0.2
Rent of primary residence(1).....	263.497	264.349	265.193	3.0	0.6	0.3
Owners' equiv. rent of residences(1)(2).....	248.822	249.654	250.329	2.6	0.6	0.3
Owners' equiv. rent of primary residence(1)(2).....	248.813	249.644	250.318	2.6	0.6	0.3
Fuels and utilities.....	231.522	230.171	219.594	1.9	-5.2	-4.6
Household energy .....	191.207	189.733	178.918	1.4	-6.4	-5.7
Energy services(1) .....	198.372	196.287	184.290	0.9	-7.1	-6.1
Electricity(1).....	218.128	215.566	196.962	0.3	-9.7	-8.6
Utility (piped) gas service(1).....	153.131	151.996	152.279	2.4	-0.6	0.2
Household furnishings and operations.....	110.500	110.651	110.759	-1.2	0.2	0.1
Apparel .....	115.460	118.967	121.013	2.3	4.8	1.7
Transportation .....	192.159	194.125	192.453	1.8	0.2	-0.9
Private transportation .....	188.974	190.954	189.185	1.9	0.1	-0.9
New and used motor vehicles(3).....	95.753	94.738	93.973	-2.8	-1.9	-0.8
New vehicles .....	140.273	139.652	138.740	-2.0	-1.1	-0.7
Used cars and trucks.....	139.530	137.237	135.805	-3.8	-2.7	-1.0
Motor fuel .....	213.650	225.531	219.318	9.1	2.7	-2.8
Gasoline (all types).....	212.444	224.201	217.896	9.1	2.6	-2.8
Gasoline, unleaded regular(4).....	206.300	218.035	211.709	9.3	2.6	-2.9
Gasoline, unleaded midgrade(4)(5).....	248.312	258.464	252.073	8.4	1.5	-2.5
Gasoline, unleaded premium(4).....	235.266	246.499	241.115	7.9	2.5	-2.2
Medical Care .....	488.861	483.706	483.322	0.4	-1.1	-0.1
Medical care commodities.....	393.256	378.668	376.551	0.0	-4.2	-0.6
Medical care services.....	518.024	516.286	516.523	0.5	-0.3	0.0
Professional services .....	417.607	417.739	417.765	2.0	0.0	0.0
Recreation(3).....	118.213	118.023	117.797	3.0	-0.4	-0.2
Education and communication(3).....	126.865	127.265	127.597	-3.5	0.6	0.3
Other goods and services .....	464.652	464.575	467.854	2.2	0.7	0.7
<b>Commodity and Service Group</b>						
All Items.....	224.366	225.026	224.515	1.4	0.1	-0.2
Commodities .....	179.236	180.292	179.907	0.8	0.4	-0.2
Commodities less food & beverages.....	149.030	150.318	149.470	0.7	0.3	-0.6
Nondurables less food & beverages .....	197.823	202.026	201.225	3.6	1.7	-0.4
Nondurables less food, beverages, and apparel .....	248.392	253.096	250.726	3.9	0.9	-0.9
Durables .....	103.964	103.064	102.239	-3.1	-1.7	-0.8
Services.....	277.548	277.805	277.150	1.8	-0.1	-0.2
Rent of shelter(2).....	250.294	251.181	251.715	2.6	0.6	0.2
Transportation services .....	305.142	305.315	308.117	2.8	1.0	0.9
Other services .....	308.224	308.634	309.201	0.2	0.3	0.2
<b>Special aggregate indexes:</b>						

Note: See footnotes at end of table.

**Table 2. Consumer Price Index for Urban Wage Earners and Clerical Workers (CPI-W): Indexes and percent changes for selected periods Midwest (1982-84=100 unless otherwise noted) - Continued**

Item and Group	Indexes			Percent change from-		
	Aug. 2017	Sep. 2017	Oct. 2017	Oct. 2016	Aug. 2017	Sep. 2017
All items less medical care .....	214.228	215.111	214.596	1.5	0.2	-0.2
All items less food .....	220.940	221.643	220.916	1.5	0.0	-0.3
All items less shelter.....	216.993	217.581	216.693	0.9	-0.1	-0.4
Commodities less food .....	152.013	153.288	152.463	0.8	0.3	-0.5
Nondurables .....	220.019	222.422	222.390	2.2	1.1	0.0
Nondurables less food.....	200.431	204.448	203.704	3.4	1.6	-0.4
Nondurables less food and apparel.....	246.851	251.203	249.053	3.7	0.9	-0.9
Services less rent of shelter(2).....	281.529	281.089	279.220	1.0	-0.8	-0.7
Services less medical care services.....	261.654	262.030	261.324	2.0	-0.1	-0.3
Energy .....	200.819	205.543	196.906	5.3	-1.9	-4.2
All items less energy .....	229.174	229.357	229.808	1.0	0.3	0.2
All items less food and energy .....	226.943	227.090	227.468	1.0	0.2	0.2
Commodities less food and energy commodities .....	146.622	146.242	146.164	-1.1	-0.3	-0.1
Energy commodities.....	212.770	224.616	218.976	9.3	2.9	-2.5
Services less energy services .....	288.156	288.698	289.419	1.9	0.4	0.2

**Footnotes**

(1) This index series was calculated using a Laspeyres estimator. All other item stratum index series were calculated using a geometric means estimator.

(2) Index is on a December 1984=100 base.

(3) Indexes on a December 1997=100 base.

(4) Special index based on a substantially smaller sample.

(5) Indexes on a December 1993=100 base.

Regions defined as the four Census regions. Midwest includes Illinois, Indiana, Iowa, Kansas, Michigan, Minnesota, Missouri, Nebraska, North Dakota, Ohio, South Dakota, and Wisconsin.

NOTE: Index applies to a month as a whole, not to any specific date. Data not seasonally adjusted.