



For Release: Wednesday, December 13, 2017

17-1661-KAN

MOUNTAIN-PLAINS INFORMATION OFFICE: Kansas City, Mo.

Technical information: (816) 285-7000 BLSInfoKansasCity@bls.gov www.bls.gov/regions/mountain-plains

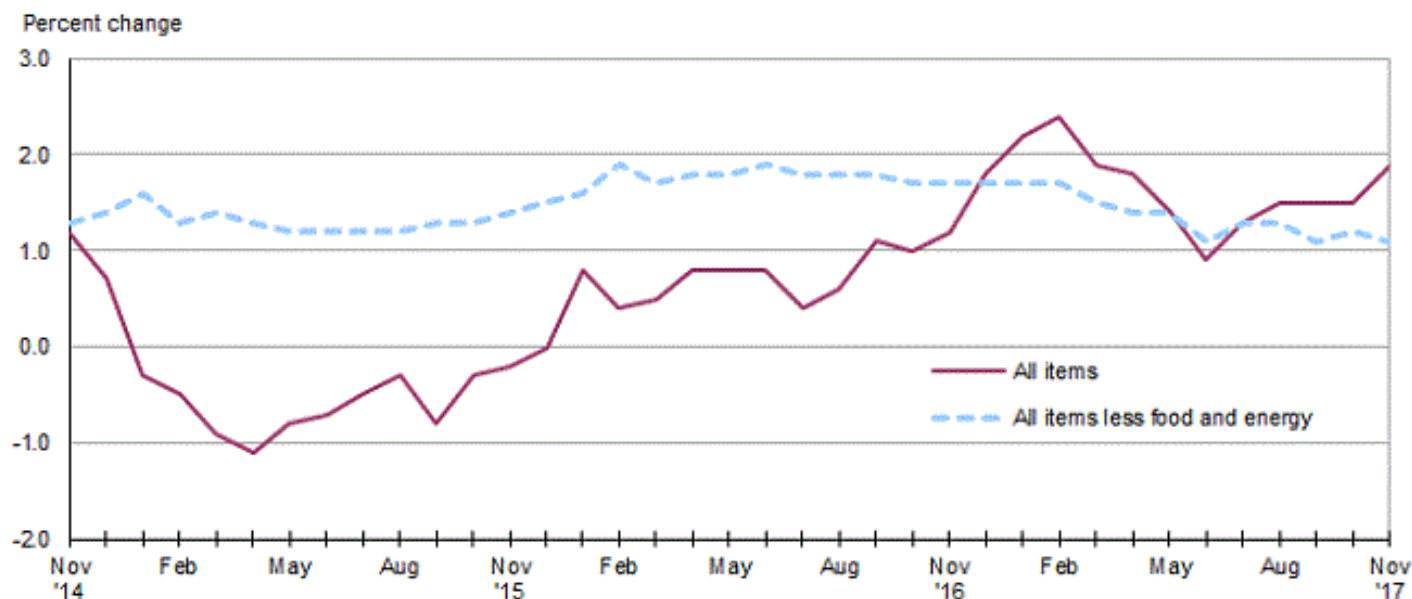
Media contact: (816) 285-7000

Consumer Price Index, Midwest Region – November 2017

Prices in the Midwest up 0.2 percent in November and 1.9 percent higher over the year

The Consumer Price Index for All Urban Consumers (CPI-U) in the Midwest turned up 0.2 percent in November, following a decrease of the same magnitude in the prior month, the U.S. Bureau of Labor Statistics reported today. Higher costs for gasoline (7.7 percent) led the advance. Overall, energy prices were up 4.3 percent over the month. Food prices were down 0.2 percent in November and the index for all items less food and energy was virtually unchanged (-0.1 percent). (Data in this report are not seasonally adjusted. Accordingly, month-to-month changes may reflect the impact of seasonal influences.)

Chart 1. Over-the-year percent change in CPI-U, Midwest region, November 2014–November 2017



Source: U.S. Bureau of Labor Statistics.

The CPI-U for the Midwest advanced 1.9 percent from November 2016 to November 2017. (See [chart 1](#) and [table A](#).) The energy index, which includes motor fuel and household fuels, rose 12.8 percent and food prices increased 1.1 percent. Excluding food and energy, the CPI-U was up 1.1 percent over the year. (See [table 1](#).)

Food

Food prices in the Midwest decreased 0.2 percent in November following a gain of 0.3 percent in October. Costs for food at home were 0.5 percent lower over the month, but prices for food away from home were up 0.2 percent.

From November 2016 to November 2017, the index for food was 1.1 percent higher. Prices for food away from home rose 1.8 percent and prices for food at home were up 0.7 percent.

Energy

The energy index turned up 4.3 percent in November after declining 4.3 percent in the prior month. The advance was largely attributable to a 7.7-percent increase in gasoline prices. Electricity costs rose 1.6 percent in November following declines of 8.5 and 1.2 percent in October and September, respectively. Costs for utility (piped) gas service (-0.1 percent) were virtually unchanged over the month.

Energy costs rose 12.8 percent from November 2016 to November 2017 led by a 25.0-percent increase in gasoline prices. Higher costs for electricity (2.8 percent) and utility (piped) gas service (1.6 percent) also contributed to the increase.

All items less food and energy

The index for all items less food and energy for the Midwest was little changed in November, down a slight 0.1 percent, due to offsetting movements within the index. Higher costs for shelter (0.2 percent) had the largest upward impact on the November index. Prices for apparel (-3.0 percent), household furnishings and operations (-1.0 percent) and recreation (-0.7 percent) were among those that were down over the month.

The index for all items less food and energy was up 1.1 percent from November 2016 to November 2017. Higher costs for shelter (2.5 percent) led the increase. Among the indexes that registered offsetting movements were new and used motor vehicles (-2.0 percent) and education and communication (-1.9 percent).

The Midwest Consumer Price Index for All Urban Consumers (CPI-U) stood at 231.084 in November 2017. A typical market basket of goods and services that cost \$100.00 in the 1982-84 base period cost \$231.08 in November 2017.

CPI-W

In November, the Midwest Consumer Price Index for Urban Wage Earners and Clerical Workers (CPI-W) was 225.210. The CPI-W increased 0.3 percent in November and rose 2.1 percent over the year.

Table A. Midwest region CPI-U 1-month and 12-month percent changes, all items index, not seasonally adjusted

Month	2013		2014		2015		2016		2017	
	1-month	12-month	1-month	12-month	1-month	12-month	1-month	12-month	1-month	12-month
January.....	0.1	1.3	0.5	1.4	-0.6	-0.3	0.3	0.8	0.7	2.2
February.....	1.1	2.2	0.6	0.9	0.3	-0.5	0.0	0.4	0.2	2.4
March.....	0.2	1.4	0.9	1.5	0.6	-0.9	0.6	0.5	0.1	1.9
April.....	-0.1	1.2	0.3	1.9	0.1	-1.1	0.4	0.8	0.4	1.8
May.....	0.5	1.8	0.2	1.6	0.4	-0.8	0.4	0.8	0.0	1.4
June.....	0.3	2.2	0.5	1.7	0.5	-0.7	0.6	0.8	0.0	0.9
July.....	-0.4	1.8	-0.3	1.8	0.0	-0.5	-0.5	0.4	0.0	1.3
August.....	0.1	1.2	-0.2	1.6	0.0	-0.3	0.1	0.6	0.3	1.5
September.....	0.1	1.0	0.1	1.6	-0.3	-0.8	0.2	1.1	0.3	1.5
October.....	-0.5	0.8	-0.5	1.6	-0.1	-0.3	-0.1	1.0	-0.2	1.5
November.....	-0.2	1.0	-0.6	1.2	-0.5	-0.2	-0.3	1.2	0.2	1.9
December.....	-0.2	1.0	-0.7	0.7	-0.6	0.0	0.1	1.8		

The December 2017 Consumer Price Index for the Midwest region is scheduled to be released on Friday, January 12, 2018.

Technical Note

The Consumer Price Index (CPI) is a measure of the average change in prices over time in a fixed market basket of goods and services. The Bureau of Labor Statistics publishes CPIs for two population groups: (1) a CPI for All Urban Consumers (CPI-U) which covers approximately 89 percent of the total population and (2) a CPI for Urban Wage Earners and Clerical Workers (CPI-W) which covers approximately 28 percent of the total population. The CPI-U includes, in addition to wage earners and clerical workers, groups such as professional, managerial, and technical workers, the self-employed, short-term workers, the unemployed, and retirees and others not in the labor force.

The CPI is based on prices of food, clothing, shelter, and fuels, transportation fares, charges for doctors' and dentists' services, drugs, and the other goods and services that people buy for day-to-day living. Each month, prices are collected in 87 urban areas across the country from about 6,000 housing units and approximately 24,000 retail establishments—department stores, supermarkets, hospitals, filling stations, and other types of stores and service establishments. All taxes directly associated with the purchase and use of items are included in the index.

The index measures price changes from a designated reference date (1982-84) that equals 100.0. An increase of 16.5 percent, for example, is shown as 116.5. This change can also be expressed in dollars as follows: the price of a base period "market basket" of goods and services in the CPI has risen from \$10 in 1982-84 to \$11.65. For further details see the CPI home page on the Internet at www.bls.gov/cpi and the BLS Handbook of Methods, Chapter 17, The Consumer Price Index, available on the Internet at www.bls.gov/opub/hom/homch17_a.htm.

In calculating the index, price changes for the various items in each location are averaged together with weights that represent their importance in the spending of the appropriate population group. Local data are then combined to obtain a U.S. city average. Because the sample size of a local area is smaller, the local area index is subject to substantially more sampling and other measurement error than the national index. In addition, local indexes are not adjusted for seasonal influences. As a result, local area indexes show greater volatility than the national index, although their long-term trends are quite similar. **NOTE: Area indexes do not measure differences in the level of prices between areas; they only measure the average change in prices for each area since the base period.**

The Midwest region is comprised of Illinois, Indiana, Iowa, Kansas, Michigan, Minnesota, Missouri, Nebraska, North Dakota, Ohio, South Dakota, and Wisconsin.

Information in this release will be made available to sensory impaired individuals upon request. Voice phone: (202) 691-5200; Federal Relay Service: (800) 877-8339.

Table 1. Consumer Price Index for All Urban Consumers (CPI-U): Indexes and percent changes for selected periods Midwest (1982-84=100 unless otherwise noted)

Item and Group	Indexes			Percent change from-		
	Sep. 2017	Oct. 2017	Nov. 2017	Nov. 2016	Sep. 2017	Oct. 2017
Expenditure category						
All Items.....	231.030	230.660	231.084	1.9	0.0	0.2
All items (December 1977=100).....	375.898	375.297	375.987			
Food and beverages	242.352	243.137	242.643	1.2	0.1	-0.2
Food	241.808	242.612	242.006	1.1	0.1	-0.2
Food at home	226.883	227.606	226.388	0.7	-0.2	-0.5
Food away from home.....	266.908	267.849	268.290	1.8	0.5	0.2
Alcoholic beverages	247.648	248.135	249.271	2.1	0.7	0.5
Housing	223.455	222.389	222.701	2.2	-0.3	0.1
Shelter	264.066	264.438	264.847	2.5	0.3	0.2
Rent of primary residence(1).....	263.669	264.525	265.492	3.1	0.7	0.4
Owners' equiv. rent of residences(1)(2).....	268.022	268.747	269.506	2.7	0.6	0.3
Owners' equiv. rent of primary residence(1)(2).....	267.979	268.703	269.462	2.7	0.6	0.3
Fuels and utilities.....	228.954	218.676	220.900	3.2	-3.5	1.0
Household energy	188.891	178.315	180.422	3.0	-4.5	1.2
Energy services(1)	196.870	185.151	187.097	2.4	-5.0	1.1
Electricity(1).....	217.584	198.999	202.150	2.8	-7.1	1.6
Utility (piped) gas service(1).....	150.832	151.019	150.883	1.6	0.0	-0.1
Household furnishings and operations.....	113.046	113.181	112.010	-1.2	-0.9	-1.0
Apparel	120.438	122.206	118.508	-0.1	-1.6	-3.0
Transportation	196.614	195.305	198.648	4.8	1.0	1.7
Private transportation	191.783	190.238	193.768	5.2	1.0	1.9
New and used motor vehicles(3).....	95.273	94.597	94.619	-2.0	-0.7	0.0
New vehicles	136.283	135.425	135.939	-2.0	-0.3	0.4
New cars and trucks(3)(4).....	96.266	95.671	95.971	-2.2	-0.3	0.3
New cars(4).....	132.554	131.640	132.373	-2.0	-0.1	0.6
Used cars and trucks.....	136.715	135.278	134.252	-3.0	-1.8	-0.8
Motor fuel	225.246	218.769	235.477	24.9	4.5	7.6
Gasoline (all types).....	224.023	217.436	234.172	25.0	4.5	7.7
Gasoline, unleaded regular(4).....	218.049	211.413	228.189	25.7	4.7	7.9
Gasoline, Unleaded midgrade(4)(5).....	258.803	252.232	267.318	21.8	3.3	6.0
Gasoline, unleaded premium(4).....	246.917	241.312	256.103	19.9	3.7	6.1
Medical Care	478.861	478.733	479.998	0.6	0.2	0.3
Medical care commodities.....	388.445	386.422	388.850	1.9	0.1	0.6
Medical care services.....	509.160	509.709	510.553	0.2	0.3	0.2
Professional services	415.589	415.674	416.591	0.8	0.2	0.2
Recreation(3).....	122.565	122.531	121.690	2.7	-0.7	-0.7
Education and communication(3).....	137.110	137.489	137.609	-1.9	0.4	0.1
Other goods and services	416.205	418.438	418.869	2.1	0.6	0.1
Commodity and Service Group						
All Items.....	231.030	230.660	231.084	1.9	0.0	0.2
Commodities	177.734	177.462	177.879	2.0	0.1	0.2
Commodities less food & beverages.....	146.417	145.731	146.499	2.5	0.1	0.5
Nondurables less food & beverages	193.642	193.071	195.192	6.3	0.8	1.1
Nondurables less food, beverages, and apparel	241.662	239.590	245.449	8.4	1.6	2.4
Durables	101.408	100.682	100.394	-2.6	-1.0	-0.3
Services.....	285.978	285.509	285.940	1.9	0.0	0.2
Rent of shelter(2).....	271.397	271.784	272.242	2.6	0.3	0.2
Transportation services	303.025	305.915	305.863	1.9	0.9	0.0

Note: See footnotes at end of table.

Table 1. Consumer Price Index for All Urban Consumers (CPI-U): Indexes and percent changes for selected periods Midwest (1982-84=100 unless otherwise noted) - Continued

Item and Group	Indexes			Percent change from-		
	Sep. 2017	Oct. 2017	Nov. 2017	Nov. 2016	Sep. 2017	Oct. 2017
Other services	337.322	338.254	337.991	1.2	0.2	-0.1
Special aggregate indexes:						
All items less medical care	219.299	218.917	219.301	2.1	0.0	0.2
All items less food	229.155	228.598	229.187	2.1	0.0	0.3
All items less shelter.....	221.411	220.774	221.207	1.7	-0.1	0.2
Commodities less food	149.586	148.926	149.707	2.4	0.1	0.5
Nondurables	217.704	217.776	218.661	3.5	0.4	0.4
Nondurables less food.....	196.484	195.972	198.037	6.0	0.8	1.1
Nondurables less food and apparel.....	240.778	238.941	244.354	7.8	1.5	2.3
Services less rent of shelter(2).....	318.538	317.109	317.537	1.4	-0.3	0.1
Services less medical care services.....	269.332	268.789	269.190	2.2	-0.1	0.1
Energy	205.385	196.531	204.945	12.8	-0.2	4.3
All items less energy	236.430	236.893	236.533	1.1	0.0	-0.2
All items less food and energy	236.172	236.574	236.259	1.1	0.0	-0.1
Commodities less food and energy commodities	143.673	143.634	142.537	-1.1	-0.8	-0.8
Energy commodities.....	224.265	218.390	234.755	24.5	4.7	7.5
Services less energy services	297.574	298.292	298.567	1.9	0.3	0.1

Footnotes

(1) This index series was calculated using a Laspeyres estimator. All other item stratum index series were calculated using a geometric means estimator.

(2) Index is on a December 1982=100 base.

(3) Indexes on a December 1997=100 base.

(4) Special index based on a substantially smaller sample.

(5) Indexes on a December 1993=100 base.

Regions defined as the four Census regions. Midwest includes Illinois, Indiana, Iowa, Kansas, Michigan, Minnesota, Missouri, Nebraska, North Dakota, Ohio, South Dakota, and Wisconsin.

NOTE: Index applies to a month as a whole, not to any specific date. Data not seasonally adjusted.

Table 2. Consumer Price Index for Urban Wage Earners and Clerical Workers (CPI-W): Indexes and percent changes for selected periods Midwest (1982-84=100 unless otherwise noted)

Item and Group	Indexes			Percent change from-		
	Sep. 2017	Oct. 2017	Nov. 2017	Nov. 2016	Sep. 2017	Oct. 2017
Expenditure category						
All Items.....	225.026	224.515	225.210	2.1	0.1	0.3
All items (December 1977=100).....	363.916	363.091	364.214			
Food and beverages	242.017	242.836	242.131	1.2	0.0	-0.3
Food	241.457	242.305	241.499	1.1	0.0	-0.3
Food at home	227.380	228.190	226.782	0.7	-0.3	-0.6
Food away from home.....	268.157	269.075	269.519	1.8	0.5	0.2
Alcoholic beverages	249.388	249.722	250.670	1.9	0.5	0.4
Housing	218.549	217.387	217.930	2.3	-0.3	0.2
Shelter	252.777	253.310	253.878	2.6	0.4	0.2
Rent of primary residence(1).....	264.349	265.193	266.169	3.1	0.7	0.4
Owners' equiv. rent of residences(1)(2).....	249.654	250.329	251.043	2.6	0.6	0.3
Owners' equiv. rent of primary residence(1)(2).....	249.644	250.318	251.028	2.6	0.6	0.3
Fuels and utilities.....	230.171	219.594	222.218	3.3	-3.5	1.2
Household energy	189.733	178.918	181.407	3.1	-4.4	1.4
Energy services(1)	196.287	184.290	186.642	2.6	-4.9	1.3
Electricity(1).....	215.566	196.962	200.725	3.1	-6.9	1.9
Utility (piped) gas service(1).....	151.996	152.279	152.019	1.5	0.0	-0.2
Household furnishings and operations.....	110.651	110.759	109.533	-1.5	-1.0	-1.1
Apparel	118.967	121.013	117.118	0.6	-1.6	-3.2
Transportation	194.125	192.453	196.199	5.5	1.1	1.9
Private transportation	190.954	189.185	193.036	5.8	1.1	2.0
New and used motor vehicles(3).....	94.738	93.973	93.886	-2.1	-0.9	-0.1
New vehicles	139.652	138.740	139.205	-1.7	-0.3	0.3
Used cars and trucks.....	137.237	135.805	134.770	-3.1	-1.8	-0.8
Motor fuel	225.531	219.318	235.816	24.8	4.6	7.5
Gasoline (all types).....	224.201	217.896	234.404	24.9	4.6	7.6
Gasoline, unleaded regular(4).....	218.035	211.709	228.239	25.7	4.7	7.8
Gasoline, unleaded midgrade(4)(5).....	258.464	252.073	267.111	21.7	3.3	6.0
Gasoline, unleaded premium(4).....	246.499	241.115	255.690	19.8	3.7	6.0
Medical Care	483.706	483.322	484.592	0.4	0.2	0.3
Medical care commodities.....	378.668	376.551	379.172	1.6	0.1	0.7
Medical care services.....	516.286	516.523	517.299	0.1	0.2	0.2
Professional services	417.739	417.765	418.548	0.7	0.2	0.2
Recreation(3).....	118.023	117.797	117.313	2.6	-0.6	-0.4
Education and communication(3).....	127.265	127.597	127.749	-3.1	0.4	0.1
Other goods and services	464.575	467.854	468.578	2.5	0.9	0.2
Commodity and Service Group						
All Items.....	225.026	224.515	225.210	2.1	0.1	0.3
Commodities	180.292	179.907	180.586	2.5	0.2	0.4
Commodities less food & beverages.....	150.318	149.470	150.674	3.4	0.2	0.8
Nondurables less food & beverages	202.026	201.225	204.650	8.0	1.3	1.7
Nondurables less food, beverages, and apparel	253.096	250.726	258.226	10.0	2.0	3.0
Durables	103.064	102.239	101.762	-2.7	-1.3	-0.5
Services.....	277.805	277.150	277.876	1.8	0.0	0.3
Rent of shelter(2).....	251.181	251.715	252.320	2.6	0.5	0.2
Transportation services	305.315	308.117	308.537	2.1	1.1	0.1
Other services	308.634	309.201	309.521	0.4	0.3	0.1
Special aggregate indexes:						

Note: See footnotes at end of table.

Table 2. Consumer Price Index for Urban Wage Earners and Clerical Workers (CPI-W): Indexes and percent changes for selected periods Midwest (1982-84=100 unless otherwise noted) - Continued

Item and Group	Indexes			Percent change from-		
	Sep. 2017	Oct. 2017	Nov. 2017	Nov. 2016	Sep. 2017	Oct. 2017
All items less medical care	215.111	214.596	215.268	2.3	0.1	0.3
All items less food	221.643	220.916	221.849	2.3	0.1	0.4
All items less shelter.....	217.581	216.693	217.440	1.9	-0.1	0.3
Commodities less food	153.288	152.463	153.667	3.3	0.2	0.8
Nondurables	222.422	222.390	223.863	4.3	0.6	0.7
Nondurables less food.....	204.448	203.704	207.007	7.6	1.3	1.6
Nondurables less food and apparel.....	251.203	249.053	256.010	9.3	1.9	2.8
Services less rent of shelter(2).....	281.089	279.220	280.011	1.1	-0.4	0.3
Services less medical care services.....	262.030	261.324	262.044	2.1	0.0	0.3
Energy	205.543	196.906	205.879	13.6	0.2	4.6
All items less energy	229.357	229.808	229.525	1.0	0.1	-0.1
All items less food and energy	227.090	227.468	227.281	1.0	0.1	-0.1
Commodities less food and energy commodities	146.242	146.164	145.017	-1.0	-0.8	-0.8
Energy commodities.....	224.616	218.976	235.080	24.4	4.7	7.4
Services less energy services	288.698	289.419	289.950	1.8	0.4	0.2

Footnotes

(1) This index series was calculated using a Laspeyres estimator. All other item stratum index series were calculated using a geometric means estimator.

(2) Index is on a December 1984=100 base.

(3) Indexes on a December 1997=100 base.

(4) Special index based on a substantially smaller sample.

(5) Indexes on a December 1993=100 base.

Regions defined as the four Census regions. Midwest includes Illinois, Indiana, Iowa, Kansas, Michigan, Minnesota, Missouri, Nebraska, North Dakota, Ohio, South Dakota, and Wisconsin.

NOTE: Index applies to a month as a whole, not to any specific date. Data not seasonally adjusted.