



**For Release: Tuesday, March 13, 2018**

**18-395-KAN**

MOUNTAIN-PLAINS INFORMATION OFFICE: Kansas City, Mo.

Technical information: (816) 285-7000 BLSInfoKansasCity@bls.gov www.bls.gov/regions/mountain-plains

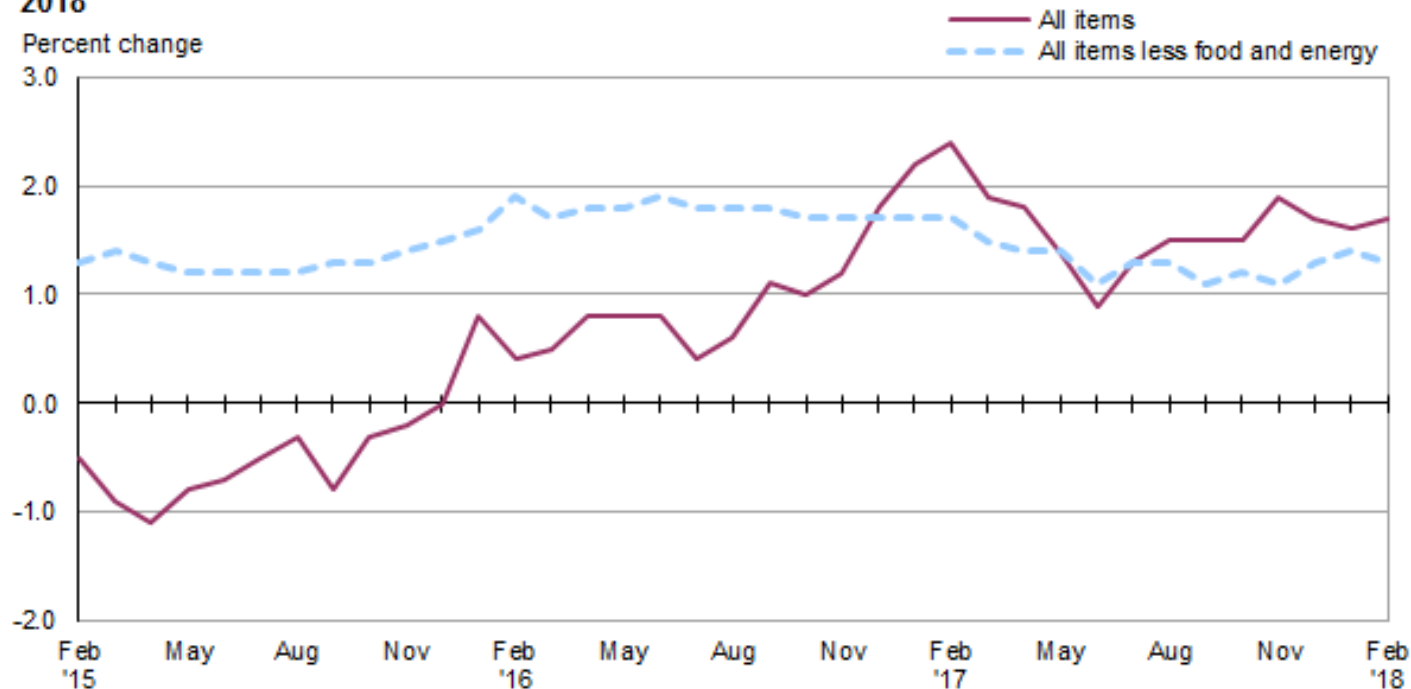
Media contact: (816) 285-7000

## Consumer Price Index, Midwest Region – February 2018

**Prices in the Midwest up 0.2 percent in February and 1.7 percent higher over the year**

The Consumer Price Index for All Urban Consumers (CPI-U) in the Midwest rose 0.2 percent in February after increasing 0.6 percent in January, the U.S. Bureau of Labor Statistics reported today. Higher costs for shelter (0.4 percent) and apparel (2.7 percent) led the increase. Energy prices were down 0.6 percent over the month. Prices for food were little changed, up 0.1 percent, and the index for all items less food and energy rose 0.3 percent. (Data in this report are not seasonally adjusted. Accordingly, month-to-month changes may reflect the impact of seasonal influences.)

**Chart 1. Over-the-year percent change in CPI-U, Midwest region, February 2015–February 2018**



Source: U.S. Bureau of Labor Statistics.

The CPI-U for the Midwest advanced 1.7 percent from February 2017 to February 2018. (See [chart 1](#) and [table A](#).) The energy index, which includes motor fuel and household fuels, rose 6.5 percent and food prices increased 1.2 percent. Excluding food and energy, the CPI-U was up 1.3 percent over the year. (See [table 1](#).)

## Food

Food prices in the Midwest increased 0.1 percent in February. Costs for food at home changed little, increasing 0.1 percent, following an advance of 0.5 percent in January. The index for food away from home was up 0.2 percent over the month.

From February 2017 to February 2018, the index for food was 1.2 percent higher. Prices for food away from home rose 2.1 percent and prices for food at home were up 0.6 percent over the year.

## Energy

The energy index turned down 0.6 percent in February following an increase of 2.7 percent in January. Gasoline prices led the decline with a decrease of 1.9 percent. Lower costs for electricity also contributed to the downward movement with a decrease of 0.3 percent. Costs for utility (piped) gas service were up 3.6 percent after declining 1.5 percent in January.

Energy costs rose 6.5 percent from February 2017 to February 2018 led by an 11.9-percent increase in gasoline prices. Higher costs for electricity (1.4 percent) and utility (piped) gas service (1.2 percent) also contributed to the increase.

## All items less food and energy

The index for all items less food and energy for the Midwest was up 0.3 percent in February following an increase of 0.5 percent in the prior month. Higher costs for shelter (0.4 percent) had the largest upward impact on the index, followed by prices for apparel (2.7 percent). The other goods and services index (-1.1 percent) was among those that were lower over the month.

The index for all items less food and energy was up 1.3 percent from February 2017 to February 2018. Higher costs for shelter (2.8 percent) led the increase.

The Midwest Consumer Price Index for All Urban Consumers (CPI-U) stood at 232.512 in February 2018. A typical market basket of goods and services that cost \$100.00 in the 1982-84 base period cost \$232.51 in February 2018.

## CPI-W

In February, the Midwest Consumer Price Index for Urban Wage Earners and Clerical Workers (CPI-W) was 226.564. The CPI-W increased 0.2 percent in February and rose 1.8 percent over the year.

**Table A. Midwest region CPI-U 1-month and 12-month percent changes, all items index, not seasonally adjusted**

Month	2014		2015		2016		2017		2018	
	1-month	12-month	1-month	12-month	1-month	12-month	1-month	12-month	1-month	12-month
January.....	0.5	1.4	-0.6	-0.3	0.3	0.8	0.7	2.2	0.6	1.6
February.....	0.6	0.9	0.3	-0.5	0.0	0.4	0.2	2.4	0.2	1.7
March.....	0.9	1.5	0.6	-0.9	0.6	0.5	0.1	1.9		
April.....	0.3	1.9	0.1	-1.1	0.4	0.8	0.4	1.8		
May.....	0.2	1.6	0.4	-0.8	0.4	0.8	0.0	1.4		
June.....	0.5	1.7	0.5	-0.7	0.6	0.8	0.0	0.9		
July.....	-0.3	1.8	0.0	-0.5	-0.5	0.4	0.0	1.3		
August.....	-0.2	1.6	0.0	-0.3	0.1	0.6	0.3	1.5		
September.....	0.1	1.6	-0.3	-0.8	0.2	1.1	0.3	1.5		
October.....	-0.5	1.6	-0.1	-0.3	-0.1	1.0	-0.2	1.5		
November.....	-0.6	1.2	-0.5	-0.2	-0.3	1.2	0.2	1.9		

**Table A. Midwest region CPI-U 1-month and 12-month percent changes, all items index, not seasonally adjusted - Continued**

Month	2014		2015		2016		2017		2018	
	1-month	12-month	1-month	12-month	1-month	12-month	1-month	12-month	1-month	12-month
December .....	-0.7	0.7	-0.6	0.0	0.1	1.8	-0.2	1.7		

**The March 2018 Consumer Price Index for the Midwest region is scheduled to be released on Wednesday, April 11, 2018.**

### **Consumer Price Index Geographic Revision for 2018**

In January 2018, BLS introduced a new geographic area sample for the Consumer Price Index (CPI). The indexes using the new structure were published for the first time last month.

Additional information on the geographic revision is available at: <https://www.bls.gov/cpi/additional-resources/geographic-revision-2018.htm>.

### **Technical Note**

The Consumer Price Index (CPI) is a measure of the average change in prices over time in a fixed market basket of goods and services. The Bureau of Labor Statistics publishes CPIs for two population groups: (1) a CPI for All Urban Consumers (CPI-U) which covers approximately 93 percent of the total population and (2) a CPI for Urban Wage Earners and Clerical Workers (CPI-W) which covers approximately 29 percent of the total population. The CPI-U includes, in addition to wage earners and clerical workers, groups such as professional, managerial, and technical workers, the self-employed, short-term workers, the unemployed, and retirees and others not in the labor force.

The CPI is based on prices of food, clothing, shelter, and fuels, transportation fares, charges for doctors' and dentists' services, drugs, and the other goods and services that people buy for day-to-day living. Each month, prices are collected in 75 urban areas across the country from about 5,000 housing units and approximately 22,000 retail establishments—department stores, supermarkets, hospitals, filling stations, and other types of stores and service establishments. All taxes directly associated with the purchase and use of items are included in the index.

The index measures price changes from a designated reference date (1982-84) that equals 100.0. An increase of 16.5 percent, for example, is shown as 116.5. This change can also be expressed in dollars as follows: the price of a base period "market basket" of goods and services in the CPI has risen from \$10 in 1982-84 to \$11.65. For further details see the CPI home page on the Internet at [www.bls.gov/cpi](http://www.bls.gov/cpi) and the BLS Handbook of Methods, Chapter 17, The Consumer Price Index, available on the Internet at [www.bls.gov/opub/hom/pdf/homch17.pdf](http://www.bls.gov/opub/hom/pdf/homch17.pdf).

In calculating the index, price changes for the various items in each location are averaged together with weights that represent their importance in the spending of the appropriate population group. Local data are then combined to obtain a U.S. city average. Because the sample size of a local area is smaller, the local area index is subject to substantially more sampling and other measurement error than the national index. In addition, local indexes are not adjusted for seasonal influences. As a result, local area indexes show greater

volatility than the national index, although their long-term trends are quite similar. **NOTE: Area indexes do not measure differences in the level of prices between cities; they only measure the average change in prices for each area since the base period.**

The Midwest region is comprised of Illinois, Indiana, Iowa, Kansas, Michigan, Minnesota, Missouri, Nebraska, North Dakota, Ohio, South Dakota, and Wisconsin.

Information in this release will be made available to sensory impaired individuals upon request. Voice phone: (202) 691-5200; Federal Relay Service: (800) 877-8339.

**Table 1. Consumer Price Index for All Urban Consumers (CPI-U): Indexes and percent changes for selected periods, Midwest Region, (1982-84=100 unless otherwise noted) (not seasonally adjusted)**

Expenditure category	Indexes			Percent change from		
	Dec. 2017	Jan. 2018	Feb. 2018	Feb. 2017	Dec. 2017	Jan. 2018
All items.....	230.548	232.028	232.512	1.7	0.9	0.2
All items (December 1977 = 100).....	375.115	377.523	378.309			
Food and beverages .....	242.295	243.305	243.603	1.3	0.5	0.1
Food .....	241.621	242.601	242.865	1.2	0.5	0.1
Food at home .....	225.452	226.656	226.810	0.6	0.6	0.1
Cereals and bakery products .....	258.197	258.660	258.523		0.1	-0.1
Meats, poultry, fish, and eggs.....	245.403	247.204	246.250		0.3	-0.4
Dairy and related products .....	195.656	199.915	197.690		1.0	-1.1
Fruits and vegetables .....	268.746	271.572	270.372		0.6	-0.4
Nonalcoholic beverages and beverage materials.....	158.899	159.503	160.943		1.3	0.9
Other food at home .....	196.735	196.058	197.900		0.6	0.9
Food away from home.....	268.849	269.502	269.935	2.1	0.4	0.2
Alcoholic beverages .....	249.453	250.865	251.636	2.4	0.9	0.3
Housing .....	222.996	223.996	224.834	2.3	0.8	0.4
Shelter .....	265.446	266.364	267.342	2.8	0.7	0.4
Rent of primary residence(1).....	266.506	267.255	267.484	3.3	0.4	0.1
Owners' equivalent rent of residences(1)(2).....	270.592	271.067	271.579	2.9	0.4	0.2
Owners' equivalent rent of primary residence(1)(2).....	270.552	271.027	271.543	2.9	0.4	0.2
Fuels and utilities.....	220.094	220.692	222.393	1.9	1.0	0.8
Household energy .....	179.467	180.174	181.728	1.6	1.3	0.9
Energy services(1) .....	185.913	186.508	188.250	1.3	1.3	0.9
Electricity(1).....	198.794	201.185	200.577	1.4	0.9	-0.3
Utility (piped) gas service(1).....	153.307	150.985	156.381	1.2	2.0	3.6
Household furnishings and operations.....	112.074	113.564	113.552	-0.6	1.3	0.0
Apparel.....	114.054	116.481	119.680	2.5	4.9	2.7
Transportation .....	196.875	200.064	199.926	3.1	1.5	-0.1
Private transportation .....	192.101	195.032	194.848	3.5	1.4	-0.1
New and used motor vehicles(3).....	95.696	95.980	96.185	-1.1	0.5	0.2
New vehicles .....	137.575	137.200	136.898	-2.5	-0.5	-0.2
New cars and trucks(3)(4).....	97.136	96.915	96.702	-2.4	-0.4	-0.2
New cars(4).....	133.620	133.447	132.825	-3.5	-0.6	-0.5
Used cars and trucks.....	135.560	136.232	137.587	-0.6	1.5	1.0
Motor fuel .....	220.298	231.077	226.835	12.0	3.0	-1.8
Gasoline (all types).....	218.851	229.620	225.196	11.9	2.9	-1.9
Gasoline, unleaded regular(4).....	212.844	223.556	219.143	12.3	3.0	-2.0
Gasoline, unleaded midgrade(4)(5).....	251.906	264.494	259.166	8.9	2.9	-2.0
Gasoline, unleaded premium(4).....	242.985	252.114	248.450	9.8	2.2	-1.5
Motor vehicle insurance(6).....	718.922	725.538	738.214		2.7	1.7
Medical care .....	480.251	481.011	481.849	0.3	0.3	0.2
Medical care commodities.....	391.232	388.506	390.831	0.6	-0.1	0.6
Medical care services.....	510.045	511.988	512.320	0.2	0.4	0.1
Professional services .....	416.243	417.348	417.223	0.4	0.2	0.0
Recreation(3).....	121.510	122.318	122.405	1.3	0.7	0.1
Education and communication(3).....	137.966	137.948	137.778	-1.6	-0.1	-0.1
Tuition, other school fees, and child care(6) ..	1,181.851	1,183.109	1,183.479		0.1	0.0

Note: See footnotes at end of table.

**Table 1. Consumer Price Index for All Urban Consumers (CPI-U): Indexes and percent changes for selected periods, Midwest Region, (1982-84=100 unless otherwise noted) (not seasonally adjusted) - Continued**

Expenditure category	Indexes			Percent change from		
	Dec. 2017	Jan. 2018	Feb. 2018	Feb. 2017	Dec. 2017	Jan. 2018
Other goods and services .....	417.834	418.840	414.035	0.4	-0.9	-1.1
<b>Commodity and service group</b>						
Commodities .....	176.384	178.028	178.223	1.2	1.0	0.1
Commodities less food and beverages .....	144.591	146.405	146.553	1.1	1.4	0.1
Nondurables less food and beverages .....	189.811	193.864	194.097	3.7	2.3	0.1
Durables .....	101.194	101.307	101.384	-2.3	0.2	0.1
Services .....	286.383	287.679	288.465	2.0	0.7	0.3
<b>Special aggregate indexes</b>						
All items less shelter .....	220.262	221.948	222.264	1.2	0.9	0.1
All items less medical care .....	218.728	220.242	220.709	1.8	0.9	0.2
Commodities less food .....	147.844	149.657	149.821	1.2	1.3	0.1
Nondurables .....	215.654	218.312	218.578	2.4	1.4	0.1
Nondurables less food .....	192.968	196.869	197.132	3.6	2.2	0.1
Services less rent of shelter(2) .....	317.828	319.576	320.163	1.2	0.7	0.2
Services less medical care services .....	269.701	270.949	271.769	2.3	0.8	0.3
Energy .....	197.850	203.251	202.097	6.5	2.1	-0.6
All items less energy .....	236.638	237.736	238.392	1.3	0.7	0.3
All items less food and energy .....	236.452	237.575	238.302	1.3	0.8	0.3

**Footnotes**

(1) This index series was calculated using a Laspeyres estimator. All other item stratum index series were calculated using a geometric means estimator.

(2) Indexes on a December 1982=100 base.

(3) Indexes on a December 1997=100 base.

(4) Special index based on a substantially smaller sample.

(5) Indexes on a December 1993=100 base.

(6) Indexes on a December 1977=100 base.

Note: Index applies to a month as a whole, not to any specific date.