



**For Release: Thursday, May 10, 2018**

**18-784-KAN**

MOUNTAIN-PLAINS INFORMATION OFFICE: Kansas City, Mo.

Technical information: (816) 285-7000 BLSInfoKansasCity@bls.gov [www.bls.gov/regions/mountain-plains](http://www.bls.gov/regions/mountain-plains)

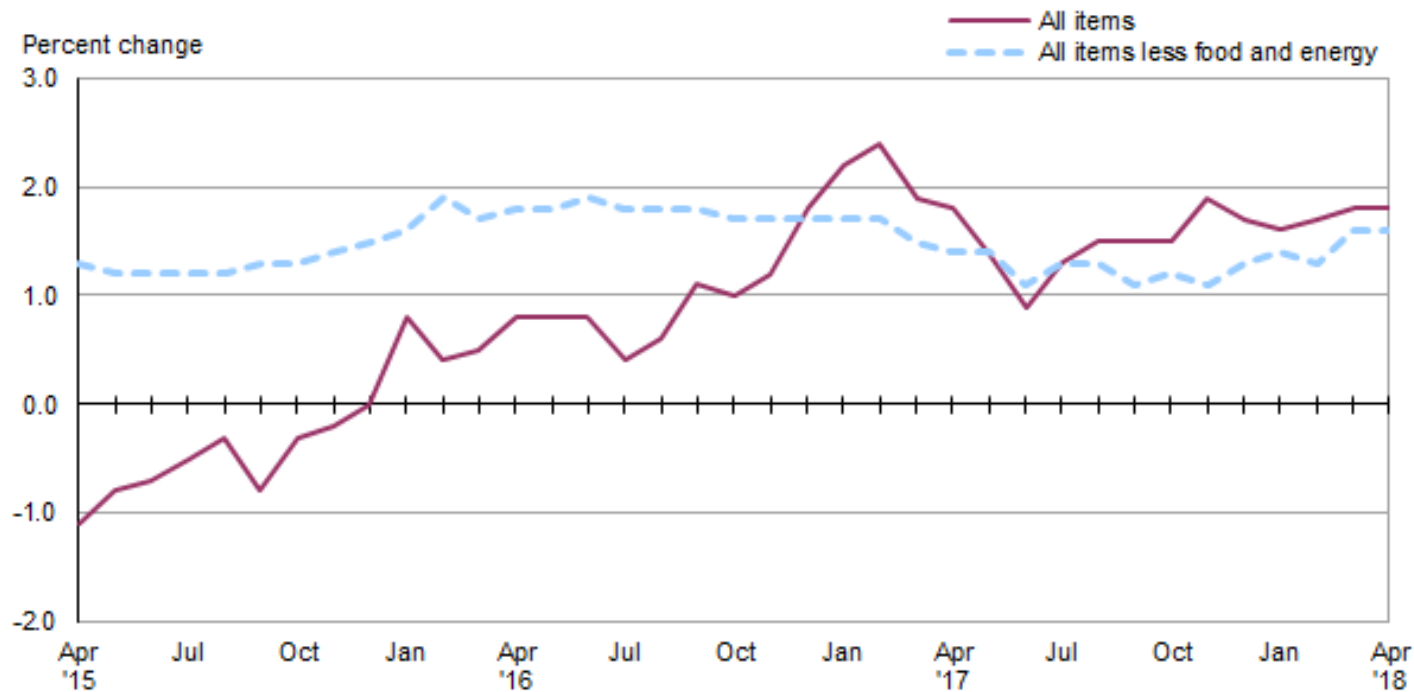
Media contact: (816) 285-7000

## Consumer Price Index, Midwest Region – April 2018

**Prices in the Midwest up 0.4 percent in April and 1.8 percent higher over the year**

The Consumer Price Index for All Urban Consumers (CPI-U) in the Midwest rose 0.4 percent in April, the U.S. Bureau of Labor Statistics reported today. Higher prices for gasoline (5.4 percent) led the increase. Overall, energy costs were up 2.5 percent and prices for food rose 0.5 percent. The index for all items less food and energy increased 0.2 percent over the month. (Data in this report are not seasonally adjusted. Accordingly, month-to-month changes may reflect the impact of seasonal influences.)

**Chart 1. Over-the-year percent change in CPI-U, Midwest region, April 2015–April 2018**



Source: U.S. Bureau of Labor Statistics.

The CPI-U for the Midwest advanced 1.8 percent from April 2017 to April 2018. (See [chart 1](#) and [table A](#).) The energy index, which includes motor fuel and household fuels, rose 5.3 percent and food prices increased 1.3 percent. Excluding food and energy, the CPI-U was up 1.6 percent over the year. (See [table 1](#).)

## Food

Food prices in the Midwest rose 0.5 percent in April after registering little change (-0.1 percent) in March. Costs for food at home were up 0.9 percent over the month following a decrease of 0.4 percent in the prior month. Prices for food away from home changed little (0.1 percent) in April after rising 0.2 percent in March.

From April 2017 to April 2018, the index for food was 1.3 percent higher. Prices for food away from home rose 2.1 percent and prices for food at home were up 0.8 percent.

## Energy

The energy index turned up 2.5 percent in April following a decline of 0.6 percent in March. Higher costs for gasoline (5.4 percent) were largely responsible for the increase. Costs for utility (piped) gas service and electricity declined over the month, down 2.0 and 0.3 percent, respectively.

Energy costs advanced 5.3 percent from April 2017 to April 2018 led by a 10.6-percent increase in gasoline prices. Costs for utility (piped) gas service were 2.0 percent lower over the year and electricity prices declined 0.3 percent.

## All items less food and energy

The index for all items less food and energy for the Midwest was up 0.2 percent in April after rising 0.3 percent in each of the prior two months. Higher costs for shelter (0.3 percent) had the largest upward impact on the index. Prices for other goods and services (1.8 percent) were also among those that contributed to the rise.

The index for all items less food and energy was up 1.6 percent from April 2017 to April 2018. Higher costs for shelter (3.1 percent) led the over-the-year increase.

The Midwest Consumer Price Index for All Urban Consumers (CPI-U) stood at 233.913 in April 2018. A typical market basket of goods and services that cost \$100.00 in the 1982-84 base period cost \$233.91 in April 2018.

## CPI-W

In April, the Midwest Consumer Price Index for Urban Wage Earners and Clerical Workers (CPI-W) was 228.153. The CPI-W increased 0.5 percent in April and rose 2.0 percent over the year.

**Table A. Midwest region CPI-U 1-month and 12-month percent changes, all items index, not seasonally adjusted**

Month	2014		2015		2016		2017		2018	
	1-month	12-month	1-month	12-month	1-month	12-month	1-month	12-month	1-month	12-month
January.....	0.5	1.4	-0.6	-0.3	0.3	0.8	0.7	2.2	0.6	1.6
February.....	0.6	0.9	0.3	-0.5	0.0	0.4	0.2	2.4	0.2	1.7
March.....	0.9	1.5	0.6	-0.9	0.6	0.5	0.1	1.9	0.2	1.8
April.....	0.3	1.9	0.1	-1.1	0.4	0.8	0.4	1.8	0.4	1.8
May.....	0.2	1.6	0.4	-0.8	0.4	0.8	0.0	1.4		
June.....	0.5	1.7	0.5	-0.7	0.6	0.8	0.0	0.9		
July.....	-0.3	1.8	0.0	-0.5	-0.5	0.4	0.0	1.3		
August.....	-0.2	1.6	0.0	-0.3	0.1	0.6	0.3	1.5		
September.....	0.1	1.6	-0.3	-0.8	0.2	1.1	0.3	1.5		
October.....	-0.5	1.6	-0.1	-0.3	-0.1	1.0	-0.2	1.5		
November.....	-0.6	1.2	-0.5	-0.2	-0.3	1.2	0.2	1.9		
December.....	-0.7	0.7	-0.6	0.0	0.1	1.8	-0.2	1.7		

**The May 2018 Consumer Price Index for the Midwest region is scheduled to be released on Tuesday, June 12, 2018.**

### **Technical Note**

The Consumer Price Index (CPI) is a measure of the average change in prices over time in a fixed market basket of goods and services. The Bureau of Labor Statistics publishes CPIs for two population groups: (1) a CPI for All Urban Consumers (CPI-U) which covers approximately 93 percent of the total population and (2) a CPI for Urban Wage Earners and Clerical Workers (CPI-W) which covers approximately 29 percent of the total population. The CPI-U includes, in addition to wage earners and clerical workers, groups such as professional, managerial, and technical workers, the self-employed, short-term workers, the unemployed, and retirees and others not in the labor force.

The CPI is based on prices of food, clothing, shelter, and fuels, transportation fares, charges for doctors' and dentists' services, drugs, and the other goods and services that people buy for day-to-day living. Each month, prices are collected in 75 urban areas across the country from about 5,000 housing units and approximately 22,000 retail establishments—department stores, supermarkets, hospitals, filling stations, and other types of stores and service establishments. All taxes directly associated with the purchase and use of items are included in the index.

The index measures price changes from a designated reference date (1982-84) that equals 100.0. An increase of 16.5 percent, for example, is shown as 116.5. This change can also be expressed in dollars as follows: the price of a base period "market basket" of goods and services in the CPI has risen from \$10 in 1982-84 to \$11.65. For further details see the CPI home page on the Internet at [www.bls.gov/cpi](http://www.bls.gov/cpi) and the BLS Handbook of Methods, Chapter 17, The Consumer Price Index, available on the Internet at [www.bls.gov/opub/hom/pdf/homch17.pdf](http://www.bls.gov/opub/hom/pdf/homch17.pdf).

In calculating the index, price changes for the various items in each location are averaged together with weights that represent their importance in the spending of the appropriate population group. Local data are then combined to obtain a U.S. city average. Because the sample size of a local area is smaller, the local area index is subject to substantially more sampling and other measurement error than the national index. In addition, local indexes are not adjusted for seasonal influences. As a result, local area indexes show greater volatility than the national index, although their long-term trends are quite similar. **NOTE: Area indexes do not measure differences in the level of prices between cities; they only measure the average change in prices for each area since the base period.**

The Midwest region is comprised of Illinois, Indiana, Iowa, Kansas, Michigan, Minnesota, Missouri, Nebraska, North Dakota, Ohio, South Dakota, and Wisconsin.

Information in this release will be made available to sensory impaired individuals upon request. Voice phone: (202) 691-5200; Federal Relay Service: (800) 877-8339.

**Table 1. Consumer Price Index for All Urban Consumers (CPI-U): Indexes and percent changes for selected periods, Midwest Region, (1982-84=100 unless otherwise noted) (not seasonally adjusted)**

Expenditure category	Indexes			Percent change from		
	Feb. 2018	Mar. 2018	Apr. 2018	Apr. 2017	Feb. 2018	Mar. 2018
All items.....	232.512	232.931	233.913	1.8	0.6	0.4
All items (December 1977 = 100).....	378.309	378.992	380.589			
Food and beverages .....	243.603	243.262	244.408	1.4	0.3	0.5
Food .....	242.865	242.510	243.762	1.3	0.4	0.5
Food at home .....	226.810	225.918	227.910	0.8	0.5	0.9
Cereals and bakery products .....	258.523	259.331	259.678		0.4	0.1
Meats, poultry, fish, and eggs.....	246.250	246.510	250.928		1.9	1.8
Dairy and related products .....	197.690	197.449	197.707		0.0	0.1
Fruits and vegetables .....	270.372	265.639	268.056		-0.9	0.9
Nonalcoholic beverages and beverage materials.....	160.943	160.072	161.413		0.3	0.8
Other food at home .....	197.900	197.301	198.865		0.5	0.8
Food away from home.....	269.935	270.384	270.538	2.1	0.2	0.1
Alcoholic beverages .....	251.636	251.480	251.166	2.1	-0.2	-0.1
Housing .....	224.834	225.275	225.719	2.4	0.4	0.2
Shelter .....	267.342	268.376	269.145	3.1	0.7	0.3
Rent of primary residence(1).....	267.484	268.124	268.476	3.1	0.4	0.1
Owners' equivalent rent of residences(1)(2).....	271.579	272.471	273.041	3.0	0.5	0.2
Owners' equivalent rent of primary residence(1)(2).....	271.543	272.425	273.006	3.0	0.5	0.2
Fuels and utilities.....	222.393	219.534	218.312	0.3	-1.8	-0.6
Household energy .....	181.728	178.513	177.081	-0.4	-2.6	-0.8
Energy services(1) .....	188.250	184.940	183.380	-0.8	-2.6	-0.8
Electricity(1).....	200.577	199.173	198.609	-0.3	-1.0	-0.3
Utility (piped) gas service(1).....	156.381	150.229	147.174	-2.0	-5.9	-2.0
Household furnishings and operations.....	113.552	114.176	114.652	0.2	1.0	0.4
Apparel.....	119.680	120.121	119.830	-1.0	0.1	-0.2
Transportation .....	199.926	201.054	203.479	2.8	1.8	1.2
Private transportation .....	194.848	195.963	198.175	3.3	1.7	1.1
New and used motor vehicles(3).....	96.185	96.982	96.692	-0.7	0.5	-0.3
New vehicles .....	136.898	136.939	137.142	-1.6	0.2	0.1
New cars and trucks(3)(4).....	96.702	96.718	96.864	-1.6	0.2	0.2
New cars(4).....	132.825	132.986	133.314	-2.2	0.4	0.2
Used cars and trucks.....	137.587	139.658	138.984	-1.4	1.0	-0.5
Motor fuel .....	226.835	228.003	240.215	10.7	5.9	5.4
Gasoline (all types).....	225.196	226.458	238.799	10.6	6.0	5.4
Gasoline, unleaded regular(4).....	219.143	220.390	232.741	10.8	6.2	5.6
Gasoline, unleaded midgrade(4)(5).....	259.166	260.756	272.681	9.5	5.2	4.6
Gasoline, unleaded premium(4).....	248.450	249.876	260.495	9.3	4.8	4.2
Motor vehicle insurance(6).....	738.214	738.086	733.338		-0.7	-0.6
Medical care .....	481.849	482.275	482.487	0.7	0.1	0.0
Medical care commodities.....	390.831	392.852	391.669	0.6	0.2	-0.3
Medical care services.....	512.320	512.205	512.890	0.7	0.1	0.1
Professional services .....	417.223	417.257	417.494	0.6	0.1	0.1
Recreation(3).....	122.405	122.187	122.365	0.6	0.0	0.1
Education and communication(3).....	137.778	137.461	137.377	0.4	-0.3	-0.1
Tuition, other school fees, and child care(6) ..	1,183.479	1,179.298	1,179.248		-0.4	0.0

Note: See footnotes at end of table.

**Table 1. Consumer Price Index for All Urban Consumers (CPI-U): Indexes and percent changes for selected periods, Midwest Region, (1982-84=100 unless otherwise noted) (not seasonally adjusted) - Continued**

Expenditure category	Indexes			Percent change from		
	Feb. 2018	Mar. 2018	Apr. 2018	Apr. 2017	Feb. 2018	Mar. 2018
Other goods and services .....	414.035	418.270	425.978	3.0	2.9	1.8
<b>Commodity and service group</b>						
Commodities .....	178.223	178.676	179.925	1.1	1.0	0.7
Commodities less food and beverages .....	146.553	147.284	148.520	0.9	1.3	0.8
Nondurables less food and beverages .....	194.097	194.970	197.739	2.9	1.9	1.4
Durables .....	101.384	101.954	102.027	-1.7	0.6	0.1
Services .....	288.465	288.847	289.539	2.3	0.4	0.2
<b>Special aggregate indexes</b>						
All items less shelter .....	222.264	222.475	223.537	1.3	0.6	0.5
All items less medical care .....	220.709	221.129	222.147	2.0	0.7	0.5
Commodities less food .....	149.821	150.532	151.735	1.0	1.3	0.8
Nondurables .....	218.578	218.889	220.919	2.1	1.1	0.9
Nondurables less food .....	197.132	197.946	200.540	2.9	1.7	1.3
Services less rent of shelter(2) .....	320.163	319.822	320.438	1.5	0.1	0.2
Services less medical care services .....	271.769	272.188	272.881	2.5	0.4	0.3
Energy .....	202.097	200.936	205.870	5.3	1.9	2.5
All items less energy .....	238.392	238.978	239.569	1.6	0.5	0.2
All items less food and energy .....	238.302	239.056	239.531	1.6	0.5	0.2

**Footnotes**

(1) This index series was calculated using a Laspeyres estimator. All other item stratum index series were calculated using a geometric means estimator.

(2) Indexes on a December 1982=100 base.

(3) Indexes on a December 1997=100 base.

(4) Special index based on a substantially smaller sample.

(5) Indexes on a December 1993=100 base.

(6) Indexes on a December 1977=100 base.

Note: Index applies to a month as a whole, not to any specific date.