



**For Release: Tuesday, June 12, 2018**

**18-1005-KAN**

MOUNTAIN-PLAINS INFORMATION OFFICE: Kansas City, Mo.

Technical information: (816) 285-7000 BLSInfoKansasCity@bls.gov www.bls.gov/regions/mountain-plains

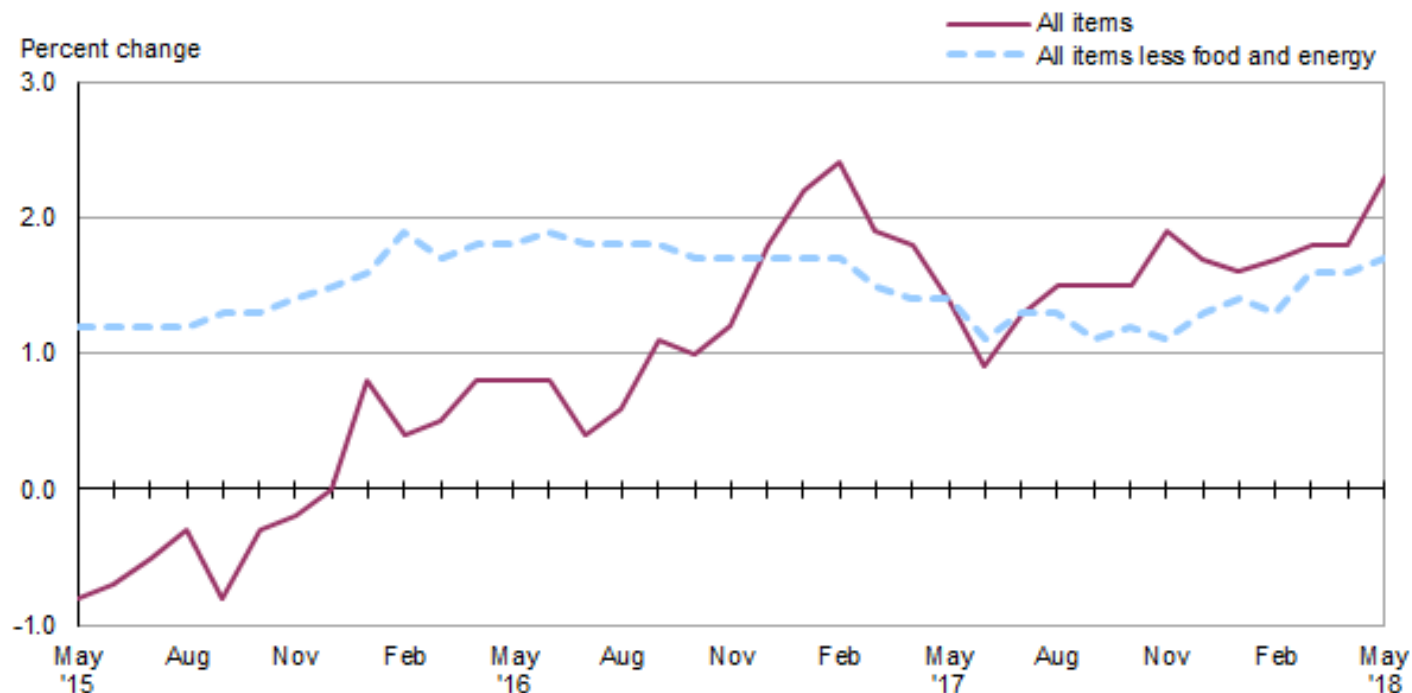
Media contact: (816) 285-7000

## Consumer Price Index, Midwest Region – May 2018

**Prices in the Midwest up 0.5 percent in May and 2.3 percent higher over the year**

The Consumer Price Index for All Urban Consumers (CPI-U) in the Midwest rose 0.5 percent in May, the U.S. Bureau of Labor Statistics reported today. Higher prices for gasoline (7.7 percent) led the increase. Overall, energy costs were up 5.0 percent. Prices for food declined 0.2 percent. The index for all items less food and energy increased 0.2 percent over the month. (Data in this report are not seasonally adjusted. Accordingly, month-to-month changes may reflect the impact of seasonal influences.)

**Chart 1. Over-the-year percent change in CPI-U, Midwest region, May 2015–May 2018**



Source: U.S. Bureau of Labor Statistics.

The CPI-U for the Midwest advanced 2.3 percent from May 2017 to May 2018. (See [chart 1](#) and [table A](#).) The energy index, which includes motor fuel and household fuels, rose 11.3 percent and food prices increased 1.0 percent. Excluding food and energy, the CPI-U was up 1.7 percent over the year. (See [table 1](#).)

## Food

Food prices in the Midwest turned down 0.2 percent in May after rising 0.5 percent in April. Costs for food at home were down 0.6 percent following a gain of 0.9 percent in the prior month. Prices for food away from home rose 0.4 percent in May after registering little change (0.1 percent) in April.

From May 2017 to May 2018, the index for food was 1.0 percent higher. Prices for food away from home rose 2.4 percent and prices for food at home were virtually unchanged (-0.1 percent).

## Energy

The energy index increased 5.0 percent in May after turning up 2.5 percent in April. Higher costs for gasoline (7.7 percent) were largely responsible for the May increase. Costs for electricity and utility (piped) gas service rose 2.6 and 0.2 percent, respectively, after both indexes registered declines in the prior month.

Energy costs advanced 11.3 percent from May 2017 to May 2018 led by a 23.2-percent increase in gasoline prices. Electricity prices were up 0.3 percent over the year, but costs for utility (piped) gas service were 3.0 percent lower.

## All items less food and energy

The index for all items less food and energy for the Midwest was up 0.2 percent in May following a gain of the same magnitude in the prior month. Higher costs for shelter (0.4 percent) and medical care (0.5 percent) had the largest upward impacts on the index. Prices for apparel (-1.0 percent), used cars and trucks (-0.9 percent), and household furnishings and operations (-0.6 percent) were among those that declined in May.

The index for all items less food and energy was up 1.7 percent from May 2017 to May 2018. Higher costs for shelter (3.1 percent) led the over-the-year increase.

The Midwest Consumer Price Index for All Urban Consumers (-U) stood at 235.065 in May 2018. A typical market basket of goods and services that cost \$100.00 in the 1982-84 base period cost \$235.07 in May 2018.

## CPI-W

In May, the Midwest Consumer Price Index for Urban Wage Earners and Clerical Workers (CPI-W) was 229.495. The CPI-W increased 0.6 percent in May and rose 2.6 percent over the year.

**Table A. Midwest region CPI-U 1-month and 12-month percent changes, all items index, not seasonally adjusted**

Month	2014		2015		2016		2017		2018	
	1-month	12-month	1-month	12-month	1-month	12-month	1-month	12-month	1-month	12-month
January.....	0.5	1.4	-0.6	-0.3	0.3	0.8	0.7	2.2	0.6	1.6
February.....	0.6	0.9	0.3	-0.5	0.0	0.4	0.2	2.4	0.2	1.7
March.....	0.9	1.5	0.6	-0.9	0.6	0.5	0.1	1.9	0.2	1.8
April.....	0.3	1.9	0.1	-1.1	0.4	0.8	0.4	1.8	0.4	1.8
May.....	0.2	1.6	0.4	-0.8	0.4	0.8	0.0	1.4	0.5	2.3
June.....	0.5	1.7	0.5	-0.7	0.6	0.8	0.0	0.9		
July.....	-0.3	1.8	0.0	-0.5	-0.5	0.4	0.0	1.3		
August.....	-0.2	1.6	0.0	-0.3	0.1	0.6	0.3	1.5		
September.....	0.1	1.6	-0.3	-0.8	0.2	1.1	0.3	1.5		
October.....	-0.5	1.6	-0.1	-0.3	-0.1	1.0	-0.2	1.5		
November.....	-0.6	1.2	-0.5	-0.2	-0.3	1.2	0.2	1.9		
December.....	-0.7	0.7	-0.6	0.0	0.1	1.8	-0.2	1.7		

**The June 2018 Consumer Price Index for the Midwest region is scheduled to be released on Thursday, July 12, 2018.**

### **Technical Note**

The Consumer Price Index (CPI) is a measure of the average change in prices over time in a fixed market basket of goods and services. The Bureau of Labor Statistics publishes CPIs for two population groups: (1) a CPI for All Urban Consumers (CPI-U) which covers approximately 93 percent of the total population and (2) a CPI for Urban Wage Earners and Clerical Workers (CPI-W) which covers approximately 29 percent of the total population. The CPI-U includes, in addition to wage earners and clerical workers, groups such as professional, managerial, and technical workers, the self-employed, short-term workers, the unemployed, and retirees and others not in the labor force.

The CPI is based on prices of food, clothing, shelter, and fuels, transportation fares, charges for doctors' and dentists' services, drugs, and the other goods and services that people buy for day-to-day living. Each month, prices are collected in 75 urban areas across the country from about 5,000 housing units and approximately 22,000 retail establishments—department stores, supermarkets, hospitals, filling stations, and other types of stores and service establishments. All taxes directly associated with the purchase and use of items are included in the index.

The index measures price changes from a designated reference date (1982-84) that equals 100.0. An increase of 16.5 percent, for example, is shown as 116.5. This change can also be expressed in dollars as follows: the price of a base period "market basket" of goods and services in the CPI has risen from \$10 in 1982-84 to \$11.65. For further details see the CPI home page on the Internet at [www.bls.gov/cpi](http://www.bls.gov/cpi) and the BLS Handbook of Methods, Chapter 17, The Consumer Price Index, available on the Internet at [www.bls.gov/opub/hom/pdf/homch17.pdf](http://www.bls.gov/opub/hom/pdf/homch17.pdf).

In calculating the index, price changes for the various items in each location are averaged together with weights that represent their importance in the spending of the appropriate population group. Local data are then combined to obtain a U.S. city average. Because the sample size of a local area is smaller, the local area index is subject to substantially more sampling and other measurement error than the national index. In addition, local indexes are not adjusted for seasonal influences. As a result, local area indexes show greater volatility than the national index, although their long-term trends are quite similar. **NOTE: Area indexes do not measure differences in the level of prices between cities; they only measure the average change in prices for each area since the base period.**

The Midwest region is comprised of Illinois, Indiana, Iowa, Kansas, Michigan, Minnesota, Missouri, Nebraska, North Dakota, Ohio, South Dakota, and Wisconsin.

Information in this release will be made available to sensory impaired individuals upon request. Voice phone: (202) 691-5200; Federal Relay Service: (800) 877-8339.

**Table 1. Consumer Price Index for All Urban Consumers (CPI-U): Indexes and percent changes for selected periods, Midwest Region, (1982-84=100 unless otherwise noted) (not seasonally adjusted)**

Expenditure category	Indexes			Percent change from		
	Mar. 2018	Apr. 2018	May 2018	May 2017	Mar. 2018	Apr. 2018
All items.....	232.931	233.913	235.065	2.3	0.9	0.5
All items (December 1977 = 100).....	378.992	380.589	382.464			
Food and beverages .....	243.262	244.408	243.923	1.0	0.3	-0.2
Food .....	242.510	243.762	243.329	1.0	0.3	-0.2
Food at home .....	225.918	227.910	226.522	-0.1	0.3	-0.6
Cereals and bakery products .....	259.331	259.678	259.378		0.0	-0.1
Meats, poultry, fish, and eggs.....	246.510	250.928	249.071		1.0	-0.7
Dairy and related products .....	197.449	197.707	196.934		-0.3	-0.4
Fruits and vegetables .....	265.639	268.056	267.736		0.8	-0.1
Nonalcoholic beverages and beverage materials.....	160.072	161.413	158.898		-0.7	-1.6
Other food at home .....	197.301	198.865	197.400		0.1	-0.7
Food away from home.....	270.384	270.538	271.536	2.4	0.4	0.4
Alcoholic beverages .....	251.480	251.166	249.979	1.6	-0.6	-0.5
Housing .....	225.275	225.719	226.692	2.4	0.6	0.4
Shelter .....	268.376	269.145	270.278	3.1	0.7	0.4
Rent of primary residence(1).....	268.124	268.476	268.935	3.0	0.3	0.2
Owners' equivalent rent of residences(1)(2).....	272.471	273.041	273.673	3.1	0.4	0.2
Owners' equivalent rent of primary residence(1)(2).....	272.425	273.006	273.641	3.1	0.4	0.2
Fuels and utilities.....	219.534	218.312	221.485	0.4	0.9	1.5
Household energy .....	178.513	177.081	180.231	-0.3	1.0	1.8
Energy services(1) .....	184.940	183.380	186.733	-0.8	1.0	1.8
Electricity(1).....	199.173	198.609	203.730	0.3	2.3	2.6
Utility (piped) gas service(1).....	150.229	147.174	147.478	-3.0	-1.8	0.2
Household furnishings and operations.....	114.176	114.652	113.970	-0.2	-0.2	-0.6
Apparel.....	120.121	119.830	118.603	-0.6	-1.3	-1.0
Transportation .....	201.054	203.479	207.561	5.5	3.2	2.0
Private transportation .....	195.963	198.175	202.118	6.1	3.1	2.0
New and used motor vehicles(3).....	96.982	96.692	96.618	-0.7	-0.4	-0.1
New vehicles .....	136.939	137.142	137.585	-0.8	0.5	0.3
New cars and trucks(3)(4).....	96.718	96.864	97.260	-0.7	0.6	0.4
New cars(4).....	132.986	133.314	133.768	-1.3	0.6	0.3
Used cars and trucks.....	139.658	138.984	137.762	-2.4	-1.4	-0.9
Motor fuel .....	228.003	240.215	258.522	23.2	13.4	7.6
Gasoline (all types).....	226.458	238.799	257.146	23.2	13.6	7.7
Gasoline, unleaded regular(4).....	220.390	232.741	250.788	23.6	13.8	7.8
Gasoline, unleaded midgrade(4)(5).....	260.756	272.681	294.457	21.1	12.9	8.0
Gasoline, unleaded premium(4).....	249.876	260.495	278.089	19.3	11.3	6.8
Motor vehicle insurance(6).....	738.086	733.338	730.503		-1.0	-0.4
Medical care .....	482.275	482.487	484.692	1.3	0.5	0.5
Medical care commodities.....	392.852	391.669	396.218	1.9	0.9	1.2
Medical care services.....	512.205	512.890	514.298	1.2	0.4	0.3
Professional services .....	417.257	417.494	418.256	0.7	0.2	0.2
Recreation(3).....	122.187	122.365	122.273	1.0	0.1	-0.1
Education and communication(3).....	137.461	137.377	137.534	0.7	0.1	0.1
Tuition, other school fees, and child care(6) ..	1,179.298	1,179.248	1,180.054		0.1	0.1

Note: See footnotes at end of table.

**Table 1. Consumer Price Index for All Urban Consumers (CPI-U): Indexes and percent changes for selected periods, Midwest Region, (1982-84=100 unless otherwise noted) (not seasonally adjusted) - Continued**

Expenditure category	Indexes			Percent change from		
	Mar. 2018	Apr. 2018	May 2018	May 2017	Mar. 2018	Apr. 2018
Other goods and services .....	418.270	425.978	425.220	2.7	1.7	-0.2
<b>Commodity and service group</b>						
Commodities .....	178.676	179.925	181.003	2.2	1.3	0.6
Commodities less food and beverages .....	147.284	148.520	150.137	2.9	1.9	1.1
Nondurables less food and beverages .....	194.970	197.739	201.952	6.6	3.6	2.1
Durables .....	101.954	102.027	101.711	-1.9	-0.2	-0.3
Services .....	288.847	289.539	290.763	2.4	0.7	0.4
<b>Special aggregate indexes</b>						
All items less shelter .....	222.475	223.537	224.705	2.0	1.0	0.5
All items less medical care .....	221.129	222.147	223.250	2.4	1.0	0.5
Commodities less food .....	150.532	151.735	153.289	2.8	1.8	1.0
Nondurables .....	218.889	220.919	222.965	3.7	1.9	0.9
Nondurables less food .....	197.946	200.540	204.448	6.2	3.3	1.9
Services less rent of shelter(2) .....	319.822	320.438	321.784	1.8	0.6	0.4
Services less medical care services .....	272.188	272.881	274.092	2.6	0.7	0.4
Energy .....	200.936	205.870	216.074	11.3	7.5	5.0
All items less energy .....	238.978	239.569	239.813	1.6	0.3	0.1
All items less food and energy .....	239.056	239.531	239.896	1.7	0.4	0.2

**Footnotes**

(1) This index series was calculated using a Laspeyres estimator. All other item stratum index series were calculated using a geometric means estimator.

(2) Indexes on a December 1982=100 base.

(3) Indexes on a December 1997=100 base.

(4) Special index based on a substantially smaller sample.

(5) Indexes on a December 1993=100 base.

(6) Indexes on a December 1977=100 base.

Note: Index applies to a month as a whole, not to any specific date.